

Welcome

Good afternoon! The all-staff meeting will start in a few minutes.

Please be sure to submit your questions in the Q&A feature or email them to publicaffairs@health.in.gov. We will reserve time at the end of the presentation.

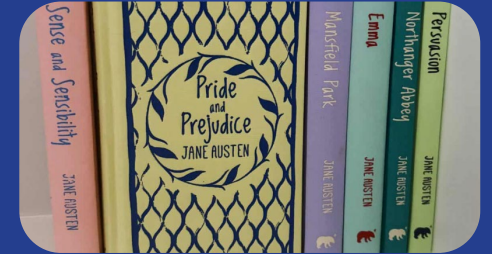
Have ideas for future topics? Please send them to Erin McCreadie (emccreadie@health.in.gov).

Learning Opportunity

Run and Hike Series



Book Club

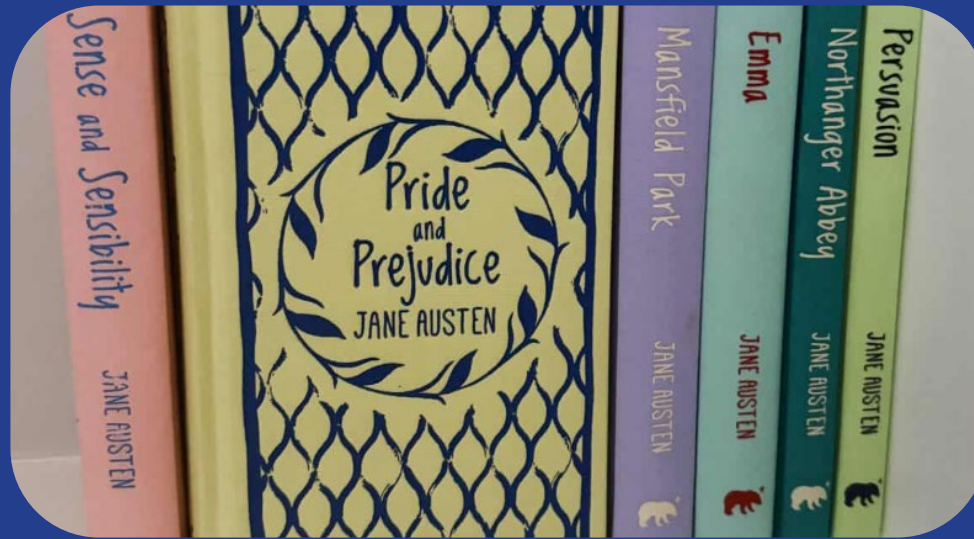
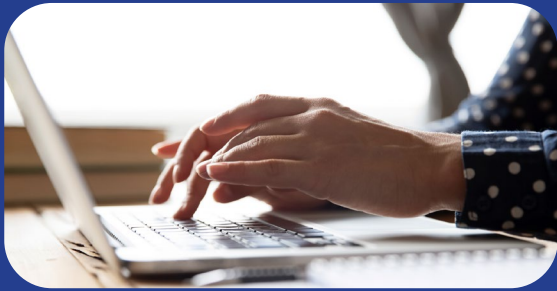


Continuous Quality Improvement Learning Opportunities - Project Management Part 1

This session will cover key project management concepts and terminology 1 to 2 p.m. EDT Thursday, April 16, Dr. Kris Box Conference Room or Teams. Email Zeel Gheewala at ZGheewala@health.in.gov for more.

Book Club

Learning
Opportunity



Run and Hike Series

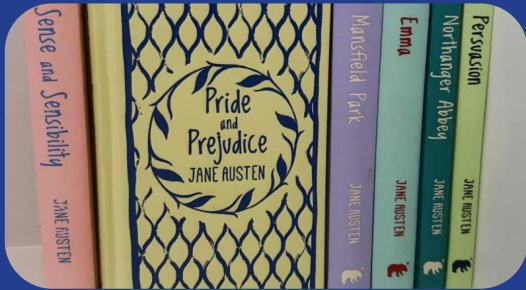


Noon to 1 p.m., Tuesday, May 19, Larkin
Join the Health and Wellness Council's Book Club in reading *Pride and Prejudice* by Jane Austen. Bring your lunch or a snack to enjoy.

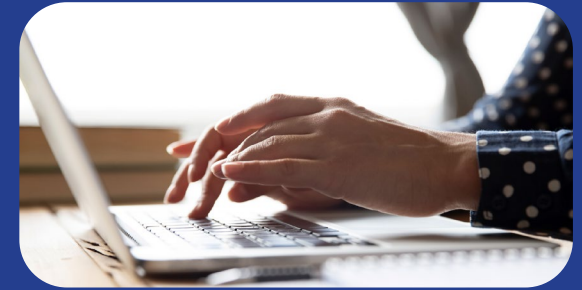
Please email Barbie Martin
at BarMartin@health.in.gov. more details.

Run and Hike Series

Book Club



Learning Opportunity



2026 Run the State Series Schedule

- **April 18:** 5K at Indiana Dunes State Park | [Register here](#)
 - **May 9:** 5K & Hike at Patoka Lake | [Register here](#)
 - **June 27:** 5K at White River State Park
 - **Sept. 19:** 5K & Hike at Ouabache State Park
 - **Oct. 3:** 5K & Hike at Charlestown State Park
- Stay tuned to the [Run the State webpage](#) for more.



Indiana
Department
of
Health

ALL-STAFF MEETING

EDEN BEZY, DEPUTY COMMISSIONER, PUBLIC HEALTH PRACTICE

PETER KROMBACH, DEPUTY CHIEF DATA OFFICER

GRETA SANDERSON, CHIEF COMMUNICATIONS OFFICER

BOB DAVIS, CHIEF PUBLIC HEALTH INTELLIGENCE AND TRANSFORMATION OFFICER

MARK GLAZIER, DEPUTY DIRECTOR, LABORATORY

LEE GREEN, SENIOR MEDICAL ENTOMOLOGIST

CAT MEYER, PUBLIC HEALTH ADMINISTRATOR, MCH

GEORGE WORLEY, CHEMIST

April 15, 2026

Agenda

- Opening Remarks
- Staff Accomplishments
- Agency Updates and Reminders
- Rural Health Transformation
- OPA Update
- Pillar: Customers and Service
- IDOH Lab Spotlight
- Epi Update
- The More You Know
- Staff Spotlight
- Q&A





Agency Updates



Indiana
Department
of
Health



Agency Priorities

1. Promote Maternal and Infant Health Outcomes

Families deserve a strong start, and improving outcomes for mothers, infants, and children remains one of the most unifying goals across public health. Indiana continues to face persistent challenges in infant and maternal health, and this priority reinforces our shared responsibility to support healthy pregnancies, safe deliveries, and strong developmental foundations. It is also an area where stakeholders, legislators, and communities overwhelmingly expect us to lead.

2. Prevent Chronic Disease

Chronic diseases represent some of the biggest health challenges facing Indiana and are central to legislative interest and public health outcomes. By focusing on prevention and better disease management, we can improve quality of life, reduce long term health costs, and address conditions that affect Hoosiers of every age. This priority aligns our work with statewide needs and positions us to respond proactively rather than reactively.

3. Improve Data Quality and Transparency

Public health is most effective when information is accurate, timely, and accessible. By improving how we collect, manage, and communicate data, we build trust with the public, empower partners and policymakers with reliable information, and increase the visibility and credibility of our work. Becoming a clear, trusted hub of health information improves both public perception and agency effectiveness.

Public Health Week Recap



IDOH Staff Awards

Public Health Week Recap

Thank you to the years of service award winners and award winners:

Exemplary Leadership Award Winner: Jessica Ganote, Division of Home & Community-Based Care

Exceptional Customer Service Award Winner: Alexandra Stultz, Finance

Outstanding Teamwork Award Winner: Cancer Registry Team

Power of One Award Winner: Derek Sebold, Division of Emergency Preparedness

Public Health Hero Award Winner: Cameron Willett, Division of Family Health Data and Fatality Review



Download photos at:

<https://www.flickr.com/photos/200123728@N02/albums/72177720331982812/>

Good luck, Dr. Crowder!

Join us!

We will celebrate Chief Medical Officer Dr. Guy Crowder with a reception:

WHEN: 2 -3:30 p.m. Friday, April 24

WHERE: 8th Floor Kris Box Conference Room



RHTP General Update

- We officially have our year one money!
 - Must be encumbered by 9/30/26
 - Year one must be spent by 7/30/27
 - New money (fingers crossed...!) to come on 11/1/26
- Several procurements are active and several are ready to launch
- Contract employees to be onboarded soon
- Regional coalitions and committees are meeting regularly to assess the health of our communities
- Thank you and great work to everyone who has contributed so far – we cannot do this without you!

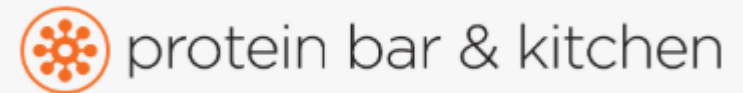
Upcoming Events

- Don't forget: State offices will be closed on Tuesday, May 5, for Primary Election Day
- The Original Farmer's Market will be back this summer! Beginning on May 6, the farmer's market will run every Wednesday from 10 a.m. – 1:30 p.m. on Monument Circle
- The Monumental Mini Marathon is on Saturday, May 2. Parking may be disrupted on Friday due to packet pickup



New restaurant coming ...

- The Protein Bar & Kitchen is moving into the space vacated by Arden (Pearings)
- Full menu, including breakfast, lunch, smoothies
- Anticipate opening early June
- Thanks for your patience during any construction disruptions



On the Move

Office relocation

Women, Infants and Children (WIC), Center for Deaf and Hard of Hearing Education (CDHHE), Early Hearing Detection and Intervention (EHDI), and Genomics and Newborn Screening (GNBS) Program

Tentative dates:

- WIC – May 7
- CDHHE and EHDI – May 1
- GNBS – May 4



**4150 N. Keystone
Indianapolis, IN 46206**



Staff Accomplishments

- MaKayla Waugh was recognized as one of the top 100 outstanding undergraduate students at IU Indianapolis; as well as made the Dean's List and was a recipient of the William M Plater Civic Engagement Medallion.
- ODA Data Engineer Billy Kantor earned his accreditation for "Azure Databricks Platform Architect".
- Kimberly Kearschner updated her American Medical Technologist (AMT) Certification and is a certified MLS.
- Lucy Khatib of the STI program completed her MCAT testing.
- Maleni Aveja Children's Special Health Care Services Division (CSHCS) participated in Leadership at All Levels (Blue) and The Leadership Academy.

Staff Accomplishments

- Jonathan Harris in the Chemistry Laboratory completed a drinking water certification officer class held by the EPA in Cincinnati from March 23-26.
- The Environmental Public Health Division's Jim Powers will be receiving the 2026 Indiana Dental Association Dr. Charles W. Gish Award. This award recognizes Indiana citizens who have demonstrated outstanding service to the dental profession.
- Sarah Iwinski-Wallace from MCH completed her master's degree in human services.
- Drug Overdose Prevention team members (TIP) were selected for both a breakout session (Collaborating with local partners to Expand Peer Navigation Efforts) and poster session (Controlled Prescription Dispensations preceding Fatal Overdoses in Indiana) at the upcoming OD2A recipient meeting.

Staff Accomplishments

- April Stevens graduated from The Leadership Academy in March.
- Sally Petty and Tim Arndt are presenting nationally at the “No Barriers, Just Better Health” Community of Practice to NACDD Disability Network Advisory Board on April 15th.
- Sarah Feeney, from the Office of Data & Analytics, was listed as a contributing author on the manuscript, "Emergence of Extensively Drug-Resistant Shigellosis - United States, 2011-2023" that is being published in the April 9 MMWR.
- Dr. Rebekah Cunningham with the Center for Deaf and Hard of Hearing Education has been awarded the designation of Distinguished Fellow of the American Academy of Audiology (DFAAA).



Welcome New Team Members and Congrats

New staff members

Anna Thompson—Public health administrator, WIC

Nicole Crocker—Epidemiologist, Family Health Data and Fatality Prevention

Randy Homeyer—Medical surveyor, Complaints and Incidents

Andrew Kelly—Public health administrator, HIV/STI/Viral Hepatitis

Rubina Cheema—Environmental scientist, Lead and Healthy Homes

Promotion:

Davis Ratermann has been promoted to Controller E6

Shield Spotlight

Scan to
nominate:



"Pat has transformed the workout space at 2N and purchased so much new equipment, creating a space for employees to continue their health journeys and exercise goals. Pat is always a friendly face in the building."

Pat Brown

Division of Emergency Preparedness

Award of Excellence



"Ondreya has worked tirelessly to get hospitals enrolled in the replacement program. She's been very busy with travel through the entire state and is still willing to assist any other team member, helping make our division one of the best."

Ondreya Witmer

Immunization

Team Player Award

Social Posts

Keeley Higley, MA, CLS • 2nd
Children's health administrator | University instructor | Public health...
4d • Edited •

So glad that the Child and Adolescent Health team was able to volunteer this morning at **Gleaners Food Bank of Indiana**. This was a great way to celebrate Public Health Week while giving back. Thanks to **Indiana Department of Health** for arranging opportunities like this!
Sarah Iwinski-Wallace Sophia Schadewald, MPH AJ Moon



Sarah Lounsbury, MA and 38 others
1 comment • 3 reposts

Like Comment Repost

Aishwarya Kunam • 2nd
MSHI | BDS
2d •

What an incredible Bring Your Child to Work Day! ★

I had the joy of co-organizing this year's event alongside **Jessica Ganote** and **Shere Brooks**, as part of the People & Culture Pillar team sponsored by Jessica Kurg. We welcomed 60+ enthusiastic kids, and the day was filled with curiosity, creativity, and so much fun.

This event is all about inspiring the next generation of public health professionals by giving children a chance to see what their family members do at **Indiana Department of Health** and how it impacts the health and well-being of Hoosiers. Seeing their excitement was a powerful reminder of how meaningful it is to introduce children to health education.

I'm incredibly grateful to everyone who made the day so special - from setting up engaging stations to connecting so thoughtfully with the kids. Special thanks to **Nelly Chawla BDS, MPH, CPH** for the rethink-your-drink station and dentist dress-up corner 🦷, **Graham McKeen, MPA** for the radon cloud chamber demo, **AJ Moon** for mindfulness bottles and friendship bracelets, **Travis Stansbury, PMP** for the interactive cybersecurity passphrase activity 📱, and **Stacy London** and **Shirley Dubois** for the tobacco/vaping education 🚬, pig-lung demonstration 🐷, and bumper-sticker station. A huge shout-out to **Emma Smythe** and Kayleigh Holsapple for bringing the dance-party 🎉 energy, and to **Naima Gardner, MPH** for a wonderful presentation on physical activity and eating healthy 🍎. A special thank you to **Dr. Lindsay Weaver MD, FACEP** for taking the time to join us and interact with the kids! 😊

A perfect way to celebrate National Public Health Week by inspiring young minds!!

#NationalPublicHealthWeek #PublicHealth #Indiana #BringYourChildToWorkDay

Morgan Sprecher, MPH • 2nd
Indiana Violent Death Reporting System (INVDRS) Epidemiologist ...
5d • Edited •

Honored to receive recognition for my 5 years of public health service as a state employee at the **Indiana Department of Health!**



66

4 comments

Access the form to submit post ideas:





Rural Health Transformation



Indiana
Department
of
Health



Rural Health Transformation Program





Initiative 7&8: Growing Teleconsult & Telehealth Access and Infrastructure

Initiatives 7&8: Expanding Teleconsultation and Telehealth Access and Infrastructure

Objectives: Improve access to care in rural communities by expanding telehealth and teleconsultation capabilities, strengthening infrastructure, and enabling timely, coordinated, technology-supported care for high-impact conditions.

Initiative 7&8: Growing Teleconsult & Telehealth Access and Infrastructure



REAL-TIME CARE
(Synchronous)



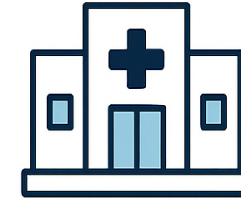
DEFERRED CARE
(Asynchronous / eConsult)



CONTINUOUS CARE
(Remote Patient Monitoring & Mobile Health)



ACCESS TO CARE EXPANSION



CARE DELIVERY TRANSFORMATION



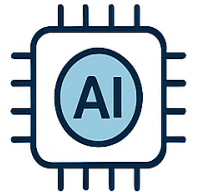
CHRONIC DISEASE MANAGEMENT



PREVENTION & POPULATION HEALTH



WORKFORCE & PROVIDER SUPPORT



TECHNOLOGY INNOVATION & AI

Initiative 7&8: Growing Teleconsult & Telehealth Access and Infrastructure

Key Year 1 Activities

- I. Conduct landscape assessment
- II. Identify and evaluate opportunities for extending current partnerships or implementing pilot programs

- Teleconsultation and Telehealth Health Landscape Assessment
 - Establish a comprehensive baseline of telehealth and teleconsultation capabilities across regions, providers and specialties
 - Identify gaps in access, infrastructure, and specialty care availability, with emphasis on rural and potentially underserved populations
 - Develop a data-driven prioritization framework for high-impact investment areas
- Strategic Benefit for Future Funding Years
 - Enables targeted, evidence-based allocation of funds rather than fragmented programs
 - May help inform regional coalition activities in Years 3-5



OPA Updates



Indiana
Department
of
Health



Accessibility Updates

- WCAG guidelines help make websites easier for everyone to use, including people with disabilities
- Starting April 24, organizations are expected to follow these guidelines
- The focus is on things like clear content, easy navigation, and accessible design on all devices, especially optical readers
- **After April 24, all documents must pass the accessibility checker before being posted to the website**



Accessibility Updates

- New [templates](#) on The Nerve Center – discard old templates and download new ones, sunsetting Publisher
- If you have a link on your webpage to download a state form, make sure it's pulling from the [state forms catalog](#), not a link on our website.
- The data products team will be working this month to update all public facing Tableau Dashboards and GIS products to comply with ADA standards. Some of the **main changes** to the products will be **around text size, colors, fonts, alternative text descriptions, and underlying user functionality.**
 - Contact Sarah Feeney for GIS products and Abigail DeSantis for Tableau dashboards
 - REDCap users: Watch your email for accessibility guidance

**Accessibility
OPA office
hours: 10
a.m. – Noon
EDT April 16
in Larkin**



Accessibility tool tips

- Alt text for images
- Color contrast - <https://app.contrast-finder.org/?lang=en>
- Charts and graphs need texture (lines, dots) not just color to make a distinction between information
- Reading order must step down
- Tables need to be simple with no merged or split cells (e.g. put titles above not in the table, no uneven tables)
- It can be good to go in Microsoft (Word, PowerPoint etc.) but not after you make a .pdf. Additional changes will need to be made to .pdf. Consider posting in the website CMS or reach out to Annette Vaughan in OPA.
- More training coming soon

Accessibility Updates

Run accessibility checker before you submit to SharePoint and make sure all files are "good to go". Otherwise it will say "Investigate."

Local Health Department
HAPPENINGS
Indiana Department of Health

Regarding this cancer from 2018 to 2022, there were 2,414 new cases of esophageal cancer and 2,017 esophageal cancer related deaths. This information and more regarding other cancers can be found on the Cancer Data Dashboard from the Indiana Department of Health: [Cancer Data Dashboard](#).

Accessibility: Good to go

Summary for the Week of March 30 – April 3

2026 LOCAL PUBLIC HEALTH LEADERSHIP SYMPOSIUM
The 2026 Local Public Health Leadership Symposium will take place on Wednesday, May 13, at the Garrison Conference Center at Fort Harrison State Park. Click [here](#) to register. We look forward to seeing you there!

ESOPHAGEAL CANCER AWARENESS MONTH
April is esophageal cancer awareness month and a good opportunity to remind residents of your community to stay up to date on the latest data regarding this cancer. From 2018-2022 in Indiana, there were 2,414 new cases of esophageal cancer and 2,017 esophageal cancer related deaths. This information and more regarding other cancers can be found on the Cancer Data Dashboard from the Indiana Department of Health: [Cancer Data Dashboard](#).

2026 PUBLIC HEALTH LEADERSHIP SYMPOSIUM
Location: The Garrison at Fort Harrison State Park
Date & Time: May 13 from 9am to 4pm
Cost: \$75.00

Page 1 of 7 1968 words English (United States) Accessibility: Good to go

Accessibility Assistant

- Hard-to-read text contrast
- Media and Illustrations
 - Missing alt text
- Tables
 - Missing table header
 - Use of merged or split cells
- Document Structure
 - No headings in document
- Document Access
 - Restricted access

Give Feedback
Learn about accessibility
Settings

New SharePoint!



OPA Service Request

ID# 1 - Listening and Spoken language and Multidisciplinary evaluation

- Moving April 16
- Will be unavailable for a couple hours that morning while data are moved over

Request

<input type="checkbox"/> Title *	<input type="checkbox"/> Target Completion Date	<input checked="" type="checkbox"/> Priority	<input type="checkbox"/> ID for Item
Listening and Spoken language and Multidisciplinary evaluation	Enter value here	Select an option	1

Attachments

<input checked="" type="checkbox"/> AttachYesNo	<input checked="" type="checkbox"/> Will the attached files be posted online	<input type="checkbox"/> Attachments
No	No	RSV_Season_Extension_wit...

Details

<input checked="" type="checkbox"/> Service Required	<input type="checkbox"/> Date of Request	<input type="checkbox"/> Link to website	<input type="checkbox"/> Contact Name
Website Update	4/8/2026	Enter value here	Kelsey Large
<input type="checkbox"/> Contact Email	<input type="checkbox"/> Contact Phone	<input type="checkbox"/> Program Area or Division	<input type="checkbox"/> Description
klarge@health.in.gov	+1 317-233-5588	CDHHE	Slide deck for presentation at the AG Bell Listening and Spoken Language Symposium.
<input type="checkbox"/> Distribution Plan	<input type="checkbox"/> Supervisor Approval	<input checked="" type="checkbox"/> Legislative Approval	<input checked="" type="checkbox"/> Clinician Approval
presentation	Yes	N/A	N/A
<input checked="" type="checkbox"/> Epi Approval	<input checked="" type="checkbox"/> If this is a data report, has it been reviewed by ODA?	<input checked="" type="checkbox"/> Spellcheck and Accessibility Checker completed?	<input type="checkbox"/> Comments
N/A	N/A		



Website migration

- Moving the website to a new content management system (CMS) called dotCMS (replacing Squiz Matrix)
- Will begin the process May 12
- Process includes moving content
- Live training sessions (a.m. or p.m.)
- Goal to complete the process by May 27
- Website has a refreshed look and the CMS is much faster and easier
- Will be a two-week blackout while we are moving over
- Watch for more information!



Elevator Lobby Monitors

- Messaging on the floor lobby screens
- Nominate someone from your floor to be screen lead
 - If you have something you'd like to put up on your floor, please have the designated lead reach out to Erin McCreadie with OPA



Customers & Service



Indiana
Department
of
Health

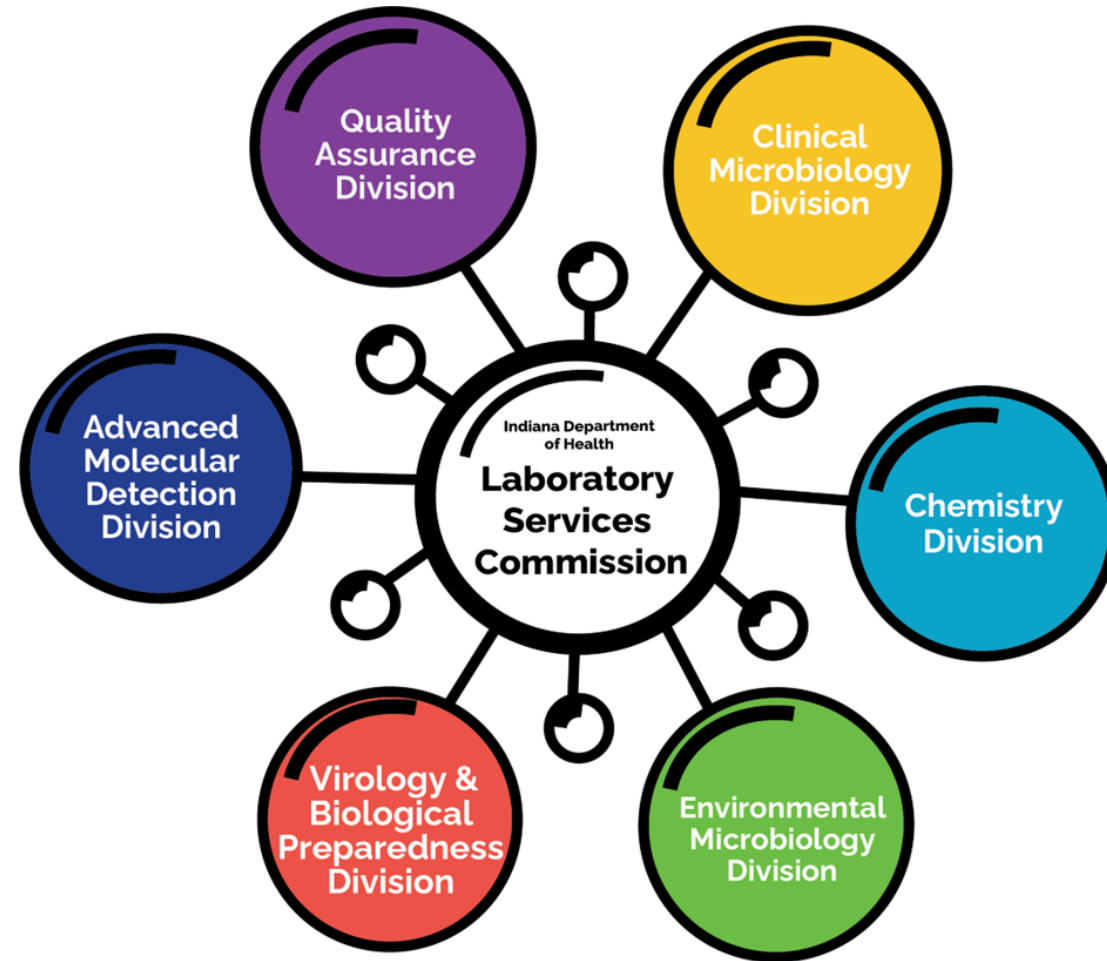


IDOH Laboratory



Indiana
Department
of
Health

IDOH Laboratory organization



IDOHL By the Numbers



Advanced Molecular Detection Division:

Antibiotic Resistance – 1,415
Vaccine Preventable Disease – 207
Sequencing of bacterial pathogens – 1889



Chemistry Division:

Over 80,000 environmental results for IDEM, Oral Health, Lead & Healthy Homes, Food and Water Testing
Over 14,000 clinical results for Blood Lead and Drugs of Abuse



Clinical Microbiology Division:

Mycobacteriology: TB Clinical – 2,012; IGRA – 4,147
Serology: HCV – 14,273; HIV – 14,649; Syphilis – 6,059
Chlamydia/Gonorrhea – 19,332



Environmental Microbiology Division:

Food & Dairy: Dairy – 2,805; Food – 145; Meat – 559
Enteric – 1,874
Water Microbiology – >19,000
Lab Support: Media Prep – 695; Containers – 455 (clinical), 26,856 (environmental)

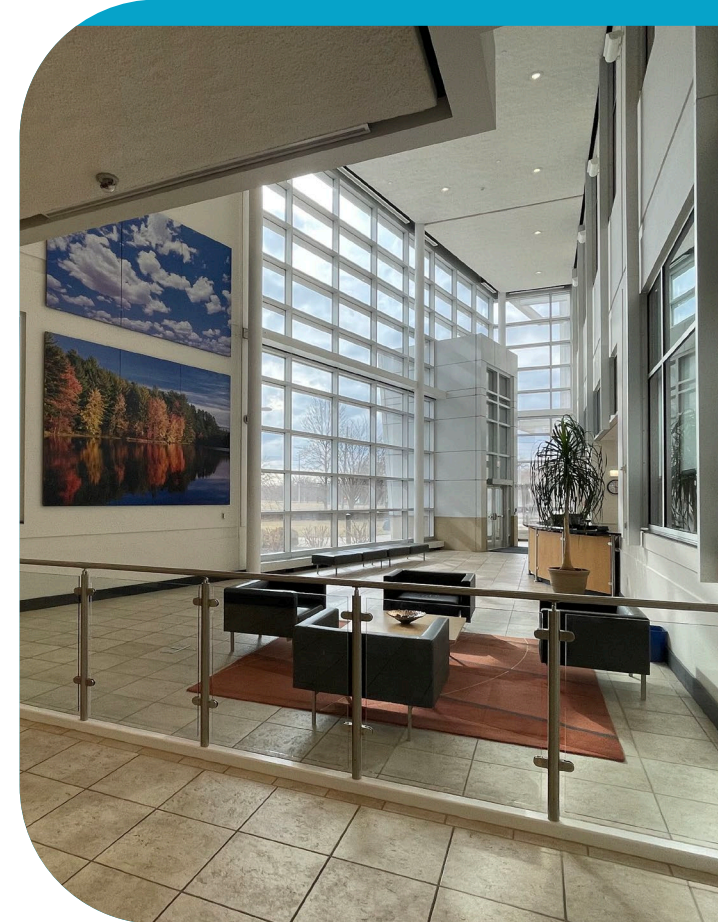


Virology & Biological Preparedness Division:

Biothreat – 81
Rabies – 2,101
Virology – 1,024

IDOHL Highlights and Projects

- Courier service expansion in April included 6 additional regional sites and an increase in the number of stops.
- Strengthened lab infrastructure with installation of 13 new biosafety cabinets.
- AMD team is working to onboard additional pathogens for sequencing and to make looking for relatedness part of the standard process for all sequencing outputs.
- The Mycobacteriology team is in the process of validating two new methods for detecting drug resistance in *Mycobacterium tuberculosis*. Methods will expand the number of drugs that we have susceptibility results for, which will enable clinicians to ensure patients are on appropriate therapy.
- Chemistry team is replacing 26 yr old Laboratory Information Management System with STARLIMS Environmental Sciences platform.
- Environmental Micro team is working to bring on visceral Leishmaniasis and Trichinosis clinical testing and measles testing in wastewater.
- QA team coordinated responses for recent ISO 17025 and EPA audits of multiple microbiology and chemistry lab areas.



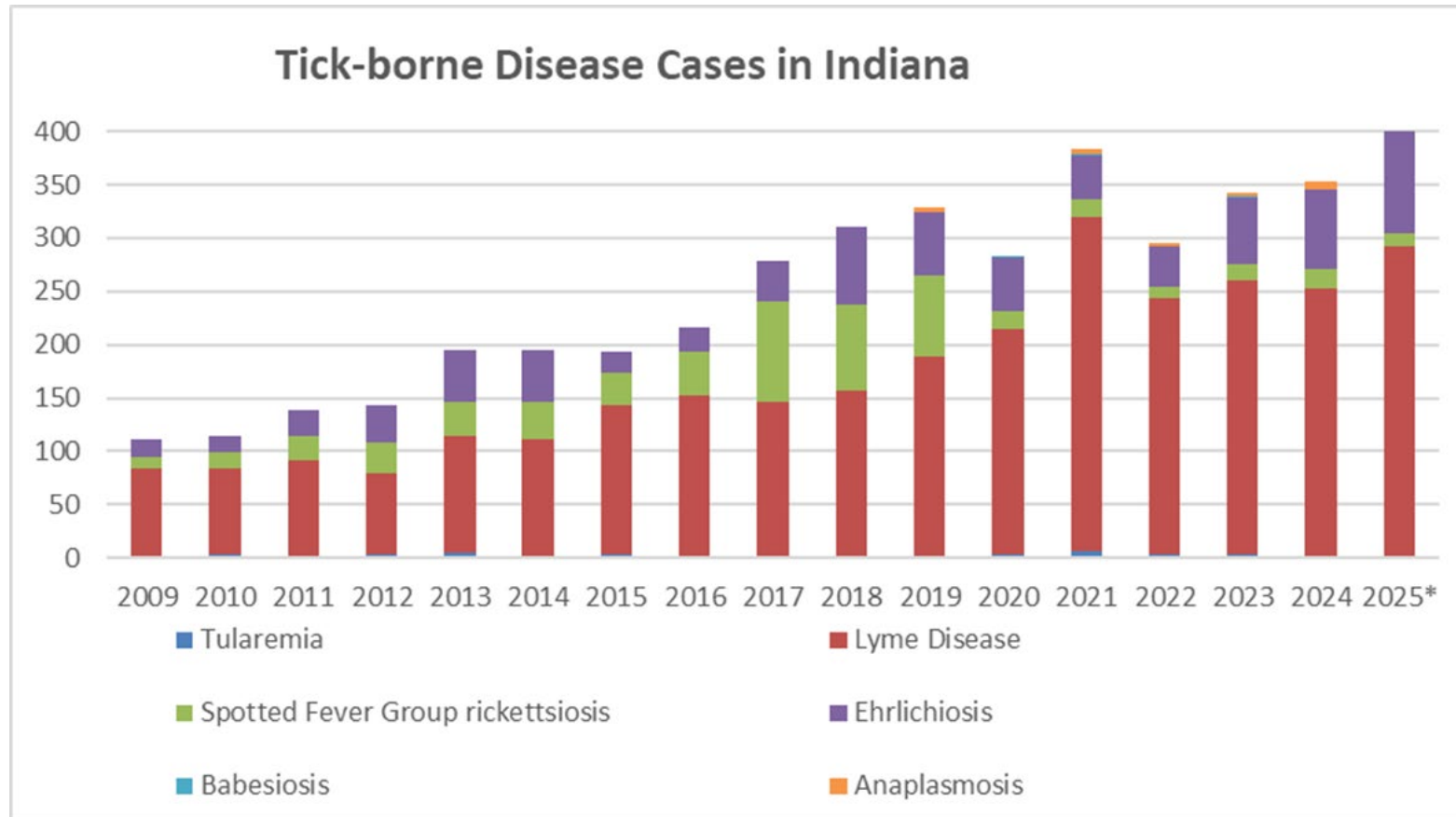


Epi Update






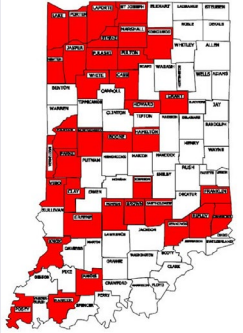
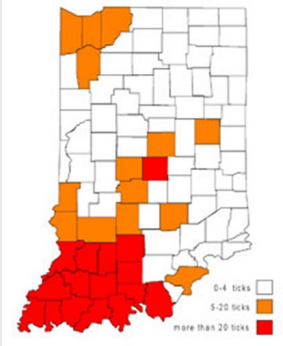
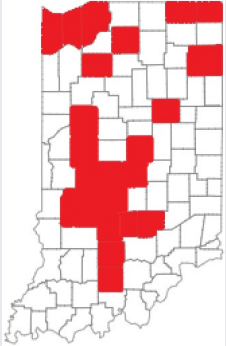


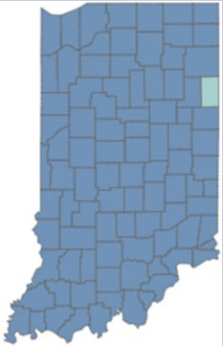
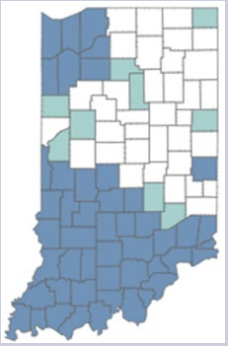





Indiana
Department
of
Health

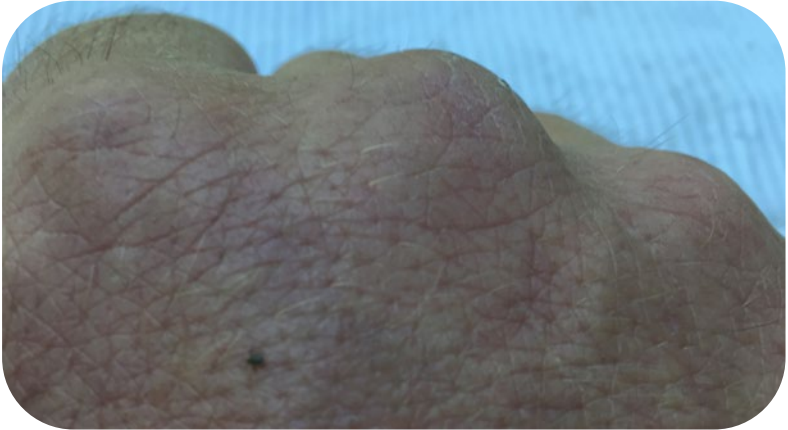
Spring is Here! So are ticks.



Ticks of Medical Importance - Indiana

	Blacklegged Tick	Lone Star Tick	American Dog Tick	Gulf Coast Tick	Asian Longhorned Tick
					
2016					
2025					

Blacklegged Ticks and Lyme Disease



HUMAN CASE SURVEILLANCE

Lyme Disease is Selected

HUMAN CASE SURVEILLANCE

Indiana Administrative Code (410 IAC 1-2.5) requires healthcare providers and laboratories to report notifiable disease cases to the Indiana Department of Health (IDOH). These cases are investigated by local health departments and classified by IDOH using national surveillance case definitions established by the Council of State and Territorial Epidemiologists and endorsed by the Centers for Disease Control and Prevention (CDC).

This dashboard reports confirmed and probable cases according to the national surveillance case definition that was in effect at the time of the case report. Human case data for the current calendar year should be considered provisional. These data may change substantially before they are finalized. Provisional data from the current year should not be combined with or compared to final data from previous years.

Click anywhere on this description for a pop-up hyperlink to the CDC National Surveillance Case Definitions website.

Select Year(s)
Filter applies to all human data on page

(All)

Human Cases

2,523

Human Cases

1 356

Tick Activity by Month
2017— Present

Blacklegged Tick

Legend: Nymphs Collected (purple), Adults Collected (green)

Human Cases by Month

Human Cases

Tick Habitat

Blacklegged tick habitat



Lone Star tick habitat



American Dog tick and Gulf Coast tick habitat



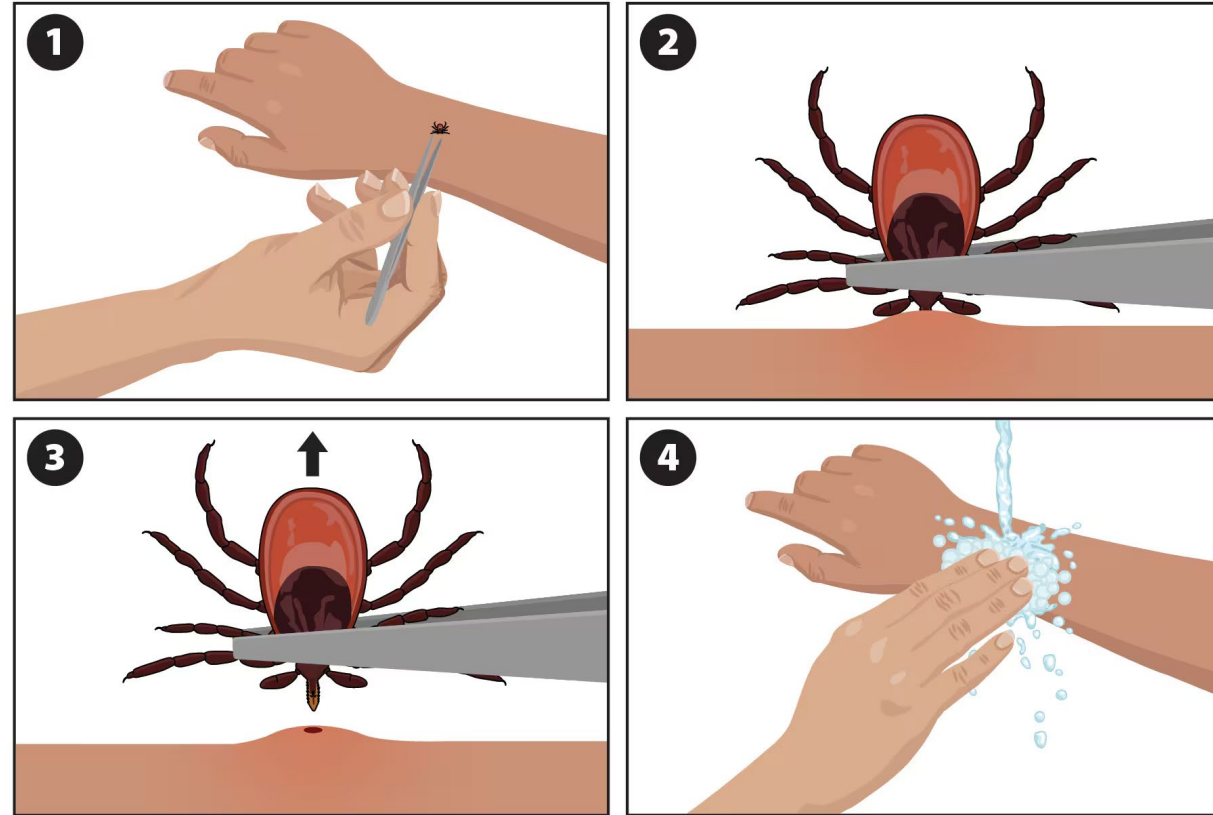
Personal Protection Measures

- AVOID TICK AREAS
- Protective clothing
- Repellent
 - DEET, Picaridin, OLE, IR3535 on skin
 - Permethrin on clothing
- TICK CHECKS!
- Prompt, proper tick removal



Proper Tick Removal

- If you find a tick attached to your skin, simply remove the tick as soon as possible
- There are several tick removal devices on the market, but a plain set of fine-tipped tweezers works very well
- If you develop a rash or fever within several days to weeks after removing a tick, see your doctor





The More You Know: Stress Relief



Indiana
Department
of
Health



Self Care is bio-individual!

- Bio-individuality refers to the unique biological and physiological characteristics that define each person.
 - It emphasizes that **no two individuals are alike**, and what works for one may not work for another.
- The first step to stress relief is to find what works for you. Take time to notice and reflect on how situations, hobbies, activities, people make you feel.
- Self care can be hard and requires dedication!
 - **Tool:** Mentally vs Physically exhausted?



Self Care is bio-individual!

Tips and Tricks for Stress Relief at work:

- For managers:
 - Start team meetings off with 5mins of breathwork or a mediation.
 - Help identify and address the root cause of stress. Normalize mental health conversations!
 - Encourage work-life balance
 - Brag about your team and their work whenever you can
- For all staff:
 - Keep your workspace clutter free! Put on your calendar a monthly tidy
 - Say no and delegate whenever you feel overwhelmed
 - Stay present with your work!



Staff Spotlight: George Worley



Get to Know Me

- A day in my work life – What does a typical day look like? How does your role fit into the bigger picture?
 - To start with the big picture, focus on my role, then expand back to the scope of work at IDOH. The Chemistry division at the Indiana Department of Health's labs monitors a range of molecular environmental contaminants. Most of what we monitor is not at a level that poses an acute hazard; however, these contaminants can cause disease and poor health over a lifetime or during certain stages of life. My lab typically measures radioactivity in water samples. When our lab works with these water samples, we measure picocuries of activity per liter. To quickly put that into perspective, light travels to the moon in about 1.3 seconds; in a microsecond, it travels about 0.2 miles; and in a hundredth of an inch, in a picosecond. The level of radiation we are measuring in the lab is essentially the difference between a trip to the moon for an acutely lethal dose and the width of a hair for the Environmental Protection Agency's detection limits. However, the limits are so low because these contaminants can build up in our bodies when we are exposed through internal routes, such as food or water.
- What I wish others knew about my job or tasks that might surprise teammates.
 - Radioactive materials aren't really as exotic as you may think. My department actually handles the dosimetry for lead and healthy homes! Lead and Healthy Homes uses X-ray fluorescence meters that emit ionizing radiation to detect lead. Some of these devices use gamma radiation that can penetrate through layers of paint to detect hidden lead.

Passions and Projects

- My favorite project so far – What made it rewarding, and what others can learn from it?
- It has really been a pleasure to provide services to small water utilities and to try to be, at least in part, someone who can champion water quality for underserved communities. Many of these utilities do not meet testing requirements solely because they are unaware of the requirements and need information on testing availability. It is so important to go into our work every day with the understanding that people may not know there is a department that "does that," and that we need to be the advocates of public health.

Passions and Projects

- When work gets creative – Moments you've brought innovation, storytelling, or unique flair to your tasks.
- I have a huge interest in stories like the Radioactive Boy Scout, Chernobyl, and the Goiânia accident. I'm always down for a lunch-and-learn presentation, as long as someone provides lunch.

Off-Duty Inspiration



Quiz

What is the date when all new online documents have to meet accessibility guidelines?

The 12th person to email the correct answer to publicaffairs@health.in.gov wins a **\$15 gift card!**



Questions & Answers

Please submit your questions in the Q&A box or email them to publicaffairs@health.in.gov.

Next All-Staff Meeting

Wednesday, May 13, 2-3 p.m.

