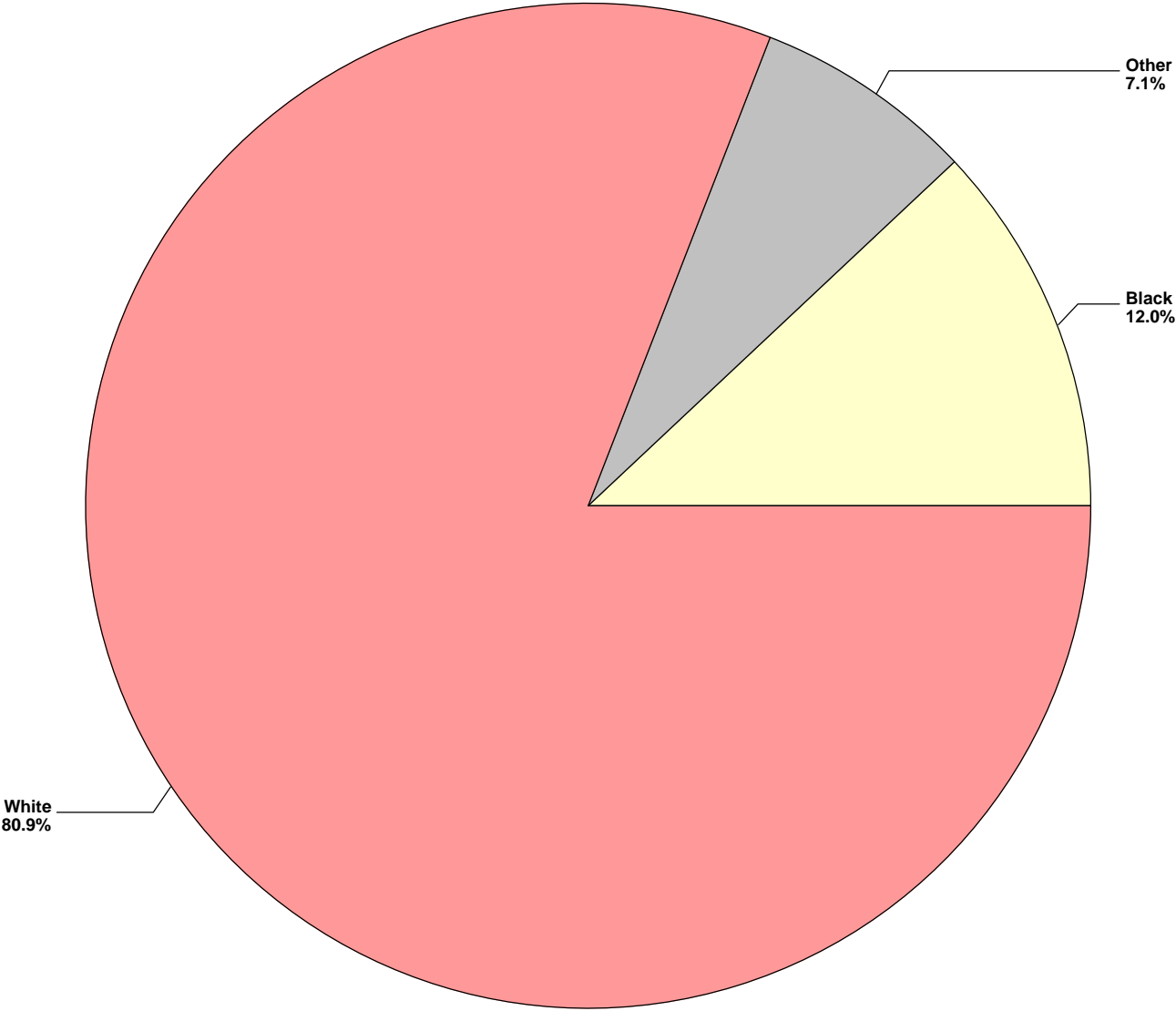


Figure 1

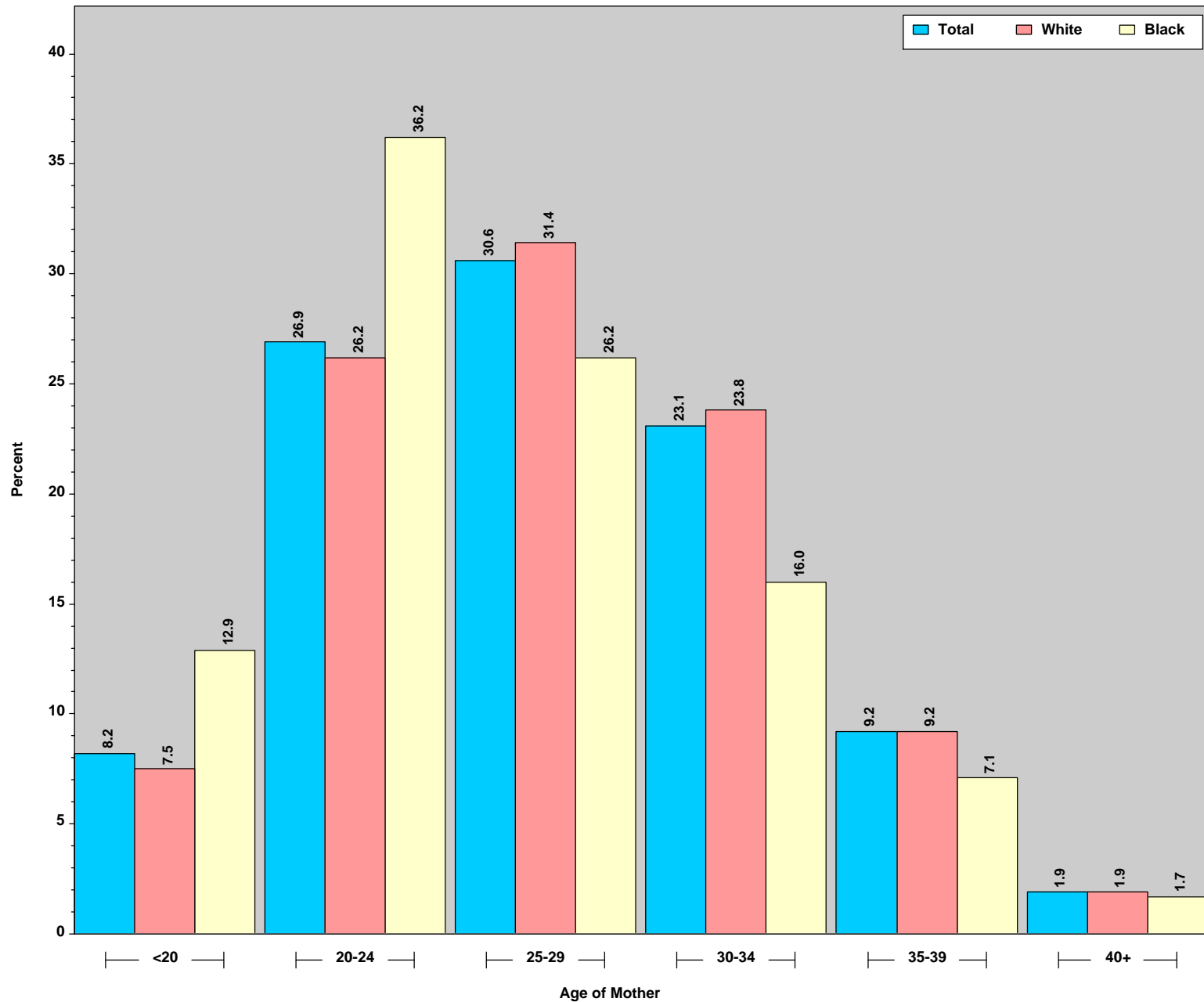
Percent of Live Births by Race of Mother: Indiana Residents, 2013



This figure was run on January 27, 2015.
Source: ISDH, ERC, DAT; Table 1.

Figure 2

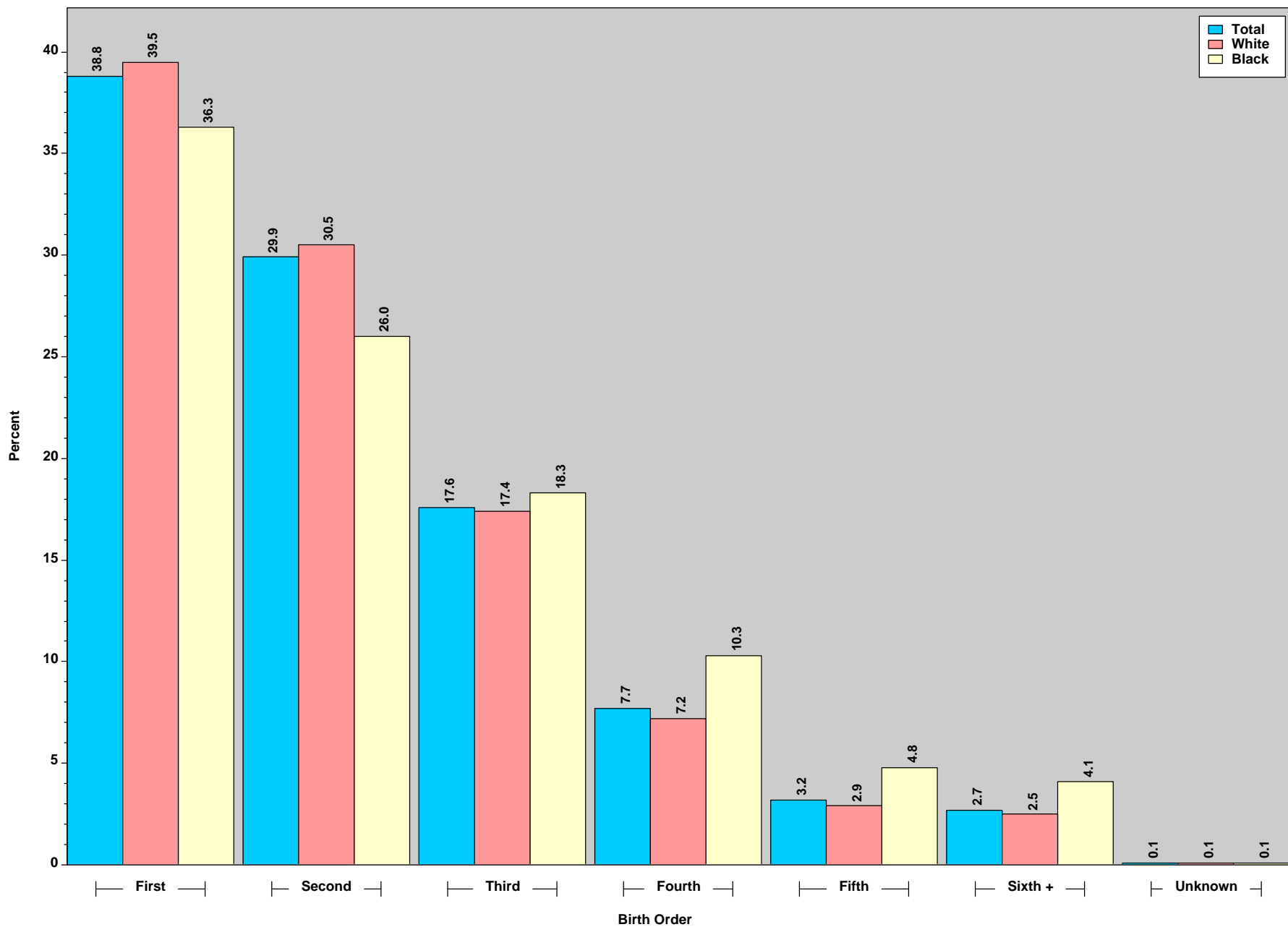
Percent of Live Births by Age and Race of Mother: Indiana Residents, 2013



This figure was run on January 27, 2015.
Source: ISDH, ERC, DAT; Table 3

Figure 3

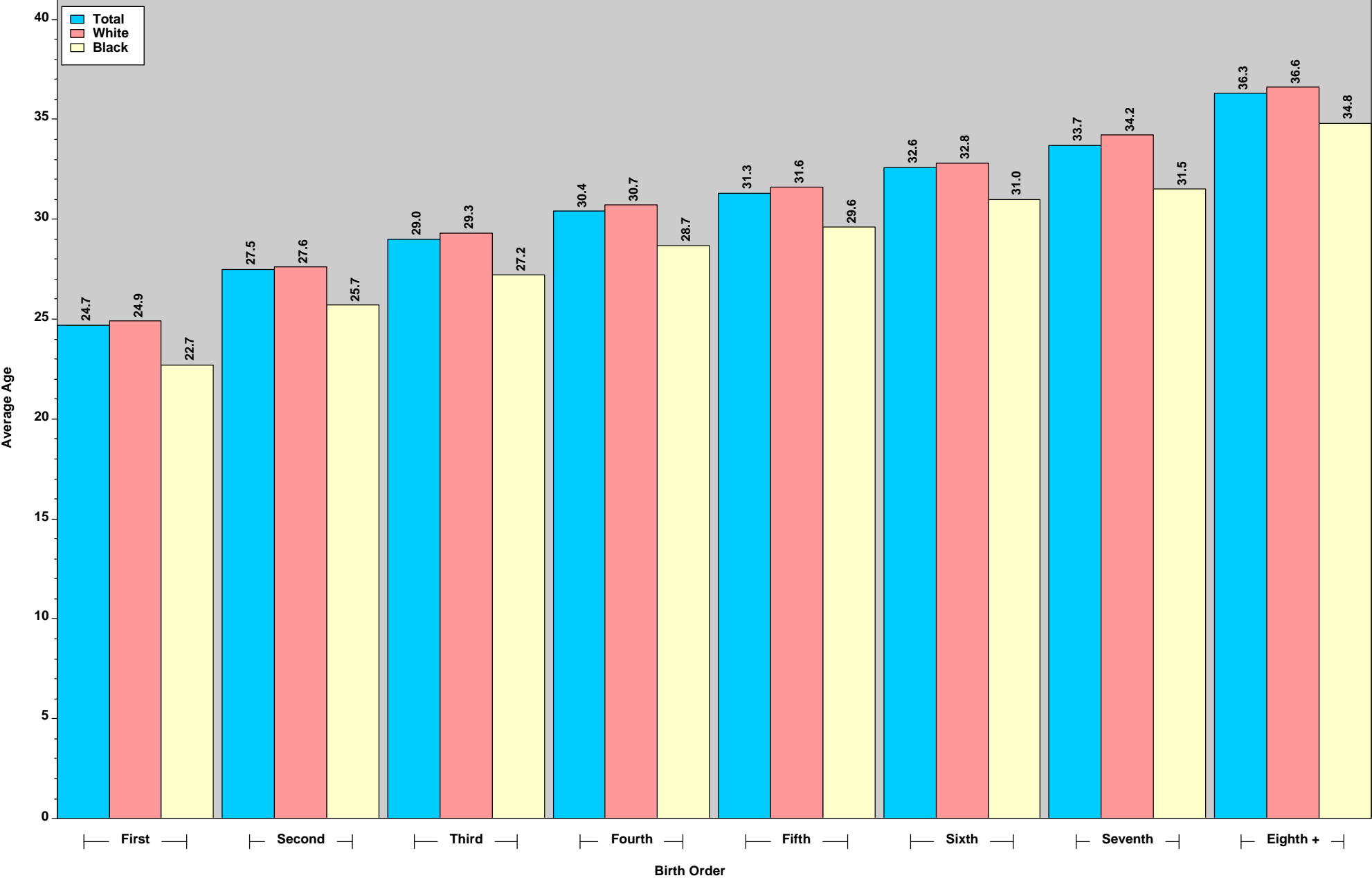
Percent of Live Births by Birth Order and Race of Mother: Indiana Residents, 2013



This figure was run on January 27, 2015.
Source: ISDH, ERC, DAT; Table 7

Figure 4

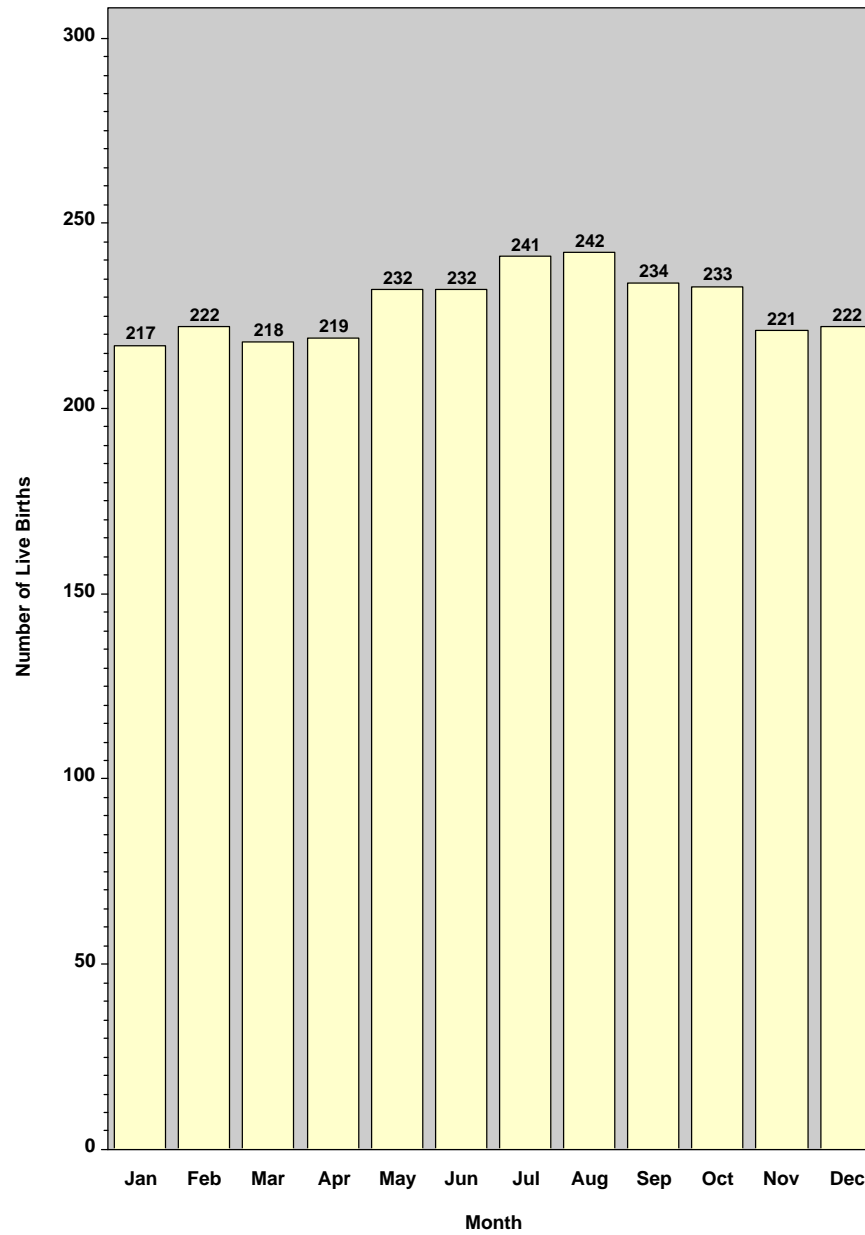
Average Age of Mother by Live Birth Order and Race: Indiana Residents, 2013



This figure was run on January 27, 2015.
Source: ISDH, ERC, DAT

Figure 5

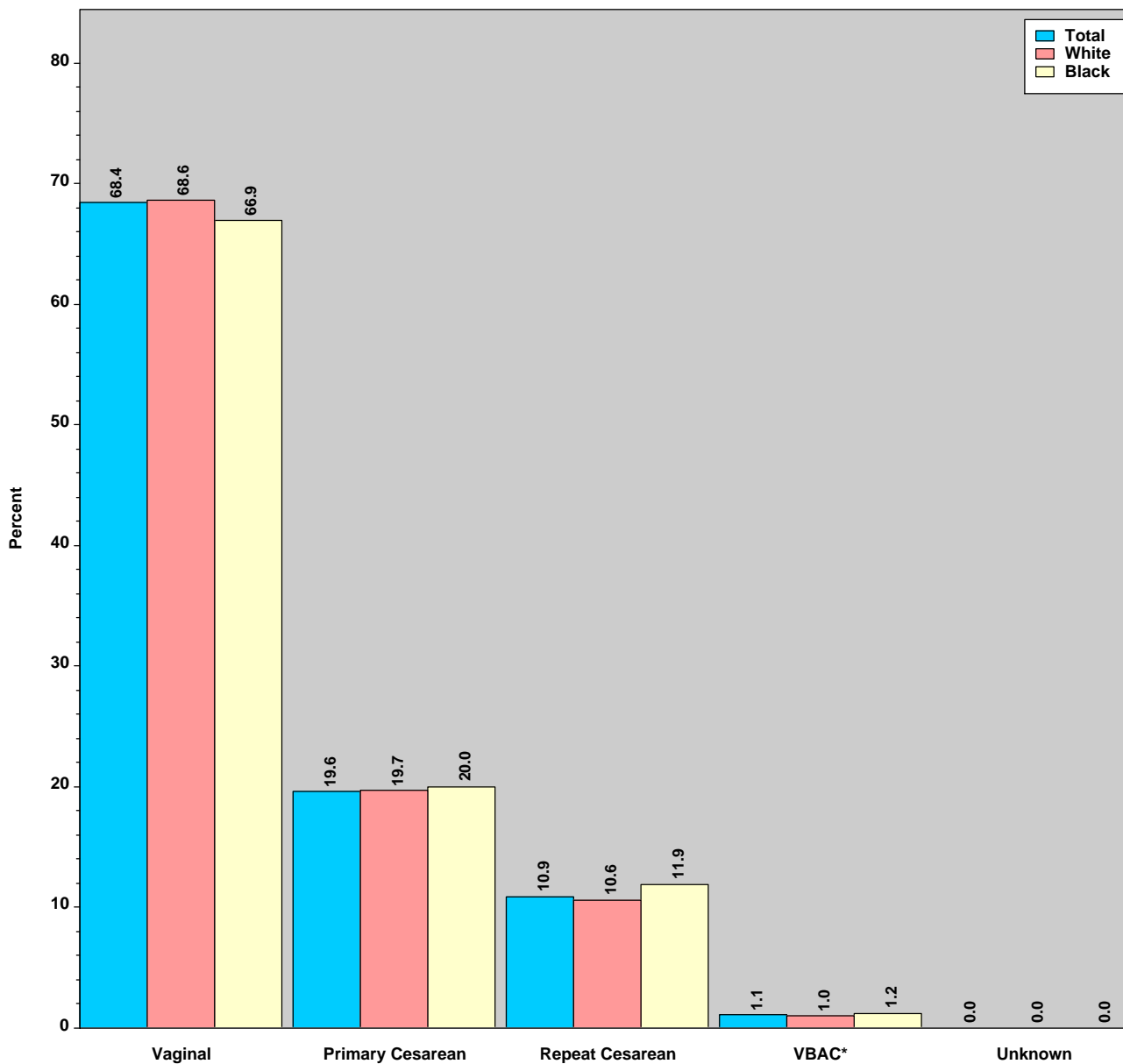
Average Number of Live Births per Day by Month: Indiana Residents, 2013



This figure was run on January 27, 2015.
Source: ISDH, ERC, DAT; Table 4

Figure 6

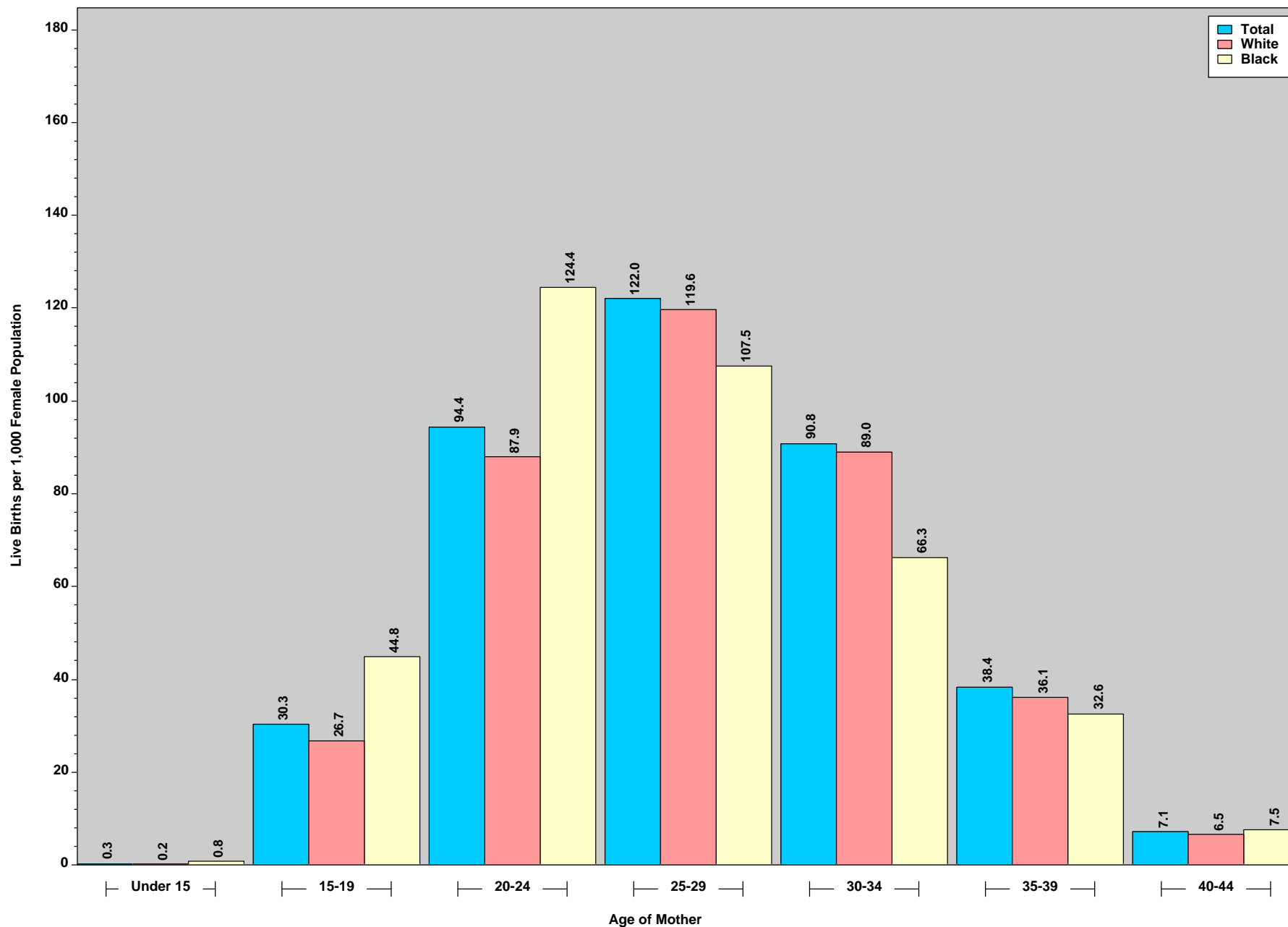
Percent of Live Births by Method of Delivery and Race of Mother: Indiana Residents, 2013



*VBAC = Vaginal Birth After Cesarean
This figure was run on January 27, 2015.
Source: ISDH, ERC, DAT; Table 27a

Figure 7

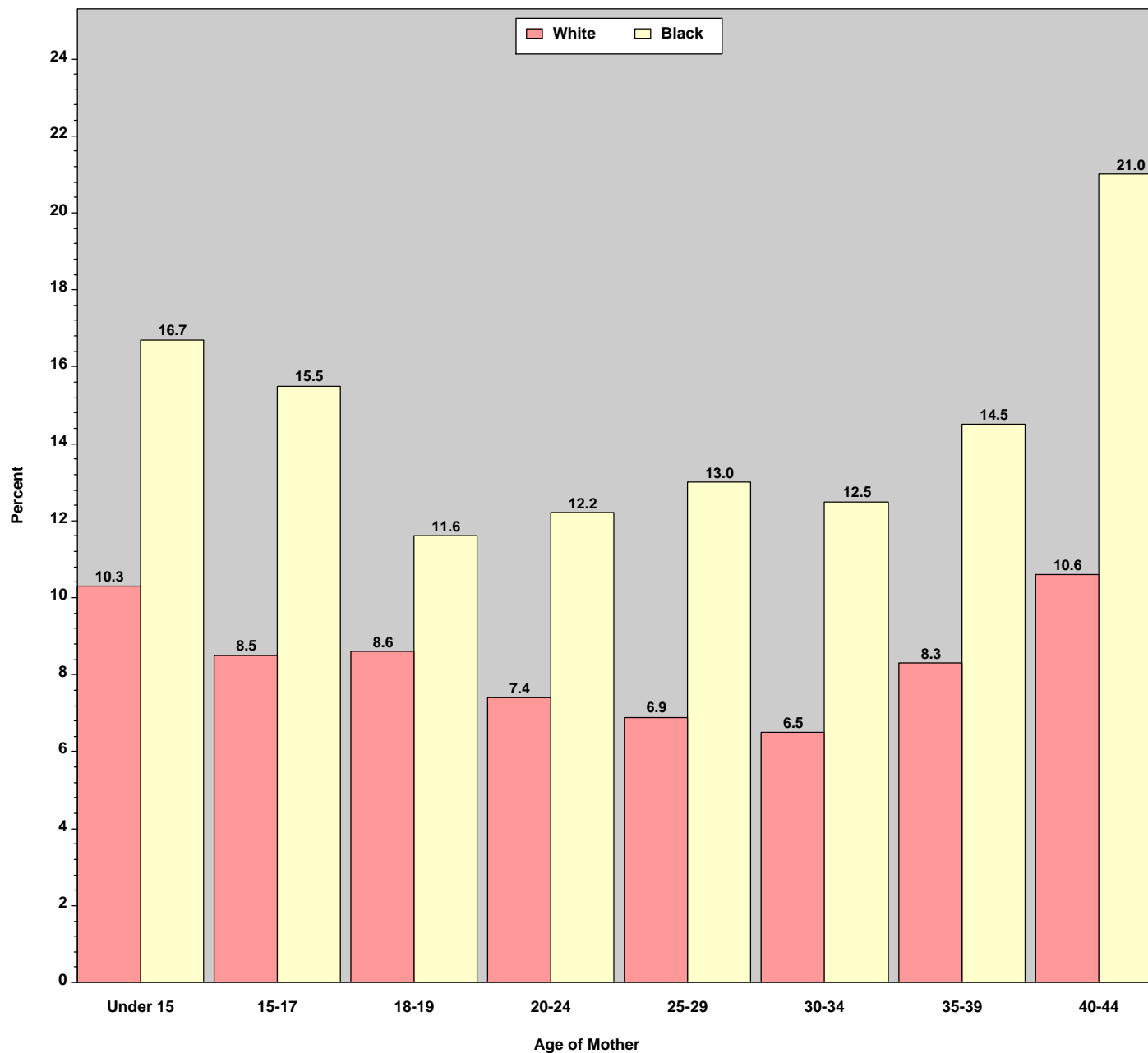
Age-Specific Birth Rates by Race of Mother: Indiana Residents, 2013



This figure was run on January 27, 2015.
Source: ISDH, ERC, DAT; Table 13

Figure 8

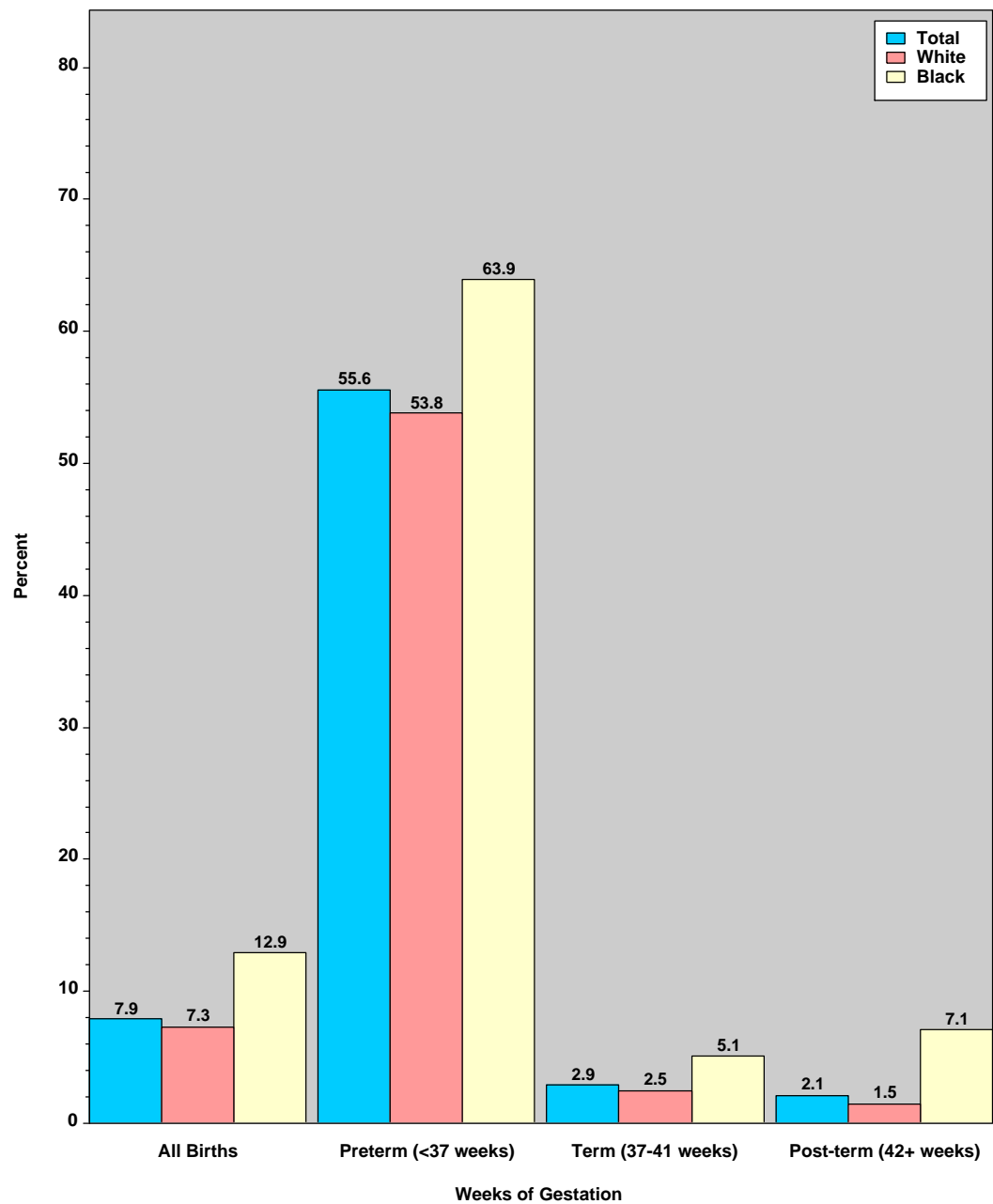
Percent of Low Birthweight Infants by Age and Race of Mother: Indiana Residents, 2013



This figure was run on January 27, 2015.
Source: ISDH, ERC, DAT; Table 14

Figure 9

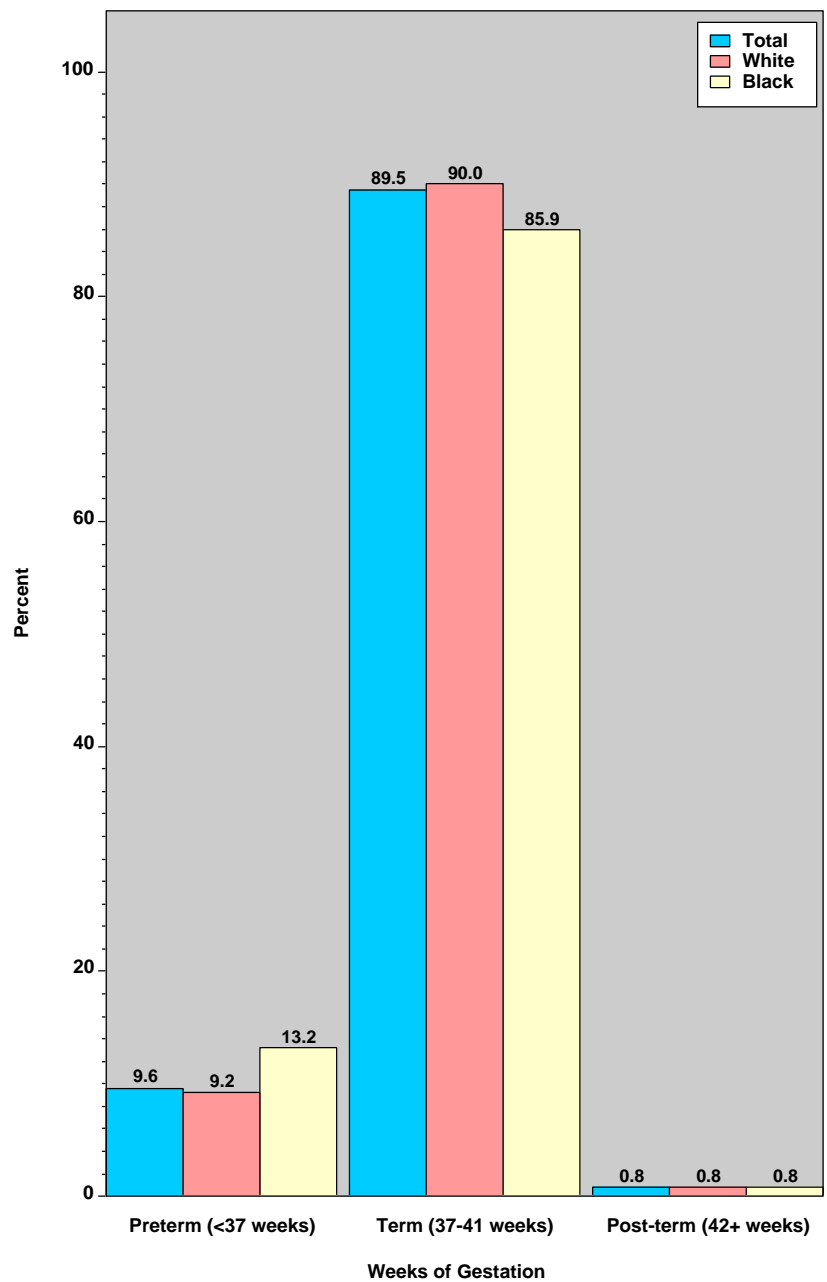
Percent of Low Birthweight Infants by Weeks of Gestation and Race of Mother: Indiana Residents, 2013



This figure was run on January 27, 2015.
Source: ISDH, ERC, DAT; Table 18

Figure 10

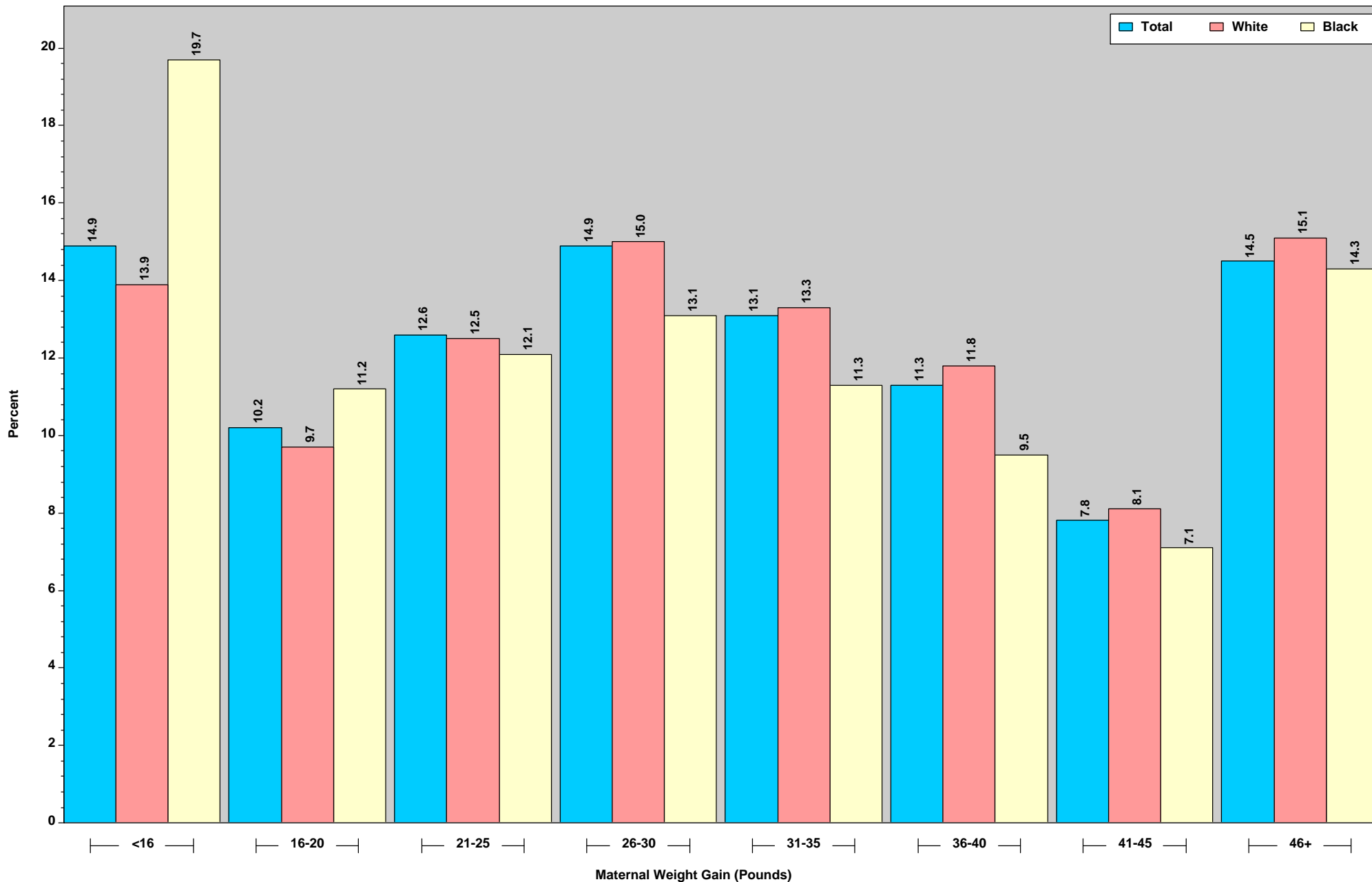
Percent of Live Births by Weeks of Gestation and Race of Mother: Indiana Residents, 2013



This figure was run on January 27, 2015.
Source: ISDH, ERC, DAT; Table 18

Figure 11

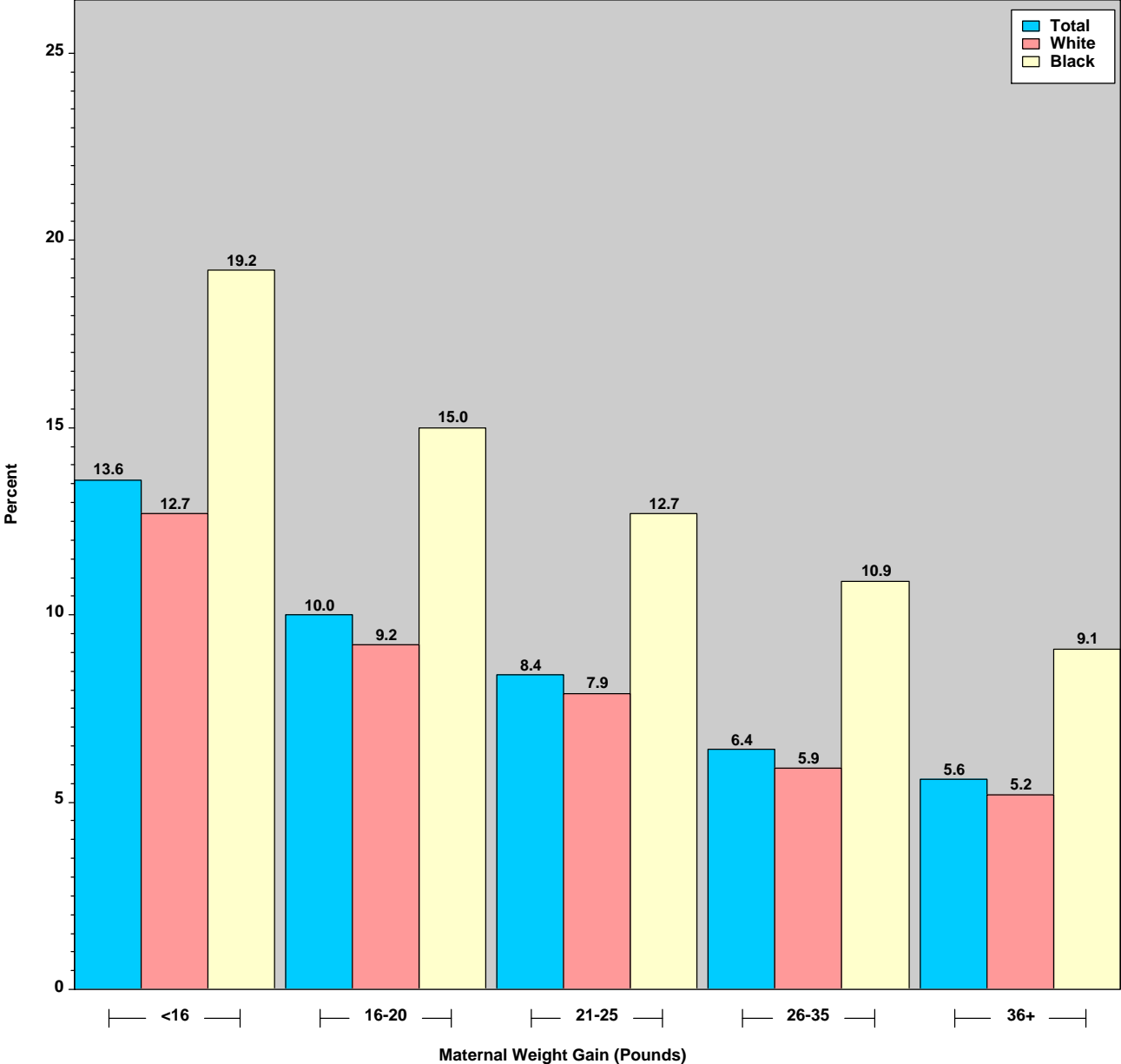
Percent of Live Births by Maternal Weight Gain and Race of Mother: Indiana Residents, 2013



This figure was run on January 27, 2015.
Source: ISDH, ERC, DAT

Figure 12

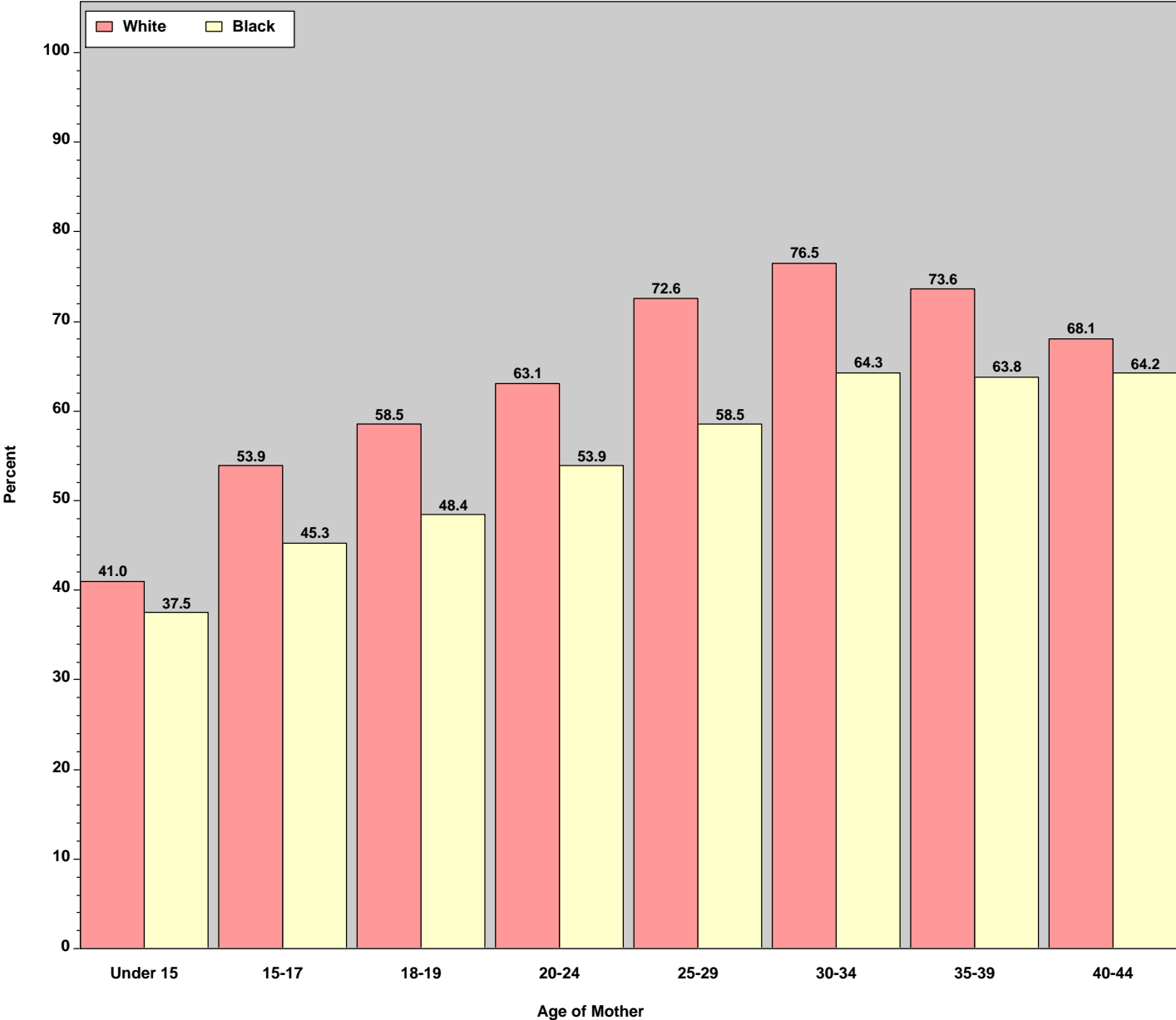
Percent of Low Birthweight Infants by Maternal Weight Gain and Race of Mother: Indiana Residents, 2013



This figure was run on January 27, 2015.
Source: ISDH, ERC, DAT

Figure 13

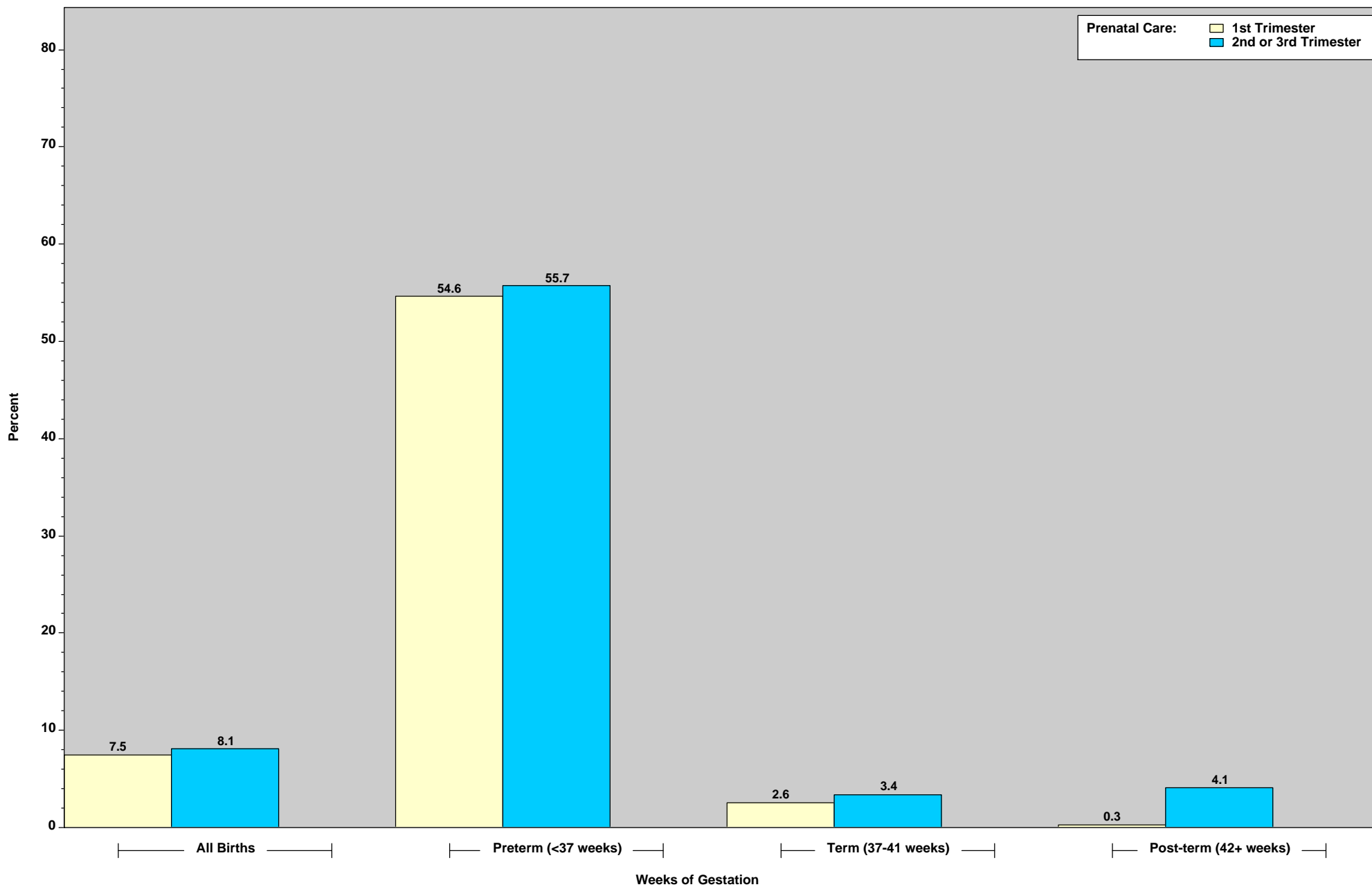
Percent of Live Births with Prenatal Care in the First Trimester by Age and Race of Mother: Indiana Residents, 2013



This figure was run on January 27, 2015.
Source: ISDH, ERC, DAT; Table 24

Figure 14

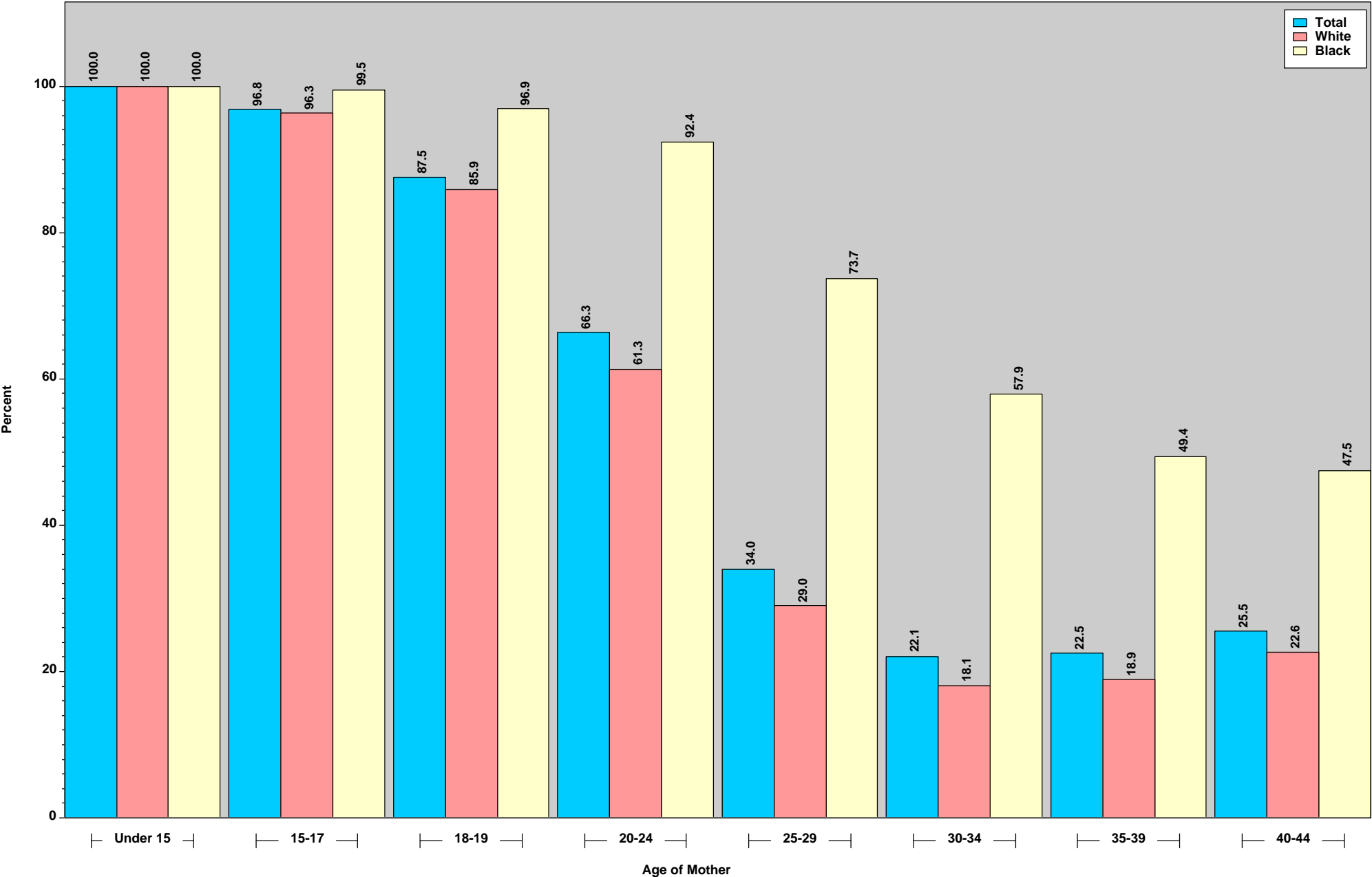
Percent of Low Birthweight Infants by Gestation and Prenatal Care: Indiana Residents, 2013



This figure was run on January 27, 2015.
Source: ISDH, ERC, DAT

Figure 15

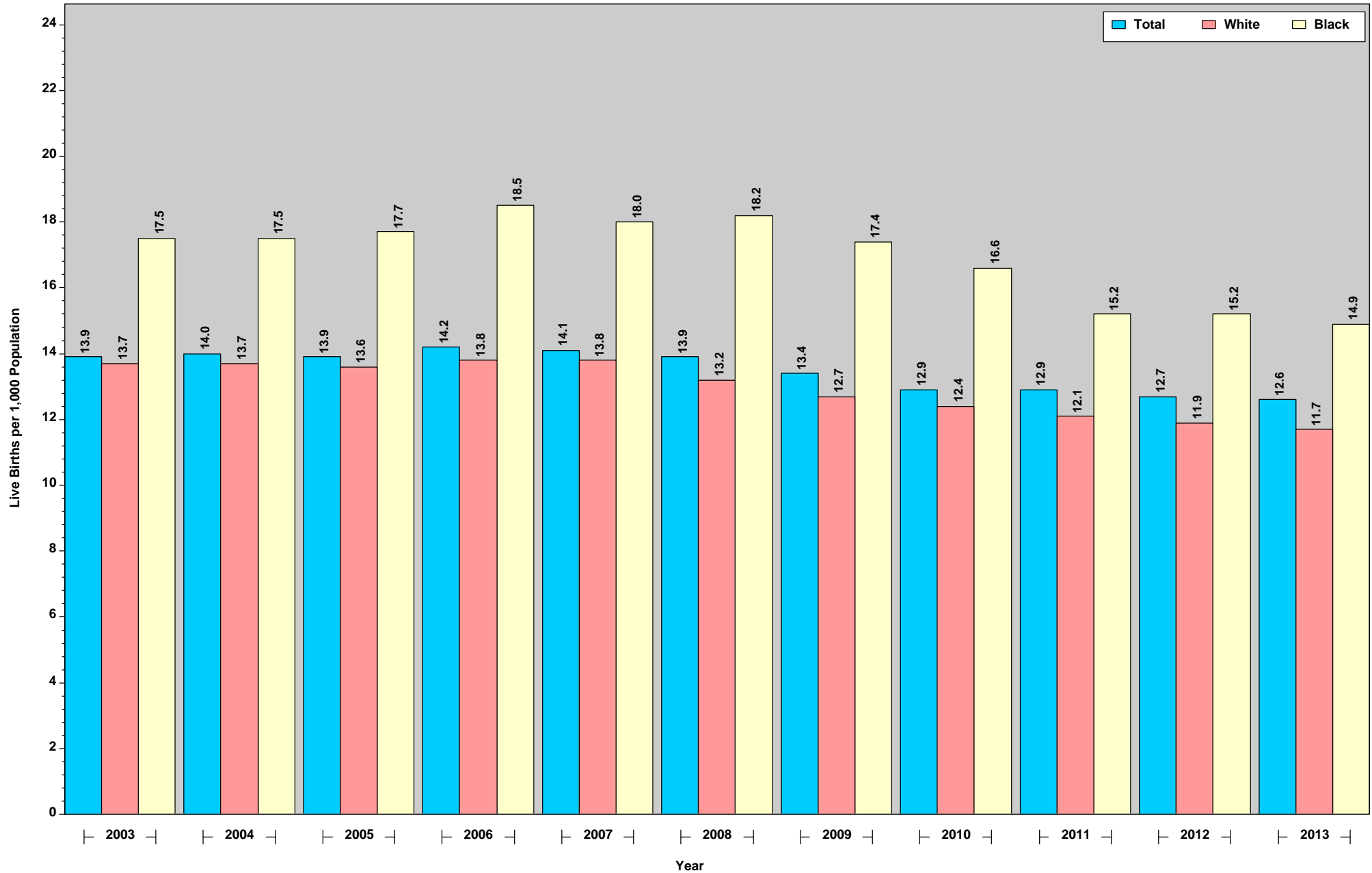
Percent of Live Births to Unmarried Parents by Age and Race of Mother: Indiana Residents, 2013



This figure was run on January 27, 2015.
Source: ISDH, ERC, DAT; Table 25

Figure 16

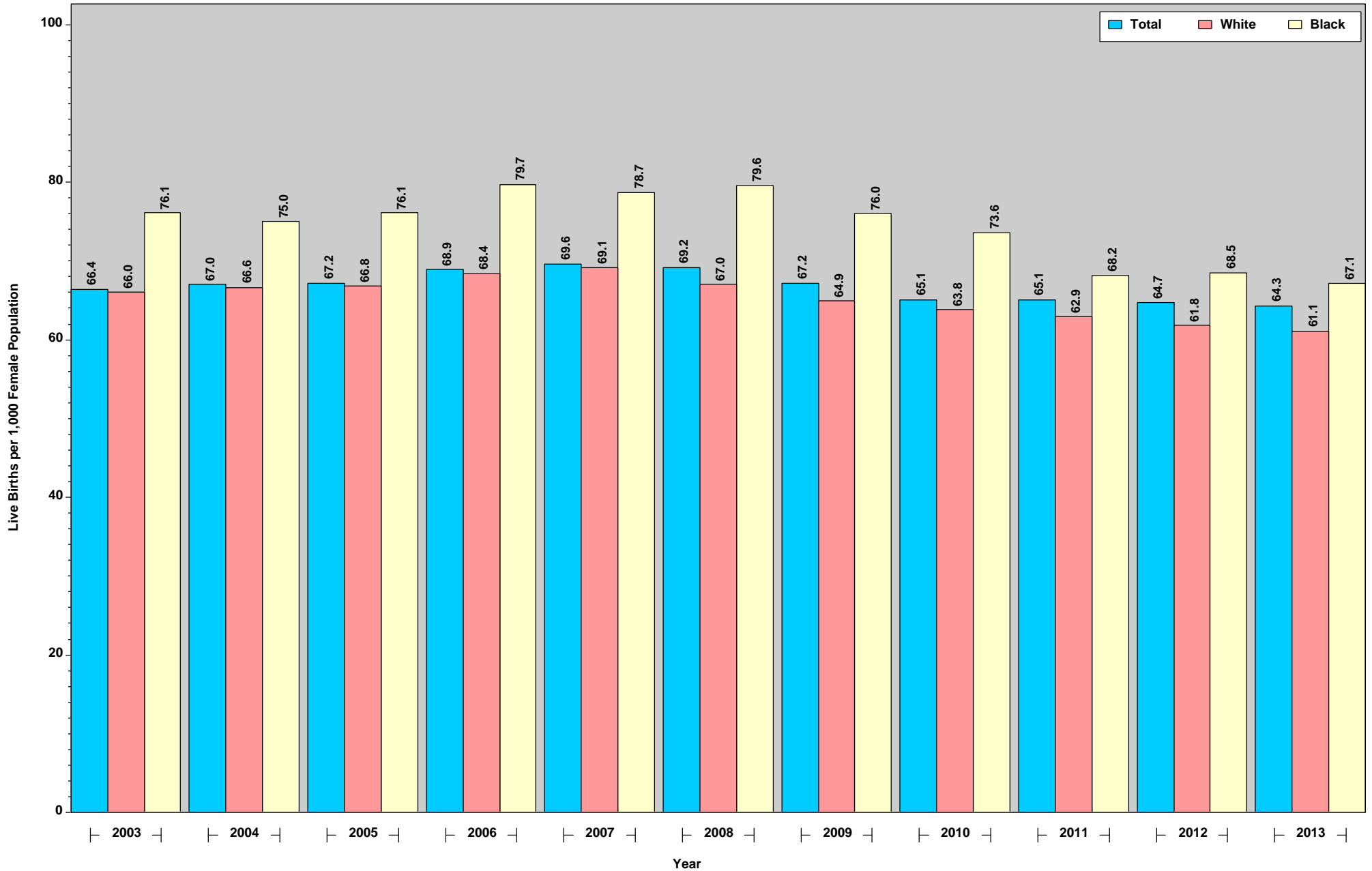
Crude Births Rates by Year and Race of Mother: Indiana Residents, 2003 to 2013



This figure was run on January 27, 2015.
Source: ISDH, ERC, DAT; Table 28 (2013)

Figure 17

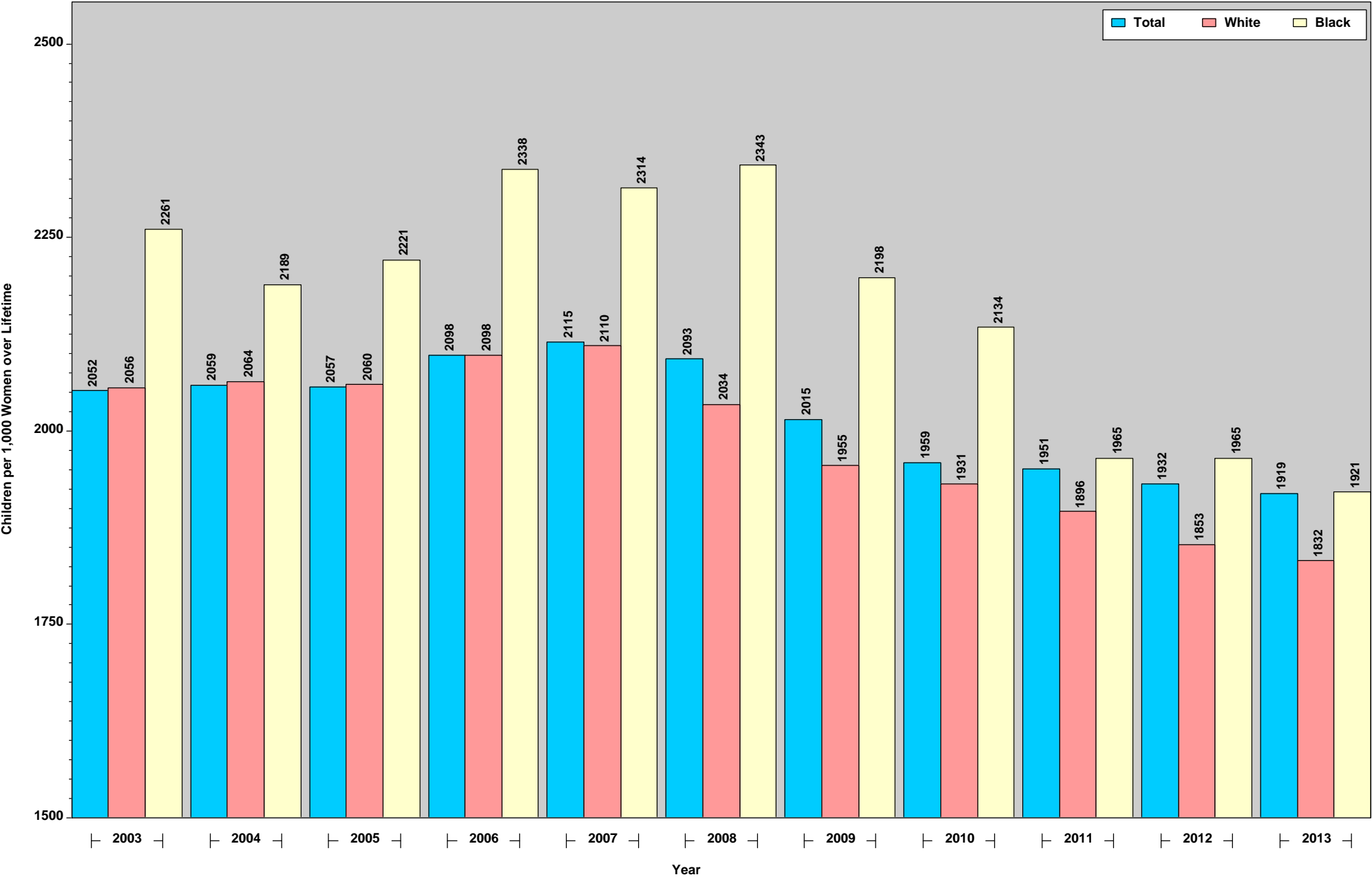
General Fertility Rates by Year and Race of Mother: Indiana Residents, 2003 to 2013



This figure was run on January 27, 2015.
Source: ISDH, ERC, DAT; Table 13 (2013)

Figure 18

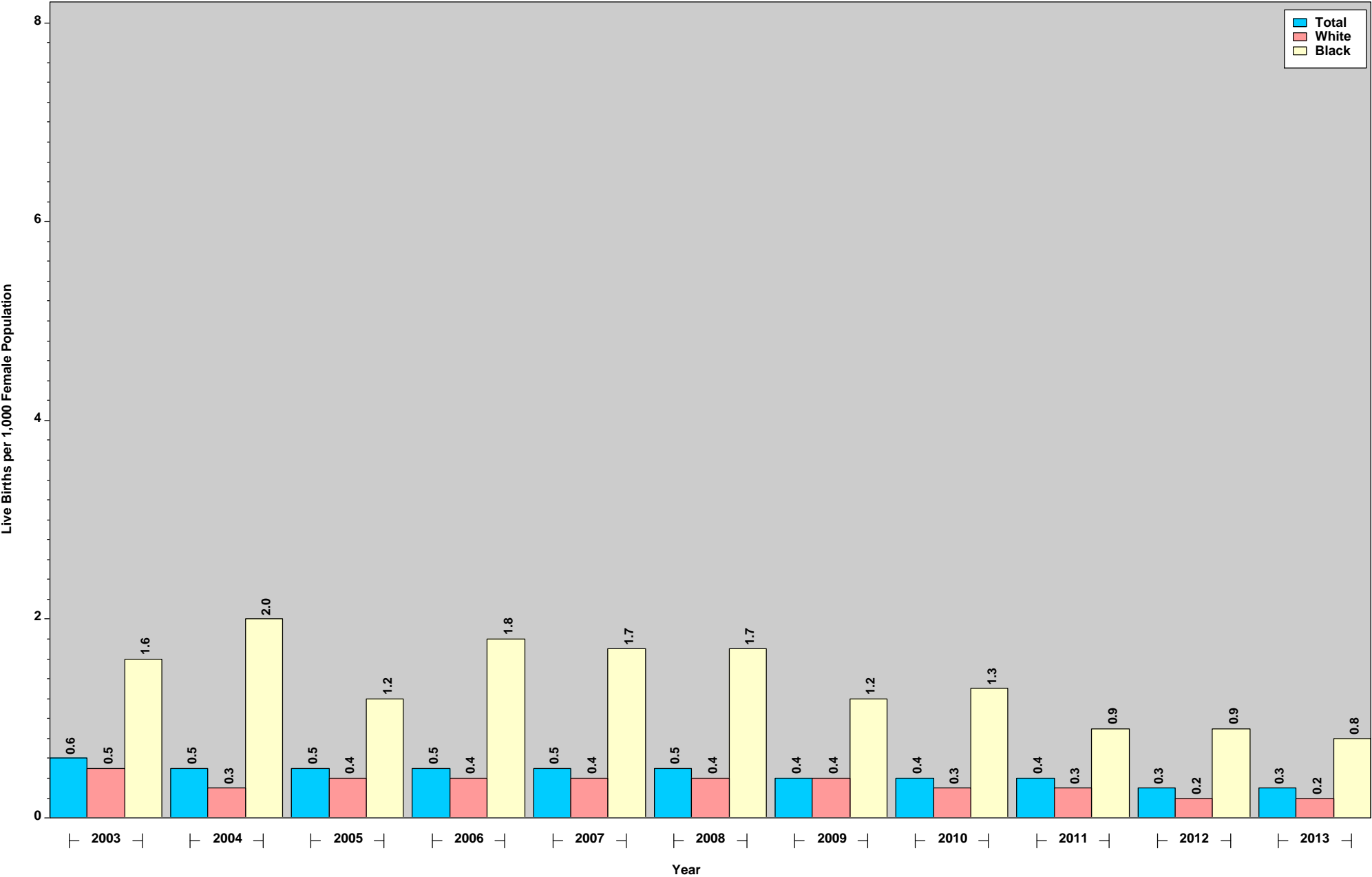
Total Fertility Rates by Year and Race of Mother: Indiana Residents, 2003 to 2013



This figure was run on January 27, 2015.
Source: ISDH, ERC, DAT; Table 13 (2013)

Figure 19

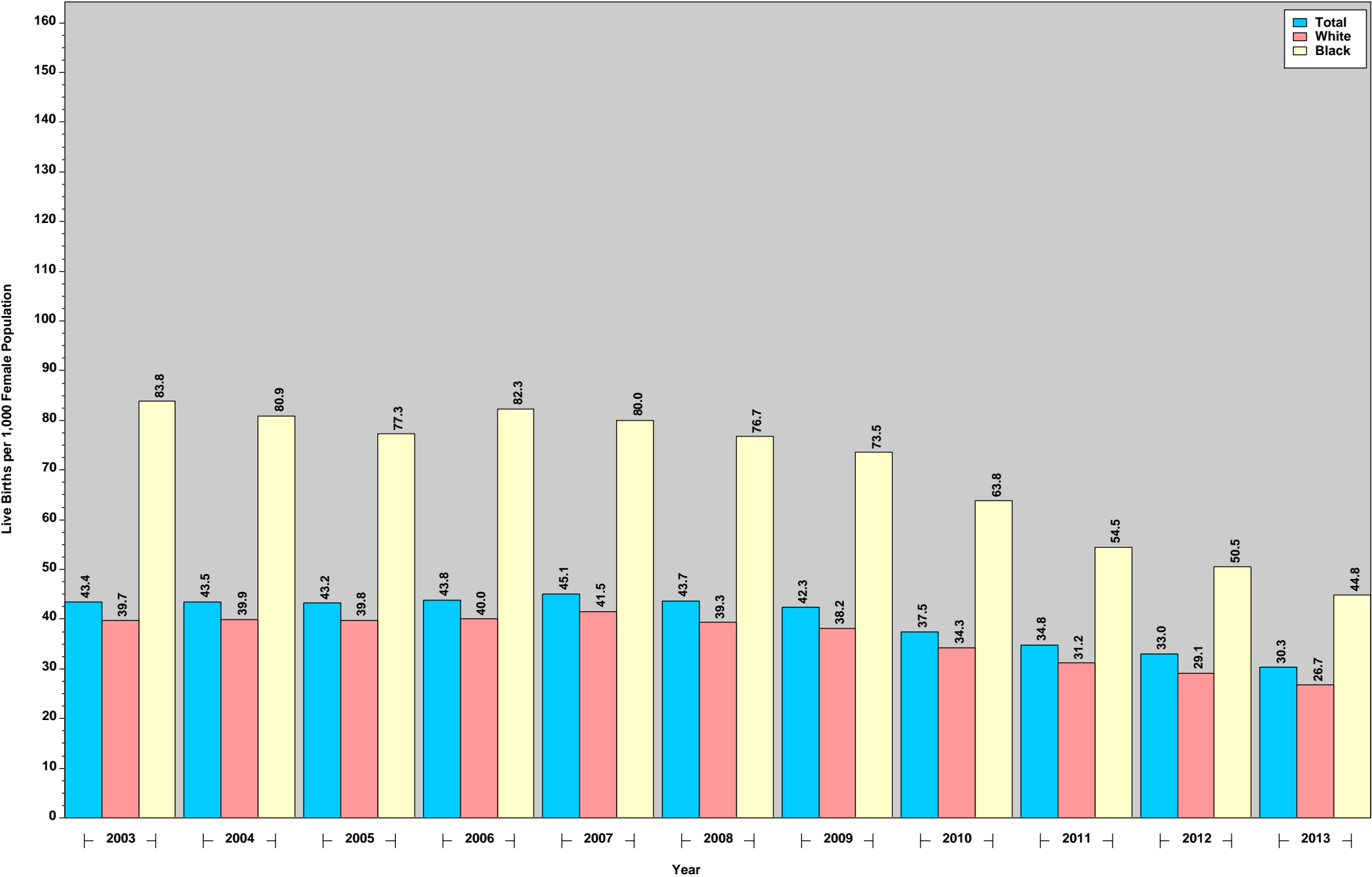
Birth Rates for Ages Under 15 by Race of Mother: Indiana Residents, 2003 to 2013



This figure was run on January 27, 2015.
Source: ISDH, ERC, DAT; Table 13 (2013)

Figure 20

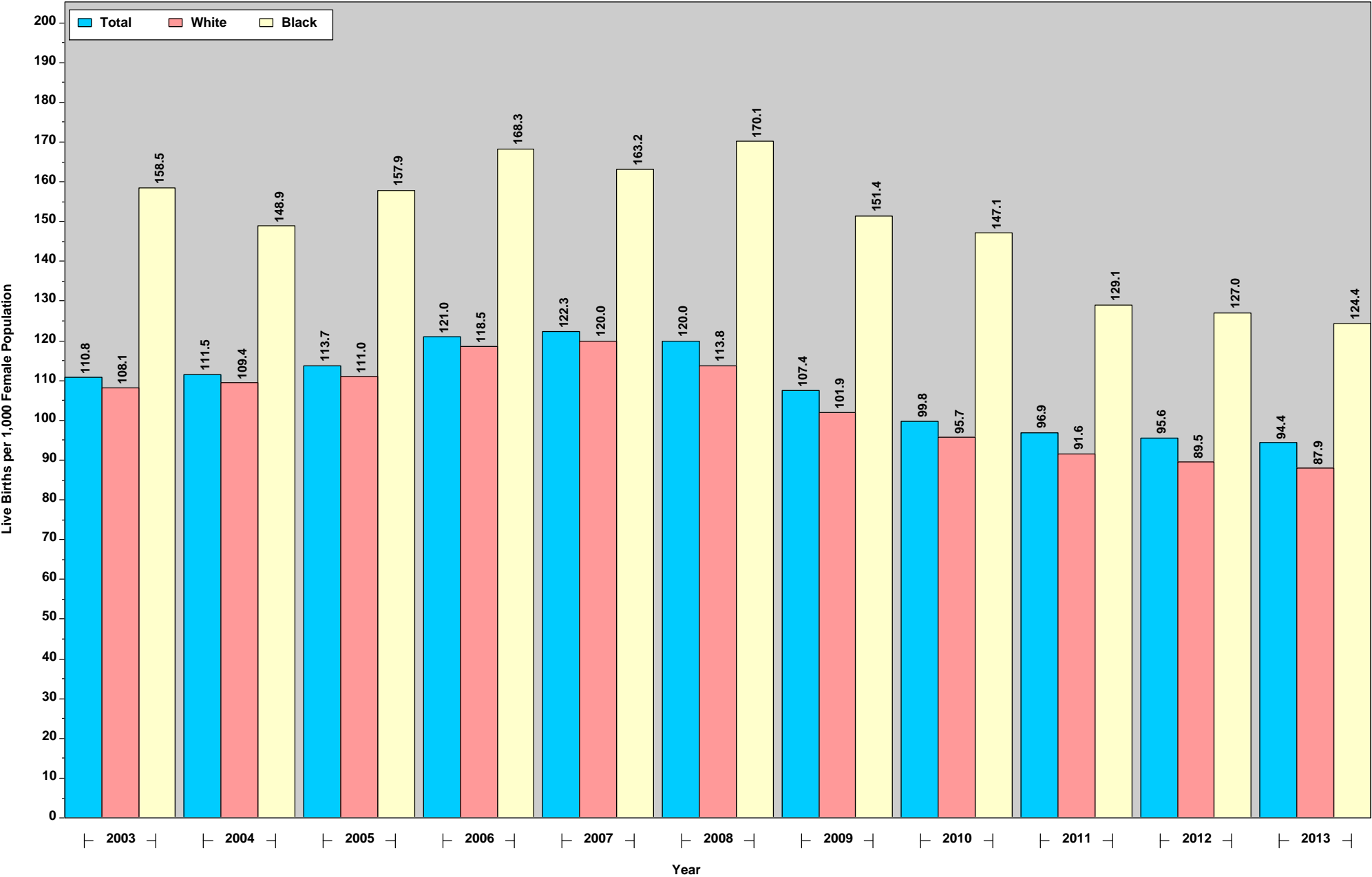
Birth Rates for Ages 15 to 19 by Race of Mother: Indiana Residents, 2003 to 2013



This figure was run on January 27, 2015.
Source: ISDH, ERC, DAT; Table 13 (2013)

Figure 21

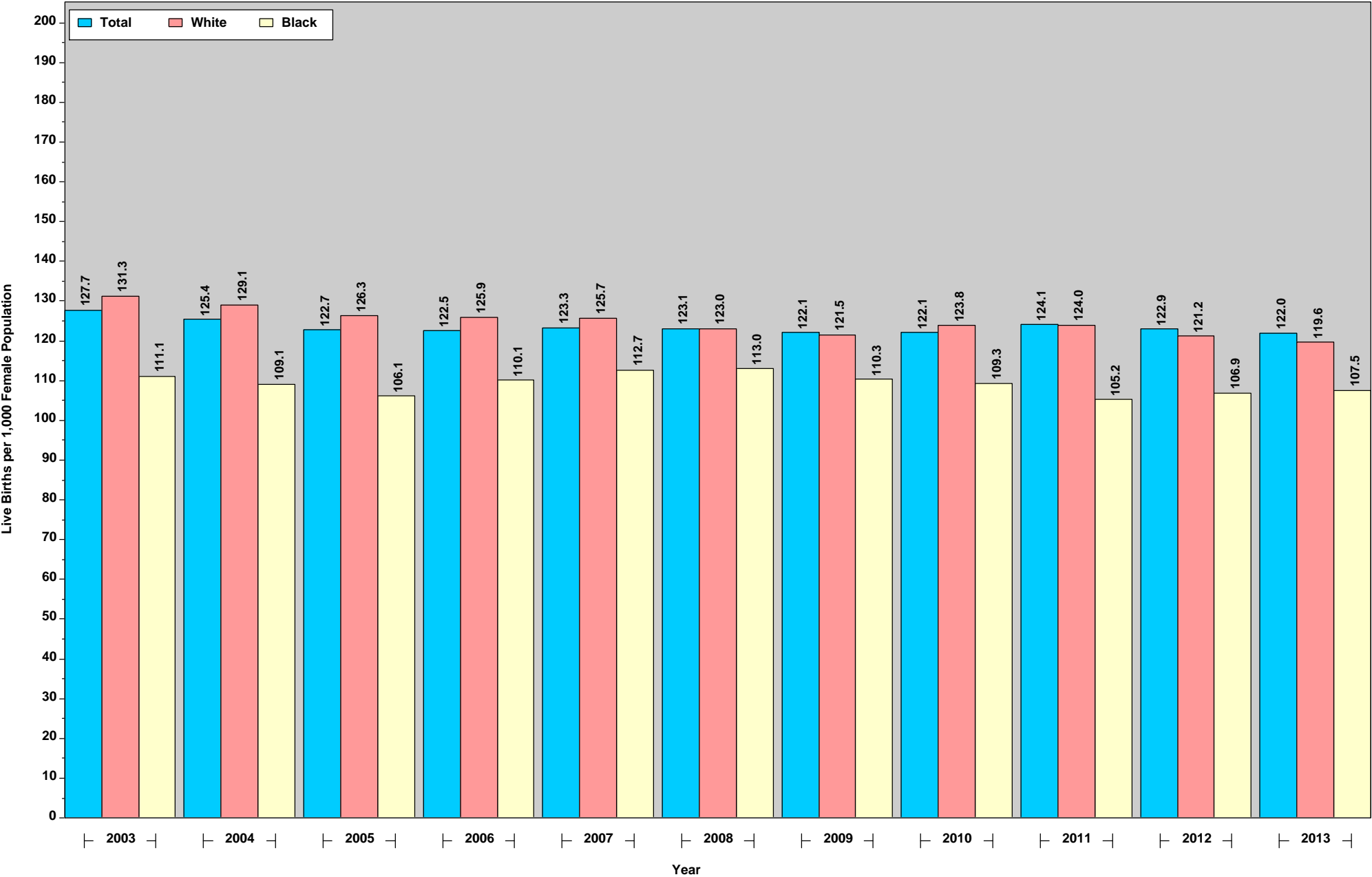
Birth Rates for Ages 20 to 24 by Race of Mother: Indiana Residents, 2003 to 2013



This figure was run on January 27, 2015.
Source: ISDH, ERC, DAT; Table 13 (2013)

Figure 22

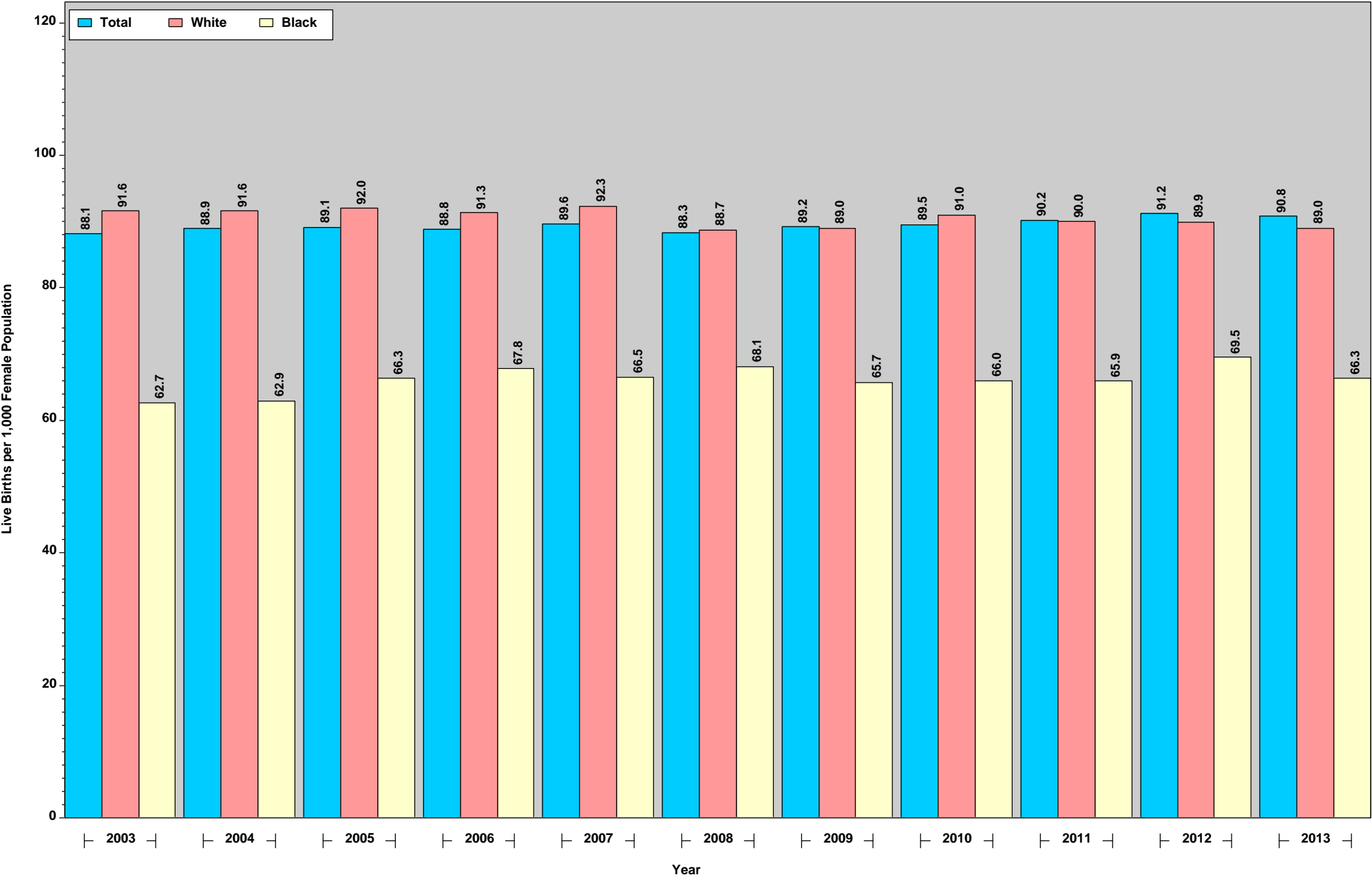
Birth Rates for Ages 25 to 29 by Race of Mother: Indiana Residents, 2003 to 2013



This figure was run on January 27, 2015.
Source: ISDH, ERC, DAT; Table 13 (2013)

Figure 23

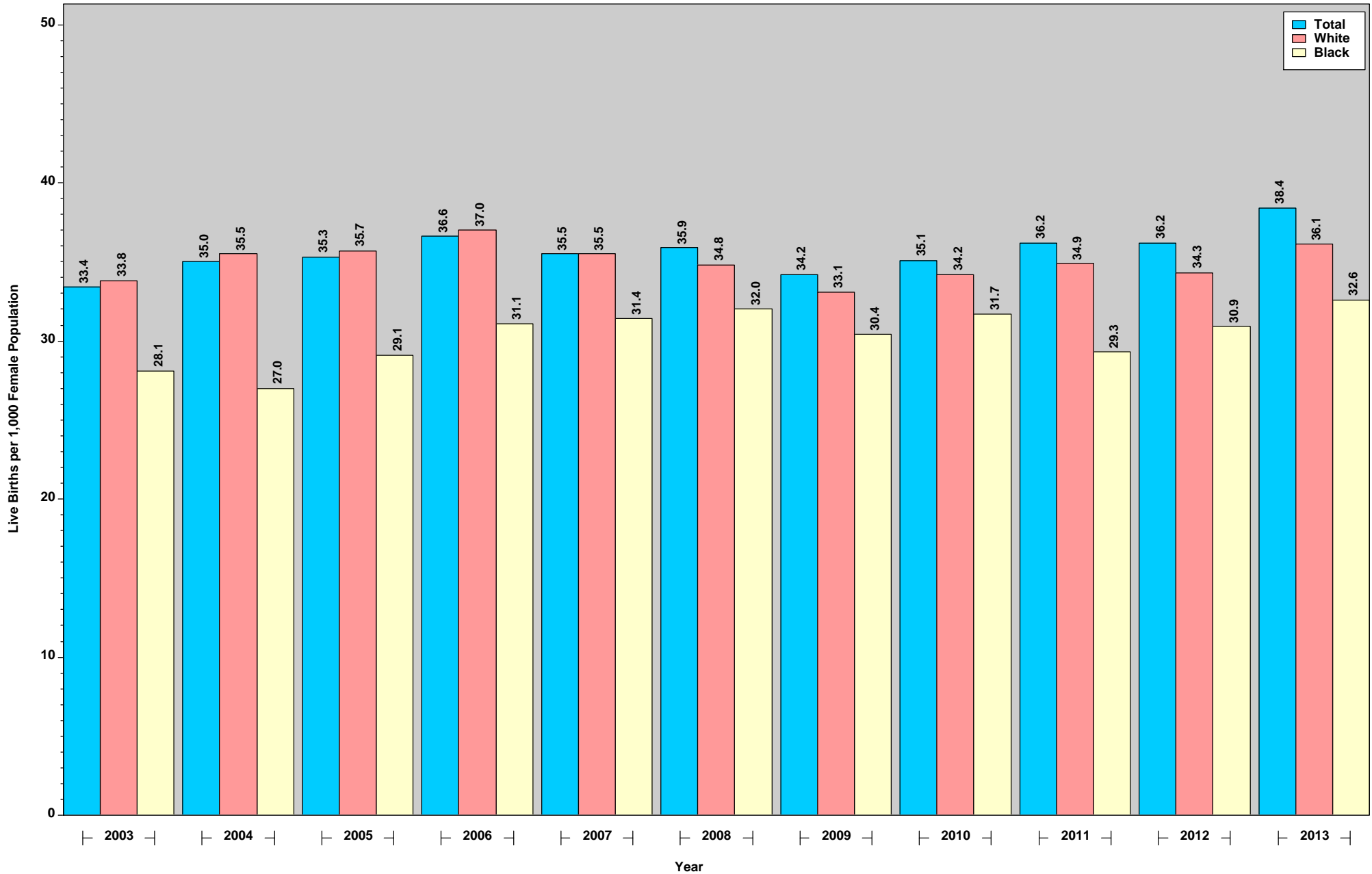
Birth Rates for Ages 30 to 34 by Race of Mother: Indiana Residents, 2003 to 2013



This figure was run on January 27, 2015.
Source: ISDH, ERC, DAT; Table 13 (2013)

Figure 24

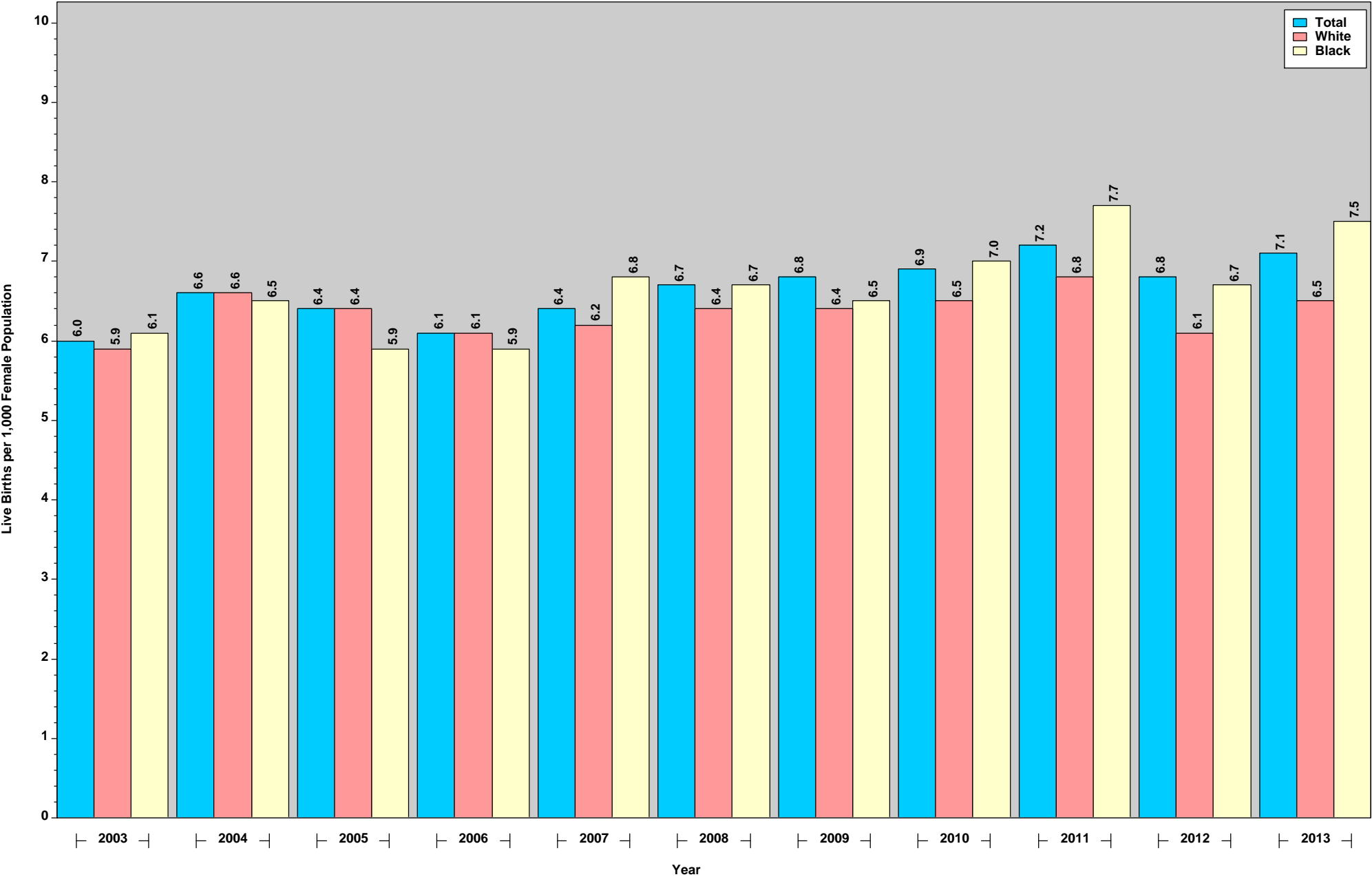
Birth Rates for Ages 35 to 39 by Race of Mother: Indiana Residents, 2003 to 2013



This figure was run on January 27, 2015.
Source: ISDH, ERC, DAT; Table 13 (2013)

Figure 25

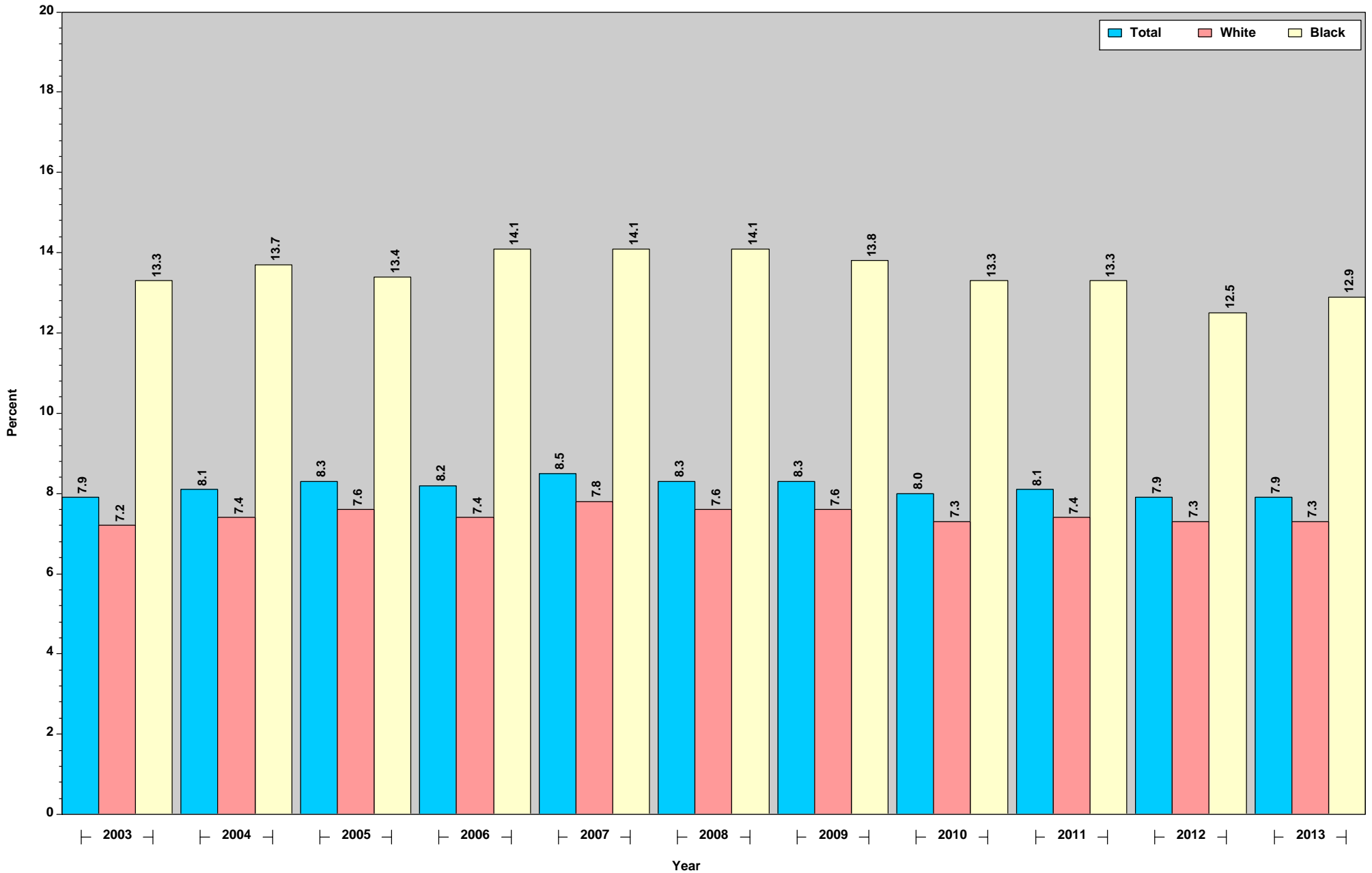
Birth Rates for Ages 40 to 44 by Race of Mother: Indiana Residents, 2003 to 2013



This figure was run on January 27, 2015.
Source: ISDH, ERC, DAT; Table 13 (2013)

Figure 26

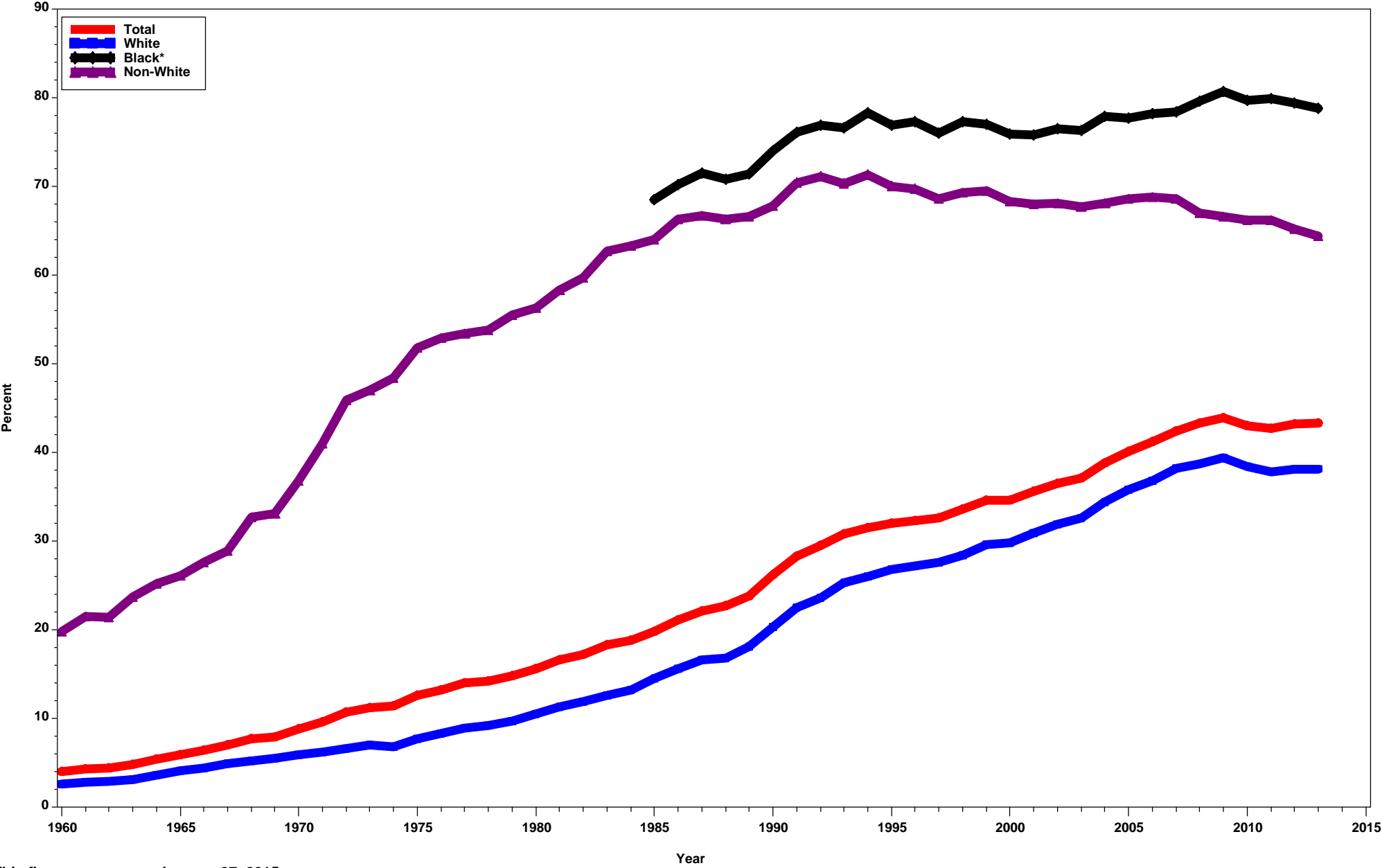
Percent of Low Birthweight Infants by Year and Race of Mother: Indiana Residents, 2003 to 2013



This figure was run on January 27, 2015.
Source: ISDH, ERC, DAT; Table 6

Figure 27

Percent of Live Births to Unmarried Parents by Race of Mother: Indiana Residents, 1960-2013



This figure was run on January 27, 2015.
*Information not available prior to 1985. These births were reported as non-white.
Source: ISDH, ERC, DAT; Table 25