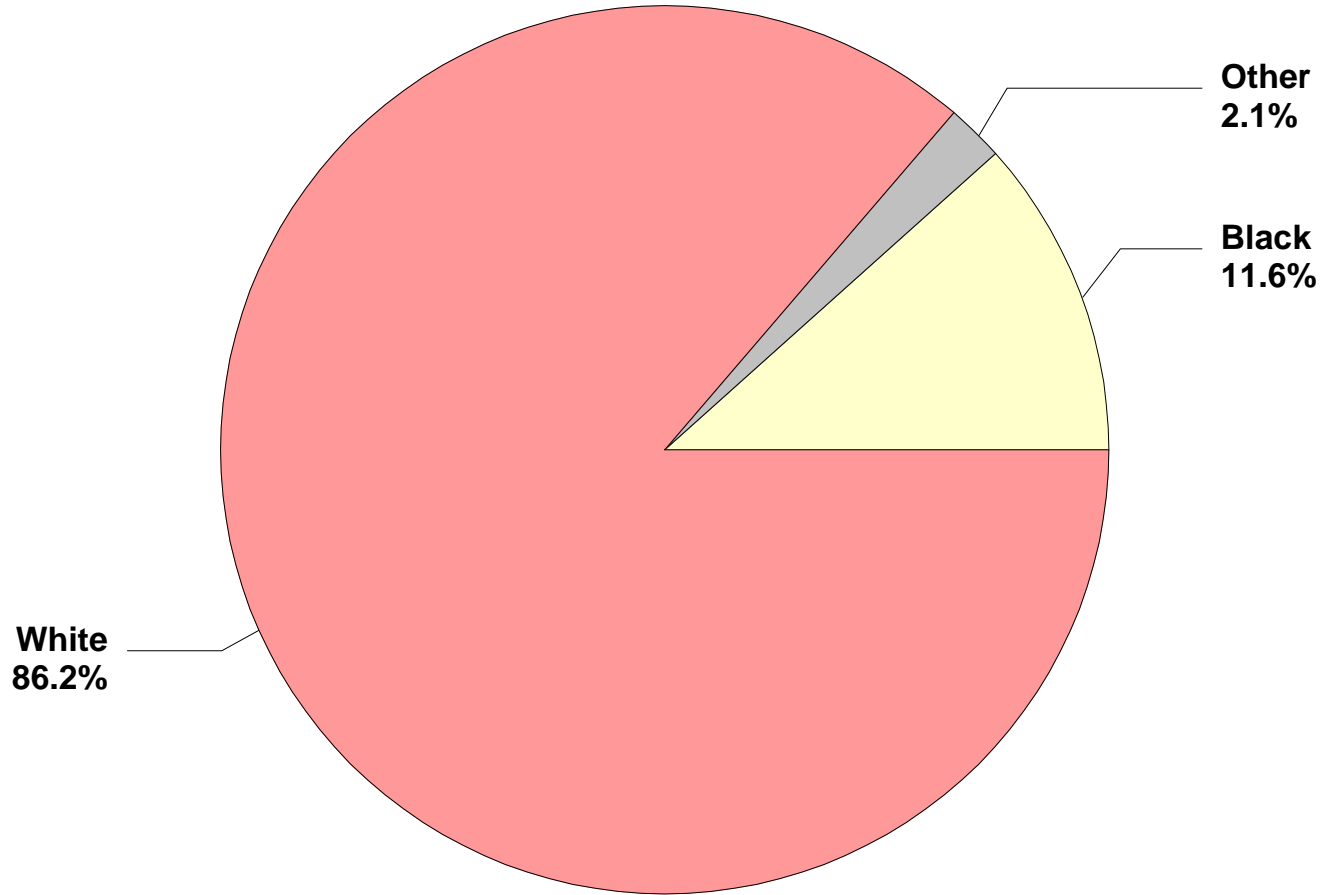
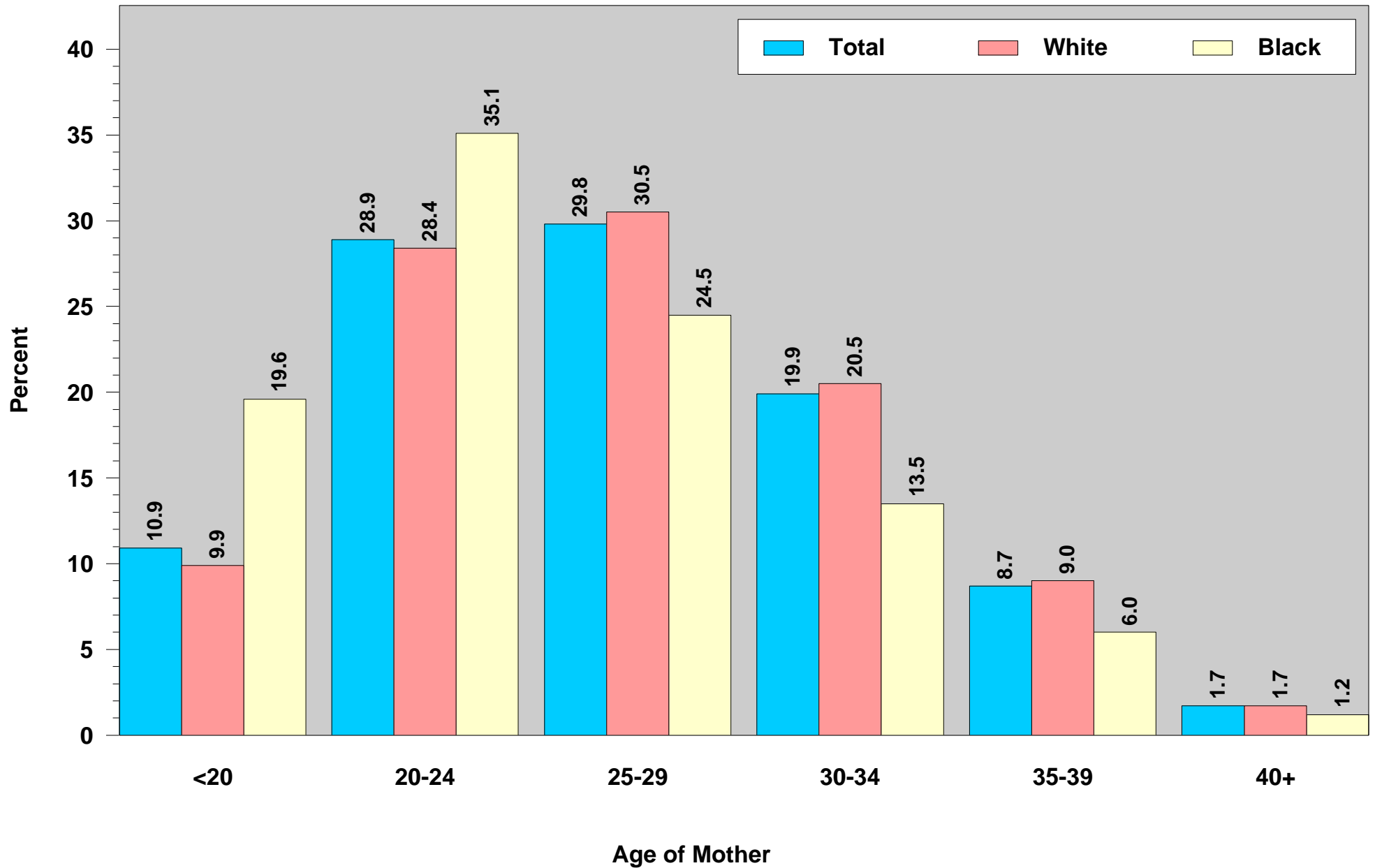


**Percent of Live Births by Race of Mother:
Indiana Residents, 2006**



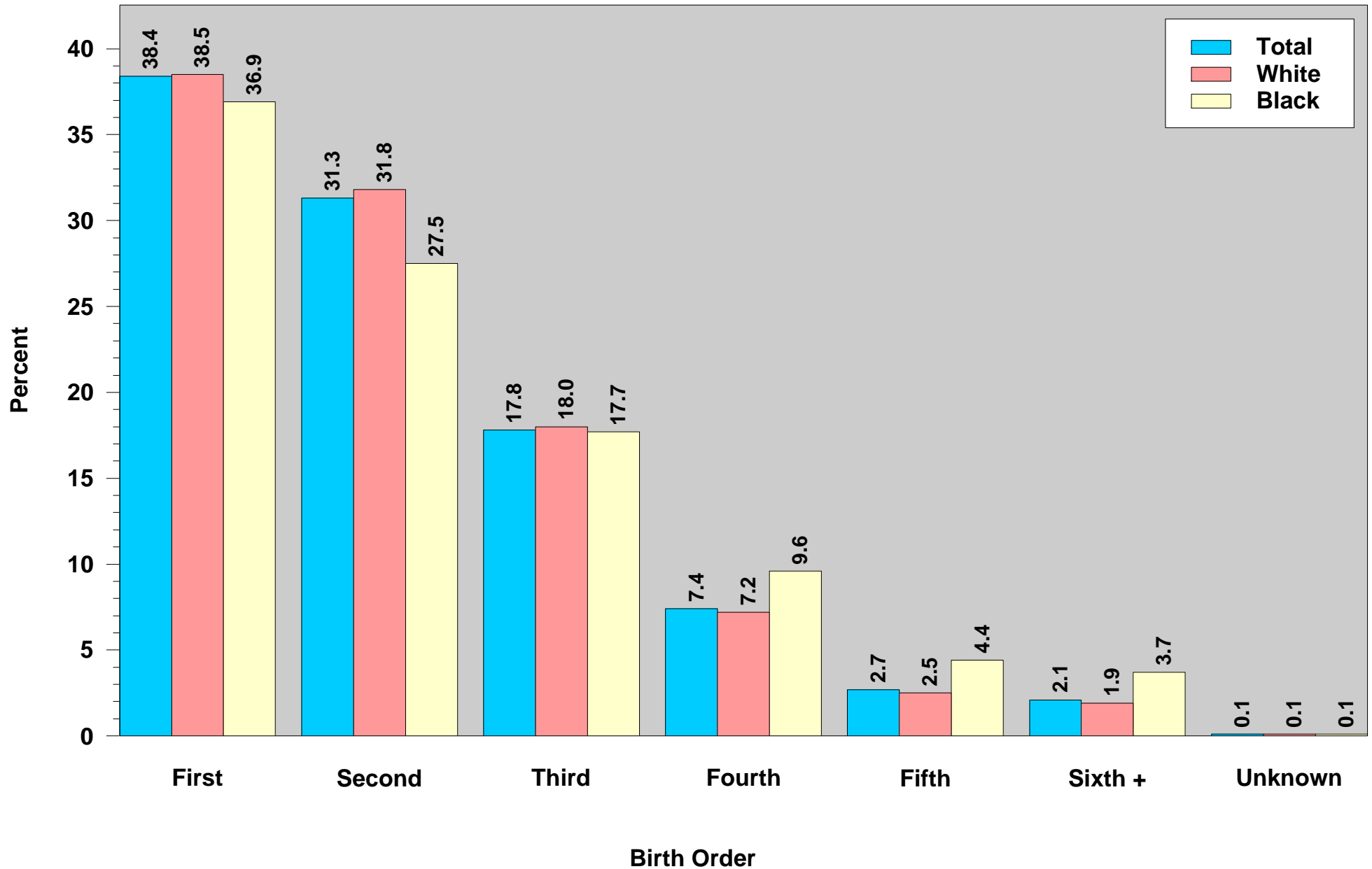
Indiana Natality Report, 2006
Figure 2

**Percent of Live Births by Age and Race of Mother:
Indiana Residents, 2006**



This figure was run on July 2, 2008.
Source: ISDH, PHSD, DAT; Table 3

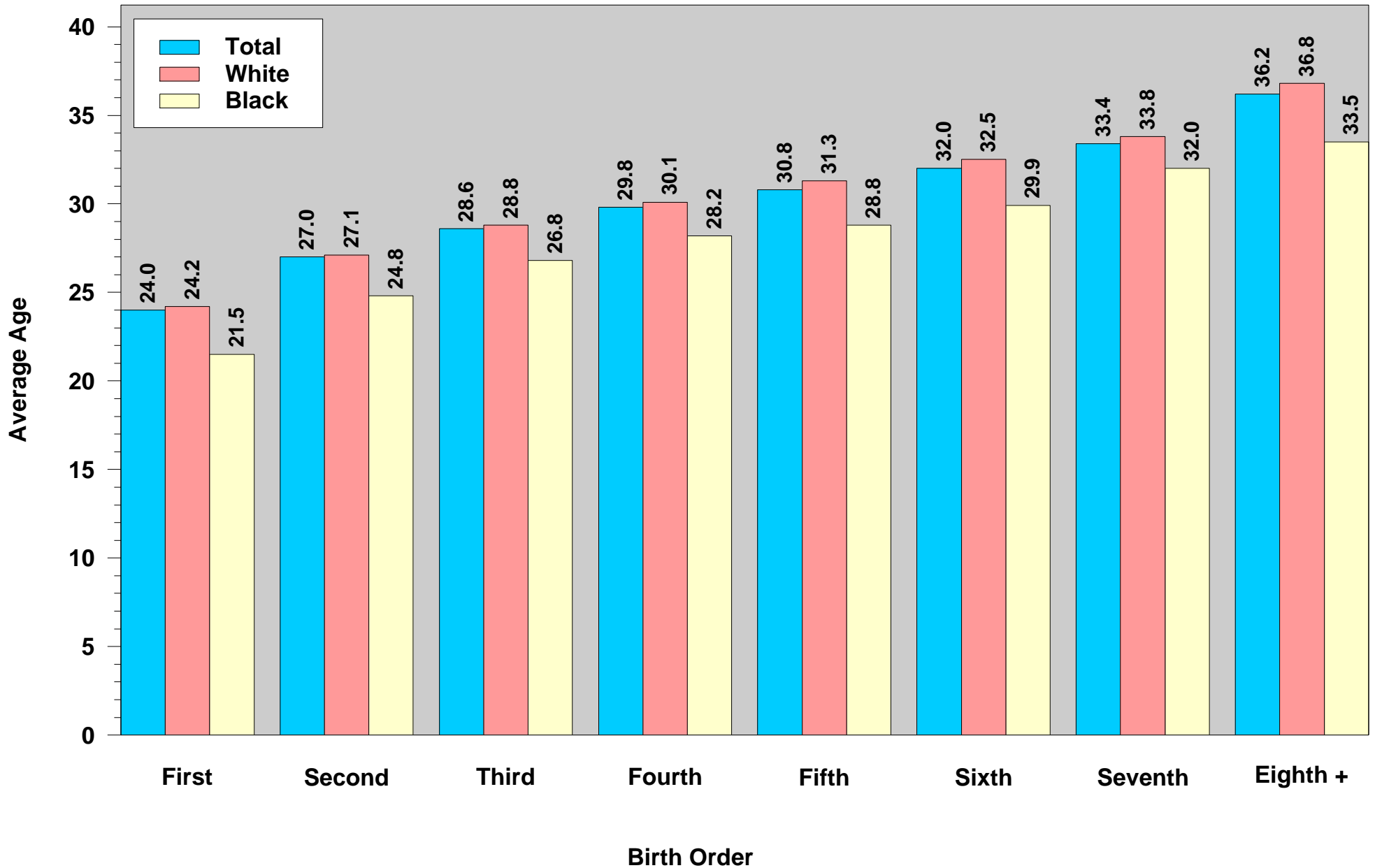
Percent of Live Births by Birth Order and Race of Mother: Indiana Residents, 2006



Indiana Natality Report, 2006

Figure 4

Average Age of Mother by Live Birth Order and Race: Indiana Residents, 2006

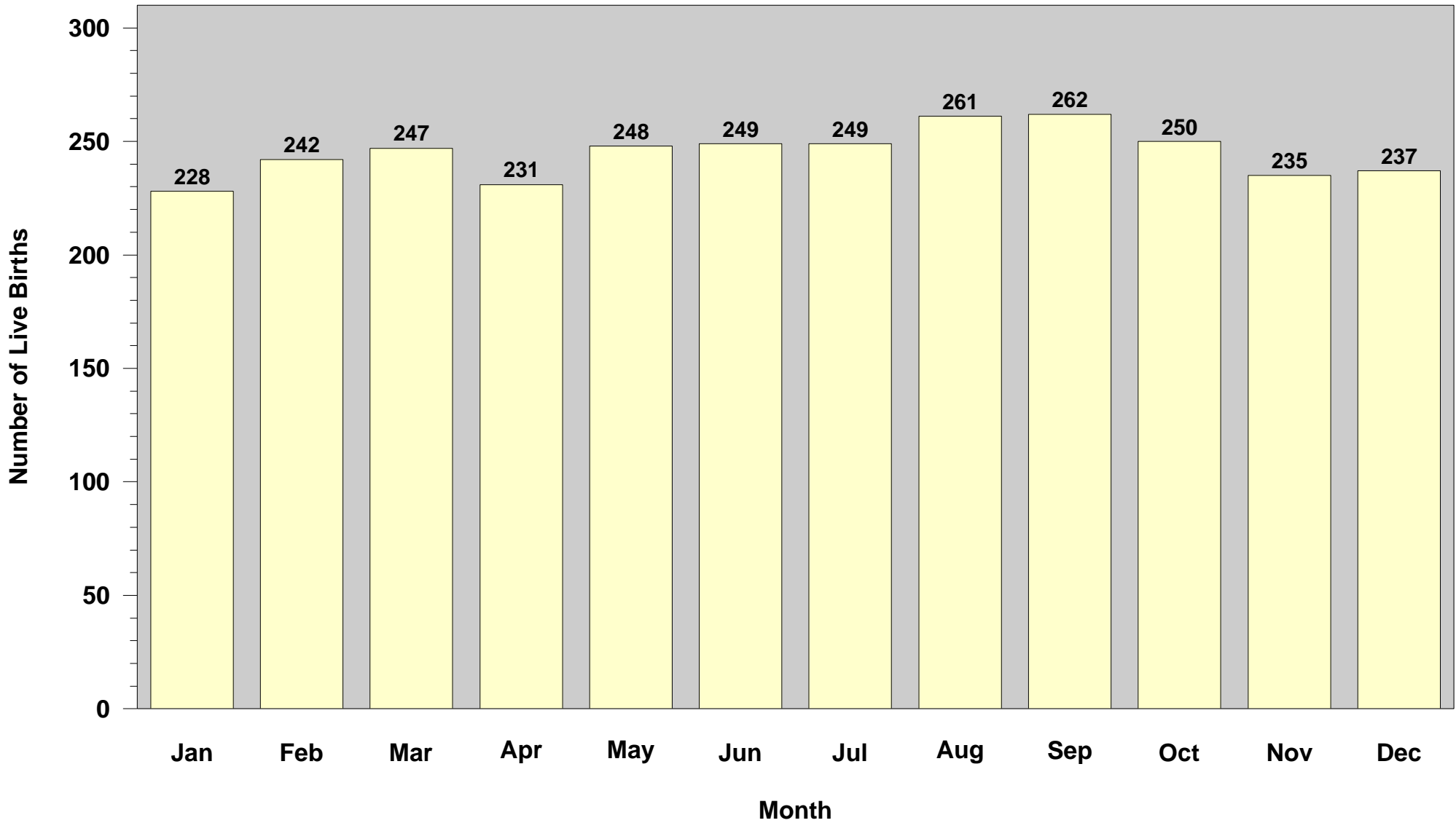


This figure was run on July 2, 2008.
Source: ISDH, PHSD, DAT

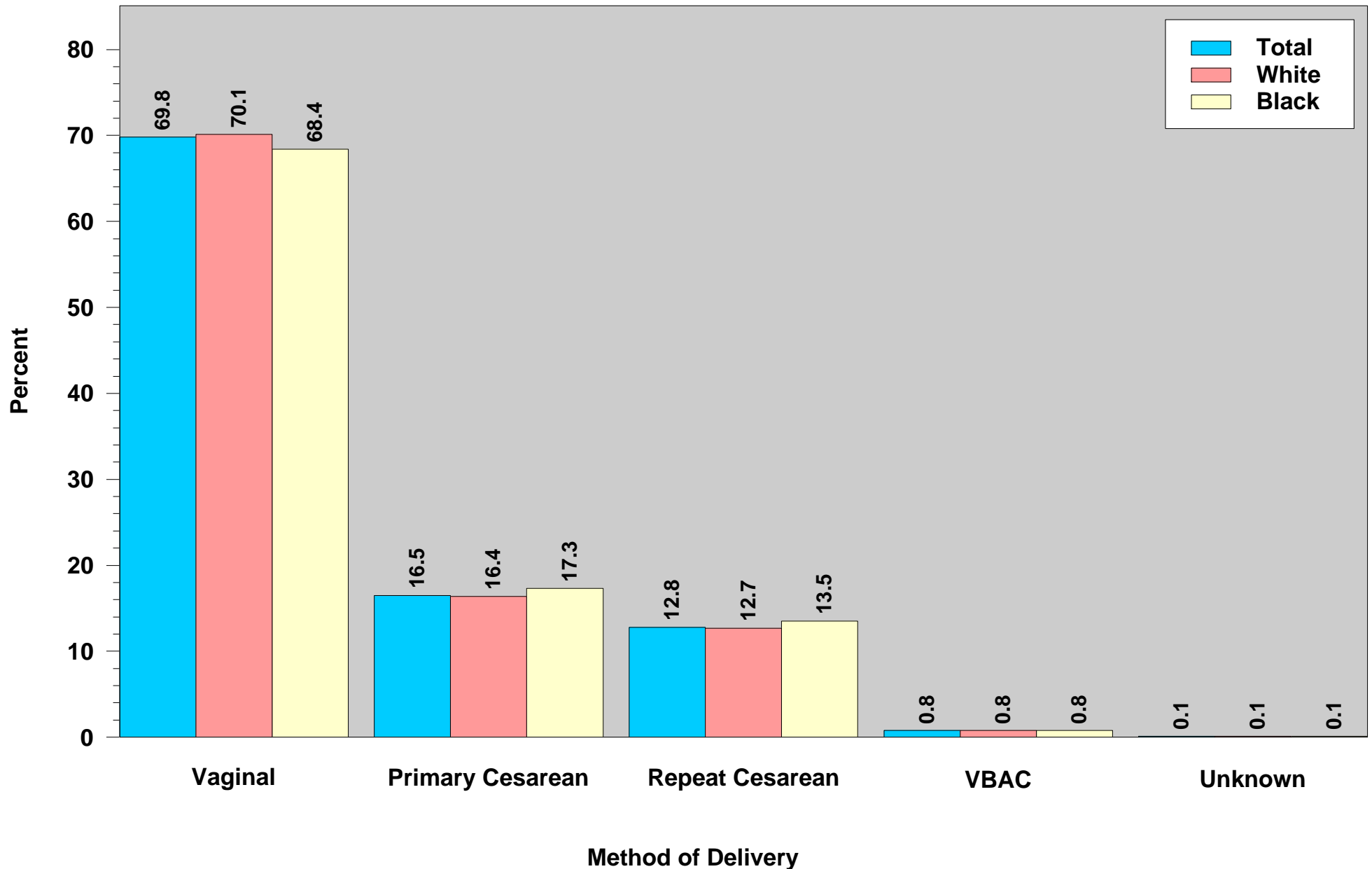
Indiana Natality Report, 2006

Figure 5

**Average Number of Live Births per Day by Month:
Indiana Residents, 2006**

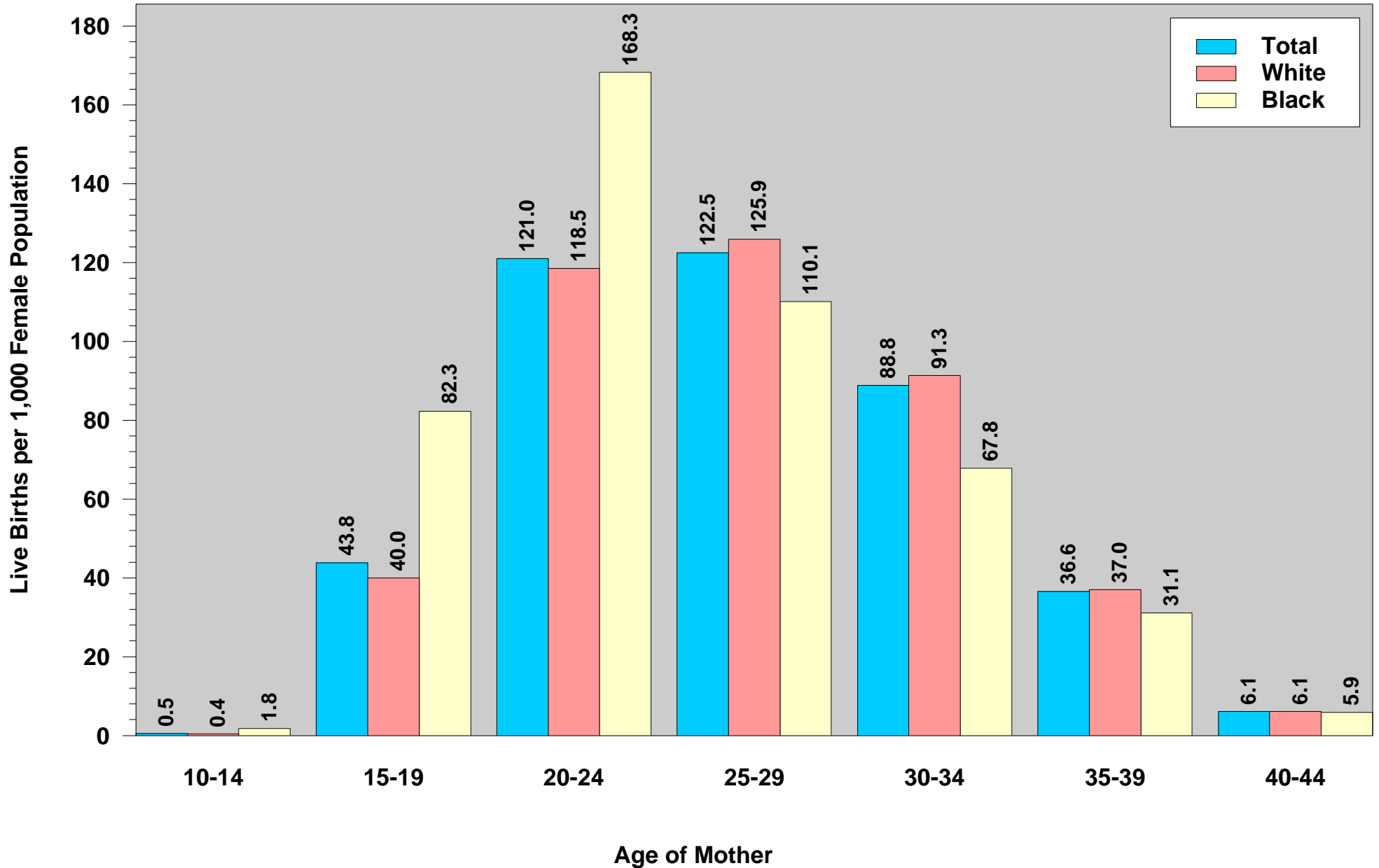


Percent of Live Births by Method of Delivery and Race of Mother: Indiana Residents, 2006



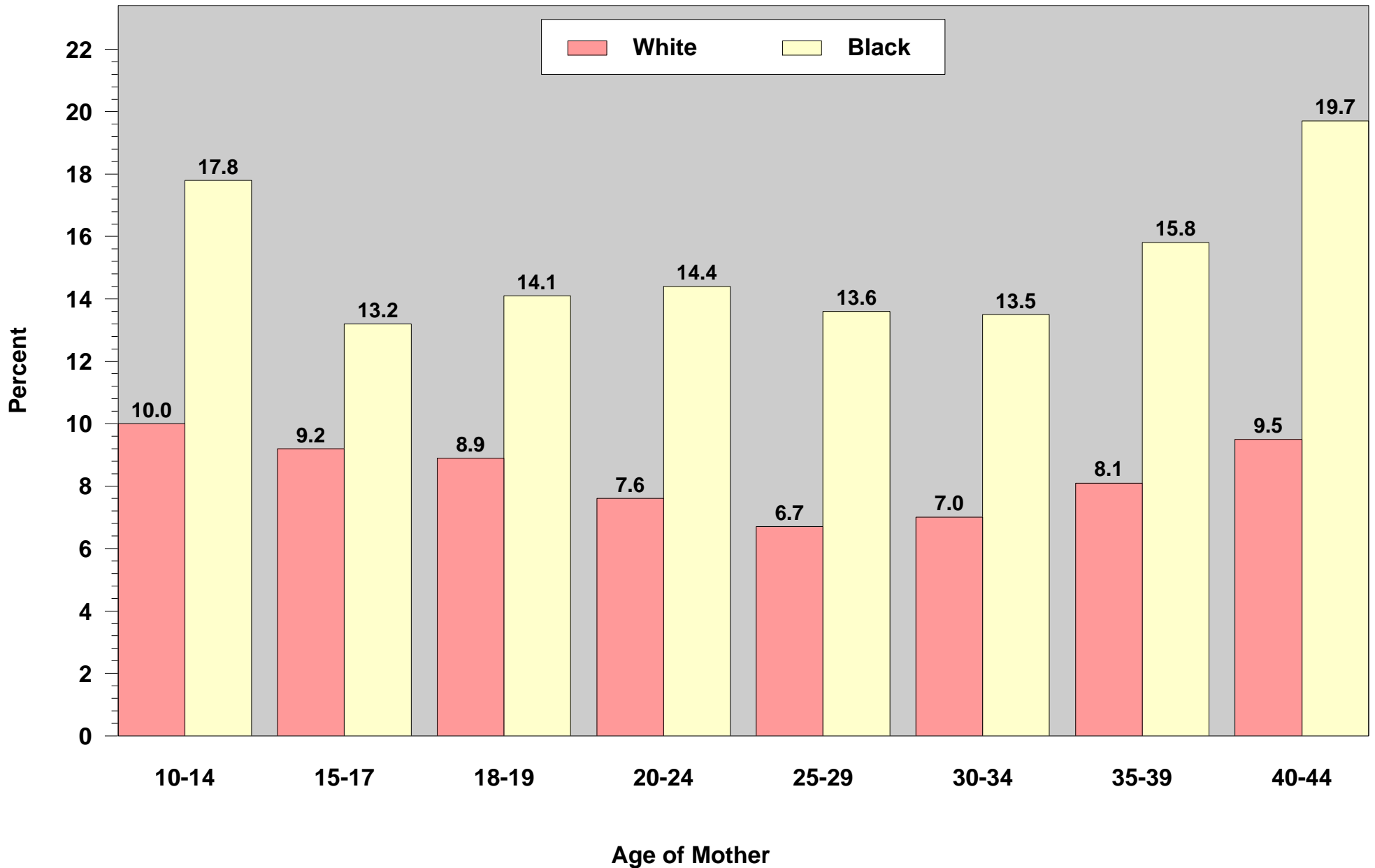
Indiana Natality Report, 2006
Figure 7

**Age-Specific Birth Rates by Race of Mother:
Indiana Residents, 2006**



This figure was run on July 2, 2008.
Source: ISDH, PHSD, DAT; Table 13

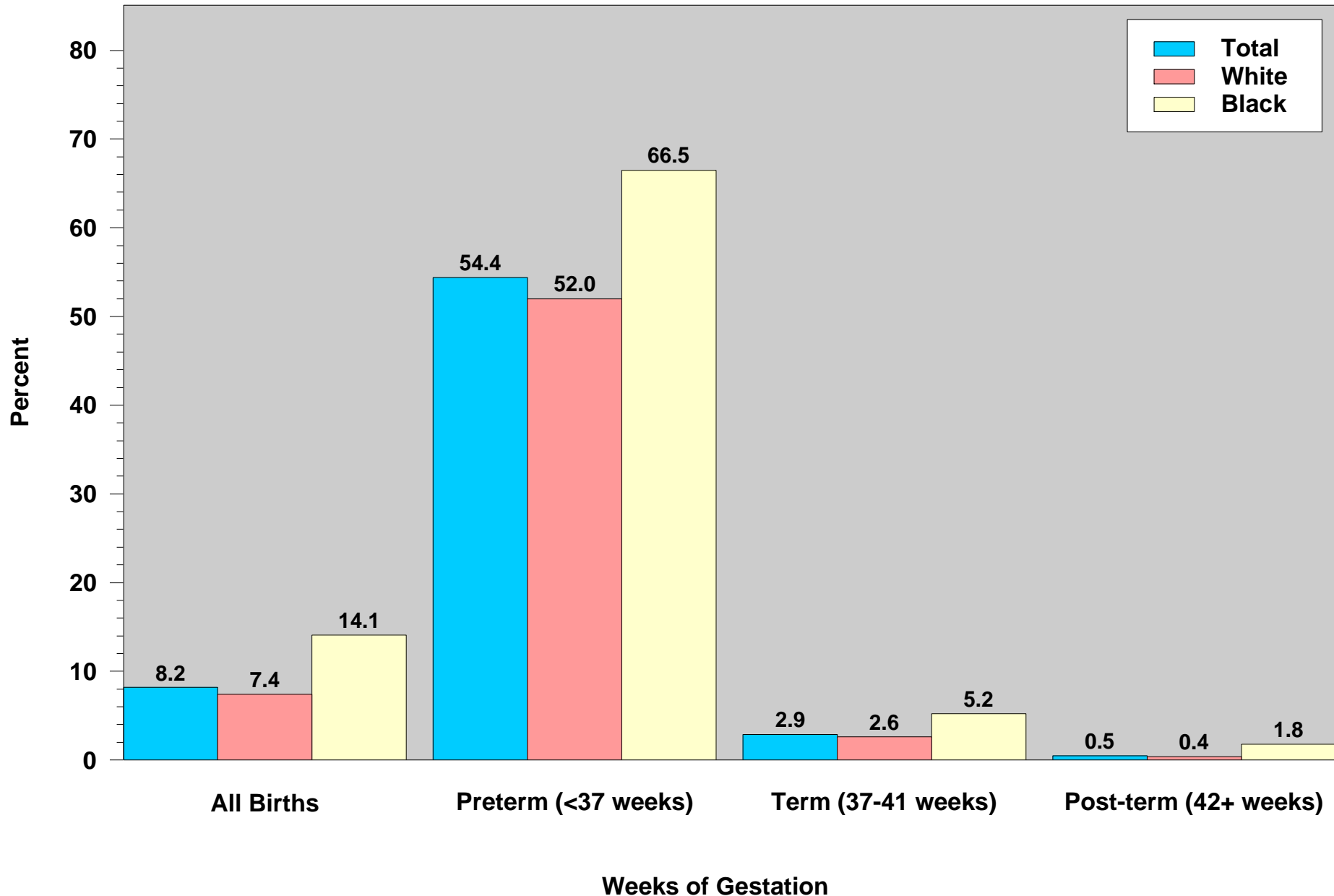
**Percent of Low Birthweight Infants by Age and Race of Mother:
Indiana Residents, 2006**



Indiana Natality Report, 2006

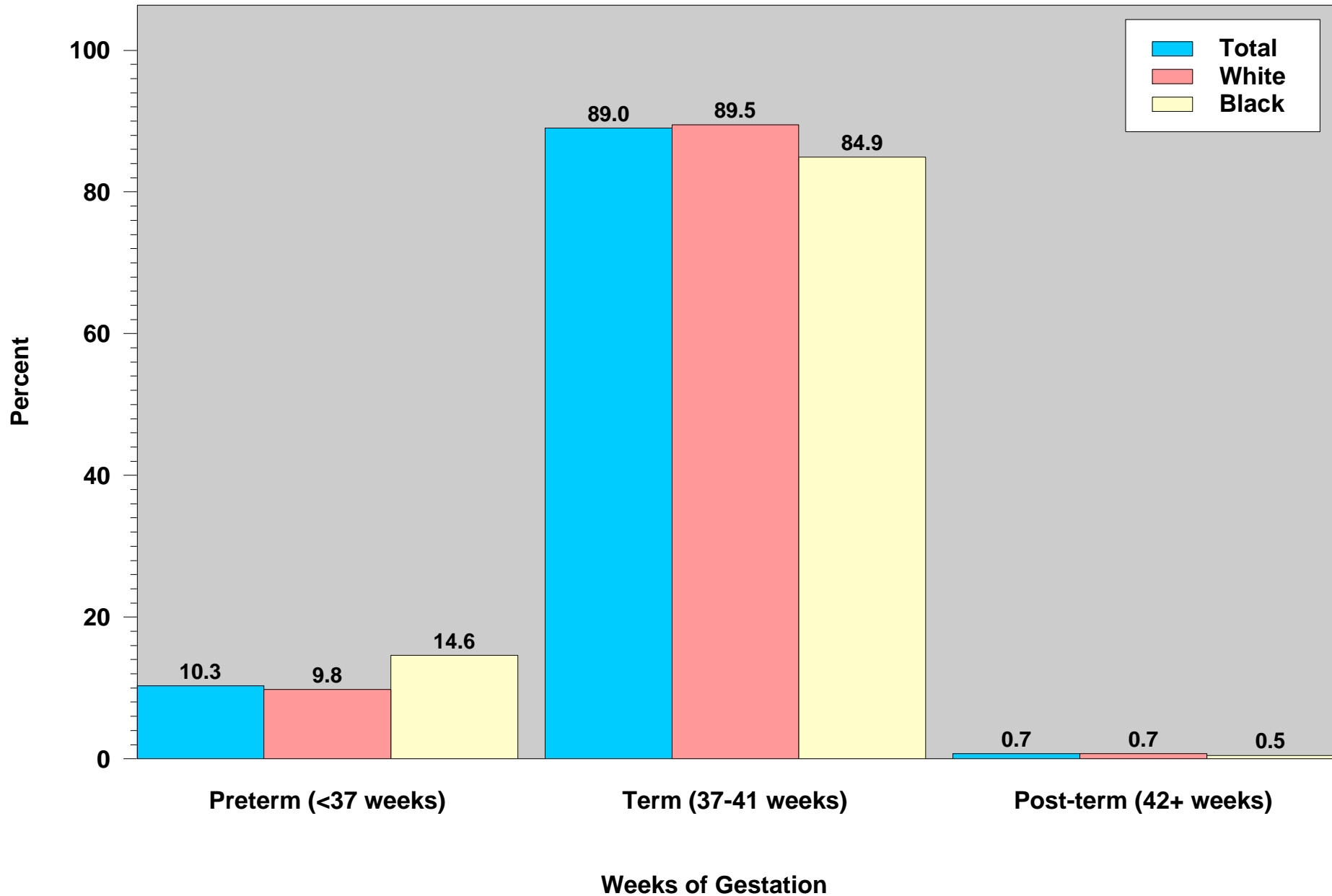
Figure 9

Percent of Low Birthweight Infants by Weeks of Gestation and Race of Mother: Indiana Residents, 2006



This figure was run on July 2, 2008.
Source: ISDH, PHSDD, DAT; Table 18

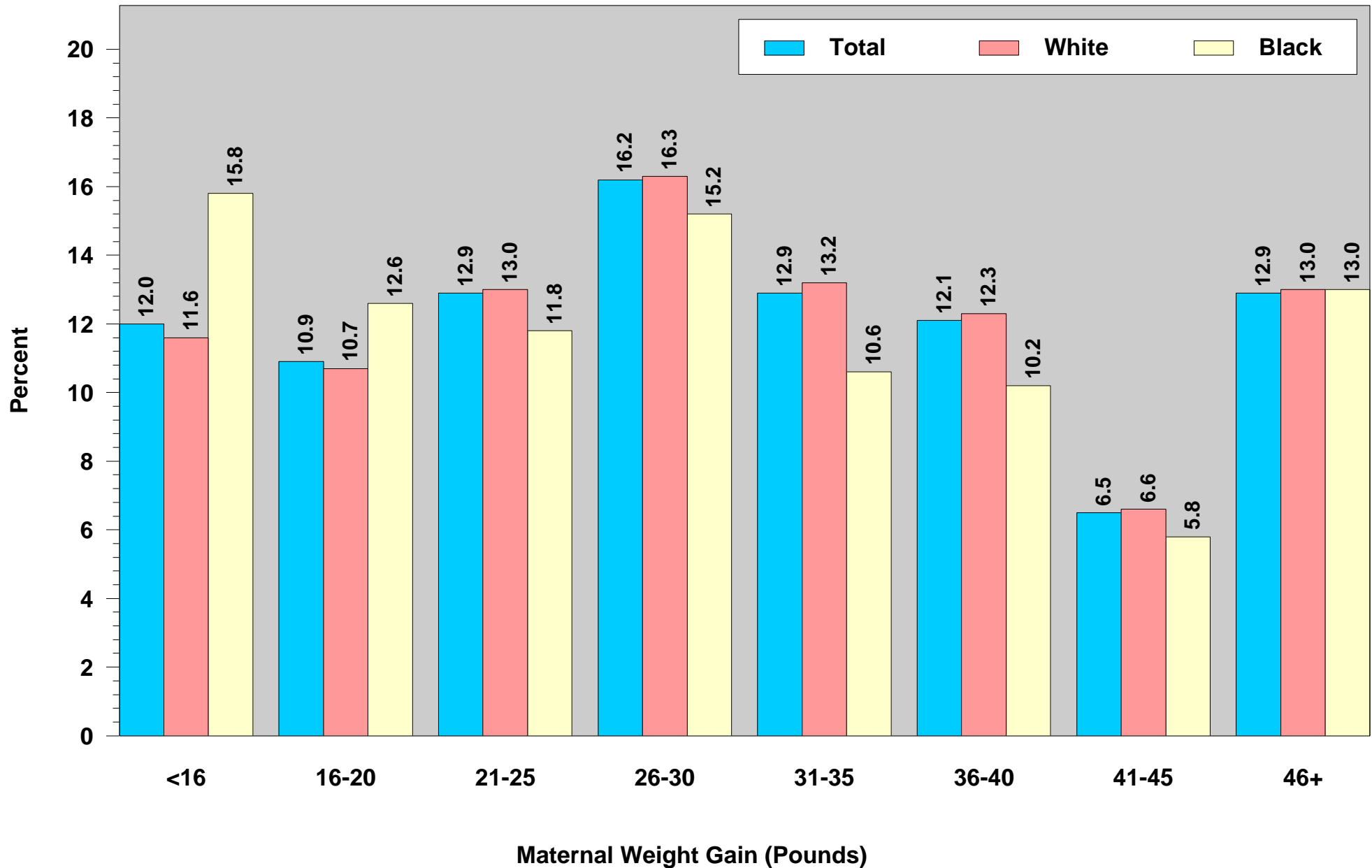
Percent of Live Births by Weeks of Gestation and Race of Mother: Indiana Residents, 2006



Indiana Natality Report, 2006

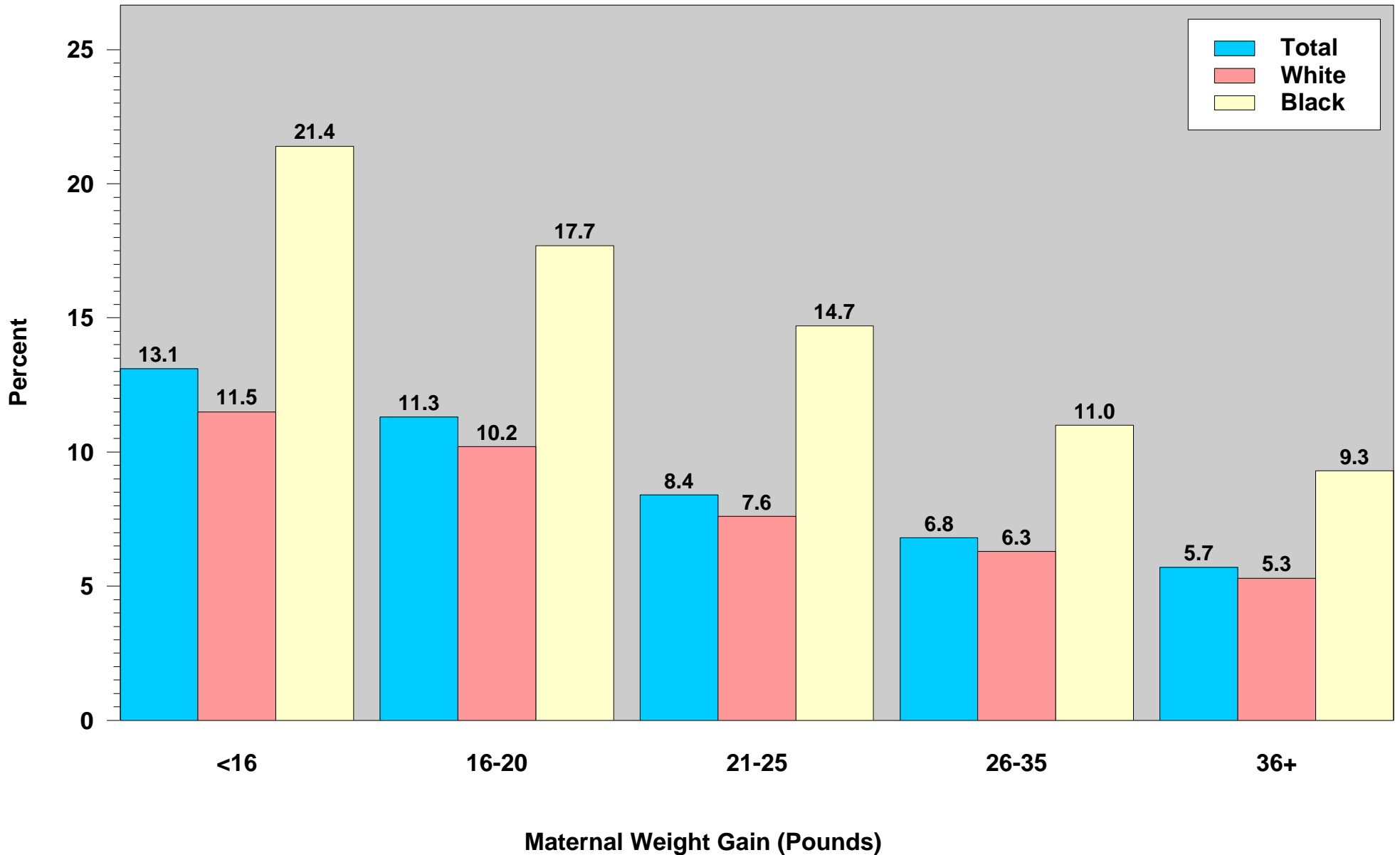
Figure 11

Percent of Live Births by Maternal Weight Gain and Race of Mother: Indiana Residents, 2006



This figure was run on July 2, 2008.
Source: ISDH, PHSD, DAT

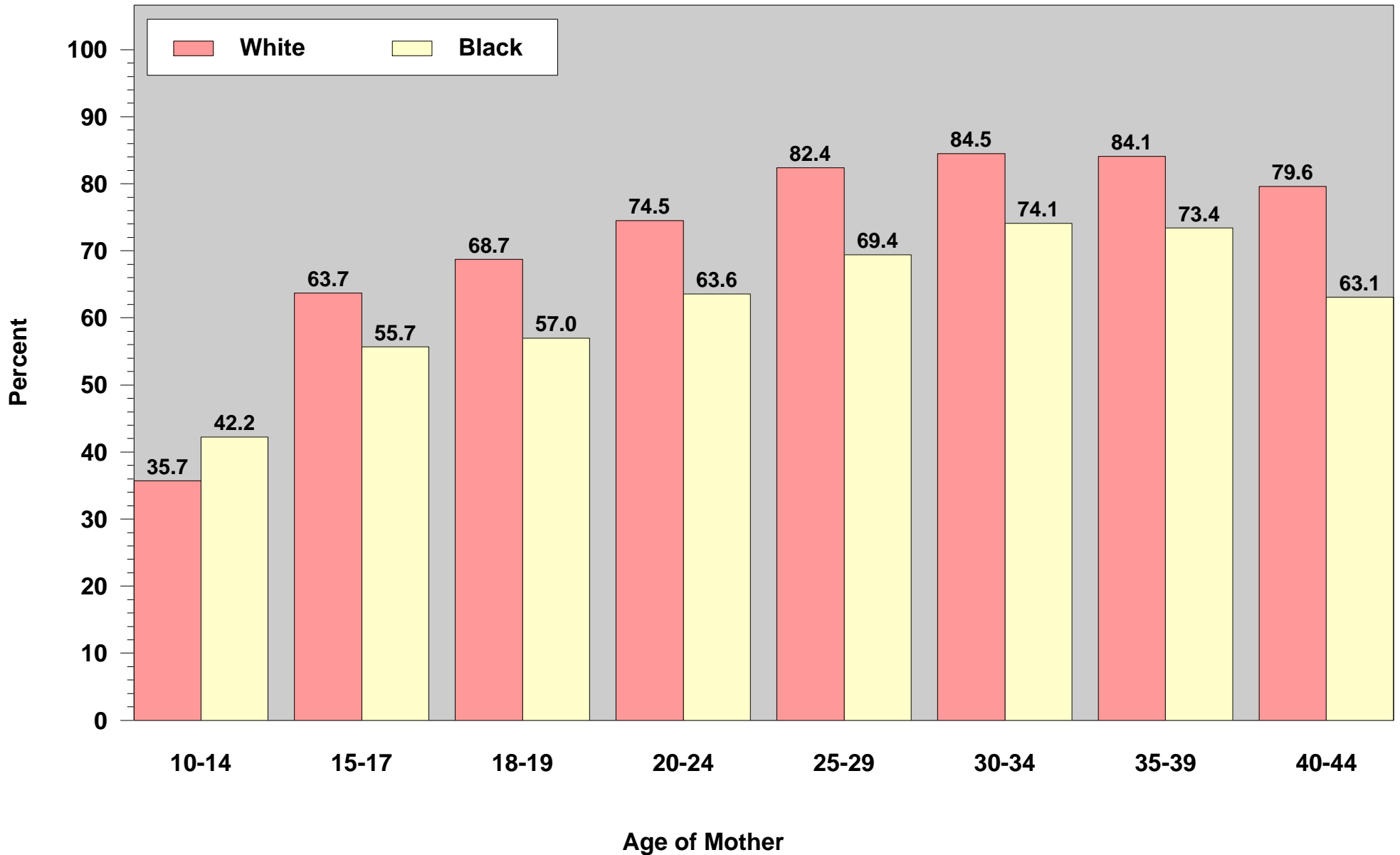
Percent of Low Birthweight Infants by Maternal Weight Gain and Race of Mother: Indiana Residents, 2006



Indiana Natality Report, 2006

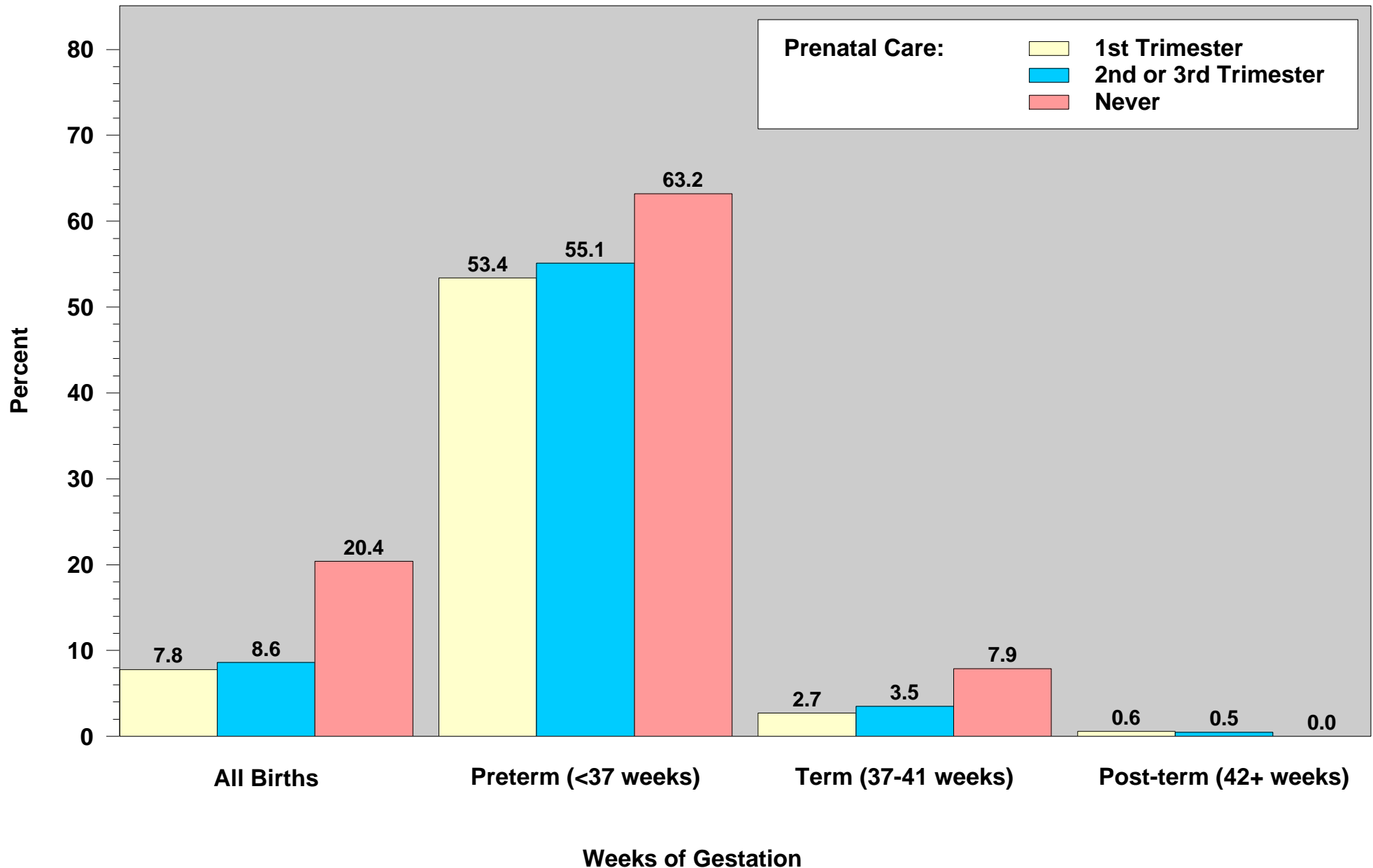
Figure 13

**Percent of Live Births with Prenatal Care in the First Trimester
by Age and Race of Mother:
Indiana Residents, 2006**



This figure was run on July 2, 2008.
Source: ISDH, PHSD, DAT; Table 24

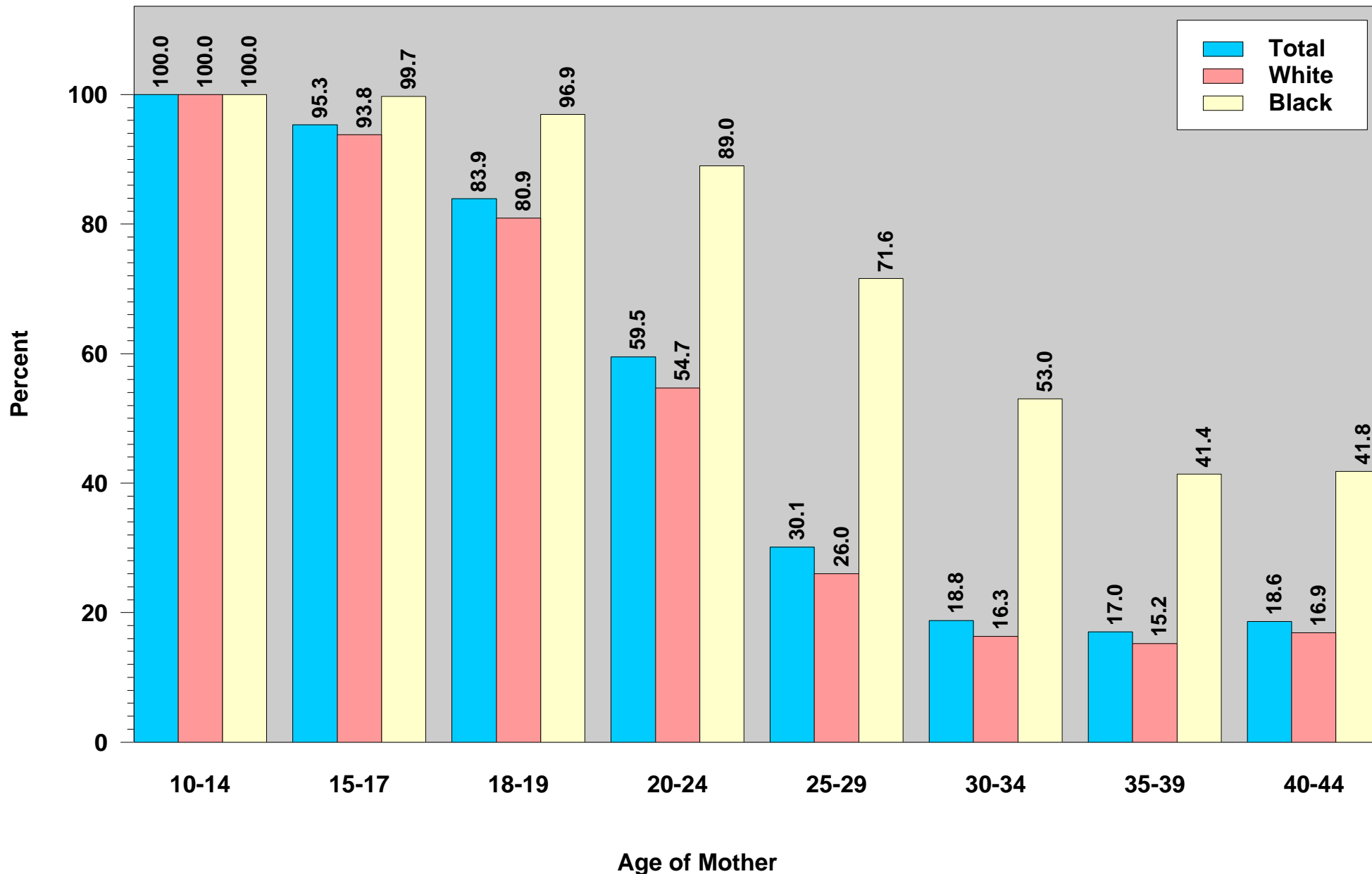
Percent of Low Birthweight Infants by Gestation and Prenatal Care: Indiana Residents, 2006



Indiana Natality Report, 2006

Figure 15

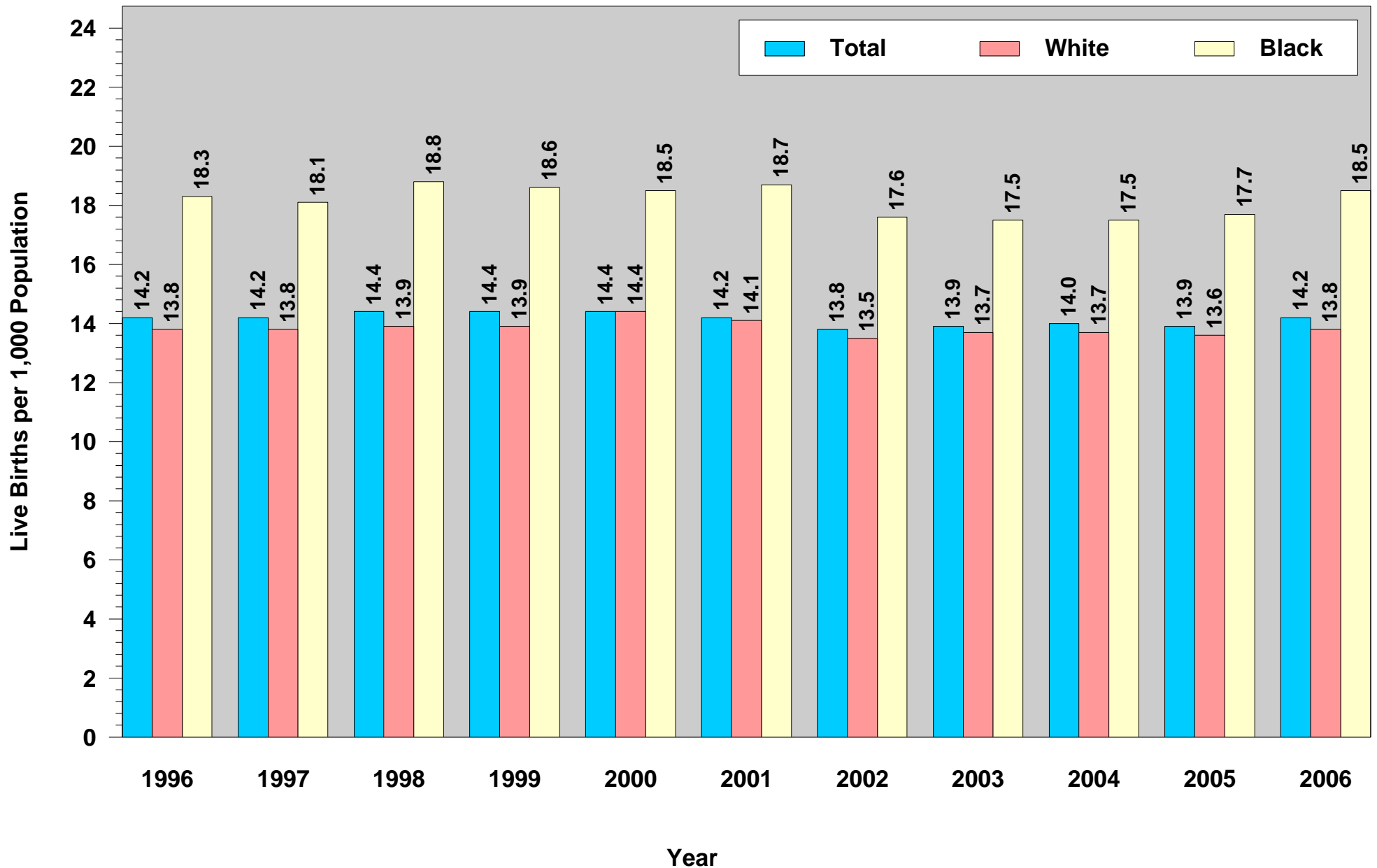
Percent of Live Births to Unmarried Parents by Age and Race of Mother: Indiana Residents, 2006



This figure was run on July 2, 2008.
Source: ISDH, PHSD, DAT; Table 25

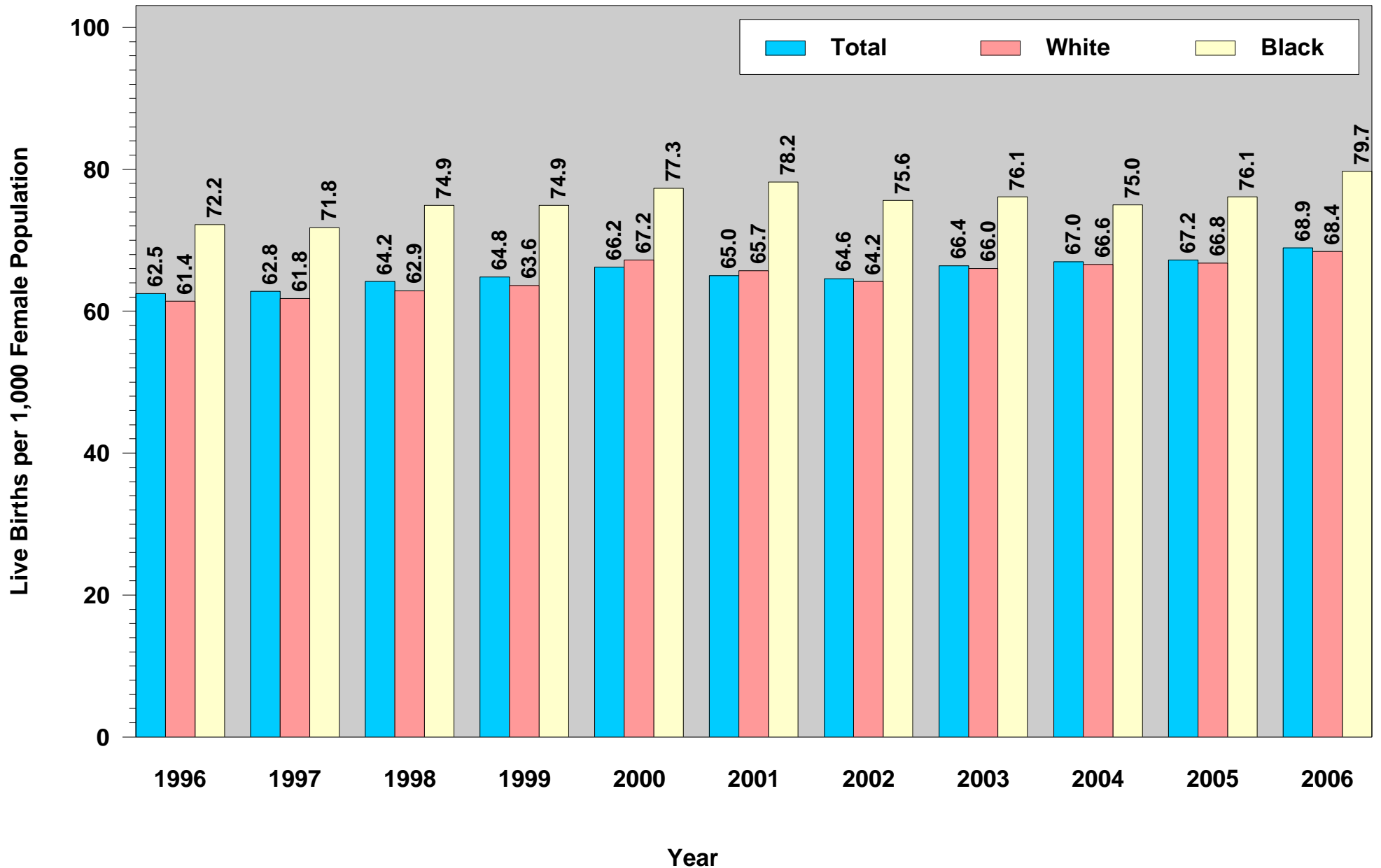
Indiana Natality Report, 2006
Figure 16

**Crude Births Rates by Year and Race of Mother:
Indiana Residents, 1996 to 2006**



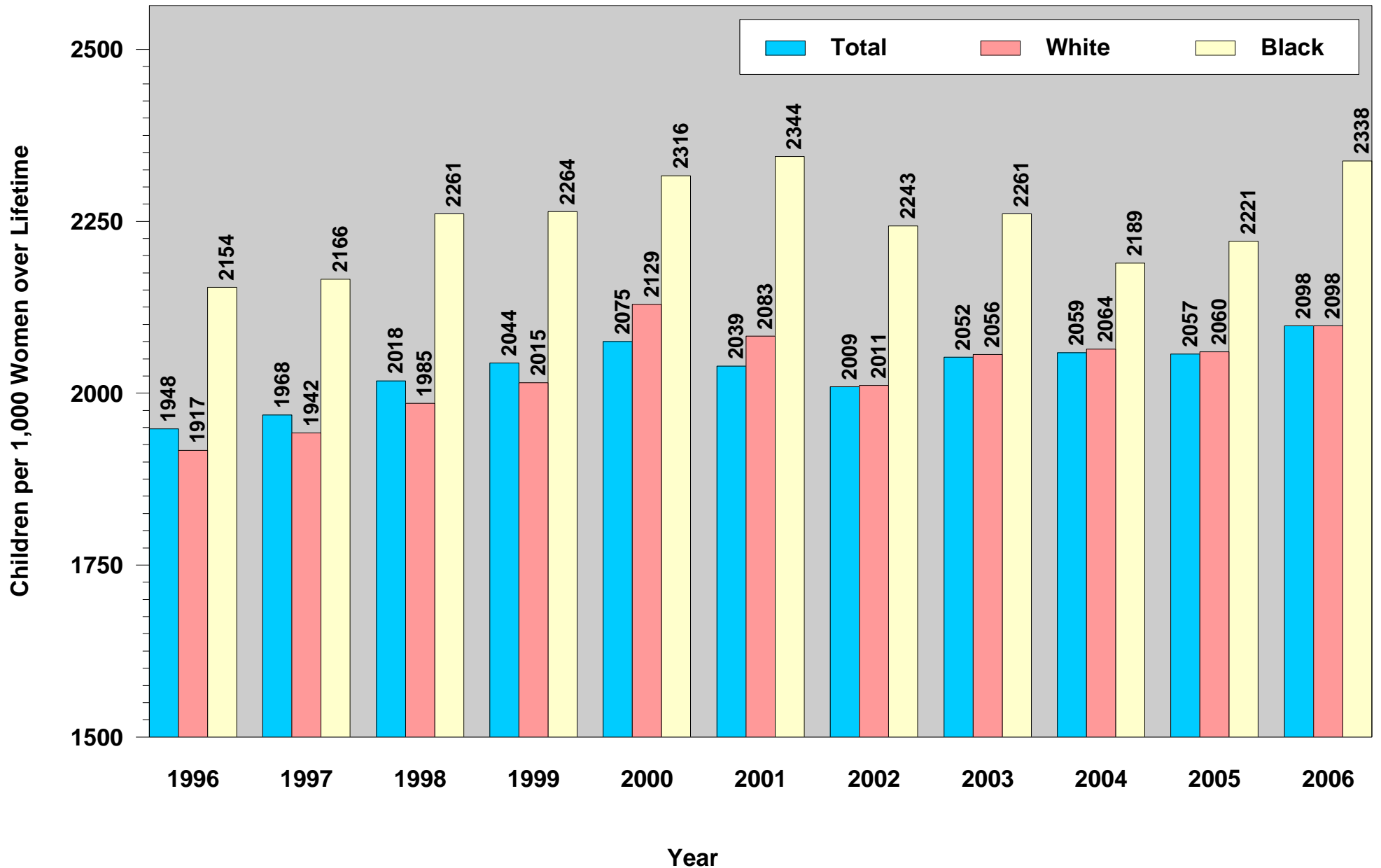
This figure was run on July 2, 2008.
Source: ISDH, PHSD, DAT; Table 28 (2006)

General Fertility Rates by Year and Race of Mother: Indiana Residents, 1996 to 2006



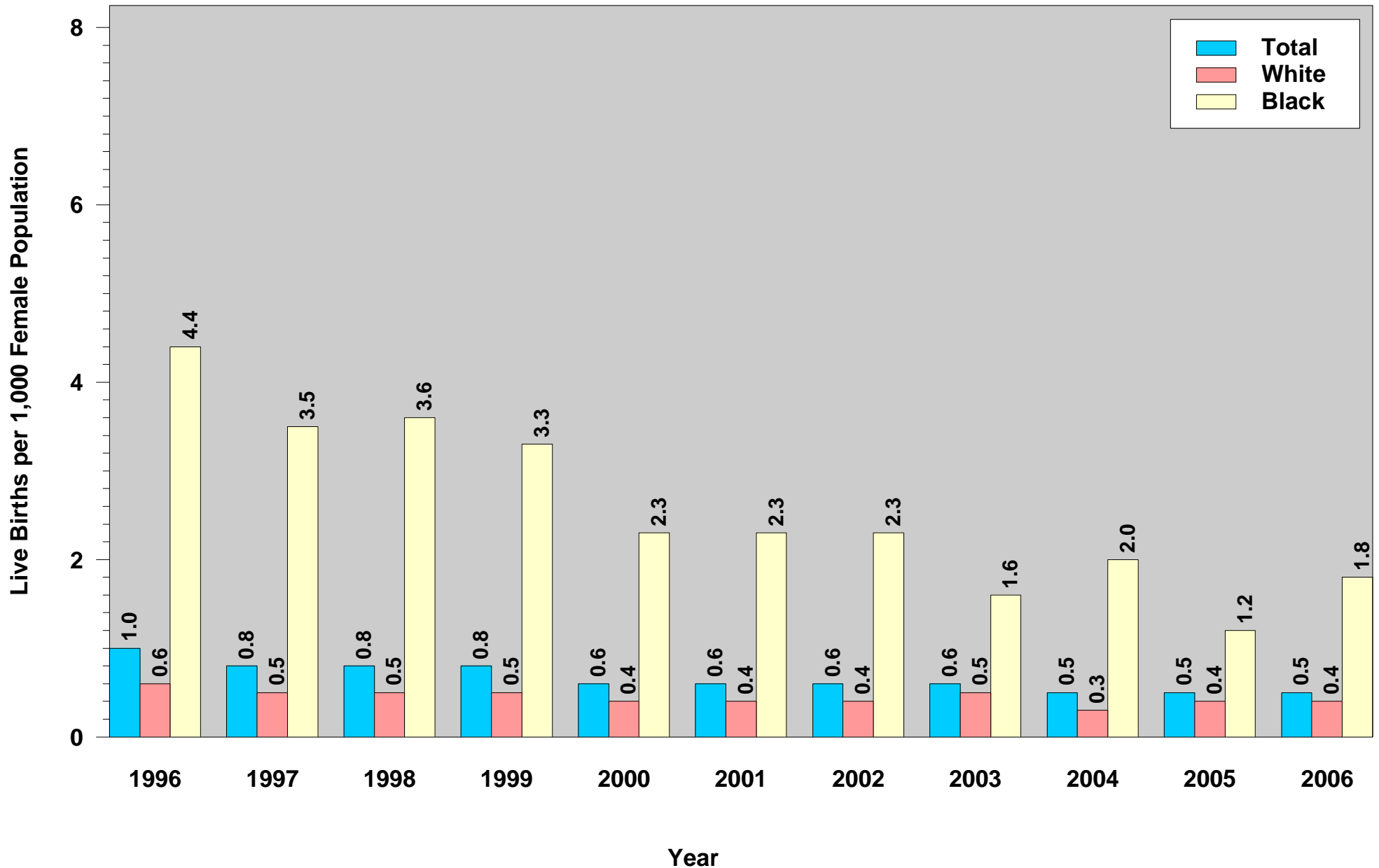
This figure was run on July 2, 2008.
Source: ISDH, PHSD, DAT; Table 13 (2006)

Total Fertility Rates by Year and Race of Mother: Indiana Residents, 1996 to 2006



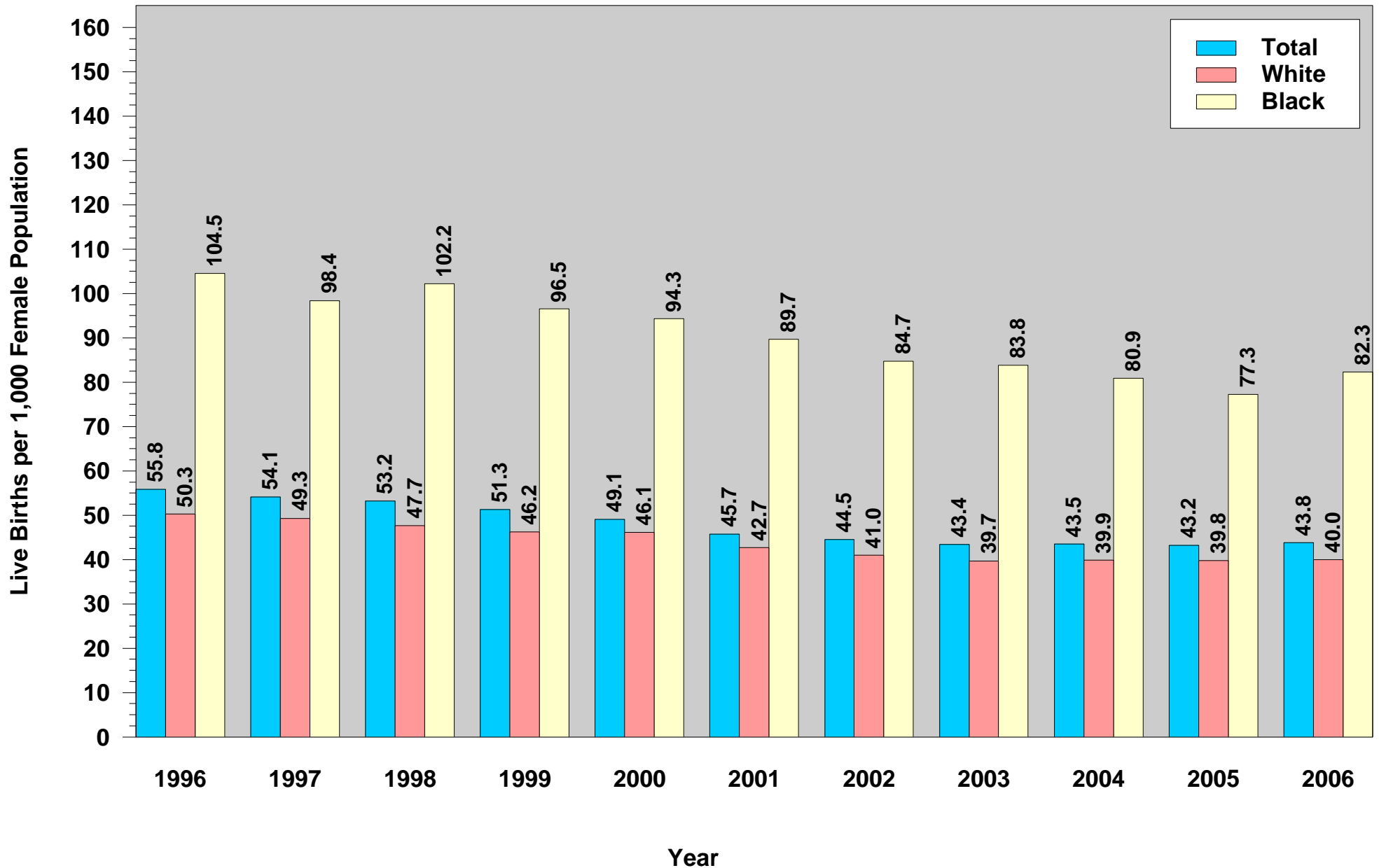
This figure was run on July 2, 2008.
Source: ISDH, PHSD, DAT; Table 13 (2006)

Birth Rates for Ages 10 to 14 by Race of Mother: Indiana Residents, 1996 to 2006



This figure was run on July 2, 2008.
Source: ISDH, PHSD, DAT; Table 13 (2006)

Birth Rates for Ages 15 to 19 by Race of Mother: Indiana Residents, 1996 to 2006

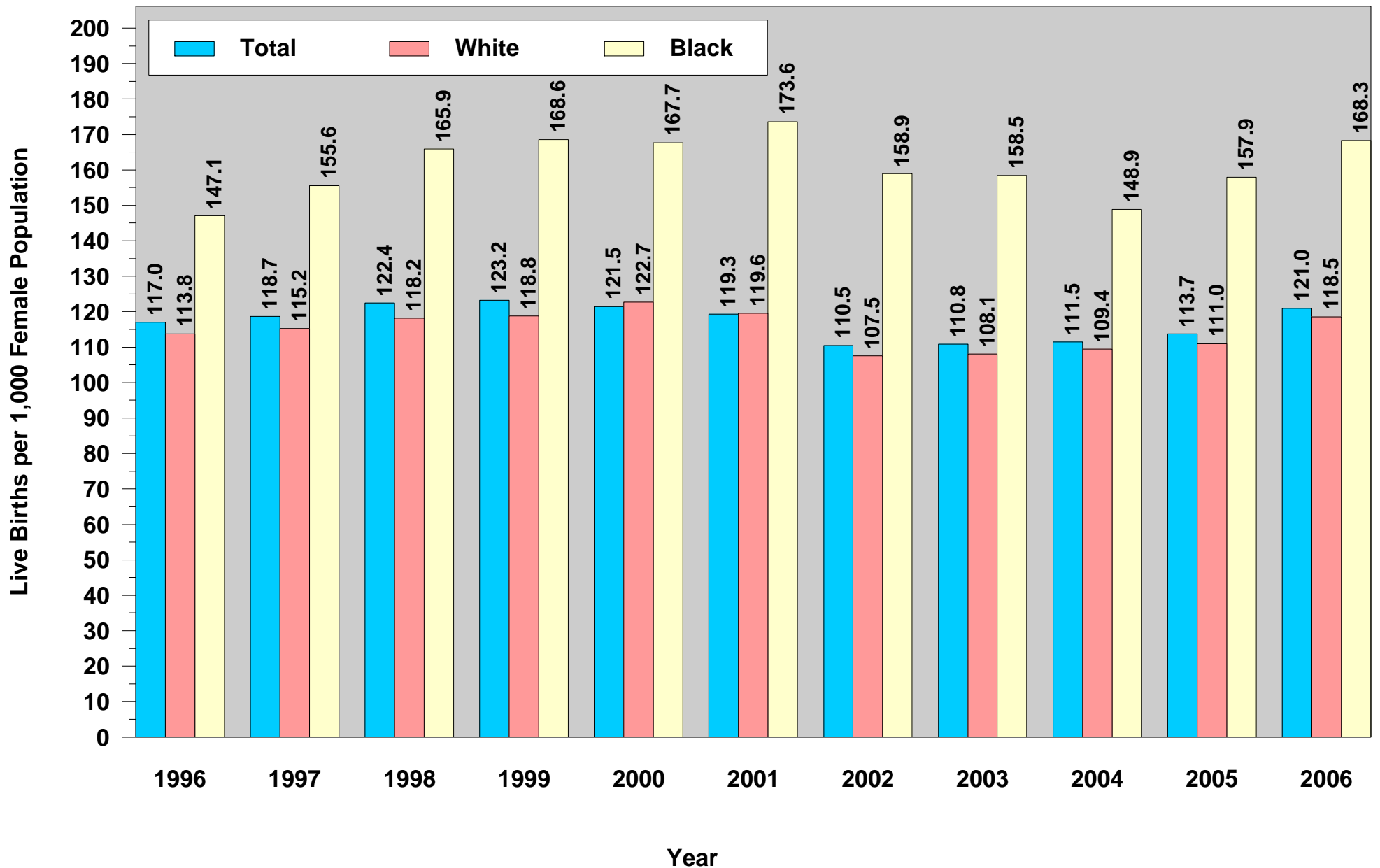


This figure was run on July 2, 2008.
Source: ISDH, PHSD, DAT; Table 13 (2006)

Indiana Natality Report, 2006

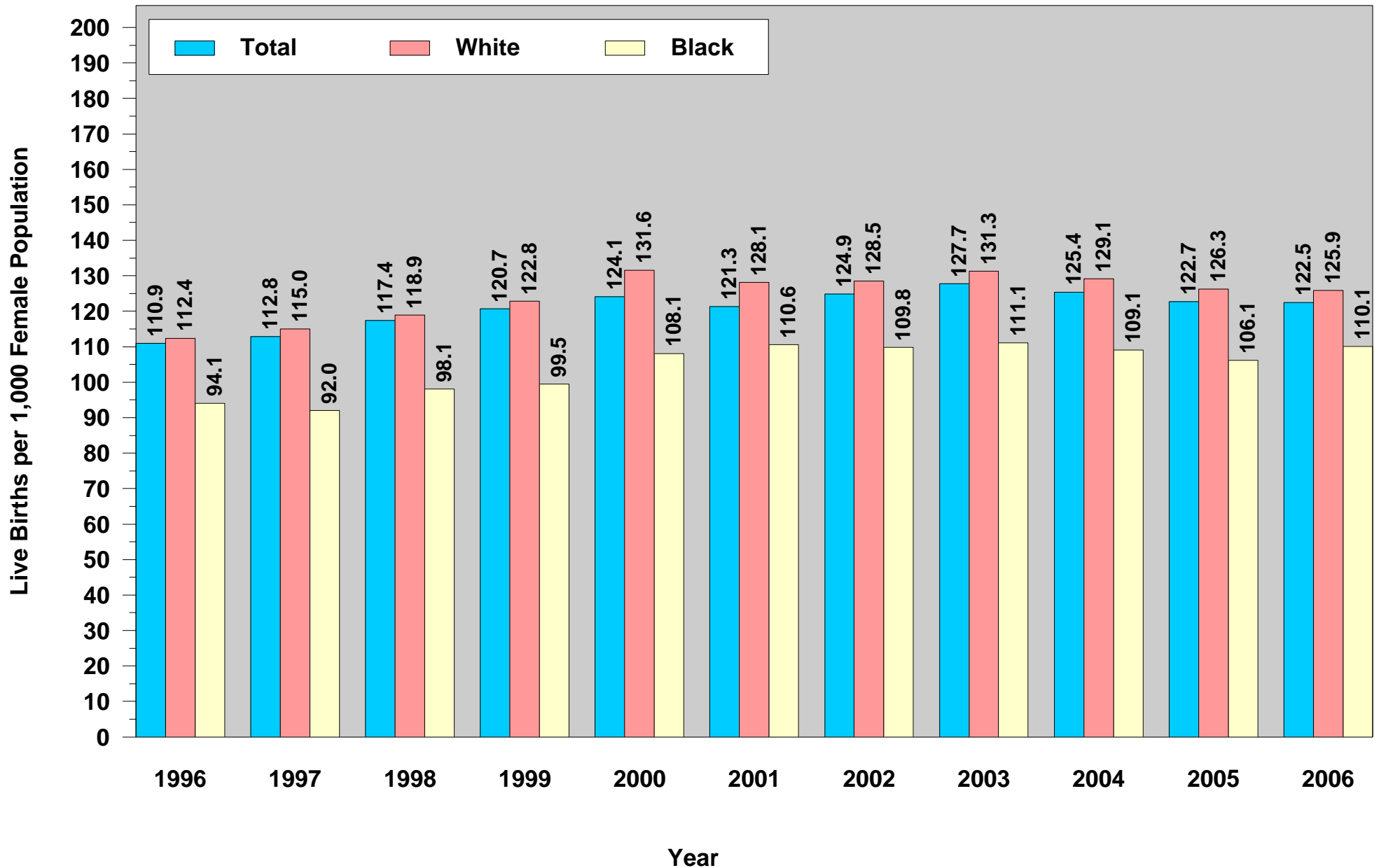
Figure 21

Birth Rates for Ages 20 to 24 by Race of Mother: Indiana Residents, 1996 to 2006



This figure was run on July 2, 2008.
Source: ISDH, PHSD, DAT; Table 13 (2006)

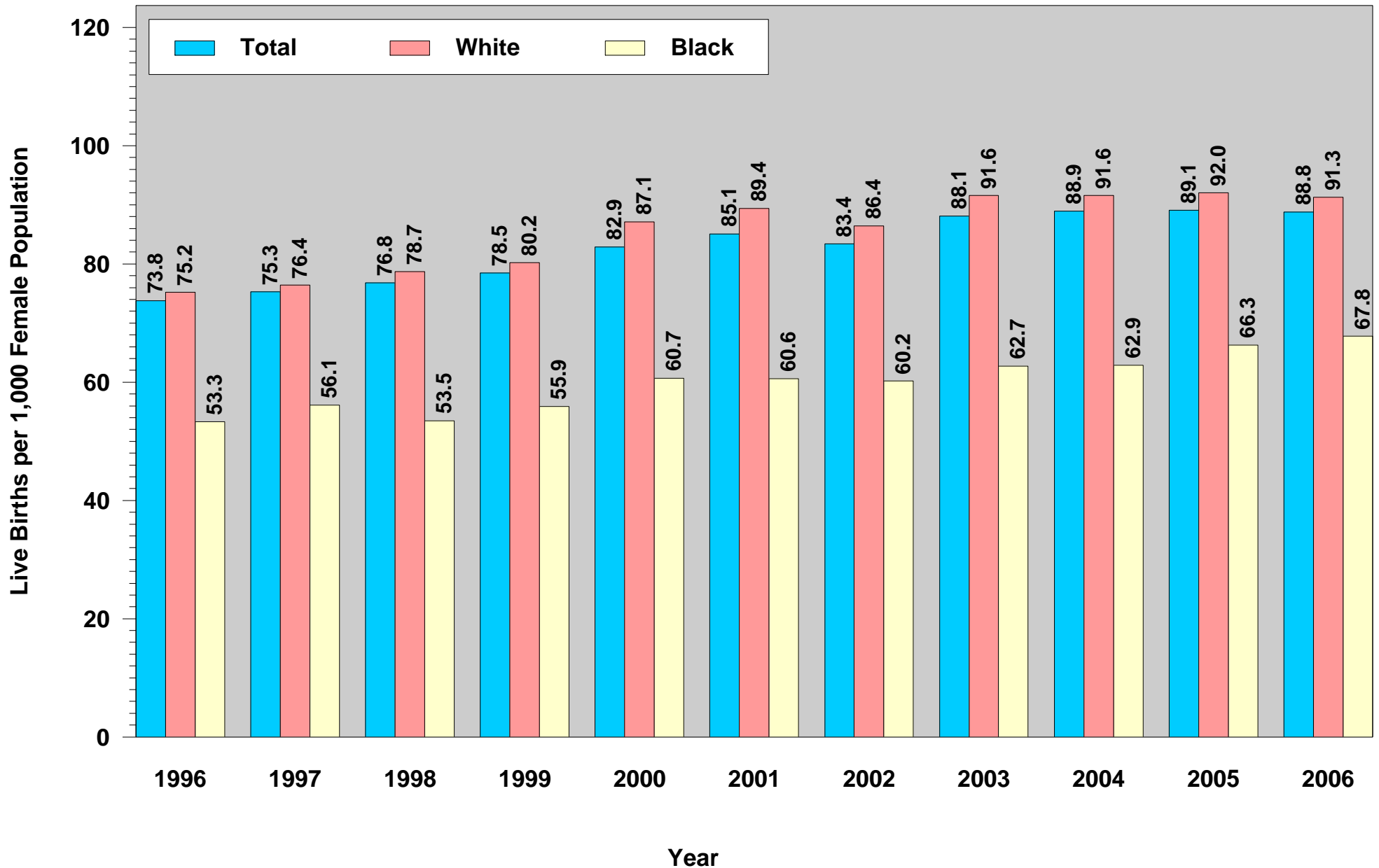
Birth Rates for Ages 25 to 29 by Race of Mother: Indiana Residents, 1996 to 2006



This figure was run on July 2, 2008.
Source: ISDH, PHSD, DAT; Table 13 (2006)

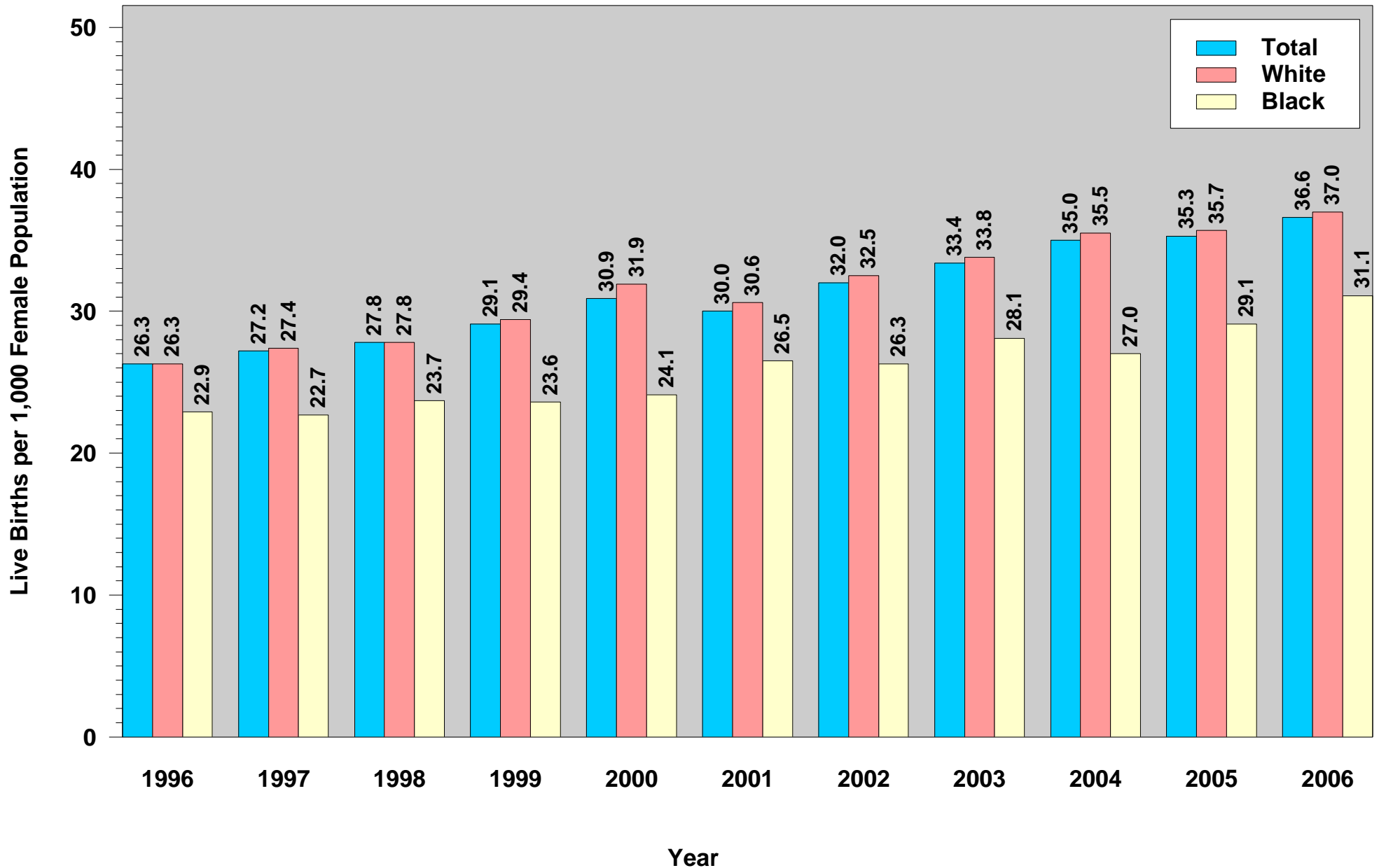
Indiana Natality Report, 2006
Figure 23

**Birth Rates for Ages 30 to 34 by Race of Mother:
Indiana Residents, 1996 to 2006**



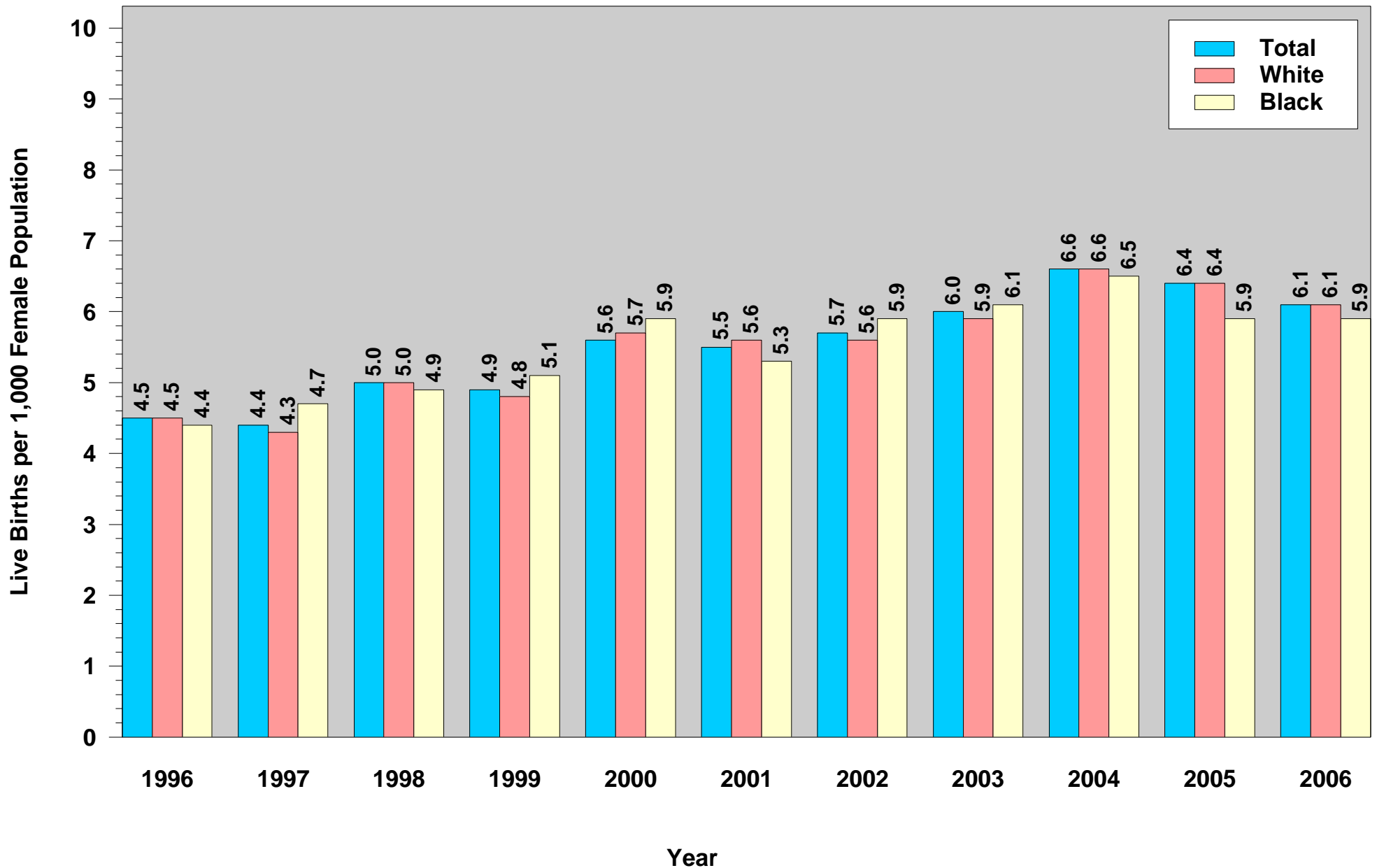
This figure was run on July 2, 2008.
Source: ISDH, PHSD, DAT; Table 13 (2006)

Birth Rates for Ages 35 to 39 by Race of Mother: Indiana Residents, 1996 to 2006



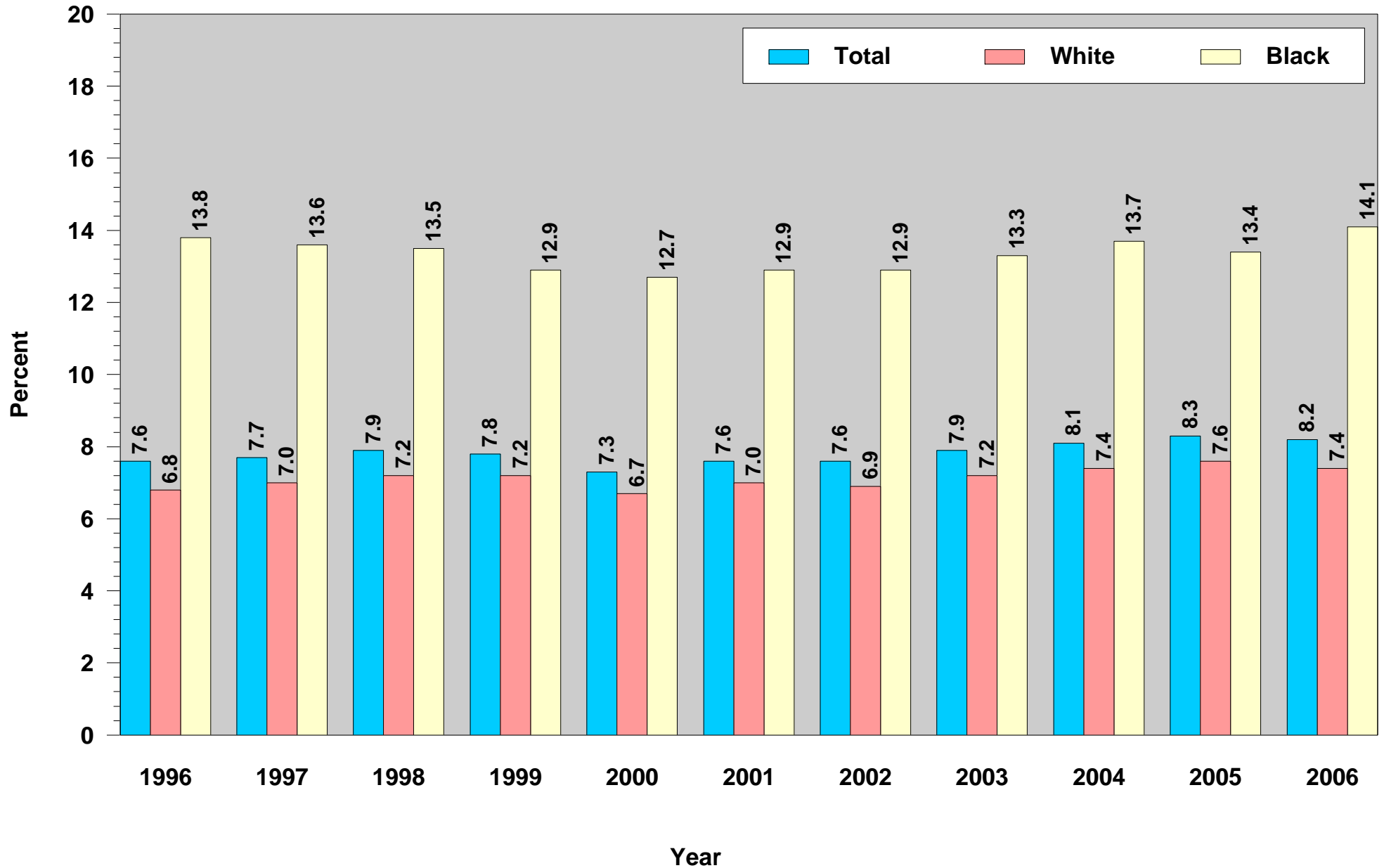
Indiana Natality Report, 2006
Figure 25

**Birth Rates for Ages 40 to 44 by Race of Mother:
Indiana Residents, 1996 to 2006**



This figure was run on July 2, 2008.
Source: ISDH, PHSD, DAT; Table 13 (2006)

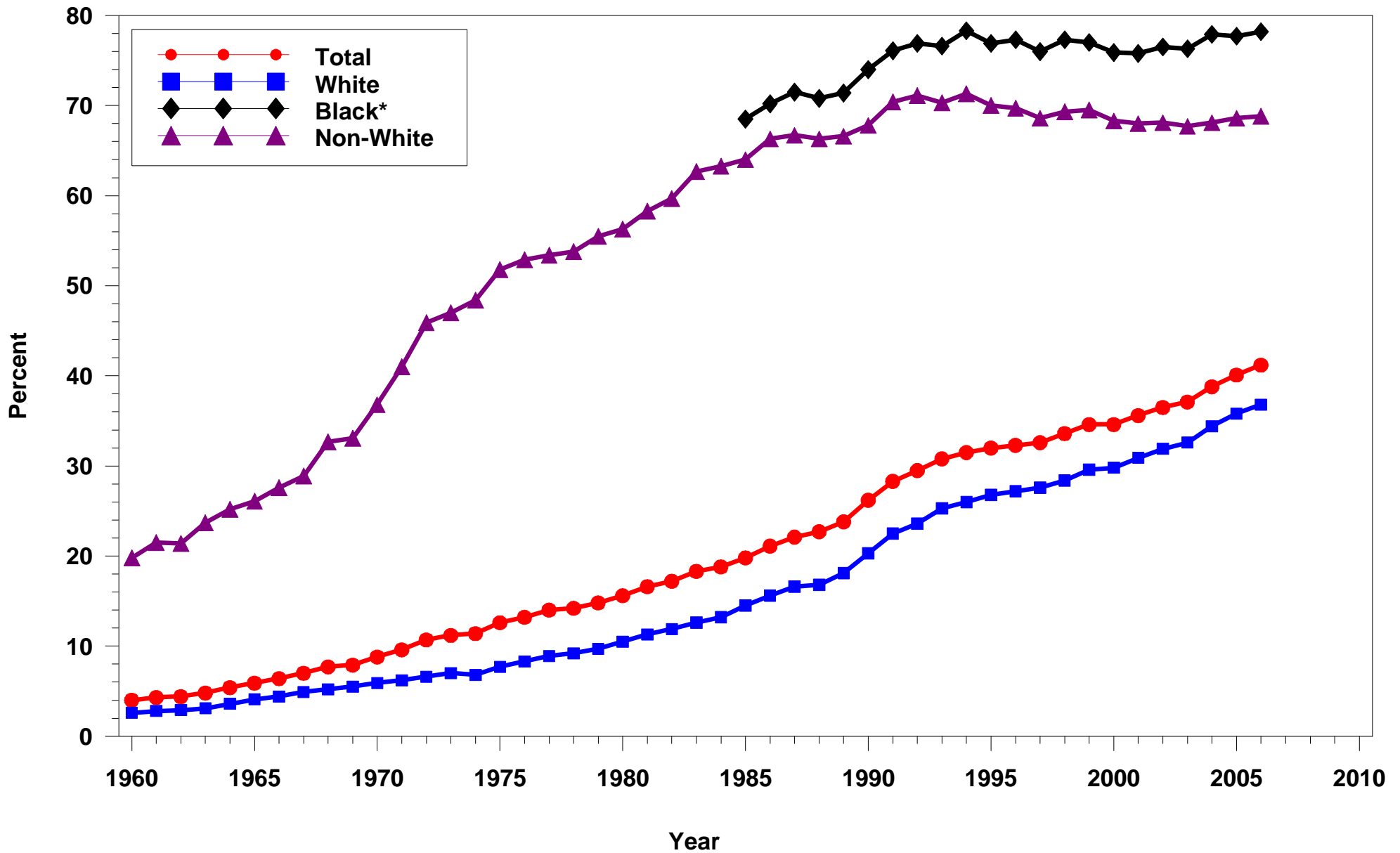
Percent of Low Birthweight Infants by Year and Race of Mother: Indiana Residents, 1996 to 2006



Indiana Natality Report, 2006

Figure 27

Percent of Live Births to Unmarried Parents by Race of Mother: Indiana Residents, 1960-2006



This figure was run on July 2, 2008.

*Information not available prior to 1985. These births were reported as non-white.

Source: ISDH, PHSDD, DAT; Table 25