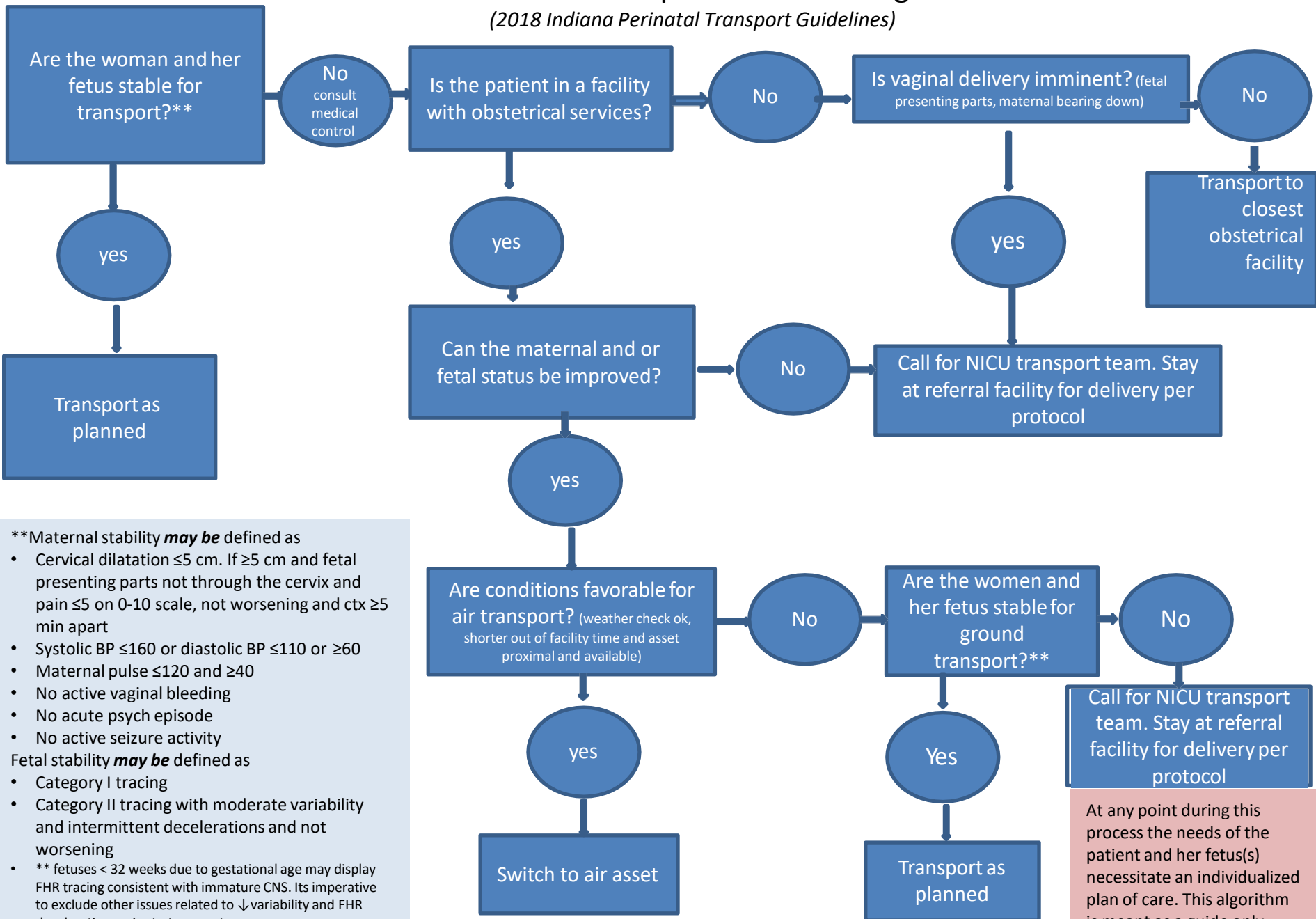


Maternal Fetal Transport Go-No Go Algorithm

(2018 Indiana Perinatal Transport Guidelines)



****Maternal stability *may be* defined as**

- Cervical dilatation ≤ 5 cm. If ≥ 5 cm and fetal presenting parts not through the cervix and pain ≤ 5 on 0-10 scale, not worsening and ctx ≥ 5 min apart
- Systolic BP ≤ 160 or diastolic BP ≤ 110 or ≥ 60
- Maternal pulse ≤ 120 and ≥ 40
- No active vaginal bleeding
- No acute psych episode
- No active seizure activity

Fetal stability *may be* defined as

- Category I tracing
- Category II tracing with moderate variability and intermittent decelerations and not worsening
- ** fetuses < 32 weeks due to gestational age may display FHR tracing consistent with immature CNS. Its imperative to exclude other issues related to \downarrow variability and FHR decelerations prior to transport

At any point during this process the needs of the patient and her fetus(s) necessitate an individualized plan of care. This algorithm is meant as a guide only.