

**Moderna mRNA-1273
COVID-19 Vaccine
Pocket Guide for Providers**




April 2021

MODERNA SHIPMENT

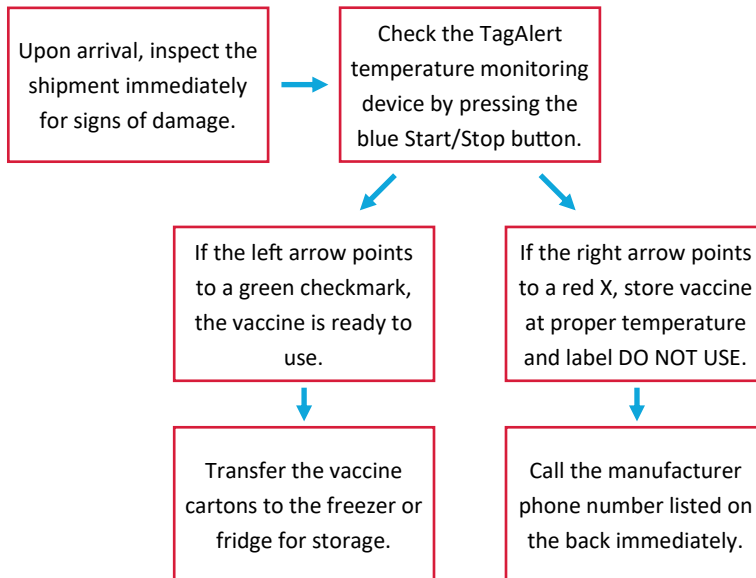
Where do the materials come from?

	Source
Vaccine Frozen Multidose Vials	McKesson
Ancillary Kit For Administering	McKesson

 Sites will need to provide their own temperature monitoring device to monitor storage temperatures.

Upon Arrival of the Vaccine

- Arrives frozen at -25°C to -15°C (-13°F to -5°F).
- 10 vials in each carton (100 doses).
- Contains either 10 dose vials or 15 dose vials.
- Full case contains 12 cartons (1,200 doses).
- Vaccine Carton dimensions are 5.5" x 2.2" x 2.5".

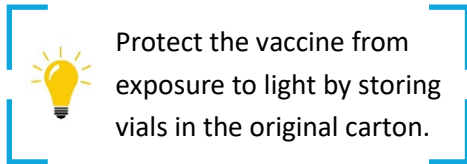


MODERNA SHIPMENT

MODERNA STORAGE & HANDLING

1. Freezer

- Store as frozen liquid at -25°C to -15°C (-13°F to 5°F) for up to 6 months.
- Do not store on dry ice or below -40°C (-40°F).



2. Refrigerator

- Store vials at 2°C to 8°C (36°F to 46°F) up to 30 days.
 - Do not refreeze thawed vials.
 - Store punctured vials at 2°C to 25°C (36°F to 77°F) for a maximum of 12 hours.
 - Discard any punctured vials after 12 hours. Dispose of any vials with unused vaccine as medical waste.
-



3. Room Temperature

- Store at room temperature 8°C to 25°C (46°F to 77°F) for up to 24 hours.
- Do not refreeze thawed vials.

Temperature Monitoring Guidelines

Option 1: Check and record the min/max temperatures of the storage units each day using a temperature monitoring device.

Option 2: If your temperature monitoring device does not automatically record min/max temperatures, record the temperature at the start and end of each workday.

MODERNA STORAGE & HANDLING



MODERNA VACCINE PREPARATION

Remove the number of vials needed as quickly as possible and return carton to frozen or fridge storage.

There are **two options** for thawing vials:

Option 1

1. Transfer frozen vials to refrigerator and thaw 2.5 to 3 hours at 2°C to 8°C (36°F to 46°F), then thaw for an additional 15 minutes at room temperature.
2. Vials may be stored in refrigerator for up to 30 days at 2°C to 8°C (36°F to 46°F).

Option 2

1. Thaw at room temperature 8°C to 25°C (46°F to 77°F) for 1 to 1.5 hours if using immediately.
2. Vials may be held at room temperature for no more than 24 hours.



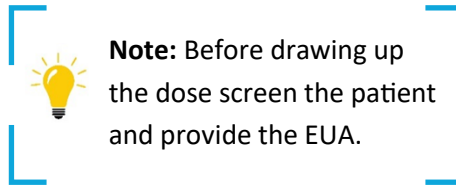
Note: 15 dose vials will take longer to thaw while 10/11 dose vials will take less time.

Prepare the following supplies **per one 10-Dose Vial Moderna COVID-19 Vaccine** (100mcg/0.5mL dose):

- 10 dosing syringes/needles (1mL syringe/ IM injection needle)
- Alcohol swabs and appropriate PPE as needed

Prepare the following supplies **per one 15-Dose Vial Moderna COVID-19 Vaccine** (100mcg/0.5mL dose):

- 15 dosing syringes/needles (1mL syringe/ IM injection needle)
- Alcohol swabs and appropriate PPE as needed



MODERNA VACCINE PREPARATION

MODERNA VACCINE ADMINISTRATION

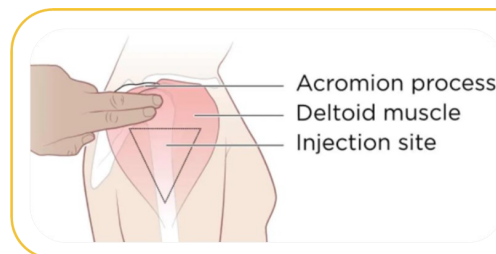
Before Administration

- Visually inspect each dose in the dosing syringe prior to administration. The vaccine will be an off-white suspension, it may contain white or translucent particles. Do not administer if the vaccine is discolored.
- Verify the final dosing volume of 0.5mL.
- Swirl the vaccine vial gently between doses. Do not shake.

Image source: Intramuscular Injection Sites. Healthline. Medically reviewed by Deborah Weatherspoon, Ph.D., R.N., CRNA. Written by Jacquelyn Cafasso. Updated on March 7, 2019. Retrieved from <https://www.healthline.com/health/intramuscular-injection>

During Administration

- Administer a single 100 mcg/0.5mL dose at first visit.
- Use appropriate gauge needle for body type (23-25 gauge).
- Administer intramuscularly in the deltoid muscle.



After Administration

- Discard all used materials in appropriate medical waste receptacles/sharps containers.
- Provide COVID-19 vaccine record card to patient noting the date and time for second dose.
- Monitor patient for 15 minutes and report any adverse reaction on VAERS.
- Give the second 100mcg/0.5mL dose 28 days after the first dose.



The second dose must be Moderna COVID-19 Vaccine; it is not interchangeable with other COVID-19 vaccines.

MODERNA VACCINE ADMINISTRATION

Vaccinator Training:

LMS:Invest at <https://chirp.in.gov> or www.in.gov/isdh/17094.htm

Vaccinator Questions:

<https://eportal.isdh.in.gov/C19VaxHelpDeskCustomer>

Manufacturer Questions:

Contact Moderna at 1-866-663-3762

Moderna COVID-19 Vaccine Website:

<https://www.modernatx.com/covid19vaccine-eua/>



Indiana
Department
of
Health

April 2021