

Pharmacy Overview

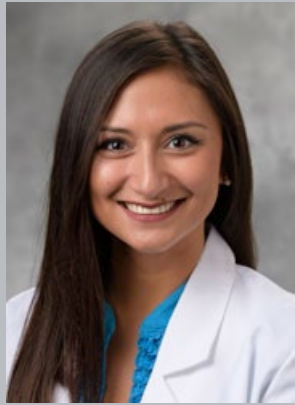
Trexie Rudd, PharmD

Director, Purdue University Pharmacy



Meet the Team

Trexie Rudd, PharmD



Director

Abbey Fritsch, PharmD



Clinical
Pharmacist

Katie Koch, PharmD



Clinical
Pharmacist

Cierra Smith, PharmD



Clinical
Pharmacist

Cherie Burris, CPhT



Pharmacy
Technician

Pharmacy Information

Location:

Purdue University
575 Stadium Mall Drive
West Lafayette, IN

Normal Hours:

Monday – Friday
8:30 am – 5:30 pm

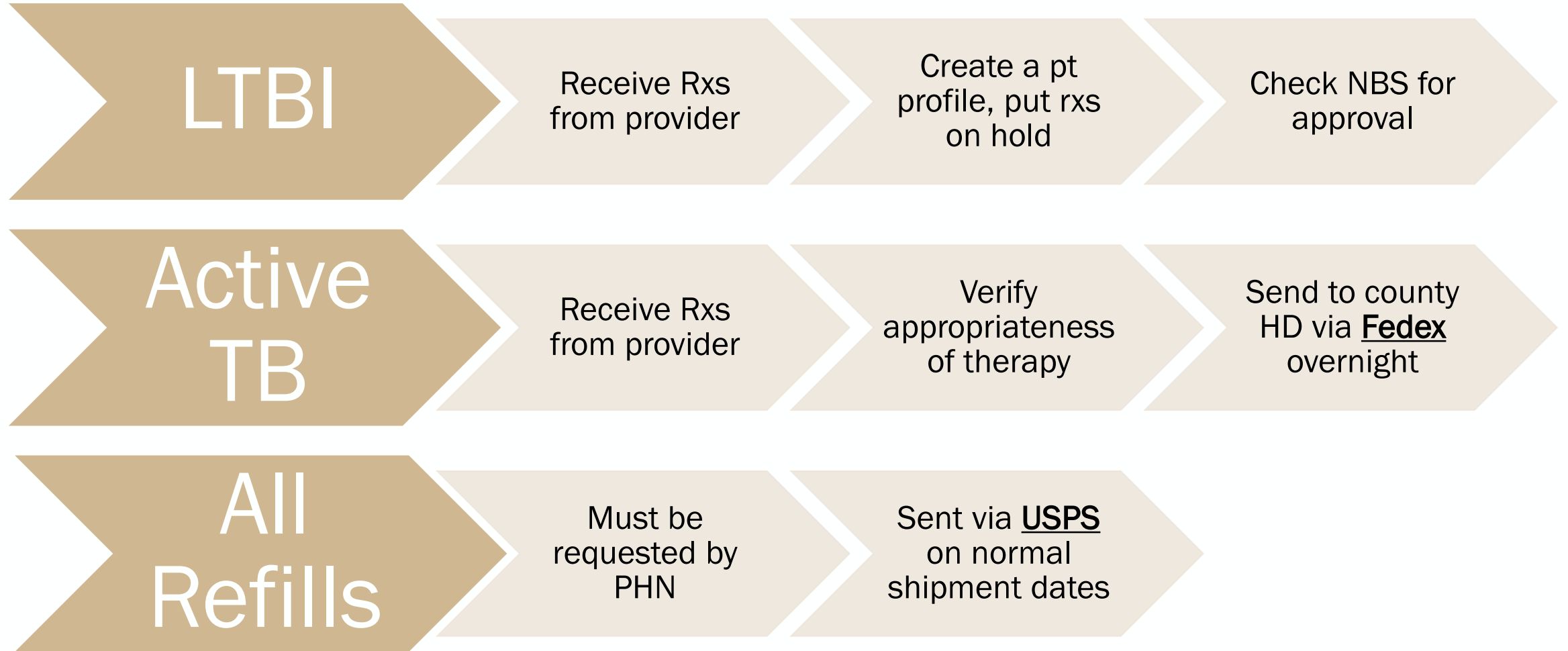
Break Hours:

Monday – Friday
8:30 am – 12:30 pm, 1 – 4:30 pm

Holidays: CLOSED

- Serve as dispensing pharmacy for TB meds for all 92 Indiana counties
 - 19,448 TB rxs in 2025
 - 31,798 non-TB rxs in 2025
- Fully functioning teaching pharmacy
 - 150+ students/year
- Other Clinical Services:
 - Immunizations
 - 3,996 administered in 2025
 - Birth Control Consultations
 - Travel Health Medicine
 - Smoking/Vaping Cessation
 - Injectable Medication Administration

Pharmacy Process for TB Rx's



Refill Requests & Shipping Schedule

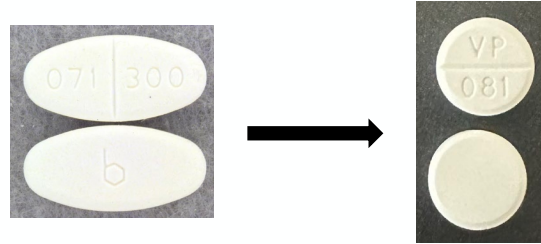
SHIPPING DAY	REQUEST DEADLINE	HOW TO SUBMIT REQUESTS
Tuesday	Monday at noon	Fax: 800-848-9582 Phone: 765-494-1374 (Option 5)
Thursday	Wednesday at noon	

Additional Doses Needed

- Rx from provider must have sufficient refills remaining
- Notify Pharmacy team member of the request via phone, or
- Indicate # of additional doses needed in “comments” column of fax form

Commonly Used Medications

Isoniazid Highlights



- New manufacturer
- Use with caution in patients with renal or severe renal impairment
- Best absorbed on an empty stomach
 - 1 hour before or 2 hours after meals or antacids
- Common side effects:
 - Stomach pain, diarrhea
- Notify provider if pt reports:
 - Fever, loss of appetite, darkened urine, pain/swelling of joints

Commonly Used Medications

Rifampin Highlights

- Avoid in patients with impaired liver function
- Discoloration of bodily fluids
- Best absorbed on an empty stomach
 - 1 hour before or 2 hours after meals or antacids
- Significant drug interactions:
 - Hormonal birth control
 - HIV Tx
 - Many others!
- Common side effects: heartburn, diarrhea, headache
- Notify provider if pt reports:
 - Fever, loss of appetite, malaise, N/V, darkened urine, yellowish discoloration of skin/eyes, pain/swelling of joints

Commonly Used Medications

Rifapentine Highlights

- Discoloration of bodily fluids
- Take with food
- Wait at least 72 hours between doses
- Drug interactions:
 - Hormonal birth control
 - HIV Tx
 - Many others!
- Common side effects: joint pain, headache, increased sweating
- Notify provider if pt reports:
 - loss of appetite, N/V, darkened urine, yellowish discoloration of skin/eyes, unusual bleeding, bruising, or weakness, blistering red skin rash

Commonly Used Medications

Pyrazinamide Highlights

- Can cause false positive urine ketone tests
- May interfere with BCG live treatment or vaccine
- Common side effects: N/V, tiredness or loss of appetite
- Notify provider if pt reports:
 - Joint pain, yellowish discoloration of skin/eyes, fever/chills, dark urine

Commonly Used Medications

Ethambutol Highlights

- Avoid aluminum hydroxide-containing antacids within 4 hours after EMB administration
- Monitor vision: baseline & periodically
 - Monthly if dosed >15mg/kg/day
- Common side effects: N/V, upset stomach, headache, dizziness, poor appetite
- Notify provider if pt reports:
 - Vision changes (including color blindness), eye pain, joint pain, fever/chills, skin rash

Commonly Used Medications

Pyridoxine (vitamin B6) Highlights

- Used in isoniazid-containing therapies to avoid peripheral neuropathy
- Consider use in these populations:
 - Diabetes
 - Pregnancy/Breastfeeding
 - HIV infection
 - Substance use disorder
 - Malnutrition
- 25-50 mg daily for supplementation, may increase to 100 mg daily if needed

BPaL Procurement

Bedaquiline (B), Pretomanid (Pa), and Linezolid (L)

- Reserve use for XDR-TB or MDR-TB
- Requests for this treatment should be communicated to RNC & IDOH TB program manager for coordination
- Linezolid is stocked at the Purdue University Pharmacy
- Pretomanid is a special-order medication; may take 2-3 business days
- Bedaquiline must be arranged through RNC & IDOH

Drug Shortages

Presentation	Date of Update	Availability Information	Related Information	Reason for Shortage	Status	Initial Posting Date
Rifampin 150 mg, 300 mg	3/2/2026	Limited Availability	On allocation	Shortage of an active ingredient	Current	12/22/2021
Priftin 150 mg	9/17/2025	Available			Current	3/25/2020

- Information can be found on FDA website
- Pharmacy will notify IDOH TB program manager & RNCs of shortages

Pharmacy Tips

Advise providers to send prescriptions with patient weight, allergies, and med list.

Specify that patients should NOT come to the pharmacy for pick up.

Fax refill requests to our cloud fax:
800-848-9582

Order refills early when possible.

Call pharmacy's main line (765-494-1374), option 5

Thank You

