

Indiana Hepatitis A Outbreak Summary*

As of February 7, 2019**

Epidemiological Summary for Hepatitis A Cases in Indiana	
Demographic Information	Number of Cases Reporting Demographic (n=989)
Total # of Cases (By Onset)	989
Illness onset range:	12/1/2017 – 1/24/2019
Female, n (%)	410 (41.5%)
Hospitalized, n (%)	499 (50.5%)
Deaths, n (%)	2 (0.2%)
Min Age (years)	10
Max Age (years)	90
Median Age (years)	36

Risk Factor Information	Number of Cases Reporting Risk Factor (n=989)
Any Illicit Drug Use, n (%)	518 (52.4%)
Any Homelessness, n (%)	89 (9.0%)
Illicit Drug Use and Homelessness, n (%)	77 (7.8%)
No Illicit Drug Use or Homelessness, n (%)	270 (27.3%)
Correctional Facility Inmates, n (%)	158 (16.0%)
Men Who Have Sex with Men (MSM), n (%) (male cases only)	20 (2.0%)
Close Contact with a Case, n (%)	190 (19.2%)
History of Hepatitis B (HBV), n (%)	11 (1.1%)
History of Hepatitis C (HCV), n (%)	285 (28.8%)
HBV & HCV, n (%)	22 (2.2%)
Lost to Follow-up, n (%)	337 (34.1%)

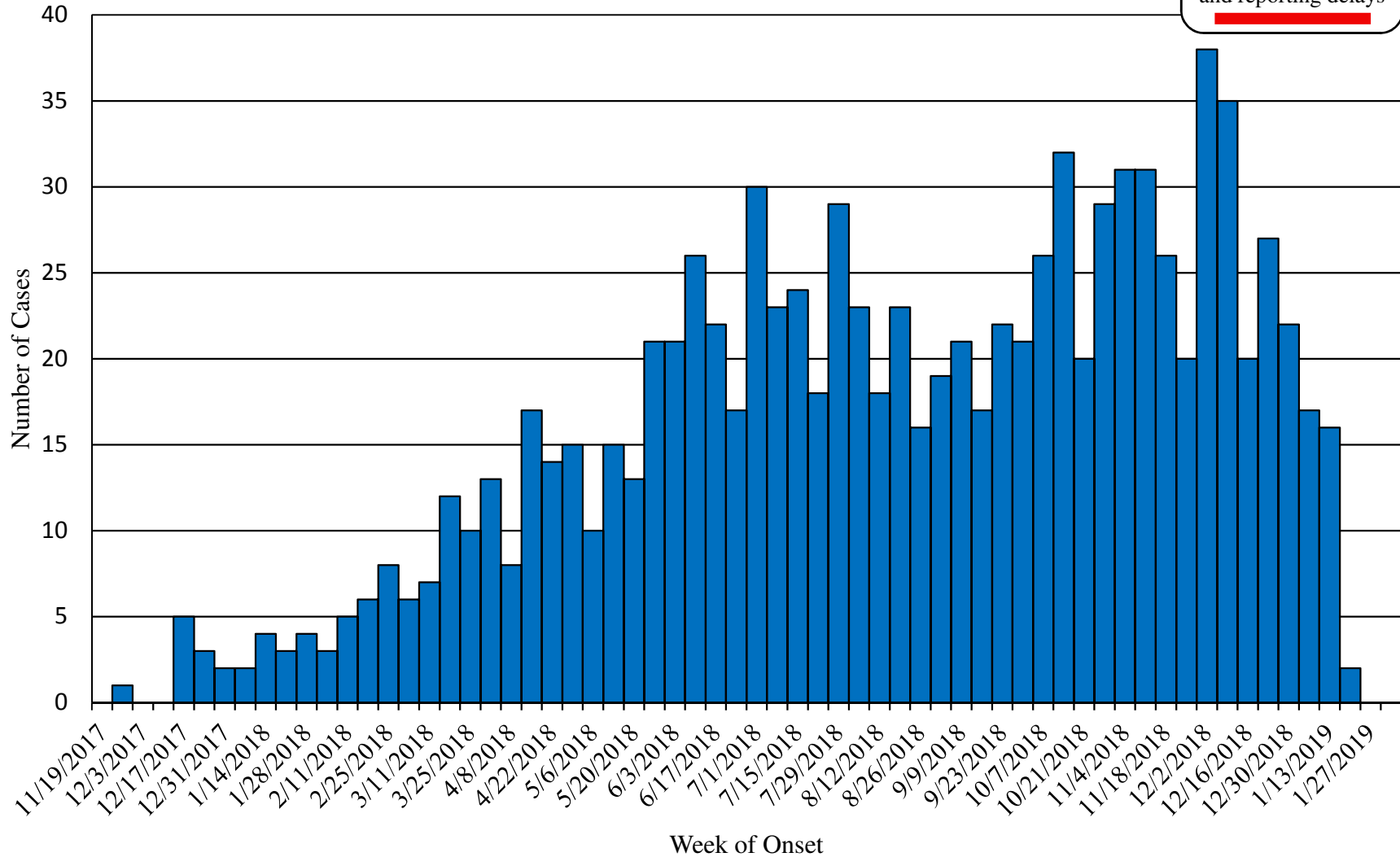
*Tables only include outbreak-related cases as they pertain to the outbreak case definition.

**Investigations are ongoing. Data is subject to change and will be updated by 2 PM each Friday.

Data analyzed on 2/7/19, Epidemiology Resource Center, Indiana State Department of Health, 2019.

Total Cases of Hep A in Indiana by Week of Onset Nov 2017- Feb 2019 (as of 2/7/2019)

Cases likely to increase due to 15-50 day incubation period and reporting delays



*If illness onset date was not identified then first lab date was used in place