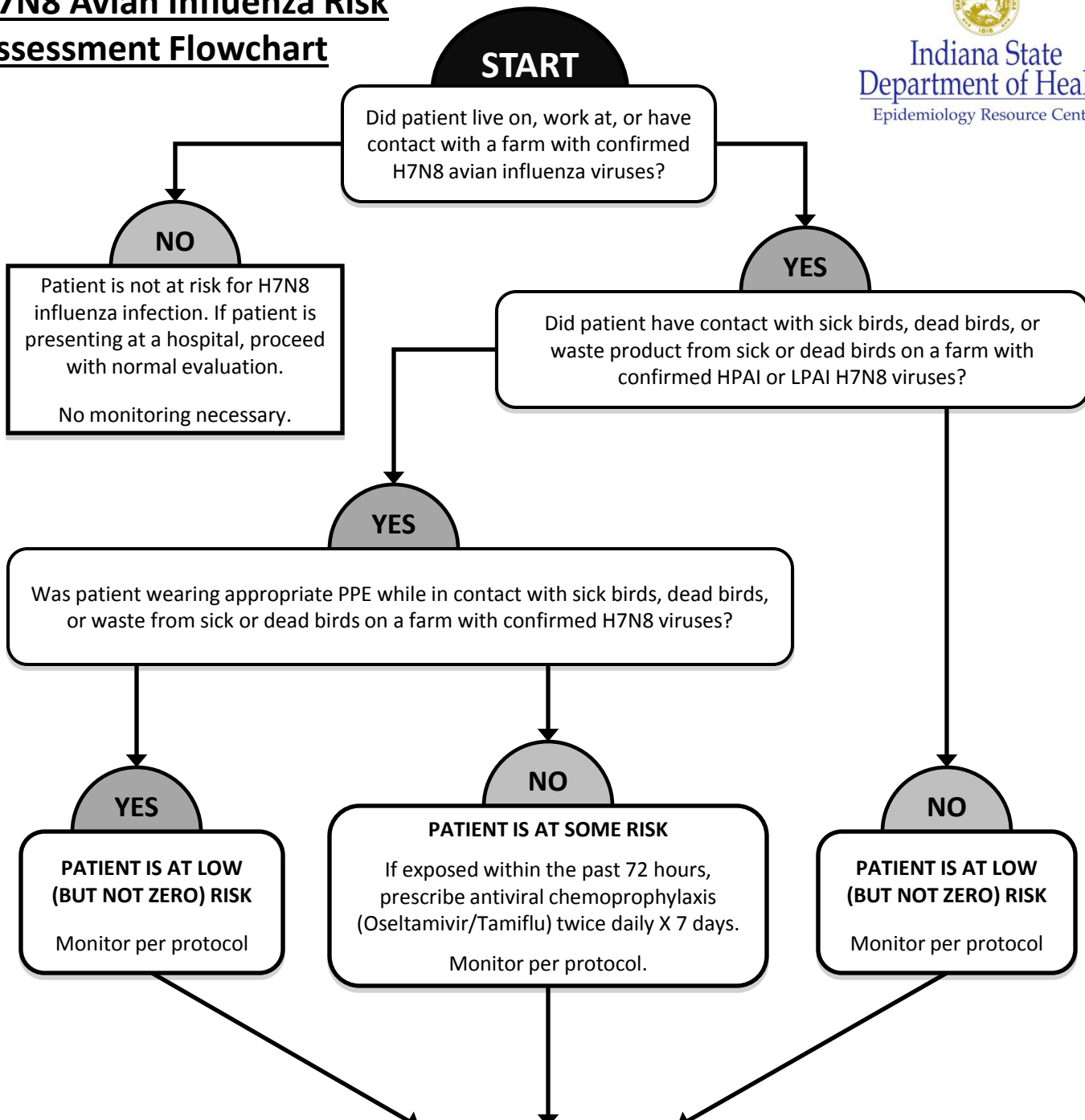




# H7N8 Avian Influenza Risk Assessment Flowchart



- If symptomatic with ILI\***
1. CALL ISDH (317-233-7125 M-F 8:15-4:45, 317-233-1325 after hours) and local health department: 812-309-0773.
  2. Collect nasopharyngeal and oropharyngeal specimens for molecular diagnostic testing for influenza.
  3. Prescribe antiviral treatment with oseltamivir (Tamiflu) twice daily X 5 days.
  4. Monitor patient for 10 days **OR** hospitalize and treat.

\*Includes one or more of: fever, chills, cough, sore throat, runny or stuffy nose, pneumonia, conjunctivitis, sneezing, wheezing, shortness of breath, fatigue, body aches, headaches, nausea, vomiting, diarrhea, rash, seizures