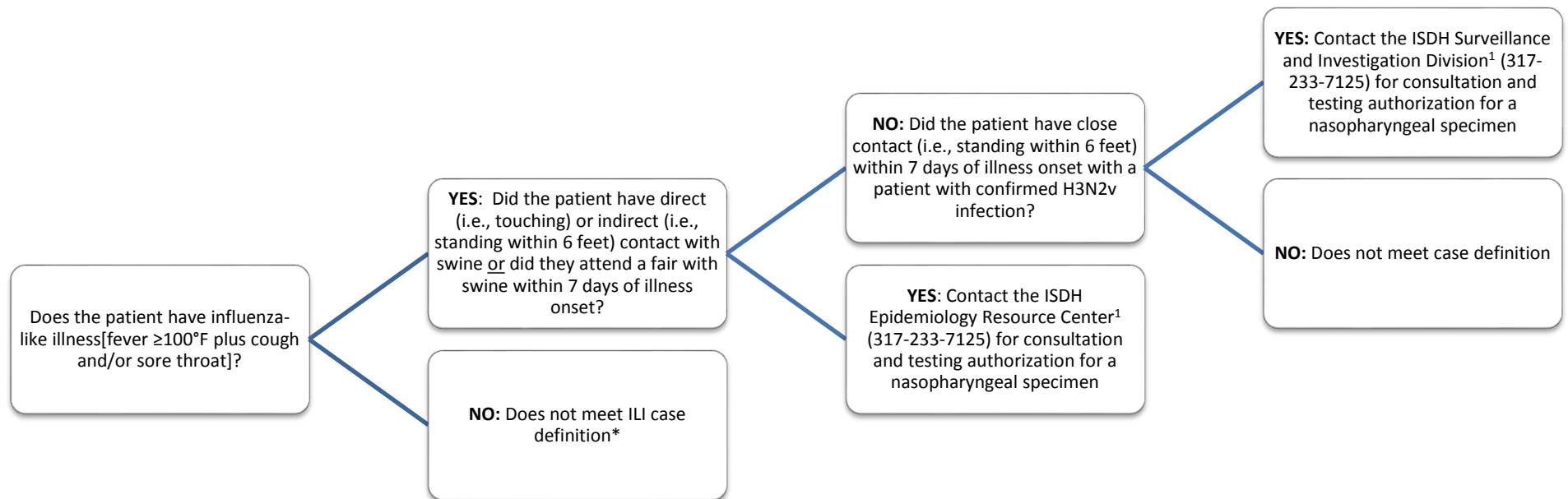


Case Definition Flow Chart for Patients with Suspect Influenza A(H3N2)v Virus Infection



¹For assistance after normal business hours or on weekends, contact (317) 233-1325.

*The ISDH may still authorize testing even if the patient doesn't meet the standard ILI case definition. The definition may be kept open when considering possible variant influenza. The ISDH may still test for persons who have had swine exposure and onset of respiratory symptoms (with or without fever). Contact the ISDH Epidemiology Resource Center (ERC) (317-233-7125) for consultation.