



## DIVISION OF FAMILY RESOURCES

# Wells County Monthly Management Report April 2018

### State of Indiana

Eric Holcomb  
Governor

### Family and Social Services Administration

Jennifer Walthall, M.D.  
Secretary

### Division of Family Resources

Adrienne Shields  
Director

For questions regarding data on this report contact:  
[office.Communications@fssa.IN.gov](mailto:office.Communications@fssa.IN.gov)



## State of Indiana

Published May 2018



## DIVISION OF FAMILY RESOURCES

### Monthly Management Report

Reporting Month: April 2018

Location: Wells County

#### TEMPORARY ASSISTANCE FOR NEEDY FAMILIES (TANF)

Child-Only and One-Parent Families	Apr 30, 2018	March 2018	April 2017	Annual Change
Number of families receiving TANF Grants	13	13	14	-7.14%
Total number of grant recipients	20	22	24	-16.67%
Number of adult grant recipients	1	1	1	0.00%
Number of child grant recipients	19	21	23	-17.39%
Total payments	\$2,169	\$2,367	\$2,474	-12.33%
Average payment per case	\$166.85	\$182.08	\$176.71	-5.58%
Average payment per recipient	\$108.45	\$107.59	\$103.08	5.21%
Number of cases with benefits reduced to zero	0	0	0	0%
Number of recipients with benefits reduced to zero	0	0	0	0%
Number of adult recipients with benefit reduced to zero	0	0	0	0%
Number of child recipients with benefit reduced to zero	0	0	0	0%

Two-Parent Families	Apr 30, 2018	March 2018	April 2017	Annual Change
Number of families receiving TANF Grants	1	1	1	0.00%
Total number of grant recipients	5	5	5	0.00%
Number of adult grant recipients	2	2	2	0.00%
Number of child grant recipients	3	3	3	0.00%
Total payments	\$256	\$256	\$405	-36.79%
Average payment per case	\$256.00	\$256.00	\$405.00	-36.79%
Average payment per recipient	\$51.20	\$51.20	\$81.00	-36.79%
Number of cases with benefits reduced to zero	0	0	0	0%
Number of recipients with benefits reduced to zero	0	0	0	0%
Number of adult recipients with benefit reduced to zero	0	0	0	0%
Number of child recipients with benefit reduced to zero	0	0	0	0%

**Note:**

All data July 2014 and following will be broken out according to the new DFR region structure effective July 1 2014.

Source:



## DIVISION OF FAMILY RESOURCES

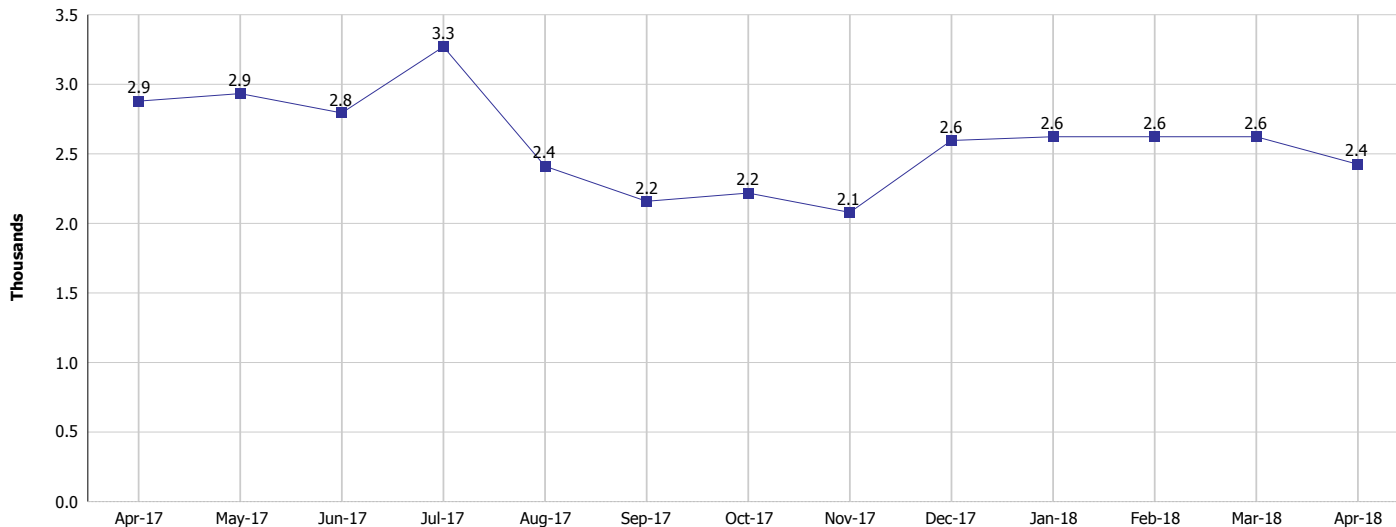
### Monthly Management Report

Reporting Month: April 2018

Location: Wells County

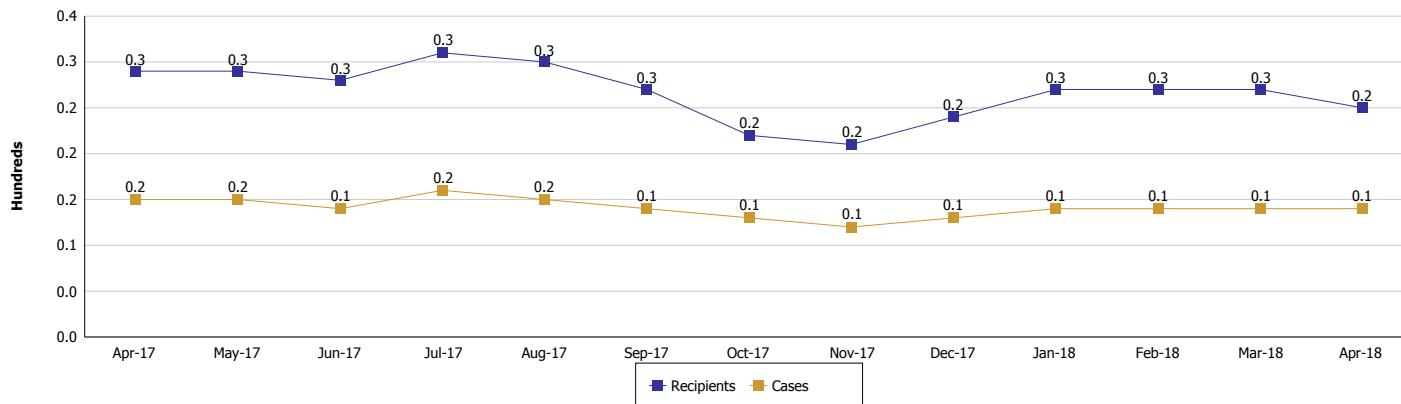
#### TEMPORARY ASSISTANCE FOR NEEDY FAMILIES (TANF)

#### TANF Regular And TANF Two-Parent Cash Assistance



#### TANF Cases and Recipients

(TANF Regular and TANF Two-Parent)



**Note:**

All data July 2014 and following will be broken out according to the new DFR region structure effective July 1 2014.



## DIVISION OF FAMILY RESOURCES

### Monthly Management Report

Reporting Month: April 2018

Location: Wells County

#### SUPPLEMENTAL NUTRITION ASSISTANCE PROGRAM (SNAP)

	April 2018	March 2018	April 2017	Annual Change
Total issuance	\$147,393	\$147,916	\$158,332	-6.91%
Number of households receiving SNAP benefits	625	642	668	-6.44%
Number of recipients	1,390	1,419	1,493	-6.90%
Average issuance per household	\$235.83	\$230.4	\$237.02	-0.50%
Average issuance per recipient	\$106.04	\$104.24	\$106.05	-0.01%

**Note:**

All data July 2014 and following will be broken out according to the new DFR region structure effective July 1 2014.



## DIVISION OF FAMILY RESOURCES

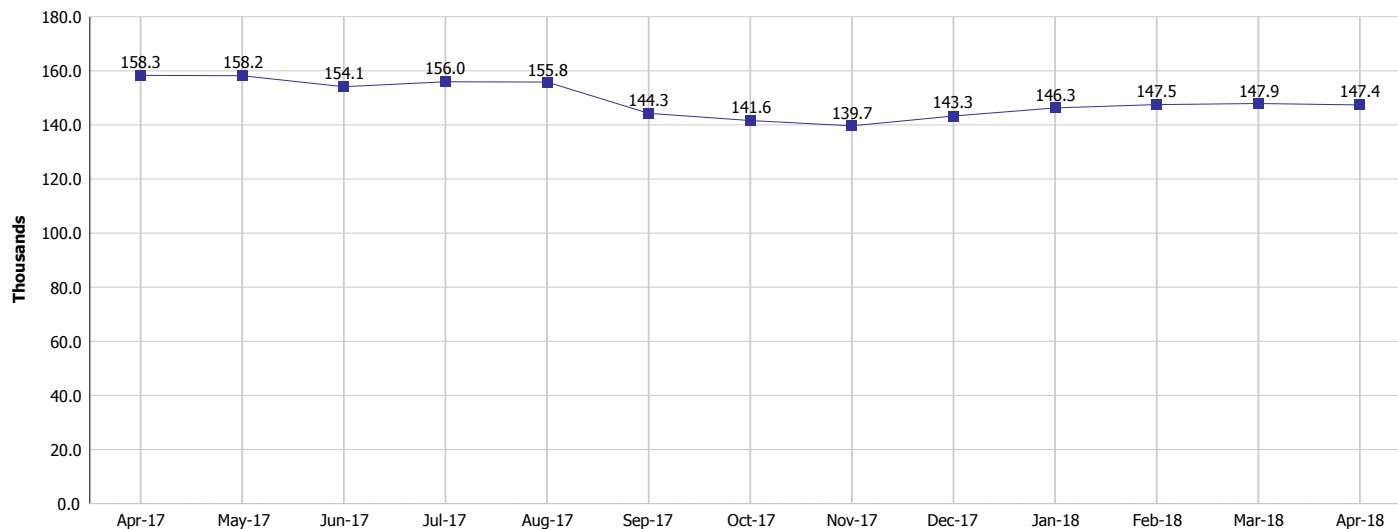
### Monthly Management Report

Reporting Month: April 2018

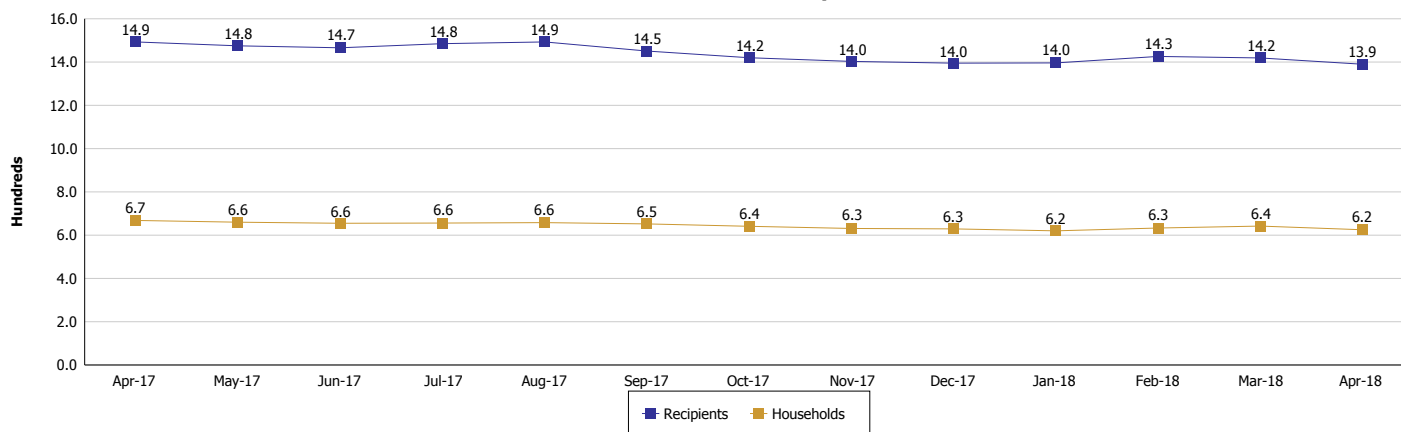
Location: Wells County

#### SUPPLEMENTAL NUTRITION ASSISTANCE PROGRAM (SNAP)

##### SNAP Issuance



##### SNAP Households and Recipients



**Note:**

All data July 2014 and following will be broken out according to the new DFR region structure effective July 1 2014.



## DIVISION OF FAMILY RESOURCES

### Monthly Management Report

Reporting Month: April 2018

Location: Wells County

#### HIP 2.0 and SNAP

	April 2018	March 2018	April 2017	Annual Change
Total HIP 2.0 Members	1,158	1,172	1,237	-6.39%
HIP Members also SNAP Recipients	340	351	358	-5.03%
Percentage HIP Members SNAP Recipients	29.4%	29.9%	28.9%	-6.11%
HIP Members SNAP ABAWDs	8	7	9	-11.11%
Percentage HIP Members SNAP ABAWDs	0.7%	0.6%	0.7%	-6.11%

**Note:**

All data July 2014 and following will be broken out according to the new DFR region structure effective July 1 2014.



## DIVISION OF FAMILY RESOURCES

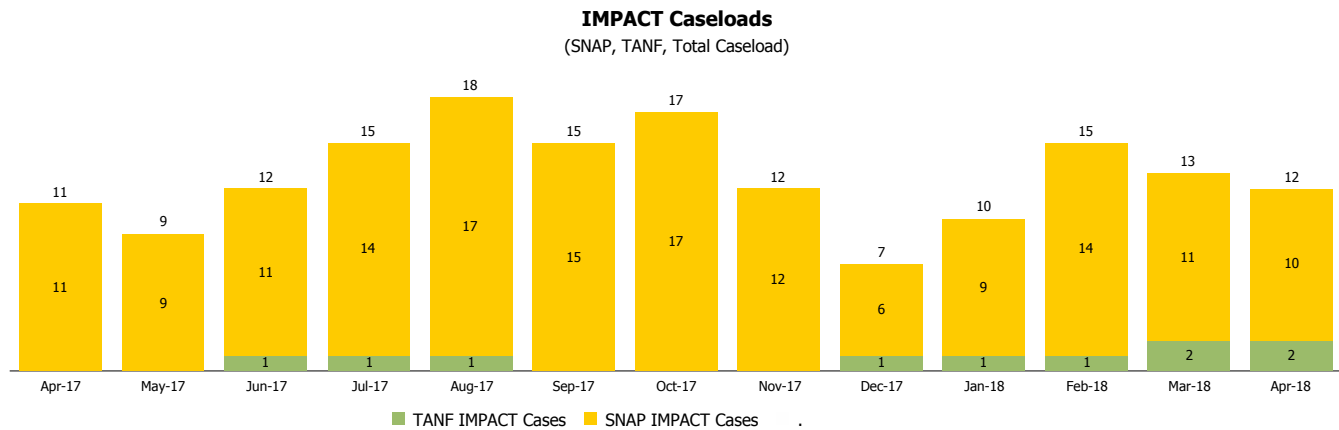
### Monthly Management Report

Reporting Month: April 2018

Location: Wells County

#### INDIANA MANPOWER PLACEMENT AND COMPREHENSIVE TRAINING (IMPACT)

	April 2018	March 2018	April 2017	Annual Change
Number of IMPACT cases	12	13	11	9.09%
Number of TANF IMPACT adults	2	2	0	
Number of SNAP IMPACT Cases	10	11	11	-9.09%
Total number of adults employed	1	3	2	-50.00%
Number of TANF IMPACT adults newly employed (within past 30 days)	0	0	0	
Number of SNAP IMPACT adults employed	1	3	2	-50.00%
Total number of adults ineligible due to employment	15	19	22	-31.82%
Number of TANF adults ineligible due to employment	0	0	0	
Number of SNAP adults ineligible due to employment	15	19	22	-31.82%



**Note:**

All data July 2014 and following will be broken out according to the new DFR region structure effective July 1 2014.