



DIVISION OF FAMILY RESOURCES

Warrick County Monthly Management Report October 2019

State of Indiana

Eric Holcomb
Governor

Family and Social Services Administration

Jennifer Walthall, M.D.
Secretary

Division of Family Resources

Adrienne Shields
Director

For questions regarding data on this report contact:
office.Communications@fssa.IN.gov



State of Indiana

Published November 2019



DIVISION OF FAMILY RESOURCES

Monthly Management Report

Reporting Month: October 2019

Location: Warrick County

TEMPORARY ASSISTANCE FOR NEEDY FAMILIES (TANF)

Child-Only and One-Parent Families	Oct 31, 2019	September 2019	October 2018	Annual Change
Number of families receiving TANF Grants	27	27	33	-18.18%
Total number of grant recipients	46	51	56	-17.86%
Number of adult grant recipients	4	4	7	-42.86%
Number of child grant recipients	42	47	49	-14.29%
Total payments	\$5,005	\$5,069	\$6,152	-18.64%
Average payment per case	\$185.37	\$187.74	\$186.42	-0.57%
Average payment per recipient	\$108.80	\$99.39	\$109.86	-0.96%
Number of cases with benefits reduced to zero	0	0	0	0%
Number of recipients with benefits reduced to zero	0	0	0	0%
Number of adult recipients with benefit reduced to zero	0	0	0	0%
Number of child recipients with benefit reduced to zero	0	0	0	0%

Two-Parent Families	Oct 31, 2019	September 2019	October 2018	Annual Change
Number of families receiving TANF Grants	0	0	0	0%
Total number of grant recipients	0	0	0	0%
Number of adult grant recipients	0	0	0	0%
Number of child grant recipients	0	0	0	0%
Total payments	\$0	\$0	\$0	0%
Average payment per case	\$0.00	\$0.00	\$0.00	0.00%
Average payment per recipient	\$0.00	\$0.00	\$0.00	0.00%
Number of cases with benefits reduced to zero	0	0	0	0%
Number of recipients with benefits reduced to zero	0	0	0	0%
Number of adult recipients with benefit reduced to zero	0	0	0	0%
Number of child recipients with benefit reduced to zero	0	0	0	0%

Note:

All data July 2014 and following will be broken out according to the new DFR region structure effective July 1 2014.

Source:



DIVISION OF FAMILY RESOURCES

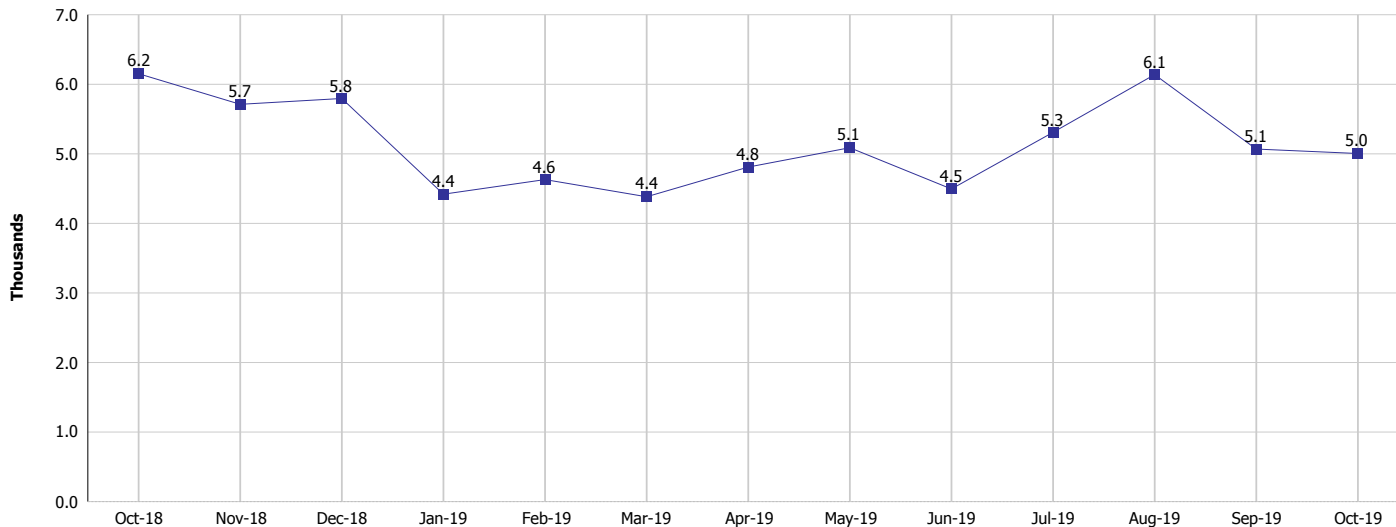
Monthly Management Report

Reporting Month: October 2019

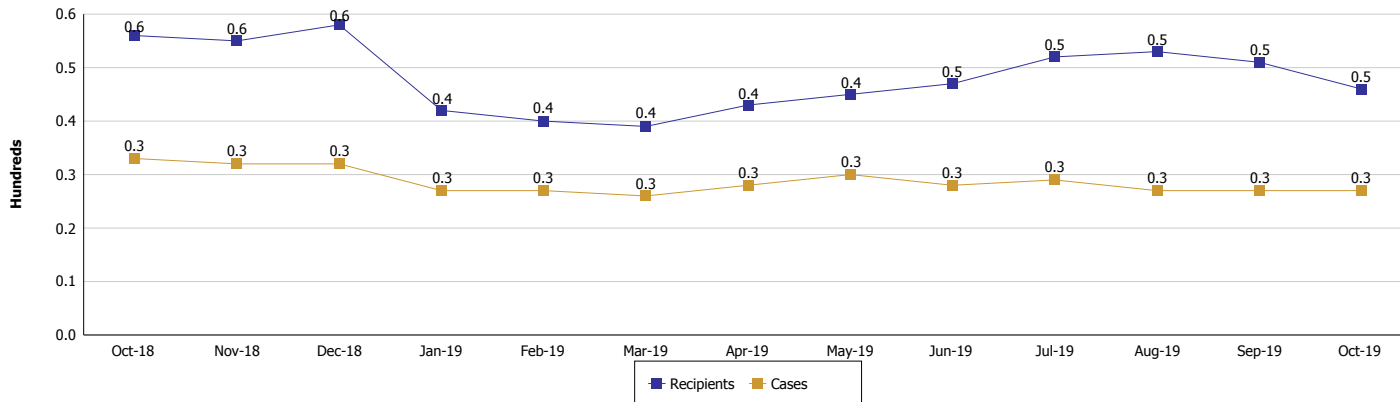
Location: Warrick County

TEMPORARY ASSISTANCE FOR NEEDY FAMILIES (TANF)

TANF Regular And TANF Two-Parent Cash Assistance



TANF Cases and Recipients (TANF Regular and TANF Two-Parent)



Note:

All data July 2014 and following will be broken out according to the new DFR region structure effective July 1 2014.



DIVISION OF FAMILY RESOURCES

Monthly Management Report

Reporting Month: October 2019

Location: Warrick County

SUPPLEMENTAL NUTRITION ASSISTANCE PROGRAM (SNAP)

	October 2019	September 2019	October 2018	Annual Change
Total issuance	\$259,896	\$252,663	\$271,173	-4.16%
Number of households receiving SNAP benefits	1,046	1,028	1,112	-5.94%
Number of recipients	2,374	2,329	2,575	-7.81%
Average issuance per household	\$248.47	\$245.78	\$243.86	1.89%
Average issuance per recipient	\$109.48	\$108.49	\$105.31	3.96%

Note:

All data July 2014 and following will be broken out according to the new DFR region structure effective July 1 2014.



DIVISION OF FAMILY RESOURCES

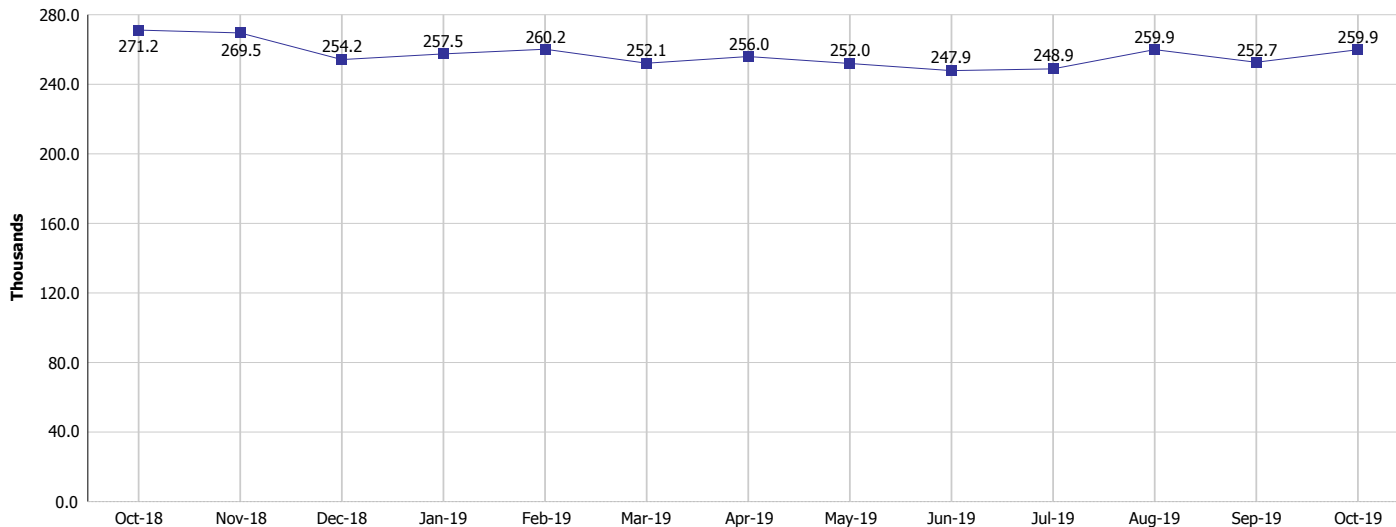
Monthly Management Report

Reporting Month: October 2019

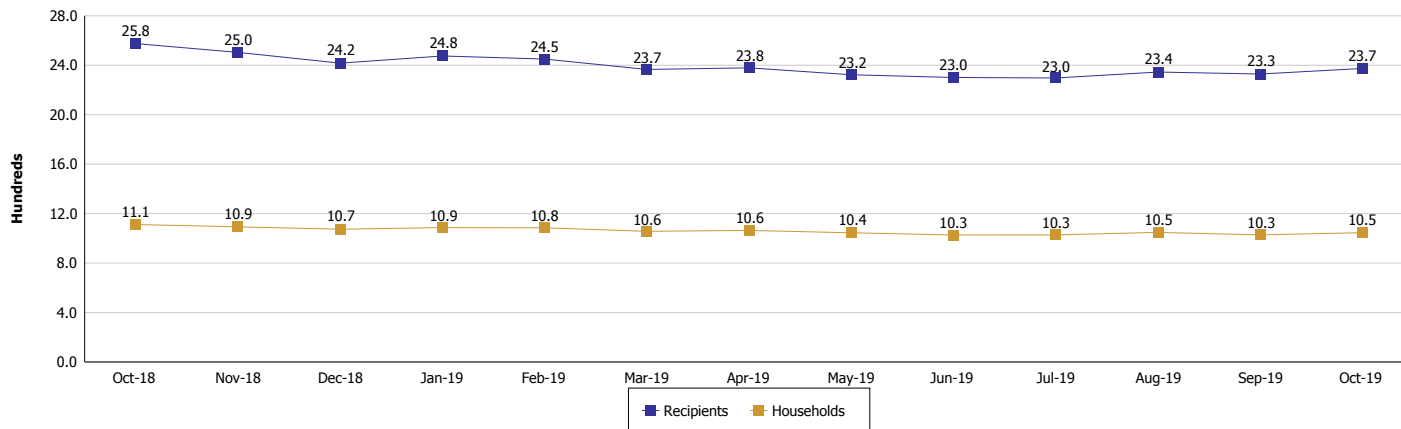
Location: Warrick County

SUPPLEMENTAL NUTRITION ASSISTANCE PROGRAM (SNAP)

SNAP Issuance



SNAP Households and Recipients



Note:

All data July 2014 and following will be broken out according to the new DFR region structure effective July 1 2014.



DIVISION OF FAMILY RESOURCES

Monthly Management Report

Reporting Month: October 2019

Location: Warrick County

HIP 2.0 and SNAP

	October 2019	September 2019	October 2018	Annual Change
Total HIP 2.0 Members	2,379	2,368	2,257	5.41%
HIP Members also SNAP Recipients	641	617	646	-0.77%
Percentage HIP Members SNAP Recipients	26.9%	26.1%	28.6%	3.87%
HIP Members SNAP ABAWDs	14	10	18	-22.22%
Percentage HIP Members SNAP ABAWDs	0.6%	0.4%	0.8%	3.87%

Note:

All data July 2014 and following will be broken out according to the new DFR region structure effective July 1 2014.



DIVISION OF FAMILY RESOURCES

Monthly Management Report

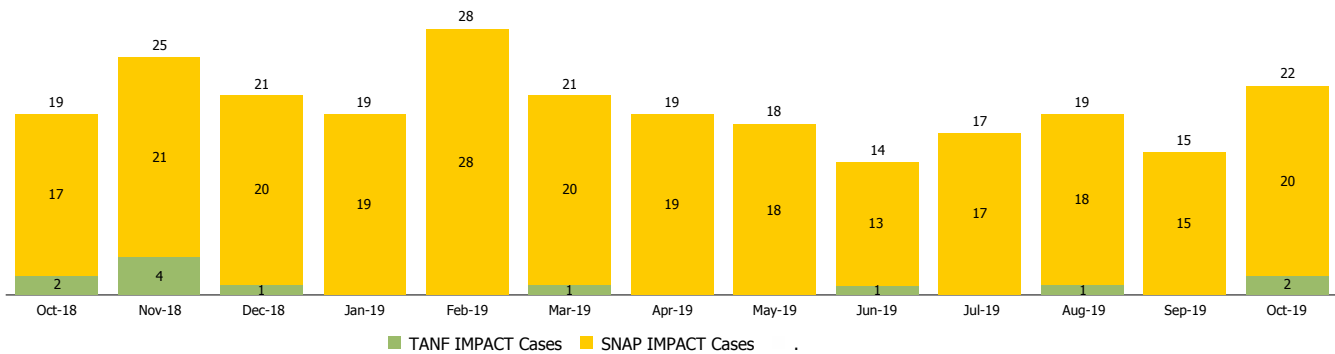
Reporting Month: October 2019

Location: Warrick County

INDIANA MANPOWER PLACEMENT AND COMPREHENSIVE TRAINING (IMPACT)

	October 2019	September 2019	October 2018	Annual Change
Number of IMPACT cases	22	15	19	15.79%
Number of TANF IMPACT adults	2	0	2	0.00%
Number of SNAP IMPACT Cases	20	15	17	17.65%
Total number of adults employed	1	3	4	-75.00%
Number of TANF IMPACT adults newly employed (within past 30 days)	0	0	1	-100.00%
Number of SNAP IMPACT adults employed	1	3	3	-66.67%
Total number of adults ineligible due to employment	15	28	22	-31.82%
Number of TANF adults ineligible due to employment	0	0	0	
Number of SNAP adults ineligible due to employment	15	28	22	-31.82%

IMPACT Caseloads
(SNAP, TANF, Total Caseload)



Note:

All data July 2014 and following will be broken out according to the new DFR region structure effective July 1 2014.