



## DIVISION OF FAMILY RESOURCES

# Steuben County Monthly Management Report April 2018

### State of Indiana

Eric Holcomb  
Governor

### Family and Social Services Administration

Jennifer Walthall, M.D.  
Secretary

### Division of Family Resources

Adrienne Shields  
Director

For questions regarding data on this report contact:  
[office.Communications@fssa.IN.gov](mailto:office.Communications@fssa.IN.gov)



## State of Indiana

Published May 2018



## DIVISION OF FAMILY RESOURCES

### Monthly Management Report

Reporting Month: April 2018

Location: Steuben County

#### TEMPORARY ASSISTANCE FOR NEEDY FAMILIES (TANF)

Child-Only and One-Parent Families	Apr 30, 2018	March 2018	April 2017	Annual Change
Number of families receiving TANF Grants	20	23	19	5.26%
Total number of grant recipients	41	45	36	13.89%
Number of adult grant recipients	5	6	2	150.00%
Number of child grant recipients	36	39	34	5.88%
Total payments	\$4,130	\$4,650	\$3,496	18.14%
Average payment per case	\$206.50	\$202.17	\$184.00	12.23%
Average payment per recipient	\$100.73	\$103.33	\$97.11	3.73%
Number of cases with benefits reduced to zero	0	0	0	0%
Number of recipients with benefits reduced to zero	0	0	0	0%
Number of adult recipients with benefit reduced to zero	0	0	0	0%
Number of child recipients with benefit reduced to zero	0	0	0	0%

Two-Parent Families	Apr 30, 2018	March 2018	April 2017	Annual Change
Number of families receiving TANF Grants	1	2	1	0.00%
Total number of grant recipients	3	6	3	0.00%
Number of adult grant recipients	0	2	0	0%
Number of child grant recipients	3	4	3	0.00%
Total payments	\$256	\$485	\$256	0.00%
Average payment per case	\$256.00	\$242.50	\$256.00	0.00%
Average payment per recipient	\$85.33	\$80.83	\$85.33	0.00%
Number of cases with benefits reduced to zero	0	0	0	0%
Number of recipients with benefits reduced to zero	0	0	0	0%
Number of adult recipients with benefit reduced to zero	0	0	0	0%
Number of child recipients with benefit reduced to zero	0	0	0	0%

**Note:**

All data July 2014 and following will be broken out according to the new DFR region structure effective July 1 2014.

Source:



## DIVISION OF FAMILY RESOURCES

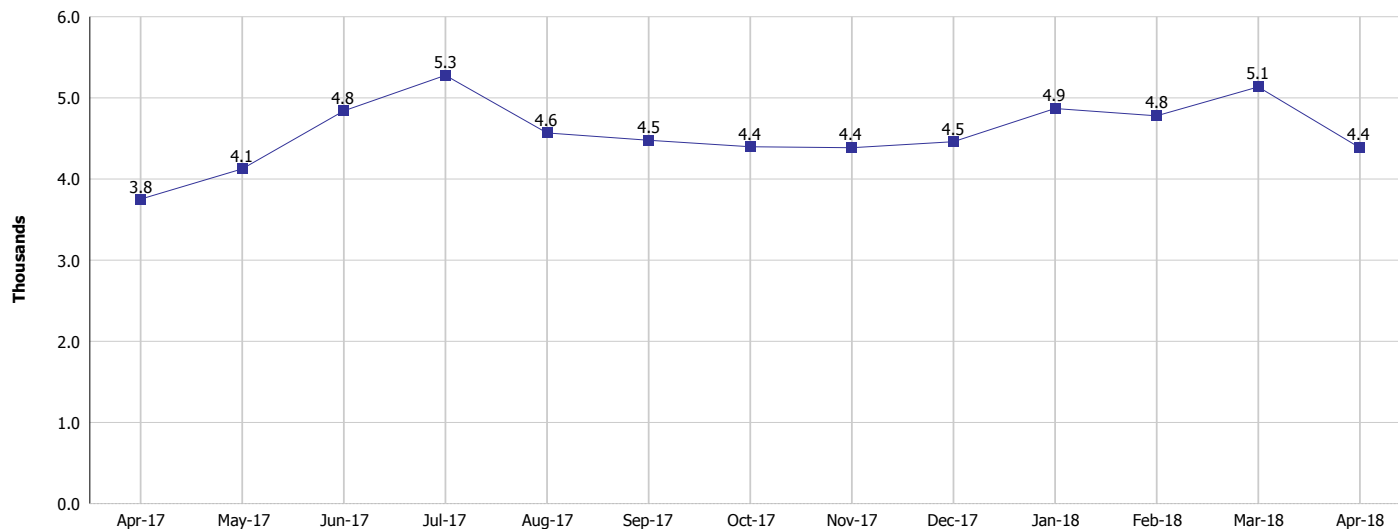
### Monthly Management Report

Reporting Month: April 2018

Location: Steuben County

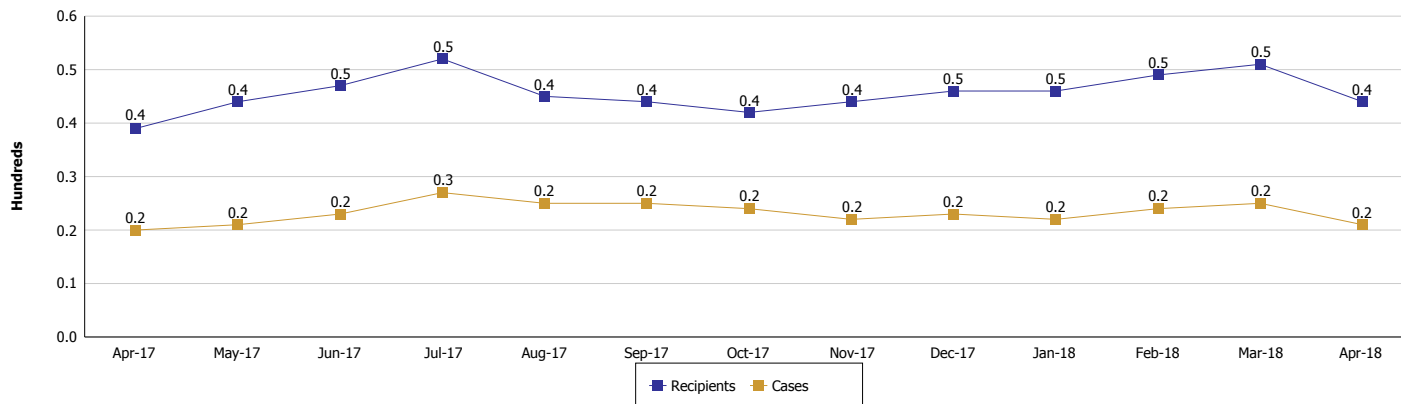
#### TEMPORARY ASSISTANCE FOR NEEDY FAMILIES (TANF)

#### TANF Regular And TANF Two-Parent Cash Assistance



#### TANF Cases and Recipients

(TANF Regular and TANF Two-Parent)



**Note:**

All data July 2014 and following will be broken out according to the new DFR region structure effective July 1 2014.



## DIVISION OF FAMILY RESOURCES

### Monthly Management Report

Reporting Month: April 2018

Location: Steuben County

#### SUPPLEMENTAL NUTRITION ASSISTANCE PROGRAM (SNAP)

	April 2018	March 2018	April 2017	Annual Change
Total issuance	\$222,947	\$224,354	\$244,695	-8.89%
Number of households receiving SNAP benefits	926	952	1,004	-7.77%
Number of recipients	2,109	2,152	2,266	-6.93%
Average issuance per household	\$240.76	\$235.67	\$243.72	-1.21%
Average issuance per recipient	\$105.71	\$104.25	\$107.99	-2.11%

**Note:**

All data July 2014 and following will be broken out according to the new DFR region structure effective July 1 2014.



# DIVISION OF FAMILY RESOURCES

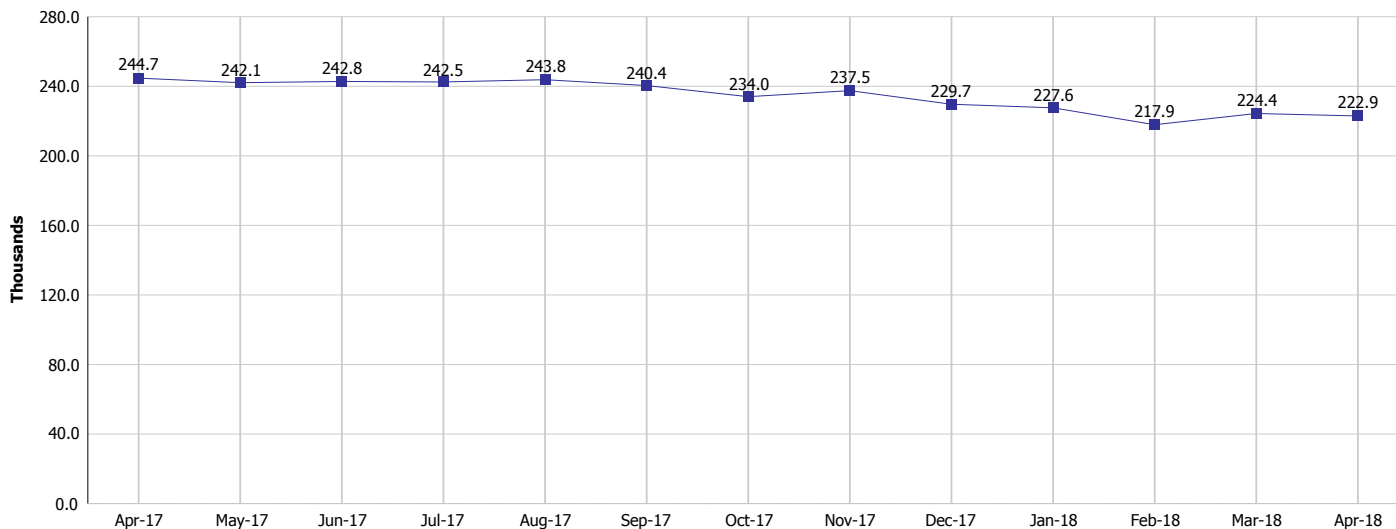
## Monthly Management Report

Reporting Month: April 2018

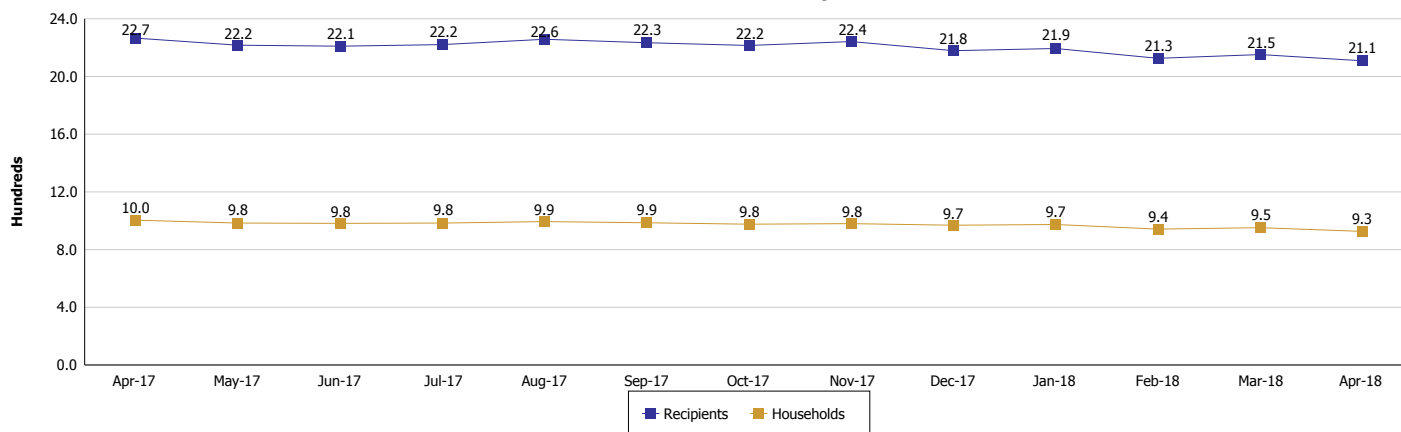
Location: Steuben County

### SUPPLEMENTAL NUTRITION ASSISTANCE PROGRAM (SNAP)

#### SNAP Issuance



#### SNAP Households and Recipients



#### Note:

All data July 2014 and following will be broken out according to the new DFR region structure effective July 1 2014.



## DIVISION OF FAMILY RESOURCES

### Monthly Management Report

Reporting Month: April 2018

Location: Steuben County

#### HIP 2.0 and SNAP

	April 2018	March 2018	April 2017	Annual Change
Total HIP 2.0 Members	1,685	1,704	1,671	0.84%
HIP Members also SNAP Recipients	515	516	536	-3.92%
Percentage HIP Members SNAP Recipients	30.6%	30.3%	32.1%	-0.76%
HIP Members SNAP ABAWDs	11	16	21	-47.62%
Percentage HIP Members SNAP ABAWDs	0.7%	0.9%	1.3%	-0.76%

**Note:**

All data July 2014 and following will be broken out according to the new DFR region structure effective July 1 2014.



## DIVISION OF FAMILY RESOURCES

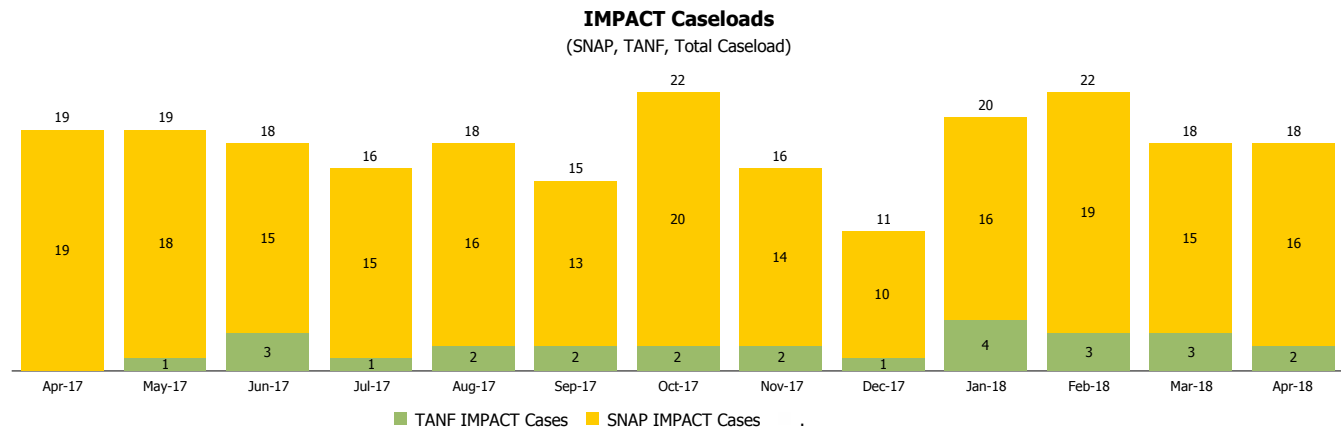
### Monthly Management Report

Reporting Month: April 2018

Location: Steuben County

#### INDIANA MANPOWER PLACEMENT AND COMPREHENSIVE TRAINING (IMPACT)

	April 2018	March 2018	April 2017	Annual Change
Number of IMPACT cases	18	18	19	-5.26%
Number of TANF IMPACT adults	2	3	0	
Number of SNAP IMPACT Cases	16	15	19	-15.79%
Total number of adults employed	3	4	10	-70.00%
Number of TANF IMPACT adults newly employed (within past 30 days)	0	0	0	
Number of SNAP IMPACT adults employed	3	4	10	-70.00%
Total number of adults ineligible due to employment	25	14	21	19.05%
Number of TANF adults ineligible due to employment	0	0	1	-100.00%
Number of SNAP adults ineligible due to employment	25	14	20	25.00%



**Note:**

All data July 2014 and following will be broken out according to the new DFR region structure effective July 1 2014.