



DIVISION OF FAMILY RESOURCES

Saint Joseph County Monthly Management Report October 2019

State of Indiana

Eric Holcomb
Governor

Family and Social Services Administration

Jennifer Walthall, M.D.
Secretary

Division of Family Resources

Adrienne Shields
Director

For questions regarding data on this report contact:
office.Communications@fssa.IN.gov



State of Indiana

Published November 2019



DIVISION OF FAMILY RESOURCES

Monthly Management Report

Reporting Month: October 2019

Location: Saint Joseph County

TEMPORARY ASSISTANCE FOR NEEDY FAMILIES (TANF)

Child-Only and One-Parent Families	Oct 31, 2019	September 2019	October 2018	Annual Change
Number of families receiving TANF Grants	173	171	197	-12.18%
Total number of grant recipients	366	356	400	-8.50%
Number of adult grant recipients	51	49	50	2.00%
Number of child grant recipients	315	307	350	-10.00%
Total payments	\$33,654	\$34,860	\$38,232	-11.97%
Average payment per case	\$194.53	\$203.86	\$194.07	0.24%
Average payment per recipient	\$91.95	\$97.92	\$95.58	-3.80%
Number of cases with benefits reduced to zero	2	2	9	-77.78%
Number of recipients with benefits reduced to zero	4	4	24	-83.33%
Number of adult recipients with benefit reduced to zero	2	2	7	-71.43%
Number of child recipients with benefit reduced to zero	2	2	17	-88.24%

Two-Parent Families	Oct 31, 2019	September 2019	October 2018	Annual Change
Number of families receiving TANF Grants	11	11	12	-8.33%
Total number of grant recipients	47	46	48	-2.08%
Number of adult grant recipients	17	17	18	-5.56%
Number of child grant recipients	30	29	30	0.00%
Total payments	\$2,938	\$1,733	\$2,296	27.96%
Average payment per case	\$267.09	\$157.55	\$191.33	39.59%
Average payment per recipient	\$62.51	\$37.67	\$47.83	30.68%
Number of cases with benefits reduced to zero	1	1	2	-50.00%
Number of recipients with benefits reduced to zero	5	5	6	-16.67%
Number of adult recipients with benefit reduced to zero	2	2	2	0.00%
Number of child recipients with benefit reduced to zero	3	3	4	-25.00%

Note:

All data July 2014 and following will be broken out according to the new DFR region structure effective July 1 2014.

Source:



DIVISION OF FAMILY RESOURCES

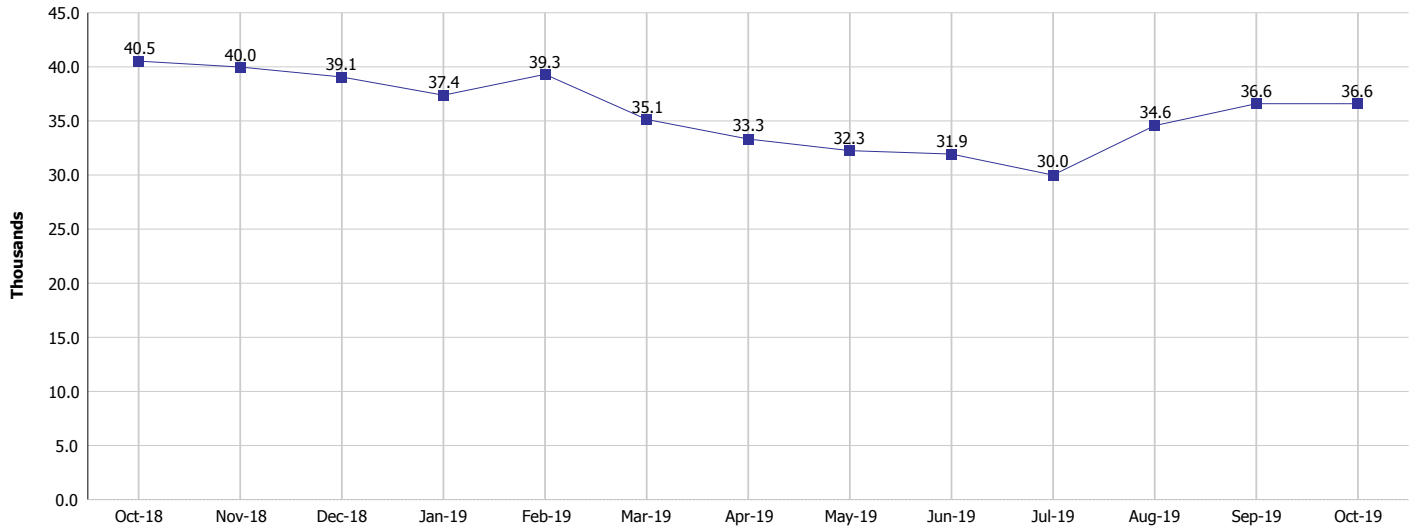
Monthly Management Report

Reporting Month: October 2019

Location: Saint Joseph County

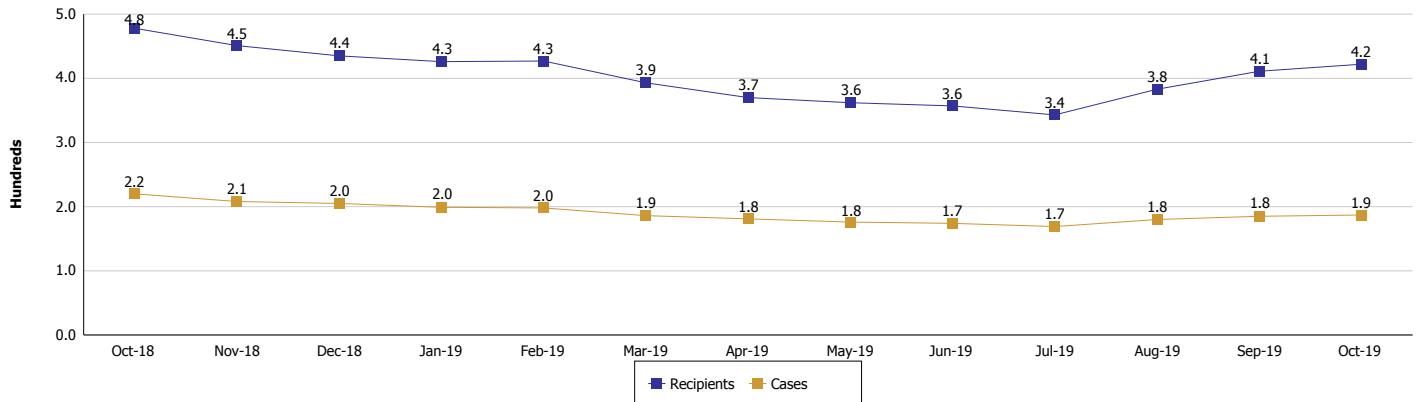
TEMPORARY ASSISTANCE FOR NEEDY FAMILIES (TANF)

TANF Regular And TANF Two-Parent Cash Assistance



TANF Cases and Recipients

(TANF Regular and TANF Two-Parent)



Note:

All data July 2014 and following will be broken out according to the new DFR region structure effective July 1 2014.



DIVISION OF FAMILY RESOURCES

Monthly Management Report

Reporting Month: October 2019

Location: Saint Joseph County

SUPPLEMENTAL NUTRITION ASSISTANCE PROGRAM (SNAP)

	October 2019	September 2019	October 2018	Annual Change
Total issuance	\$3,397,878	\$3,331,195	\$3,470,366	-2.09%
Number of households receiving SNAP benefits	12,009	11,909	12,398	-3.14%
Number of recipients	27,602	27,501	28,585	-3.44%
Average issuance per household	\$282.94	\$279.72	\$279.91	1.08%
Average issuance per recipient	\$123.1	\$121.13	\$121.41	1.39%

Note:

All data July 2014 and following will be broken out according to the new DFR region structure effective July 1 2014.



DIVISION OF FAMILY RESOURCES

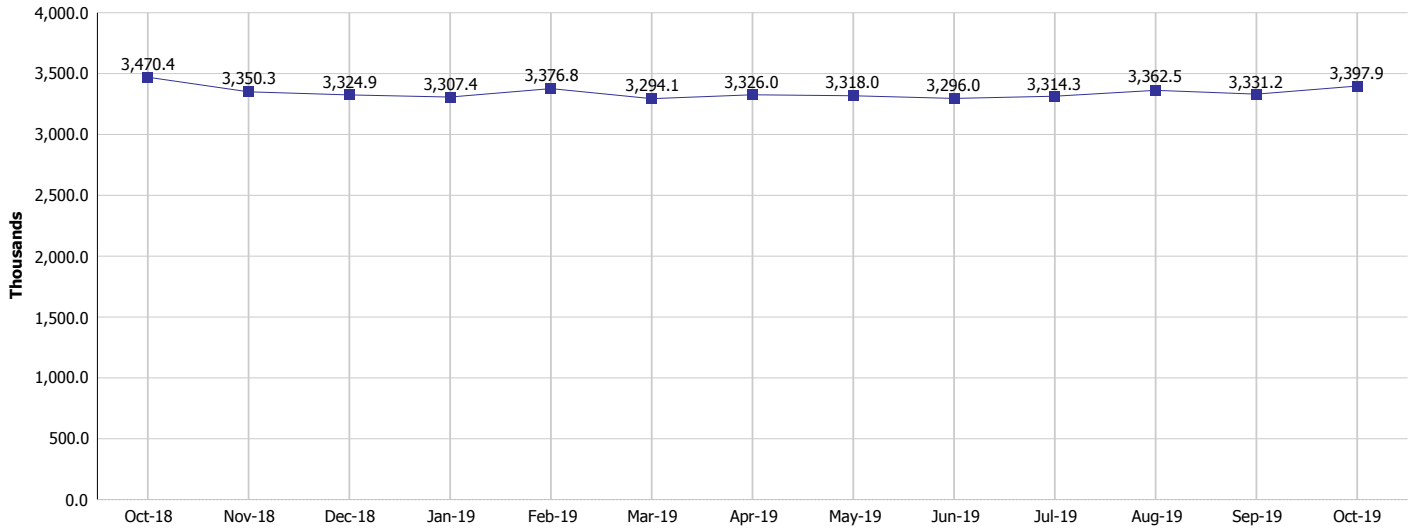
Monthly Management Report

Reporting Month: October 2019

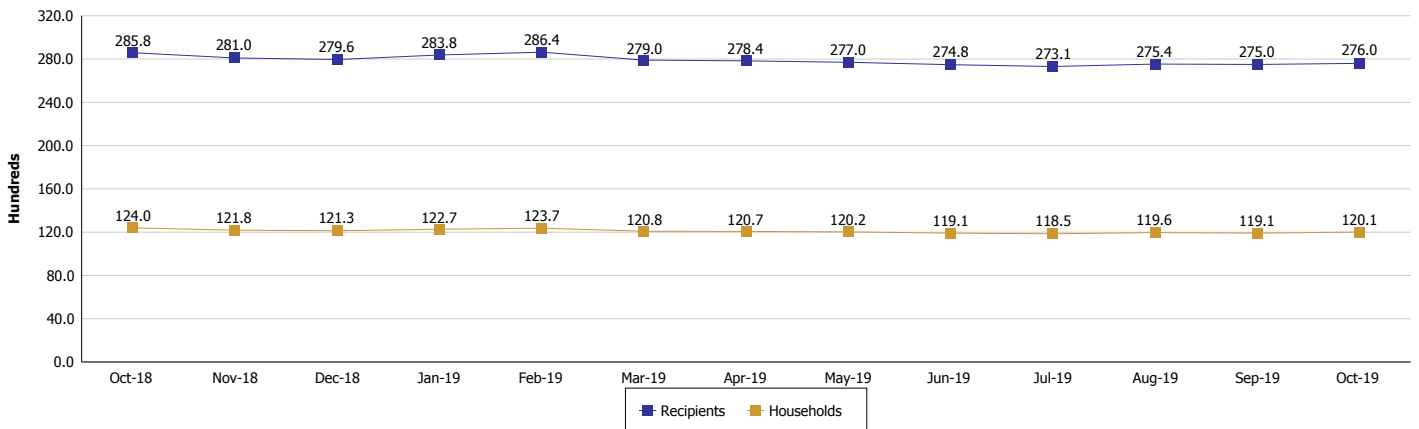
Location: Saint Joseph County

SUPPLEMENTAL NUTRITION ASSISTANCE PROGRAM (SNAP)

SNAP Issuance



SNAP Households and Recipients



Note:

All data July 2014 and following will be broken out according to the new DFR region structure effective July 1 2014.



DIVISION OF FAMILY RESOURCES

Monthly Management Report

Reporting Month: October 2019

Location: Saint Joseph County

HIP 2.0 and SNAP

	October 2019	September 2019	October 2018	Annual Change
Total HIP 2.0 Members	16,855	16,801	16,716	0.83%
HIP Members also SNAP Recipients	6,541	6,548	6,593	-0.79%
Percentage HIP Members SNAP Recipients	38.8%	39.0%	39.4%	0.12%
HIP Members SNAP ABAWDs	182	187	240	-24.17%
Percentage HIP Members SNAP ABAWDs	1.1%	1.1%	1.4%	0.12%

Note:

All data July 2014 and following will be broken out according to the new DFR region structure effective July 1 2014.



DIVISION OF FAMILY RESOURCES

Monthly Management Report

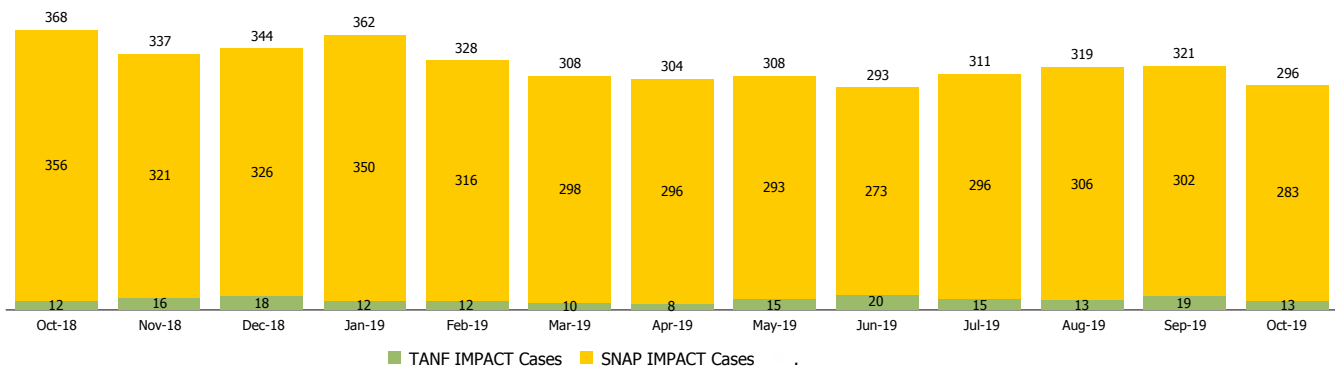
Reporting Month: October 2019

Location: Saint Joseph County

INDIANA MANPOWER PLACEMENT AND COMPREHENSIVE TRAINING (IMPACT)

	October 2019	September 2019	October 2018	Annual Change
Number of IMPACT cases	296	321	368	-19.57%
Number of TANF IMPACT adults	13	19	12	8.33%
Number of SNAP IMPACT Cases	283	302	356	-20.51%
Total number of adults employed	54	40	86	-37.21%
Number of TANF IMPACT adults newly employed (within past 30 days)	3	3	1	200.00%
Number of SNAP IMPACT adults employed	51	37	85	-40.00%
Total number of adults ineligible due to employment	200	170	247	-19.03%
Number of TANF adults ineligible due to employment	0	2	1	-100.00%
Number of SNAP adults ineligible due to employment	200	168	246	-18.70%

IMPACT Caseloads
(SNAP, TANF, Total Caseload)



Note:

All data July 2014 and following will be broken out according to the new DFR region structure effective July 1 2014.