



## DIVISION OF FAMILY RESOURCES

# Randolph County Monthly Management Report October 2019

### State of Indiana

Eric Holcomb  
Governor

### Family and Social Services Administration

Jennifer Walthall, M.D.  
Secretary

### Division of Family Resources

Adrienne Shields  
Director

For questions regarding data on this report contact:  
[office.Communications@fssa.IN.gov](mailto:office.Communications@fssa.IN.gov)



## State of Indiana

Published November 2019



## DIVISION OF FAMILY RESOURCES

### Monthly Management Report

Reporting Month: October 2019

Location: Randolph County

#### TEMPORARY ASSISTANCE FOR NEEDY FAMILIES (TANF)

Child-Only and One-Parent Families	Oct 31, 2019	September 2019	October 2018	Annual Change
Number of families receiving TANF Grants	17	16	24	-29.17%
Total number of grant recipients	29	30	47	-38.30%
Number of adult grant recipients	2	3	2	0.00%
Number of child grant recipients	27	27	45	-40.00%
Total payments	\$3,196	\$3,006	\$4,659	-31.40%
Average payment per case	\$188.00	\$187.88	\$194.12	-3.16%
Average payment per recipient	\$110.21	\$100.20	\$99.13	11.18%
Number of cases with benefits reduced to zero	4	1	0	0%
Number of recipients with benefits reduced to zero	4	2	0	0%
Number of adult recipients with benefit reduced to zero	0	0	0	0%
Number of child recipients with benefit reduced to zero	4	2	0	0%

Two-Parent Families	Oct 31, 2019	September 2019	October 2018	Annual Change
Number of families receiving TANF Grants	0	0	0	0%
Total number of grant recipients	0	0	0	0%
Number of adult grant recipients	0	0	0	0%
Number of child grant recipients	0	0	0	0%
Total payments	\$0	\$0	\$0	0%
Average payment per case	\$0.00	\$0.00	\$0.00	0.00%
Average payment per recipient	\$0.00	\$0.00	\$0.00	0.00%
Number of cases with benefits reduced to zero	0	0	0	0%
Number of recipients with benefits reduced to zero	0	0	0	0%
Number of adult recipients with benefit reduced to zero	0	0	0	0%
Number of child recipients with benefit reduced to zero	0	0	0	0%

**Note:**

All data July 2014 and following will be broken out according to the new DFR region structure effective July 1 2014.

Source:



## DIVISION OF FAMILY RESOURCES

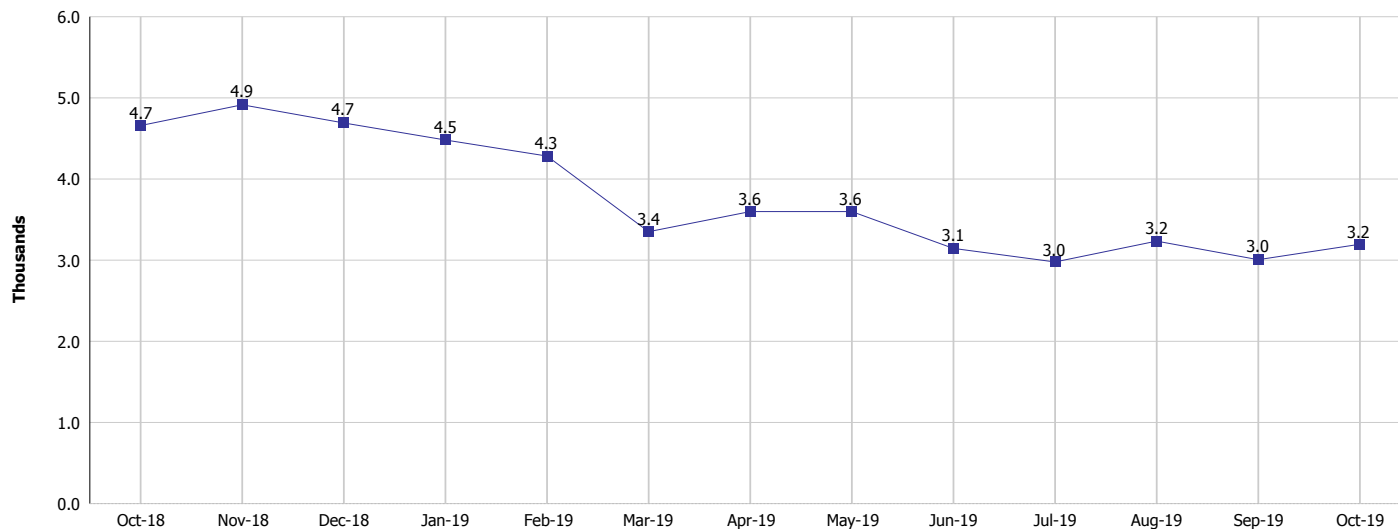
### Monthly Management Report

Reporting Month: October 2019

Location: Randolph County

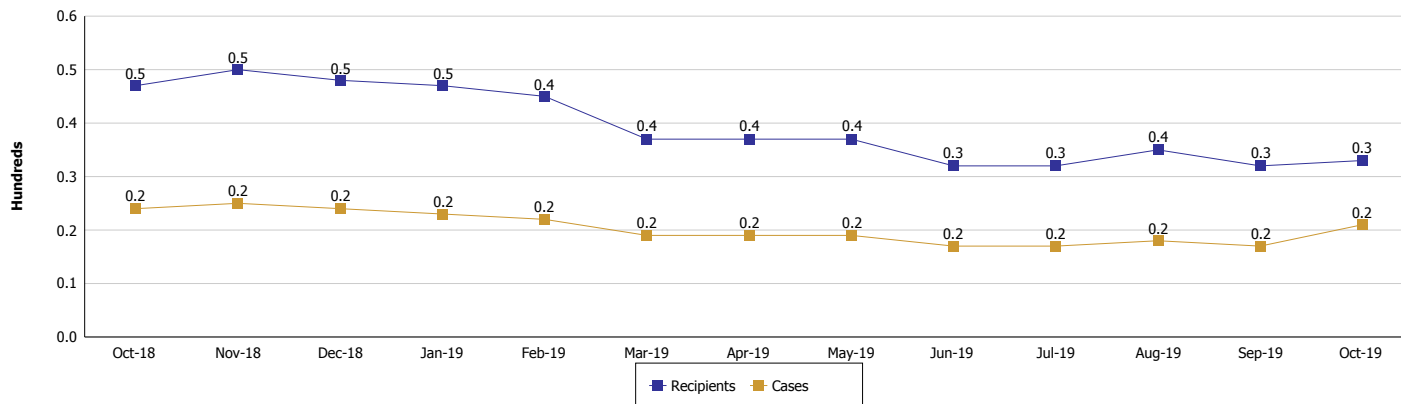
#### TEMPORARY ASSISTANCE FOR NEEDY FAMILIES (TANF)

#### TANF Regular And TANF Two-Parent Cash Assistance



#### TANF Cases and Recipients

(TANF Regular and TANF Two-Parent)



#### Note:

All data July 2014 and following will be broken out according to the new DFR region structure effective July 1 2014.



## DIVISION OF FAMILY RESOURCES

### Monthly Management Report

Reporting Month: October 2019

Location: Randolph County

#### SUPPLEMENTAL NUTRITION ASSISTANCE PROGRAM (SNAP)

	October 2019	September 2019	October 2018	Annual Change
Total issuance	\$361,072	\$253,416	\$270,999	33.24%
Number of households receiving SNAP benefits	1,515	995	1,069	41.72%
Number of recipients	3,293	2,287	2,464	33.64%
Average issuance per household	\$238.33	\$254.69	\$253.51	-5.99%
Average issuance per recipient	\$109.65	\$110.81	\$109.98	-0.30%

**Note:**

All data July 2014 and following will be broken out according to the new DFR region structure effective July 1 2014.



# DIVISION OF FAMILY RESOURCES

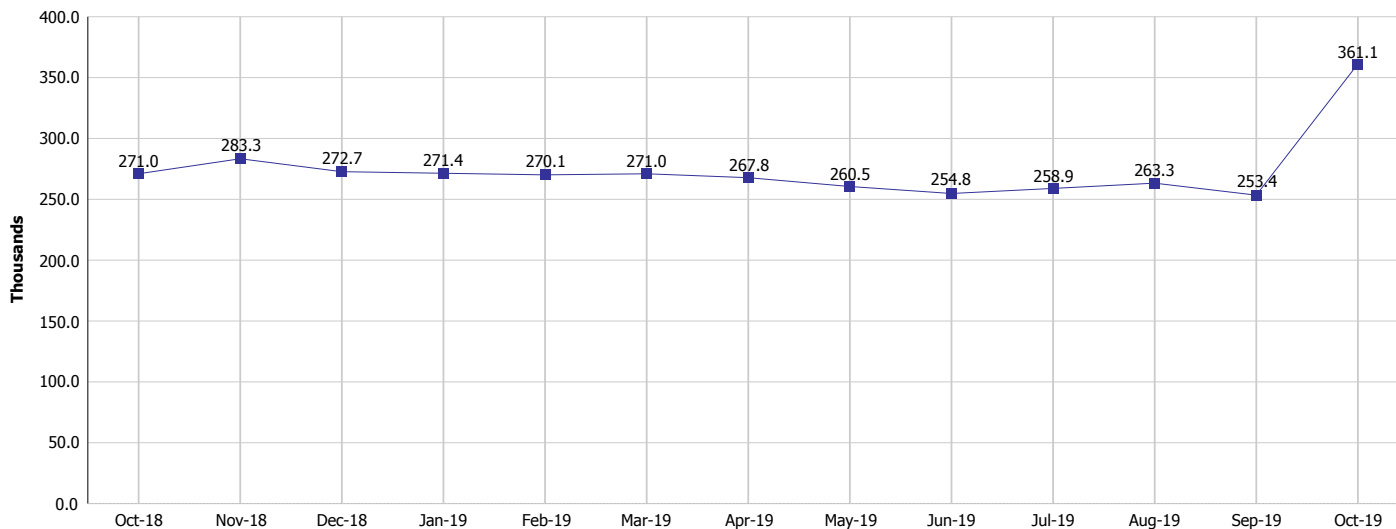
## Monthly Management Report

Reporting Month: October 2019

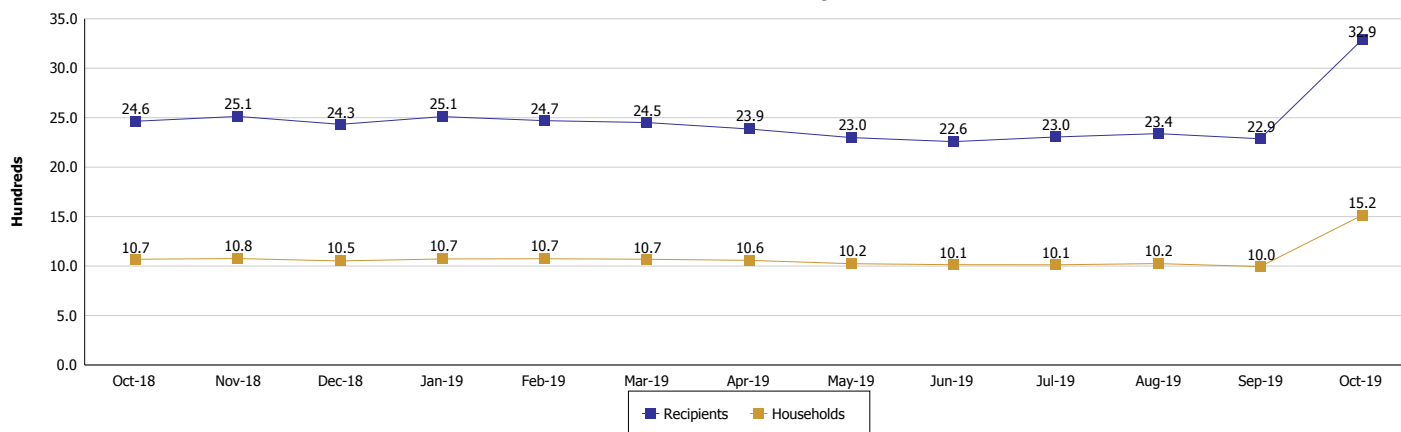
Location: Randolph County

### SUPPLEMENTAL NUTRITION ASSISTANCE PROGRAM (SNAP)

#### SNAP Issuance



#### SNAP Households and Recipients



#### Note:

All data July 2014 and following will be broken out according to the new DFR region structure effective July 1 2014.



## DIVISION OF FAMILY RESOURCES

### Monthly Management Report

Reporting Month: October 2019

Location: Randolph County

#### HIP 2.0 and SNAP

	October 2019	September 2019	October 2018	Annual Change
Total HIP 2.0 Members	1,674	1,744	1,807	-7.36%
HIP Members also SNAP Recipients	550	593	634	-13.25%
Percentage HIP Members SNAP Recipients	32.9%	34.0%	35.1%	-9.07%
HIP Members SNAP ABAWDs	13	10	19	-31.58%
Percentage HIP Members SNAP ABAWDs	0.8%	0.6%	1.1%	-9.07%

**Note:**

All data July 2014 and following will be broken out according to the new DFR region structure effective July 1 2014.



## DIVISION OF FAMILY RESOURCES

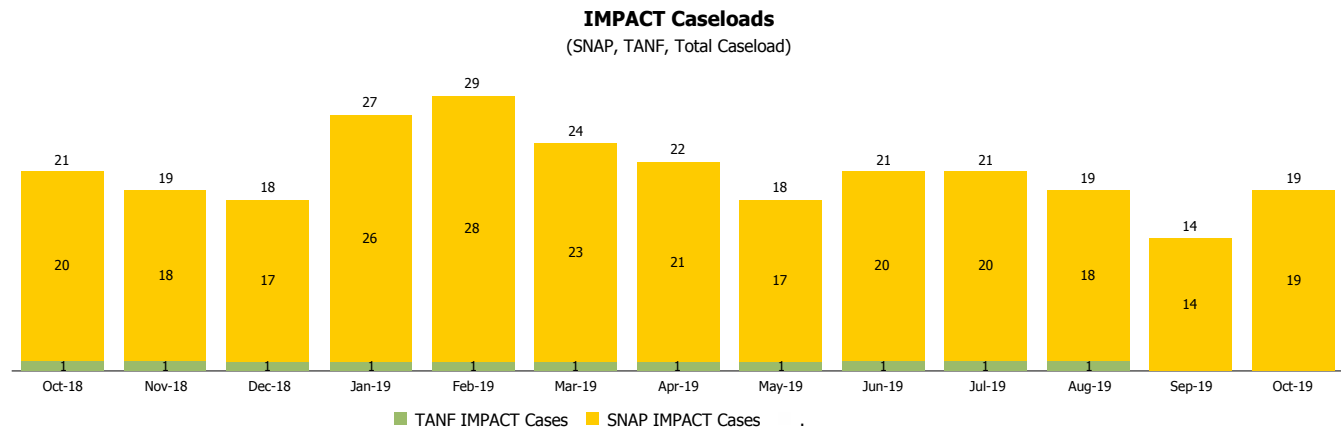
### Monthly Management Report

Reporting Month: October 2019

Location: Randolph County

#### INDIANA MANPOWER PLACEMENT AND COMPREHENSIVE TRAINING (IMPACT)

	October 2019	September 2019	October 2018	Annual Change
Number of IMPACT cases	19	14	21	-9.52%
Number of TANF IMPACT adults	0	0	1	-100.00%
Number of SNAP IMPACT Cases	19	14	20	-5.00%
Total number of adults employed	4	2	8	-50.00%
Number of TANF IMPACT adults newly employed (within past 30 days)	0	0	0	
Number of SNAP IMPACT adults employed	4	2	8	-50.00%
Total number of adults ineligible due to employment	16	15	21	-23.81%
Number of TANF adults ineligible due to employment	0	0	0	
Number of SNAP adults ineligible due to employment	16	15	21	-23.81%



**Note:**

All data July 2014 and following will be broken out according to the new DFR region structure effective July 1 2014.