



## DIVISION OF FAMILY RESOURCES

# Morgan County Monthly Management Report April 2018

### State of Indiana

Eric Holcomb  
Governor

### Family and Social Services Administration

Jennifer Walthall, M.D.  
Secretary

### Division of Family Resources

Adrienne Shields  
Director

For questions regarding data on this report contact:  
[office.Communications@fssa.IN.gov](mailto:office.Communications@fssa.IN.gov)



## State of Indiana

Published May 2018



## DIVISION OF FAMILY RESOURCES

### Monthly Management Report

Reporting Month: April 2018

Location: Morgan County

#### TEMPORARY ASSISTANCE FOR NEEDY FAMILIES (TANF)

Child-Only and One-Parent Families	Apr 30, 2018	March 2018	April 2017	Annual Change
Number of families receiving TANF Grants	56	58	56	0.00%
Total number of grant recipients	93	100	108	-13.89%
Number of adult grant recipients	8	10	8	0.00%
Number of child grant recipients	85	90	100	-15.00%
Total payments	\$9,122	\$9,222	\$10,230	-10.83%
Average payment per case	\$162.89	\$159.00	\$182.68	-10.83%
Average payment per recipient	\$98.09	\$92.22	\$94.72	3.55%
Number of cases with benefits reduced to zero	0	1	2	-100.00%
Number of recipients with benefits reduced to zero	0	3	7	-100.00%
Number of adult recipients with benefit reduced to zero	0	1	1	-100.00%
Number of child recipients with benefit reduced to zero	0	2	6	-100.00%

Two-Parent Families	Apr 30, 2018	March 2018	April 2017	Annual Change
Number of families receiving TANF Grants	0	1	1	-100.00%
Total number of grant recipients	0	2	2	-100.00%
Number of adult grant recipients	0	0	0	0%
Number of child grant recipients	0	2	2	-100.00%
Total payments	\$0	\$139	\$139	-100.00%
Average payment per case	\$0.00	\$139.00	\$139.00	-100.00%
Average payment per recipient	\$0.00	\$69.50	\$69.50	-100.00%
Number of cases with benefits reduced to zero	0	0	0	0%
Number of recipients with benefits reduced to zero	0	0	0	0%
Number of adult recipients with benefit reduced to zero	0	0	0	0%
Number of child recipients with benefit reduced to zero	0	0	0	0%

**Note:**

All data July 2014 and following will be broken out according to the new DFR region structure effective July 1 2014.

Source:



## DIVISION OF FAMILY RESOURCES

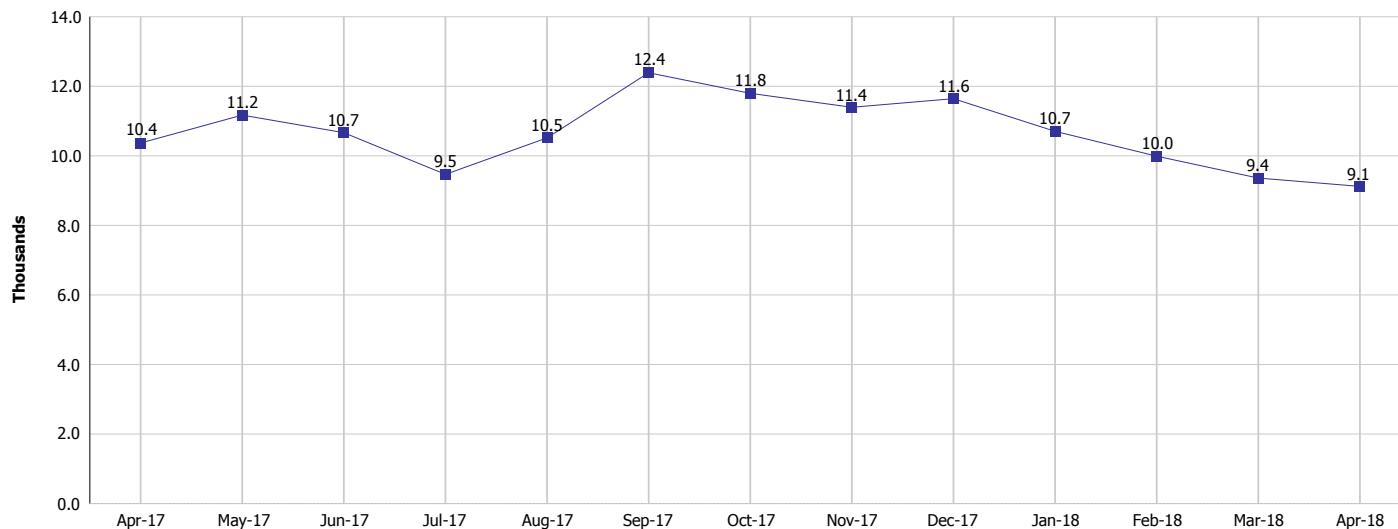
### Monthly Management Report

Reporting Month: April 2018

Location: Morgan County

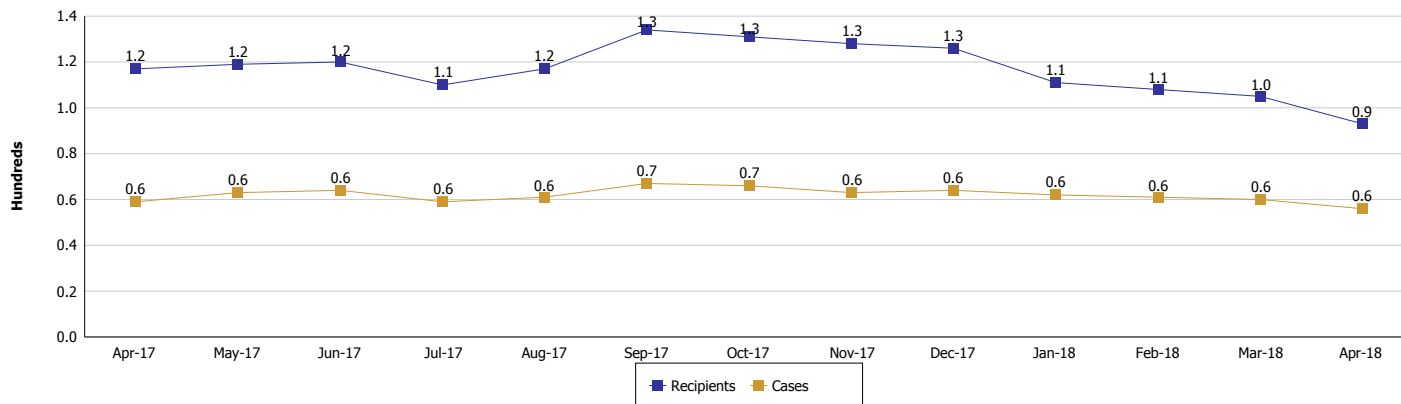
#### TEMPORARY ASSISTANCE FOR NEEDY FAMILIES (TANF)

#### TANF Regular And TANF Two-Parent Cash Assistance



#### TANF Cases and Recipients

(TANF Regular and TANF Two-Parent)



**Note:**

All data July 2014 and following will be broken out according to the new DFR region structure effective July 1 2014.



## DIVISION OF FAMILY RESOURCES

### Monthly Management Report

Reporting Month: April 2018

Location: Morgan County

#### SUPPLEMENTAL NUTRITION ASSISTANCE PROGRAM (SNAP)

	April 2018	March 2018	April 2017	Annual Change
Total issuance	\$644,796	\$660,633	\$677,682	-4.85%
Number of households receiving SNAP benefits	2,441	2,490	2,549	-4.24%
Number of recipients	5,571	5,693	5,803	-4.00%
Average issuance per household	\$264.15	\$265.31	\$265.86	-0.64%
Average issuance per recipient	\$115.74	\$116.04	\$116.78	-0.89%

**Note:**

All data July 2014 and following will be broken out according to the new DFR region structure effective July 1 2014.



## DIVISION OF FAMILY RESOURCES

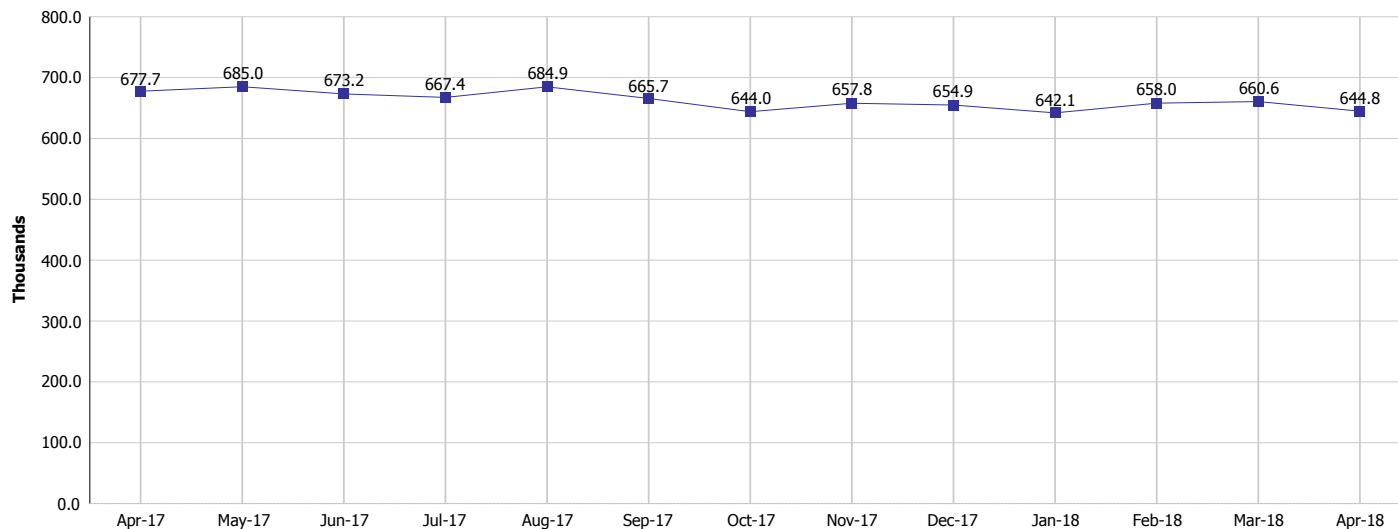
### Monthly Management Report

Reporting Month: April 2018

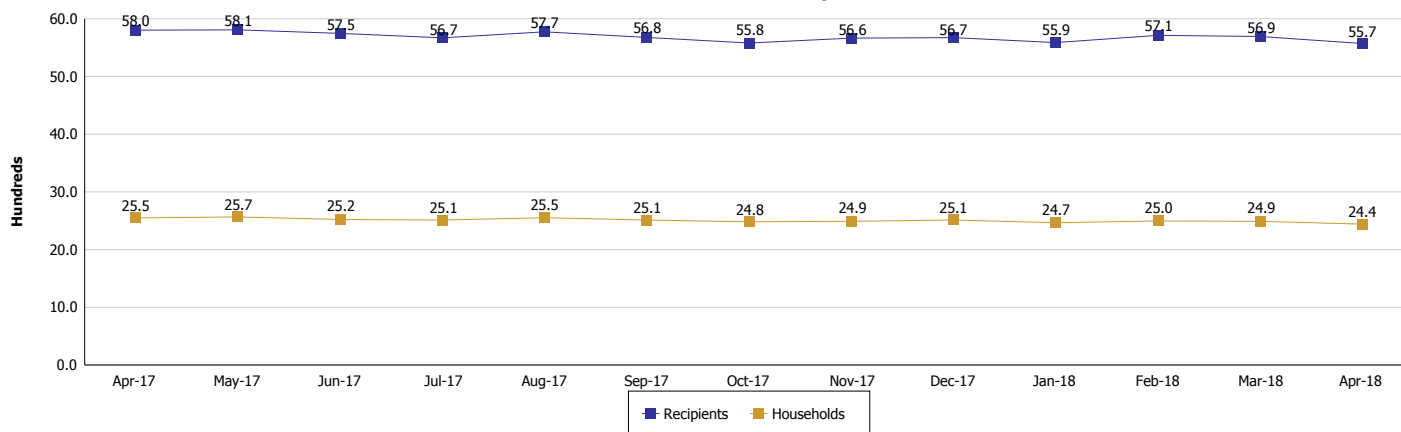
Location: Morgan County

#### SUPPLEMENTAL NUTRITION ASSISTANCE PROGRAM (SNAP)

#### SNAP Issuance



#### SNAP Households and Recipients



#### Note:

All data July 2014 and following will be broken out according to the new DFR region structure effective July 1 2014.



## DIVISION OF FAMILY RESOURCES

### Monthly Management Report

Reporting Month: April 2018

Location: Morgan County

#### HIP 2.0 and SNAP

	April 2018	March 2018	April 2017	Annual Change
Total HIP 2.0 Members	4,114	4,223	4,173	-1.41%
HIP Members also SNAP Recipients	1,448	1,478	1,496	-3.21%
Percentage HIP Members SNAP Recipients	35.2%	35.0%	35.8%	-1.95%
HIP Members SNAP ABAWDs	31	34	35	-11.43%
Percentage HIP Members SNAP ABAWDs	0.8%	0.8%	0.8%	-1.95%

**Note:**

All data July 2014 and following will be broken out according to the new DFR region structure effective July 1 2014.



## DIVISION OF FAMILY RESOURCES

### Monthly Management Report

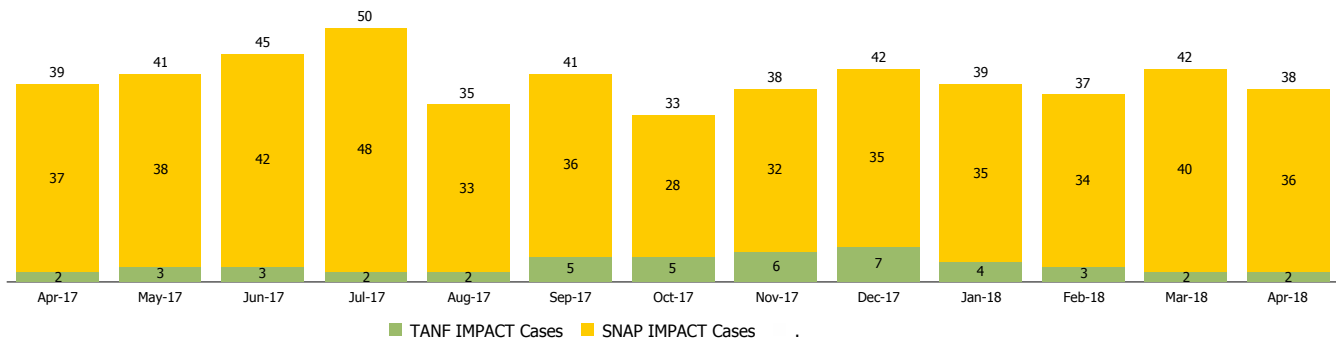
Reporting Month: April 2018

Location: Morgan County

#### INDIANA MANPOWER PLACEMENT AND COMPREHENSIVE TRAINING (IMPACT)

	April 2018	March 2018	April 2017	Annual Change
Number of IMPACT cases	38	42	39	-2.56%
Number of TANF IMPACT adults	2	2	2	0.00%
Number of SNAP IMPACT Cases	36	40	37	-2.70%
Total number of adults employed	12	7	10	20.00%
Number of TANF IMPACT adults newly employed (within past 30 days)	0	0	0	
Number of SNAP IMPACT adults employed	12	7	10	20.00%
Total number of adults ineligible due to employment	36	64	63	-42.86%
Number of TANF adults ineligible due to employment	0	0	0	
Number of SNAP adults ineligible due to employment	36	64	63	-42.86%

**IMPACT Caseloads**  
(SNAP, TANF, Total Caseload)



**Note:**

All data July 2014 and following will be broken out according to the new DFR region structure effective July 1 2014.