



## DIVISION OF FAMILY RESOURCES

# Monroe County Monthly Management Report April 2018

### State of Indiana

Eric Holcomb  
Governor

### Family and Social Services Administration

Jennifer Walthall, M.D.  
Secretary

### Division of Family Resources

Adrienne Shields  
Director

For questions regarding data on this report contact:  
[office.Communications@fssa.IN.gov](mailto:office.Communications@fssa.IN.gov)



## State of Indiana

Published May 2018



## DIVISION OF FAMILY RESOURCES

### Monthly Management Report

Reporting Month: April 2018

Location: Monroe County

#### TEMPORARY ASSISTANCE FOR NEEDY FAMILIES (TANF)

Child-Only and One-Parent Families	Apr 30, 2018	March 2018	April 2017	Annual Change
Number of families receiving TANF Grants	63	68	63	0.00%
Total number of grant recipients	130	142	132	-1.52%
Number of adult grant recipients	22	24	16	37.50%
Number of child grant recipients	108	118	116	-6.90%
Total payments	\$11,845	\$13,528	\$11,285	4.96%
Average payment per case	\$188.02	\$198.94	\$179.13	4.96%
Average payment per recipient	\$91.12	\$95.27	\$85.49	6.58%
Number of cases with benefits reduced to zero	0	0	1	-100.00%
Number of recipients with benefits reduced to zero	0	0	1	-100.00%
Number of adult recipients with benefit reduced to zero	0	0	0	0%
Number of child recipients with benefit reduced to zero	0	0	1	-100.00%

Two-Parent Families	Apr 30, 2018	March 2018	April 2017	Annual Change
Number of families receiving TANF Grants	4	5	5	-20.00%
Total number of grant recipients	11	14	13	-15.38%
Number of adult grant recipients	2	2	2	0.00%
Number of child grant recipients	9	12	11	-18.18%
Total payments	\$656	\$854	\$684	-4.09%
Average payment per case	\$164.00	\$170.80	\$136.80	19.88%
Average payment per recipient	\$59.64	\$61.00	\$52.62	13.34%
Number of cases with benefits reduced to zero	0	0	2	-100.00%
Number of recipients with benefits reduced to zero	0	0	4	-100.00%
Number of adult recipients with benefit reduced to zero	0	0	2	-100.00%
Number of child recipients with benefit reduced to zero	0	0	2	-100.00%

**Note:**

All data July 2014 and following will be broken out according to the new DFR region structure effective July 1 2014.

Source:



# DIVISION OF FAMILY RESOURCES

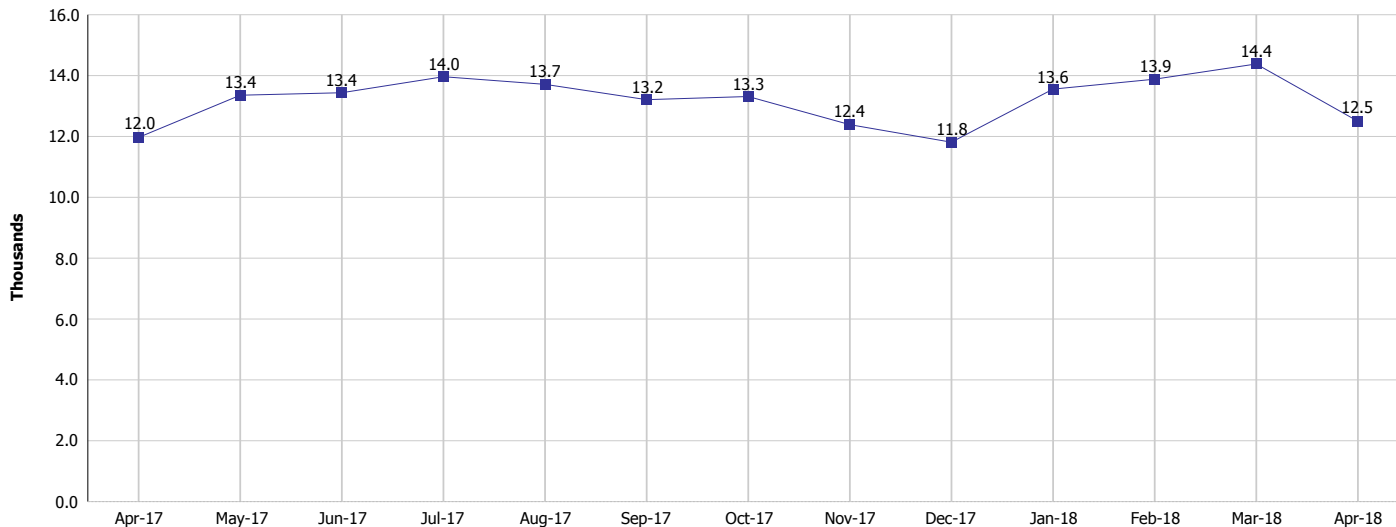
## Monthly Management Report

Reporting Month: April 2018

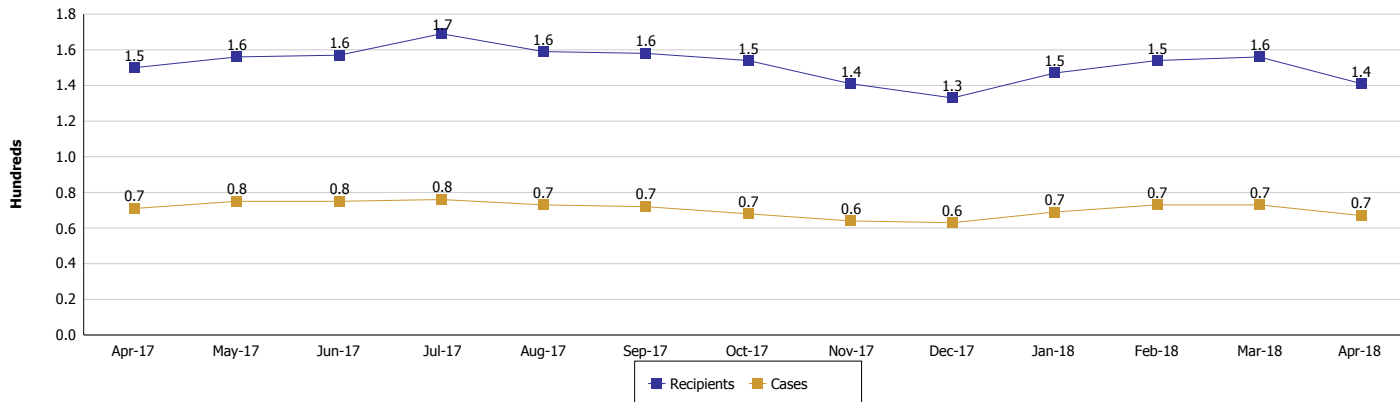
Location: Monroe County

### TEMPORARY ASSISTANCE FOR NEEDY FAMILIES (TANF)

#### TANF Regular And TANF Two-Parent Cash Assistance



#### TANF Cases and Recipients (TANF Regular and TANF Two-Parent)



#### Note:

All data July 2014 and following will be broken out according to the new DFR region structure effective July 1 2014.



## DIVISION OF FAMILY RESOURCES

### Monthly Management Report

Reporting Month: April 2018

Location: Monroe County

#### SUPPLEMENTAL NUTRITION ASSISTANCE PROGRAM (SNAP)

	April 2018	March 2018	April 2017	Annual Change
Total issuance	\$905,807	\$930,046	\$948,083	-4.46%
Number of households receiving SNAP benefits	3,865	3,968	4,064	-4.90%
Number of recipients	7,712	7,927	8,147	-5.34%
Average issuance per household	\$234.36	\$234.39	\$233.29	0.46%
Average issuance per recipient	\$117.45	\$117.33	\$116.37	0.93%

**Note:**

All data July 2014 and following will be broken out according to the new DFR region structure effective July 1 2014.



# DIVISION OF FAMILY RESOURCES

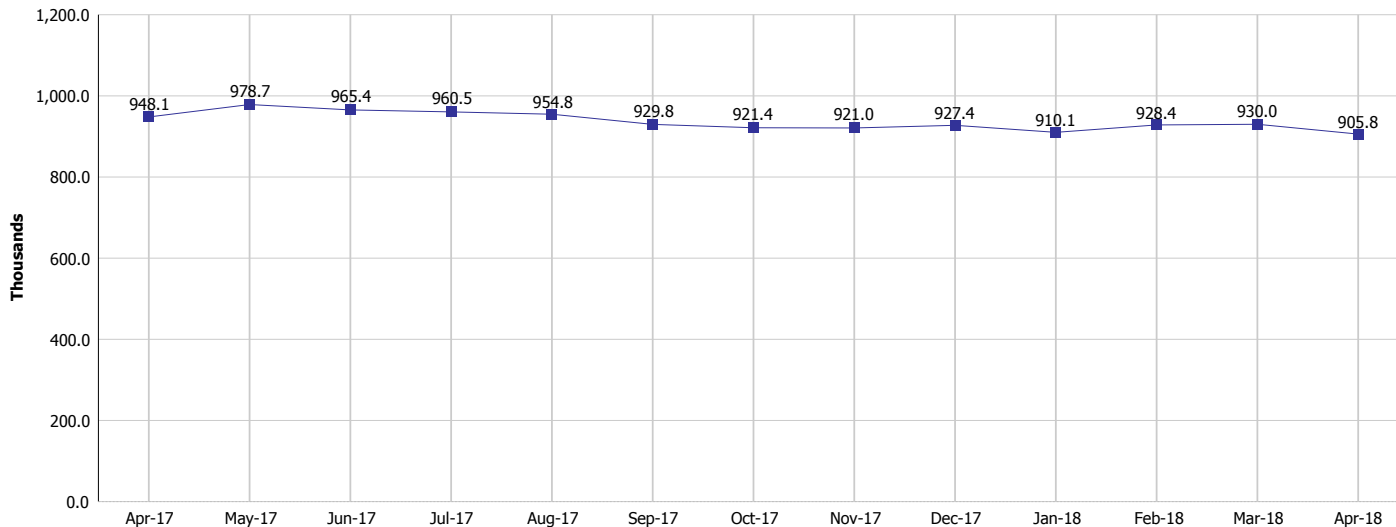
## Monthly Management Report

Reporting Month: April 2018

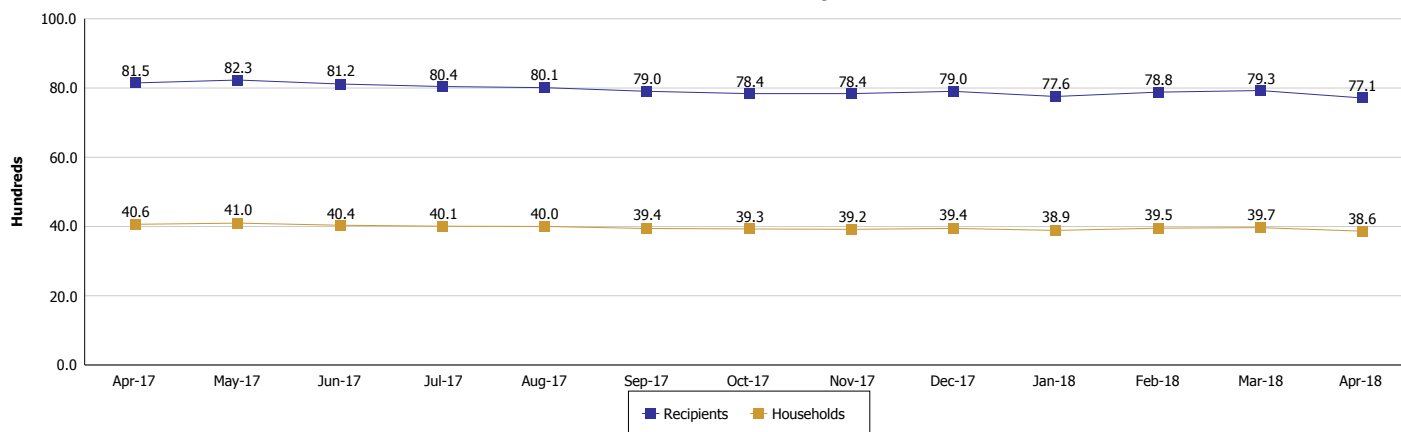
Location: Monroe County

### SUPPLEMENTAL NUTRITION ASSISTANCE PROGRAM (SNAP)

#### SNAP Issuance



#### SNAP Households and Recipients



#### Note:

All data July 2014 and following will be broken out according to the new DFR region structure effective July 1 2014.



## DIVISION OF FAMILY RESOURCES

### Monthly Management Report

Reporting Month: April 2018

Location: Monroe County

#### HIP 2.0 and SNAP

	April 2018	March 2018	April 2017	Annual Change
Total HIP 2.0 Members	7,837	7,976	7,968	-1.64%
HIP Members also SNAP Recipients	2,115	2,148	2,243	-5.71%
Percentage HIP Members SNAP Recipients	27.0%	26.9%	28.2%	-2.81%
HIP Members SNAP ABAWDs	56	53	86	-34.88%
Percentage HIP Members SNAP ABAWDs	0.7%	0.7%	1.1%	-2.81%

**Note:**

All data July 2014 and following will be broken out according to the new DFR region structure effective July 1 2014.



## DIVISION OF FAMILY RESOURCES

### Monthly Management Report

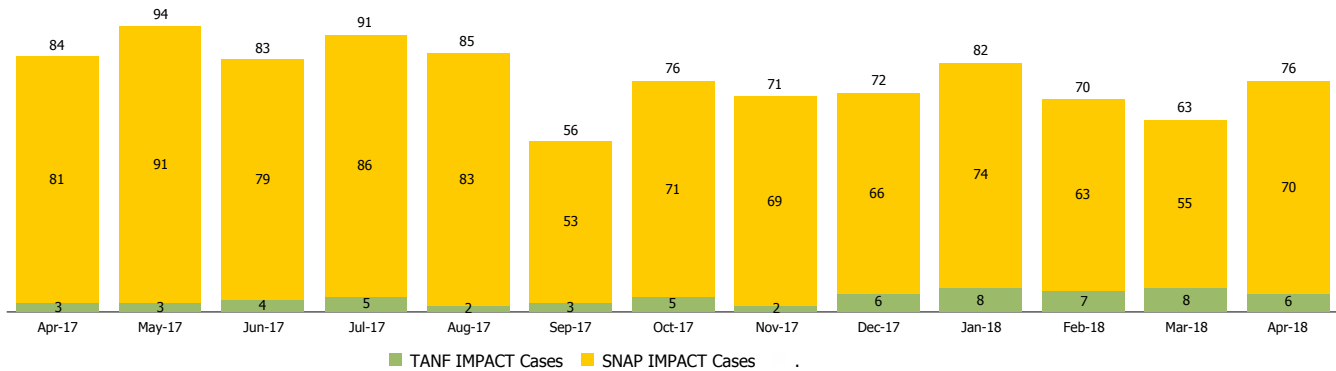
Reporting Month: April 2018

Location: Monroe County

#### INDIANA MANPOWER PLACEMENT AND COMPREHENSIVE TRAINING (IMPACT)

	April 2018	March 2018	April 2017	Annual Change
Number of IMPACT cases	76	63	84	-9.52%
Number of TANF IMPACT adults	6	8	3	100.00%
Number of SNAP IMPACT Cases	70	55	81	-13.58%
Total number of adults employed	16	11	19	-15.79%
Number of TANF IMPACT adults newly employed (within past 30 days)	1	2	0	
Number of SNAP IMPACT adults employed	15	9	19	-21.05%
Total number of adults ineligible due to employment	81	49	84	-3.57%
Number of TANF adults ineligible due to employment	0	0	0	
Number of SNAP adults ineligible due to employment	81	49	84	-3.57%

**IMPACT Caseloads**  
(SNAP, TANF, Total Caseload)



**Note:**

All data July 2014 and following will be broken out according to the new DFR region structure effective July 1 2014.