



## DIVISION OF FAMILY RESOURCES

# Martin County Monthly Management Report October 2019

### State of Indiana

Eric Holcomb  
Governor

### Family and Social Services Administration

Jennifer Walthall, M.D.  
Secretary

### Division of Family Resources

Adrienne Shields  
Director

For questions regarding data on this report contact:  
[office.Communications@fssa.IN.gov](mailto:office.Communications@fssa.IN.gov)



## State of Indiana

Published November 2019



## DIVISION OF FAMILY RESOURCES

### Monthly Management Report

Reporting Month: October 2019

Location: Martin County

#### TEMPORARY ASSISTANCE FOR NEEDY FAMILIES (TANF)

Child-Only and One-Parent Families	Oct 31, 2019	September 2019	October 2018	Annual Change
Number of families receiving TANF Grants	8	12	12	-33.33%
Total number of grant recipients	14	20	19	-26.32%
Number of adult grant recipients	1	1	2	-50.00%
Number of child grant recipients	13	19	17	-23.53%
Total payments	\$1,406	\$2,079	\$2,052	-31.48%
Average payment per case	\$175.75	\$173.25	\$171.00	2.78%
Average payment per recipient	\$100.43	\$103.95	\$108.00	-7.01%
Number of cases with benefits reduced to zero	0	0	0	0%
Number of recipients with benefits reduced to zero	0	0	0	0%
Number of adult recipients with benefit reduced to zero	0	0	0	0%
Number of child recipients with benefit reduced to zero	0	0	0	0%

Two-Parent Families	Oct 31, 2019	September 2019	October 2018	Annual Change
Number of families receiving TANF Grants	0	0	1	-100.00%
Total number of grant recipients	0	0	4	-100.00%
Number of adult grant recipients	0	0	2	-100.00%
Number of child grant recipients	0	0	2	-100.00%
Total payments	\$0	\$0	\$198	-100.00%
Average payment per case	\$0.00	\$0.00	\$198.00	-100.00%
Average payment per recipient	\$0.00	\$0.00	\$49.50	-100.00%
Number of cases with benefits reduced to zero	0	0	0	0%
Number of recipients with benefits reduced to zero	0	0	0	0%
Number of adult recipients with benefit reduced to zero	0	0	0	0%
Number of child recipients with benefit reduced to zero	0	0	0	0%

**Note:**

All data July 2014 and following will be broken out according to the new DFR region structure effective July 1 2014.

Source:



## DIVISION OF FAMILY RESOURCES

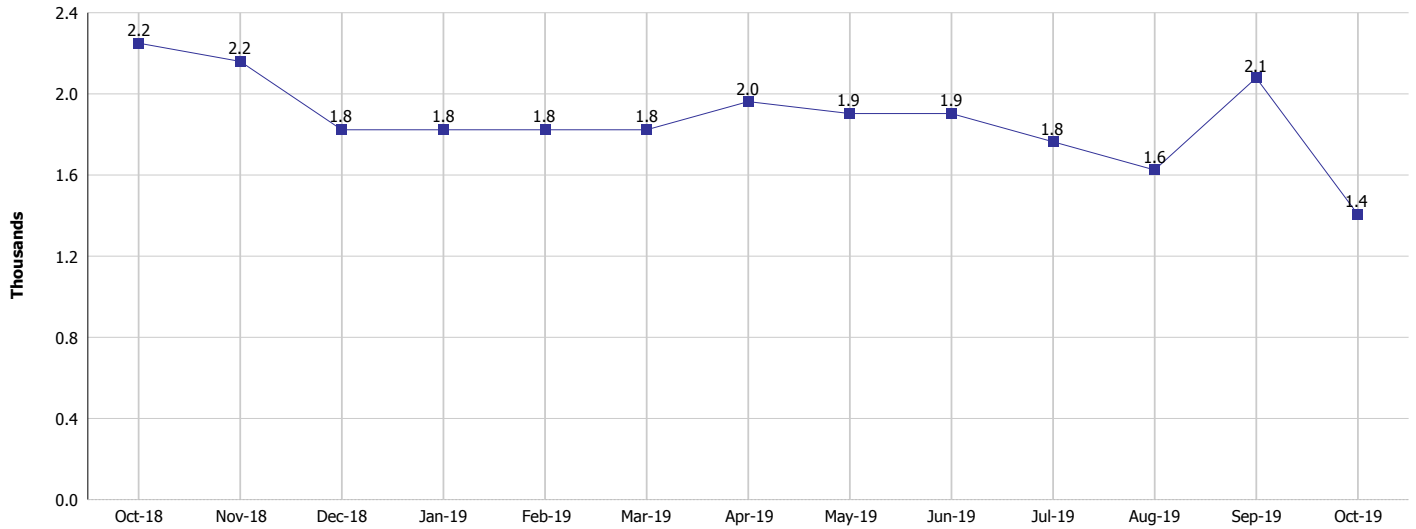
### Monthly Management Report

Reporting Month: October 2019

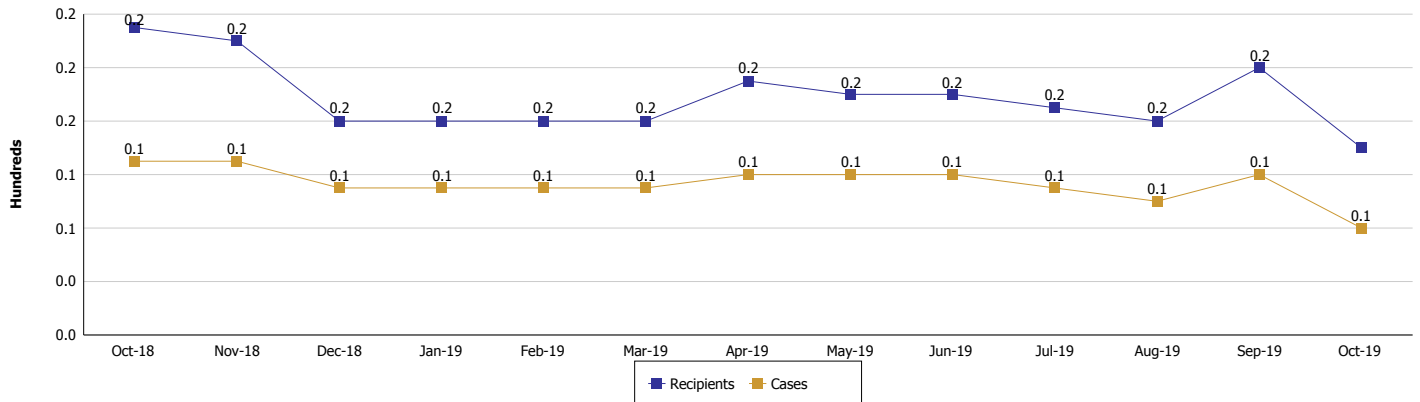
Location: Martin County

#### TEMPORARY ASSISTANCE FOR NEEDY FAMILIES (TANF)

#### TANF Regular And TANF Two-Parent Cash Assistance



#### TANF Cases and Recipients (TANF Regular and TANF Two-Parent)



**Note:**

All data July 2014 and following will be broken out according to the new DFR region structure effective July 1 2014.



## DIVISION OF FAMILY RESOURCES

### Monthly Management Report

Reporting Month: October 2019

Location: Martin County

#### SUPPLEMENTAL NUTRITION ASSISTANCE PROGRAM (SNAP)

	October 2019	September 2019	October 2018	Annual Change
Total issuance	\$75,420	\$75,064	\$78,644	-4.10%
Number of households receiving SNAP benefits	329	320	323	1.86%
Number of recipients	668	642	695	-3.88%
Average issuance per household	\$229.24	\$234.58	\$243.48	-5.85%
Average issuance per recipient	\$112.9	\$116.92	\$113.16	-0.23%

**Note:**

All data July 2014 and following will be broken out according to the new DFR region structure effective July 1 2014.



# DIVISION OF FAMILY RESOURCES

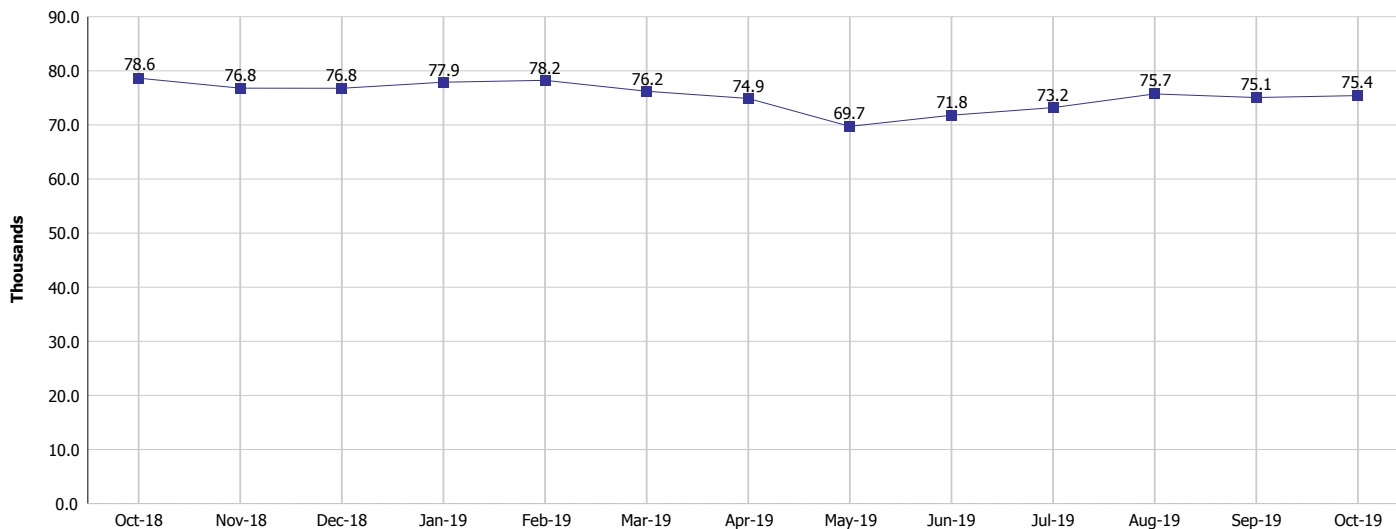
## Monthly Management Report

Reporting Month: October 2019

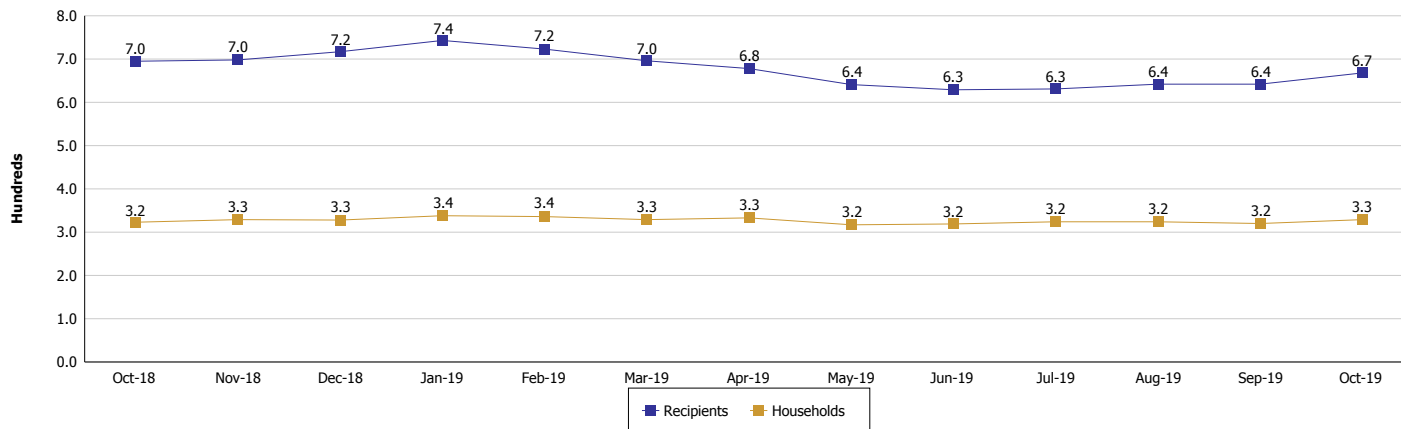
Location: Martin County

### SUPPLEMENTAL NUTRITION ASSISTANCE PROGRAM (SNAP)

#### SNAP Issuance



#### SNAP Households and Recipients



**Note:**

All data July 2014 and following will be broken out according to the new DFR region structure effective July 1 2014.



## DIVISION OF FAMILY RESOURCES

### Monthly Management Report

Reporting Month: October 2019

Location: Martin County

#### HIP 2.0 and SNAP

	October 2019	September 2019	October 2018	Annual Change
Total HIP 2.0 Members	614	613	580	5.86%
HIP Members also SNAP Recipients	177	171	172	2.91%
Percentage HIP Members SNAP Recipients	28.8%	27.9%	29.7%	5.31%
HIP Members SNAP ABAWDs	2	2	1	100.00%
Percentage HIP Members SNAP ABAWDs	0.3%	0.3%	0.2%	5.31%

**Note:**

All data July 2014 and following will be broken out according to the new DFR region structure effective July 1 2014.



**DIVISION OF FAMILY RESOURCES**

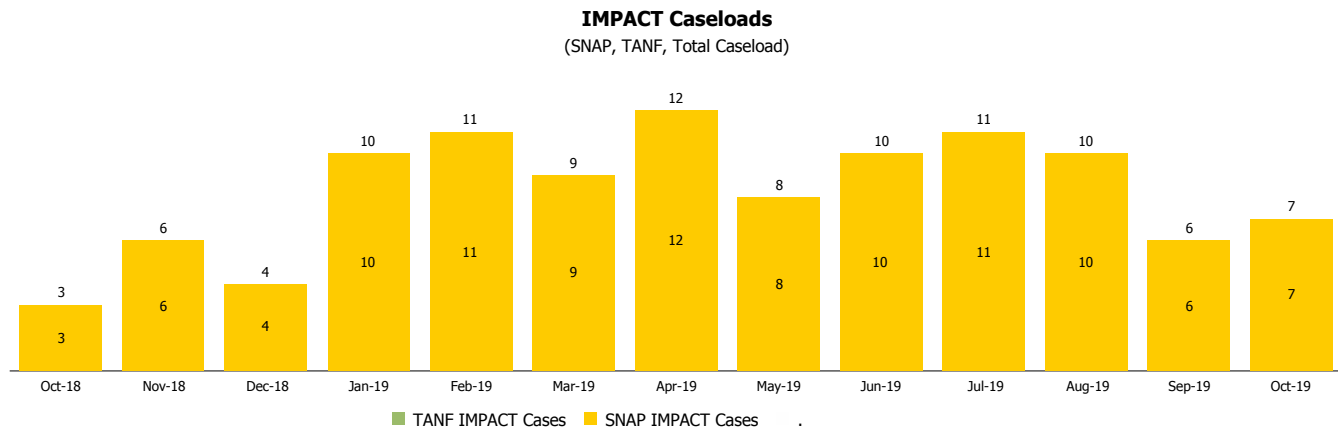
**Monthly Management Report**

Reporting Month: October 2019

Location: Martin County

**INDIANA MANPOWER PLACEMENT AND COMPREHENSIVE TRAINING (IMPACT)**

	October 2019	September 2019	October 2018	Annual Change
Number of IMPACT cases	7	6	3	133.33%
Number of TANF IMPACT adults	0	0	0	
Number of SNAP IMPACT Cases	7	6	3	133.33%
Total number of adults employed	1	1	1	0.00%
Number of TANF IMPACT adults newly employed (within past 30 days)	0	0	0	
Number of SNAP IMPACT adults employed	1	1	1	0.00%
Total number of adults ineligible due to employment	9	5	8	12.50%
Number of TANF adults ineligible due to employment	0	0	0	
Number of SNAP adults ineligible due to employment	9	5	8	12.50%



**Note:**

All data July 2014 and following will be broken out according to the new DFR region structure effective July 1 2014.