



DIVISION OF FAMILY RESOURCES

Marion County Monthly Management Report October 2019

State of Indiana

Eric Holcomb
Governor

Family and Social Services Administration

Jennifer Walthall, M.D.
Secretary

Division of Family Resources

Adrienne Shields
Director

For questions regarding data on this report contact:
office.Communications@fssa.IN.gov



State of Indiana

Published November 2019



DIVISION OF FAMILY RESOURCES

Monthly Management Report

Reporting Month: October 2019

Location: Marion County

TEMPORARY ASSISTANCE FOR NEEDY FAMILIES (TANF)

Child-Only and One-Parent Families	Oct 31, 2019	September 2019	October 2018	Annual Change
Number of families receiving TANF Grants	1,017	1,020	1,177	-13.59%
Total number of grant recipients	2,396	2,363	2,783	-13.91%
Number of adult grant recipients	456	452	538	-15.24%
Number of child grant recipients	1,940	1,911	2,245	-13.59%
Total payments	\$209,012	\$203,855	\$241,548	-13.47%
Average payment per case	\$205.52	\$199.86	\$205.22	0.14%
Average payment per recipient	\$87.23	\$86.27	\$86.79	0.51%
Number of cases with benefits reduced to zero	15	17	53	-71.70%
Number of recipients with benefits reduced to zero	34	44	151	-77.48%
Number of adult recipients with benefit reduced to zero	9	12	41	-78.05%
Number of child recipients with benefit reduced to zero	25	32	110	-77.27%

Two-Parent Families	Oct 31, 2019	September 2019	October 2018	Annual Change
Number of families receiving TANF Grants	64	65	46	39.13%
Total number of grant recipients	266	267	187	42.25%
Number of adult grant recipients	113	116	78	44.87%
Number of child grant recipients	153	151	109	40.37%
Total payments	\$16,872	\$17,108	\$8,795	91.84%
Average payment per case	\$263.62	\$263.20	\$191.20	37.88%
Average payment per recipient	\$63.43	\$64.07	\$47.03	34.86%
Number of cases with benefits reduced to zero	11	2	3	266.67%
Number of recipients with benefits reduced to zero	15	12	15	0.00%
Number of adult recipients with benefit reduced to zero	4	4	6	-33.33%
Number of child recipients with benefit reduced to zero	11	8	9	22.22%

Note:

All data July 2014 and following will be broken out according to the new DFR region structure effective July 1 2014.

Source:



DIVISION OF FAMILY RESOURCES

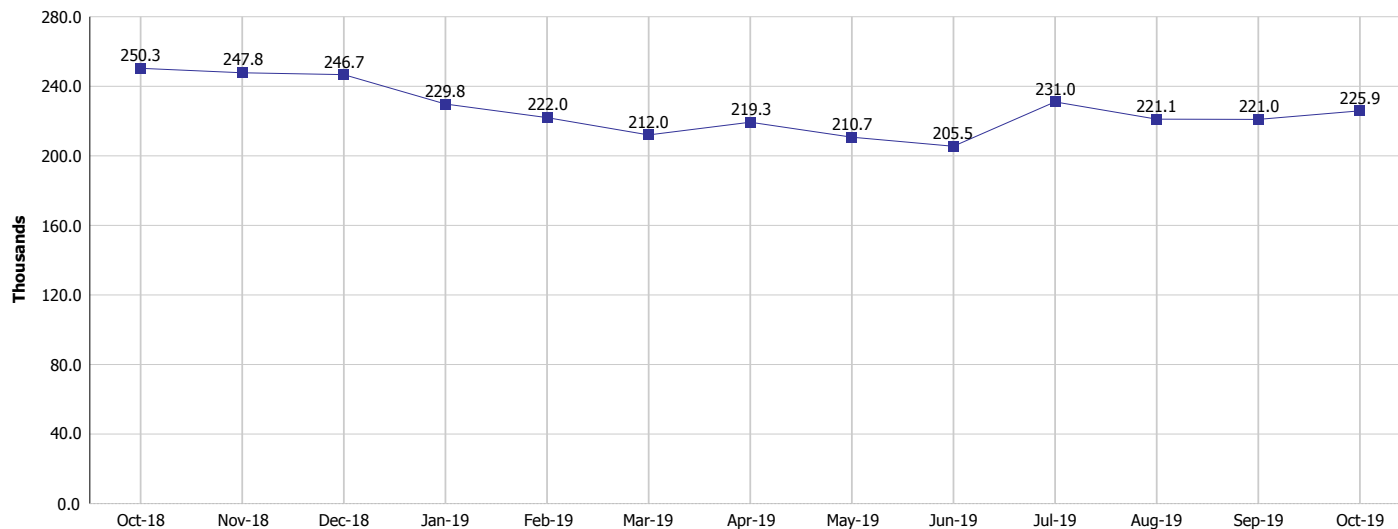
Monthly Management Report

Reporting Month: October 2019

Location: Marion County

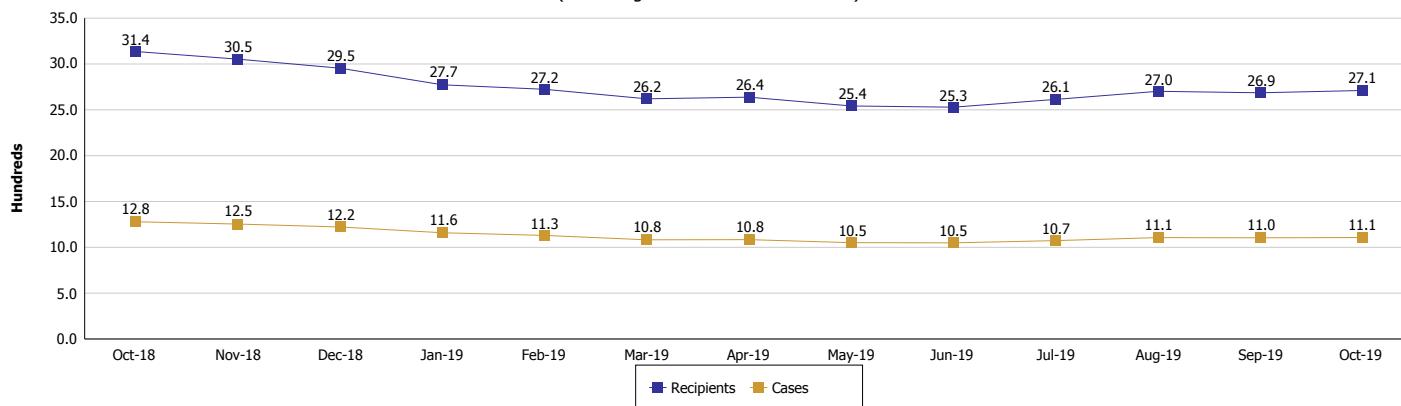
TEMPORARY ASSISTANCE FOR NEEDY FAMILIES (TANF)

TANF Regular And TANF Two-Parent Cash Assistance



TANF Cases and Recipients

(TANF Regular and TANF Two-Parent)



Note:

All data July 2014 and following will be broken out according to the new DFR region structure effective July 1 2014.



DIVISION OF FAMILY RESOURCES

Monthly Management Report

Reporting Month: October 2019

Location: Marion County

SUPPLEMENTAL NUTRITION ASSISTANCE PROGRAM (SNAP)

	October 2019	September 2019	October 2018	Annual Change
Total issuance	\$16,074,693	\$15,799,279	\$16,981,328	-5.34%
Number of households receiving SNAP benefits	56,246	56,021	59,620	-5.66%
Number of recipients	127,656	127,381	135,220	-5.59%
Average issuance per household	\$285.79	\$282.02	\$284.83	0.34%
Average issuance per recipient	\$125.92	\$124.03	\$125.58	0.27%

Note:

All data July 2014 and following will be broken out according to the new DFR region structure effective July 1 2014.



DIVISION OF FAMILY RESOURCES

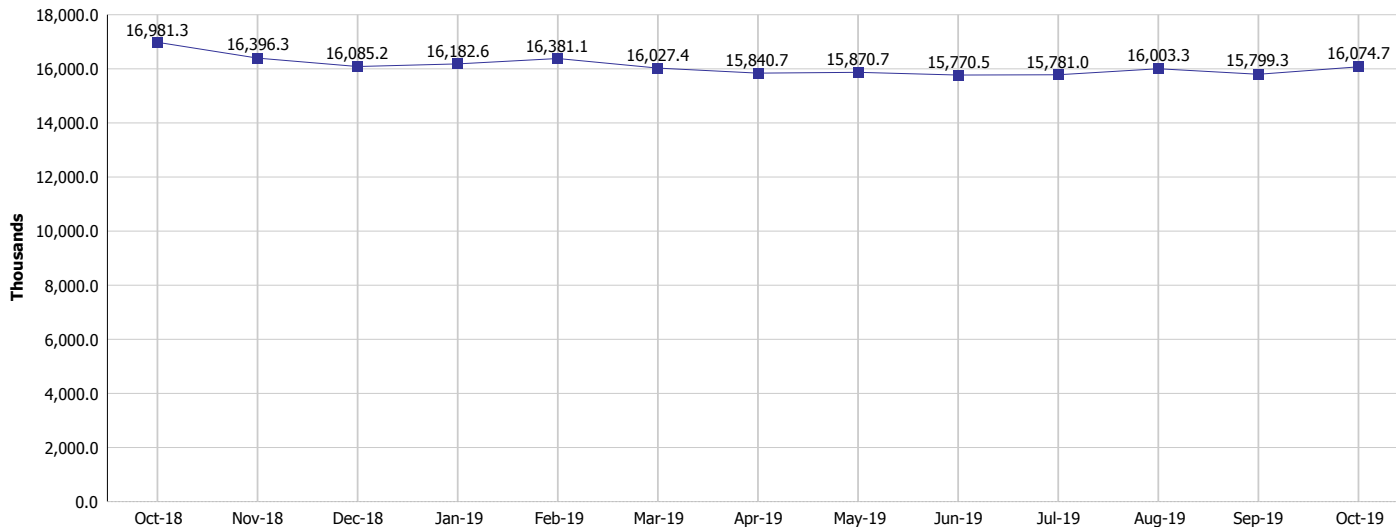
Monthly Management Report

Reporting Month: October 2019

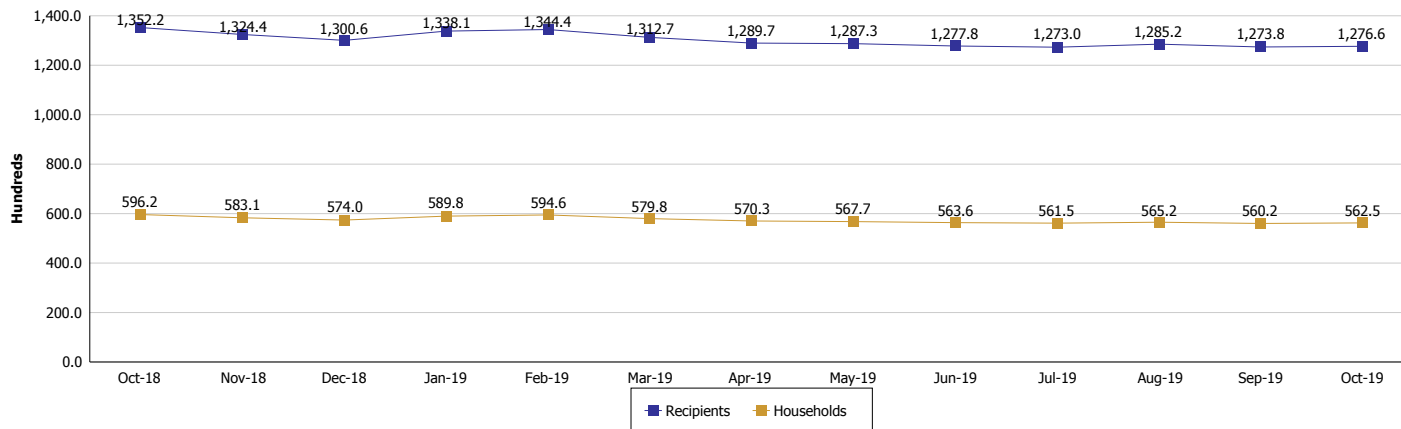
Location: Marion County

SUPPLEMENTAL NUTRITION ASSISTANCE PROGRAM (SNAP)

SNAP Issuance



SNAP Households and Recipients



Note:

All data July 2014 and following will be broken out according to the new DFR region structure effective July 1 2014.



DIVISION OF FAMILY RESOURCES

Monthly Management Report

Reporting Month: October 2019

Location: Marion County

HIP 2.0 and SNAP

	October 2019	September 2019	October 2018	Annual Change
Total HIP 2.0 Members	97,733	96,649	93,989	3.98%
HIP Members also SNAP Recipients	29,623	29,503	30,055	-1.44%
Percentage HIP Members SNAP Recipients	30.3%	30.5%	32.0%	2.38%
HIP Members SNAP ABAWDs	995	1,063	1,327	-25.02%
Percentage HIP Members SNAP ABAWDs	1.0%	1.1%	1.4%	2.38%

Note:

All data July 2014 and following will be broken out according to the new DFR region structure effective July 1 2014.



DIVISION OF FAMILY RESOURCES

Monthly Management Report

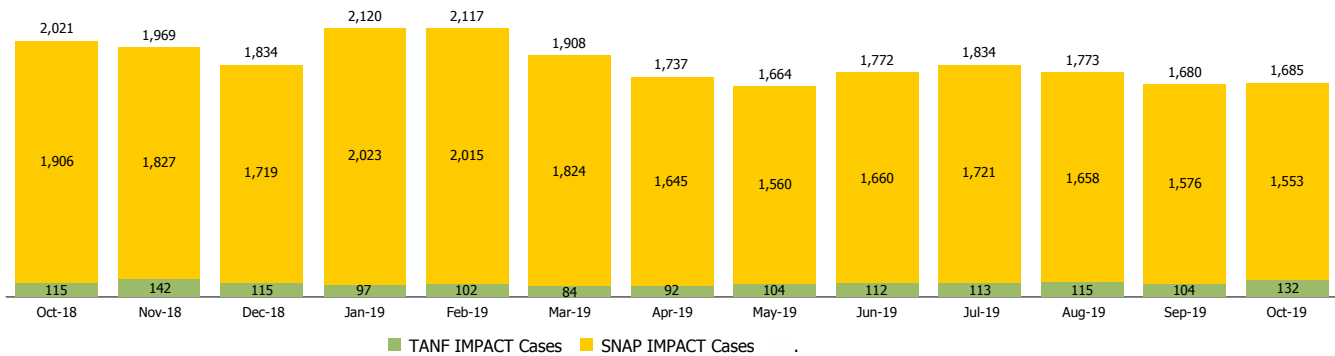
Reporting Month: October 2019

Location: Marion County

INDIANA MANPOWER PLACEMENT AND COMPREHENSIVE TRAINING (IMPACT)

	October 2019	September 2019	October 2018	Annual Change
Number of IMPACT cases	1,685	1,680	2,021	-16.63%
Number of TANF IMPACT adults	132	104	115	14.78%
Number of SNAP IMPACT Cases	1,553	1,576	1,906	-18.52%
Total number of adults employed	351	254	411	-14.60%
Number of TANF IMPACT adults newly employed (within past 30 days)	37	14	45	-17.78%
Number of SNAP IMPACT adults employed	314	240	366	-14.21%
Total number of adults ineligible due to employment	1,407	1,069	1,379	2.03%
Number of TANF adults ineligible due to employment	11	7	2	450.00%
Number of SNAP adults ineligible due to employment	1,396	1,062	1,377	1.38%

IMPACT Caseloads
(SNAP, TANF, Total Caseload)



Note:

All data July 2014 and following will be broken out according to the new DFR region structure effective July 1 2014.