



## DIVISION OF FAMILY RESOURCES

# Knox County Monthly Management Report October 2019

### State of Indiana

Eric Holcomb  
Governor

### Family and Social Services Administration

Jennifer Walthall, M.D.  
Secretary

### Division of Family Resources

Adrienne Shields  
Director

For questions regarding data on this report contact:  
[office.Communications@fssa.IN.gov](mailto:office.Communications@fssa.IN.gov)



## State of Indiana

Published November 2019



## DIVISION OF FAMILY RESOURCES

### Monthly Management Report

Reporting Month: October 2019

Location: Knox County

#### TEMPORARY ASSISTANCE FOR NEEDY FAMILIES (TANF)

Child-Only and One-Parent Families	Oct 31, 2019	September 2019	October 2018	Annual Change
Number of families receiving TANF Grants	41	42	39	5.13%
Total number of grant recipients	91	96	82	10.98%
Number of adult grant recipients	6	9	5	20.00%
Number of child grant recipients	85	87	77	10.39%
Total payments	\$8,230	\$8,485	\$7,759	6.07%
Average payment per case	\$200.73	\$202.02	\$198.95	0.90%
Average payment per recipient	\$90.44	\$88.39	\$94.62	-4.42%
Number of cases with benefits reduced to zero	0	0	3	-100.00%
Number of recipients with benefits reduced to zero	0	0	6	-100.00%
Number of adult recipients with benefit reduced to zero	0	0	0	0%
Number of child recipients with benefit reduced to zero	0	0	6	-100.00%

Two-Parent Families	Oct 31, 2019	September 2019	October 2018	Annual Change
Number of families receiving TANF Grants	1	1	1	0.00%
Total number of grant recipients	1	1	1	0.00%
Number of adult grant recipients	0	0	0	0%
Number of child grant recipients	1	1	1	0.00%
Total payments	\$139	\$139	\$139	0.00%
Average payment per case	\$139.00	\$139.00	\$139.00	0.00%
Average payment per recipient	\$139.00	\$139.00	\$139.00	0.00%
Number of cases with benefits reduced to zero	0	0	0	0%
Number of recipients with benefits reduced to zero	0	0	0	0%
Number of adult recipients with benefit reduced to zero	0	0	0	0%
Number of child recipients with benefit reduced to zero	0	0	0	0%

**Note:**

All data July 2014 and following will be broken out according to the new DFR region structure effective July 1 2014.

Source:



# DIVISION OF FAMILY RESOURCES

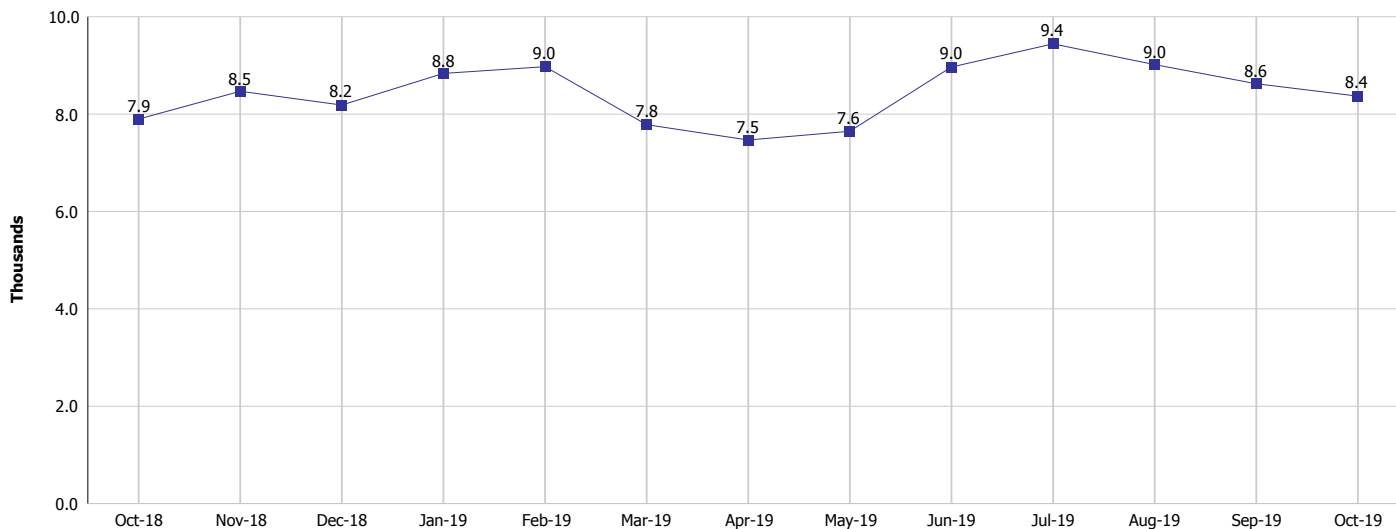
## Monthly Management Report

Reporting Month: October 2019

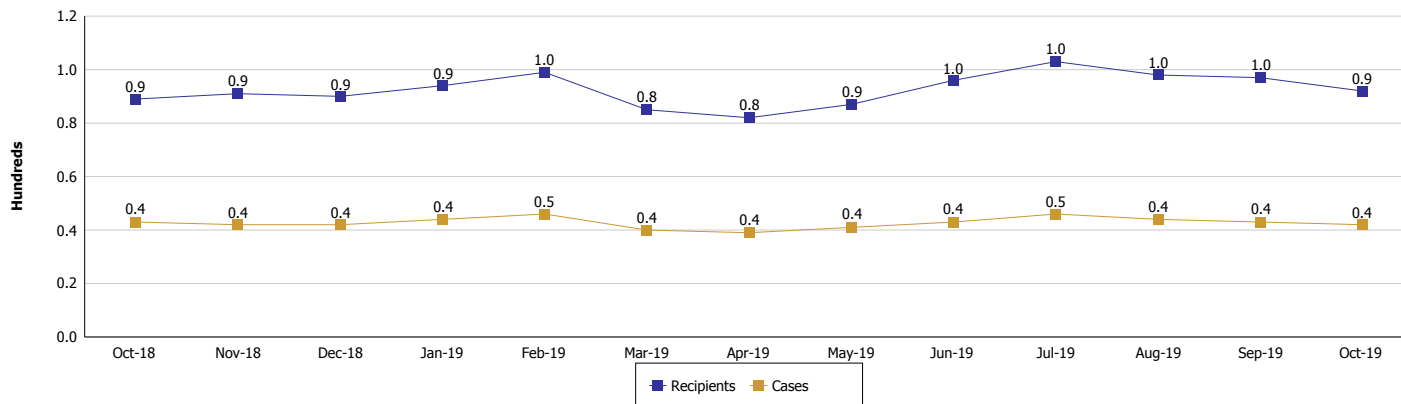
Location: Knox County

### TEMPORARY ASSISTANCE FOR NEEDY FAMILIES (TANF)

#### TANF Regular And TANF Two-Parent Cash Assistance



#### TANF Cases and Recipients (TANF Regular and TANF Two-Parent)



#### Note:

All data July 2014 and following will be broken out according to the new DFR region structure effective July 1 2014.



## DIVISION OF FAMILY RESOURCES

### Monthly Management Report

Reporting Month: October 2019

Location: Knox County

#### SUPPLEMENTAL NUTRITION ASSISTANCE PROGRAM (SNAP)

	October 2019	September 2019	October 2018	Annual Change
Total issuance	\$426,901	\$416,293	\$441,649	-3.34%
Number of households receiving SNAP benefits	1,818	1,789	1,858	-2.15%
Number of recipients	3,889	3,846	4,000	-2.78%
Average issuance per household	\$234.82	\$232.7	\$237.7	-1.21%
Average issuance per recipient	\$109.77	\$108.24	\$110.41	-0.58%

**Note:**

All data July 2014 and following will be broken out according to the new DFR region structure effective July 1 2014.



# DIVISION OF FAMILY RESOURCES

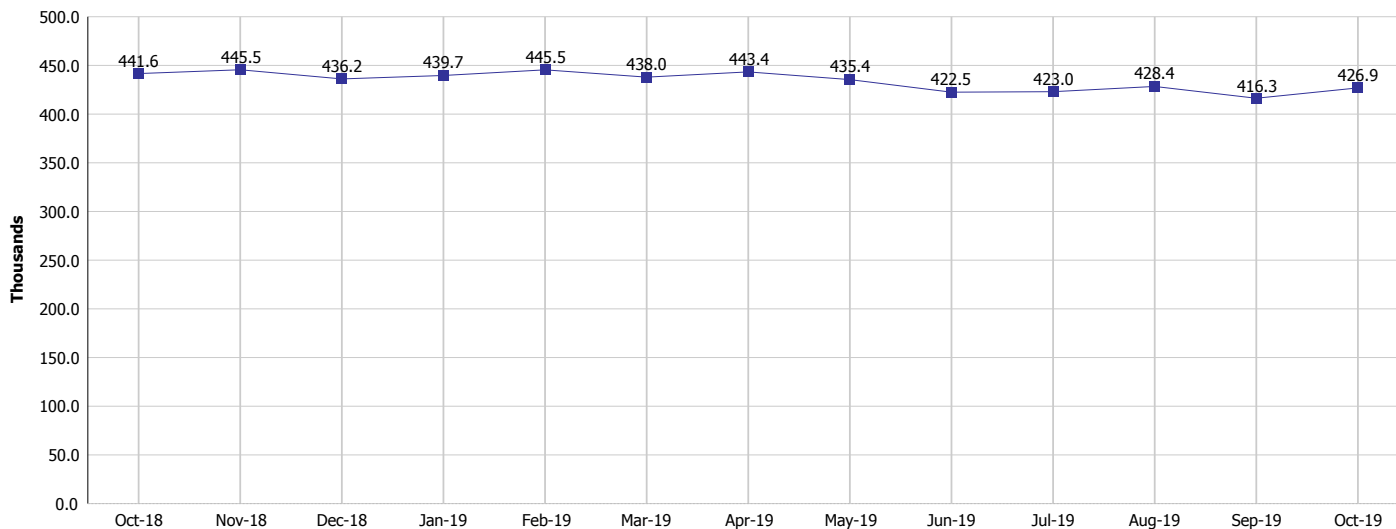
## Monthly Management Report

Reporting Month: October 2019

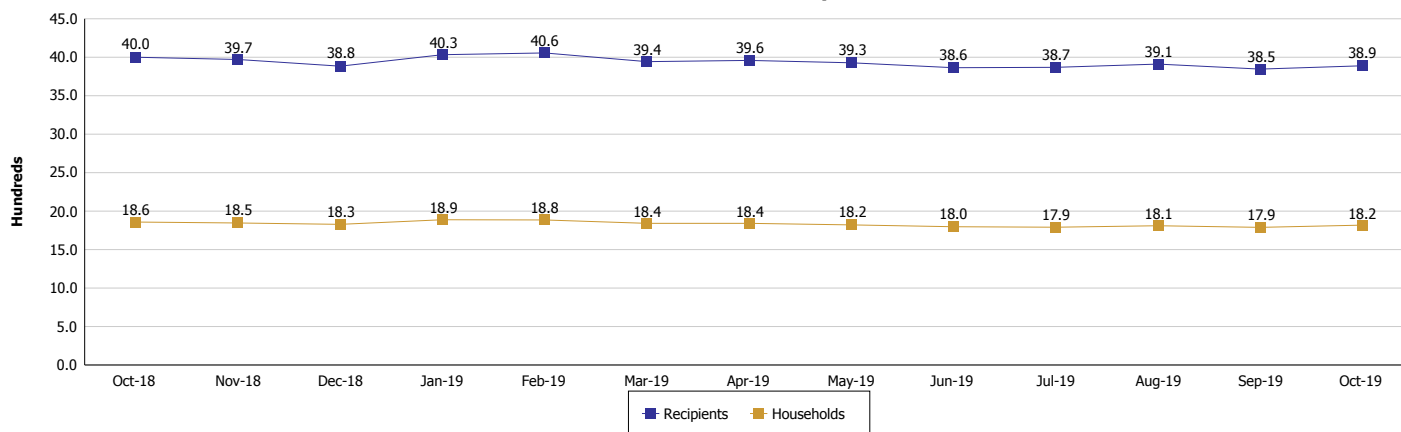
Location: Knox County

### SUPPLEMENTAL NUTRITION ASSISTANCE PROGRAM (SNAP)

#### SNAP Issuance



#### SNAP Households and Recipients



**Note:**

All data July 2014 and following will be broken out according to the new DFR region structure effective July 1 2014.



## DIVISION OF FAMILY RESOURCES

### Monthly Management Report

Reporting Month: October 2019

Location: Knox County

#### HIP 2.0 and SNAP

	October 2019	September 2019	October 2018	Annual Change
Total HIP 2.0 Members	2,651	2,648	2,545	4.17%
HIP Members also SNAP Recipients	1,019	1,013	1,046	-2.58%
Percentage HIP Members SNAP Recipients	38.4%	38.3%	41.1%	1.54%
HIP Members SNAP ABAWDs	27	28	50	-46.00%
Percentage HIP Members SNAP ABAWDs	1.0%	1.1%	2.0%	1.54%

**Note:**

All data July 2014 and following will be broken out according to the new DFR region structure effective July 1 2014.



## DIVISION OF FAMILY RESOURCES

### Monthly Management Report

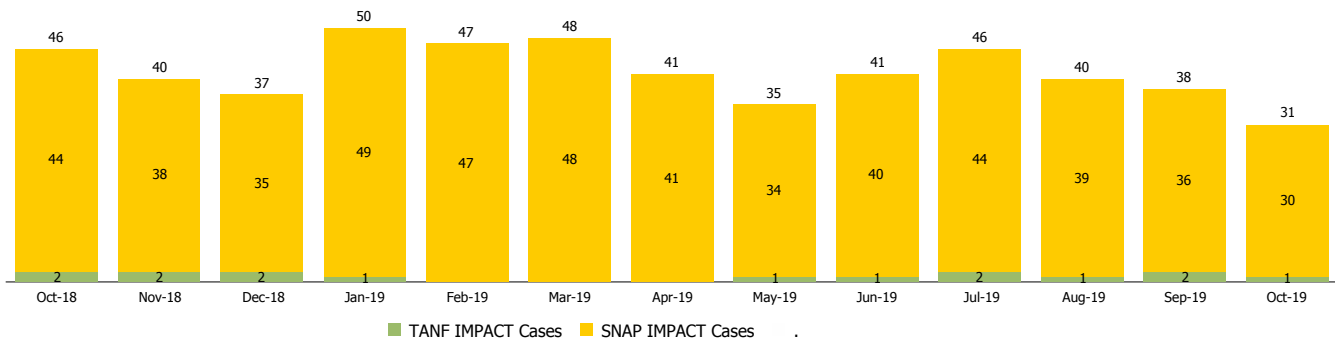
Reporting Month: October 2019

Location: Knox County

#### INDIANA MANPOWER PLACEMENT AND COMPREHENSIVE TRAINING (IMPACT)

	October 2019	September 2019	October 2018	Annual Change
Number of IMPACT cases	31	38	46	-32.61%
Number of TANF IMPACT adults	1	2	2	-50.00%
Number of SNAP IMPACT Cases	30	36	44	-31.82%
Total number of adults employed	9	7	18	-50.00%
Number of TANF IMPACT adults newly employed (within past 30 days)	0	0	0	
Number of SNAP IMPACT adults employed	9	7	18	-50.00%
Total number of adults ineligible due to employment	37	20	47	-21.28%
Number of TANF adults ineligible due to employment	1	0	0	
Number of SNAP adults ineligible due to employment	36	20	47	-23.40%

**IMPACT Caseloads**  
(SNAP, TANF, Total Caseload)



**Note:**

All data July 2014 and following will be broken out according to the new DFR region structure effective July 1 2014.