



## DIVISION OF FAMILY RESOURCES

# Jennings County Monthly Management Report October 2019

### State of Indiana

Eric Holcomb  
Governor

### Family and Social Services Administration

Jennifer Walthall, M.D.  
Secretary

### Division of Family Resources

Adrienne Shields  
Director

For questions regarding data on this report contact:  
[office.Communications@fssa.IN.gov](mailto:office.Communications@fssa.IN.gov)



## State of Indiana

Published November 2019



## DIVISION OF FAMILY RESOURCES

### Monthly Management Report

Reporting Month: October 2019

Location: Jennings County

#### TEMPORARY ASSISTANCE FOR NEEDY FAMILIES (TANF)

Child-Only and One-Parent Families	Oct 31, 2019	September 2019	October 2018	Annual Change
Number of families receiving TANF Grants	19	19	21	-9.52%
Total number of grant recipients	35	31	40	-12.50%
Number of adult grant recipients	3	2	4	-25.00%
Number of child grant recipients	32	29	36	-11.11%
Total payments	\$3,284	\$2,707	\$3,770	-12.89%
Average payment per case	\$172.84	\$142.47	\$179.52	-3.72%
Average payment per recipient	\$93.83	\$87.32	\$94.25	-0.45%
Number of cases with benefits reduced to zero	31	0	1	3,000.00%
Number of recipients with benefits reduced to zero	21	0	1	2,000.00%
Number of adult recipients with benefit reduced to zero	1	0	1	0.00%
Number of child recipients with benefit reduced to zero	20	0	0	0%

Two-Parent Families	Oct 31, 2019	September 2019	October 2018	Annual Change
Number of families receiving TANF Grants	0	0	0	0%
Total number of grant recipients	0	0	0	0%
Number of adult grant recipients	0	0	0	0%
Number of child grant recipients	0	0	0	0%
Total payments	\$0	\$0	\$0	0%
Average payment per case	\$0.00	\$0.00	\$0.00	0.00%
Average payment per recipient	\$0.00	\$0.00	\$0.00	0.00%
Number of cases with benefits reduced to zero	0	0	0	0%
Number of recipients with benefits reduced to zero	0	0	0	0%
Number of adult recipients with benefit reduced to zero	0	0	0	0%
Number of child recipients with benefit reduced to zero	0	0	0	0%

**Note:**

All data July 2014 and following will be broken out according to the new DFR region structure effective July 1 2014.

Source:



## DIVISION OF FAMILY RESOURCES

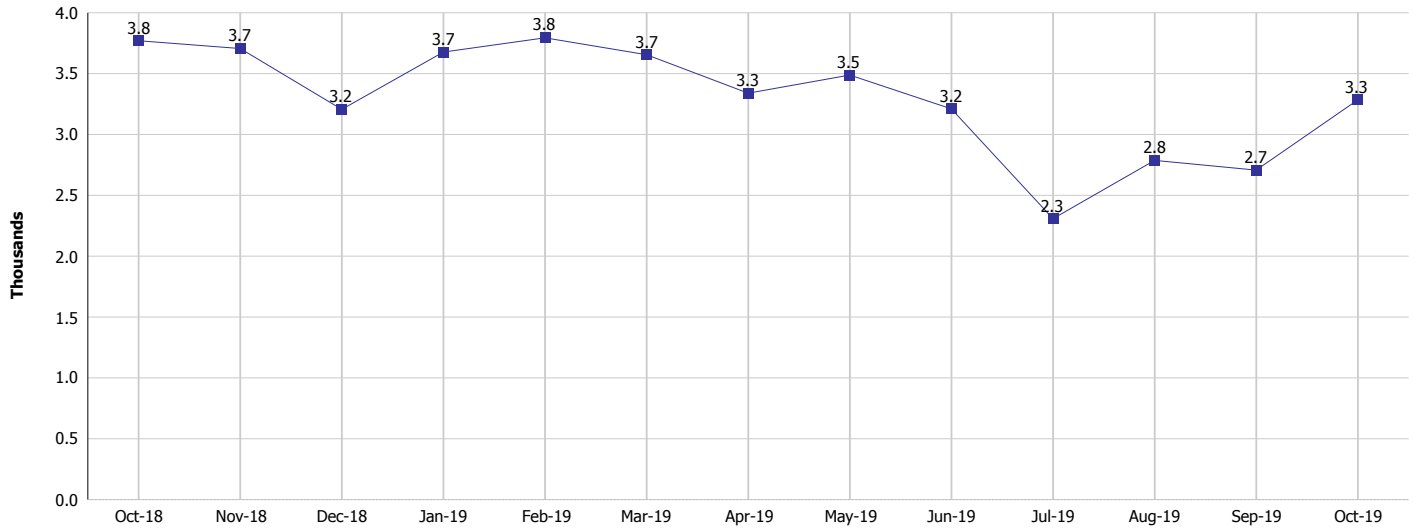
### Monthly Management Report

Reporting Month: October 2019

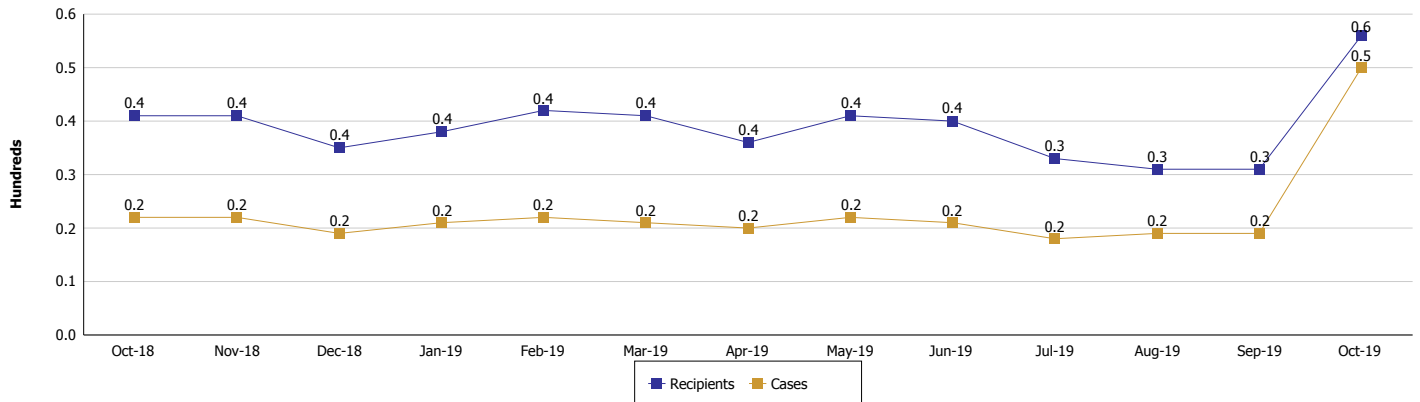
Location: Jennings County

#### TEMPORARY ASSISTANCE FOR NEEDY FAMILIES (TANF)

TANF Regular And TANF Two-Parent Cash Assistance



TANF Cases and Recipients  
(TANF Regular and TANF Two-Parent)



**Note:**

All data July 2014 and following will be broken out according to the new DFR region structure effective July 1 2014.



## DIVISION OF FAMILY RESOURCES

### Monthly Management Report

Reporting Month: October 2019

Location: Jennings County

#### SUPPLEMENTAL NUTRITION ASSISTANCE PROGRAM (SNAP)

	October 2019	September 2019	October 2018	Annual Change
Total issuance	\$238,842	\$235,538	\$238,880	-0.02%
Number of households receiving SNAP benefits	933	950	1,032	-9.59%
Number of recipients	1,974	2,035	2,205	-10.48%
Average issuance per household	\$255.99	\$247.93	\$231.47	10.59%
Average issuance per recipient	\$120.99	\$115.74	\$108.34	11.68%

**Note:**

All data July 2014 and following will be broken out according to the new DFR region structure effective July 1 2014.



## DIVISION OF FAMILY RESOURCES

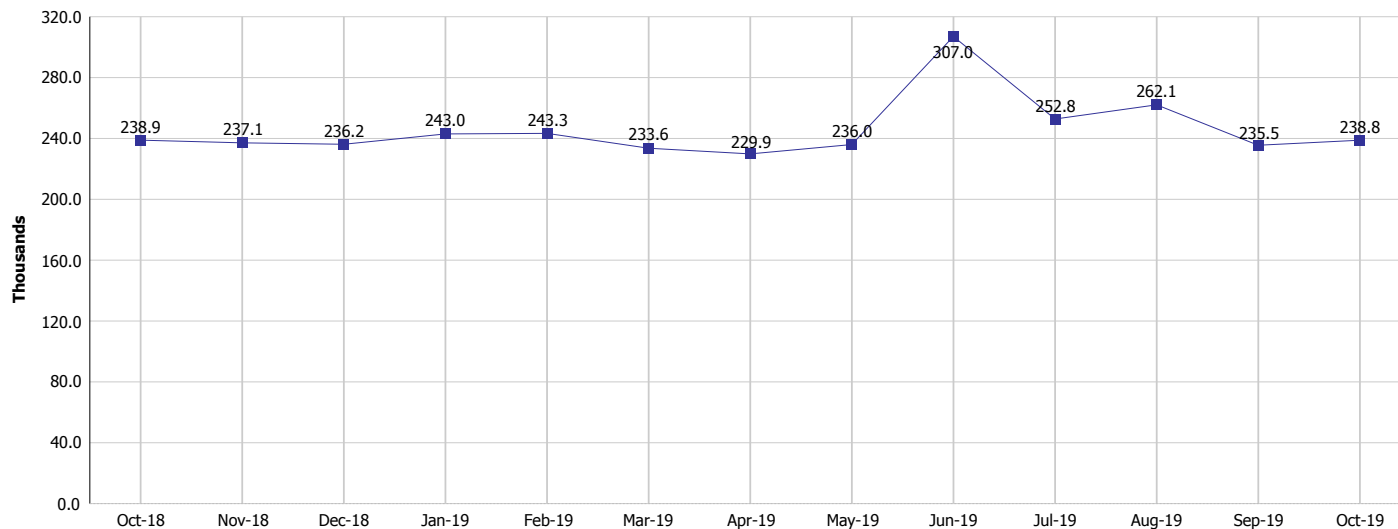
### Monthly Management Report

Reporting Month: October 2019

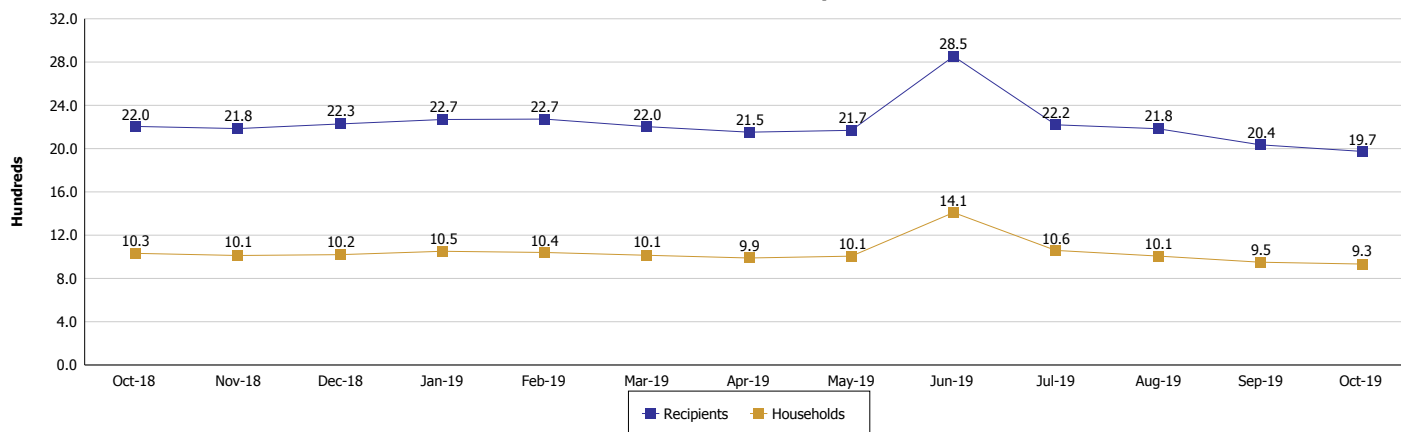
Location: Jennings County

#### SUPPLEMENTAL NUTRITION ASSISTANCE PROGRAM (SNAP)

#### SNAP Issuance



#### SNAP Households and Recipients



#### Note:

All data July 2014 and following will be broken out according to the new DFR region structure effective July 1 2014.



## DIVISION OF FAMILY RESOURCES

### Monthly Management Report

Reporting Month: October 2019

Location: Jennings County

#### HIP 2.0 and SNAP

	October 2019	September 2019	October 2018	Annual Change
Total HIP 2.0 Members	1,842	1,821	1,764	4.42%
HIP Members also SNAP Recipients	486	494	498	-2.41%
Percentage HIP Members SNAP Recipients	26.4%	27.1%	28.2%	2.46%
HIP Members SNAP ABAWDs	3	4	13	-76.92%
Percentage HIP Members SNAP ABAWDs	0.2%	0.2%	0.7%	2.46%

**Note:**

All data July 2014 and following will be broken out according to the new DFR region structure effective July 1 2014.



## DIVISION OF FAMILY RESOURCES

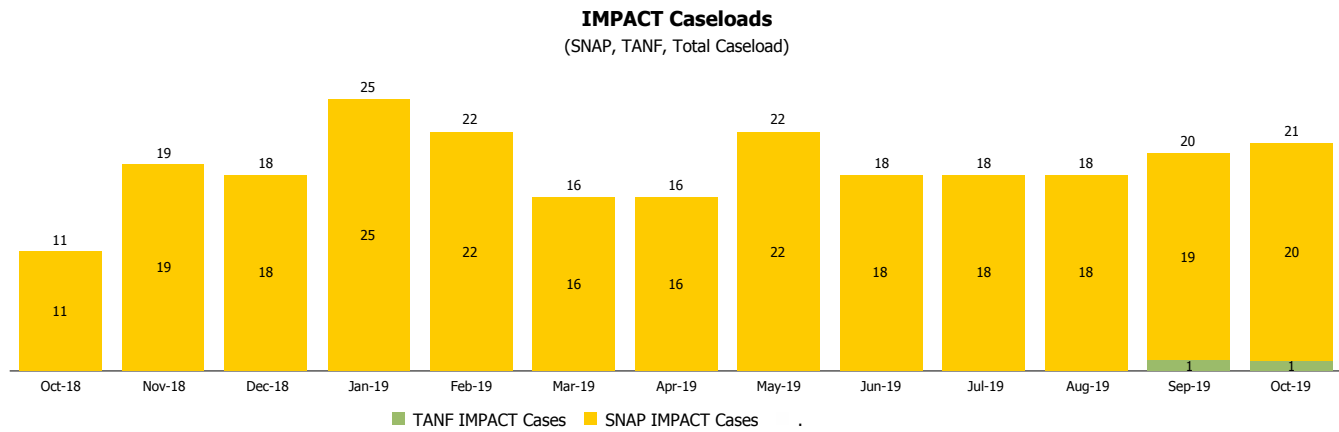
### Monthly Management Report

Reporting Month: October 2019

Location: Jennings County

#### INDIANA MANPOWER PLACEMENT AND COMPREHENSIVE TRAINING (IMPACT)

	October 2019	September 2019	October 2018	Annual Change
Number of IMPACT cases	21	20	11	90.91%
Number of TANF IMPACT adults	1	1	0	
Number of SNAP IMPACT Cases	20	19	11	81.82%
Total number of adults employed	1	2	6	-83.33%
Number of TANF IMPACT adults newly employed (within past 30 days)	0	0	0	
Number of SNAP IMPACT adults employed	1	2	6	-83.33%
Total number of adults ineligible due to employment	13	8	30	-56.67%
Number of TANF adults ineligible due to employment	0	0	0	
Number of SNAP adults ineligible due to employment	13	8	30	-56.67%



**Note:**

All data July 2014 and following will be broken out according to the new DFR region structure effective July 1 2014.