



## DIVISION OF FAMILY RESOURCES

# Jackson County Monthly Management Report September 2019

### State of Indiana

Eric Holcomb  
Governor

### Family and Social Services Administration

Jennifer Walthall, M.D.  
Secretary

### Division of Family Resources

Adrienne Shields  
Director

For questions regarding data on this report contact:  
[office.Communications@fssa.IN.gov](mailto:office.Communications@fssa.IN.gov)



## State of Indiana

Published October 2019



## DIVISION OF FAMILY RESOURCES

### Monthly Management Report

Reporting Month: September 2019

Location: Jackson County

#### TEMPORARY ASSISTANCE FOR NEEDY FAMILIES (TANF)

Child-Only and One-Parent Families	Sep 30, 2019	August 2019	September 2018	Annual Change
Number of families receiving TANF Grants	40	45	56	-28.57%
Total number of grant recipients	66	81	110	-40.00%
Number of adult grant recipients	4	8	14	-71.43%
Number of child grant recipients	62	73	96	-35.42%
Total payments	\$6,607	\$7,545	\$9,975	-33.76%
Average payment per case	\$165.18	\$167.67	\$178.12	-7.27%
Average payment per recipient	\$100.11	\$93.15	\$90.68	10.39%
Number of cases with benefits reduced to zero	0	0	1	-100.00%
Number of recipients with benefits reduced to zero	0	0	2	-100.00%
Number of adult recipients with benefit reduced to zero	0	0	1	-100.00%
Number of child recipients with benefit reduced to zero	0	0	1	-100.00%

Two-Parent Families	Sep 30, 2019	August 2019	September 2018	Annual Change
Number of families receiving TANF Grants	1	0	1	0.00%
Total number of grant recipients	2	0	5	-60.00%
Number of adult grant recipients	1	0	2	-50.00%
Number of child grant recipients	1	0	3	-66.67%
Total payments	\$229	\$0	\$256	-10.55%
Average payment per case	\$229.00	\$0.00	\$256.00	-10.55%
Average payment per recipient	\$114.50	\$0.00	\$51.20	123.63%
Number of cases with benefits reduced to zero	0	0	0	0%
Number of recipients with benefits reduced to zero	0	0	0	0%
Number of adult recipients with benefit reduced to zero	0	0	0	0%
Number of child recipients with benefit reduced to zero	0	0	0	0%

**Note:**

All data July 2014 and following will be broken out according to the new DFR region structure effective July 1 2014.

Source:



# DIVISION OF FAMILY RESOURCES

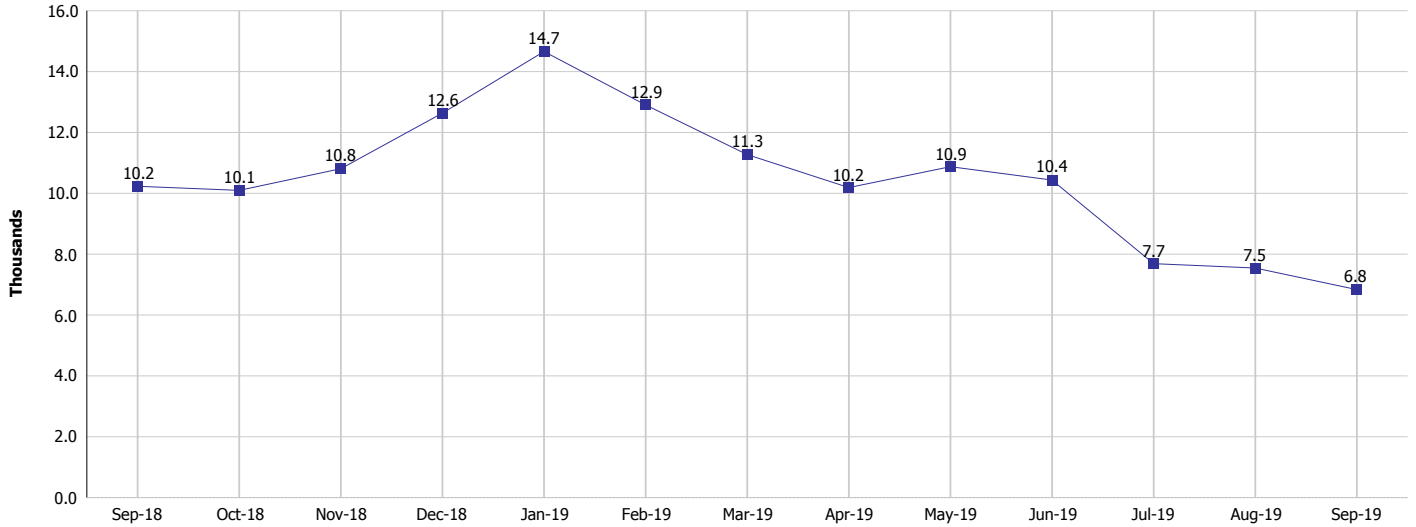
## Monthly Management Report

Reporting Month: September 2019

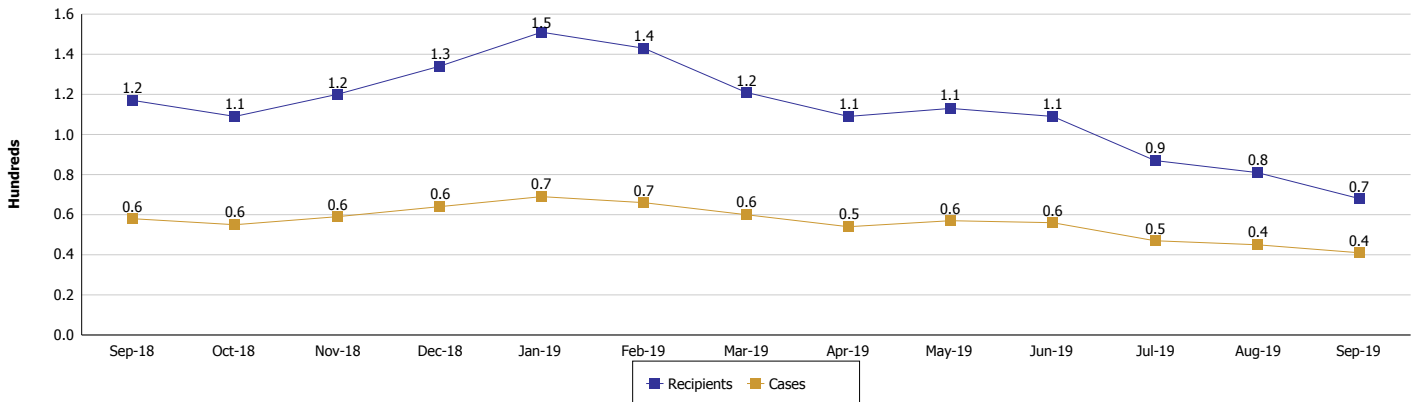
Location: Jackson County

### TEMPORARY ASSISTANCE FOR NEEDY FAMILIES (TANF)

#### TANF Regular And TANF Two-Parent Cash Assistance



#### TANF Cases and Recipients (TANF Regular and TANF Two-Parent)



**Note:**

All data July 2014 and following will be broken out according to the new DFR region structure effective July 1 2014.



## DIVISION OF FAMILY RESOURCES

### Monthly Management Report

Reporting Month: September 2019

Location: Jackson County

#### SUPPLEMENTAL NUTRITION ASSISTANCE PROGRAM (SNAP)

	September 2019	August 2019	September 2018	Annual Change
Total issuance	\$376,071	\$385,734	\$388,988	-3.32%
Number of households receiving SNAP benefits	1,416	1,486	1,589	-10.89%
Number of recipients	3,011	3,171	3,374	-10.76%
Average issuance per household	\$265.59	\$259.58	\$244.8	8.49%
Average issuance per recipient	\$124.9	\$121.64	\$115.29	8.34%

**Note:**

All data July 2014 and following will be broken out according to the new DFR region structure effective July 1 2014.



# DIVISION OF FAMILY RESOURCES

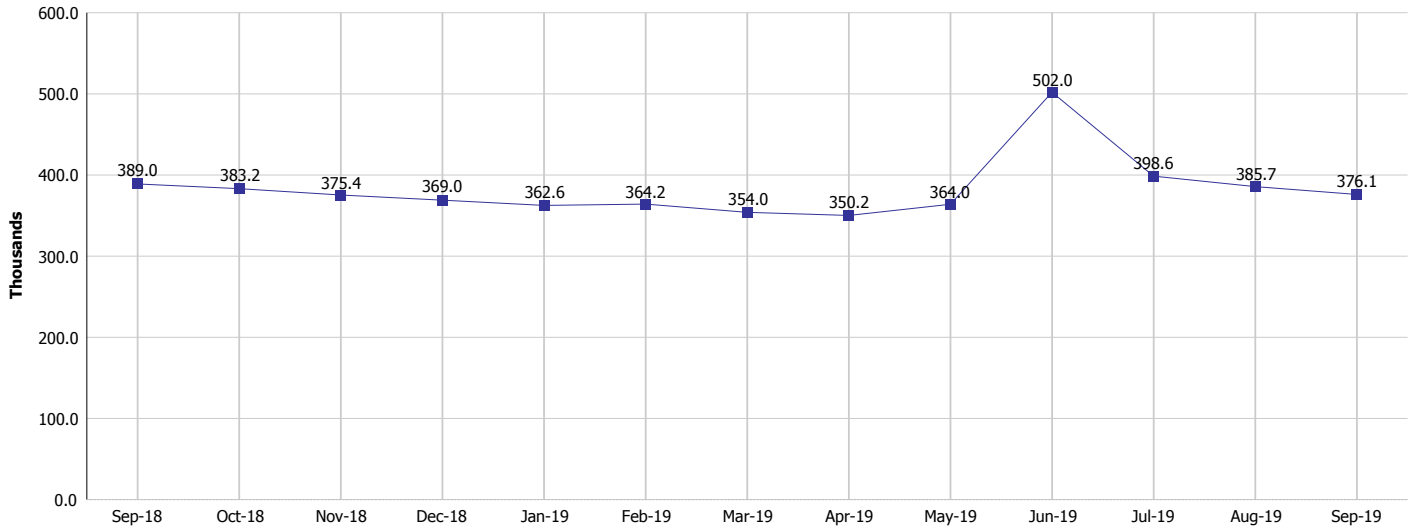
## Monthly Management Report

Reporting Month: September 2019

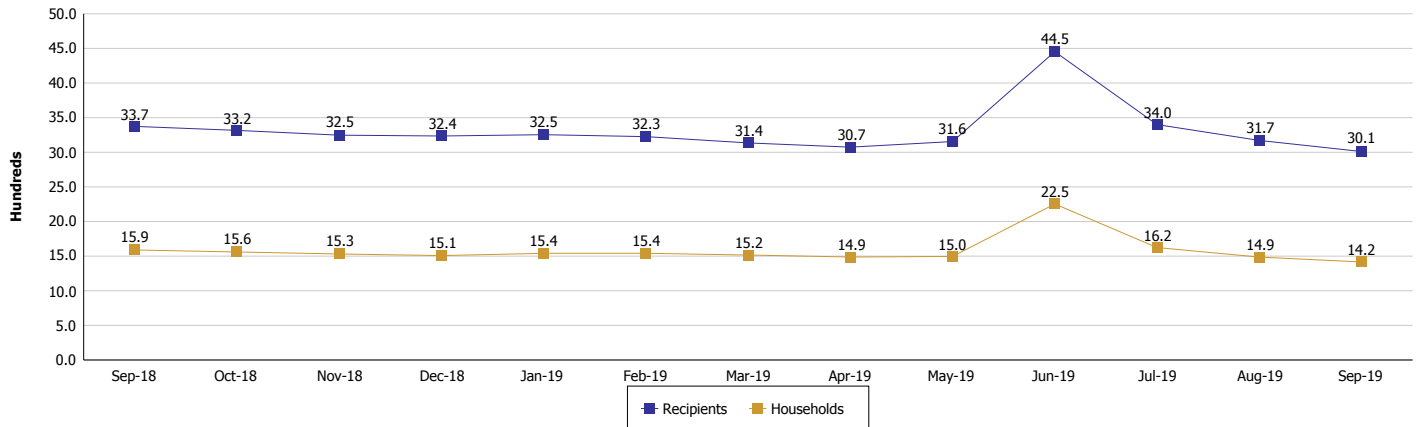
Location: Jackson County

### SUPPLEMENTAL NUTRITION ASSISTANCE PROGRAM (SNAP)

#### SNAP Issuance



#### SNAP Households and Recipients



#### Note:

All data July 2014 and following will be broken out according to the new DFR region structure effective July 1 2014.



## DIVISION OF FAMILY RESOURCES

### Monthly Management Report

Reporting Month: September 2019

Location: Jackson County

#### HIP 2.0 and SNAP

	September 2019	August 2019	September 2018	Annual Change
Total HIP 2.0 Members	2,625	2,386	2,534	3.59%
HIP Members also SNAP Recipients	696	651	742	-6.20%
Percentage HIP Members SNAP Recipients	26.5%	27.3%	29.3%	0.48%
HIP Members SNAP ABAWDs	12	13	41	-70.73%
Percentage HIP Members SNAP ABAWDs	0.5%	0.5%	1.6%	0.48%

**Note:**

All data July 2014 and following will be broken out according to the new DFR region structure effective July 1 2014.



## DIVISION OF FAMILY RESOURCES

### Monthly Management Report

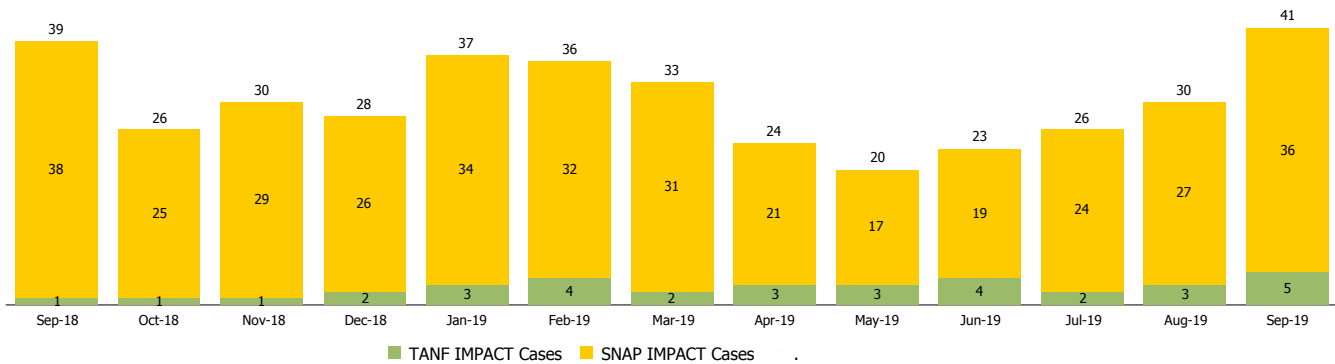
Reporting Month: September 2019

Location: Jackson County

#### INDIANA MANPOWER PLACEMENT AND COMPREHENSIVE TRAINING (IMPACT)

	September 2019	August 2019	September 2018	Annual Change
Number of IMPACT cases	41	30	39	5.13%
Number of TANF IMPACT adults	5	3	1	400.00%
Number of SNAP IMPACT Cases	36	27	38	-5.26%
Total number of adults employed	9	6	4	125.00%
Number of TANF IMPACT adults newly employed (within past 30 days)	1	0	0	
Number of SNAP IMPACT adults employed	8	6	4	100.00%
Total number of adults ineligible due to employment	13	17	28	-53.57%
Number of TANF adults ineligible due to employment	0	0	0	
Number of SNAP adults ineligible due to employment	13	17	28	-53.57%

**IMPACT Caseloads**  
(SNAP, TANF, Total Caseload)



**Note:**

All data July 2014 and following will be broken out according to the new DFR region structure effective July 1 2014.