



## DIVISION OF FAMILY RESOURCES

# Fulton County Monthly Management Report April 2018

### State of Indiana

Eric Holcomb  
Governor

### Family and Social Services Administration

Jennifer Walthall, M.D.  
Secretary

### Division of Family Resources

Adrienne Shields  
Director

For questions regarding data on this report contact:  
[office.Communications@fssa.IN.gov](mailto:office.Communications@fssa.IN.gov)



## State of Indiana

Published May 2018



# DIVISION OF FAMILY RESOURCES

## Monthly Management Report

Reporting Month: April 2018

Location: Fulton County

### TEMPORARY ASSISTANCE FOR NEEDY FAMILIES (TANF)

Child-Only and One-Parent Families	Apr 30, 2018	March 2018	April 2017	Annual Change
Number of families receiving TANF Grants	23	23	17	35.29%
Total number of grant recipients	44	43	23	91.30%
Number of adult grant recipients	7	6	2	250.00%
Number of child grant recipients	37	37	21	76.19%
Total payments	\$4,100	\$4,428	\$2,735	49.91%
Average payment per case	\$178.26	\$192.52	\$160.88	10.80%
Average payment per recipient	\$93.18	\$102.98	\$118.91	-21.64%
Number of cases with benefits reduced to zero	1	1	0	0%
Number of recipients with benefits reduced to zero	1	1	0	0%
Number of adult recipients with benefit reduced to zero	0	0	0	0%
Number of child recipients with benefit reduced to zero	1	1	0	0%

Two-Parent Families	Apr 30, 2018	March 2018	April 2017	Annual Change
Number of families receiving TANF Grants	0	0	0	0%
Total number of grant recipients	0	0	0	0%
Number of adult grant recipients	0	0	0	0%
Number of child grant recipients	0	0	0	0%
Total payments	\$0	\$0	\$0	0%
Average payment per case	\$0.00	\$0.00	\$0.00	0.00%
Average payment per recipient	\$0.00	\$0.00	\$0.00	0.00%
Number of cases with benefits reduced to zero	0	0	0	0%
Number of recipients with benefits reduced to zero	0	0	0	0%
Number of adult recipients with benefit reduced to zero	0	0	0	0%
Number of child recipients with benefit reduced to zero	0	0	0	0%

**Note:**

All data July 2014 and following will be broken out according to the new DFR region structure effective July 1 2014.

Source:



# DIVISION OF FAMILY RESOURCES

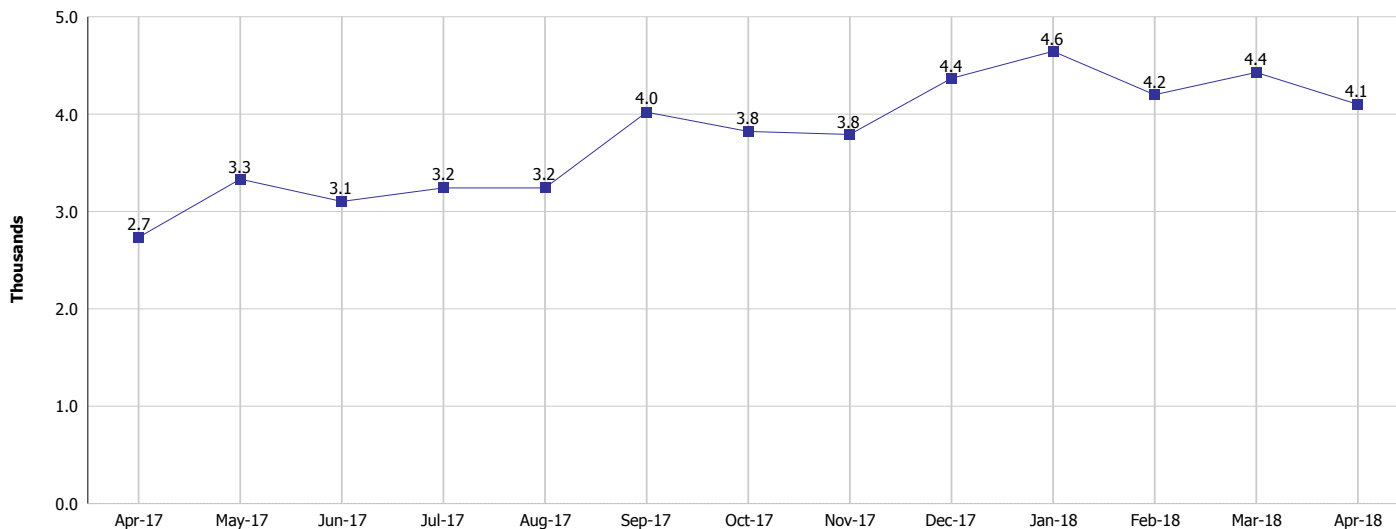
## Monthly Management Report

Reporting Month: April 2018

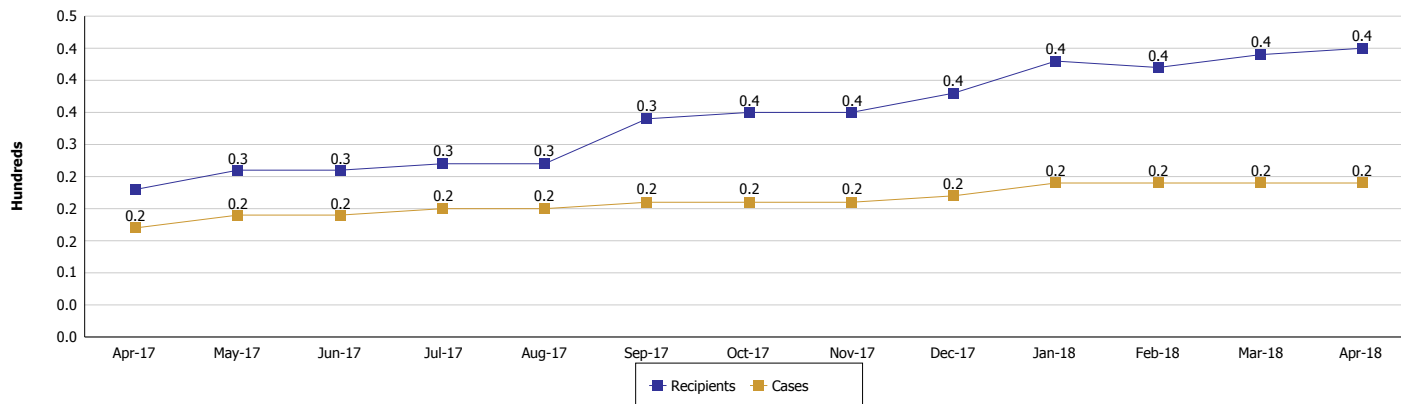
Location: Fulton County

### TEMPORARY ASSISTANCE FOR NEEDY FAMILIES (TANF)

#### TANF Regular And TANF Two-Parent Cash Assistance



#### TANF Cases and Recipients (TANF Regular and TANF Two-Parent)



#### Note:

All data July 2014 and following will be broken out according to the new DFR region structure effective July 1 2014.



## DIVISION OF FAMILY RESOURCES

### Monthly Management Report

Reporting Month: April 2018

Location: Fulton County

#### SUPPLEMENTAL NUTRITION ASSISTANCE PROGRAM (SNAP)

	April 2018	March 2018	April 2017	Annual Change
Total issuance	\$172,869	\$178,400	\$227,023	-23.85%
Number of households receiving SNAP benefits	706	717	860	-17.91%
Number of recipients	1,601	1,627	2,057	-22.17%
Average issuance per household	\$244.86	\$248.81	\$263.98	-7.24%
Average issuance per recipient	\$107.98	\$109.65	\$110.37	-2.17%

**Note:**

All data July 2014 and following will be broken out according to the new DFR region structure effective July 1 2014.



# DIVISION OF FAMILY RESOURCES

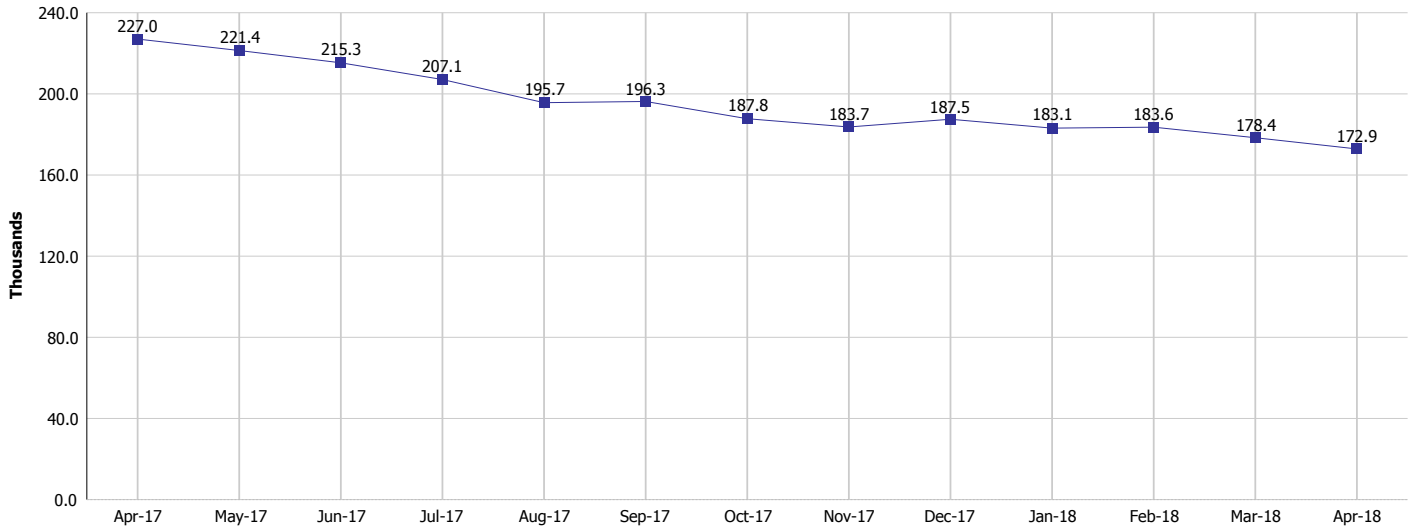
## Monthly Management Report

Reporting Month: April 2018

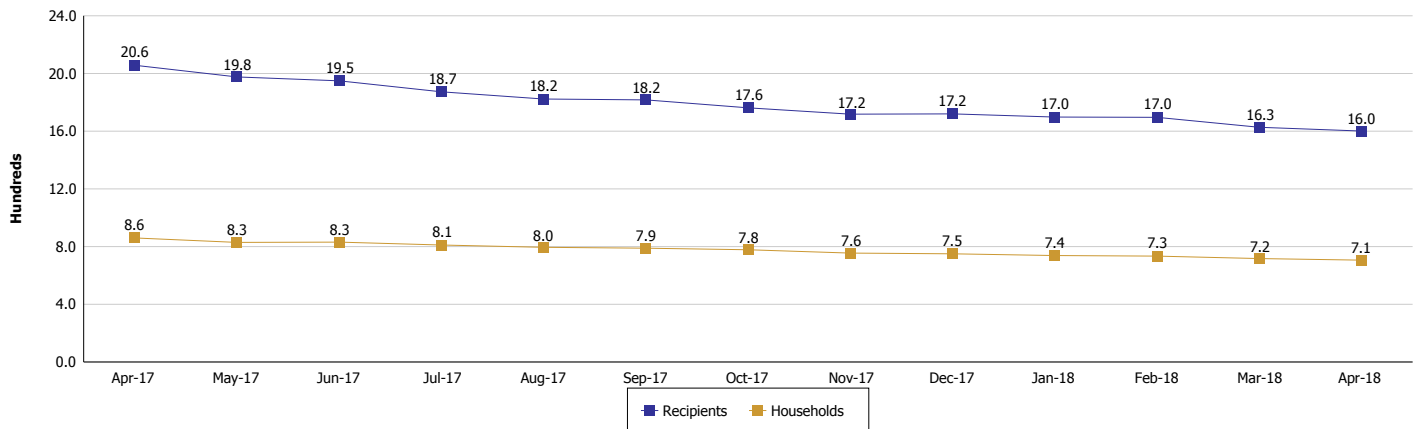
Location: Fulton County

### SUPPLEMENTAL NUTRITION ASSISTANCE PROGRAM (SNAP)

#### SNAP Issuance



#### SNAP Households and Recipients



**Note:**

All data July 2014 and following will be broken out according to the new DFR region structure effective July 1 2014.



## DIVISION OF FAMILY RESOURCES

### Monthly Management Report

Reporting Month: April 2018

Location: Fulton County

#### HIP 2.0 and SNAP

	April 2018	March 2018	April 2017	Annual Change
Total HIP 2.0 Members	1,293	1,306	1,454	-11.07%
HIP Members also SNAP Recipients	375	392	517	-27.47%
Percentage HIP Members SNAP Recipients	29.0%	30.0%	35.6%	-15.35%
HIP Members SNAP ABAWDs	8	7	9	-11.11%
Percentage HIP Members SNAP ABAWDs	0.6%	0.5%	0.6%	-15.35%

**Note:**

All data July 2014 and following will be broken out according to the new DFR region structure effective July 1 2014.



## DIVISION OF FAMILY RESOURCES

### Monthly Management Report

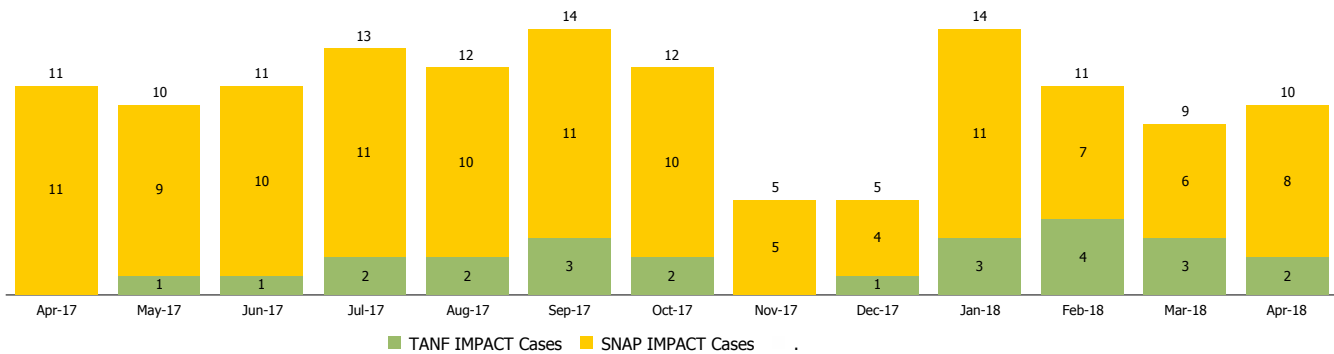
Reporting Month: April 2018

Location: Fulton County

#### INDIANA MANPOWER PLACEMENT AND COMPREHENSIVE TRAINING (IMPACT)

	April 2018	March 2018	April 2017	Annual Change
Number of IMPACT cases	10	9	11	-9.09%
Number of TANF IMPACT adults	2	3	0	
Number of SNAP IMPACT Cases	8	6	11	-27.27%
Total number of adults employed	4	4	7	-42.86%
Number of TANF IMPACT adults newly employed (within past 30 days)	0	0	0	
Number of SNAP IMPACT adults employed	4	4	7	-42.86%
Total number of adults ineligible due to employment	19	19	34	-44.12%
Number of TANF adults ineligible due to employment	0	0	0	
Number of SNAP adults ineligible due to employment	19	19	34	-44.12%

**IMPACT Caseloads**  
(SNAP, TANF, Total Caseload)



**Note:**

All data July 2014 and following will be broken out according to the new DFR region structure effective July 1 2014.