



## DIVISION OF FAMILY RESOURCES

# Fountain County Monthly Management Report October 2019

### State of Indiana

Eric Holcomb  
Governor

### Family and Social Services Administration

Jennifer Walthall, M.D.  
Secretary

### Division of Family Resources

Adrienne Shields  
Director

For questions regarding data on this report contact:  
[office.Communications@fssa.IN.gov](mailto:office.Communications@fssa.IN.gov)



## State of Indiana

Published November 2019



## DIVISION OF FAMILY RESOURCES

### Monthly Management Report

Reporting Month: October 2019

Location: Fountain County

#### TEMPORARY ASSISTANCE FOR NEEDY FAMILIES (TANF)

Child-Only and One-Parent Families	Oct 31, 2019	September 2019	October 2018	Annual Change
Number of families receiving TANF Grants	9	10	12	-25.00%
Total number of grant recipients	17	19	19	-10.53%
Number of adult grant recipients	0	1	1	-100.00%
Number of child grant recipients	17	18	18	-5.56%
Total payments	\$1,457	\$1,686	\$2,022	-27.94%
Average payment per case	\$161.89	\$168.60	\$168.50	-3.92%
Average payment per recipient	\$85.71	\$88.74	\$106.42	-19.47%
Number of cases with benefits reduced to zero	0	0	2	-100.00%
Number of recipients with benefits reduced to zero	0	0	5	-100.00%
Number of adult recipients with benefit reduced to zero	0	0	1	-100.00%
Number of child recipients with benefit reduced to zero	0	0	4	-100.00%

Two-Parent Families	Oct 31, 2019	September 2019	October 2018	Annual Change
Number of families receiving TANF Grants	0	0	0	0%
Total number of grant recipients	0	0	0	0%
Number of adult grant recipients	0	0	0	0%
Number of child grant recipients	0	0	0	0%
Total payments	\$0	\$0	\$0	0%
Average payment per case	\$0.00	\$0.00	\$0.00	0.00%
Average payment per recipient	\$0.00	\$0.00	\$0.00	0.00%
Number of cases with benefits reduced to zero	0	0	0	0%
Number of recipients with benefits reduced to zero	0	0	0	0%
Number of adult recipients with benefit reduced to zero	0	0	0	0%
Number of child recipients with benefit reduced to zero	0	0	0	0%

**Note:**

All data July 2014 and following will be broken out according to the new DFR region structure effective July 1 2014.

Source:



## DIVISION OF FAMILY RESOURCES

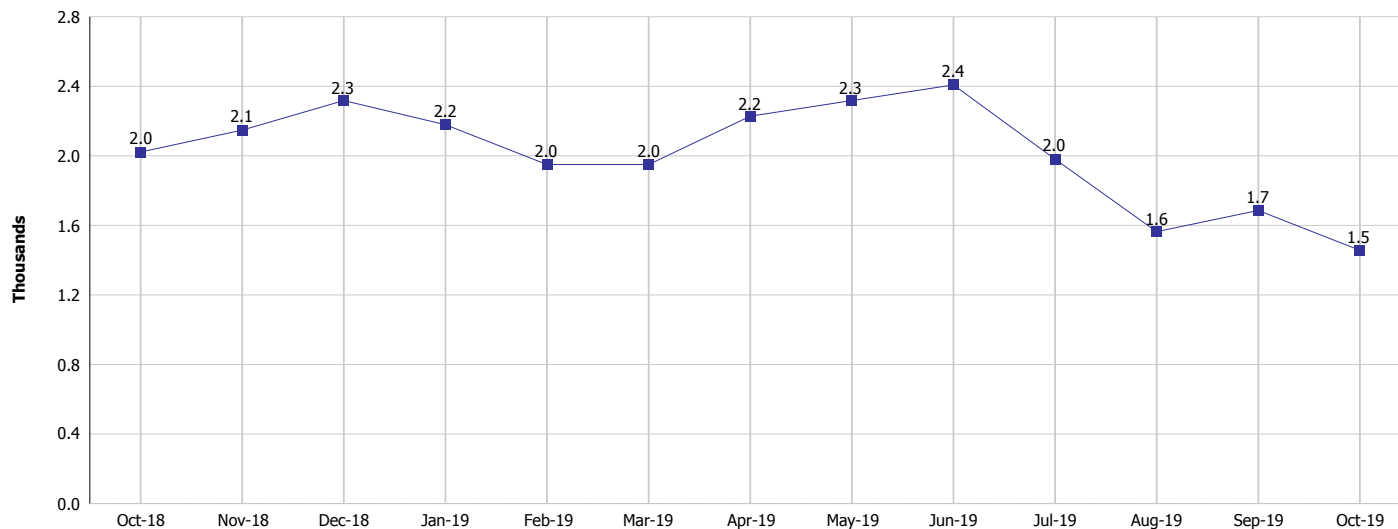
### Monthly Management Report

Reporting Month: October 2019

Location: Fountain County

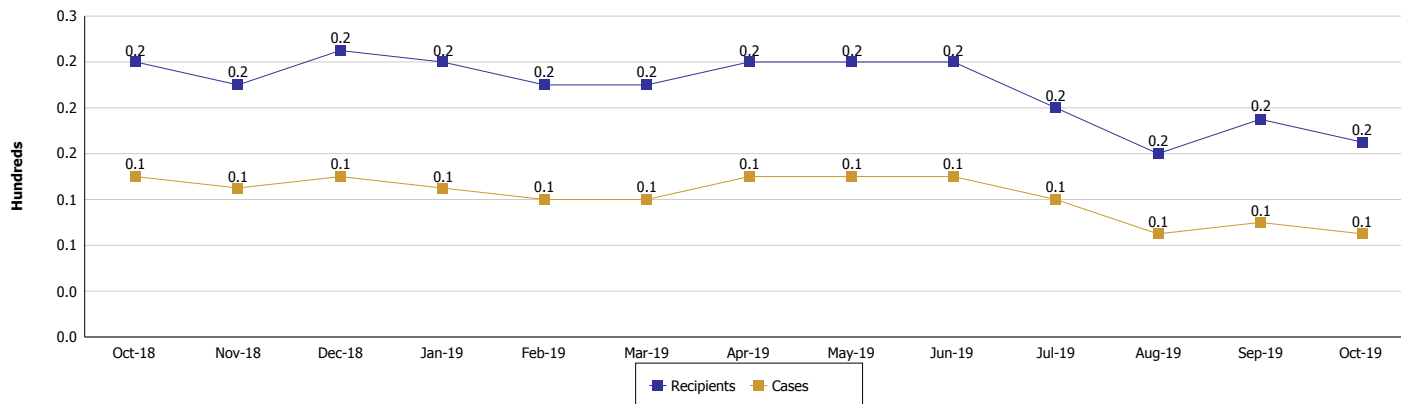
#### TEMPORARY ASSISTANCE FOR NEEDY FAMILIES (TANF)

#### TANF Regular And TANF Two-Parent Cash Assistance



#### TANF Cases and Recipients

(TANF Regular and TANF Two-Parent)



**Note:**

All data July 2014 and following will be broken out according to the new DFR region structure effective July 1 2014.



## DIVISION OF FAMILY RESOURCES

### Monthly Management Report

Reporting Month: October 2019

Location: Fountain County

#### SUPPLEMENTAL NUTRITION ASSISTANCE PROGRAM (SNAP)

	October 2019	September 2019	October 2018	Annual Change
Total issuance	\$134,442	\$132,723	\$137,907	-2.51%
Number of households receiving SNAP benefits	559	564	568	-1.58%
Number of recipients	1,183	1,178	1,223	-3.27%
Average issuance per household	\$240.5	\$235.32	\$242.79	-0.94%
Average issuance per recipient	\$113.65	\$112.67	\$112.76	0.79%

**Note:**

All data July 2014 and following will be broken out according to the new DFR region structure effective July 1 2014.



# DIVISION OF FAMILY RESOURCES

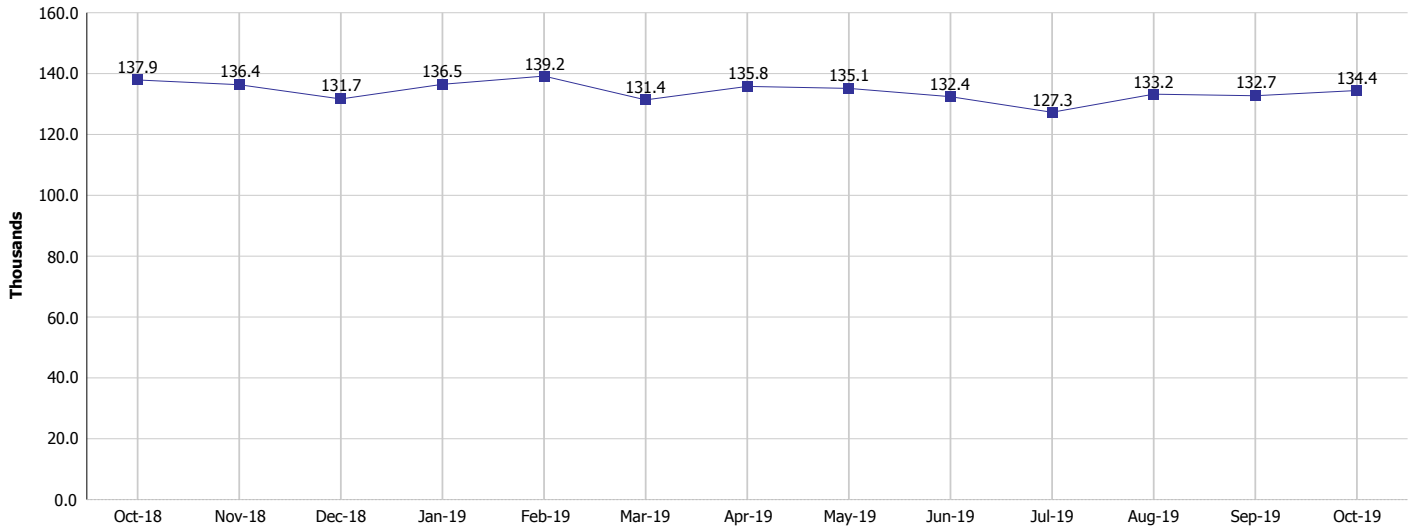
## Monthly Management Report

Reporting Month: October 2019

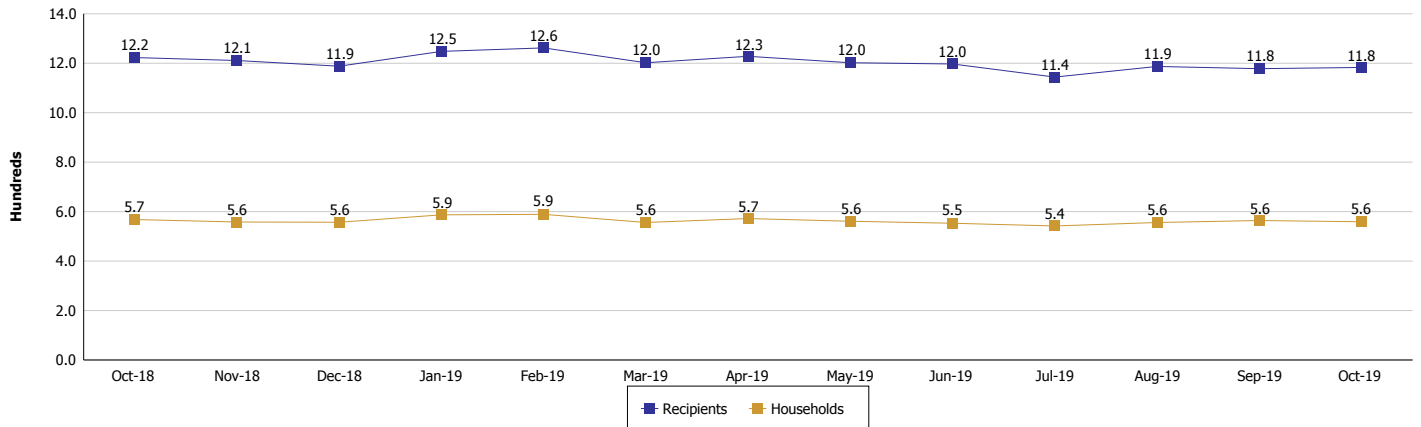
Location: Fountain County

### SUPPLEMENTAL NUTRITION ASSISTANCE PROGRAM (SNAP)

#### SNAP Issuance



#### SNAP Households and Recipients



#### Note:

All data July 2014 and following will be broken out according to the new DFR region structure effective July 1 2014.



## DIVISION OF FAMILY RESOURCES

### Monthly Management Report

Reporting Month: October 2019

Location: Fountain County

#### HIP 2.0 and SNAP

	October 2019	September 2019	October 2018	Annual Change
Total HIP 2.0 Members	1,000	985	984	1.63%
HIP Members also SNAP Recipients	312	312	295	5.76%
Percentage HIP Members SNAP Recipients	31.2%	31.7%	30.0%	2.80%
HIP Members SNAP ABAWDs	10	6	7	42.86%
Percentage HIP Members SNAP ABAWDs	1.0%	0.6%	0.7%	2.80%

**Note:**

All data July 2014 and following will be broken out according to the new DFR region structure effective July 1 2014.



## DIVISION OF FAMILY RESOURCES

### Monthly Management Report

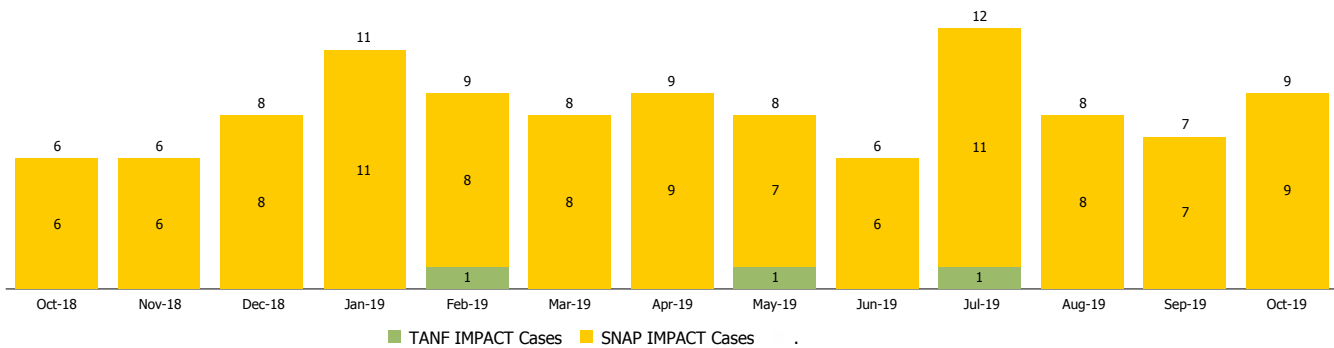
Reporting Month: October 2019

Location: Fountain County

#### INDIANA MANPOWER PLACEMENT AND COMPREHENSIVE TRAINING (IMPACT)

	October 2019	September 2019	October 2018	Annual Change
Number of IMPACT cases	9	7	6	50.00%
Number of TANF IMPACT adults	0	0	0	
Number of SNAP IMPACT Cases	9	7	6	50.00%
Total number of adults employed	1	1	5	-80.00%
Number of TANF IMPACT adults newly employed (within past 30 days)	0	0	0	
Number of SNAP IMPACT adults employed	1	1	5	-80.00%
Total number of adults ineligible due to employment	9	18	15	-40.00%
Number of TANF adults ineligible due to employment	0	0	0	
Number of SNAP adults ineligible due to employment	9	18	15	-40.00%

**IMPACT Caseloads**  
(SNAP, TANF, Total Caseload)



**Note:**

All data July 2014 and following will be broken out according to the new DFR region structure effective July 1 2014.