



## DIVISION OF FAMILY RESOURCES

# Fayette County Monthly Management Report September 2019

### State of Indiana

Eric Holcomb  
Governor

### Family and Social Services Administration

Jennifer Walthall, M.D.  
Secretary

### Division of Family Resources

Adrienne Shields  
Director

For questions regarding data on this report contact:  
[office.Communications@fssa.IN.gov](mailto:office.Communications@fssa.IN.gov)



## State of Indiana

Published October 2019



## DIVISION OF FAMILY RESOURCES

### Monthly Management Report

Reporting Month: September 2019

Location: Fayette County

#### TEMPORARY ASSISTANCE FOR NEEDY FAMILIES (TANF)

Child-Only and One-Parent Families	Sep 30, 2019	August 2019	September 2018	Annual Change
Number of families receiving TANF Grants	39	37	57	-31.58%
Total number of grant recipients	60	57	94	-36.17%
Number of adult grant recipients	6	5	11	-45.45%
Number of child grant recipients	54	52	83	-34.94%
Total payments	\$6,242	\$5,982	\$9,129	-31.62%
Average payment per case	\$160.05	\$161.68	\$160.16	-0.07%
Average payment per recipient	\$104.03	\$104.95	\$97.12	7.12%
Number of cases with benefits reduced to zero	1	0	2	-50.00%
Number of recipients with benefits reduced to zero	1	0	2	-50.00%
Number of adult recipients with benefit reduced to zero	0	0	0	0%
Number of child recipients with benefit reduced to zero	1	0	2	-50.00%

Two-Parent Families	Sep 30, 2019	August 2019	September 2018	Annual Change
Number of families receiving TANF Grants	1	1	0	0%
Total number of grant recipients	1	1	0	0%
Number of adult grant recipients	0	0	0	0%
Number of child grant recipients	1	1	0	0%
Total payments	\$139	\$139	\$0	0%
Average payment per case	\$139.00	\$139.00	\$0.00	0.00%
Average payment per recipient	\$139.00	\$139.00	\$0.00	0.00%
Number of cases with benefits reduced to zero	0	0	0	0%
Number of recipients with benefits reduced to zero	0	0	0	0%
Number of adult recipients with benefit reduced to zero	0	0	0	0%
Number of child recipients with benefit reduced to zero	0	0	0	0%

**Note:**

All data July 2014 and following will be broken out according to the new DFR region structure effective July 1 2014.

Source:



# DIVISION OF FAMILY RESOURCES

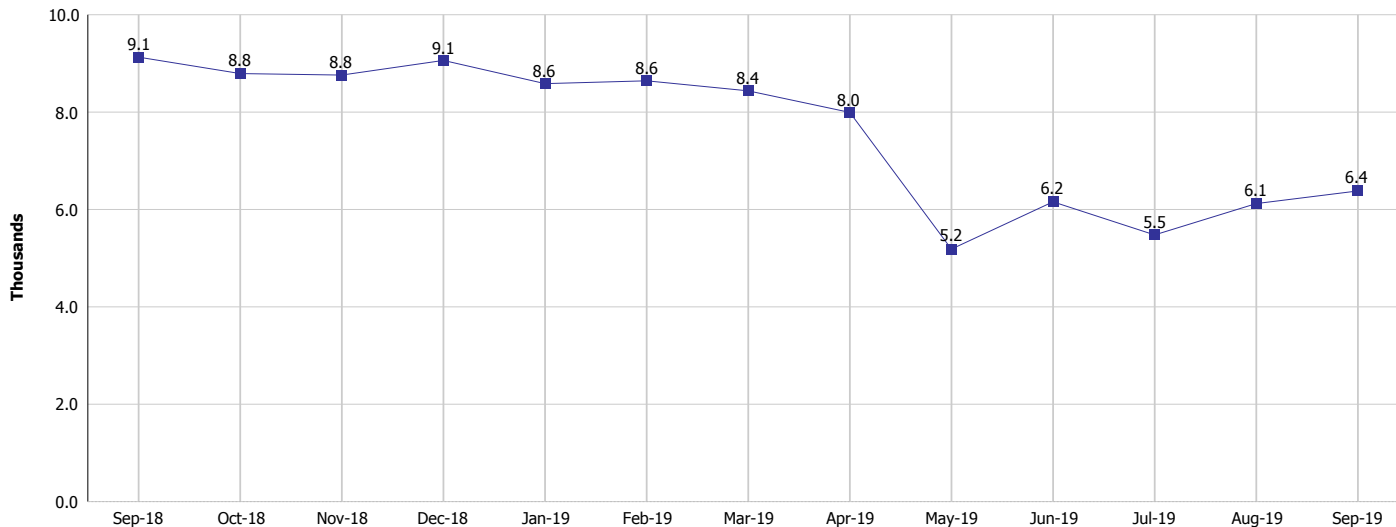
## Monthly Management Report

Reporting Month: September 2019

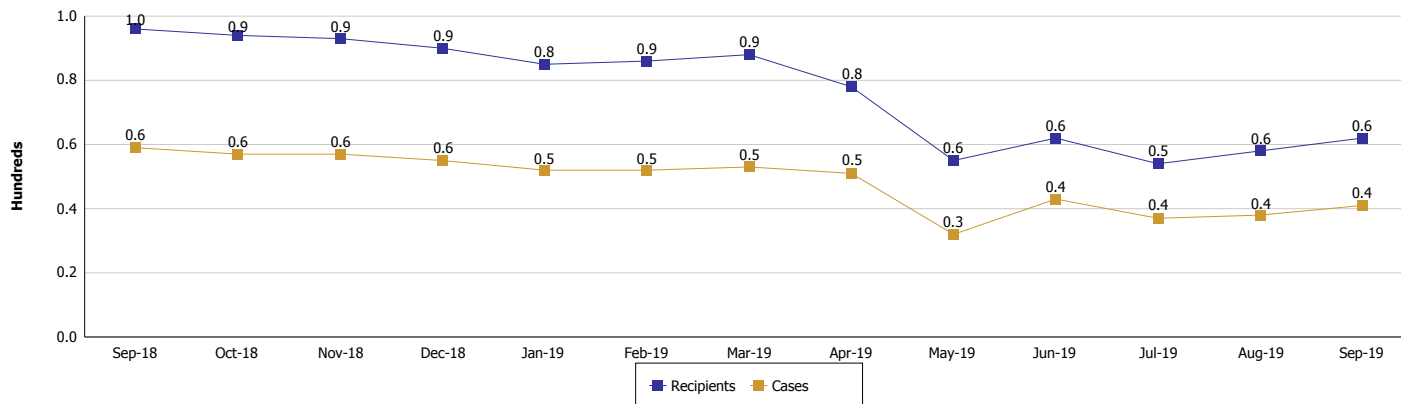
Location: Fayette County

### TEMPORARY ASSISTANCE FOR NEEDY FAMILIES (TANF)

#### TANF Regular And TANF Two-Parent Cash Assistance



#### TANF Cases and Recipients (TANF Regular and TANF Two-Parent)



**Note:**

All data July 2014 and following will be broken out according to the new DFR region structure effective July 1 2014.



## DIVISION OF FAMILY RESOURCES

### Monthly Management Report

Reporting Month: September 2019

Location: Fayette County

#### SUPPLEMENTAL NUTRITION ASSISTANCE PROGRAM (SNAP)

	September 2019	August 2019	September 2018	Annual Change
Total issuance	\$344,888	\$353,891	\$348,049	-0.91%
Number of households receiving SNAP benefits	1,550	1,567	1,625	-4.62%
Number of recipients	2,961	3,055	3,143	-5.79%
Average issuance per household	\$222.51	\$225.84	\$214.18	3.89%
Average issuance per recipient	\$116.48	\$115.84	\$110.74	5.18%

**Note:**

All data July 2014 and following will be broken out according to the new DFR region structure effective July 1 2014.



# DIVISION OF FAMILY RESOURCES

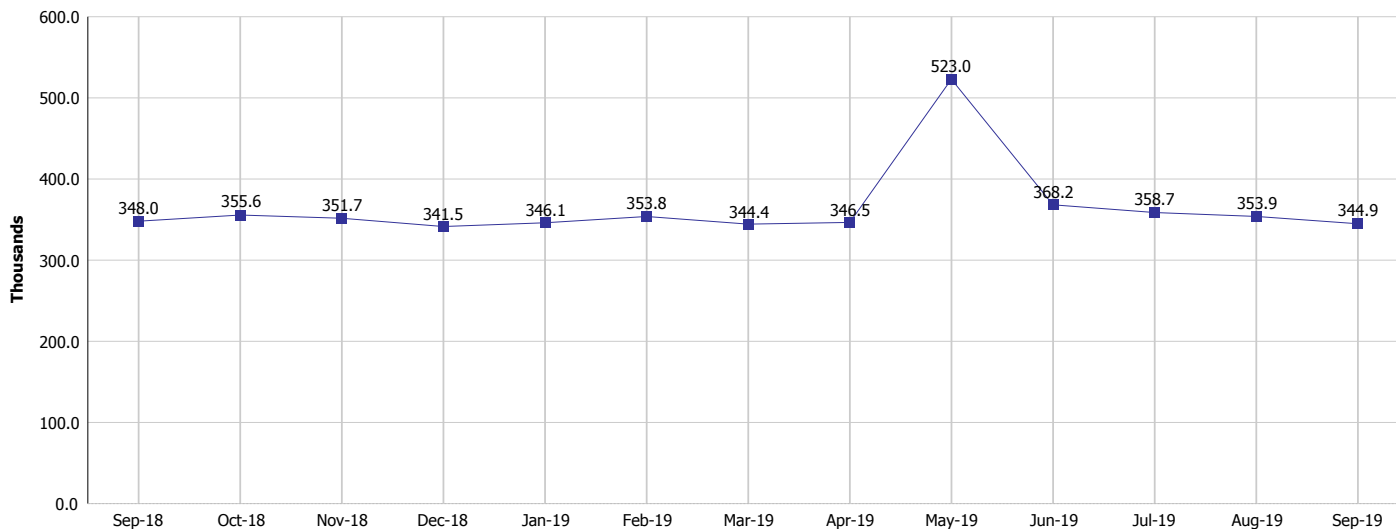
## Monthly Management Report

Reporting Month: September 2019

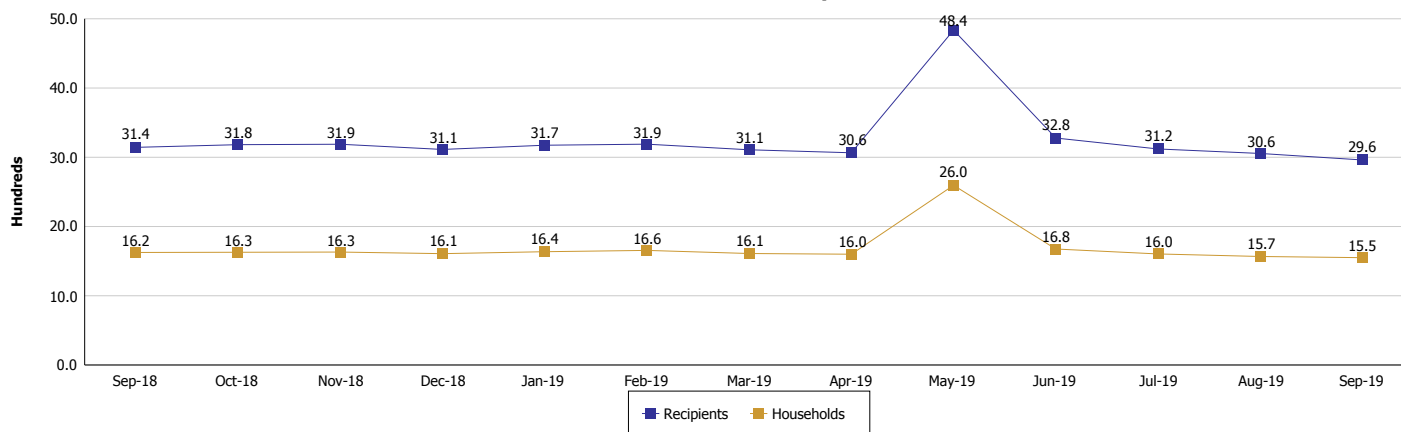
Location: Fayette County

### SUPPLEMENTAL NUTRITION ASSISTANCE PROGRAM (SNAP)

#### SNAP Issuance



#### SNAP Households and Recipients



**Note:**

All data July 2014 and following will be broken out according to the new DFR region structure effective July 1 2014.



## DIVISION OF FAMILY RESOURCES

### Monthly Management Report

Reporting Month: September 2019

Location: Fayette County

#### HIP 2.0 and SNAP

	September 2019	August 2019	September 2018	Annual Change
Total HIP 2.0 Members	2,260	2,092	2,270	-0.44%
HIP Members also SNAP Recipients	826	776	853	-3.17%
Percentage HIP Members SNAP Recipients	36.5%	37.1%	37.6%	-2.55%
HIP Members SNAP ABAWDs	11	16	55	-80.00%
Percentage HIP Members SNAP ABAWDs	0.5%	0.8%	2.4%	-2.55%

**Note:**

All data July 2014 and following will be broken out according to the new DFR region structure effective July 1 2014.

Source:



## DIVISION OF FAMILY RESOURCES

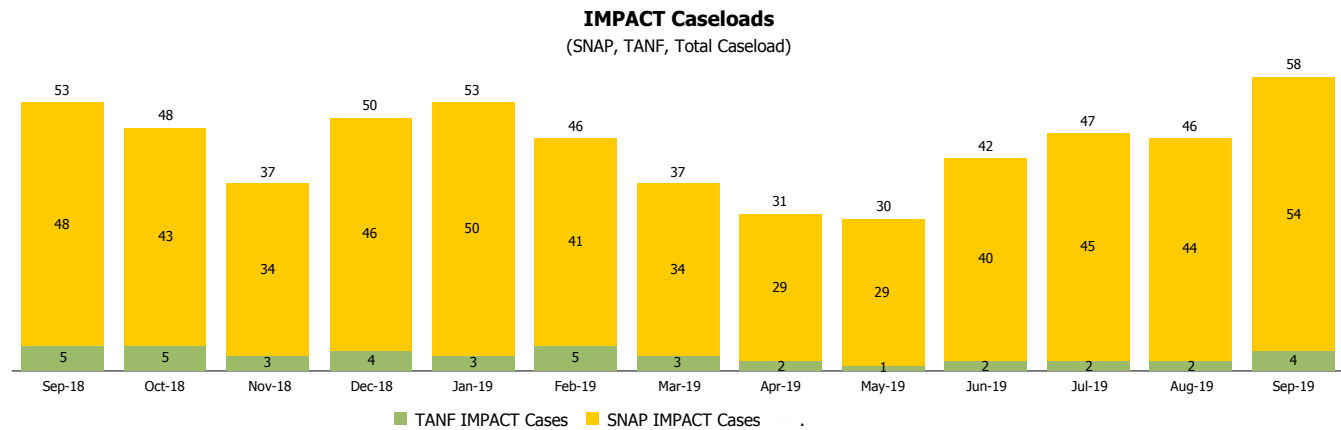
### Monthly Management Report

Reporting Month: September 2019

Location: Fayette County

#### INDIANA MANPOWER PLACEMENT AND COMPREHENSIVE TRAINING (IMPACT)

	September 2019	August 2019	September 2018	Annual Change
Number of IMPACT cases	58	46	53	9.43%
Number of TANF IMPACT adults	4	2	5	-20.00%
Number of SNAP IMPACT Cases	54	44	48	12.50%
Total number of adults employed	6	4	8	-25.00%
Number of TANF IMPACT adults newly employed (within past 30 days)	0	0	2	-100.00%
Number of SNAP IMPACT adults employed	6	4	6	0.00%
Total number of adults ineligible due to employment	9	16	37	-75.68%
Number of TANF adults ineligible due to employment	0	0	0	
Number of SNAP adults ineligible due to employment	9	16	37	-75.68%



**Note:**

All data July 2014 and following will be broken out according to the new DFR region structure effective July 1 2014.