



DIVISION OF FAMILY RESOURCES

Elkhart County Monthly Management Report October 2019

State of Indiana

Eric Holcomb
Governor

Family and Social Services Administration

Jennifer Walthall, M.D.
Secretary

Division of Family Resources

Adrienne Shields
Director

For questions regarding data on this report contact:
office.Communications@fssa.IN.gov



State of Indiana

Published November 2019



DIVISION OF FAMILY RESOURCES

Monthly Management Report

Reporting Month: October 2019

Location: Elkhart County

TEMPORARY ASSISTANCE FOR NEEDY FAMILIES (TANF)

Child-Only and One-Parent Families	Oct 31, 2019	September 2019	October 2018	Annual Change
Number of families receiving TANF Grants	109	108	130	-16.15%
Total number of grant recipients	222	219	263	-15.59%
Number of adult grant recipients	29	31	42	-30.95%
Number of child grant recipients	193	188	221	-12.67%
Total payments	\$20,680	\$22,132	\$26,420	-21.73%
Average payment per case	\$189.72	\$204.93	\$203.23	-6.65%
Average payment per recipient	\$93.15	\$101.06	\$100.46	-7.27%
Number of cases with benefits reduced to zero	3	2	5	-40.00%
Number of recipients with benefits reduced to zero	8	8	12	-33.33%
Number of adult recipients with benefit reduced to zero	0	0	3	-100.00%
Number of child recipients with benefit reduced to zero	8	8	9	-11.11%

Two-Parent Families	Oct 31, 2019	September 2019	October 2018	Annual Change
Number of families receiving TANF Grants	7	7	5	40.00%
Total number of grant recipients	31	31	21	47.62%
Number of adult grant recipients	10	10	9	11.11%
Number of child grant recipients	21	21	12	75.00%
Total payments	\$1,576	\$1,576	\$1,051	49.95%
Average payment per case	\$225.14	\$225.14	\$210.20	7.11%
Average payment per recipient	\$50.84	\$50.84	\$50.05	1.58%
Number of cases with benefits reduced to zero	0	0	0	0%
Number of recipients with benefits reduced to zero	0	0	0	0%
Number of adult recipients with benefit reduced to zero	0	0	0	0%
Number of child recipients with benefit reduced to zero	0	0	0	0%

Note:

All data July 2014 and following will be broken out according to the new DFR region structure effective July 1 2014.

Source:



DIVISION OF FAMILY RESOURCES

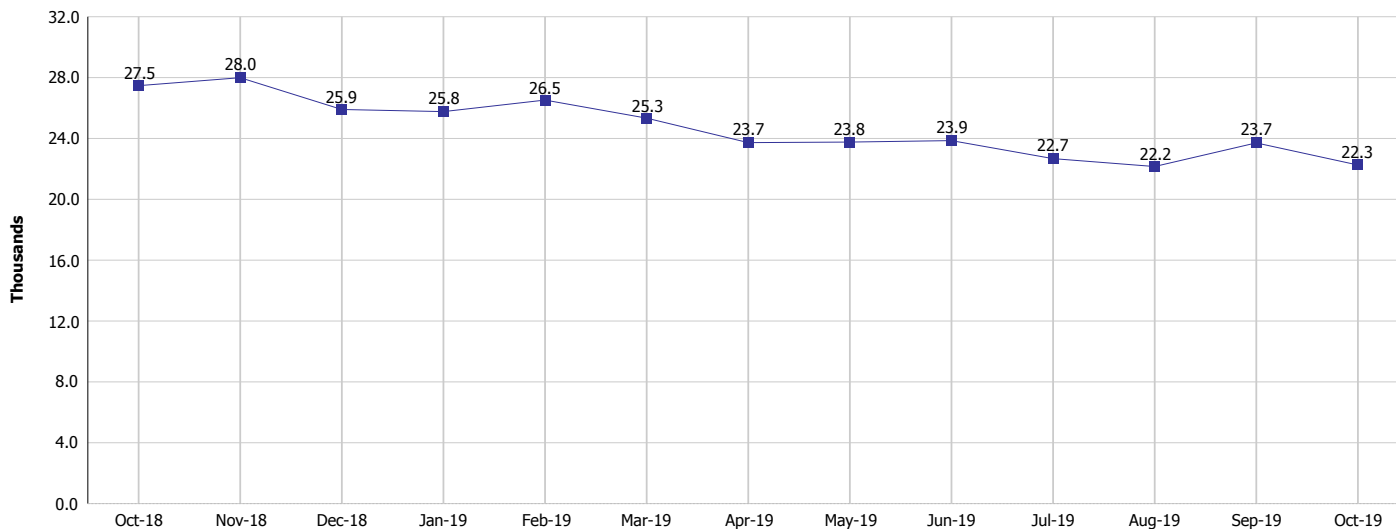
Monthly Management Report

Reporting Month: October 2019

Location: Elkhart County

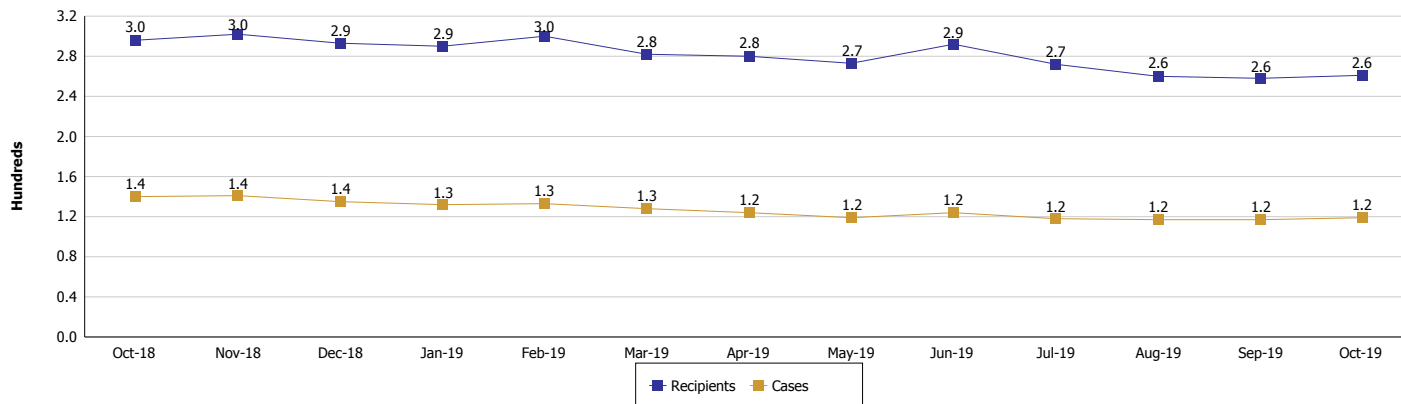
TEMPORARY ASSISTANCE FOR NEEDY FAMILIES (TANF)

TANF Regular And TANF Two-Parent Cash Assistance



TANF Cases and Recipients

(TANF Regular and TANF Two-Parent)



Note:

All data July 2014 and following will be broken out according to the new DFR region structure effective July 1 2014.



DIVISION OF FAMILY RESOURCES

Monthly Management Report

Reporting Month: October 2019

Location: Elkhart County

SUPPLEMENTAL NUTRITION ASSISTANCE PROGRAM (SNAP)

	October 2019	September 2019	October 2018	Annual Change
Total issuance	\$1,820,112	\$1,773,585	\$1,704,522	6.78%
Number of households receiving SNAP benefits	6,143	6,092	5,983	2.67%
Number of recipients	14,853	14,747	14,299	3.87%
Average issuance per household	\$296.29	\$291.13	\$284.89	4.00%
Average issuance per recipient	\$122.54	\$120.27	\$119.21	2.79%

Note:

All data July 2014 and following will be broken out according to the new DFR region structure effective July 1 2014.



DIVISION OF FAMILY RESOURCES

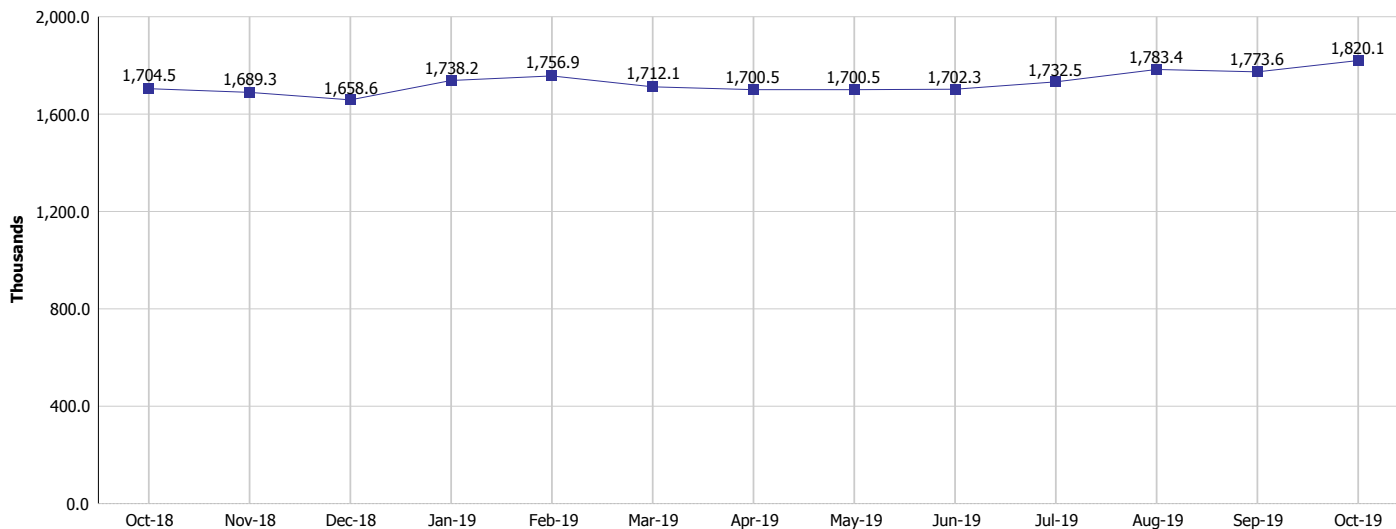
Monthly Management Report

Reporting Month: October 2019

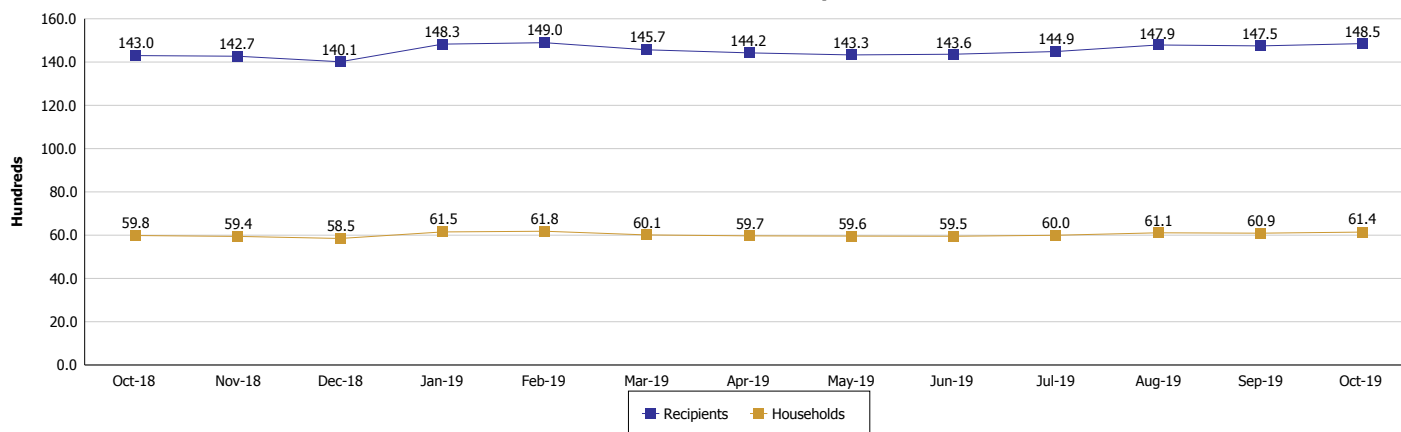
Location: Elkhart County

SUPPLEMENTAL NUTRITION ASSISTANCE PROGRAM (SNAP)

SNAP Issuance



SNAP Households and Recipients



Note:

All data July 2014 and following will be broken out according to the new DFR region structure effective July 1 2014.



DIVISION OF FAMILY RESOURCES

Monthly Management Report

Reporting Month: October 2019

Location: Elkhart County

HIP 2.0 and SNAP

	October 2019	September 2019	October 2018	Annual Change
Total HIP 2.0 Members	10,733	10,655	9,896	8.46%
HIP Members also SNAP Recipients	3,353	3,291	3,018	11.10%
Percentage HIP Members SNAP Recipients	31.2%	30.9%	30.5%	8.95%
HIP Members SNAP ABAWDs	97	104	104	-6.73%
Percentage HIP Members SNAP ABAWDs	0.9%	1.0%	1.1%	8.95%

Note:

All data July 2014 and following will be broken out according to the new DFR region structure effective July 1 2014.



DIVISION OF FAMILY RESOURCES

Monthly Management Report

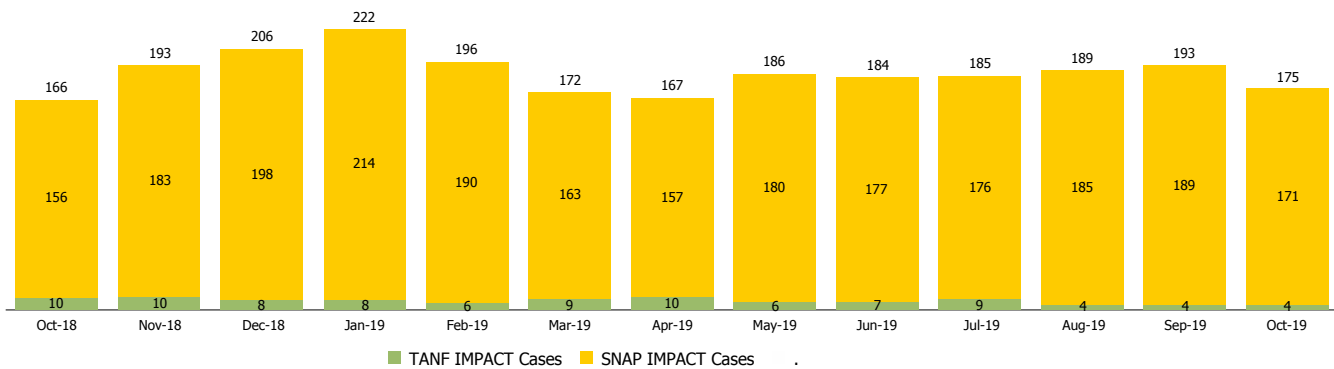
Reporting Month: October 2019

Location: Elkhart County

INDIANA MANPOWER PLACEMENT AND COMPREHENSIVE TRAINING (IMPACT)

	October 2019	September 2019	October 2018	Annual Change
Number of IMPACT cases	175	193	166	5.42%
Number of TANF IMPACT adults	4	4	10	-60.00%
Number of SNAP IMPACT Cases	171	189	156	9.62%
Total number of adults employed	33	31	29	13.79%
Number of TANF IMPACT adults newly employed (within past 30 days)	2	1	1	100.00%
Number of SNAP IMPACT adults employed	31	30	28	10.71%
Total number of adults ineligible due to employment	118	108	109	8.26%
Number of TANF adults ineligible due to employment	0	1	0	
Number of SNAP adults ineligible due to employment	118	107	109	8.26%

IMPACT Caseloads
(SNAP, TANF, Total Caseload)



Note:

All data July 2014 and following will be broken out according to the new DFR region structure effective July 1 2014.