



## DIVISION OF FAMILY RESOURCES

# Dubois County Monthly Management Report October 2019

### State of Indiana

Eric Holcomb  
Governor

### Family and Social Services Administration

Jennifer Walthall, M.D.  
Secretary

### Division of Family Resources

Adrienne Shields  
Director

For questions regarding data on this report contact:  
[office.Communications@fssa.IN.gov](mailto:office.Communications@fssa.IN.gov)



## State of Indiana

Published November 2019



## DIVISION OF FAMILY RESOURCES

### Monthly Management Report

Reporting Month: October 2019

Location: Dubois County

#### TEMPORARY ASSISTANCE FOR NEEDY FAMILIES (TANF)

| Child-Only and One-Parent Families                      | Oct 31, 2019 | September 2019 | October 2018 | Annual Change |
|---|--------------|----------------|--------------|---------------|
| Number of families receiving TANF Grants                | 15           | 16             | 15           | 0.00%         |
| Total number of grant recipients                        | 30           | 33             | 30           | 0.00%         |
| Number of adult grant recipients                        | 3            | 4              | 3            | 0.00%         |
| Number of child grant recipients                        | 27           | 29             | 27           | 0.00%         |
| Total payments  | \$2,987      | \$3,043        | \$3,050      | -2.07%        |
| Average payment per case                                | \$199.13     | \$190.19       | \$203.33     | -2.07%        |
| Average payment per recipient                           | \$99.57      | \$92.21        | \$101.67     | -2.07%        |
| Number of cases with benefits reduced to zero           | 0            | 0              | 0            | 0%            |
| Number of recipients with benefits reduced to zero      | 0            | 0              | 0            | 0%            |
| Number of adult recipients with benefit reduced to zero | 0            | 0              | 0            | 0%            |
| Number of child recipients with benefit reduced to zero | 0            | 0              | 0            | 0%            |

| Two-Parent Families                                     | Oct 31, 2019 | September 2019 | October 2018 | Annual Change |
|---|--------------|----------------|--------------|---------------|
| Number of families receiving TANF Grants                | 3            | 3              | 3            | 0.00%         |
| Total number of grant recipients                        | 14           | 14             | 14           | 0.00%         |
| Number of adult grant recipients                        | 5            | 5              | 5            | 0.00%         |
| Number of child grant recipients                        | 9            | 9              | 9            | 0.00%         |
| Total payments  | \$464        | \$464          | \$501        | -7.39%        |
| Average payment per case                                | \$154.67     | \$154.67       | \$167.00     | -7.39%        |
| Average payment per recipient                           | \$33.14      | \$33.14        | \$35.79      | -7.39%        |
| Number of cases with benefits reduced to zero           | 0            | 0              | 0            | 0%            |
| Number of recipients with benefits reduced to zero      | 0            | 0              | 0            | 0%            |
| Number of adult recipients with benefit reduced to zero | 0            | 0              | 0            | 0%            |
| Number of child recipients with benefit reduced to zero | 0            | 0              | 0            | 0%            |

**Note:**

All data July 2014 and following will be broken out according to the new DFR region structure effective July 1 2014.

Source:



# DIVISION OF FAMILY RESOURCES

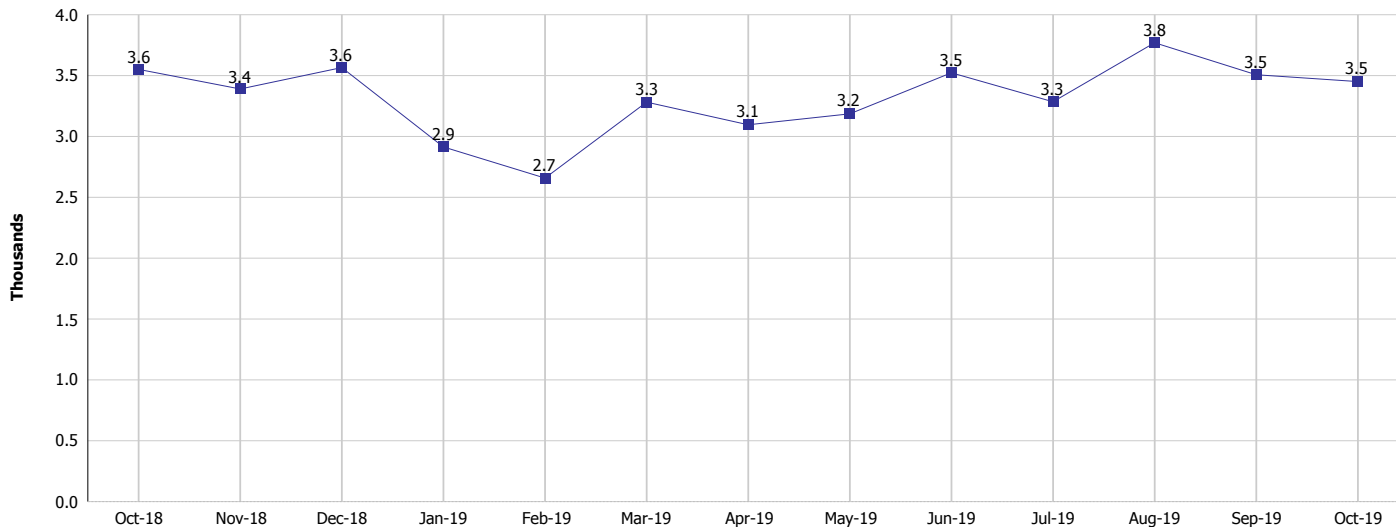
## Monthly Management Report

Reporting Month: October 2019

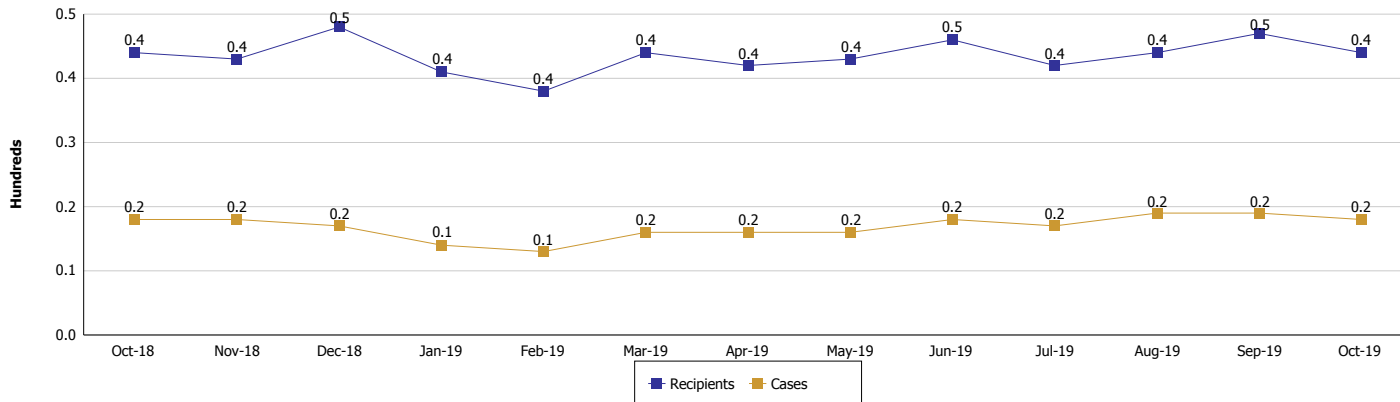
Location: Dubois County

### TEMPORARY ASSISTANCE FOR NEEDY FAMILIES (TANF)

#### TANF Regular And TANF Two-Parent Cash Assistance



#### TANF Cases and Recipients (TANF Regular and TANF Two-Parent)



**Note:**

All data July 2014 and following will be broken out according to the new DFR region structure effective July 1 2014.



## DIVISION OF FAMILY RESOURCES

### Monthly Management Report

Reporting Month: October 2019

Location: Dubois County

#### SUPPLEMENTAL NUTRITION ASSISTANCE PROGRAM (SNAP)

|  | October 2019 | September 2019 | October 2018 | Annual Change |
|--|--------------|----------------|--------------|---------------|
| Total issuance                               | \$138,881    | \$134,643      | \$138,009    | 0.63%         |
| Number of households receiving SNAP benefits | 627          | 610            | 620          | 1.13%         |
| Number of recipients                         | 1,326        | 1,287          | 1,300        | 2.00%         |
| Average issuance per household               | \$221.5      | \$220.73       | \$222.6      | -0.49%        |
| Average issuance per recipient               | \$104.74     | \$104.62       | \$106.16     | -1.34%        |

**Note:**

All data July 2014 and following will be broken out according to the new DFR region structure effective July 1 2014.



## DIVISION OF FAMILY RESOURCES

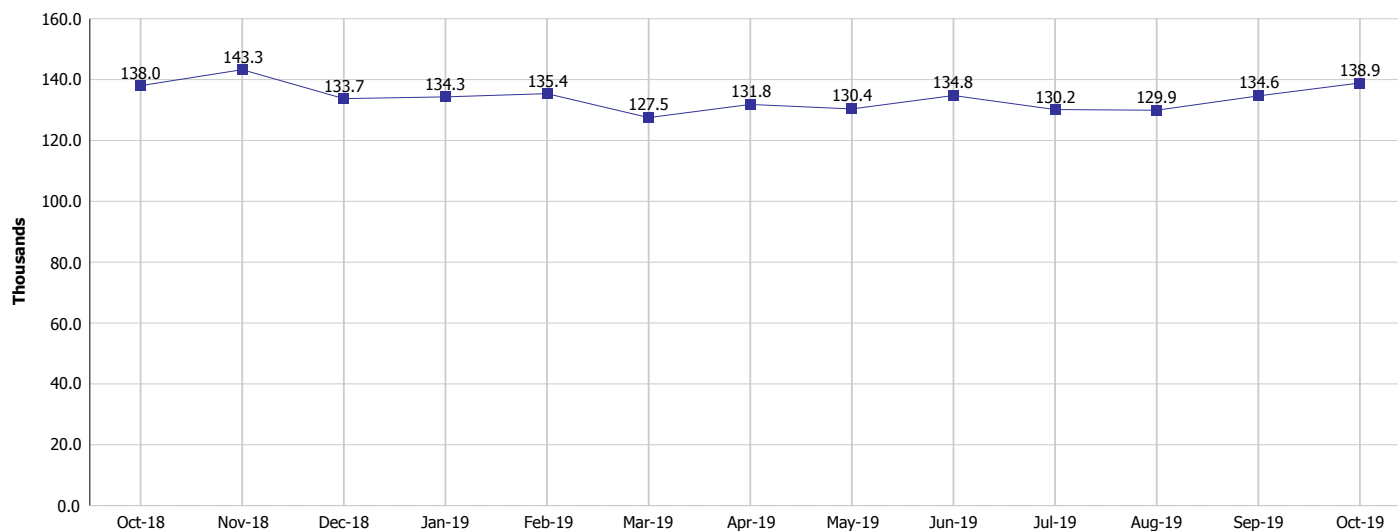
### Monthly Management Report

Reporting Month: October 2019

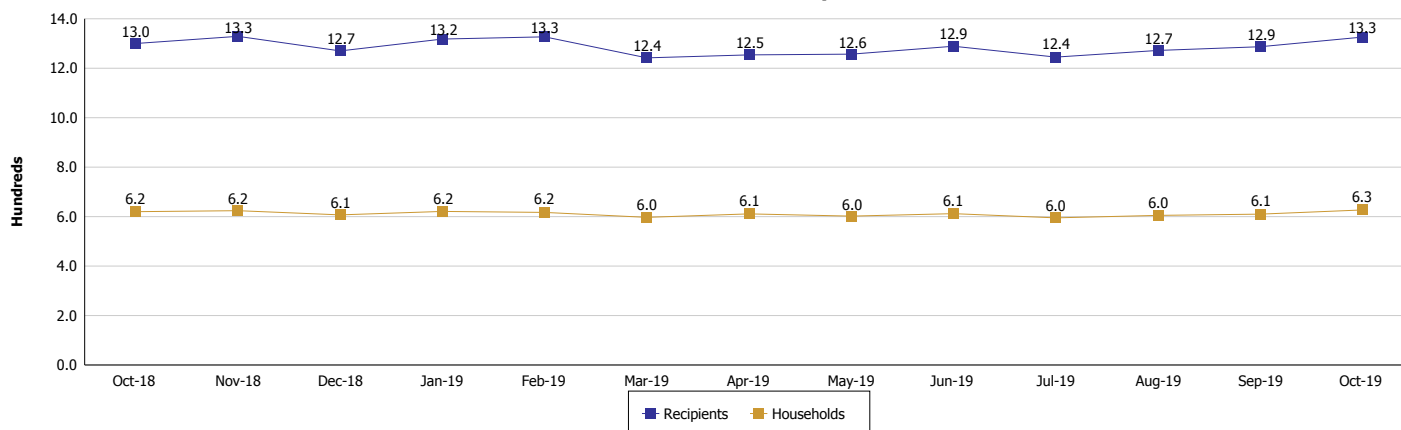
Location: Dubois County

#### SUPPLEMENTAL NUTRITION ASSISTANCE PROGRAM (SNAP)

#### SNAP Issuance



#### SNAP Households and Recipients



#### Note:

All data July 2014 and following will be broken out according to the new DFR region structure effective July 1 2014.



## DIVISION OF FAMILY RESOURCES

### Monthly Management Report

Reporting Month: October 2019

Location: Dubois County

#### HIP 2.0 and SNAP

|  | October 2019 | September 2019 | October 2018 | Annual Change |
|--|--------------|----------------|--------------|---------------|
| Total HIP 2.0 Members                  | 1,427        | 1,399          | 1,342        | 6.33%         |
| HIP Members also SNAP Recipients       | 290          | 281            | 279          | 3.94%         |
| Percentage HIP Members SNAP Recipients | 20.3%        | 20.1%          | 20.8%        | 5.71%         |
| HIP Members SNAP ABAWDs                | 6            | 5              | 9            | -33.33%       |
| Percentage HIP Members SNAP ABAWDs     | 0.4%         | 0.4%           | 0.7%         | 5.71%         |

**Note:**

All data July 2014 and following will be broken out according to the new DFR region structure effective July 1 2014.



## DIVISION OF FAMILY RESOURCES

### Monthly Management Report

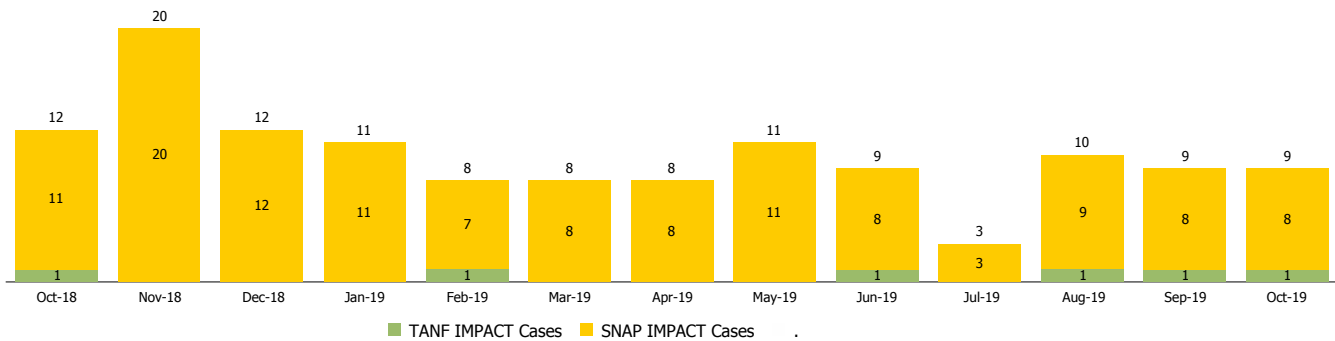
Reporting Month: October 2019

Location: Dubois County

#### INDIANA MANPOWER PLACEMENT AND COMPREHENSIVE TRAINING (IMPACT)

|   | October 2019 | September 2019 | October 2018 | Annual Change |
|---|--------------|----------------|--------------|---------------|
| Number of IMPACT cases  | 9            | 9              | 12           | -25.00%       |
| Number of TANF IMPACT adults                                      | 1            | 1              | 1            | 0.00%         |
| Number of SNAP IMPACT Cases                                       | 8            | 8              | 11           | -27.27%       |
| Total number of adults employed                                   | 4            | 0              | 3            | 33.33%        |
| Number of TANF IMPACT adults newly employed (within past 30 days) | 0            | 0              | 0            |               |
| Number of SNAP IMPACT adults employed                             | 4            | 0              | 3            | 33.33%        |
| Total number of adults ineligible due to employment               | 3            | 18             | 18           | -83.33%       |
| Number of TANF adults ineligible due to employment                | 0            | 0              | 0            |               |
| Number of SNAP adults ineligible due to employment                | 3            | 18             | 18           | -83.33%       |

**IMPACT Caseloads**  
(SNAP, TANF, Total Caseload)



**Note:**

All data July 2014 and following will be broken out according to the new DFR region structure effective July 1 2014.