



# Division of Family Resources

## Statewide Monthly Management Report October 2025

### State of Indiana

Mike Braun  
Governor

### Family and Social Services Administration

Mitch Roob  
Secretary

### Division of Family Resources

Sunshine Beam  
Director

For questions regarding data on this report contact:  
[office.Communications@fssa.IN.gov](mailto:office.Communications@fssa.IN.gov)



## State of Indiana

Published February 2026



# Division of Family Resources

## Monthly Management Report

Reporting Month: October 2025

Location: Statewide

### TEMPORARY ASSISTANCE FOR NEEDY FAMILIES (TANF)

Child-Only and One-Parent Families	October 2025	September 2025	October 2024	Annual Change
Number of families receiving TANF Grants	4,992	4,917	5,168	-3.41%
Total number of grant recipients	11,980	11,637	11,671	2.65%
Number of adult grant recipients	2,316	2,220	2,247	3.07%
Number of child grant recipients	9,664	9,417	9,424	2.55%
Total payments	\$2,039,771	\$2,002,943	\$2,026,780	0.64%
Average payment per case	\$408.61	\$407.35	\$392.18	4.19%
Average payment per recipient	\$170.26	\$172.12	\$173.66	-1.95%
Number of cases with benefits reduced to zero	104	98	111	-6.31%
Number of recipients with benefits reduced to zero	205	188	206	-0.49%
Number of adult recipients with benefit reduced to zero	24	23	28	-14.29%
Number of child recipients with benefit reduced to zero	181	165	178	1.69%

Pregnancy TANF Families	October 2025	September 2025	October 2024	Annual Change
Number of families receiving TANF Grants	132	144	116	13.79%
Total number of grant recipients	132	144	116	13.79%
Total payments	\$32,234.00	\$35,368.00	\$28,657.00	12.48%
Average payment per case	\$244.20	\$245.61	\$247.04	-1.15%
Average payment per recipient	\$244.20	\$245.61	\$247.04	-1.15%
Number of cases with benefits reduced to zero	1	2	1	0.00%
Number of recipients with benefits reduced to zero	1	2	1	0.00%



# Division of Family Resources

## Monthly Management Report

Two-Parent Families	October 2025	September 2025	October 2024	Annual Change
Number of families receiving TANF Grants	127	125	599	-78.80%
Total number of grant recipients	555	546	2,276	-75.62%
Number of adult grant recipients	243	245	1,193	-79.63%
Number of child grant recipients	312	301	1,083	-71.19%
Total payments	\$72,696	\$74,056	\$332,573	-78.14%
Average payment per case	\$572.41	\$592.45	\$555.21	3.10%
Average payment per recipient	\$130.98	\$135.63	\$146.12	-10.36%
Number of cases with benefits reduced to zero	1	3	3	-66.67%
Number of recipients with benefits reduced to zero	3	13	10	-70.00%
Number of adult recipients with benefit reduced to zero	2	6	6	-66.67%
Number of child recipients with benefit reduced to zero	1	7	4	-75.00%

Note: The two-parent case count includes cases in which a parent living in the home is excluded from receiving TANF benefits but whose income is used in the TANF eligibility determination.



# Division of Family Resources

## Monthly Management Report

Reporting Month: October 2025

Location: Statewide

### TANF - APPLICATIONS

	October 2025	September 2025	October 2024	Annual Change
<b>Number of Applications</b>	5,184	6,095	7,829	-33.78%



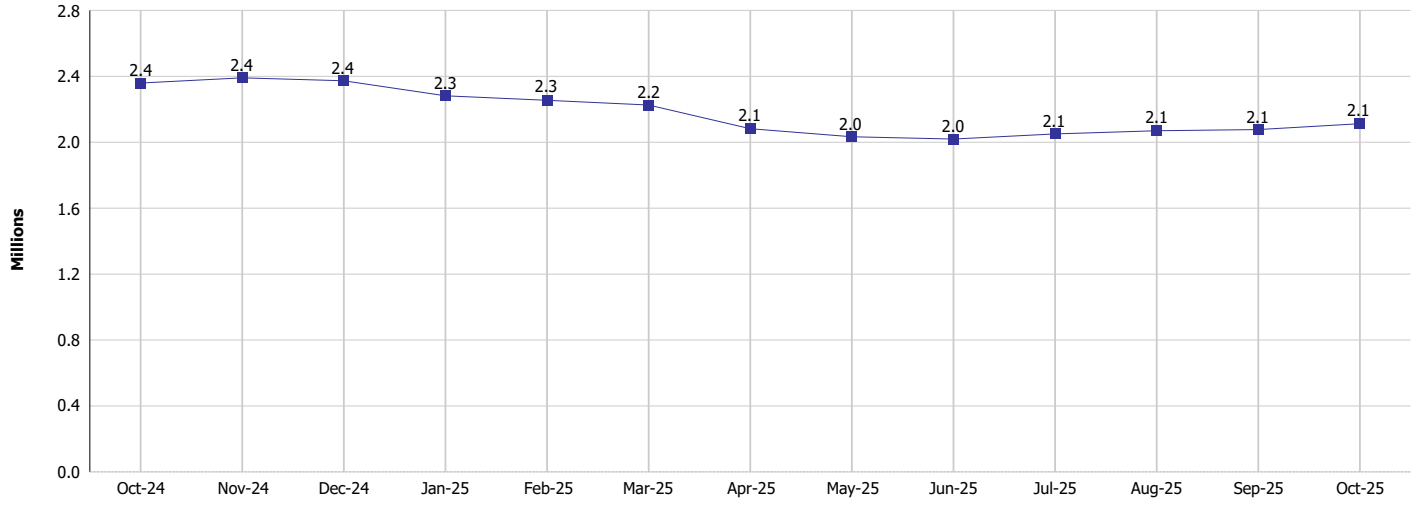
## Monthly Management Report

Reporting Month: October 2025

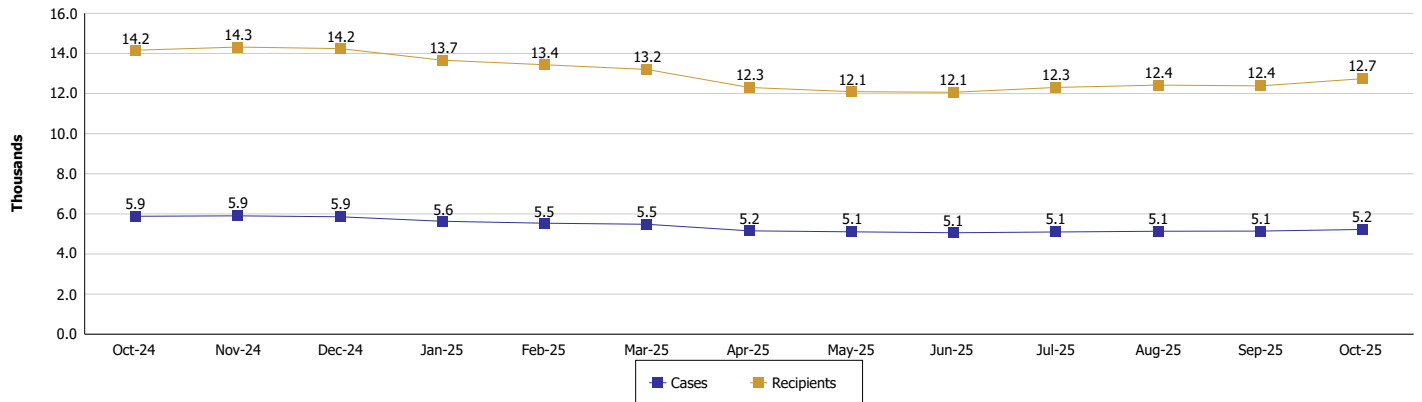
Location: Statewide

### TEMPORARY ASSISTANCE FOR NEEDY FAMILIES (TANF)

#### TANF Cash Assistance (TANF Regular and TANF Two-Parent)



#### TANF Cases and Recipients (TANF Regular and TANF Two-Parent)





# Division of Family Resources

## Monthly Management Report

Reporting Month: October 2025

Location: Statewide

### SUPPLEMENTAL NUTRITION ASSISTANCE PROGRAM (SNAP)

	October 2025	September 2025	October 2024	Annual Change
Total issuance	\$113,230,343	\$111,460,740	\$122,775,640	-7.77%
Number of households receiving SNAP benefits	273,834	273,867	290,103	-5.61%
Number of recipients	570,325	571,594	609,551	-6.44%
Average issuance per household	\$413.50	\$406.99	\$423.21	-2.30%
Average issuance per recipient	\$198.54	\$195.00	\$201.42	-1.43%
Number of Applications	31,058	35,722	43,271	-28.22%

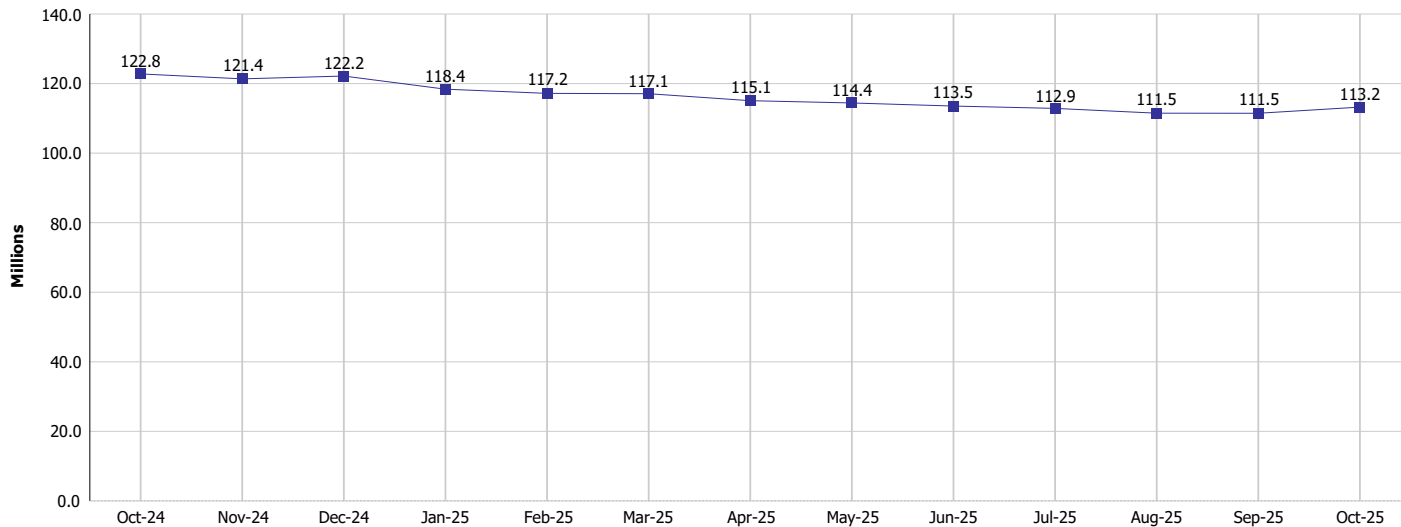


Monthly Management Report

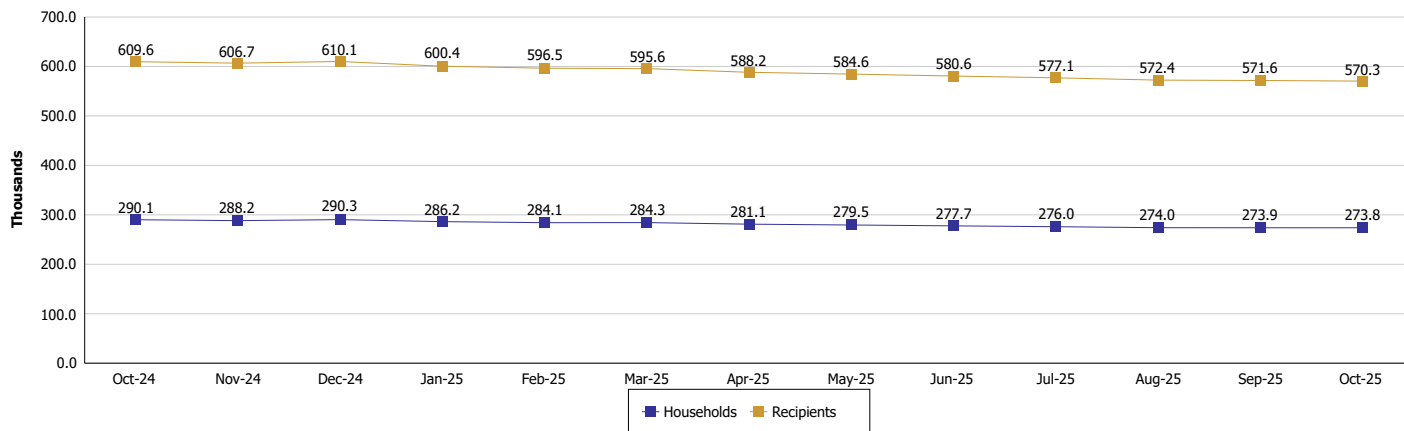
Reporting Month: October 2025 Location: Statewide

SUPPLEMENTAL NUTRITION ASSISTANCE PROGRAM (SNAP)

SNAP Issuance



SNAP Households and Recipients





# Division of Family Resources

## Monthly Management Report

Reporting Month: October 2025

Location: Statewide

### HIP 2.0 and SNAP

	October 2025	September 2025	October 2024	Annual Change
Total HIP 2.0 Members	635,811	643,527	758,837	-16.21%
HIP Members also SNAP Recipients	168,802	168,838	183,442	-7.98%
Percentage HIP Members SNAP Recipients	26.5%	26.2%	24.2%	2.37
HIP Members SNAP ABAWDs	4,336	4,377	8,986	-51.75%
Percentage HIP Members SNAP ABAWDs	0.7%	0.7%	1.2%	-0.5



# Division of Family Resources

## Monthly Management Report

Reporting Month: October 2025

Location: Statewide

### INDIANA MANPOWER PLACEMENT AND COMPREHENSIVE TRAINING (IMPACT)

	October 2025	September 2025	October 2024	Annual Change
Number of IMPACT cases	762	725	561	35.83%
Number of TANF IMPACT adults	275	258	211	30.33%
Number of SNAP IMPACT Cases	487	467	350	39.14%
Total number of adults employed	1,553	1,407	1,520	2.17%
Number of TANF IMPACT adults newly employed (within past 30 days)	75	82	83	-9.64%
Number of SNAP IMPACT adults employed	1,478	1,325	1,437	2.85%
Total number of adults ineligible due to employment	1,710	2,116	1,823	-6.20%
Number of TANF adults ineligible due to employment	48	39	86	-44.19%
Number of SNAP adults ineligible due to employment	1,662	2,077	1,737	-4.32%

**IMPACT Caseloads**  
(SNAP, TANF, Total Caseload)

