



Division of Family Resources

Statewide Monthly Management Report November 2025

State of Indiana

Mike Braun
Governor

Family and Social Services Administration

Mitch Roob
Secretary

Division of Family Resources

Sunshine Beam
Director

For questions regarding data on this report contact:
office.Communications@fssa.IN.gov



State of Indiana

Published March 2026



Division of Family Resources

Monthly Management Report

Reporting Month: November 2025

Location: Statewide

TEMPORARY ASSISTANCE FOR NEEDY FAMILIES (TANF)

Child-Only and One-Parent Families	November 2025	October 2025	November 2024	Annual Change
Number of families receiving TANF Grants	4,851	4,992	5,214	-6.96%
Total number of grant recipients	11,590	11,980	11,875	-2.40%
Number of adult grant recipients	2,214	2,316	2,337	-5.26%
Number of child grant recipients	9,376	9,664	9,538	-1.70%
Total payments	\$1,986,216.00	\$2,039,771.00	\$2,068,748.00	-3.99%
Average payment per case	\$409.44	\$408.61	\$396.77	3.19%
Average payment per recipient	\$171.37	\$170.26	\$174.21	-1.63%
Number of cases with benefits reduced to zero	114	104	114	0.00%
Number of recipients with benefits reduced to zero	235	205	219	7.31%
Number of adult recipients with benefit reduced to zero	33	24	34	-2.94%
Number of child recipients with benefit reduced to zero	202	181	185	9.19%

Pregnancy TANF Families	November 2025	October 2025	November 2024	Annual Change
Number of families receiving TANF Grants	128	132	124	3.23%
Total number of grant recipients	128	132	124	3.23%
Total payments	\$31,088.00	\$32,234.00	\$30,669.00	1.37%
Average payment per case	\$242.88	\$244.20	\$247.33	-1.80%
Average payment per recipient	\$242.88	\$244.20	\$247.33	-1.80%
Number of cases with benefits reduced to zero	0	1	3	-100.00%
Number of recipients with benefits reduced to zero	0	1	3	-100.00%



Division of Family Resources

Monthly Management Report

Two-Parent Families	November 2025	October 2025	November 2024	Annual Change
Number of families receiving TANF Grants	119	127	572	-79.20%
Total number of grant recipients	510	555	2,215	-76.98%
Number of adult grant recipients	227	243	1,135	-80.00%
Number of child grant recipients	283	312	1,080	-73.80%
Total payments	\$66,132.00	\$72,696.00	\$322,067.00	-79.47%
Average payment per case	\$555.73	\$572.41	\$563.05	-1.30%
Average payment per recipient	\$129.67	\$130.98	\$145.40	-10.82%
Number of cases with benefits reduced to zero	4	1	3	33.33%
Number of recipients with benefits reduced to zero	18	3	10	80.00%
Number of adult recipients with benefit reduced to zero	8	2	6	33.33%
Number of child recipients with benefit reduced to zero	10	1	4	150.00%

Note: The two-parent case count includes cases in which a parent living in the home is excluded from receiving TANF benefits but whose income is used in the TANF eligibility determination.



Division of Family Resources

Monthly Management Report

Reporting Month: November 2025

Location: Statewide

TANF - APPLICATIONS

	November 2025	October 2025	November 2024	Annual Change
Number of Applications	4,073	5,184	6,276	-35.10%



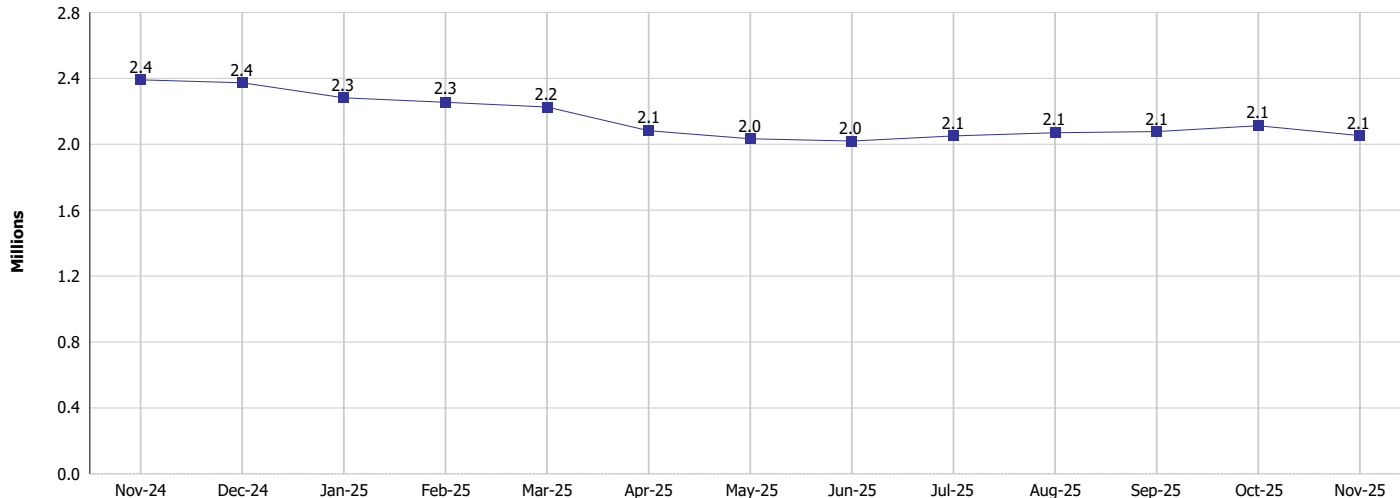
Monthly Management Report

Reporting Month: November 2025

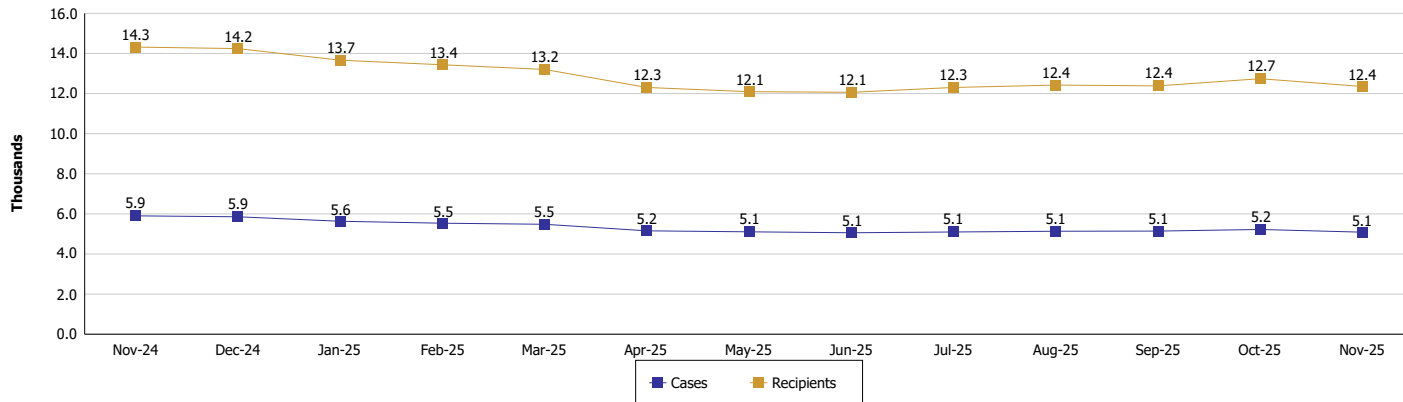
Location: Statewide

TEMPORARY ASSISTANCE FOR NEEDY FAMILIES (TANF)

TANF Cash Assistance (TANF Regular and TANF Two-Parent)



TANF Cases and Recipients (TANF Regular and TANF Two-Parent)





Division of Family Resources

Monthly Management Report

Reporting Month: November 2025

Location: Statewide

SUPPLEMENTAL NUTRITION ASSISTANCE PROGRAM (SNAP)

	November 2025	October 2025	November 2024	Annual Change
Total issuance	\$110,807,915	\$113,230,343	\$121,359,719	-8.69%
Number of households receiving SNAP benefits	268,746	273,834	288,234	-6.76%
Number of recipients	557,432	570,325	606,670	-8.12%
Average issuance per household	\$412.31	\$413.50	\$421.05	-2.07%
Average issuance per recipient	\$198.78	\$198.54	\$200.04	-0.63%
Number of Applications	23,711	31,058	36,470	-34.98%

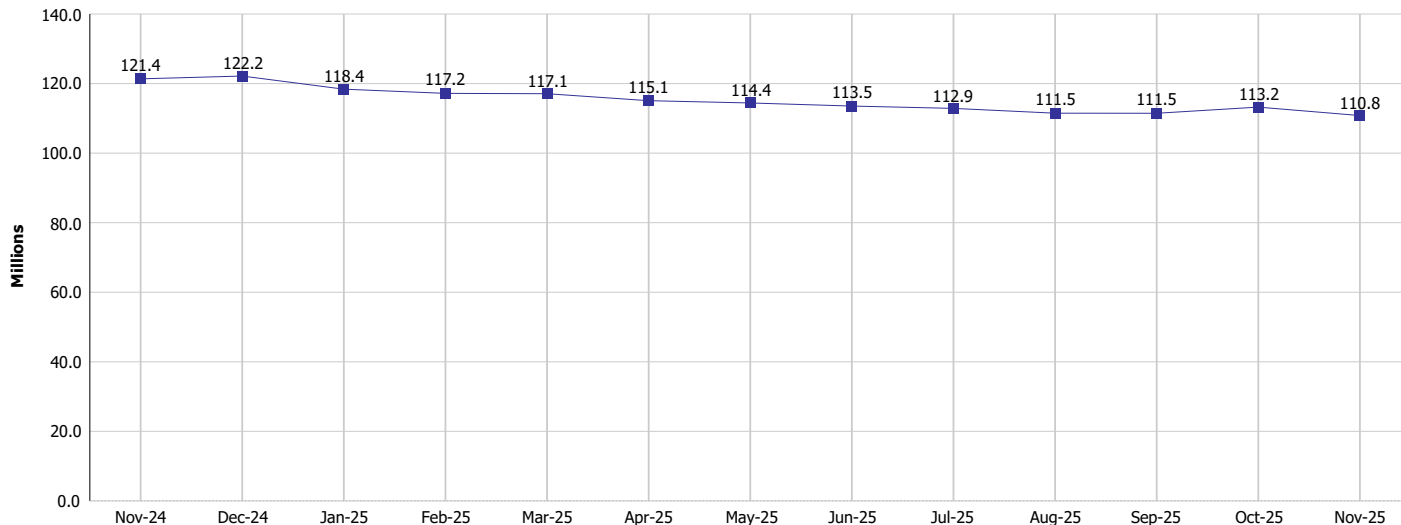


Monthly Management Report

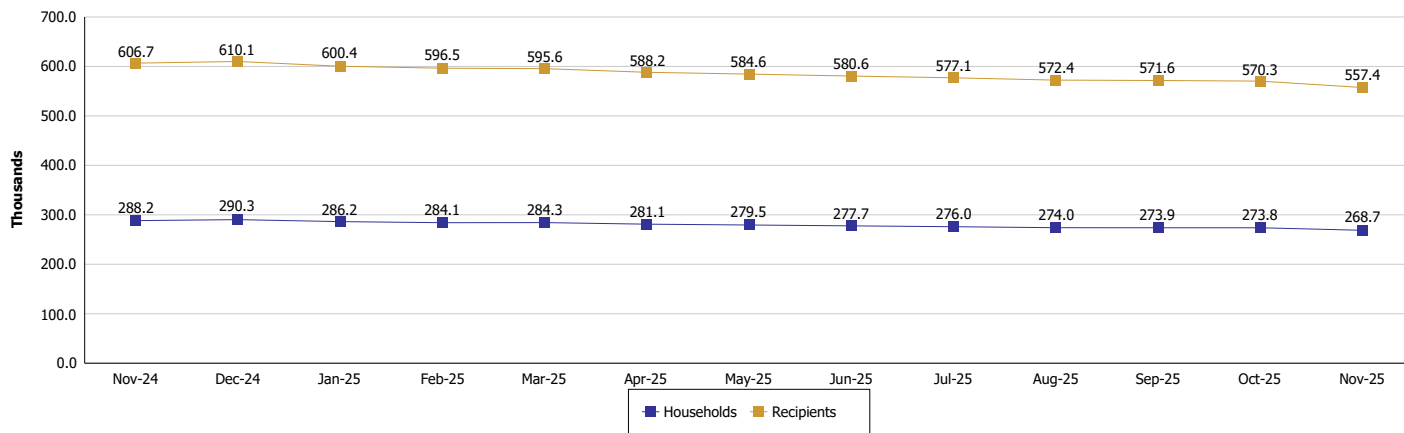
Reporting Month: November 2025 Location: Statewide

SUPPLEMENTAL NUTRITION ASSISTANCE PROGRAM (SNAP)

SNAP Issuance



SNAP Households and Recipients





Division of Family Resources

Monthly Management Report

Reporting Month: November 2025

Location: Statewide

HIP 2.0 and SNAP

	November 2025	October 2025	November 2024	Annual Change
Total HIP 2.0 Members	616,432	635,811	755,824	-18.44%
HIP Members also SNAP Recipients	160,686	168,802	181,730	-11.58%
Percentage HIP Members SNAP Recipients	26.1%	26.5%	24.0%	2.02
HIP Members SNAP ABAWDs	3,574	4,336	8,124	-56.01%
Percentage HIP Members SNAP ABAWDs	0.6%	0.7%	1.1%	-0.5



Division of Family Resources

Monthly Management Report

Reporting Month: November 2025

Location: Statewide

INDIANA MANPOWER PLACEMENT AND COMPREHENSIVE TRAINING (IMPACT)

	November 2025	October 2025	November 2024	Annual Change
Number of IMPACT cases	594	762	483	22.98%
Number of TANF IMPACT adults	238	275	195	22.05%
Number of SNAP IMPACT Cases	356	487	288	23.61%
Total number of adults employed	1,207	1,553	1,463	-17.50%
Number of TANF IMPACT adults newly employed (within past 30 days)	67	75	96	-30.21%
Number of SNAP IMPACT adults employed	1,140	1,478	1,367	-16.61%
Total number of adults ineligible due to employment	1,772	1,710	1,691	4.79%
Number of TANF adults ineligible due to employment	38	48	104	-63.46%
Number of SNAP adults ineligible due to employment	1,734	1,662	1,587	9.26%

IMPACT Caseloads
(SNAP, TANF, Total Caseload)

