



MONTHLY MANAGEMENT REPORT
Division of Family Resources
March 2009

March 2009

State of Indiana
Mitchell E. Daniels, Jr.
Governor

**Family and Social Services
Administration**

Anne Murphy
Secretary

Division of Family Resources

Cathy Boggs
Director

For question or to obtain a hard copy of this report contact:
DFRReportsandStatistics@fssa.IN.gov



State of Indiana

Published May 2009



Division of Family Resources

Monthly Management Report

Statewide

March 2009

TEMPORARY ASSISTANCE FOR NEEDY FAMILIES (TANF)

Source: FSSA Reports, Statistics, ICES

TANF - REGULAR	March 2009	February 2009	March 2008	Annual Change
Number of families receiving TANF grants	35,284	35,735	37,218	-5.20%
Total number of grant recipients	92,331	93,663	98,288	-6.06%
Number of adult grant recipients	27,961	28,388	29,762	-6.05%
Number of child grant recipients	64,370	65,275	68,526	-6.06%
Total payments	\$7,465,348	\$7,570,726	\$7,737,326	-3.52%
Average payment per case	\$211.58	\$211.86	\$207.89	1.77%
Average payment per person	\$80.85	\$80.83	\$78.72	2.71%
Number of TANF cases with benefits reduced to zero	3,237	3,396	4,007	-19.22%
Number of TANF recipients with benefits reduced to zero	9,364	9,772	11,625	-19.45%
Number of adult recipients	3,072	3,229	3,851	-20.23%
Number of child recipients	6,292	6,543	7,774	-19.06%
TANF - UNEMPLOYED PARENT				
Number of families receiving TANF-UP grants	5,192	5,066	3,700	40.32%
Number of recipients receiving TANF-UP grants	20,933	20,369	14,979	39.75%
Number of adult grant recipients	9,545	9,269	6,704	42.38%
Number of child grant recipients	11,388	11,100	8,275	37.62%
Total payments	\$1,465,894	\$1,429,491	\$1,028,821	42.48%
Average payment per case	\$282.34	\$282.17	\$278.06	1.54%
Average payment per person	\$70.03	\$70.18	\$68.68	1.96%
Number of TANF-UP cases with benefits reduced to zero	451	461	417	8.15%
Number of TANF-UP recipients with benefits reduced to zero	1,874	1,917	1,737	7.89%
Number of adult recipients	855	880	805	6.21%
Number of child recipients	1,019	1,037	932	9.33%

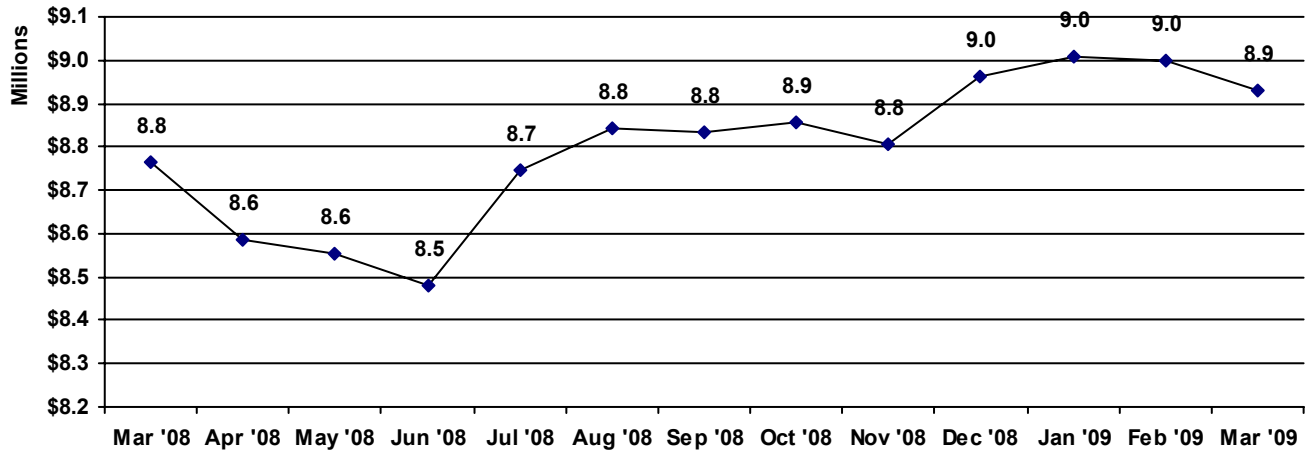
All data presented in this report was collected at the end of the reporting month.



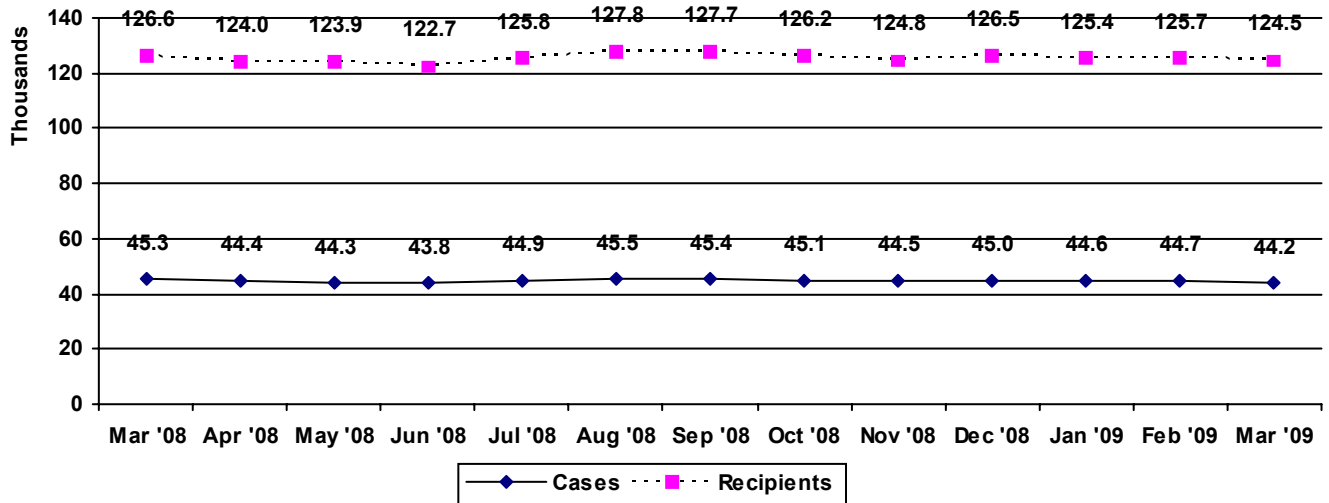
Division of Family Resources Monthly Management Report Statewide March 2009

TEMPORARY ASSISTANCE FOR NEEDY FAMILIES (TANF) Source: FSSA Reports Statistics, ICES

TANF Regular And TANF UP Cash Assistance



TANF Cases and Recipients (TANF Regular and TANF UP)



All data presented in this report was collected at the end of the reporting month.



**Division of Family Resources
Monthly Management Report
Statewide
March 2009**

FOOD STAMPS

Source: FSSA Reports Statistics, ICES

	March 2009	February 2009	March 2008	Annual % Change
Total stamps issued	\$80,130,830	\$78,453,082	\$62,822,559	27.55%
Number of households receiving stamps	296,245	290,033	263,483	12.43%
Number of recipients	694,052	679,420	611,969	13.41%
Average stamps per household	\$270.49	\$270.50	\$238.43	13.45%
Average stamps per recipient	\$115.45	\$115.47	\$102.66	12.47%

FOOD STAMPS ERROR RATES

Source: FSSA Reports Statistics, ICES

	December 2008	November 2008	October 2008	Cumulative FFY 2008
FFY Cumulative Positive Error Rate	9.20%	9.75%	6.36%	7.24%
Monthly Positive Error Rate	8.12%	13.33%	6.36%	NA
FFY Cumulative Negative Error Rate	20.30%	19.69%	15.71%	12.18%
Monthly Negative Error Rate	21.43%	17.54%	15.71%	NA

Error Rate data is reported by the state before the federal agency has accepted and finalized the results. This rate is subject to revision. Monthly numbers are taken from the end of the month totals. Error status of cases may be changed by either State or Federal Review process, which would cause a change that might not be reflected in the previous monthly numbers.

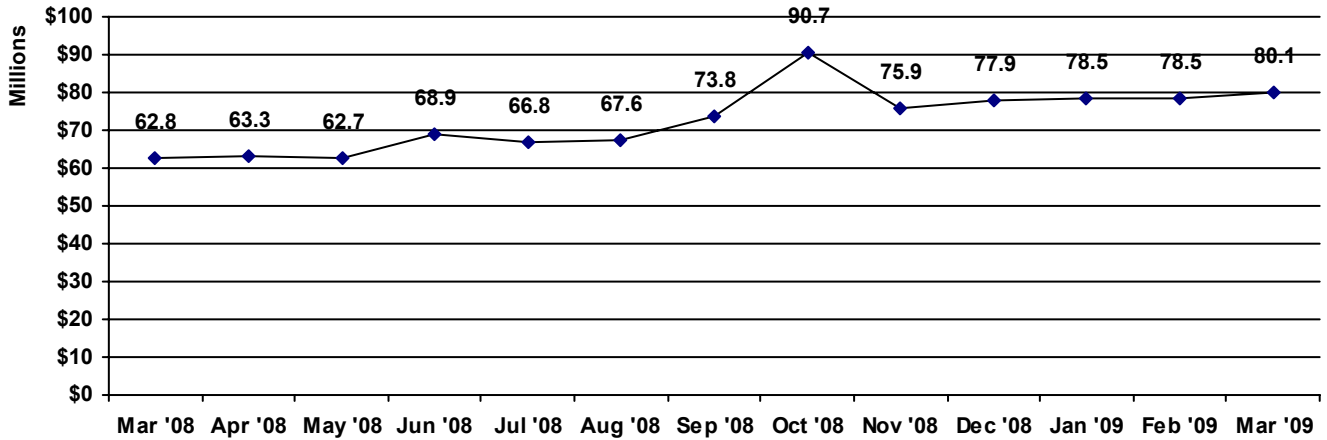
All data presented in this report was collected at the end of the reporting month.



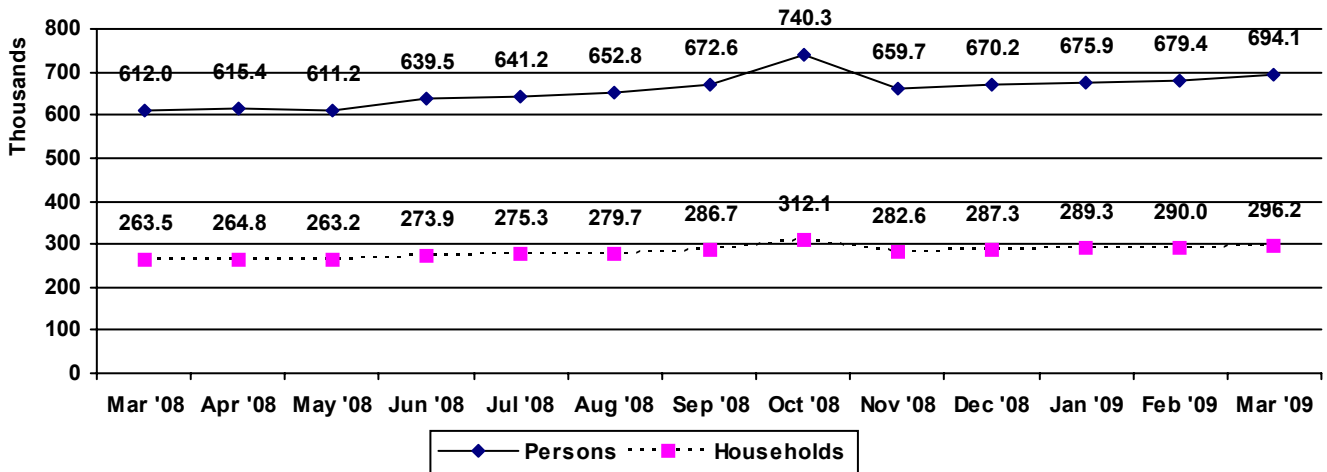
Division of Family Resources Monthly Management Report Statewide March 2009

FOOD STAMPS Source: FSSA Reports Statistics, ICES

Food Stamps Issued



Food Stamps Households and Recipients



All data presented in this report was collected at the end of the reporting month.



Division of Family Resources

Monthly Management Report

Statewide

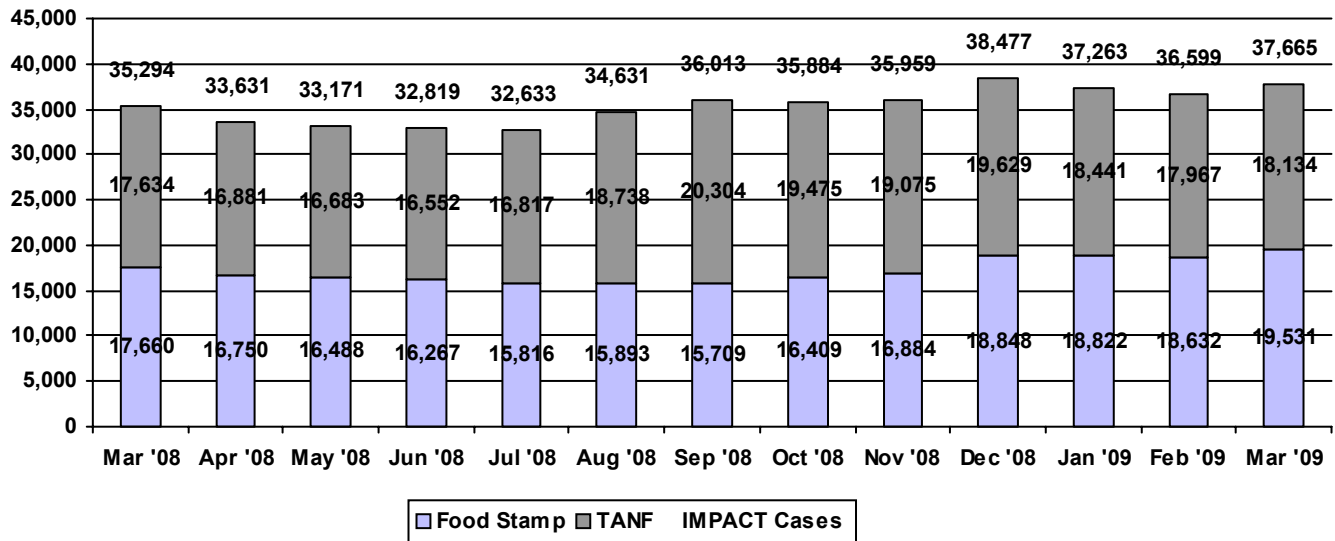
March 2009

IMPACT

Source: FSSA Reports Statistics; FSSA Data Warehouse Project (Employed data)

	March 2009	February 2009	March 2008	Annual % Change
Number of IMPACT cases (See IMPACT note)	37,665	36,599	35,294	6.72%
Number of TANF IMPACT Cases	18,134	17,967	17,634	2.84%
Number of Food Stamp Cases	19,531	18,632	17,660	10.59%
Total number of adults employed	2,861	2,175	3,348	-14.55%
Number of TANF IMPACT adults employed	1,127	832	1,396	-19.27%
Number of Food Stamp adults employed	1,734	1,343	1,952	-11.17%
Total number of adults ineligible due to employment	723	666	832	-13.10%
Number of TANF adults	125	129	168	-25.60%
Number of Food Stamp adults	598	537	664	-9.94%

IMPACT Caseloads



Prior to October 2003, IMPACT caseloads did not include Employed or Sanction clients. Beginning October 2003, ICES programming changes allowed the capturing of this data. April 2007 there was a change in the data collection procedure causing the employed numbers to be low for that month.

All data presented in this report was collected at the end of the reporting month.

Prepared by:
Reports and Statistics

Published:
May 2009



Division of Family Resources

Monthly Management Report

Statewide

March 2009

CHILD CARE

Source: DFR Child Development, CCDF-Prodnew

	March 2009	February 2009	March 2008	Annual % Change
Total Subsidized Child Care Payments	\$18,807,441	\$12,080,957	\$18,264,046	2.98%
Number of CCDF Children	36,458	35,041	36,338	0.33%
Number of Licensed Child Care Homes	3,033	3,040	3,035	-0.07%
Licensed Capacity of Child Care Homes	37,466	37,586	37,323	0.38%
Number of Licensed Child Care Centers	602	603	604	-0.33%
Licensed Capacity of Child Care Centers	62,505	62,467	61,495	1.64%
Number of Registered Ministries (Capacity not regulated)	697	698	664	4.97%

All data presented in this report was collected at the end of the reporting month.



Division of Family Resources
Monthly Management Report
Statewide

March 2009

State of Indiana
Family and Social Services Administration

Monthly Management Report
Definitions of Elements

TANF

The Temporary Assistance for Needy Families (TANF) Program provides cash payments to eligible families with children.

TANF Regular

Number of Families

Total number of households or family units participating in TANF- Regular and TANF-I (Incapacitated Parent). It does not include TANF - UP (Unemployed Parent).

Recipient

A person receiving TANF benefits. There may be more than one recipient in a TANF case.

"Adult" recipient is a person 21 years or older or a person 18 or over with at least one child.

"Child" recipient is an unmarried person under 18 deprived of parental support and living with a specified relative.

Payments

Total cash assistance dollars paid to TANF recipients during the month.

Average payment per Case

Total TANF payments divided by the number of TANF cases receiving a grant. A "case" is a household or family unit participating in TANF- Regular and TANF-I (Incapacitated Parent). It does not include TANF - UP (Unemployed Parent).

Average payment per Recipient

Total TANF payments divided by the number of TANF recipients receiving a grant.

Cases with benefits reduced to zero

TANF families whose cash assistance has been reduced to zero due to income or penalty.

TANF UP (Unemployed Parent Program)

Number of Families

Total number of households or family units participating in TANF UP.

Recipient

A person receiving TANF benefits. There may be more than one recipient in a TANF case.

"Adult" recipient is a person 21 years or older or a person 18 or over with at least one child.

"Child" recipient is an unmarried person under 18 deprived of parental support and living with a specified relative.

Payments

Total cash assistance dollars paid to TANF recipients during the month.

Average payment per Case

Total TANF payments divided by the number of TANF cases receiving a grant. A "case" is a household or family unit participating in TANF UP.

Average payment per Recipient

Total TANF payments divided by the number of TANF recipients receiving a grant.

Cases with benefits reduced to zero

TANF families whose cash assistance has been reduced to zero due to income or penalty.

All data presented in this report was collected at the end of the reporting month.



Division of Family Resources
Monthly Management Report
Statewide
March 2009

State of Indiana
Family and Social Services Administration

Monthly Management Report
Definitions of Elements

Food Stamps (FS)

Indiana's Food Stamp Program helps eligible low income families supplement their food purchasing dollars with food stamp coupons.

Total Stamps Issued

Dollar value of total food stamps issued during the month.

Total Households

The number of households participating in the FS program.

Total Persons

The number of persons participating in the FS program.

Average Stamps per Household

The total value of food stamps divided by the number of households.

Average Stamps per Person

The total value of food stamps divided by the total number of recipients.

Positive Error Rate

Dollars paid in error divided by total dollars.

Negative Error Rate

Number of erroneously closed or denied cases divided by total number of cases in sample.

Unregressed

Error rate reported by the state before the federal agency has accepted and finalized the results. This rate is subject to revision.

Employment and Training

IMPACT assists TANF/Food Stamp families to become self-sufficient by helping to provide education, training, and job opportunities and overcoming personal barriers to employment.

Total IMPACT Cases

The total number of active cases with IMPACT activities during the month.

IMPACT-TANF

The number of active TANF cases with IMPACT activities during the month.

IMPACT-Food Stamp

The number of active Food Stamp cases with IMPACT activities during the month.

Total Adults Employed

The total number of IMPACT adults employed during the month.

TANF Adults Employed

The total number of TANF-IMPACT participants that were reported employed during the month.

Food Stamp Adults Employed

The total number of FS-IMPACT participants that were reported employed during the month.

Total Adults ineligible due to employment

The total number of IMPACT adults cases closed during the month because of income from employment.

All data presented in this report was collected at the end of the reporting month.



Division of Family Resources
Monthly Management Report
Statewide
March 2009

State of Indiana
Family and Social Services Administration

**Monthly Management Report
Definitions of Elements**

Child Care

Indiana's child care program provides child caring services reimbursement to eligible families participating in IMPACT, transitioning out of the TANF program, or are low income families at risk of becoming eligible for TANF.

Total Subsidized Child Care Payments

The total value of Child Care Development Fund (CCDF) Child Care Voucher Payments and CCDF Child Care Contract Payments.

Licensed Capacity of Child Care Homes

The number and licensed capacity of licensed day care homes.

Licensed Capacity of Child Care Centers

The number and licensed capacity of licensed day care centers.

Registered Ministries

The number of registered ministries with child caring facilities. The capacity of registered ministries is not regulated.

All data presented in this report was collected at the end of the reporting month.



Division of Family Resources
Monthly Management Report
Statewide
March 2009

State of Indiana
Family and Social Services Administration

Monthly Management Report
Definitions of Elements

Data Source Systems

CCDF – Prodnew

State and contractor developed database collecting child care services data.

FSSA Data Warehouse

A data coordinating entity established to

prepare federal TANF reports.

ICES

Indiana Client Eligibility System is a federally certified online, integrated, eligibility system that supports the administration of TANF, Food Stamps, IMPACT, and Medicaid Eligibility.

All data presented in this report was collected at the end of the reporting month.