



**MONTHLY MANAGEMENT REPORT**  
Division of Family Resources  
November 2007

# November 2007

**State of Indiana**  
Mitchell E. Daniels, Jr.  
Governor

**Family and Social Services  
Administration**

E. Mitchell Roob Jr.  
Secretary

**Division of Family Resources**

Zach Main  
Director

For question or to obtain a hard copy of this report contact:  
[DFRReportsandStatistics@fssa.IN.gov](mailto:DFRReportsandStatistics@fssa.IN.gov)



**State of Indiana**

Published January 2008



# Division of Family Resources

## Monthly Management Report

### Statewide

### November 2007

#### TEMPORARY ASSISTANCE FOR NEEDY FAMILIES (TANF)

Source: FSSA Reports, Statistics, ICES

TANF - REGULAR	November 2007	October 2007	November 2006	Annual Change
Number of families receiving TANF grants	39,916	40,636	39,974	-0.15%
Total number of grant recipients	106,696	108,880	107,021	-0.30%
Number of adult grant recipients	32,494	33,234	32,373	0.37%
Number of child grant recipients	74,202	75,646	74,648	-0.60%
Total payments	\$8,189,273	\$8,362,551	\$8,140,055	0.60%
Average payment per case	\$205.16	\$205.79	\$203.63	0.75%
Average payment per person	\$76.75	\$76.81	\$76.06	0.91%
Number of TANF cases with benefits reduced to zero	4,593	4,543	4,907	-6.40%
Number of TANF recipients with benefits reduced to zero	13,573	13,411	14,584	-6.93%
Number of adult recipients	4,517	4,472	4,834	-6.56%
Number of child recipients	9,056	8,939	9,750	-7.12%
<b>TANF - UNEMPLOYED PARENT</b>				
Number of families receiving TANF-UP grants	1,995	1,913	1,739	14.72%
Number of recipients receiving TANF-UP grants	8,557	8,217	7,610	12.44%
Number of adult grant recipients	3,967	3,825	3,475	14.16%
Number of child grant recipients	4,590	4,392	4,135	11.00%
Total payments	\$560,276	\$522,821	\$462,010	21.27%
Average payment per case	\$280.84	\$273.30	\$265.68	5.71%
Average payment per person	\$65.48	\$63.63	\$60.71	7.85%
Number of TANF-UP cases with benefits reduced to zero	310	290	371	-16.44%
Number of TANF-UP recipients with benefits reduced to zero	1,363	1,275	1,631	-16.43%
Number of adult recipients	621	580	739	-15.97%
Number of child recipients	742	695	892	-16.82%

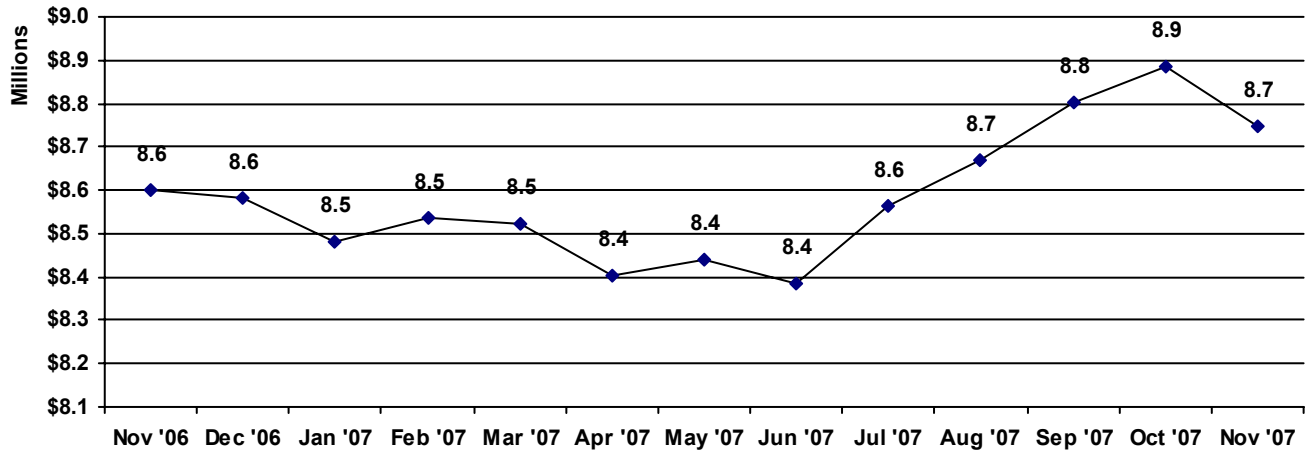
**All data presented in this report was collected at the end of the reporting month.**



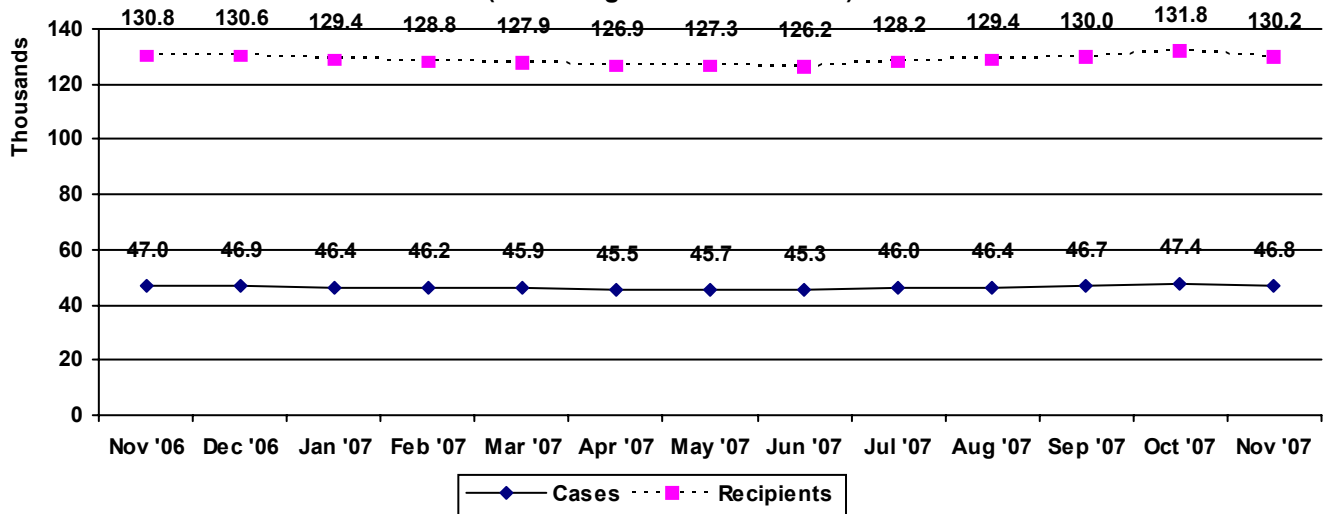
# Division of Family Resources Monthly Management Report Statewide November 2007

TEMPORARY ASSISTANCE FOR NEEDY FAMILIES (TANF) Source: FSSA Reports Statistics, ICES

### TANF Regular And TANF UP Cash Assistance



### TANF Cases and Recipients (TANF Regular and TANF UP)



All data presented in this report was collected at the end of the reporting month.



# Division of Family Resources

## Monthly Management Report

### Statewide

### November 2007

**FOOD STAMPS** Source: FSSA Reports Statistics, ICES

	November 2007	October 2007	November 2006	Annual % Change
Total stamps issued	\$61,641,372	\$62,394,398	\$55,377,981	11.31%
Number of households receiving stamps	260,330	261,526	251,533	3.50%
Number of recipients	605,377	607,782	581,657	4.08%
Average stamps per household	\$236.78	\$238.58	\$220.16	7.55%
Average stamps per recipient	\$101.82	\$102.66	\$95.21	6.95%

**FOOD STAMPS ERROR RATES** Source: FSSA Reports Statistics, ICES

	August 2007	July 2007	June 2007	Cumulative FFY 2006
FFY Cumulative Positive Error Rate	6.99%	6.83%	6.80%	6.49%
Monthly Positive Error Rate	8.65%	7.19%	7.47%	NA
FFY Cumulative Negative Error Rate	5.92%	5.66%	5.50%	5.75%
Monthly Negative Error Rate	8.33%	6.94%	10.67%	NA

Error Rate data is reported by the state before the federal agency has accepted and finalized the results. This rate is subject to revision. Monthly numbers are taken from the end of the month totals. Error status of cases may be changed by either State or Federal Review process, which would cause a change that might not be reflected in the previous monthly numbers.

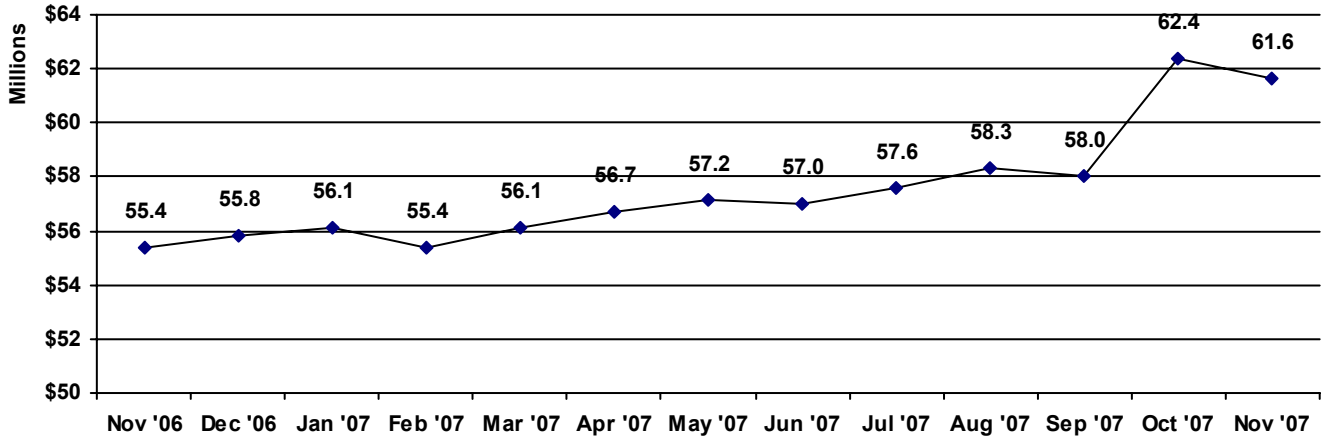
**All data presented in this report was collected at the end of the reporting month.**



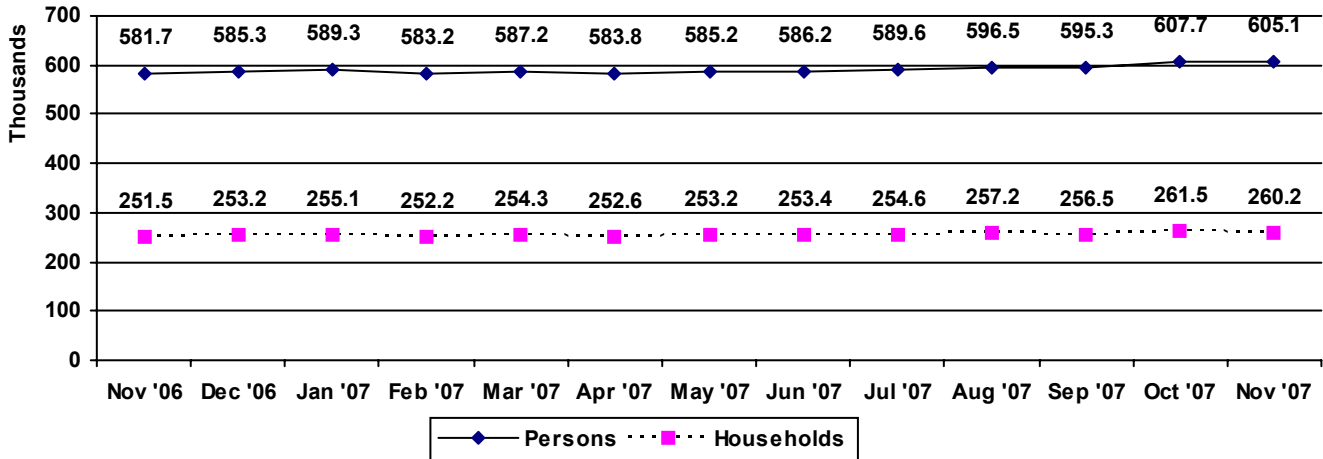
# Division of Family Resources Monthly Management Report Statewide November 2007

**FOOD STAMPS** Source: FSSA Reports Statistics, ICES

### Food Stamps Issued



### Food Stamps Households and Recipients



All data presented in this report was collected at the end of the reporting month.



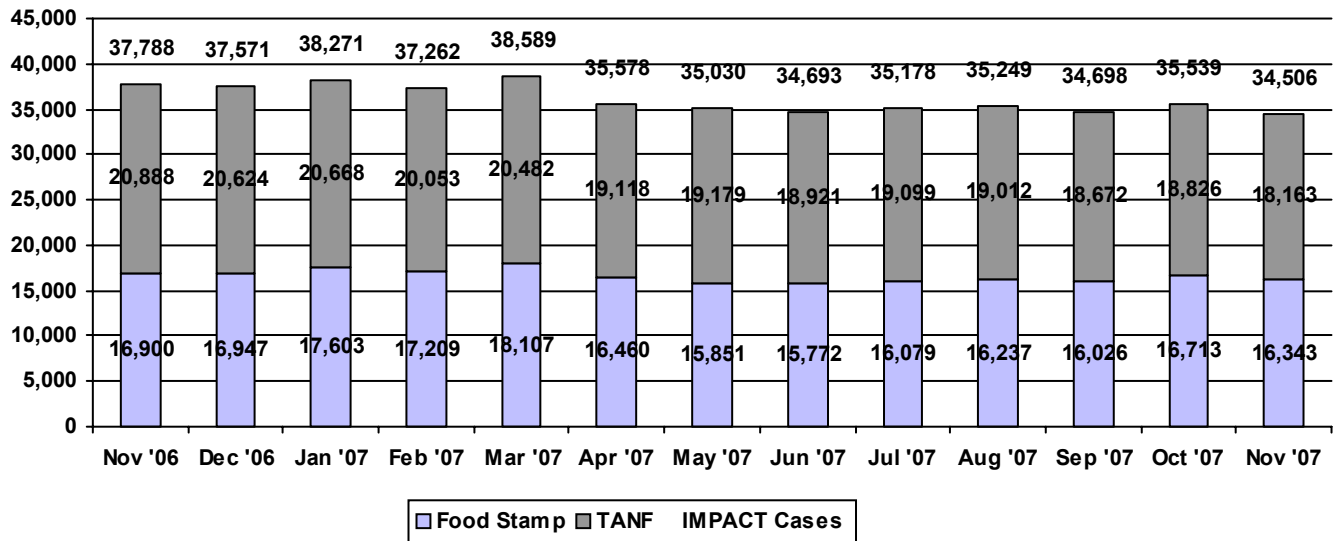
# Division of Family Resources Monthly Management Report Statewide November 2007

## IMPACT

Source: FSSA Reports Statistics; FSSA Data Warehouse Project (Employed data)

	November 2007	October 2007	November 2006	Annual % Change
Number of IMPACT cases (See IMPACT note)	34,506	35,539	37,788	-8.69%
Number of TANF IMPACT Cases	18,163	18,826	20,888	-13.05%
Number of Food Stamp Cases	16,343	16,713	16,900	-3.30%
Total number of adults employed	3,306	4,066	3,362	-1.67%
Number of TANF IMPACT adults employed	1,446	1,783	1,582	-8.60%
Number of Food Stamp adults employed	1,860	2,283	1,780	4.49%
Total number of adults ineligible due to employment	1,220	966	1,148	6.27%
Number of TANF adults	277	215	294	-5.78%
Number of Food Stamp adults	943	751	854	10.42%

### IMPACT Caseloads



Prior to October 2003, IMPACT caseloads did not include Employed or Sanction clients. Beginning October 2003, ICES programming changes allowed the capturing of this data. April 2007 there was a change in the data collection procedure causing the employed numbers to be low for that month.

**All data presented in this report was collected at the end of the reporting month.**

Prepared by:  
Reports and Statistics

Published:  
January 2008



**Division of Family Resources**  
**Monthly Management Report**  
**Statewide**  
**November 2007**

**CHILD CARE**

Source: DFR Child Development, CCDF-Prodnew

	November 2007	October 2007	November 2006	Annual % Change
Total Subsidized Child Care Payments	\$11,881,610	\$11,425,344	\$11,321,063	4.95%
Number of CCDF Children	35,665	35,086	34,345	3.84%
Number of Licensed Child Care Homes	3,025	3,017	2,952	2.47%
Licensed Capacity of Child Care Homes	37,223	37,165	36,149	2.97%
Number of Licensed Child Care Centers	603	604	606	-0.50%
Licensed Capacity of Child Care Centers	61,471	61,612	61,020	0.74%
Number of Registered Ministries (Capacity not regulated)	663	667	636	4.25%

**All data presented in this report was collected at the end of the reporting month.**



Division of Family Resources  
Monthly Management Report  
Statewide

November 2007

State of Indiana  
Family and Social Services Administration

Monthly Management Report  
Definitions of Elements

**TANF**

*The Temporary Assistance for Needy Families (TANF) Program provides cash payments to eligible families with children.*

**TANF Regular**

**Number of Families**

Total number of households or family units participating in TANF- Regular and TANF-I (Incapacitated Parent). It does not include TANF - UP (Unemployed Parent).

**Recipient**

A person receiving TANF benefits. There may be more than one recipient in a TANF case.

**"Adult"** recipient is a person 21 years or older or a person 18 or over with at least one child.

**"Child"** recipient is an unmarried person under 18 deprived of parental support and living with a specified relative.

**Payments**

Total cash assistance dollars paid to TANF recipients during the month.

**Average payment per Case**

Total TANF payments divided by the number of TANF cases receiving a grant. A "case" is a household or family unit participating in TANF- Regular and TANF-I (Incapacitated Parent). It does not include TANF - UP (Unemployed Parent).

**Average payment per Recipient**

Total TANF payments divided by the number of TANF recipients receiving a grant.

**Cases with benefits reduced to zero**

TANF families whose cash assistance has been reduced to zero due to income or penalty.

**TANF UP (Unemployed Parent Program)**

**Number of Families**

Total number of households or family units participating in TANF UP.

**Recipient**

A person receiving TANF benefits. There may be more than one recipient in a TANF case.

**"Adult"** recipient is a person 21 years or older or a person 18 or over with at least one child.

**"Child"** recipient is an unmarried person under 18 deprived of parental support and living with a specified relative.

**Payments**

Total cash assistance dollars paid to TANF recipients during the month.

**Average payment per Case**

Total TANF payments divided by the number of TANF cases receiving a grant. A "case" is a household or family unit participating in TANF UP.

**Average payment per Recipient**

Total TANF payments divided by the number of TANF recipients receiving a grant.

**Cases with benefits reduced to zero**

TANF families whose cash assistance has been reduced to zero due to income or penalty.

All data presented in this report was collected at the end of the reporting month.





Division of Family Resources  
Monthly Management Report  
Statewide  
November 2007

State of Indiana  
Family and Social Services Administration

Monthly Management Report  
Definitions of Elements

**Food Stamps (FS)**

*Indiana's Food Stamp Program helps eligible low income families supplement their food purchasing dollars with food stamp coupons.*

**Total Stamps Issued**

Dollar value of total food stamps issued during the month.

**Total Households**

The number of households participating in the FS program.

**Total Persons**

The number of persons participating in the FS program.

**Average Stamps per Household**

The total value of food stamps divided by the number of households.

**Average Stamps per Person**

The total value of food stamps divided by the total number of recipients.

**Positive Error Rate**

Dollars paid in error divided by total dollars.

**Negative Error Rate**

Number of erroneously closed or denied cases divided by total number of cases in sample.

**Unregressed**

Error rate reported by the state before the federal agency has accepted and finalized the results. This rate is subject to revision.

**Employment and Training**

*IMPACT assists TANF/Food Stamp families to become self-sufficient by helping to provide education, training, and job opportunities and overcoming personal barriers to employment.*

**Total IMPACT Cases**

The total number of active cases with IMPACT activities during the month.

**IMPACT-TANF**

The number of active TANF cases with IMPACT activities during the month.

**IMPACT-Food Stamp**

The number of active Food Stamp cases with IMPACT activities during the month.

**Total Adults Employed**

The total number of IMPACT adults employed during the month.

**TANF Adults Employed**

The total number of TANF-IMPACT participants that were reported employed during the month.

**Food Stamp Adults Employed**

The total number of FS-IMPACT participants that were reported employed during the month.

**Total Adults ineligible due to employment**

The total number of IMPACT adults cases closed during the month because of income from employment.

All data presented in this report was collected at the end of the reporting month.



Division of Family Resources  
Monthly Management Report  
Statewide  
November 2007

State of Indiana  
Family and Social Services Administration

Monthly Management Report  
Definitions of Elements

**Child Care**

*Indiana's child care program provides child caring services reimbursement to eligible families participating in IMPACT, transitioning out of the TANF program, or are low income families at risk of becoming eligible for TANF.*

**Total Subsidized Child Care Payments**

The total value of Child Care Development Fund (CCDF) Child Care Voucher Payments and CCDF Child Care Contract Payments.

**Licensed Capacity of Child Care Homes**

The number and licensed capacity of licensed day care homes.

**Licensed Capacity of Child Care Centers**

The number and licensed capacity of licensed day care centers.

**Registered Ministries**

The number of registered ministries with child caring facilities. The capacity of registered ministries is not regulated.

All data presented in this report was collected at the end of the reporting month.



**Division of Family Resources  
Monthly Management Report  
Statewide  
November 2007**

State of Indiana  
Family and Social Services Administration

**Monthly Management Report  
Definitions of Elements**

**Data Source Systems**

**CCDF – Prodnew**

State and contractor developed database collecting child care services data.

**FSSA Data Warehouse**

A data coordinating entity established to

prepare federal TANF reports.

**ICES**

Indiana Client Eligibility System is a federally certified online, integrated, eligibility system that supports the administration of TANF, Food Stamps, IMPACT, and Medicaid Eligibility.

**All data presented in this report was collected at the end of the reporting month.**