



DIVISION OF FAMILY RESOURCES

Whitley County Monthly Management Report December 2023

State of Indiana

Eric Holcomb
Governor

Family and Social Services Administration

Dan Rusyniak, MD
Secretary

Division of Family Resources

Adrienne Shields
Director

For questions regarding data on this report contact:
office.Communications@fssa.IN.gov



State of Indiana

Published January 2024



DIVISION OF FAMILY RESOURCES

Monthly Management Report

Reporting Month: December 2023

Location: Whitley County

TEMPORARY ASSISTANCE FOR NEEDY FAMILIES (TANF)

Child-Only and One-Parent Families	December 2023	November 2023	December 2022	Annual Change
Number of families receiving TANF Grants	6	7	8	-25.00%
Total number of grant recipients	15	17	16	-6.25%
Number of adult grant recipients	2	3	3	-33.33%
Number of child grant recipients	13	14	13	0.00%
Total payments	\$1,585	\$1,743	\$1,676	-5.43%
Average payment per case	\$264.17	\$249.00	\$209.50	26.09%
Average payment per recipient	\$105.67	\$102.53	\$104.75	0.88%
Number of cases with benefits reduced to zero	1	0	0	0%
Number of recipients with benefits reduced to zero	1	0	0	0%
Number of adult recipients with benefit reduced to zero	1	0	0	0%
Number of child recipients with benefit reduced to zero	0	0	0	0%

Two-Parent Families	December 2023	November 2023	December 2022	Annual Change
Number of families receiving TANF Grants	0	0	0	0%
Total number of grant recipients	0	0	0	0%
Number of adult grant recipients	0	0	0	0%
Number of child grant recipients	0	0	0	0%
Total payments	\$0	\$0	\$0	0%
Average payment per case	\$0.00	\$0.00	\$0.00	0.00%
Average payment per recipient	\$0.00	\$0.00	\$0.00	0.00%
Number of cases with benefits reduced to zero	0	0	0	0%
Number of recipients with benefits reduced to zero	0	0	0	0%
Number of adult recipients with benefit reduced to zero	0	0	0	0%
Number of child recipients with benefit reduced to zero	0	0	0	0%

Note:

For August 2021, a one time payment of \$400 per recipient was included in the Total payments and Average payments. TANF section rules changed to reflect Federal reporting logic effective September 2021. For August 2022, a one-time payment of \$269 per recipient was included in the Total payments and Average payments.

Source:



DIVISION OF FAMILY RESOURCES

Monthly Management Report

Reporting Month: December 2023

Location: Whitley County

TANF - APPLICATIONS

	December 2023	November 2023	December 2022	Annual Change
Number of Applications	16	17	14	14.29%

TANF - RECIPIENTS BY ZIP CODE

ZIP Code	Households	Recipients
46723	1	2
46725	4	11
46787	1	2
Total	6	15



DIVISION OF FAMILY RESOURCES

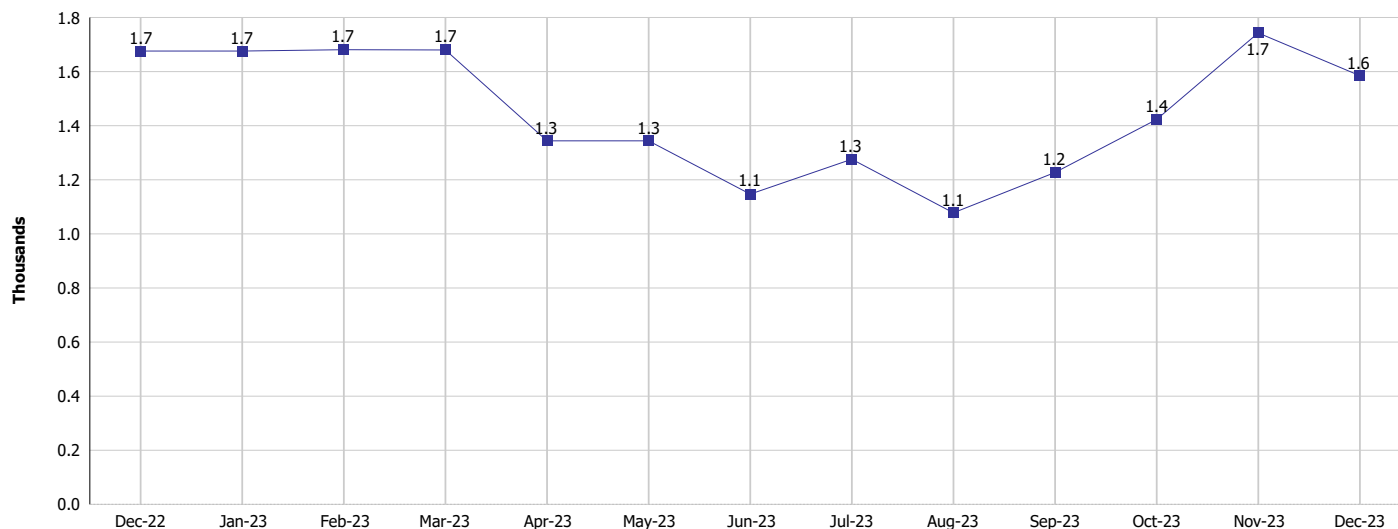
Monthly Management Report

Reporting Month: December 2023

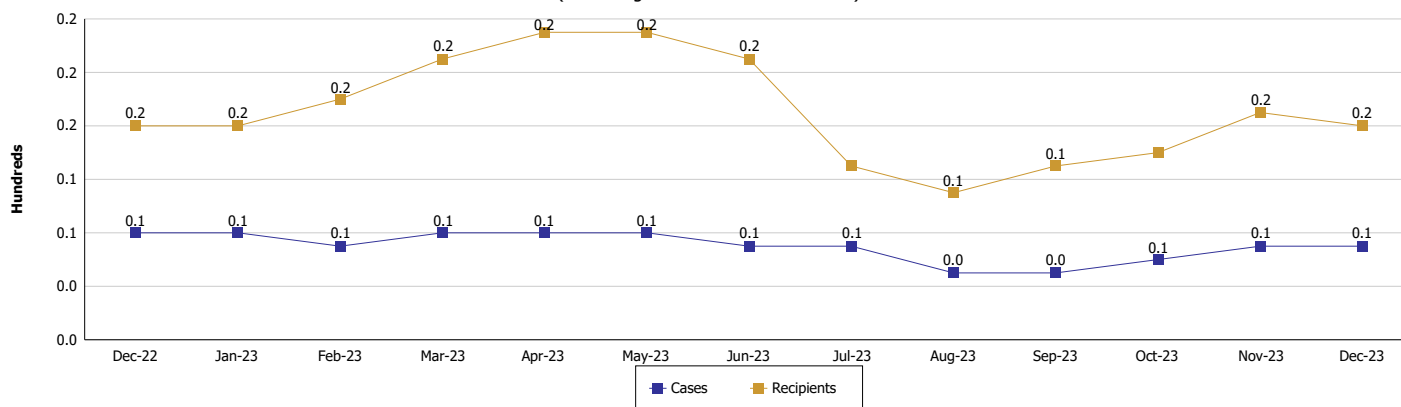
Location: Whitley County

TEMPORARY ASSISTANCE FOR NEEDY FAMILIES (TANF)

TANF Regular And TANF Two-Parent Cash Assistance



TANF Cases and Recipients (TANF Regular and TANF Two-Parent)



Note:

For August 2021, a one time payment of \$400 per recipient was included in the Total payments and Average payments. TANF section rules changed to reflect Federal reporting logic effective September 2021. For August 2022, a one-time payment of \$269 per recipient was included in the Total payments and Average payments.



DIVISION OF FAMILY RESOURCES

Monthly Management Report

Reporting Month: December 2023

Location: Whitley County

SUPPLEMENTAL NUTRITION ASSISTANCE PROGRAM (SNAP)

	December 2023	November 2023	December 2022	Annual Change
Total issuance	\$236,487	\$236,871	\$207,437	14%
Number of households receiving SNAP benefits	654	658	601	8.82%
Number of recipients	1,305	1,313	1,180	10.59%
Average issuance per household	\$361.6	\$359.99	\$345.15	4.77%
Average issuance per recipient	\$181.22	\$180.4	\$175.79	3.09%
Number of Applications	99	100	77	28.57%



DIVISION OF FAMILY RESOURCES

Monthly Management Report

Reporting Month: December 2023

Location: Whitley County

SNAP - RECIPIENTS BY ZIP CODE

ZIP Code	Households	Recipients
46562	4	14
46723	74	143
46725	470	951
46750	1	1
46764	17	41
46783	3	7
46787	78	137
46803	1	2
46818	5	8
46974	1	1
Totals	654	1,305



DIVISION OF FAMILY RESOURCES

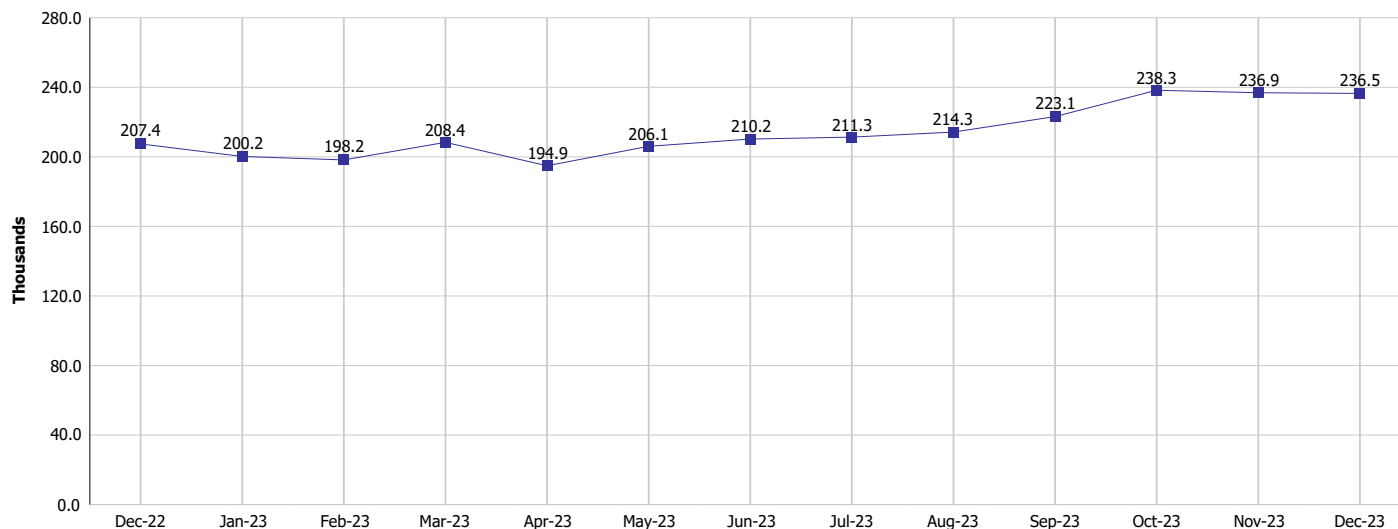
Monthly Management Report

Reporting Month: December 2023

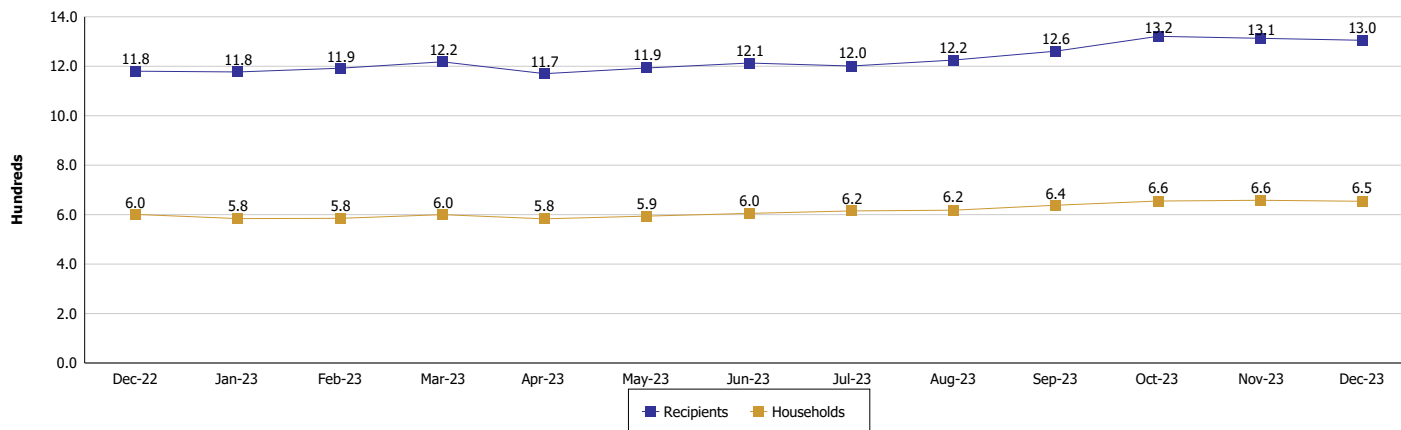
Location: Whitley County

SUPPLEMENTAL NUTRITION ASSISTANCE PROGRAM (SNAP)

SNAP Issuance



SNAP Households and Recipients



Note:

Run Date: Jan 12, 2024



DIVISION OF FAMILY RESOURCES

Monthly Management Report

Reporting Month: December 2023

Location: Whitley County

HIP 2.0 and SNAP

	December 2023	November 2023	December 2022	Annual Change
Total HIP 2.0 Members	2,254	2,287	2,453	-8.11%
HIP Members also SNAP Recipients	385	406	356	8.15%
Percentage HIP Members SNAP Recipients	17.1%	17.8%	14.5%	2.57
HIP Members SNAP ABAWDs	21	14	15	40.00%
Percentage HIP Members SNAP ABAWDs	0.9%	0.6%	0.6%	0.3

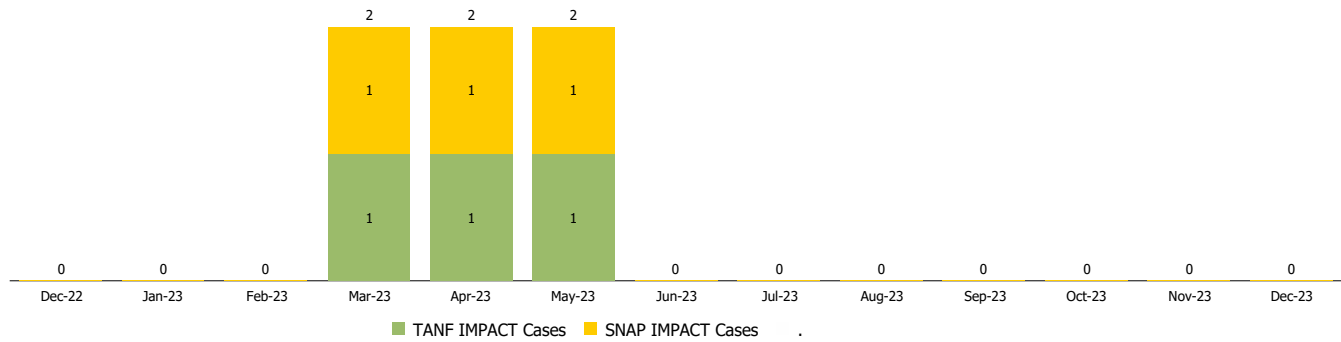
Monthly Management Report

Reporting Month: December 2023	Location: Whitley County
--------------------------------	--------------------------

INDIANA MANPOWER PLACEMENT AND COMPREHENSIVE TRAINING (IMPACT)

	December 2023	November 2023	December 2022	Annual Change
Number of IMPACT cases	0	0	0	
Number of TANF IMPACT adults	0	0	0	
Number of SNAP IMPACT Cases	0	0	0	
Total number of adults employed	0	5	8	-100.00%
Number of TANF IMPACT adults newly employed (within past 30 days)	0	0	0	
Number of SNAP IMPACT adults employed	0	5	8	-100.00%
Total number of adults ineligible due to employment	7	6	3	133.33%
Number of TANF adults ineligible due to employment	0	1	0	
Number of SNAP adults ineligible due to employment	7	5	3	133.33%

IMPACT Caseloads
(SNAP, TANF, Total Caseload)



Note: Effective January 2022, these numbers have been adjusted to reflect only those actually participating in IMPACT.