



## DIVISION OF FAMILY RESOURCES

# White County Monthly Management Report July 2021

### State of Indiana

Eric Holcomb  
Governor

### Family and Social Services Administration

Jennifer Sullivan, M.D.  
Secretary

### Division of Family Resources

Adrienne Shields  
Director

For questions regarding data on this report contact:  
[office.Communications@fssa.IN.gov](mailto:office.Communications@fssa.IN.gov)



## State of Indiana

Published August 2021



## DIVISION OF FAMILY RESOURCES

### Monthly Management Report

Reporting Month: July 2021

Location: White County

#### TEMPORARY ASSISTANCE FOR NEEDY FAMILIES (TANF)

Child-Only and One-Parent Families	Jul 31, 2021	June 2021	July 2020	Annual Change
Number of families receiving TANF Grants	14	12	14	0.00%
Total number of grant recipients	32	27	28	14.29%
Number of adult grant recipients	7	5	5	40.00%
Number of child grant recipients	25	22	23	8.70%
Total payments	\$3,153	\$2,636	\$2,903	8.61%
Average payment per case	\$225.21	\$219.67	\$207.36	8.61%
Average payment per recipient	\$98.53	\$97.63	\$103.68	-4.96%
Number of cases with benefits reduced to zero	0	0	1	-100.00%
Number of recipients with benefits reduced to zero	0	0	2	-100.00%
Number of adult recipients with benefit reduced to zero	0	0	1	-100.00%
Number of child recipients with benefit reduced to zero	0	0	1	-100.00%

Two-Parent Families	Jul 31, 2021	June 2021	July 2020	Annual Change
Number of families receiving TANF Grants	5	5	1	400.00%
Total number of grant recipients	20	19	5	300.00%
Number of adult grant recipients	3	3	0	0%
Number of child grant recipients	17	16	5	240.00%
Total payments	\$1,668	\$1,610	\$373	347.18%
Average payment per case	\$333.60	\$322.00	\$373.00	-10.56%
Average payment per recipient	\$83.40	\$84.74	\$74.60	11.80%
Number of cases with benefits reduced to zero	0	0	0	0%
Number of recipients with benefits reduced to zero	0	0	0	0%
Number of adult recipients with benefit reduced to zero	0	0	0	0%
Number of child recipients with benefit reduced to zero	0	0	0	0%

**Note:**

All data July 2014 and following will be broken out according to the new DFR region structure effective July 1 2014.

Source:



## DIVISION OF FAMILY RESOURCES

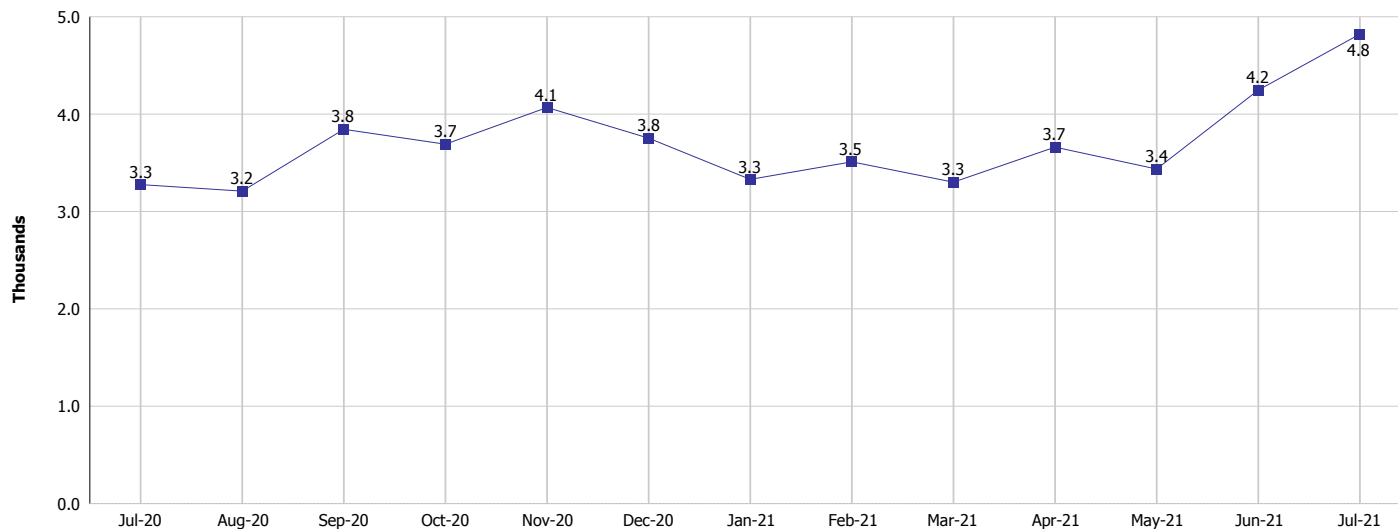
### Monthly Management Report

Reporting Month: July 2021

Location: White County

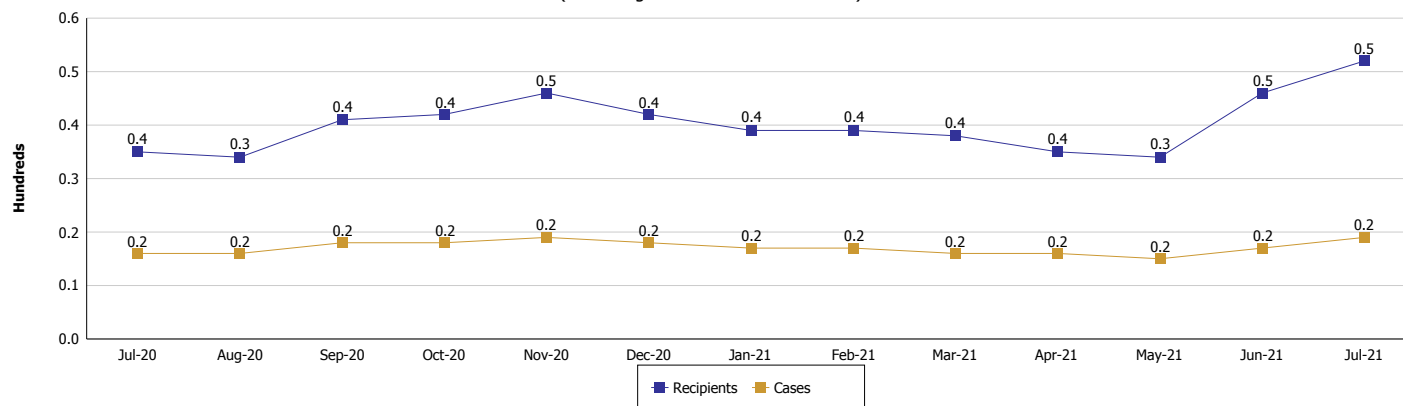
#### TEMPORARY ASSISTANCE FOR NEEDY FAMILIES (TANF)

#### TANF Regular And TANF Two-Parent Cash Assistance



#### TANF Cases and Recipients

(TANF Regular and TANF Two-Parent)



**Note:**

All data July 2014 and following will be broken out according to the new DFR region structure effective July 1 2014.



## DIVISION OF FAMILY RESOURCES

### Monthly Management Report

Reporting Month: July 2021

Location: White County

#### SUPPLEMENTAL NUTRITION ASSISTANCE PROGRAM (SNAP)

	July 2021	June 2021	July 2020	Annual Change
Total issuance	\$388,521	\$397,631	\$282,915	37.33%
Number of households receiving SNAP benefits	775	792	719	7.79%
Number of recipients	1,743	1,780	1,624	7.33%
Average issuance per household	\$501.32	\$502.06	\$393.48	27.41%
Average issuance per recipient	\$222.9	\$223.39	\$174.21	27.95%

**Note:**

All data July 2014 and following will be broken out according to the new DFR region structure effective July 1 2014.



# DIVISION OF FAMILY RESOURCES

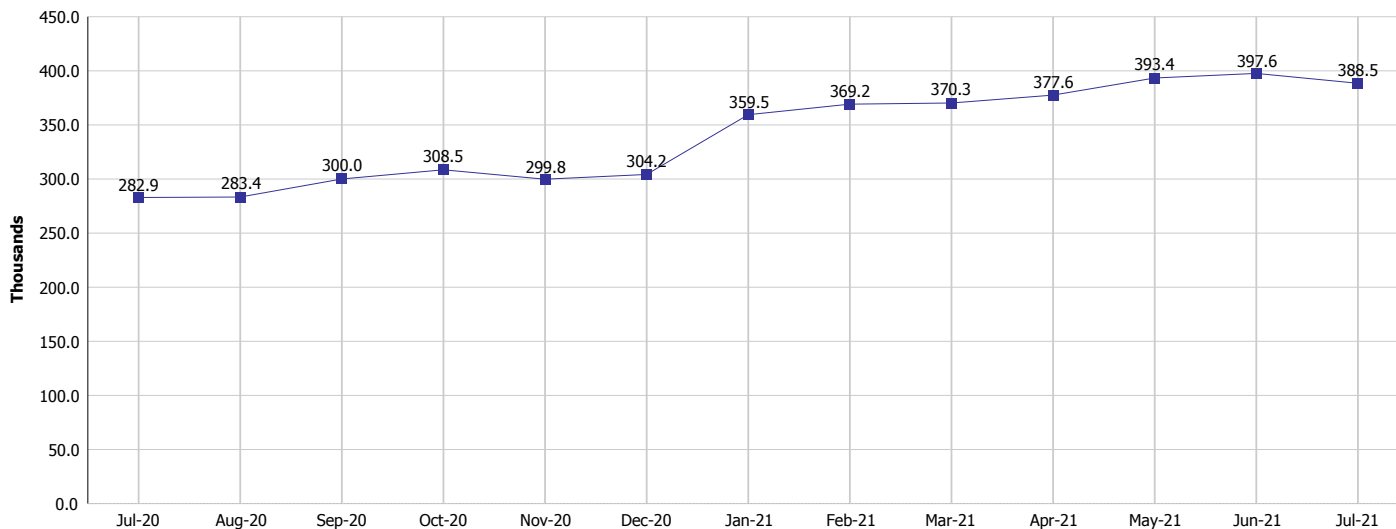
## Monthly Management Report

Reporting Month: July 2021

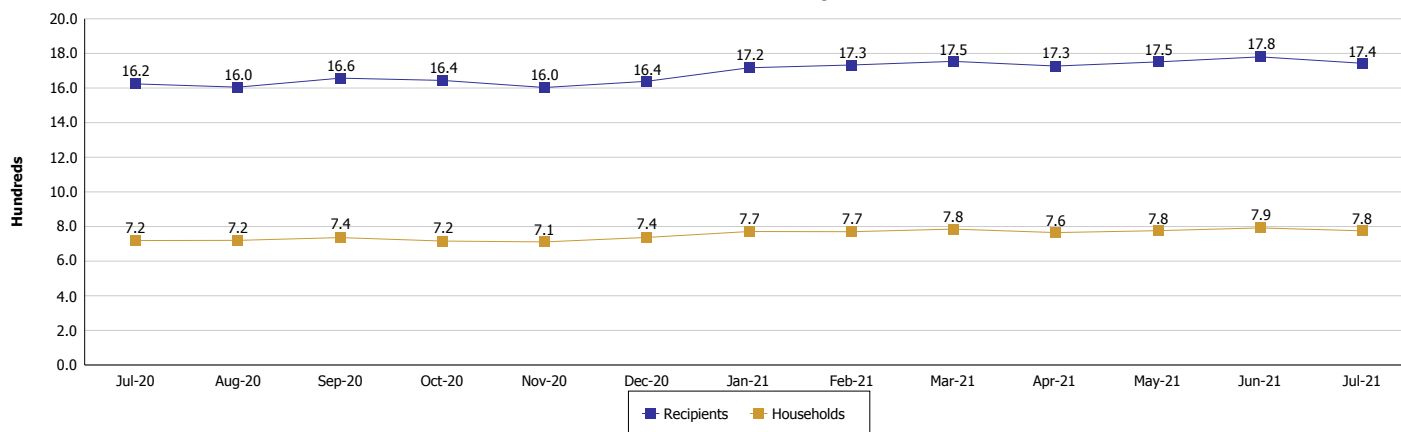
Location: White County

### SUPPLEMENTAL NUTRITION ASSISTANCE PROGRAM (SNAP)

#### SNAP Issuance



#### SNAP Households and Recipients



**Note:**

All data July 2014 and following will be broken out according to the new DFR region structure effective July 1 2021.



## DIVISION OF FAMILY RESOURCES

### Monthly Management Report

Reporting Month: July 2021

Location: White County

#### HIP 2.0 and SNAP

	July 2021	June 2021	July 2020	Annual Change
Total HIP 2.0 Members	2,176	2,159	1,645	32.28%
HIP Members also SNAP Recipients	484	496	398	21.61%
Percentage HIP Members SNAP Recipients	22.2%	23.0%	24.2%	-1.95
HIP Members SNAP ABAWDs	0	0	5	-100.00%
Percentage HIP Members SNAP ABAWDs	0	0	0.3%	-0.3

**Note:**

All data July 2014 and following will be broken out according to the new DFR region structure effective July 1 2014.



## DIVISION OF FAMILY RESOURCES

### Monthly Management Report

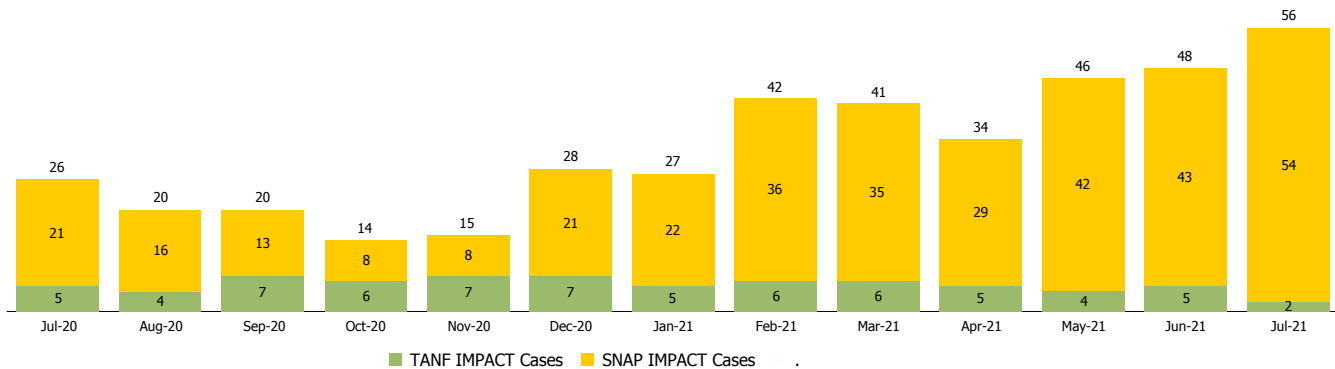
Reporting Month: July 2021

Location: White County

#### INDIANA MANPOWER PLACEMENT AND COMPREHENSIVE TRAINING (IMPACT)

	July 2021	June 2021	July 2020	Annual Change
Number of IMPACT cases	56	48	26	115.38%
Number of TANF IMPACT adults	2	5	5	-60.00%
Number of SNAP IMPACT Cases	54	43	21	157.14%
Total number of adults employed	9	5	3	200.00%
Number of TANF IMPACT adults newly employed (within past 30 days)	0	2	0	
Number of SNAP IMPACT adults employed	9	3	3	200.00%
Total number of adults ineligible due to employment	10	4	36	-72.22%
Number of TANF adults ineligible due to employment	0	1	0	
Number of SNAP adults ineligible due to employment	10	3	36	-72.22%

**IMPACT Caseloads**  
(SNAP, TANF, Total Caseload)



**Note:**

All data July 2014 and following will be broken out according to the new DFR region structure effective July 1 2014.