



## DIVISION OF FAMILY RESOURCES

# Wells County Monthly Management Report July 2021

### State of Indiana

Eric Holcomb  
Governor

### Family and Social Services Administration

Jennifer Sullivan, M.D.  
Secretary

### Division of Family Resources

Adrienne Shields  
Director

For questions regarding data on this report contact:  
[office.Communications@fssa.IN.gov](mailto:office.Communications@fssa.IN.gov)



## State of Indiana

Published August 2021



## DIVISION OF FAMILY RESOURCES

### Monthly Management Report

Reporting Month: July 2021

Location: Wells County

#### TEMPORARY ASSISTANCE FOR NEEDY FAMILIES (TANF)

Child-Only and One-Parent Families	Jul 31, 2021	June 2021	July 2020	Annual Change
Number of families receiving TANF Grants	12	14	12	0.00%
Total number of grant recipients	28	33	28	0.00%
Number of adult grant recipients	4	3	3	33.33%
Number of child grant recipients	24	30	25	-4.00%
Total payments	\$2,700	\$3,123	\$2,346	15.09%
Average payment per case	\$225.00	\$223.07	\$195.50	15.09%
Average payment per recipient	\$96.43	\$94.64	\$83.79	15.09%
Number of cases with benefits reduced to zero	0	0	0	0%
Number of recipients with benefits reduced to zero	0	0	0	0%
Number of adult recipients with benefit reduced to zero	0	0	0	0%
Number of child recipients with benefit reduced to zero	0	0	0	0%

Two-Parent Families	Jul 31, 2021	June 2021	July 2020	Annual Change
Number of families receiving TANF Grants	3	3	1	200.00%
Total number of grant recipients	9	8	5	80.00%
Number of adult grant recipients	3	4	2	50.00%
Number of child grant recipients	6	4	3	100.00%
Total payments	\$832	\$754	\$405	105.43%
Average payment per case	\$277.33	\$251.33	\$405.00	-31.52%
Average payment per recipient	\$92.44	\$94.25	\$81.00	14.13%
Number of cases with benefits reduced to zero	0	0	0	0%
Number of recipients with benefits reduced to zero	0	0	0	0%
Number of adult recipients with benefit reduced to zero	0	0	0	0%
Number of child recipients with benefit reduced to zero	0	0	0	0%

**Note:**

All data July 2014 and following will be broken out according to the new DFR region structure effective July 1 2014.

Source:



## DIVISION OF FAMILY RESOURCES

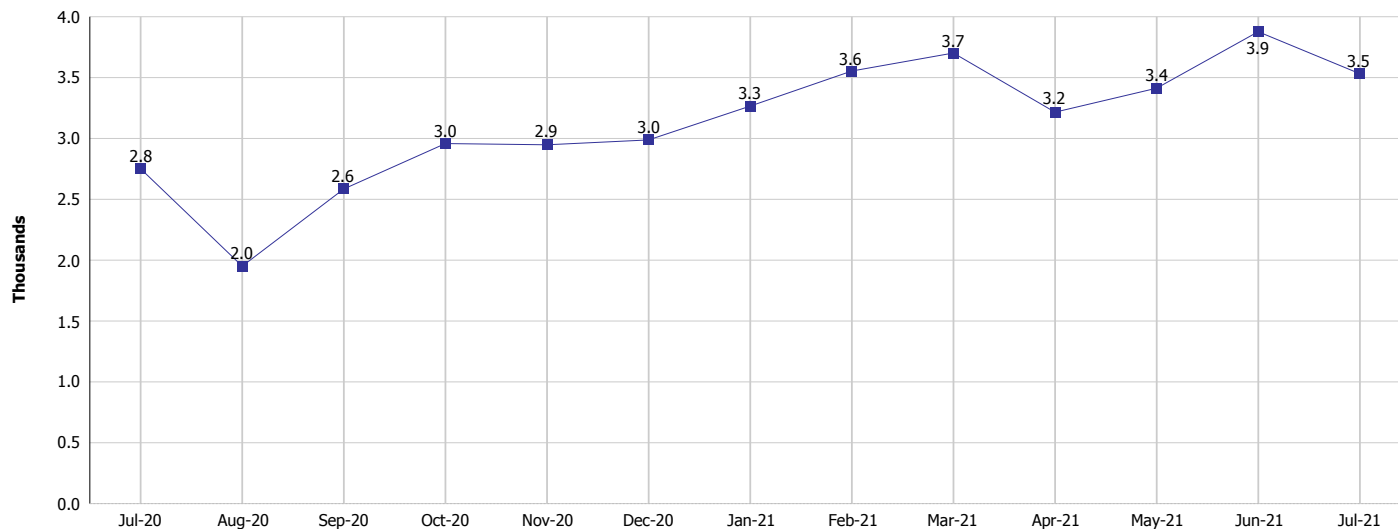
### Monthly Management Report

Reporting Month: July 2021

Location: Wells County

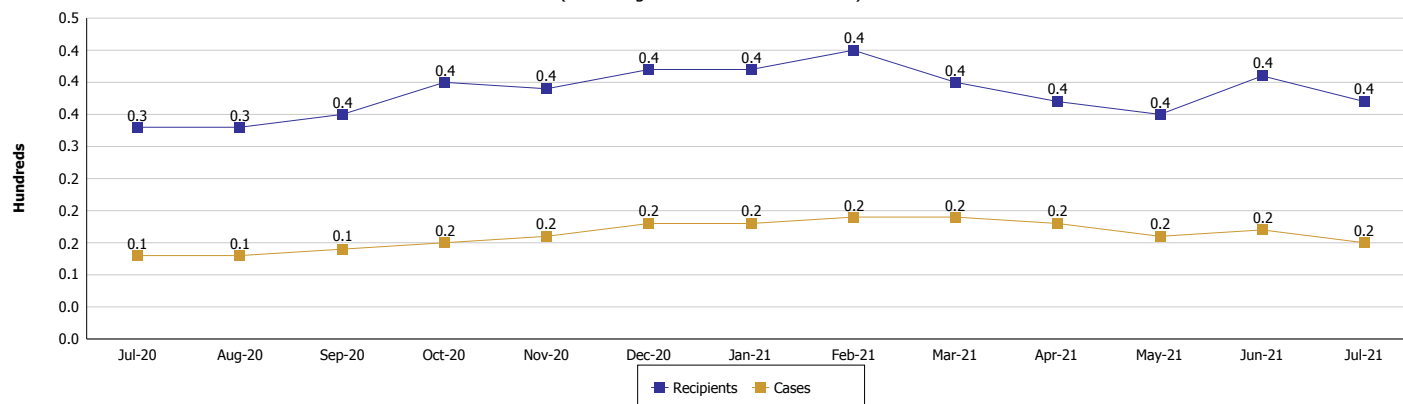
#### TEMPORARY ASSISTANCE FOR NEEDY FAMILIES (TANF)

#### TANF Regular And TANF Two-Parent Cash Assistance



#### TANF Cases and Recipients

(TANF Regular and TANF Two-Parent)



#### Note:

All data July 2014 and following will be broken out according to the new DFR region structure effective July 1 2014.



## DIVISION OF FAMILY RESOURCES

### Monthly Management Report

Reporting Month: July 2021

Location: Wells County

#### SUPPLEMENTAL NUTRITION ASSISTANCE PROGRAM (SNAP)

	July 2021	June 2021	July 2020	Annual Change
Total issuance	\$345,685	\$347,006	\$233,866	47.81%
Number of households receiving SNAP benefits	729	725	637	14.44%
Number of recipients	1,547	1,529	1,342	15.28%
Average issuance per household	\$474.19	\$478.63	\$367.14	29.16%
Average issuance per recipient	\$223.46	\$226.95	\$174.27	28.23%

**Note:**

All data July 2014 and following will be broken out according to the new DFR region structure effective July 1 2014.



# DIVISION OF FAMILY RESOURCES

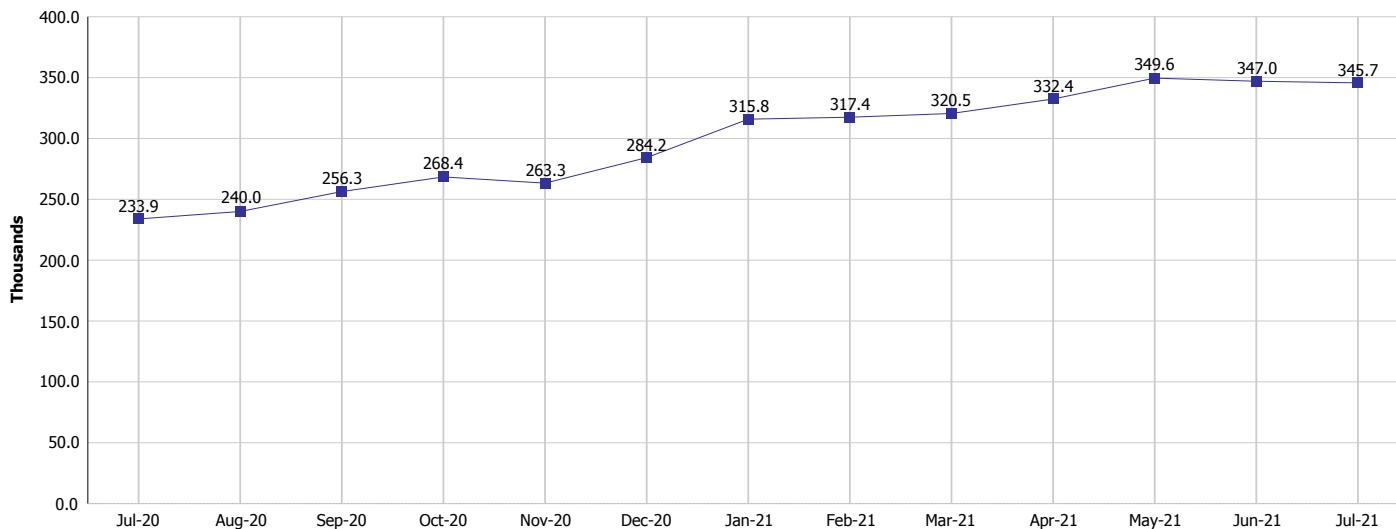
## Monthly Management Report

Reporting Month: July 2021

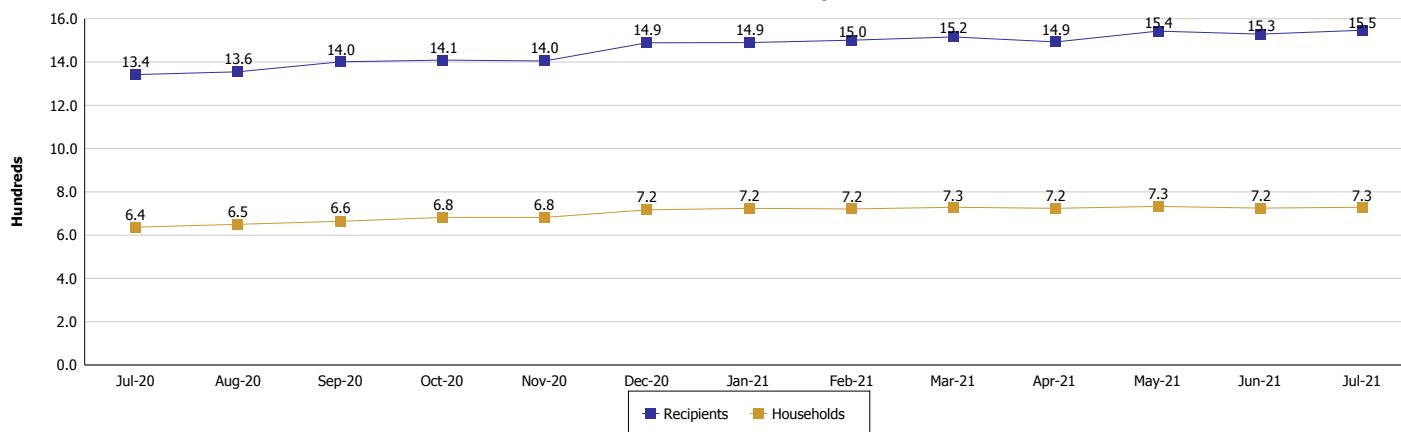
Location: Wells County

### SUPPLEMENTAL NUTRITION ASSISTANCE PROGRAM (SNAP)

#### SNAP Issuance



#### SNAP Households and Recipients



#### Note:

All data July 2014 and following will be broken out according to the new DFR region structure effective July 1 2021.



## DIVISION OF FAMILY RESOURCES

### Monthly Management Report

Reporting Month: July 2021

Location: Wells County

#### HIP 2.0 and SNAP

	July 2021	June 2021	July 2020	Annual Change
Total HIP 2.0 Members	2,061	2,045	1,503	37.13%
HIP Members also SNAP Recipients	478	486	389	22.88%
Percentage HIP Members SNAP Recipients	23.2%	23.8%	25.9%	-2.69
HIP Members SNAP ABAWDs	0	0	1	-100.00%
Percentage HIP Members SNAP ABAWDs	0	0	0.1%	-0.1

**Note:**

All data July 2014 and following will be broken out according to the new DFR region structure effective July 1 2014.



## DIVISION OF FAMILY RESOURCES

### Monthly Management Report

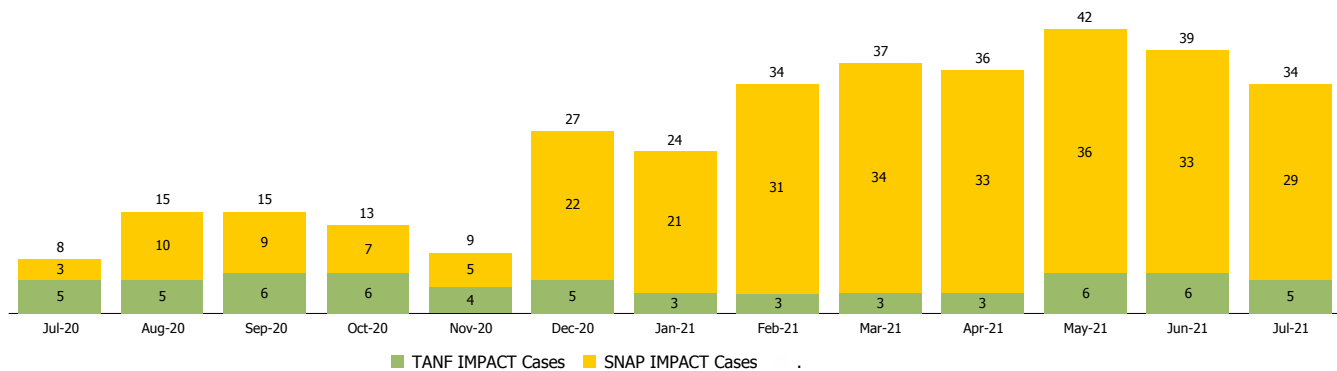
Reporting Month: July 2021

Location: Wells County

#### INDIANA MANPOWER PLACEMENT AND COMPREHENSIVE TRAINING (IMPACT)

	July 2021	June 2021	July 2020	Annual Change
Number of IMPACT cases	34	39	8	325.00%
Number of TANF IMPACT adults	5	6	5	0.00%
Number of SNAP IMPACT Cases	29	33	3	866.67%
Total number of adults employed	2	3	1	100.00%
Number of TANF IMPACT adults newly employed (within past 30 days)	0	0	0	
Number of SNAP IMPACT adults employed	2	3	1	100.00%
Total number of adults ineligible due to employment	3	6	31	-90.32%
Number of TANF adults ineligible due to employment	0	0	0	
Number of SNAP adults ineligible due to employment	3	6	31	-90.32%

**IMPACT Caseloads**  
(SNAP, TANF, Total Caseload)



**Note:**

All data July 2014 and following will be broken out according to the new DFR region structure effective July 1 2014.