



DIVISION OF FAMILY RESOURCES

Wayne County Monthly Management Report December 2023

State of Indiana

Eric Holcomb
Governor

Family and Social Services Administration

Dan Rusyniak, MD
Secretary

Division of Family Resources

Adrienne Shields
Director

For questions regarding data on this report contact:
office.Communications@fssa.IN.gov



State of Indiana

Published January 2024



DIVISION OF FAMILY RESOURCES

Monthly Management Report

Reporting Month: December 2023

Location: Wayne County

TEMPORARY ASSISTANCE FOR NEEDY FAMILIES (TANF)

Child-Only and One-Parent Families	December 2023	November 2023	December 2022	Annual Change
Number of families receiving TANF Grants	72	66	57	26.32%
Total number of grant recipients	120	108	98	22.45%
Number of adult grant recipients	10	8	3	233.33%
Number of child grant recipients	110	100	95	15.79%
Total payments	\$13,841	\$12,653	\$10,041	37.84%
Average payment per case	\$192.24	\$191.71	\$176.16	9.13%
Average payment per recipient	\$115.34	\$117.16	\$102.46	12.57%
Number of cases with benefits reduced to zero	2	2	1	100.00%
Number of recipients with benefits reduced to zero	5	5	1	400.00%
Number of adult recipients with benefit reduced to zero	1	1	0	0%
Number of child recipients with benefit reduced to zero	4	4	1	300.00%

Two-Parent Families	December 2023	November 2023	December 2022	Annual Change
Number of families receiving TANF Grants	1	1	6	-83.33%
Total number of grant recipients	3	3	11	-72.73%
Number of adult grant recipients	2	2	3	-33.33%
Number of child grant recipients	1	1	8	-87.50%
Total payments	\$320	\$320	\$1,118	-71.38%
Average payment per case	\$320.00	\$320.00	\$186.33	71.74%
Average payment per recipient	\$106.67	\$106.67	\$101.64	4.95%
Number of cases with benefits reduced to zero	0	0	0	0%
Number of recipients with benefits reduced to zero	0	0	0	0%
Number of adult recipients with benefit reduced to zero	0	0	0	0%
Number of child recipients with benefit reduced to zero	0	0	0	0%

Note:

For August 2021, a one time payment of \$400 per recipient was included in the Total payments and Average payments. TANF section rules changed to reflect Federal reporting logic effective September 2021. For August 2022, a one-time payment of \$269 per recipient was included in the Total payments and Average payments.

Source:



DIVISION OF FAMILY RESOURCES

Monthly Management Report

Reporting Month: December 2023	Location: Wayne County
--------------------------------	------------------------

TANF - APPLICATIONS

	December 2023	November 2023	December 2022	Annual Change
Number of Applications	49	56	67	-26.87%

TANF - RECIPIENTS BY ZIP CODE

ZIP Code	Households	Recipients
47327	1	2
47330	7	14
47339	1	2
47341	2	3
47357	1	1
47374	61	101
Total	73	123



DIVISION OF FAMILY RESOURCES

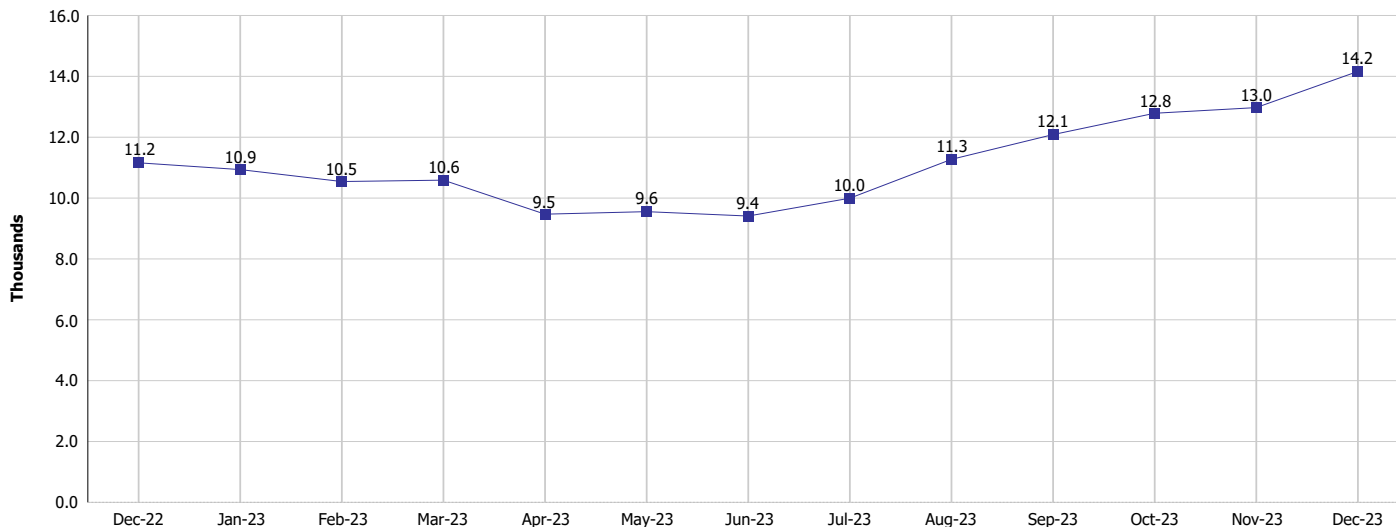
Monthly Management Report

Reporting Month: December 2023

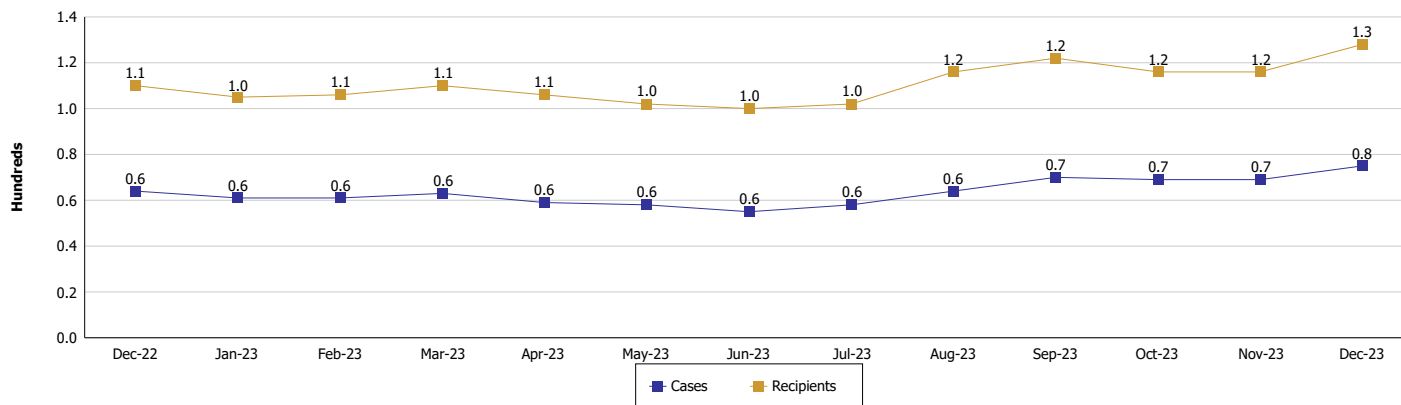
Location: Wayne County

TEMPORARY ASSISTANCE FOR NEEDY FAMILIES (TANF)

TANF Regular And TANF Two-Parent Cash Assistance



TANF Cases and Recipients (TANF Regular and TANF Two-Parent)



Note:

For August 2021, a one time payment of \$400 per recipient was included in the Total payments and Average payments. TANF section rules changed to reflect Federal reporting logic effective September 2021. For August 2022, a one-time payment of \$269 per recipient was included in the Total payments and Average payments.



DIVISION OF FAMILY RESOURCES

Monthly Management Report

Reporting Month: December 2023

Location: Wayne County

SUPPLEMENTAL NUTRITION ASSISTANCE PROGRAM (SNAP)

	December 2023	November 2023	December 2022	Annual Change
Total issuance	\$1,639,265	\$1,637,461	\$1,618,383	1.29%
Number of households receiving SNAP benefits	4,389	4,373	4,473	-1.88%
Number of recipients	8,575	8,540	8,678	-1.19%
Average issuance per household	\$373.49	\$374.45	\$361.81	3.23%
Average issuance per recipient	\$191.17	\$191.74	\$186.49	2.51%
Number of Applications	435	505	451	-3.55%



DIVISION OF FAMILY RESOURCES

Monthly Management Report

Reporting Month: December 2023

Location: Wayne County

SNAP - RECIPIENTS BY ZIP CODE

ZIP Code	Households	Recipients
46064	1	1
46143	1	1
46166	1	1
46580	1	1
46779	1	5
46902	1	1
47001	1	6
47302	1	1
47324	9	23
47325	1	3
47327	176	353
47330	207	445
47331	4	5
47335	50	102
47339	18	35
47341	51	134
47345	28	73
47346	84	165
47354	4	9
47355	1	1
47357	40	98
47362	1	5
47370	12	19
47374	3,644	6,987
47375	3	3
47392	12	21
47393	26	63
47394	2	2
None	8	12
Totals	4,389	8,575



DIVISION OF FAMILY RESOURCES

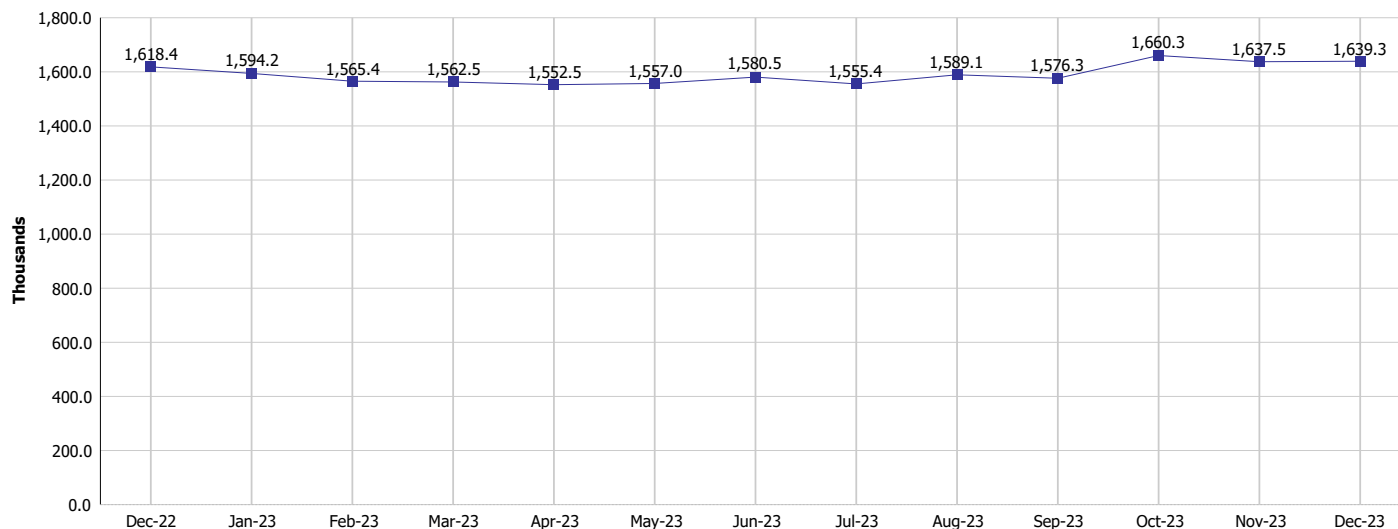
Monthly Management Report

Reporting Month: December 2023

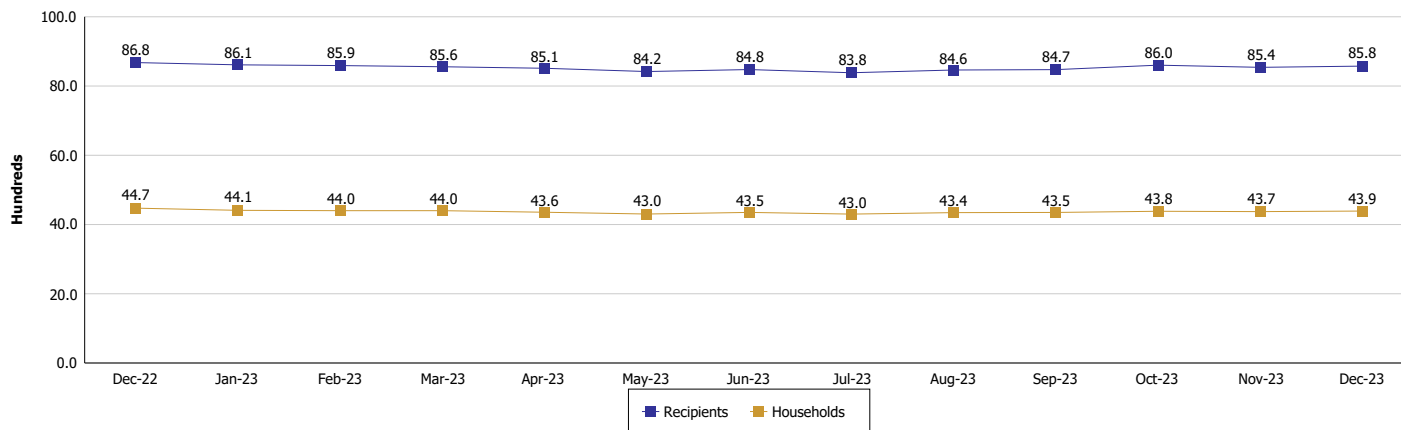
Location: Wayne County

SUPPLEMENTAL NUTRITION ASSISTANCE PROGRAM (SNAP)

SNAP Issuance



SNAP Households and Recipients



Note:

Run Date: Jan 12, 2024



DIVISION OF FAMILY RESOURCES

Monthly Management Report

Reporting Month: December 2023

Location: Wayne County

HIP 2.0 and SNAP

	December 2023	November 2023	December 2022	Annual Change
Total HIP 2.0 Members	9,607	9,674	10,215	-5.95%
HIP Members also SNAP Recipients	2,676	2,689	2,767	-3.29%
Percentage HIP Members SNAP Recipients	27.9%	27.8%	27.1%	0.77
HIP Members SNAP ABAWDs	137	135	151	-9.27%
Percentage HIP Members SNAP ABAWDs	1.4%	1.4%	1.5%	-0.1



DIVISION OF FAMILY RESOURCES

Monthly Management Report

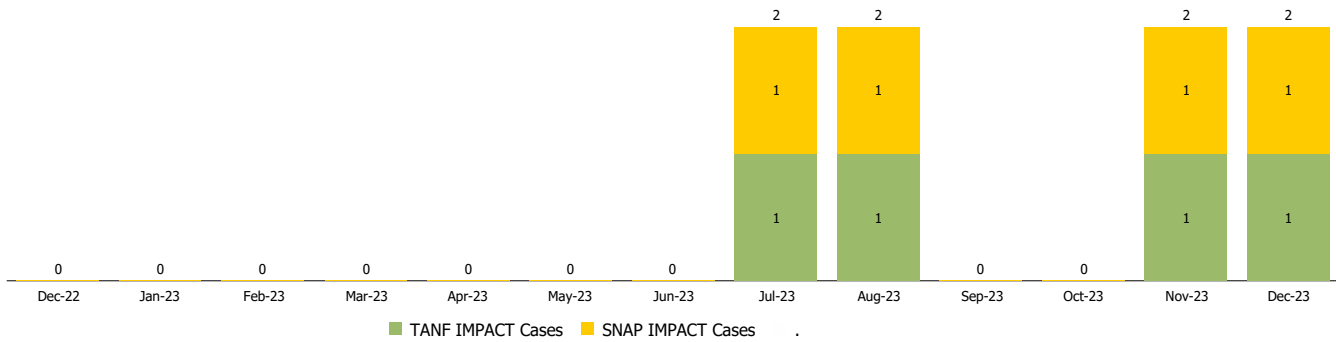
Reporting Month: December 2023

Location: Wayne County

INDIANA MANPOWER PLACEMENT AND COMPREHENSIVE TRAINING (IMPACT)

	December 2023	November 2023	December 2022	Annual Change
Number of IMPACT cases	2	2	0	
Number of TANF IMPACT adults	1	1	0	
Number of SNAP IMPACT Cases	1	1	0	
Total number of adults employed	9	13	31	-70.97%
Number of TANF IMPACT adults newly employed (within past 30 days)	0	0	0	
Number of SNAP IMPACT adults employed	9	13	31	-70.97%
Total number of adults ineligible due to employment	24	11	14	71.43%
Number of TANF adults ineligible due to employment	1	0	0	
Number of SNAP adults ineligible due to employment	23	11	14	64.29%

IMPACT Caseloads
(SNAP, TANF, Total Caseload)



Note:

Effective January 2022, these numbers have been adjusted to reflect only those actually participating in IMPACT.