



DIVISION OF FAMILY RESOURCES

Warrick County Monthly Management Report October 2025

State of Indiana

Mike Braun
Governor

Family and Social Services Administration

Mitch Roob
Secretary

Division of Family Resources

Sunshine Beam
Director

For questions regarding data on this report contact:
office.Communications@fssa.IN.gov



State of Indiana

Published November 2025



DIVISION OF FAMILY RESOURCES

Monthly Management Report

Reporting Month: October 2025

Location: Warrick County

TEMPORARY ASSISTANCE FOR NEEDY FAMILIES (TANF)

Child-Only and One-Parent Families	October 2025	September 2025	October 2024	Annual Change
Number of families receiving TANF Grants	15	16	19	-21.05%
Total number of grant recipients	26	28	35	-25.71%
Number of adult grant recipients	2	2	5	-60.00%
Number of child grant recipients	24	26	30	-20.00%
Total payments	\$4,864	\$5,062	\$6,148	-20.88%
Average payment per case	\$324.27	\$316.38	\$323.58	0.21%
Average payment per recipient	\$187.08	\$180.79	\$175.66	6.50%
Number of cases with benefits reduced to zero	0	0	0	0%
Number of recipients with benefits reduced to zero	0	0	0	0%
Number of adult recipients with benefit reduced to zero	0	0	0	0%
Number of child recipients with benefit reduced to zero	0	0	0	0%

Pregnancy TANF Families	October 2025	September 2025	October 2024	Annual Change
Number of families receiving TANF Grants	0	0	0	0%
Total number of grant recipients	0	0	0	0%
Total payments	\$0.00	\$0.00	\$0.00	0%
Average payment per case	\$0.00	\$0.00	\$0.00	0.00%
Average payment per recipient	\$0.00	\$0.00	\$0.00	0.00%
Number of cases with benefits reduced to zero	0	0	0	0%
Number of recipients with benefits reduced to zero	0	0	0	0%



DIVISION OF FAMILY RESOURCES

Monthly Management Report

Two-Parent Families	October 2025	September 2025	October 2024	Annual Change
Number of families receiving TANF Grants	0	0	0	0%
Total number of grant recipients	0	0	0	0%
Number of adult grant recipients	0	0	0	0%
Number of child grant recipients	0	0	0	0%
Total payments	\$0	\$0	\$0	0%
Average payment per case	\$0.00	\$0.00	\$0.00	0.00%
Average payment per recipient	\$0.00	\$0.00	\$0.00	0.00%
Number of cases with benefits reduced to zero	0	0	0	0%
Number of recipients with benefits reduced to zero	0	0	0	0%
Number of adult recipients with benefit reduced to zero	0	0	0	0%
Number of child recipients with benefit reduced to zero	0	0	0	0%

Note: The two-parent case count includes cases in which a parent living in the home is excluded from receiving TANF benefits but whose income is used in the TANF eligibility determination.



DIVISION OF FAMILY RESOURCES

Monthly Management Report

Reporting Month: October 2025

Location: Warrick County

TANF - APPLICATIONS

	October 2025	September 2025	October 2024	Annual Change
Number of Applications	30	30	42	-28.57%

TANF - RECIPIENTS BY ZIP CODE

ZIP Code	Households	Recipients
47523	1	1
47601	5	7
47610	4	4
47630	4	11
47637	1	3
Total	15	26



DIVISION OF FAMILY RESOURCES

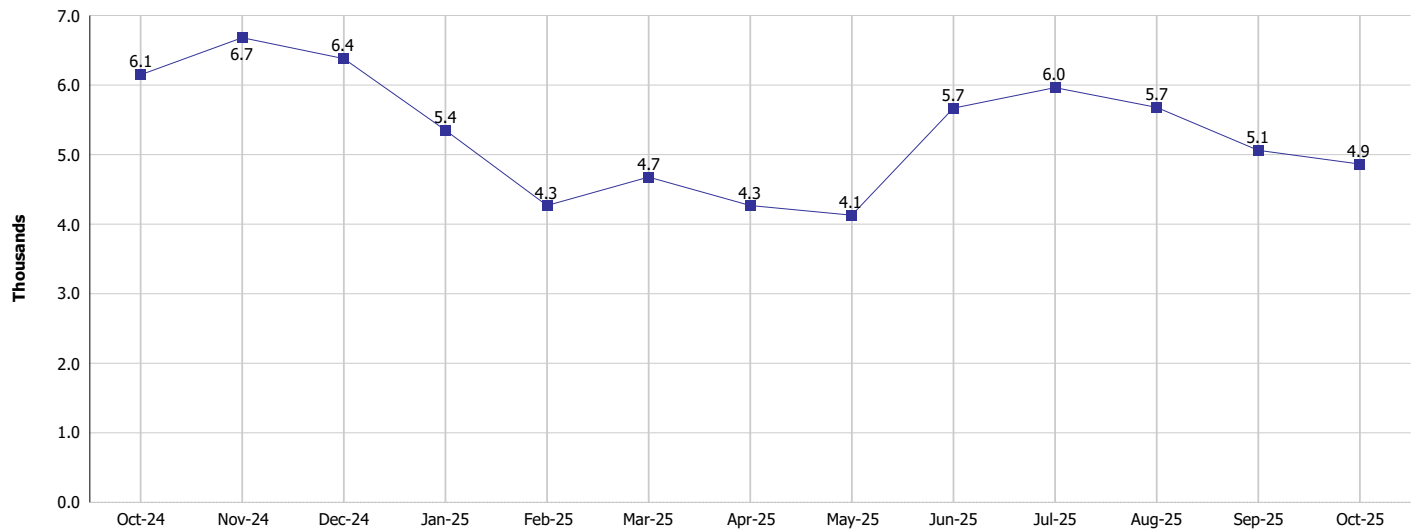
Monthly Management Report

Reporting Month: October 2025

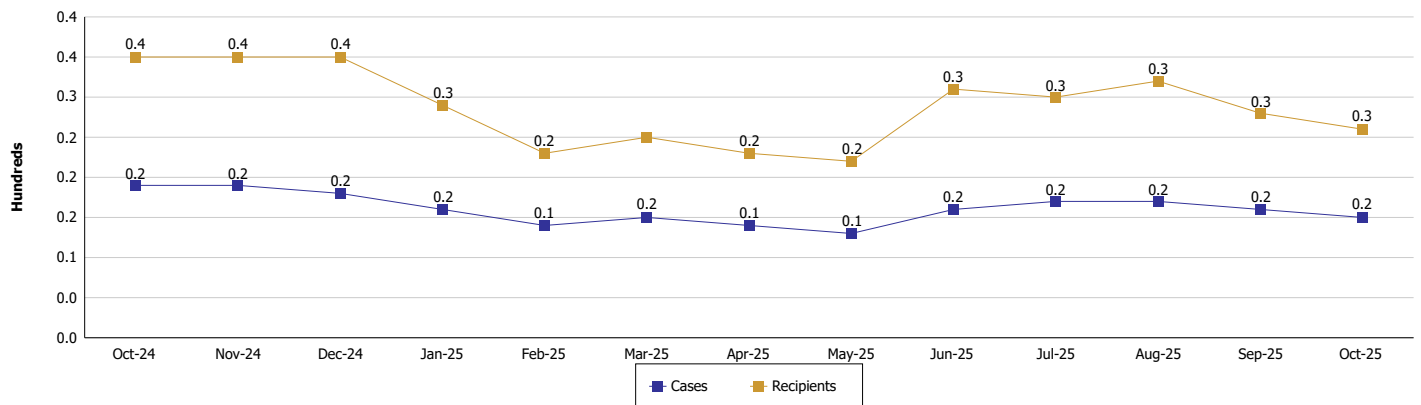
Location: Warrick County

TEMPORARY ASSISTANCE FOR NEEDY FAMILIES (TANF)

TANF Regular And TANF Two-Parent Cash Assistance



TANF Cases and Recipients
(TANF Regular and TANF Two-Parent)





DIVISION OF FAMILY RESOURCES

Monthly Management Report

Reporting Month: October 2025	Location: Warrick County
-------------------------------	--------------------------

SUPPLEMENTAL NUTRITION ASSISTANCE PROGRAM (SNAP)

	October 2025	September 2025	October 2024	Annual Change
Total issuance	\$394,097	\$404,079	\$437,560	-9.93%
Number of households receiving SNAP benefits	1,021	1,045	1,092	-6.5%
Number of recipients	2,141	2,228	2,346	-8.74%
Average issuance per household	\$385.99	\$386.68	\$400.7	-3.67%
Average issuance per recipient	\$184.07	\$181.36	\$186.51	-1.31%
Number of Applications	141	162	201	-29.85%



DIVISION OF FAMILY RESOURCES

Monthly Management Report

Reporting Month: October 2025

Location: Warrick County

SNAP - RECIPIENTS BY ZIP CODE

ZIP Code	Households	Recipients
47523	17	34
47537	2	5
47601	341	614
47610	187	418
47613	20	50
47619	19	57
47630	406	896
47637	22	44
47710	1	1
47711	2	8
47713	1	1
47714	1	1
47720	1	5
None	1	7
Totals	1,021	2,141



DIVISION OF FAMILY RESOURCES

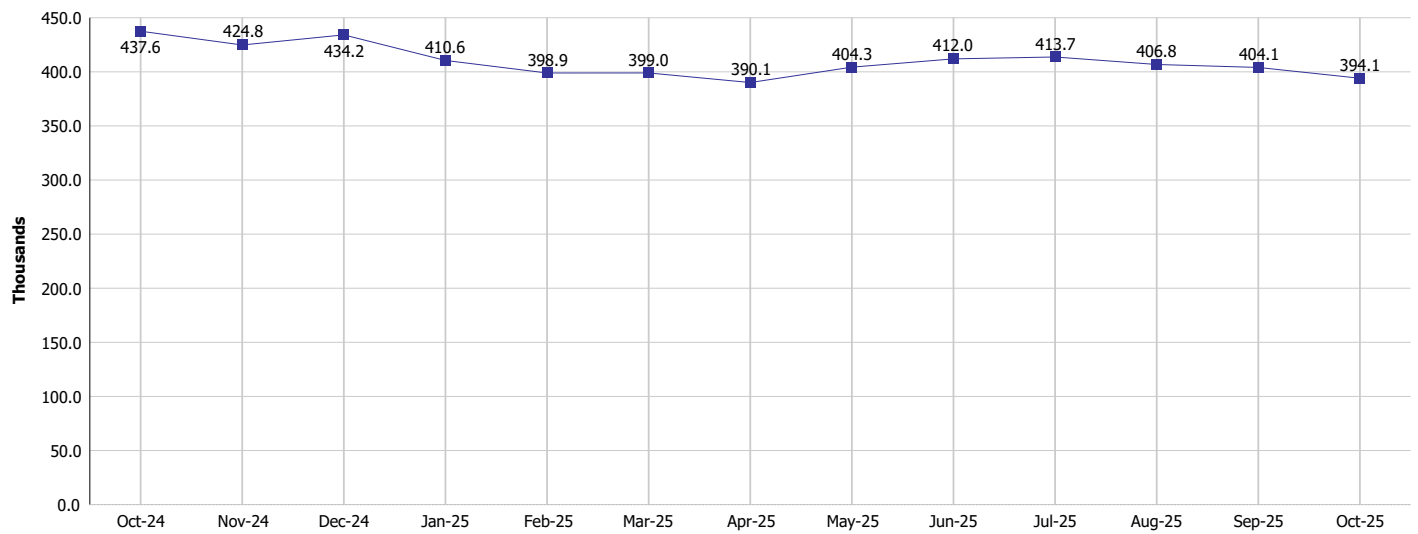
Monthly Management Report

Reporting Month: October 2025

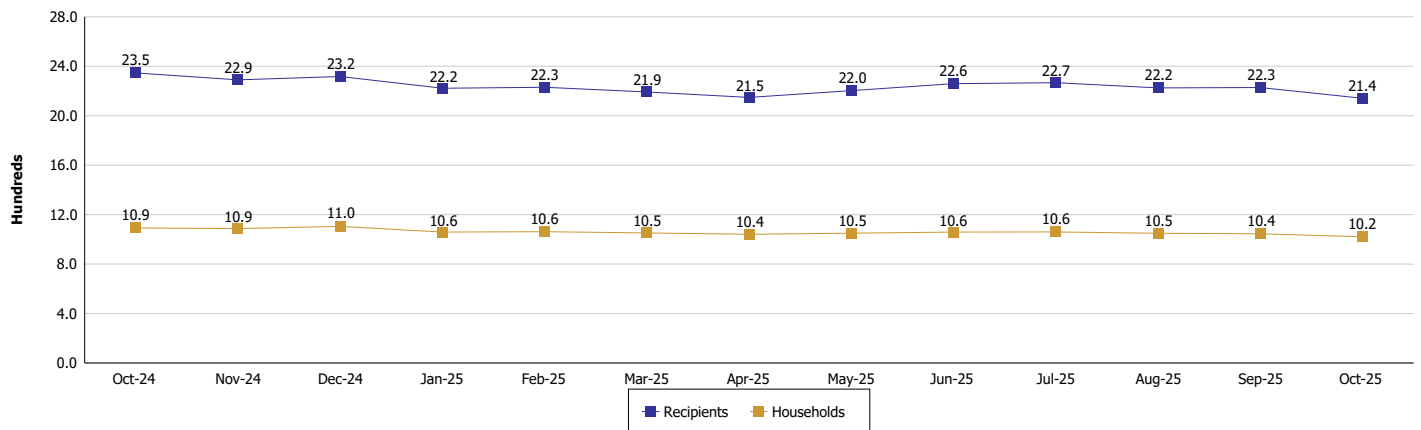
Location: Warrick County

SUPPLEMENTAL NUTRITION ASSISTANCE PROGRAM (SNAP)

SNAP Issuance



SNAP Households and Recipients





DIVISION OF FAMILY RESOURCES

Monthly Management Report

Reporting Month: October 2025

Location: Warrick County

HIP 2.0 and SNAP

	October 2025	September 2025	October 2024	Annual Change
Total HIP 2.0 Members	3,379	3,452	3,879	-12.89%
HIP Members also SNAP Recipients	639	660	728	-12.23%
Percentage HIP Members SNAP Recipients	18.9%	19.1%	18.8%	0.14
HIP Members SNAP ABAWDs	9	10	23	-60.87%
Percentage HIP Members SNAP ABAWDs	0.3%	0.3%	0.6%	-0.3



DIVISION OF FAMILY RESOURCES

Monthly Management Report

Reporting Month: October 2025

Location: Warrick County

INDIANA MANPOWER PLACEMENT AND COMPREHENSIVE TRAINING (IMPACT)

	October 2025	September 2025	October 2024	Annual Change
Number of IMPACT cases	0	0	4	-100.00%
Number of TANF IMPACT adults	0	0	2	-100.00%
Number of SNAP IMPACT Cases	0	0	2	-100.00%
Total number of adults employed	13	2	3	333.33%
Number of TANF IMPACT adults newly employed (within past 30 days)	0	0	0	
Number of SNAP IMPACT adults employed	13	2	3	333.33%
Total number of adults ineligible due to employment	5	7	12	-58.33%
Number of TANF adults ineligible due to employment	0	0	0	
Number of SNAP adults ineligible due to employment	5	7	12	-58.33%

IMPACT Caseloads
(SNAP, TANF, Total Caseload)

