



DIVISION OF FAMILY RESOURCES

Vanderburgh County Monthly Management Report December 2023

State of Indiana

Eric Holcomb
Governor

Family and Social Services Administration

Dan Rusyniak, MD
Secretary

Division of Family Resources

Adrienne Shields
Director

For questions regarding data on this report contact:
office.Communications@fssa.IN.gov



State of Indiana

Published January 2024



DIVISION OF FAMILY RESOURCES

Monthly Management Report

Reporting Month: December 2023

Location: Vanderburgh County

TEMPORARY ASSISTANCE FOR NEEDY FAMILIES (TANF)

Child-Only and One-Parent Families	December 2023	November 2023	December 2022	Annual Change
Number of families receiving TANF Grants	165	156	141	17.02%
Total number of grant recipients	364	319	293	24.23%
Number of adult grant recipients	50	41	17	194.12%
Number of child grant recipients	314	278	276	13.77%
Total payments	\$38,480	\$34,371	\$28,280	36.07%
Average payment per case	\$233.21	\$220.33	\$200.57	16.28%
Average payment per recipient	\$105.71	\$107.75	\$96.52	9.53%
Number of cases with benefits reduced to zero	3	2	6	-50.00%
Number of recipients with benefits reduced to zero	5	4	7	-28.57%
Number of adult recipients with benefit reduced to zero	0	0	0	0%
Number of child recipients with benefit reduced to zero	5	4	7	-28.57%

Two-Parent Families	December 2023	November 2023	December 2022	Annual Change
Number of families receiving TANF Grants	44	38	22	100.00%
Total number of grant recipients	153	134	66	131.82%
Number of adult grant recipients	88	76	29	203.45%
Number of child grant recipients	65	58	37	75.68%
Total payments	\$15,044	\$13,126	\$5,637	166.88%
Average payment per case	\$341.91	\$345.42	\$256.23	33.44%
Average payment per recipient	\$98.33	\$97.96	\$85.41	15.12%
Number of cases with benefits reduced to zero	1	1	0	0%
Number of recipients with benefits reduced to zero	3	3	0	0%
Number of adult recipients with benefit reduced to zero	2	2	0	0%
Number of child recipients with benefit reduced to zero	1	1	0	0%

Note:

For August 2021, a one time payment of \$400 per recipient was included in the Total payments and Average payments. TANF section rules changed to reflect Federal reporting logic effective September 2021. For August 2022, a one-time payment of \$269 per recipient was included in the Total payments and Average payments.

Source:



DIVISION OF FAMILY RESOURCES

Monthly Management Report

Reporting Month: December 2023

Location: Vanderburgh County

TANF - APPLICATIONS

	December 2023	November 2023	December 2022	Annual Change
Number of Applications	302	311	225	34.22%

TANF - RECIPIENTS BY ZIP CODE

ZIP Code	Households	Recipients
47708	1	3
47710	25	54
47711	24	45
47712	8	13
47713	34	87
47714	62	176
47715	46	124
47720	7	11
47725	2	4
Total	209	517



DIVISION OF FAMILY RESOURCES

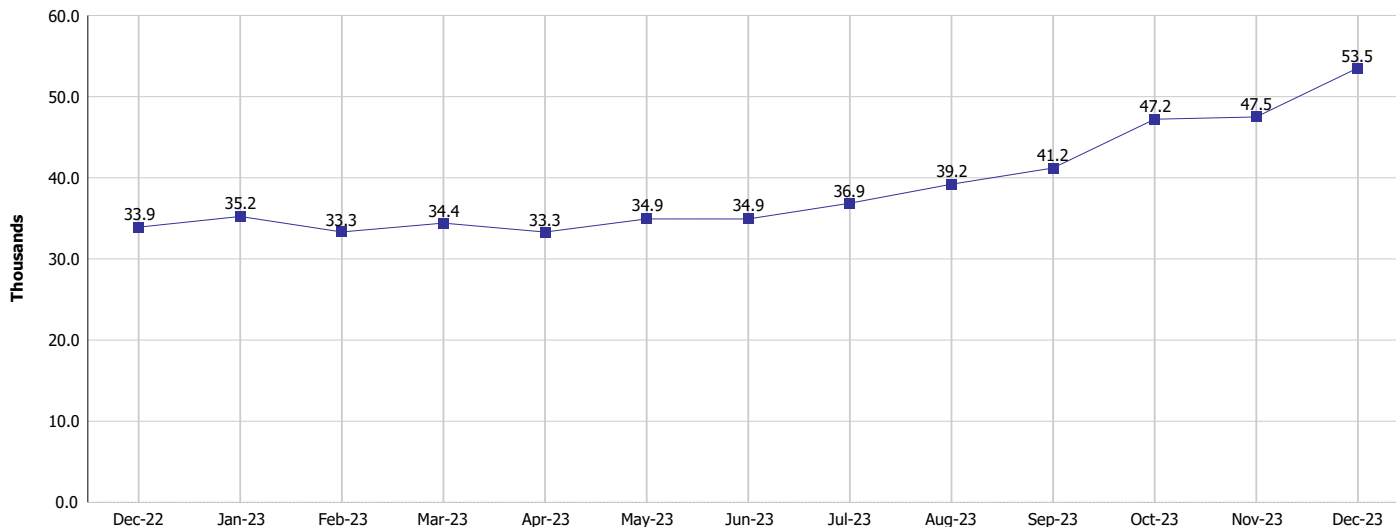
Monthly Management Report

Reporting Month: December 2023

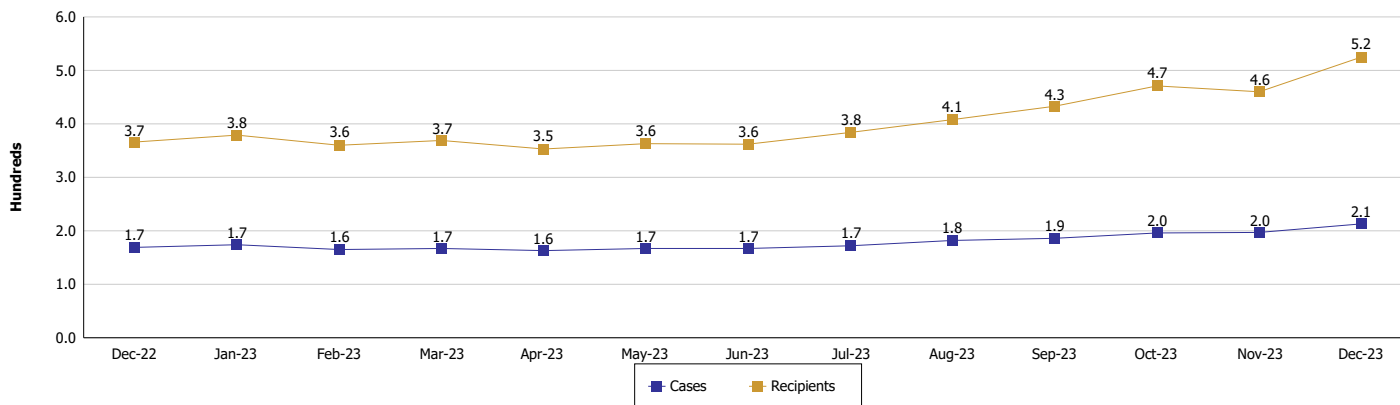
Location: Vanderburgh County

TEMPORARY ASSISTANCE FOR NEEDY FAMILIES (TANF)

TANF Regular And TANF Two-Parent Cash Assistance



TANF Cases and Recipients (TANF Regular and TANF Two-Parent)



Note:

For August 2021, a one time payment of \$400 per recipient was included in the Total payments and Average payments. TANF section rules changed to reflect Federal reporting logic effective September 2021. For August 2022, a one-time payment of \$269 per recipient was included in the Total payments and Average payments.



DIVISION OF FAMILY RESOURCES

Monthly Management Report

Reporting Month: December 2023

Location: Vanderburgh County

SUPPLEMENTAL NUTRITION ASSISTANCE PROGRAM (SNAP)

	December 2023	November 2023	December 2022	Annual Change
Total issuance	\$4,075,757	\$4,074,154	\$3,730,439	9.26%
Number of households receiving SNAP benefits	10,179	10,147	9,711	4.82%
Number of recipients	19,972	19,955	19,029	4.96%
Average issuance per household	\$400.41	\$401.51	\$384.15	4.23%
Average issuance per recipient	\$204.07	\$204.17	\$196.04	4.1%
Number of Applications	1,510	1,610	1,401	7.78%



DIVISION OF FAMILY RESOURCES

Monthly Management Report

Reporting Month: December 2023

Location: Vanderburgh County

SNAP - RECIPIENTS BY ZIP CODE

ZIP Code	Households	Recipients
46176	1	1
46201	1	1
47130	1	1
47140	1	1
47303	1	1
47404	1	1
47542	1	1
47591	1	1
47610	1	1
47615	1	1
47620	2	4
47630	6	17
47635	2	2
47639	2	4
47670	1	6
47708	106	134
47710	1,755	3,324
47711	1,522	3,016
47712	613	1,281
47713	1,889	3,478
47714	2,350	4,803
47715	1,427	2,861
47716	1	3
47719	2	2
47720	380	815
47722	1	1
47724	1	1
47725	97	195
47728	1	1
None	11	14
Totals	10,179	19,972



DIVISION OF FAMILY RESOURCES

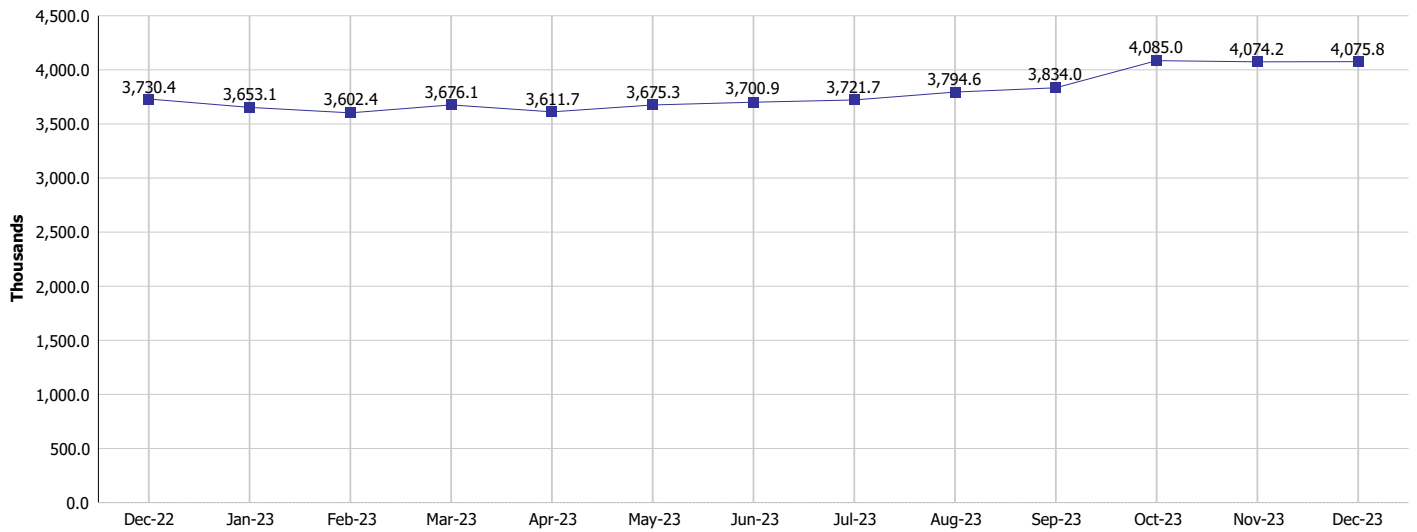
Monthly Management Report

Reporting Month: December 2023

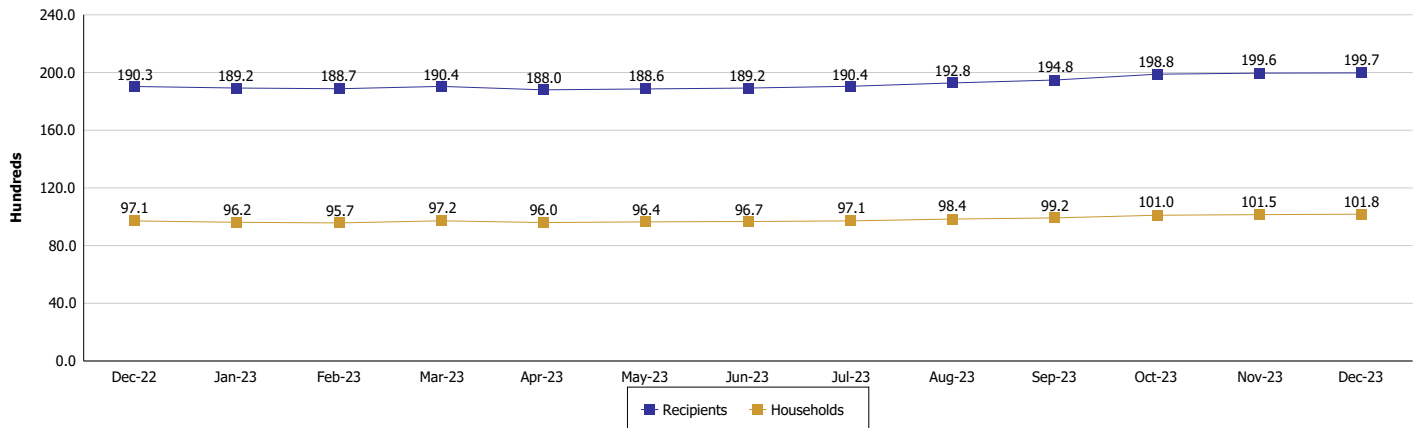
Location: Vanderburgh County

SUPPLEMENTAL NUTRITION ASSISTANCE PROGRAM (SNAP)

SNAP Issuance



SNAP Households and Recipients



Note:

Run Date: Jan 12, 2024



DIVISION OF FAMILY RESOURCES

Monthly Management Report

Reporting Month: December 2023

Location: Vanderburgh County

HIP 2.0 and SNAP

	December 2023	November 2023	December 2022	Annual Change
Total HIP 2.0 Members	23,106	23,415	25,160	-8.16%
HIP Members also SNAP Recipients	6,332	6,406	6,072	4.28%
Percentage HIP Members SNAP Recipients	27.4%	27.4%	24.1%	3.27
HIP Members SNAP ABAWDs	526	522	506	3.95%
Percentage HIP Members SNAP ABAWDs	2.3%	2.2%	2.0%	0.3

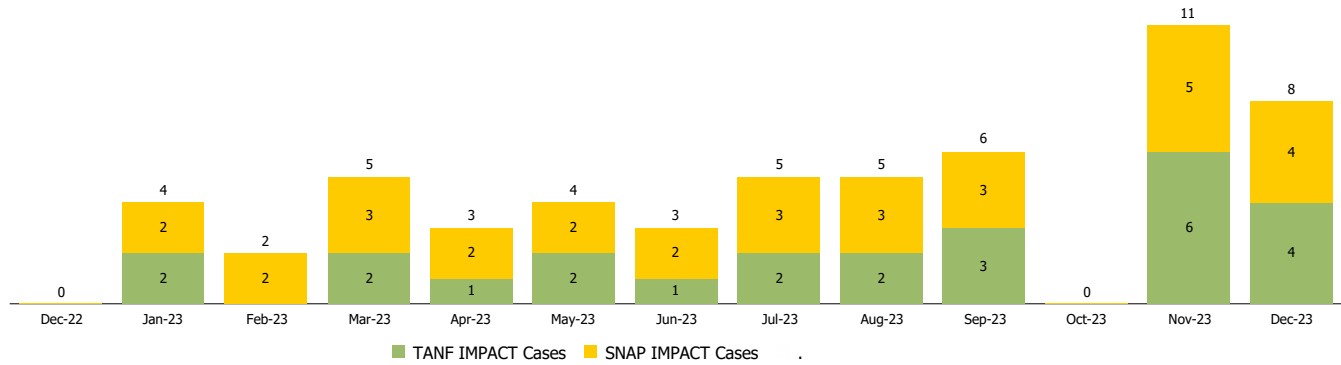
Monthly Management Report

Reporting Month: December 2023 Location: Vanderburgh County

INDIANA MANPOWER PLACEMENT AND COMPREHENSIVE TRAINING (IMPACT)

	December 2023	November 2023	December 2022	Annual Change
Number of IMPACT cases	8	11	0	
Number of TANF IMPACT adults	4	6	0	
Number of SNAP IMPACT Cases	4	5	0	
Total number of adults employed	39	48	99	-60.61%
Number of TANF IMPACT adults newly employed (within past 30 days)	0	0	1	-100.00%
Number of SNAP IMPACT adults employed	39	48	98	-60.20%
Total number of adults ineligible due to employment	51	58	45	13.33%
Number of TANF adults ineligible due to employment	1	3	0	
Number of SNAP adults ineligible due to employment	50	55	45	11.11%

IMPACT Caseloads
(SNAP, TANF, Total Caseload)



Note: Effective January 2022, these numbers have been adjusted to reflect only those actually participating in IMPACT.