



## DIVISION OF FAMILY RESOURCES

# Tipton County Monthly Management Report July 2021

### State of Indiana

Eric Holcomb  
Governor

### Family and Social Services Administration

Jennifer Sullivan, M.D.  
Secretary

### Division of Family Resources

Adrienne Shields  
Director

For questions regarding data on this report contact:  
[office.Communications@fssa.IN.gov](mailto:office.Communications@fssa.IN.gov)



## State of Indiana

Published August 2021



## DIVISION OF FAMILY RESOURCES

### Monthly Management Report

Reporting Month: July 2021

Location: Tipton County

#### TEMPORARY ASSISTANCE FOR NEEDY FAMILIES (TANF)

Child-Only and One-Parent Families	Jul 31, 2021	June 2021	July 2020	Annual Change
Number of families receiving TANF Grants	15	18	15	0.00%
Total number of grant recipients	31	38	34	-8.82%
Number of adult grant recipients	4	6	2	100.00%
Number of child grant recipients	27	32	32	-15.62%
Total payments	\$3,010	\$3,634	\$3,047	-1.21%
Average payment per case	\$200.67	\$201.89	\$203.13	-1.21%
Average payment per recipient	\$97.10	\$95.63	\$89.62	8.35%
Number of cases with benefits reduced to zero	1	0	0	0%
Number of recipients with benefits reduced to zero	4	0	0	0%
Number of adult recipients with benefit reduced to zero	1	0	0	0%
Number of child recipients with benefit reduced to zero	3	0	0	0%

Two-Parent Families	Jul 31, 2021	June 2021	July 2020	Annual Change
Number of families receiving TANF Grants	2	3	1	100.00%
Total number of grant recipients	3	4	4	-25.00%
Number of adult grant recipients	0	0	2	-100.00%
Number of child grant recipients	3	4	2	50.00%
Total payments	\$337	\$476	\$346	-2.60%
Average payment per case	\$168.50	\$158.67	\$346.00	-51.30%
Average payment per recipient	\$112.33	\$119.00	\$86.50	29.87%
Number of cases with benefits reduced to zero	0	1	0	0%
Number of recipients with benefits reduced to zero	0	3	0	0%
Number of adult recipients with benefit reduced to zero	0	2	0	0%
Number of child recipients with benefit reduced to zero	0	1	0	0%

**Note:**

All data July 2014 and following will be broken out according to the new DFR region structure effective July 1 2014.

Source:



## DIVISION OF FAMILY RESOURCES

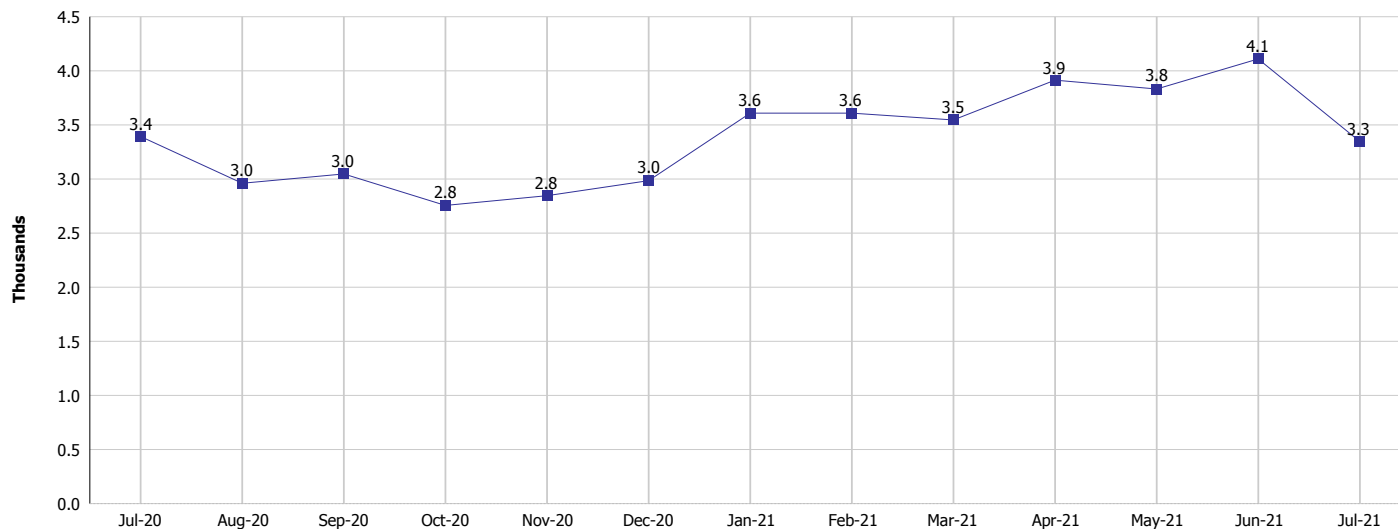
### Monthly Management Report

Reporting Month: July 2021

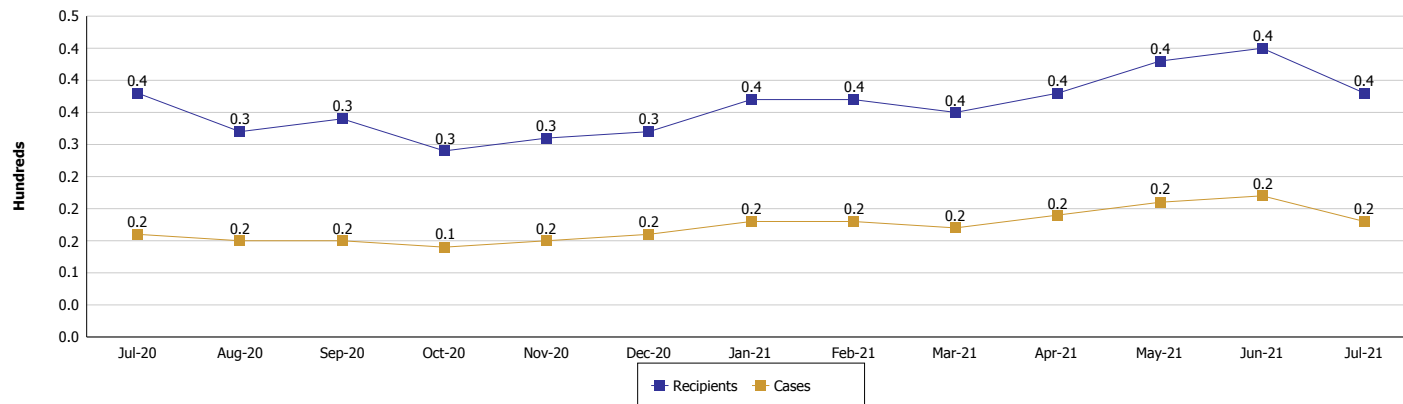
Location: Tipton County

#### TEMPORARY ASSISTANCE FOR NEEDY FAMILIES (TANF)

#### TANF Regular And TANF Two-Parent Cash Assistance



#### TANF Cases and Recipients (TANF Regular and TANF Two-Parent)



**Note:**

All data July 2014 and following will be broken out according to the new DFR region structure effective July 1 2014.



## DIVISION OF FAMILY RESOURCES

### Monthly Management Report

Reporting Month: July 2021

Location: Tipton County

#### SUPPLEMENTAL NUTRITION ASSISTANCE PROGRAM (SNAP)

	July 2021	June 2021	July 2020	Annual Change
Total issuance	\$177,099	\$185,440	\$131,070	35.12%
Number of households receiving SNAP benefits	342	352	323	5.88%
Number of recipients	779	806	764	1.96%
Average issuance per household	\$517.83	\$526.82	\$405.79	27.61%
Average issuance per recipient	\$227.34	\$230.07	\$171.56	32.51%

**Note:**

All data July 2014 and following will be broken out according to the new DFR region structure effective July 1 2014.



## DIVISION OF FAMILY RESOURCES

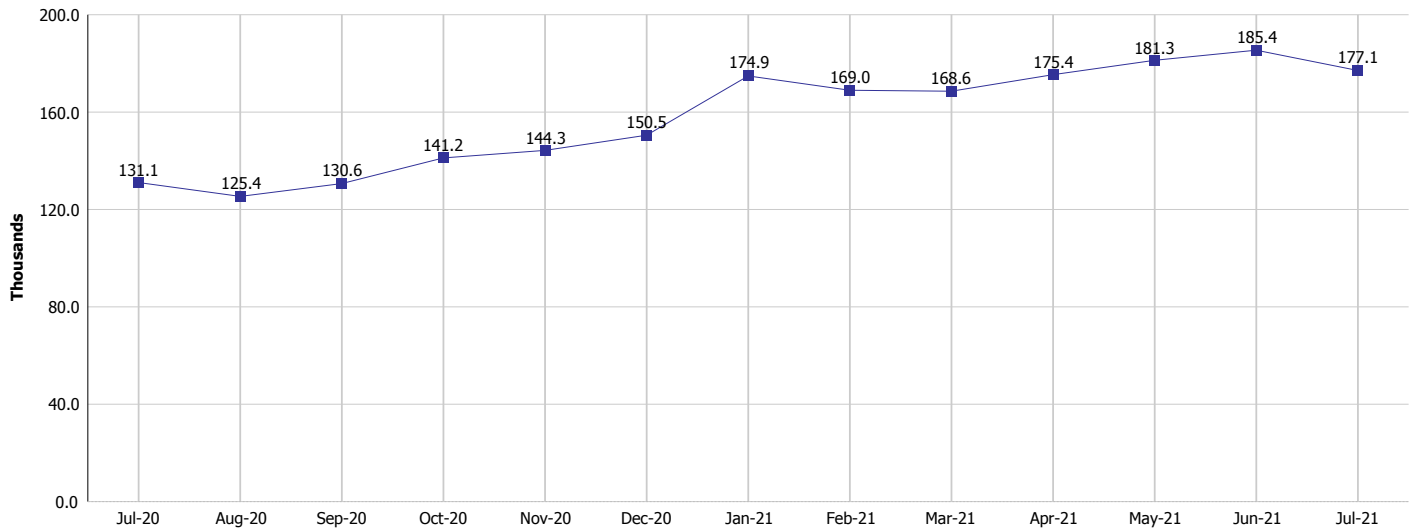
### Monthly Management Report

Reporting Month: July 2021

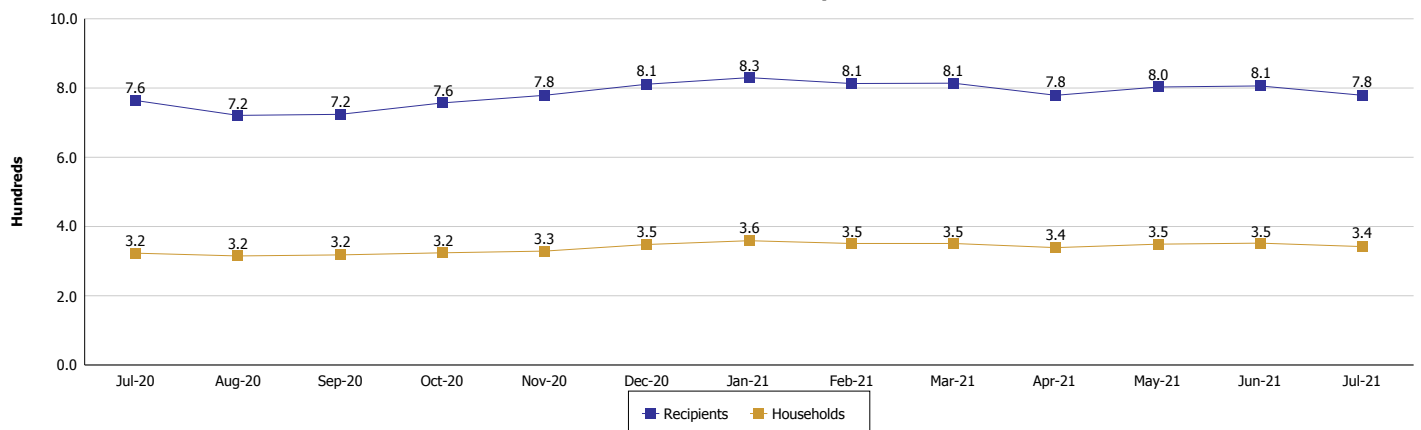
Location: Tipton County

#### SUPPLEMENTAL NUTRITION ASSISTANCE PROGRAM (SNAP)

#### SNAP Issuance



#### SNAP Households and Recipients



#### Note:

All data July 2014 and following will be broken out according to the new DFR region structure effective July 1 2021.



## DIVISION OF FAMILY RESOURCES

### Monthly Management Report

Reporting Month: July 2021

Location: Tipton County

#### HIP 2.0 and SNAP

	July 2021	June 2021	July 2020	Annual Change
Total HIP 2.0 Members	1,079	1,058	783	37.80%
HIP Members also SNAP Recipients	257	249	218	17.89%
Percentage HIP Members SNAP Recipients	23.8%	23.5%	27.8%	-4.02
HIP Members SNAP ABAWDs	0	0	1	-100.00%
Percentage HIP Members SNAP ABAWDs	0	0	0.1%	-0.1

**Note:**

All data July 2014 and following will be broken out according to the new DFR region structure effective July 1 2014.



## DIVISION OF FAMILY RESOURCES

### Monthly Management Report

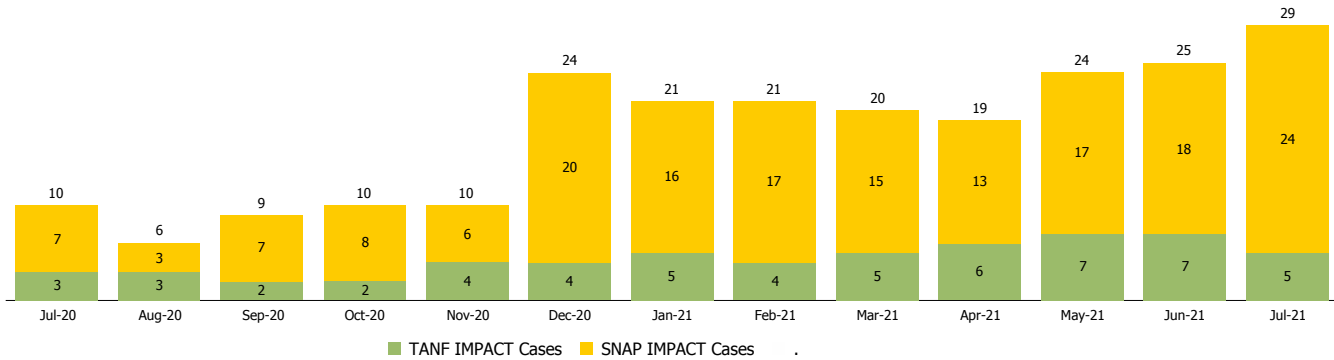
Reporting Month: July 2021

Location: Tipton County

#### INDIANA MANPOWER PLACEMENT AND COMPREHENSIVE TRAINING (IMPACT)

	July 2021	June 2021	July 2020	Annual Change
Number of IMPACT cases	29	25	10	190.00%
Number of TANF IMPACT adults	5	7	3	66.67%
Number of SNAP IMPACT Cases	24	18	7	242.86%
Total number of adults employed	3	5	3	0.00%
Number of TANF IMPACT adults newly employed (within past 30 days)	0	0	1	-100.00%
Number of SNAP IMPACT adults employed	3	5	2	50.00%
Total number of adults ineligible due to employment	4	4	22	-81.82%
Number of TANF adults ineligible due to employment	0	0	0	
Number of SNAP adults ineligible due to employment	4	4	22	-81.82%

**IMPACT Caseloads**  
(SNAP, TANF, Total Caseload)



**Note:**

All data July 2014 and following will be broken out according to the new DFR region structure effective July 1 2014.