



DIVISION OF FAMILY RESOURCES

Switzerland County Monthly Management Report October 2025

State of Indiana

Mike Braun
Governor

Family and Social Services Administration

Mitch Roob
Secretary

Division of Family Resources

Sunshine Beam
Director

For questions regarding data on this report contact:
office.Communications@fssa.IN.gov



State of Indiana

Published November 2025



DIVISION OF FAMILY RESOURCES

Monthly Management Report

Reporting Month: October 2025

Location: Switzerland County

TEMPORARY ASSISTANCE FOR NEEDY FAMILIES (TANF)

Child-Only and One-Parent Families	October 2025	September 2025	October 2024	Annual Change
Number of families receiving TANF Grants	10	10	18	-44.44%
Total number of grant recipients	19	15	32	-40.62%
Number of adult grant recipients	1	0	4	-75.00%
Number of child grant recipients	18	15	28	-35.71%
Total payments	\$2,831	\$2,729	\$6,011	-52.90%
Average payment per case	\$283.10	\$272.90	\$333.94	-15.23%
Average payment per recipient	\$149.00	\$181.93	\$187.84	-20.68%
Number of cases with benefits reduced to zero	0	0	0	0%
Number of recipients with benefits reduced to zero	0	0	0	0%
Number of adult recipients with benefit reduced to zero	0	0	0	0%
Number of child recipients with benefit reduced to zero	0	0	0	0%

Pregnancy TANF Families	October 2025	September 2025	October 2024	Annual Change
Number of families receiving TANF Grants	0	0	0	0%
Total number of grant recipients	0	0	0	0%
Total payments	\$0.00	\$0.00	\$0.00	0%
Average payment per case	\$0.00	\$0.00	\$0.00	0.00%
Average payment per recipient	\$0.00	\$0.00	\$0.00	0.00%
Number of cases with benefits reduced to zero	0	0	0	0%
Number of recipients with benefits reduced to zero	0	0	0	0%



DIVISION OF FAMILY RESOURCES

Monthly Management Report

Two-Parent Families	October 2025	September 2025	October 2024	Annual Change
Number of families receiving TANF Grants	0	0	0	0%
Total number of grant recipients	0	0	0	0%
Number of adult grant recipients	0	0	0	0%
Number of child grant recipients	0	0	0	0%
Total payments	\$0	\$0	\$0	0%
Average payment per case	\$0.00	\$0.00	\$0.00	0.00%
Average payment per recipient	\$0.00	\$0.00	\$0.00	0.00%
Number of cases with benefits reduced to zero	0	0	0	0%
Number of recipients with benefits reduced to zero	0	0	0	0%
Number of adult recipients with benefit reduced to zero	0	0	0	0%
Number of child recipients with benefit reduced to zero	0	0	0	0%

Note: The two-parent case count includes cases in which a parent living in the home is excluded from receiving TANF benefits but whose income is used in the TANF eligibility determination.



DIVISION OF FAMILY RESOURCES

Monthly Management Report

Reporting Month: October 2025

Location: Switzerland County

TANF - APPLICATIONS

	October 2025	September 2025	October 2024	Annual Change
Number of Applications	9	9	7	28.57%

TANF - RECIPIENTS BY ZIP CODE

ZIP Code	Households	Recipients
47011	1	1
47020	2	4
47038	1	1
47040	1	2
47043	5	11
Total	10	19



DIVISION OF FAMILY RESOURCES

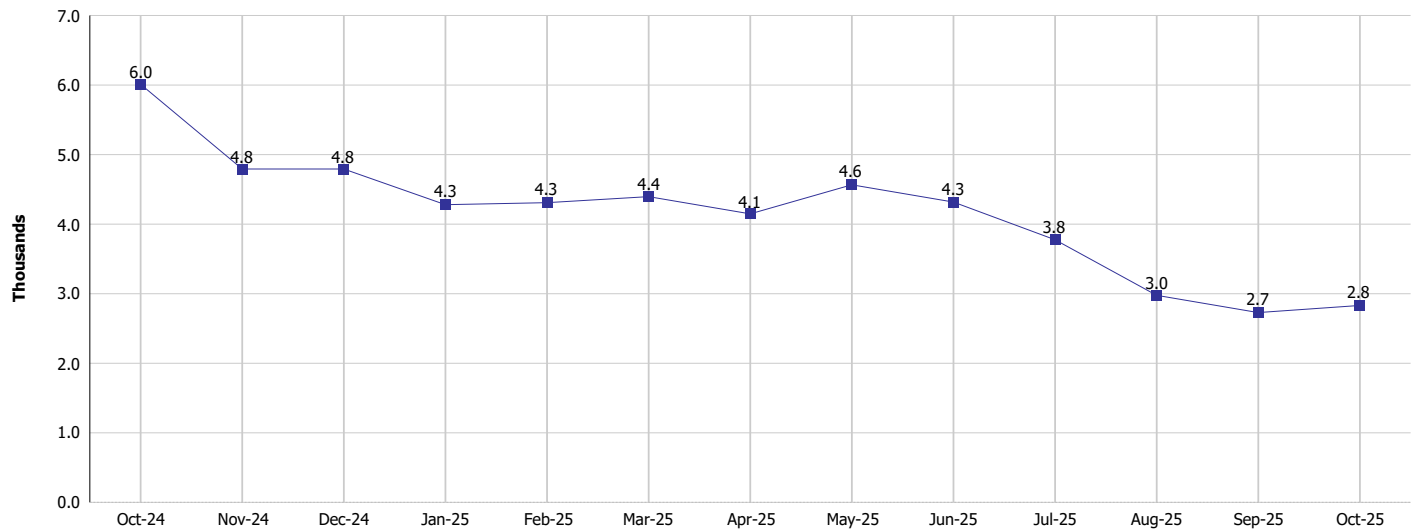
Monthly Management Report

Reporting Month: October 2025

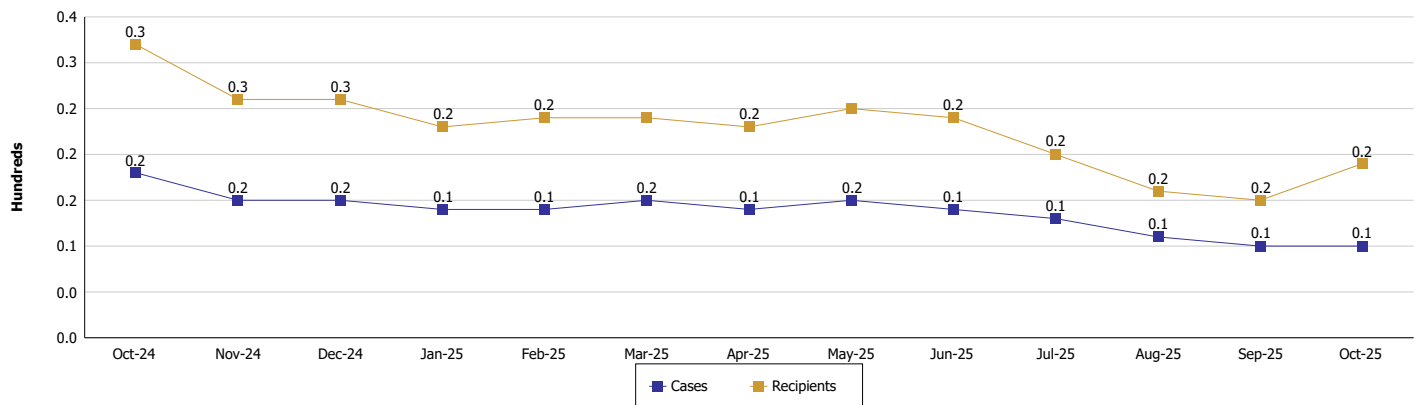
Location: Switzerland County

TEMPORARY ASSISTANCE FOR NEEDY FAMILIES (TANF)

TANF Regular And TANF Two-Parent Cash Assistance



TANF Cases and Recipients
(TANF Regular and TANF Two-Parent)





DIVISION OF FAMILY RESOURCES

Monthly Management Report

Reporting Month: October 2025	Location: Switzerland County
SUPPLEMENTAL NUTRITION ASSISTANCE PROGRAM (SNAP)	

	October 2025	September 2025	October 2024	Annual Change
Total issuance	\$169,558	\$169,093	\$181,227	-6.44%
Number of households receiving SNAP benefits	423	424	433	-2.31%
Number of recipients	908	915	953	-4.72%
Average issuance per household	\$400.85	\$398.8	\$418.54	-4.23%
Average issuance per recipient	\$186.74	\$184.8	\$190.16	-1.8%
Number of Applications	28	58	46	-39.13%



DIVISION OF FAMILY RESOURCES

Monthly Management Report

Reporting Month: October 2025

Location: Switzerland County

SNAP - RECIPIENTS BY ZIP CODE

ZIP Code	Households	Recipients
47011	15	29
47018	2	5
47019	1	1
47020	53	116
47038	80	198
47040	29	86
47043	227	438
47201	1	4
47224	6	16
47250	9	15
Totals	423	908



DIVISION OF FAMILY RESOURCES

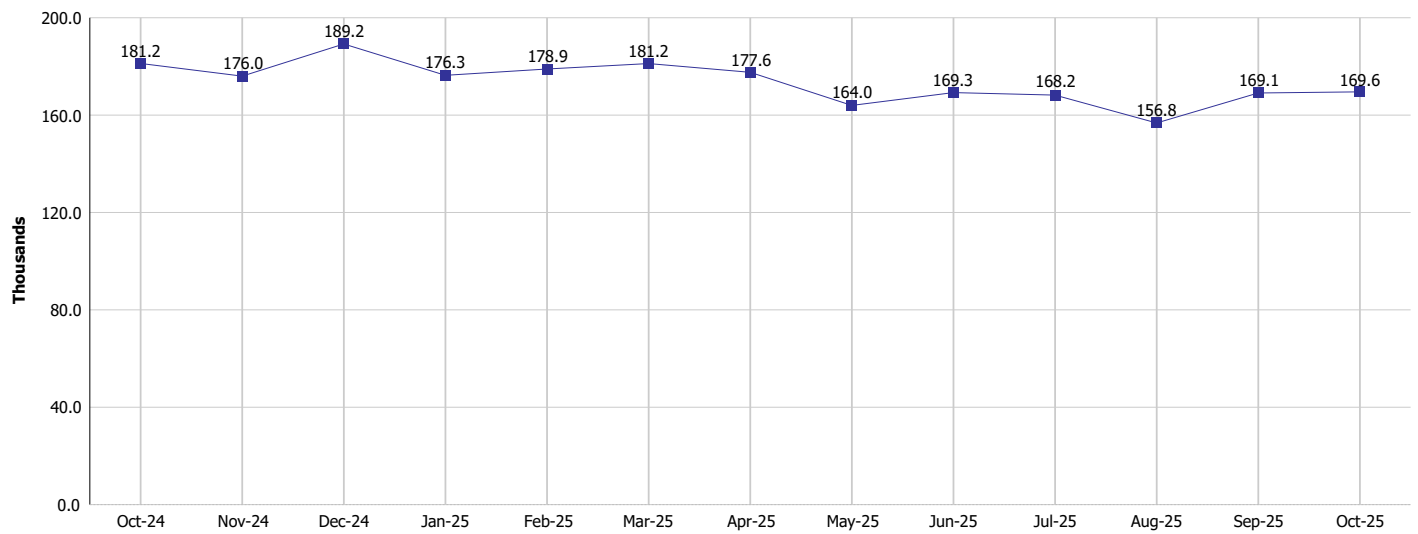
Monthly Management Report

Reporting Month: October 2025

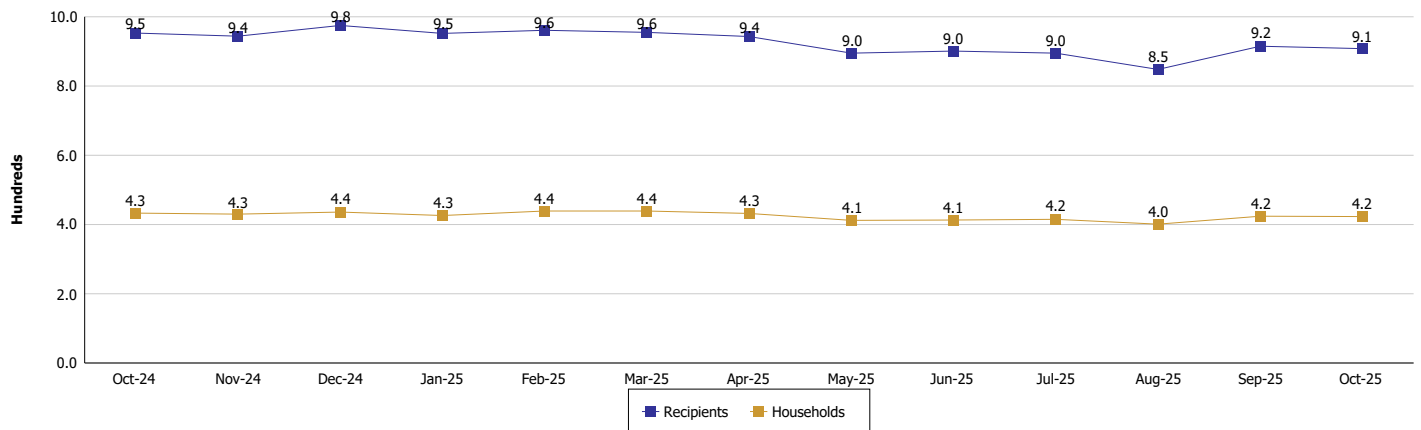
Location: Switzerland County

SUPPLEMENTAL NUTRITION ASSISTANCE PROGRAM (SNAP)

SNAP Issuance



SNAP Households and Recipients





DIVISION OF FAMILY RESOURCES

Monthly Management Report

Reporting Month: October 2025

Location: Switzerland County

HIP 2.0 and SNAP

	October 2025	September 2025	October 2024	Annual Change
Total HIP 2.0 Members	993	987	1,072	-7.37%
HIP Members also SNAP Recipients	284	279	298	-4.70%
Percentage HIP Members SNAP Recipients	28.6%	28.3%	27.8%	0.80
HIP Members SNAP ABAWDs	7	10	10	-30.00%
Percentage HIP Members SNAP ABAWDs	0.7%	1.0%	0.9%	-0.2



DIVISION OF FAMILY RESOURCES

Monthly Management Report

Reporting Month: October 2025	Location: Switzerland County
-------------------------------	------------------------------

INDIANA MANPOWER PLACEMENT AND COMPREHENSIVE TRAINING (IMPACT)

	October 2025	September 2025	October 2024	Annual Change
Number of IMPACT cases	0	0	3	-100.00%
Number of TANF IMPACT adults	0	0	1	-100.00%
Number of SNAP IMPACT Cases	0	0	2	-100.00%
Total number of adults employed	1	7	0	
Number of TANF IMPACT adults newly employed (within past 30 days)	0	0	0	
Number of SNAP IMPACT adults employed	1	7	0	
Total number of adults ineligible due to employment	7	2	2	250.00%
Number of TANF adults ineligible due to employment	0	0	0	
Number of SNAP adults ineligible due to employment	7	2	2	250.00%

