



## DIVISION OF FAMILY RESOURCES

# Steuben County Monthly Management Report July 2021

### State of Indiana

Eric Holcomb  
Governor

### Family and Social Services Administration

Jennifer Sullivan, M.D.  
Secretary

### Division of Family Resources

Adrienne Shields  
Director

For questions regarding data on this report contact:  
[office.Communications@fssa.IN.gov](mailto:office.Communications@fssa.IN.gov)



## State of Indiana

Published August 2021



## DIVISION OF FAMILY RESOURCES

### Monthly Management Report

Reporting Month: July 2021

Location: Steuben County

#### TEMPORARY ASSISTANCE FOR NEEDY FAMILIES (TANF)

Child-Only and One-Parent Families	Jul 31, 2021	June 2021	July 2020	Annual Change
Number of families receiving TANF Grants	12	11	16	-25.00%
Total number of grant recipients	22	22	31	-29.03%
Number of adult grant recipients	5	5	2	150.00%
Number of child grant recipients	17	17	29	-41.38%
Total payments	\$2,277	\$2,332	\$3,168	-28.12%
Average payment per case	\$189.75	\$212.00	\$198.00	-4.17%
Average payment per recipient	\$103.50	\$106.00	\$102.19	1.28%
Number of cases with benefits reduced to zero	1	1	1	0.00%
Number of recipients with benefits reduced to zero	2	2	0	0%
Number of adult recipients with benefit reduced to zero	0	0	0	0%
Number of child recipients with benefit reduced to zero	2	2	0	0%

Two-Parent Families	Jul 31, 2021	June 2021	July 2020	Annual Change
Number of families receiving TANF Grants	5	5	4	25.00%
Total number of grant recipients	7	7	13	-46.15%
Number of adult grant recipients	0	0	4	-100.00%
Number of child grant recipients	7	7	9	-22.22%
Total payments	\$813	\$813	\$999	-18.62%
Average payment per case	\$162.60	\$162.60	\$249.75	-34.89%
Average payment per recipient	\$116.14	\$116.14	\$76.85	51.14%
Number of cases with benefits reduced to zero	0	1	0	0%
Number of recipients with benefits reduced to zero	0	5	0	0%
Number of adult recipients with benefit reduced to zero	0	1	0	0%
Number of child recipients with benefit reduced to zero	0	4	0	0%

**Note:**

All data July 2014 and following will be broken out according to the new DFR region structure effective July 1 2014.

Source:



## DIVISION OF FAMILY RESOURCES

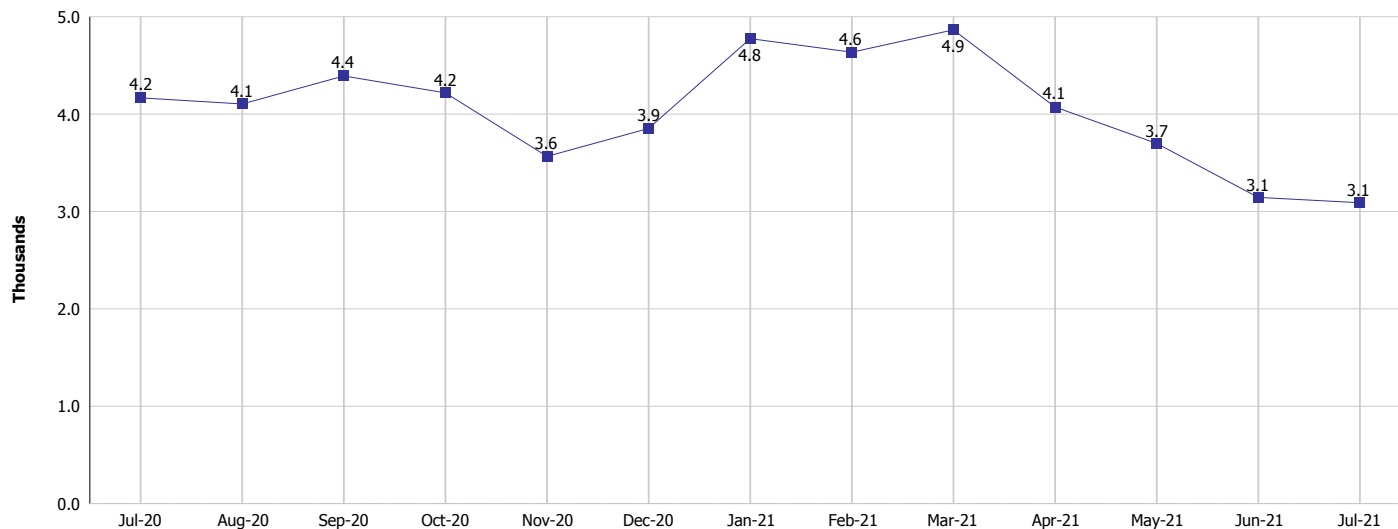
### Monthly Management Report

Reporting Month: July 2021

Location: Steuben County

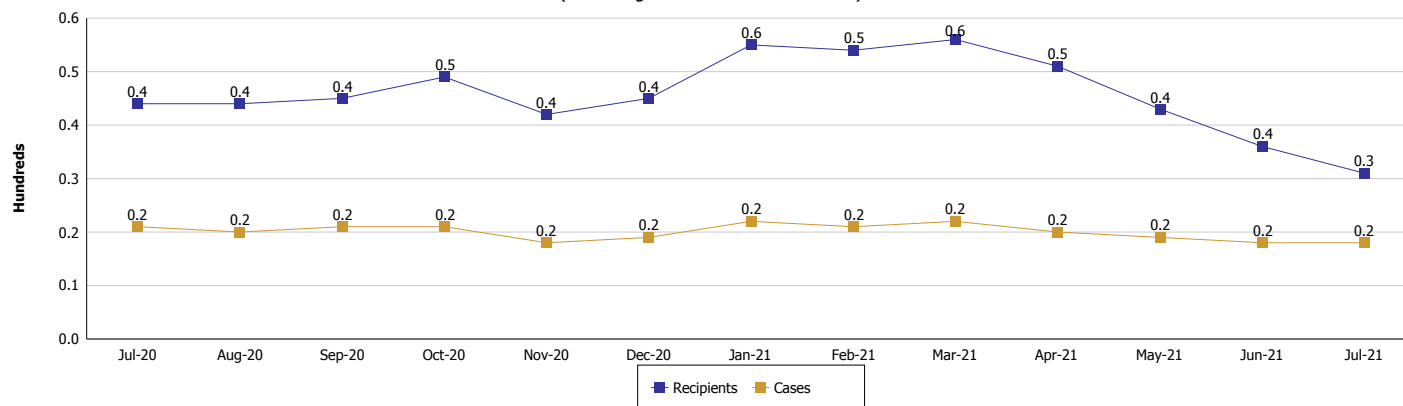
#### TEMPORARY ASSISTANCE FOR NEEDY FAMILIES (TANF)

#### TANF Regular And TANF Two-Parent Cash Assistance



#### TANF Cases and Recipients

(TANF Regular and TANF Two-Parent)



#### Note:

All data July 2014 and following will be broken out according to the new DFR region structure effective July 1 2014.



## DIVISION OF FAMILY RESOURCES

### Monthly Management Report

Reporting Month: July 2021

Location: Steuben County

#### SUPPLEMENTAL NUTRITION ASSISTANCE PROGRAM (SNAP)

	July 2021	June 2021	July 2020	Annual Change
Total issuance	\$446,133	\$463,556	\$362,405	23.10%
Number of households receiving SNAP benefits	914	927	947	-3.48%
Number of recipients	1,982	2,038	2,066	-4.07%
Average issuance per household	\$488.11	\$500.06	\$382.69	27.55%
Average issuance per recipient	\$225.09	\$227.46	\$175.41	28.32%

**Note:**

All data July 2014 and following will be broken out according to the new DFR region structure effective July 1 2014.



# DIVISION OF FAMILY RESOURCES

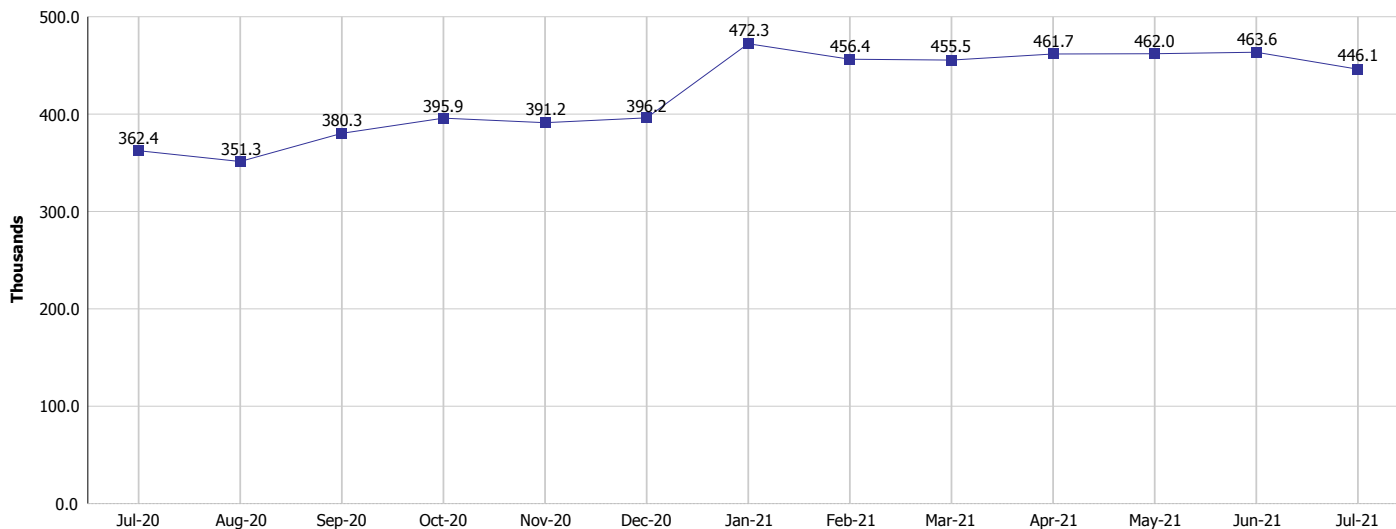
## Monthly Management Report

Reporting Month: July 2021

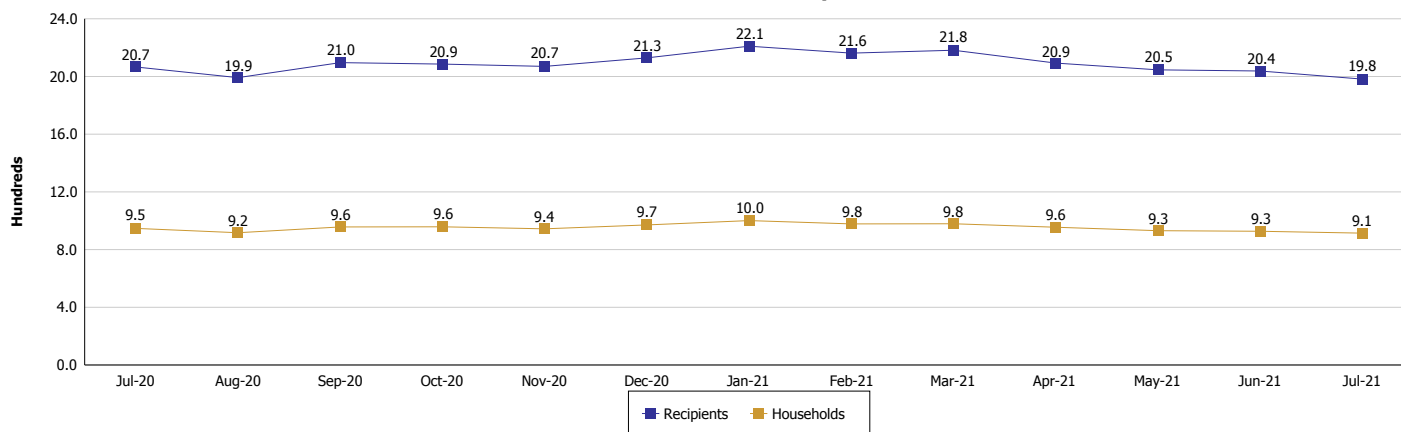
Location: Steuben County

### SUPPLEMENTAL NUTRITION ASSISTANCE PROGRAM (SNAP)

#### SNAP Issuance



#### SNAP Households and Recipients



**Note:**

All data July 2014 and following will be broken out according to the new DFR region structure effective July 1 2014.



## DIVISION OF FAMILY RESOURCES

### Monthly Management Report

Reporting Month: July 2021

Location: Steuben County

#### HIP 2.0 and SNAP

	July 2021	June 2021	July 2020	Annual Change
Total HIP 2.0 Members	2,891	2,845	2,114	36.75%
HIP Members also SNAP Recipients	607	613	561	8.20%
Percentage HIP Members SNAP Recipients	21.0%	21.5%	26.5%	-5.54
HIP Members SNAP ABAWDs	0	0	1	-100.00%
Percentage HIP Members SNAP ABAWDs	0	0	0.0%	0.0

**Note:**

All data July 2014 and following will be broken out according to the new DFR region structure effective July 1 2014.



## DIVISION OF FAMILY RESOURCES

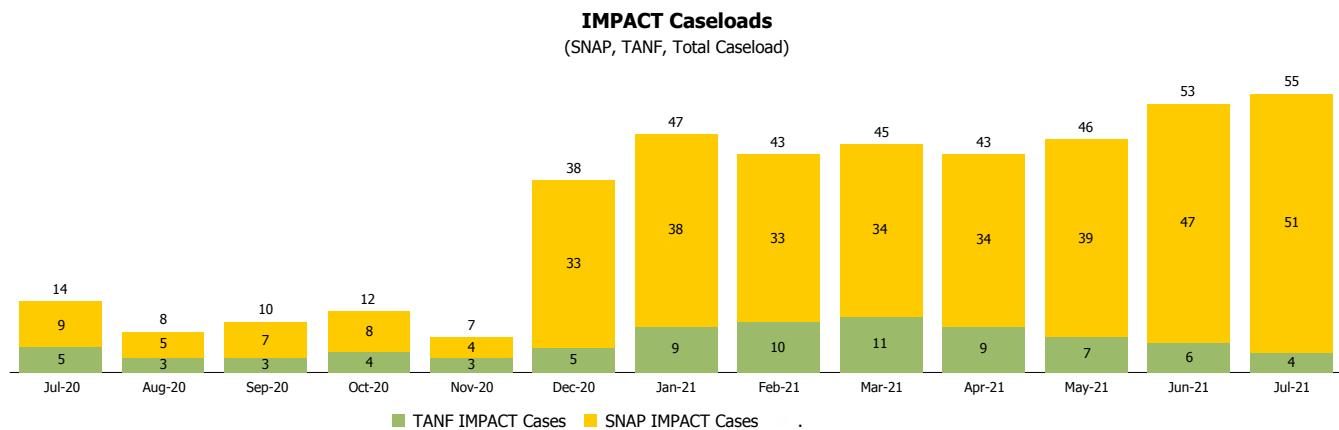
### Monthly Management Report

Reporting Month: July 2021

Location: Steuben County

#### INDIANA MANPOWER PLACEMENT AND COMPREHENSIVE TRAINING (IMPACT)

	July 2021	June 2021	July 2020	Annual Change
Number of IMPACT cases	55	53	14	292.86%
Number of TANF IMPACT adults	4	6	5	-20.00%
Number of SNAP IMPACT Cases	51	47	9	466.67%
Total number of adults employed	5	3	2	150.00%
Number of TANF IMPACT adults newly employed (within past 30 days)	0	0	0	
Number of SNAP IMPACT adults employed	5	3	2	150.00%
Total number of adults ineligible due to employment	11	13	39	-71.79%
Number of TANF adults ineligible due to employment	0	0	0	
Number of SNAP adults ineligible due to employment	11	13	39	-71.79%



**Note:**

All data July 2014 and following will be broken out according to the new DFR region structure effective July 1 2014.