



DIVISION OF FAMILY RESOURCES

Starke County Monthly Management Report December 2023

State of Indiana

Eric Holcomb
Governor

Family and Social Services Administration

Dan Rusyniak, MD
Secretary

Division of Family Resources

Adrienne Shields
Director

For questions regarding data on this report contact:
office.Communications@fssa.IN.gov



State of Indiana

Published January 2024



DIVISION OF FAMILY RESOURCES

Monthly Management Report

Reporting Month: December 2023

Location: Starke County

TEMPORARY ASSISTANCE FOR NEEDY FAMILIES (TANF)

Child-Only and One-Parent Families	December 2023	November 2023	December 2022	Annual Change
Number of families receiving TANF Grants	12	12	13	-7.69%
Total number of grant recipients	19	21	23	-17.39%
Number of adult grant recipients	1	1	0	0%
Number of child grant recipients	18	20	23	-21.74%
Total payments	\$2,274	\$2,404	\$2,359	-3.60%
Average payment per case	\$189.50	\$200.33	\$181.46	4.43%
Average payment per recipient	\$119.68	\$114.48	\$102.57	16.69%
Number of cases with benefits reduced to zero	0	0	0	0%
Number of recipients with benefits reduced to zero	0	0	0	0%
Number of adult recipients with benefit reduced to zero	0	0	0	0%
Number of child recipients with benefit reduced to zero	0	0	0	0%

Two-Parent Families	December 2023	November 2023	December 2022	Annual Change
Number of families receiving TANF Grants	0	0	0	0%
Total number of grant recipients	0	0	0	0%
Number of adult grant recipients	0	0	0	0%
Number of child grant recipients	0	0	0	0%
Total payments	\$0	\$0	\$0	0%
Average payment per case	\$0.00	\$0.00	\$0.00	0.00%
Average payment per recipient	\$0.00	\$0.00	\$0.00	0.00%
Number of cases with benefits reduced to zero	0	0	0	0%
Number of recipients with benefits reduced to zero	0	0	0	0%
Number of adult recipients with benefit reduced to zero	0	0	0	0%
Number of child recipients with benefit reduced to zero	0	0	0	0%

Note:

For August 2021, a one time payment of \$400 per recipient was included in the Total payments and Average payments. TANF section rules changed to reflect Federal reporting logic effective September 2021. For August 2022, a one-time payment of \$269 per recipient was included in the Total payments and Average payments.

Source:



DIVISION OF FAMILY RESOURCES

Monthly Management Report

Reporting Month: December 2023

Location: Starke County

TANF - APPLICATIONS

	December 2023	November 2023	December 2022	Annual Change
Number of Applications	17	18	15	13.33%

TANF - RECIPIENTS BY ZIP CODE

ZIP Code	Households	Recipients
46366	2	2
46374	2	4
46531	1	4
46532	1	1
46534	6	8
Total	12	19



DIVISION OF FAMILY RESOURCES

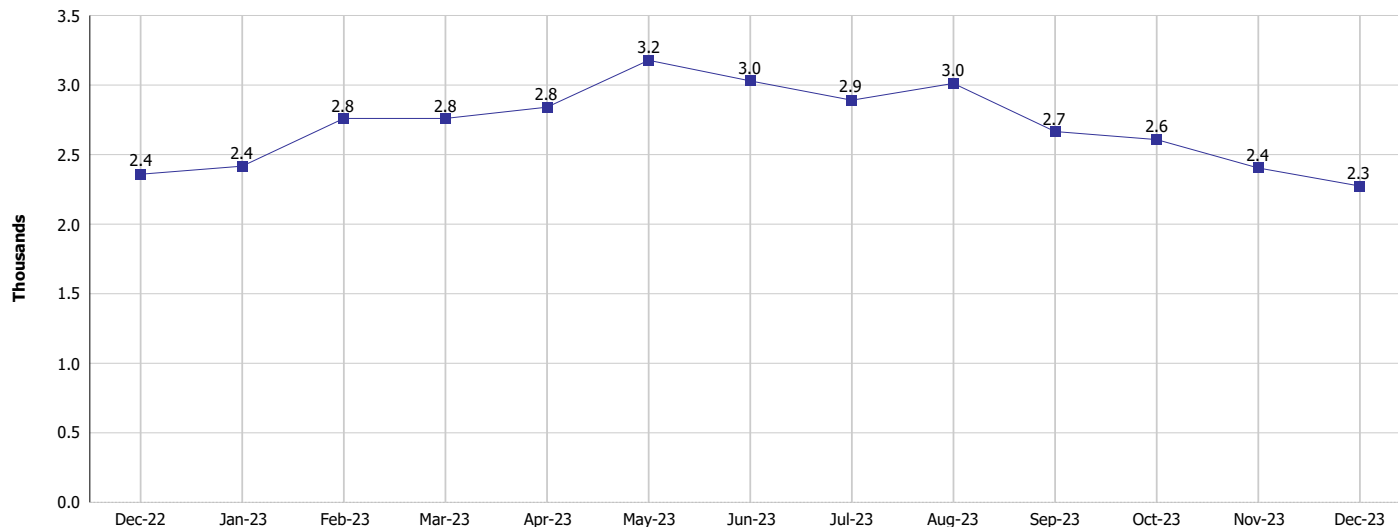
Monthly Management Report

Reporting Month: December 2023

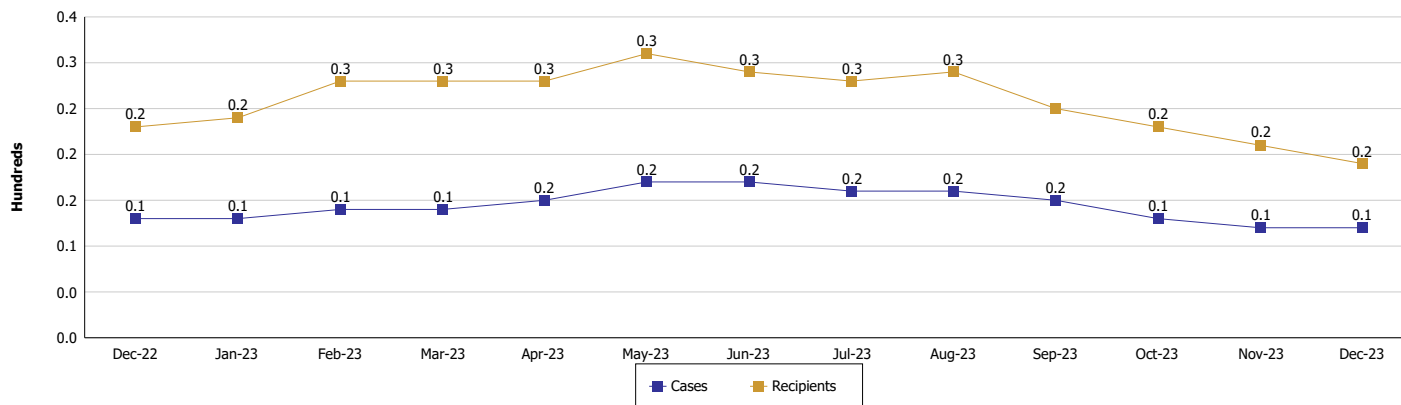
Location: Starke County

TEMPORARY ASSISTANCE FOR NEEDY FAMILIES (TANF)

TANF Regular And TANF Two-Parent Cash Assistance



TANF Cases and Recipients (TANF Regular and TANF Two-Parent)



Note:

For August 2021, a one time payment of \$400 per recipient was included in the Total payments and Average payments. TANF section rules changed to reflect Federal reporting logic effective September 2021. For August 2022, a one-time payment of \$269 per recipient was included in the Total payments and Average payments.



DIVISION OF FAMILY RESOURCES

Monthly Management Report

Reporting Month: December 2023

Location: Starke County

SUPPLEMENTAL NUTRITION ASSISTANCE PROGRAM (SNAP)

	December 2023	November 2023	December 2022	Annual Change
Total issuance	\$460,534	\$449,848	\$448,047	2.79%
Number of households receiving SNAP benefits	1,203	1,177	1,162	3.53%
Number of recipients	2,441	2,403	2,447	-0.25%
Average issuance per household	\$382.82	\$382.2	\$385.58	-0.72%
Average issuance per recipient	\$188.67	\$187.2	\$183.1	3.04%
Number of Applications	120	135	121	-0.83%



DIVISION OF FAMILY RESOURCES

Monthly Management Report

Reporting Month: December 2023

Location: Starke County

SNAP - RECIPIENTS BY ZIP CODE

ZIP Code	Households	Recipients
46360	1	1
46366	302	607
46374	47	103
46391	1	1
46511	19	45
46531	52	112
46532	62	143
46534	607	1,194
46554	1	4
46574	72	145
46580	1	1
46617	1	3
46960	26	59
46968	8	20
46996	1	1
47946	2	2
Totals	1,203	2,441



DIVISION OF FAMILY RESOURCES

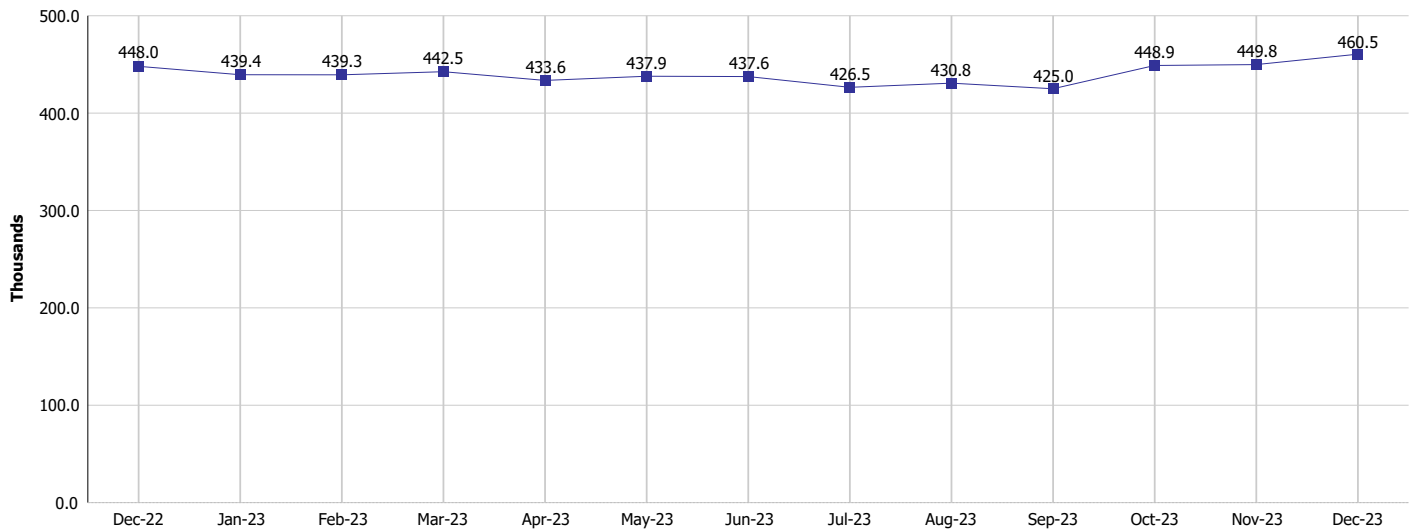
Monthly Management Report

Reporting Month: December 2023

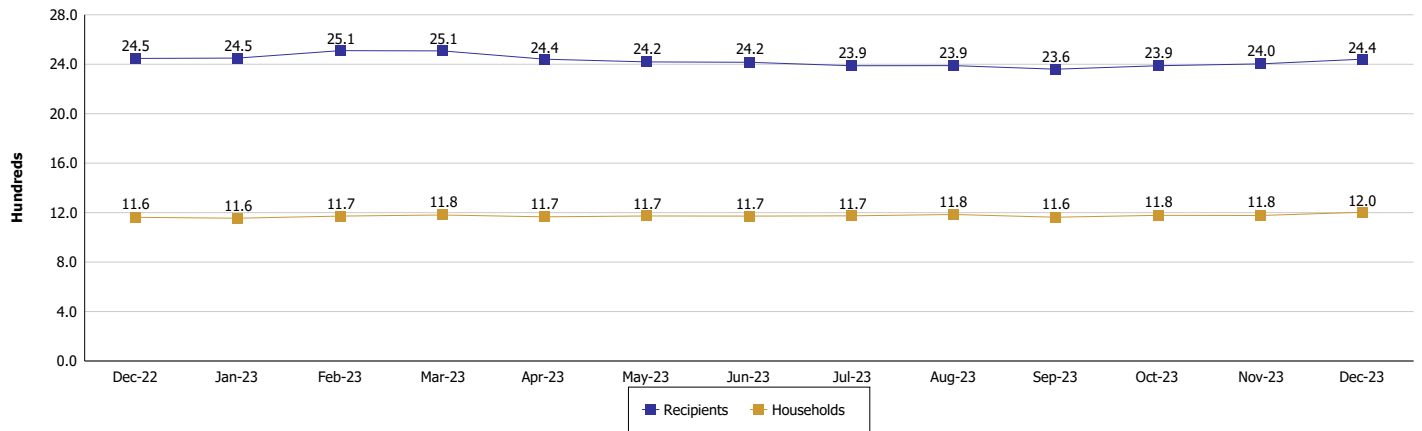
Location: Starke County

SUPPLEMENTAL NUTRITION ASSISTANCE PROGRAM (SNAP)

SNAP Issuance



SNAP Households and Recipients



Note:

Run Date: Jan 12, 2024



DIVISION OF FAMILY RESOURCES

Monthly Management Report

Reporting Month: December 2023

Location: Starke County

HIP 2.0 and SNAP

	December 2023	November 2023	December 2022	Annual Change
Total HIP 2.0 Members	3,029	3,048	3,394	-10.75%
HIP Members also SNAP Recipients	827	796	784	5.48%
Percentage HIP Members SNAP Recipients	27.3%	26.1%	23.1%	4.20
HIP Members SNAP ABAWDs	53	39	49	8.16%
Percentage HIP Members SNAP ABAWDs	1.7%	1.3%	1.4%	0.3

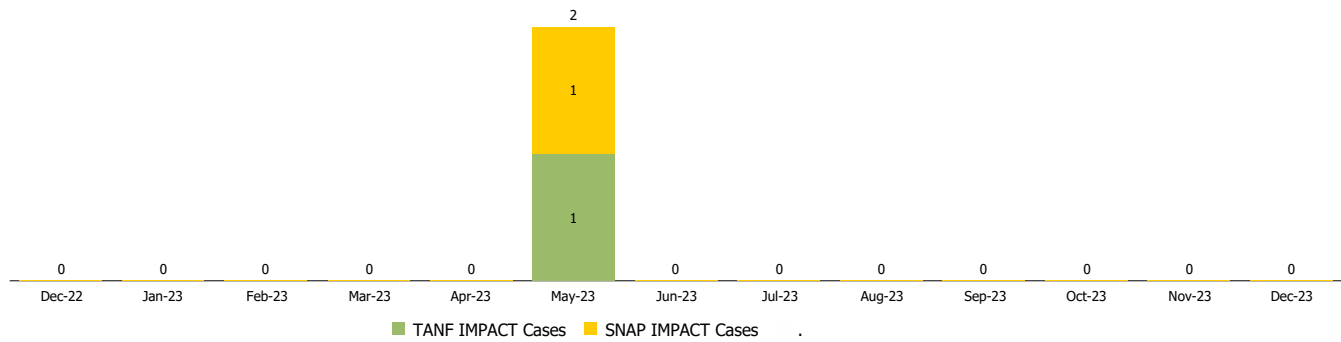
Monthly Management Report

Reporting Month: December 2023 Location: Starke County

INDIANA MANPOWER PLACEMENT AND COMPREHENSIVE TRAINING (IMPACT)

	December 2023	November 2023	December 2022	Annual Change
Number of IMPACT cases	0	0	0	
Number of TANF IMPACT adults	0	0	0	
Number of SNAP IMPACT Cases	0	0	0	
Total number of adults employed	7	3	20	-65.00%
Number of TANF IMPACT adults newly employed (within past 30 days)	0	0	0	
Number of SNAP IMPACT adults employed	7	3	20	-65.00%
Total number of adults ineligible due to employment	10	5	10	0.00%
Number of TANF adults ineligible due to employment	0	0	0	
Number of SNAP adults ineligible due to employment	10	5	10	0.00%

IMPACT Caseloads
(SNAP, TANF, Total Caseload)



Note: Effective January 2022, these numbers have been adjusted to reflect only those actually participating in IMPACT.