



DIVISION OF FAMILY RESOURCES

Shelby County Monthly Management Report October 2025

State of Indiana

Mike Braun
Governor

Family and Social Services Administration

Mitch Roob
Secretary

Division of Family Resources

Sunshine Beam
Director

For questions regarding data on this report contact:
office.Communications@fssa.IN.gov



State of Indiana

Published November 2025



DIVISION OF FAMILY RESOURCES

Monthly Management Report

Reporting Month: October 2025

Location: Shelby County

TEMPORARY ASSISTANCE FOR NEEDY FAMILIES (TANF)

Child-Only and One-Parent Families	October 2025	September 2025	October 2024	Annual Change
Number of families receiving TANF Grants	18	17	15	20.00%
Total number of grant recipients	35	31	25	40.00%
Number of adult grant recipients	4	3	5	-20.00%
Number of child grant recipients	31	28	20	55.00%
Total payments	\$6,567	\$5,990	\$5,107	28.59%
Average payment per case	\$364.83	\$352.35	\$340.47	7.16%
Average payment per recipient	\$187.63	\$193.23	\$204.28	-8.15%
Number of cases with benefits reduced to zero	1	1	1	0.00%
Number of recipients with benefits reduced to zero	1	1	1	0.00%
Number of adult recipients with benefit reduced to zero	0	0	0	0%
Number of child recipients with benefit reduced to zero	1	1	1	0.00%

Pregnancy TANF Families	October 2025	September 2025	October 2024	Annual Change
Number of families receiving TANF Grants	0	0	0	0%
Total number of grant recipients	0	0	0	0%
Total payments	\$0.00	\$0.00	\$0.00	0%
Average payment per case	\$0.00	\$0.00	\$0.00	0.00%
Average payment per recipient	\$0.00	\$0.00	\$0.00	0.00%
Number of cases with benefits reduced to zero	0	0	0	0%
Number of recipients with benefits reduced to zero	0	0	0	0%



DIVISION OF FAMILY RESOURCES

Monthly Management Report

Two-Parent Families	October 2025	September 2025	October 2024	Annual Change
Number of families receiving TANF Grants	0	0	0	0%
Total number of grant recipients	0	0	0	0%
Number of adult grant recipients	0	0	0	0%
Number of child grant recipients	0	0	0	0%
Total payments	\$0	\$0	\$0	0%
Average payment per case	\$0.00	\$0.00	\$0.00	0.00%
Average payment per recipient	\$0.00	\$0.00	\$0.00	0.00%
Number of cases with benefits reduced to zero	0	0	0	0%
Number of recipients with benefits reduced to zero	0	0	0	0%
Number of adult recipients with benefit reduced to zero	0	0	0	0%
Number of child recipients with benefit reduced to zero	0	0	0	0%

Note: The two-parent case count includes cases in which a parent living in the home is excluded from receiving TANF benefits but whose income is used in the TANF eligibility determination.



DIVISION OF FAMILY RESOURCES

Monthly Management Report

Reporting Month: October 2025

Location: Shelby County

TANF - APPLICATIONS

	October 2025	September 2025	October 2024	Annual Change
Number of Applications	33	22	28	17.86%

TANF - RECIPIENTS BY ZIP CODE

ZIP Code	Households	Recipients
46126	4	8
46144	1	1
46161	1	2
46176	11	20
47234	1	4
Total	18	35



DIVISION OF FAMILY RESOURCES

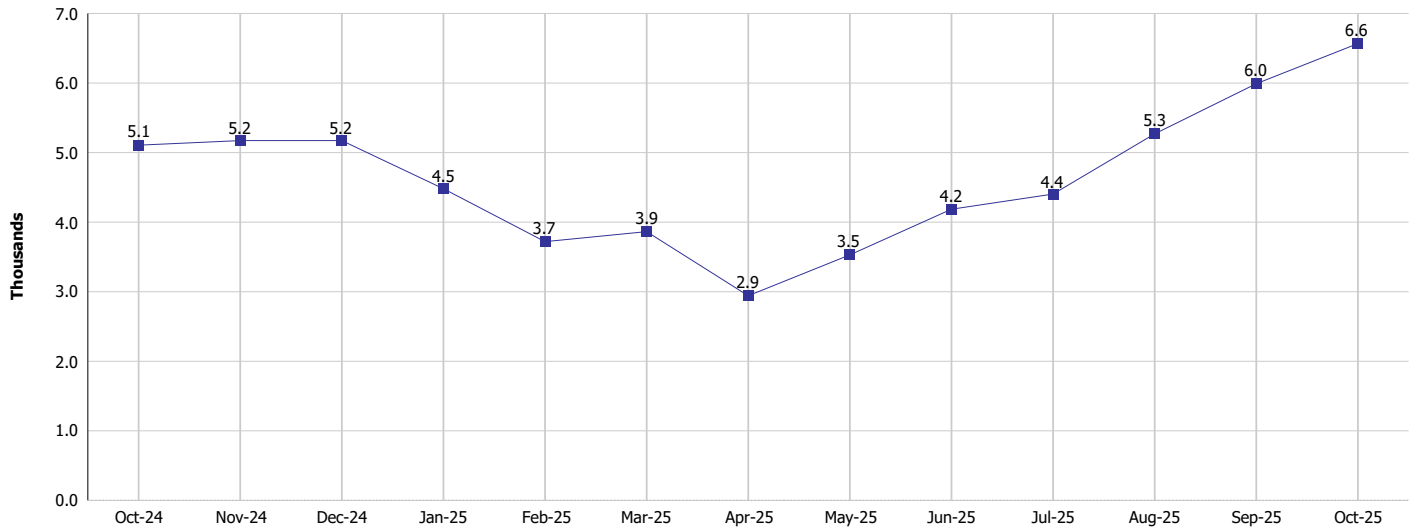
Monthly Management Report

Reporting Month: October 2025

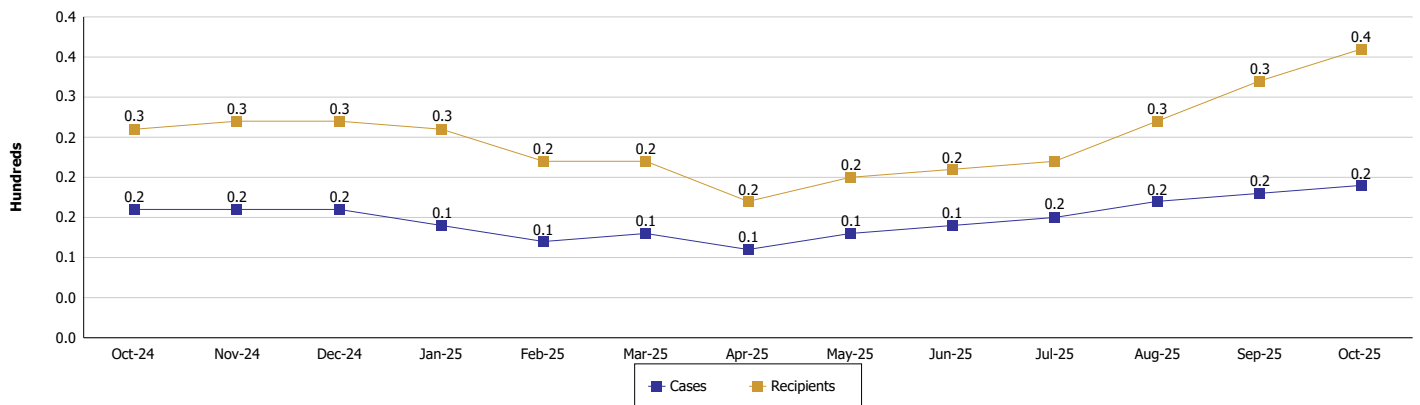
Location: Shelby County

TEMPORARY ASSISTANCE FOR NEEDY FAMILIES (TANF)

TANF Regular And TANF Two-Parent Cash Assistance



TANF Cases and Recipients
(TANF Regular and TANF Two-Parent)





DIVISION OF FAMILY RESOURCES

Monthly Management Report

Reporting Month: October 2025

Location: Shelby County

SUPPLEMENTAL NUTRITION ASSISTANCE PROGRAM (SNAP)

	October 2025	September 2025	October 2024	Annual Change
Total issuance	\$601,524	\$592,406	\$629,159	-4.39%
Number of households receiving SNAP benefits	1,558	1,567	1,612	-3.35%
Number of recipients	3,155	3,160	3,235	-2.47%
Average issuance per household	\$386.09	\$378.05	\$390.3	-1.08%
Average issuance per recipient	\$190.66	\$187.47	\$194.49	-1.97%
Number of Applications	190	181	206	-7.77%



DIVISION OF FAMILY RESOURCES

Monthly Management Report

Reporting Month: October 2025

Location: Shelby County

SNAP - RECIPIENTS BY ZIP CODE

ZIP Code	Households	Recipients
46060	1	6
46076	1	1
46104	1	11
46110	5	7
46124	30	58
46126	133	299
46130	31	65
46131	4	7
46140	2	2
46143	1	3
46144	6	20
46161	54	107
46162	8	21
46163	5	9
46176	1,171	2,331
46182	35	71
46203	1	1
46259	3	6
47234	36	71
47240	2	2
47272	24	47
47331	2	2
47374	1	5
47802	1	3
Totals	1,558	3,155



DIVISION OF FAMILY RESOURCES

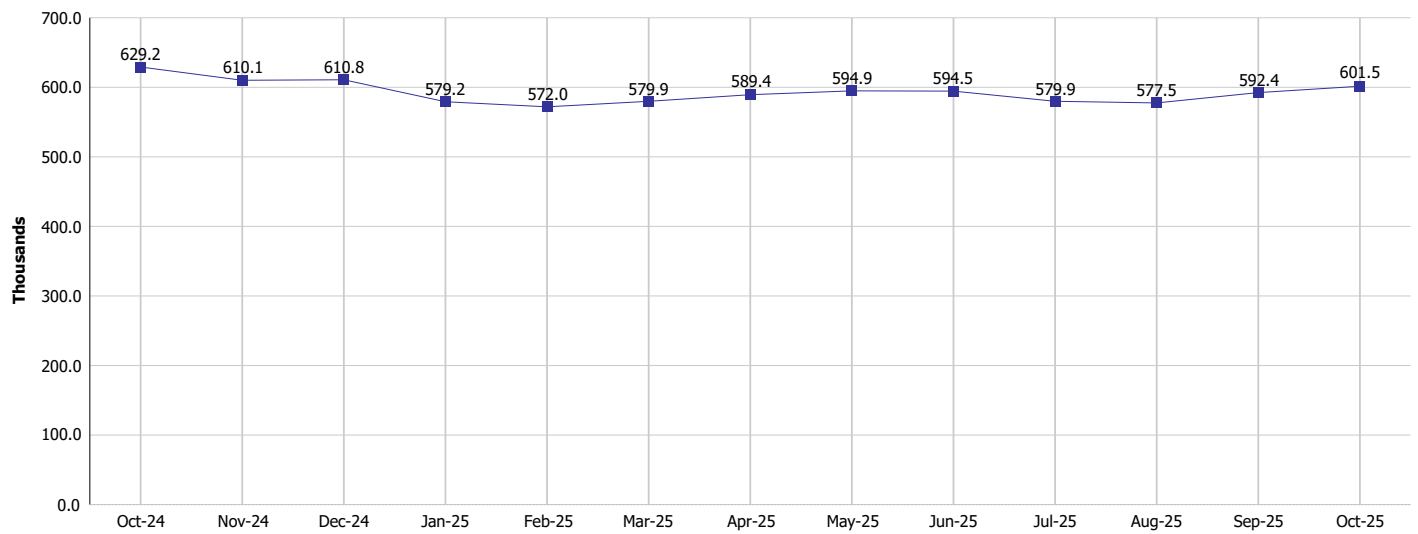
Monthly Management Report

Reporting Month: October 2025

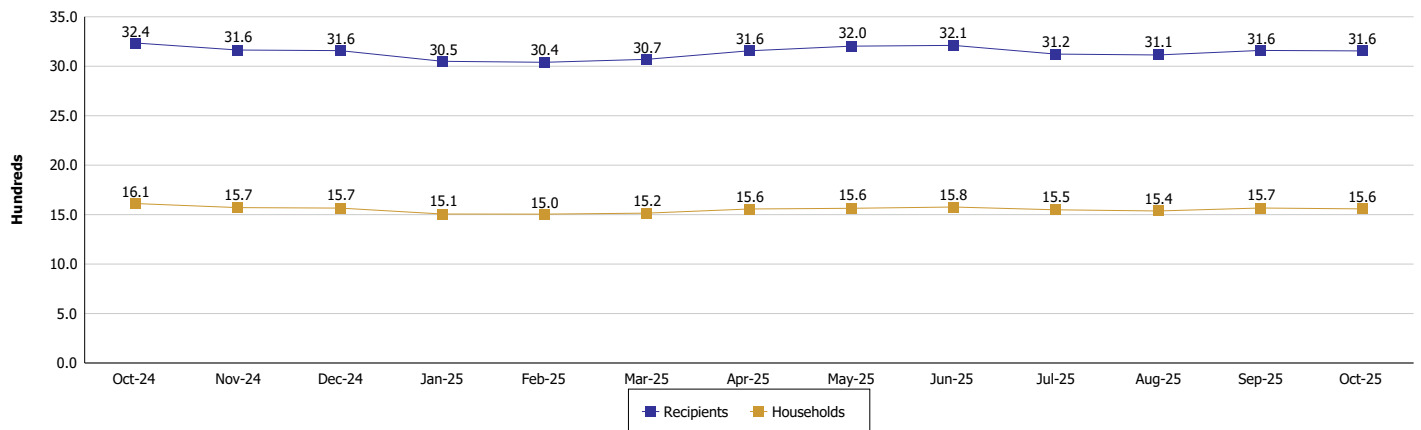
Location: Shelby County

SUPPLEMENTAL NUTRITION ASSISTANCE PROGRAM (SNAP)

SNAP Issuance



SNAP Households and Recipients





DIVISION OF FAMILY RESOURCES

Monthly Management Report

Reporting Month: October 2025

Location: Shelby County

HIP 2.0 and SNAP

	October 2025	September 2025	October 2024	Annual Change
Total HIP 2.0 Members	4,108	4,135	5,078	-19.10%
HIP Members also SNAP Recipients	1,017	1,007	1,044	-2.59%
Percentage HIP Members SNAP Recipients	24.8%	24.4%	20.6%	4.20
HIP Members SNAP ABAWDs	23	21	32	-28.12%
Percentage HIP Members SNAP ABAWDs	0.6%	0.5%	0.6%	-0.1



DIVISION OF FAMILY RESOURCES

Monthly Management Report

Reporting Month: October 2025

Location: Shelby County

INDIANA MANPOWER PLACEMENT AND COMPREHENSIVE TRAINING (IMPACT)

	October 2025	September 2025	October 2024	Annual Change
Number of IMPACT cases	0	1	0	
Number of TANF IMPACT adults	0	0	0	
Number of SNAP IMPACT Cases	0	1	0	
Total number of adults employed	3	5	3	0.00%
Number of TANF IMPACT adults newly employed (within past 30 days)	0	0	0	
Number of SNAP IMPACT adults employed	3	5	3	0.00%
Total number of adults ineligible due to employment	9	8	8	12.50%
Number of TANF adults ineligible due to employment	0	0	0	
Number of SNAP adults ineligible due to employment	9	8	8	12.50%

IMPACT Caseloads
(SNAP, TANF, Total Caseload)

