



DIVISION OF FAMILY RESOURCES

Saint Joseph County Monthly Management Report April 2024

State of Indiana

Eric Holcomb
Governor

Family and Social Services Administration

Dan Rusyniak, MD
Secretary

Division of Family Resources

Sunshine Beam
Interim Director

For questions regarding data on this report contact:
office.Communications@fssa.IN.gov



State of Indiana

Published May 2024



DIVISION OF FAMILY RESOURCES

Monthly Management Report

Reporting Month: April 2024

Location: Saint Joseph County

TEMPORARY ASSISTANCE FOR NEEDY FAMILIES (TANF)

Child-Only and One-Parent Families	April 2024	March 2024	April 2023	Annual Change
Number of families receiving TANF Grants	139	150	115	20.87%
Total number of grant recipients	301	339	221	36.20%
Number of adult grant recipients	38	45	18	111.11%
Number of child grant recipients	263	294	203	29.56%
Total payments	\$31,310	\$33,719	\$22,076	41.83%
Average payment per case	\$225.25	\$224.79	\$191.97	17.34%
Average payment per recipient	\$104.02	\$99.47	\$99.89	4.13%
Number of cases with benefits reduced to zero	2	1	3	-33.33%
Number of recipients with benefits reduced to zero	5	1	9	-44.44%
Number of adult recipients with benefit reduced to zero	1	0	0	0%
Number of child recipients with benefit reduced to zero	4	1	9	-55.56%

Two-Parent Families	April 2024	March 2024	April 2023	Annual Change
Number of families receiving TANF Grants	11	10	4	175.00%
Total number of grant recipients	45	41	15	200.00%
Number of adult grant recipients	22	20	8	175.00%
Number of child grant recipients	23	21	7	228.57%
Total payments	\$3,835	\$3,515	\$990	287.37%
Average payment per case	\$348.64	\$351.50	\$247.50	40.86%
Average payment per recipient	\$85.22	\$85.73	\$66.00	29.12%
Number of cases with benefits reduced to zero	0	0	0	0%
Number of recipients with benefits reduced to zero	0	0	0	0%
Number of adult recipients with benefit reduced to zero	0	0	0	0%
Number of child recipients with benefit reduced to zero	0	0	0	0%

Note:

For August 2021, a one time payment of \$400 per recipient was included in the Total payments and Average payments. TANF section rules changed to reflect Federal reporting logic effective September 2021. For August 2022, a one-time payment of \$269 per recipient was included in the Total payments and Average payments.

Source:



DIVISION OF FAMILY RESOURCES

Monthly Management Report

Reporting Month: April 2024

Location: Saint Joseph County

TANF - APPLICATIONS

	April 2024	March 2024	April 2023	Annual Change
Number of Applications	218	198	244	-10.66%

TANF - RECIPIENTS BY ZIP CODE

ZIP Code	Households	Recipients
46506	1	6
46536	2	3
46544	11	22
46545	10	23
46552	1	2
46561	4	14
46574	1	1
46601	9	20
46613	13	28
46614	11	22
46615	22	49
46616	6	15
46617	3	8
46619	21	48
46628	29	72
46637	6	13
Total	150	346



DIVISION OF FAMILY RESOURCES

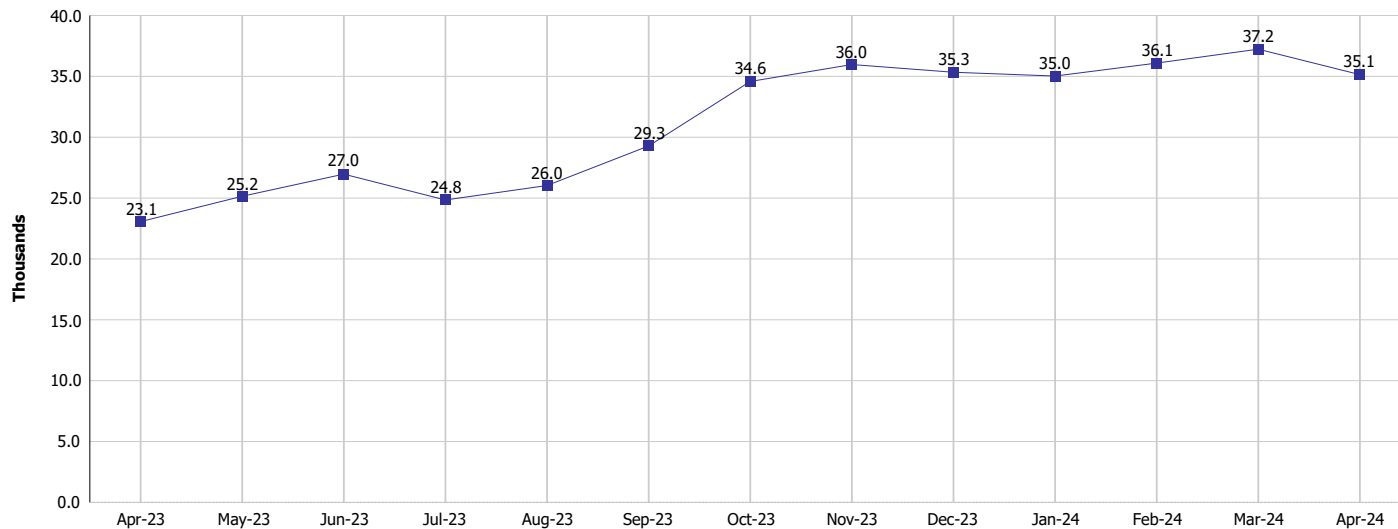
Monthly Management Report

Reporting Month: April 2024

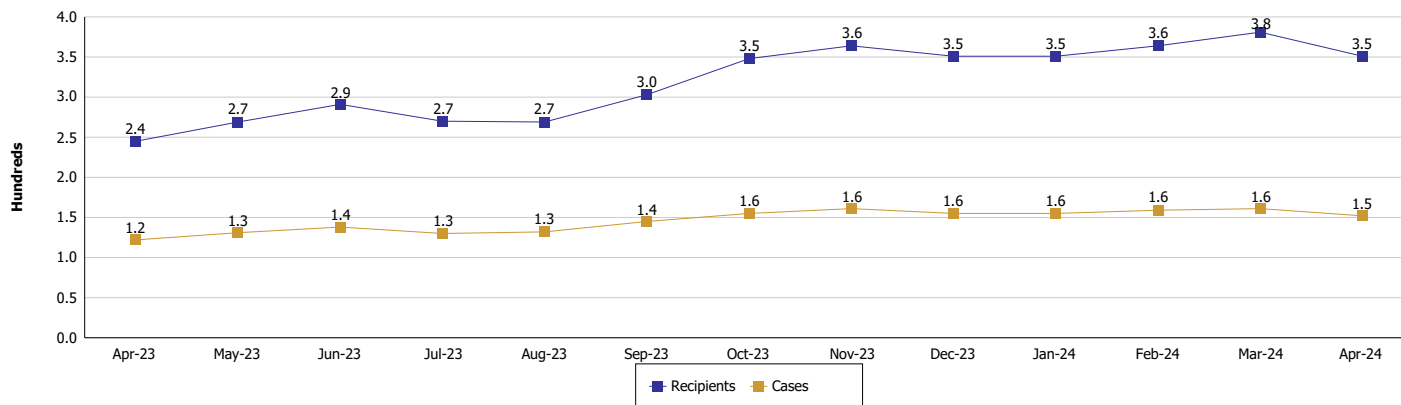
Location: Saint Joseph County

TEMPORARY ASSISTANCE FOR NEEDY FAMILIES (TANF)

TANF Regular And TANF Two-Parent Cash Assistance



TANF Cases and Recipients (TANF Regular and TANF Two-Parent)



Note:

For August 2021, a one time payment of \$400 per recipient was included in the Total payments and Average payments. TANF section rules changed to reflect Federal reporting logic effective September 2021. For August 2022, a one-time payment of \$269 per recipient was included in the Total payments and Average payments.



DIVISION OF FAMILY RESOURCES

Monthly Management Report

Reporting Month: April 2024

Location: Saint Joseph County

SUPPLEMENTAL NUTRITION ASSISTANCE PROGRAM (SNAP)

	April 2024	March 2024	April 2023	Annual Change
Total issuance	\$5,583,106	\$5,714,220	\$5,243,086	6.49%
Number of households receiving SNAP benefits	12,816	13,073	12,526	2.32%
Number of recipients	27,843	28,396	27,392	1.65%
Average issuance per household	\$435.64	\$437.1	\$418.58	4.08%
Average issuance per recipient	\$200.52	\$201.23	\$191.41	4.76%
Number of Applications	1,861	1,689	1,707	9.02%



DIVISION OF FAMILY RESOURCES

Monthly Management Report

Reporting Month: April 2024 Location: Saint Joseph County

SNAP - RECIPIENTS BY ZIP CODE

ZIP Code	Households	Recipients	ZIP Code	Households	Recipients
46218	1	1	46804	1	5
46222	1	4	46901	1	1
46228	1	1	46975	1	1
46240	1	1	46978	1	5
46256	1	1	47235	1	1
46342	1	1	47396	1	1
46350	1	1	None	12	29
46360	1	3	Totals	12,816	27,843
46408	1	2			
46506	11	39			
46514	5	15			
46516	10	19			
46517	3	16			
46526	1	2			
46528	3	3			
46530	166	379			
46536	67	127			
46540	1	1			
46544	1,568	3,346			
46545	1,124	2,313			
46546	2	2			
46552	96	222			
46554	119	311			
46556	1	1			
46561	193	439			
46563	3	8			
46573	3	5			
46574	85	174			
46595	5	14			
46601	924	1,589			
46613	1,292	2,851			
46614	1,060	2,332			
46615	1,081	2,290			
46616	452	984			
46617	337	620			
46619	1,583	3,853			
46624	8	9			
46626	1	4			
46628	1,953	4,549			
46634	3	3			
46635	185	351			
46637	438	907			
46660	3	4			
46680	1	1			
46767	1	1			
46802	1	1			



DIVISION OF FAMILY RESOURCES

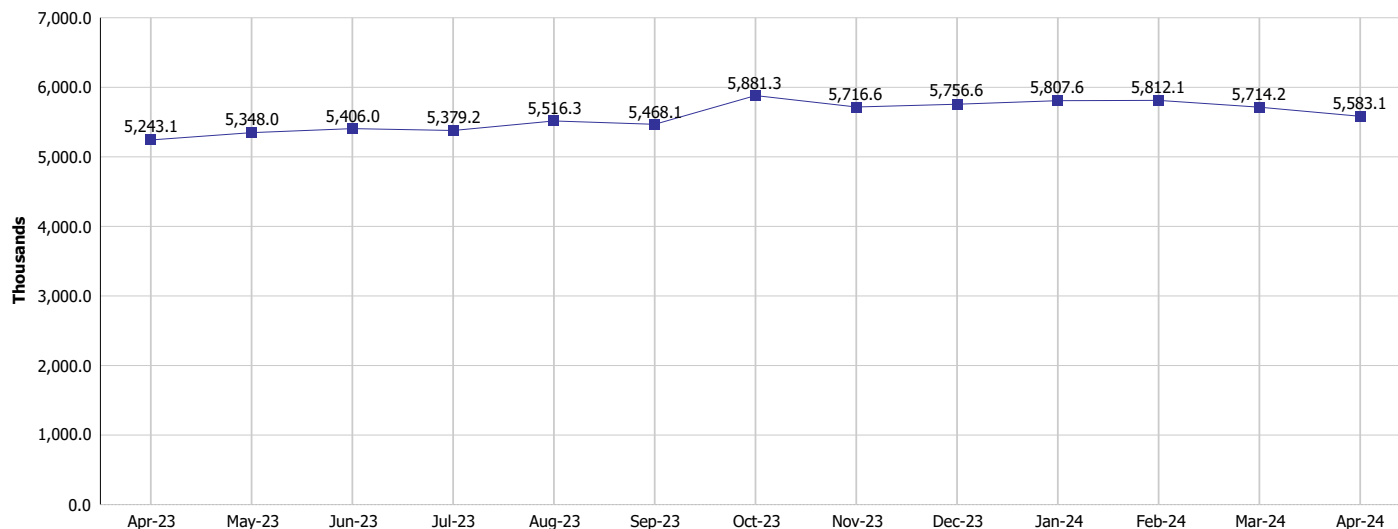
Monthly Management Report

Reporting Month: April 2024

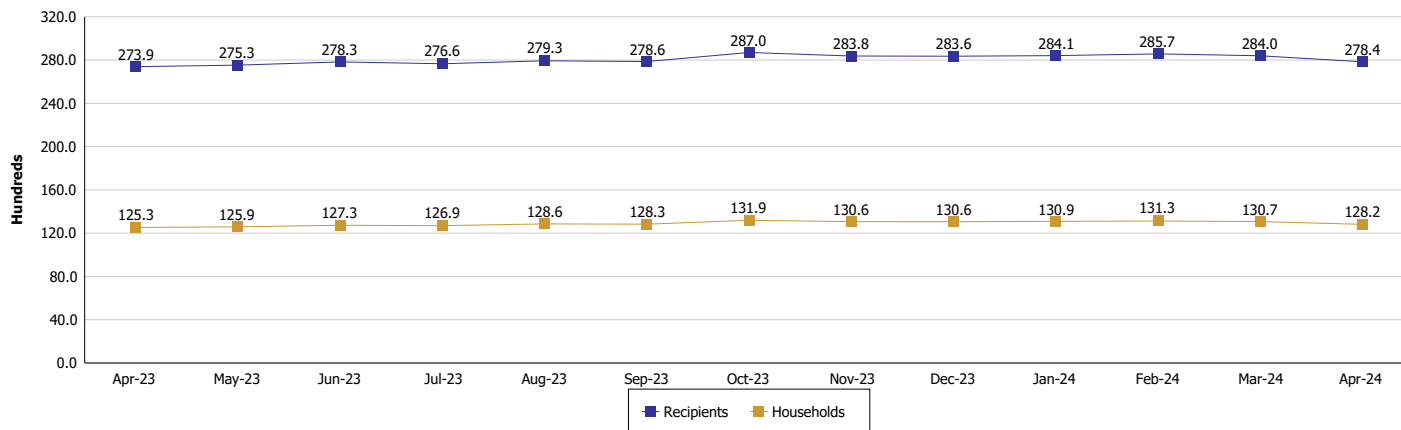
Location: Saint Joseph County

SUPPLEMENTAL NUTRITION ASSISTANCE PROGRAM (SNAP)

SNAP Issuance



SNAP Households and Recipients



Note:

Run Date: May 14, 2024



DIVISION OF FAMILY RESOURCES

Monthly Management Report

Reporting Month: April 2024

Location: Saint Joseph County

HIP 2.0 and SNAP

	April 2024	March 2024	April 2023	Annual Change
Total HIP 2.0 Members	31,370	31,736	34,302	-8.55%
HIP Members also SNAP Recipients	8,100	8,285	7,967	1.67%
Percentage HIP Members SNAP Recipients	25.8%	26.1%	23.2%	2.59
HIP Members SNAP ABAWDs	510	620	594	-14.14%
Percentage HIP Members SNAP ABAWDs	1.6%	2.0%	1.7%	-0.1



DIVISION OF FAMILY RESOURCES

Monthly Management Report

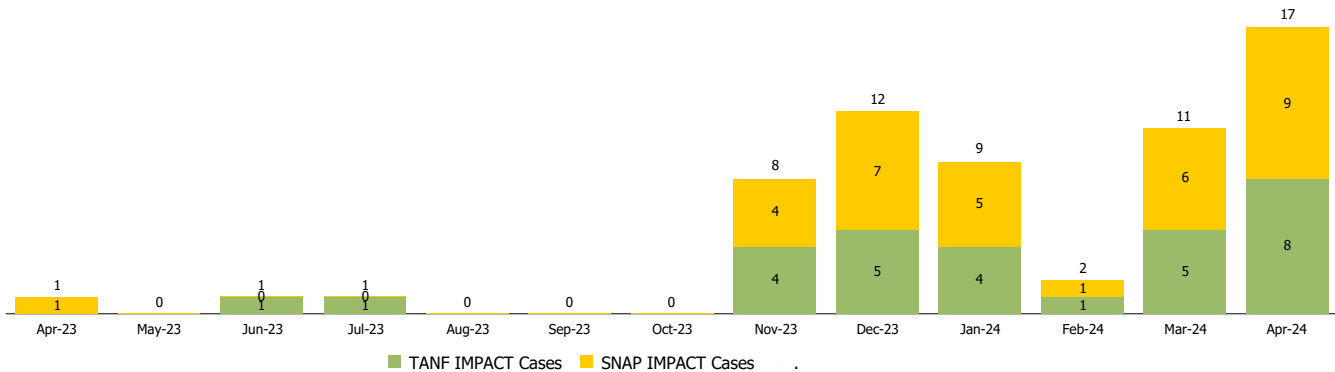
Reporting Month: April 2024

Location: Saint Joseph County

INDIANA MANPOWER PLACEMENT AND COMPREHENSIVE TRAINING (IMPACT)

	April 2024	March 2024	April 2023	Annual Change
Number of IMPACT cases	17	11	1	1,600.00%
Number of TANF IMPACT adults	8	5	0	
Number of SNAP IMPACT Cases	9	6	1	800.00%
Total number of adults employed	76	74	98	-22.45%
Number of TANF IMPACT adults newly employed (within past 30 days)	1	0	0	
Number of SNAP IMPACT adults employed	75	74	98	-23.47%
Total number of adults ineligible due to employment	80	79	134	-40.30%
Number of TANF adults ineligible due to employment	1	1	2	-50.00%
Number of SNAP adults ineligible due to employment	79	78	132	-40.15%

IMPACT Caseloads
(SNAP, TANF, Total Caseload)



Note:

Effective January 2022, these numbers have been adjusted to reflect only those actually participating in IMPACT.