



DIVISION OF FAMILY RESOURCES

Monthly Management Report September 2015

State of Indiana

Michael R. Pence
Governor

Family and Social Services Administration

John J. Wernert, M.D.
Secretary

Division of Family Resources

Adrienne Shields
Director

For questions regarding data on this report contact:
office.Communications@fssa.IN.gov



State of Indiana

Published November 2015



DIVISION OF FAMILY RESOURCES

Monthly Management Report

Reporting Month: September 2015

Location: Statewide

TEMPORARY ASSISTANCE FOR NEEDY FAMILIES (TANF)

Child-Only and One-Parent Families	September 2015	August 2015	September 2014	Annual Change
Number of families receiving TANF Grants	8,194	8,106	9,241	-11.33%
Total number of grant recipients	17,287	17,064	19,734	-12.40%
Number of adult grant recipients	2,717	2,660	3,249	-16.37%
Number of child grant recipients	14,570	14,404	16,485	-11.62%
Total payments	\$1,540,531	\$1,543,275	\$1,723,005	-10.59%
Average payment per case	\$188.01	\$190.39	\$186.45	0.83%
Average payment per recipient	\$89.11	\$90.44	\$87.31	2.07%
Number of cases with benefits reduced to zero	254	248	354	-28.25%
Number of recipients with benefits reduced to zero	573	545	774	-25.97%
Number of adult recipients with benefit reduced to zero	136	130	199	-31.66%
Number of child recipients with benefit reduced to zero	437	415	575	-24.00%

Two-Parent Families	September 2015	August 2015	September 2014	Annual Change
Number of families receiving TANF Grants	490	498	615	-20.33%
Total number of grant recipients	2,000	2,046	2,544	-21.38%
Number of adult grant recipients	743	755	946	-21.46%
Number of child grant recipients	1,257	1,291	1,598	-21.34%
Total payments	\$105,717	\$105,740	\$125,177	-15.55%
Average payment per case	\$215.75	\$212.33	\$203.54	6.00%
Average payment per recipient	\$52.86	\$51.68	\$49.20	7.43%
Number of cases with benefits reduced to zero	23	24	35	-34.29%
Number of recipients with benefits reduced to zero	91	97	135	-32.59%
Number of adult recipients with benefit reduced to zero	36	40	53	-32.08%
Number of child recipients with benefit reduced to zero	55	57	82	-32.93%

Note:

All data July 2014 and following will be broken out according to the new DFR region structure effective July 1 2014.

Source:



DIVISION OF FAMILY RESOURCES

Monthly Management Report

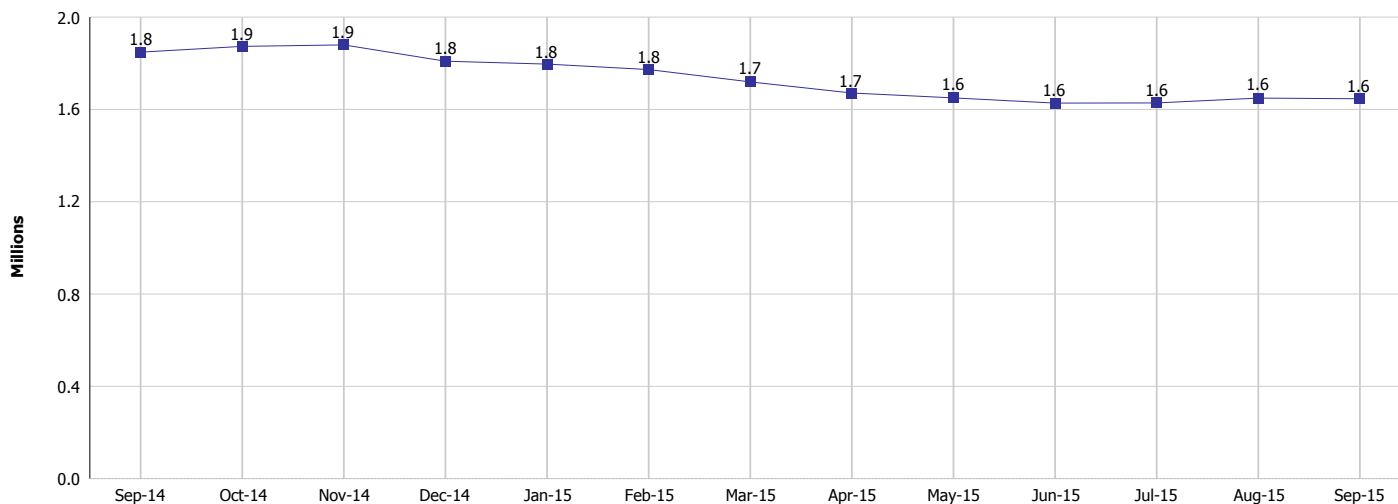
Reporting Month: September 2015

Location: Statewide

TEMPORARY ASSISTANCE FOR NEEDY FAMILIES (TANF)

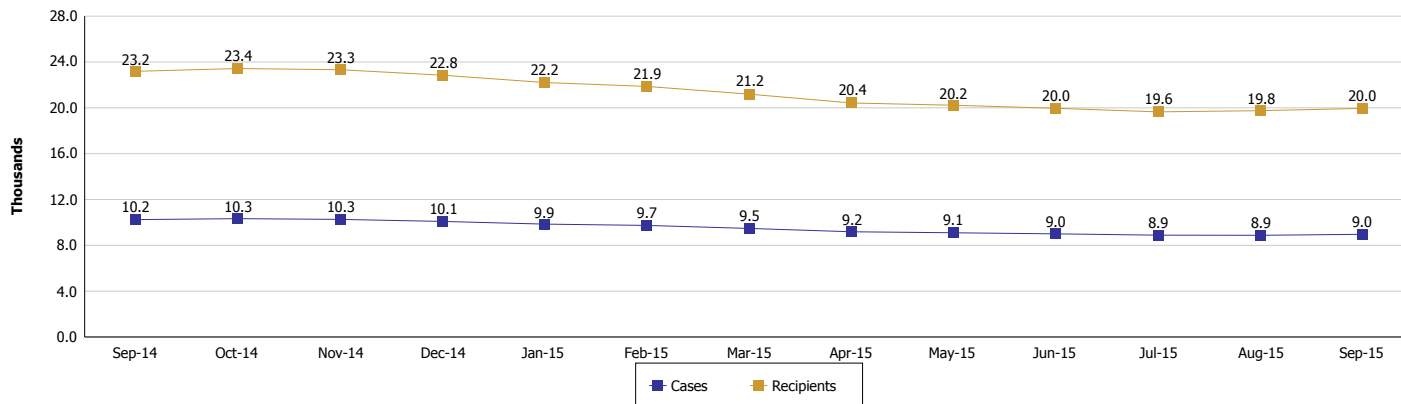
TANF Cash Assistance

(TANF Regular and TANF Two-Parent)



TANF Cases and Recipients

(TANF Regular and TANF Two-Parent)



Note:

All data July 2014 and following will be broken out according to the new DFR region structure effective July 1 2014.



DIVISION OF FAMILY RESOURCES

Monthly Management Report

Reporting Month: September 2015

Location: Statewide

SUPPLEMENTAL NUTRITION ASSISTANCE PROGRAM (SNAP)

	September 2015	August 2015	September 2014	Annual Change
Total issuance	\$99,718,657	\$100,681,503	\$106,825,664	-6.65%
Number of households receiving SNAP benefits	364,661	368,123	396,205	-7.96%
Number of recipients	803,254	808,144	871,454	-7.83%
Average issuance per household	\$273.46	\$273.50	\$269.62	1.42%
Average issuance per recipient	\$124.14	\$124.58	\$122.58	1.27%

Note:

All data July 2014 and following will be broken out according to the new DFR region structure effective July 1 2014.

SNAP ERROR RATES

	May 2015	April 2015	March 2015	Cumulative FFY 2014
FFY Cumulative Positive Error Rate	5.31%	5.19%	5.52%	4.47%
Monthly Positive Error Rate	6.01%	2.86%	3.57%	NA
FFY Cumulative Negative Error Rate	16.84%	16.31%	15.47%	23.14%
Monthly Negative Error Rate	20.69%	21.82%	18.57%	NA

Note:

All data July 2014 and following will be broken out according to the new DFR region structure effective July 1 2014.

Notes:

Reporting periods for SNAP Error Rates reflect the review period and Federal submission deadline. The month reported above is the month in which an action was taken included in the review sample.

Positive actions are those which produced an issuance of benefits to a household. Negative actions are those which closed or denied benefits to a household.

Error Rate data is reported by the state before the federal agency has accepted and finalized the results. This rate is subject to revision based upon: completion and submission of outstanding reviews; final review corrections; and completion of previously dropped reviews. Monthly numbers are taken from end-of-month totals. The error status of cases may be changed by the State or Federal Review process, which would cause a change that might not be reflected in the previous monthly numbers.



DIVISION OF FAMILY RESOURCES

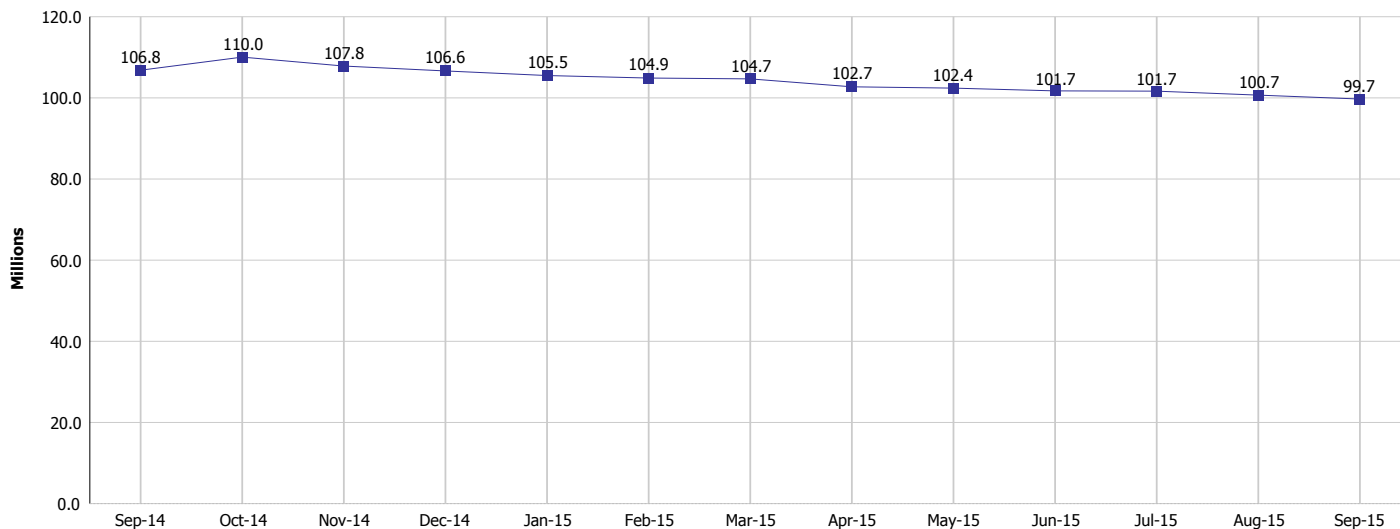
Monthly Management Report

Reporting Month: September 2015

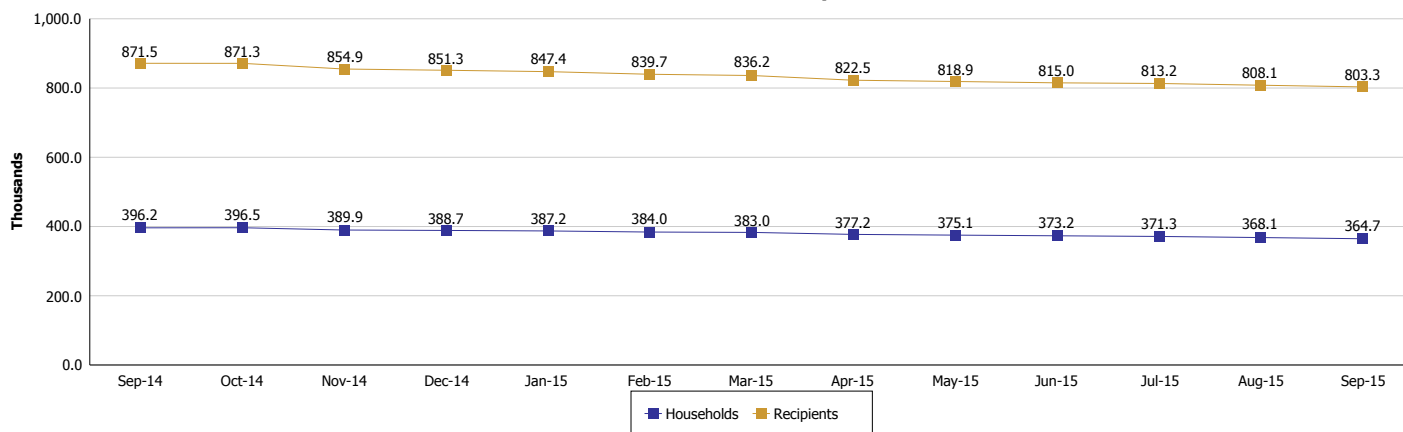
Location: Statewide

SUPPLEMENTAL NUTRITION ASSISTANCE PROGRAM (SNAP)

SNAP Issuance



SNAP Households and Recipients



Note:

All data July 2014 and following will be broken out according to the new DFR region structure effective July 1 2014.



DIVISION OF FAMILY RESOURCES

Monthly Management Report

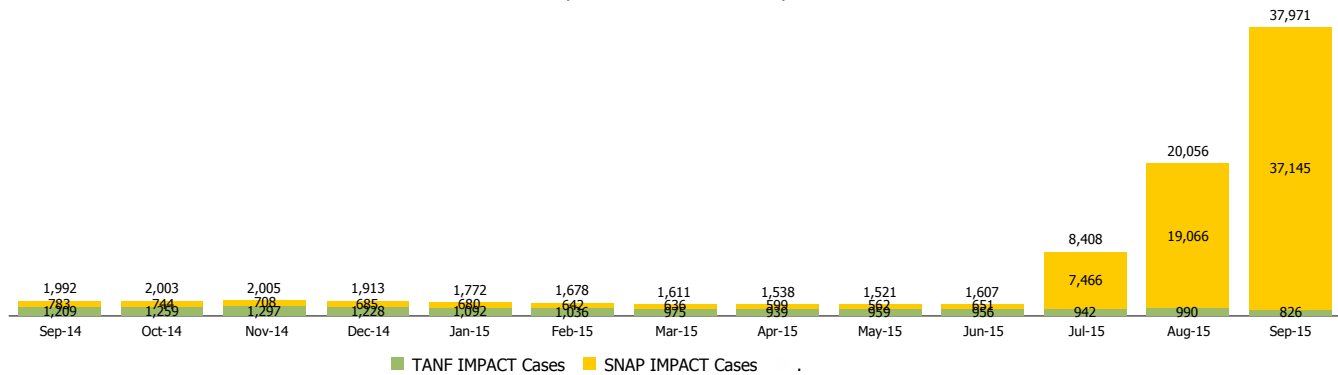
Reporting Month: September 2015

Location: Statewide

INDIANA MANPOWER PLACEMENT AND COMPREHENSIVE TRAINING (IMPACT)

	September 2015	August 2015	September 2014	Annual Change
Number of IMPACT cases	37,971	20,056	1,992	1,806.17%
Number of TANF IMPACT adults	826	990	1,209	-31.68%
Number of SNAP IMPACT Cases	37,145	19,066	783	4,643.93%
Total number of adults employed	3,039	1,372	256	1,087.11%
Number of TANF IMPACT adults newly employed (within past 30 days)	149	128	142	4.93%
Number of SNAP IMPACT adults employed	2,890	1,244	114	2,435.09%
Total number of adults ineligible due to employment	7,186	6,985	2,555	181.25%
Number of TANF adults ineligible due to employment	11	24	30	-63.33%
Number of SNAP adults ineligible due to employment	7,175	6,961	2,525	184.16%

IMPACT Caseloads
(SNAP, TANF, Total Caseload)



Note:

All data July 2014 and following will be broken out according to the new DFR region structure effective July 1 2014.