



DIVISION OF FAMILY RESOURCES

Monthly Management Report October 2016

State of Indiana

Michael R. Pence
Governor

Family and Social Services Administration

John J. Wernert, M.D.
Secretary

Division of Family Resources

Adrienne Shields
Director

For questions regarding data on this report contact:
office.Communications@fssa.IN.gov



State of Indiana

Published November 2016



DIVISION OF FAMILY RESOURCES

Monthly Management Report

Reporting Month: October 2016

Location: Statewide

TEMPORARY ASSISTANCE FOR NEEDY FAMILIES (TANF)

Child-Only and One-Parent Families	October 2016	September 2016	October 2015	Annual Change
Number of families receiving TANF Grants	7,471	7,397	8,293	-9.91%
Total number of grant recipients	15,599	15,338	17,596	-11.35%
Number of adult grant recipients	2,315	2,261	2,807	-17.53%
Number of child grant recipients	13,284	13,077	14,789	-10.18%
Total payments	\$1,435,452	\$1,401,293	\$1,572,060	-8.69%
Average payment per case	\$192.14	\$189.44	\$189.56	1.36%
Average payment per recipient	\$92.02	\$91.36	\$89.34	3.00%
Number of cases with benefits reduced to zero	196	170	229	-14.41%
Number of recipients with benefits reduced to zero	421	362	498	-15.46%
Number of adult recipients with benefit reduced to zero	97	88	113	-14.16%
Number of child recipients with benefit reduced to zero	324	274	385	-15.84%

Two-Parent Families	October 2016	September 2016	October 2015	Annual Change
Number of families receiving TANF Grants	454	439	532	-14.66%
Total number of grant recipients	1,895	1,819	2,144	-11.61%
Number of adult grant recipients	721	692	820	-12.07%
Number of child grant recipients	1,174	1,127	1,324	-11.33%
Total payments	\$111,444	\$103,782	\$117,130	-4.85%
Average payment per case	\$245.47	\$236.41	\$220.17	11.49%
Average payment per recipient	\$58.81	\$57.05	\$54.63	7.65%
Number of cases with benefits reduced to zero	22	16	21	4.76%
Number of recipients with benefits reduced to zero	80	50	86	-6.98%
Number of adult recipients with benefit reduced to zero	32	22	36	-11.11%
Number of child recipients with benefit reduced to zero	48	28	50	-4.00%

Note:

All data July 2014 and following will be broken out according to the new DFR region structure effective July 1 2014.

Source:



DIVISION OF FAMILY RESOURCES

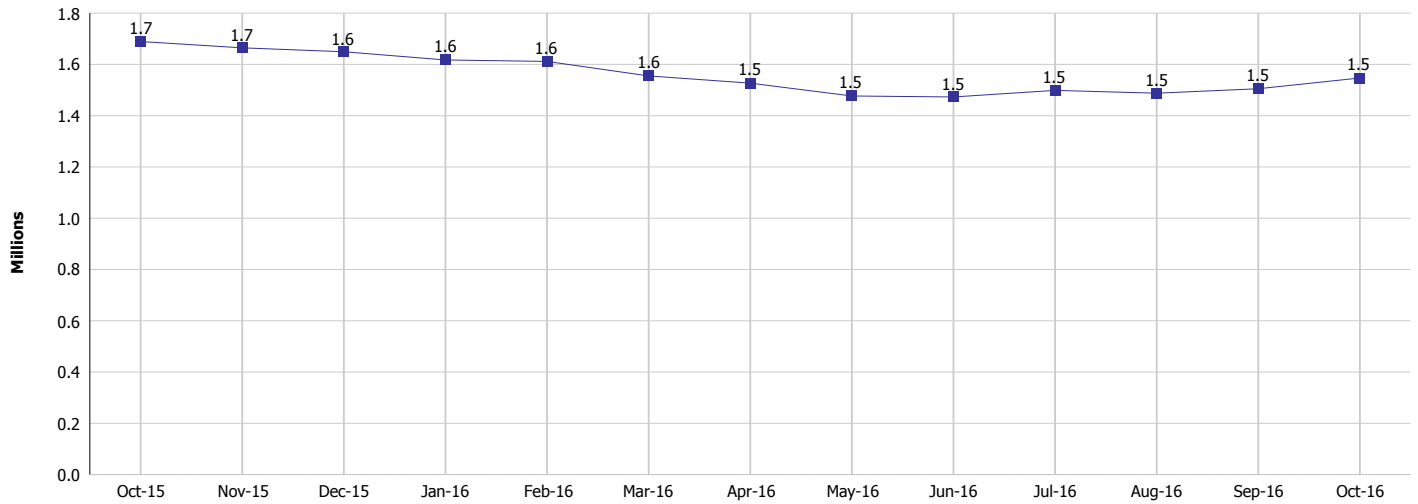
Monthly Management Report

Reporting Month: October 2016

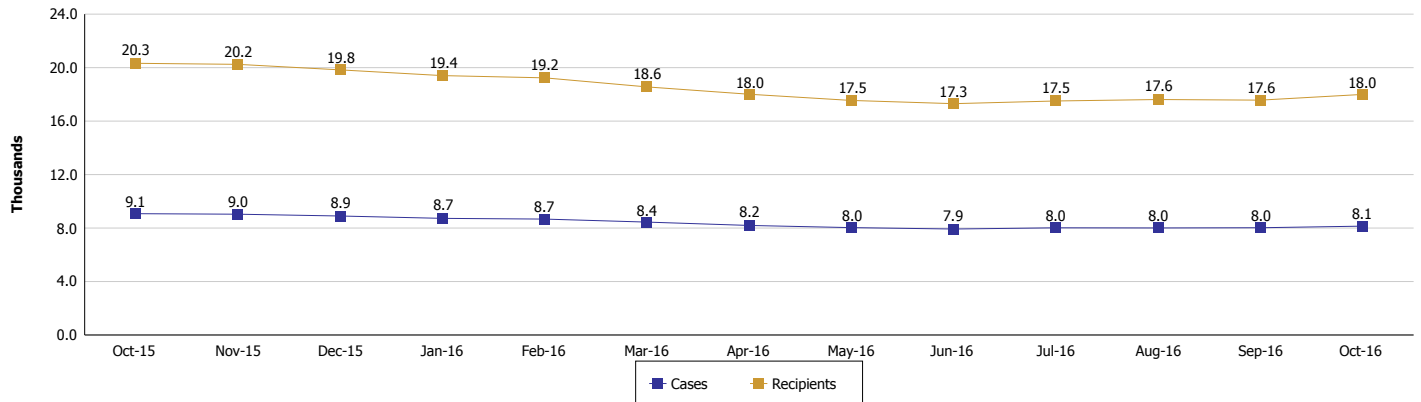
Location: Statewide

TEMPORARY ASSISTANCE FOR NEEDY FAMILIES (TANF)

TANF Cash Assistance
(TANF Regular and TANF Two-Parent)



TANF Cases and Recipients
(TANF Regular and TANF Two-Parent)



Note:

All data July 2014 and following will be broken out according to the new DFR region structure effective July 1 2014.



DIVISION OF FAMILY RESOURCES

Monthly Management Report

Reporting Month: October 2016

Location: Statewide

SUPPLEMENTAL NUTRITION ASSISTANCE PROGRAM (SNAP)

	October 2016	September 2016	October 2015	Annual Change
Total issuance	\$84,380,438	\$84,652,673	\$98,944,594	-14.72%
Number of households receiving SNAP benefits	312,191	313,081	362,348	-13.84%
Number of recipients	708,553	710,786	799,797	-11.41%
Average issuance per household	\$270.28	\$270.39	\$273.07	-1.02%
Average issuance per recipient	\$119.09	\$119.10	\$123.71	-3.74%

Note:

All data July 2014 and following will be broken out according to the new DFR region structure effective July 1 2014.

SNAP ERROR RATES

	June 2016	May 2016	April 2016	Cumulative FFY 2015
FFY Cumulative Positive Error Rate	6.65%	7.33%	7.31%	5.78%
Monthly Positive Error Rate	1.23%	7.45%	12.38%	NA
FFY Cumulative Negative Error Rate	25.04%	26.12%	25.27%	18.13%
Monthly Negative Error Rate	16.67%	32.76%	25.40%	NA

Note:

All data July 2014 and following will be broken out according to the new DFR region structure effective July 1 2014.

Notes:

Reporting periods for SNAP Error Rates reflect the review period and Federal submission deadline. The month reported above is the month in which an action was taken included in the review sample.

Positive actions are those which produced an issuance of benefits to a household. Negative actions are those which closed or denied benefits to a household.

Error Rate data is reported by the state before the federal agency has accepted and finalized the results. This rate is subject to revision based upon: completion and submission of outstanding reviews; final review corrections; and completion of previously dropped reviews. Monthly numbers are taken from end-of-month totals. The error status of cases may be changed by the State or Federal Review process, which would cause a change that might not be reflected in the previous monthly numbers.



DIVISION OF FAMILY RESOURCES

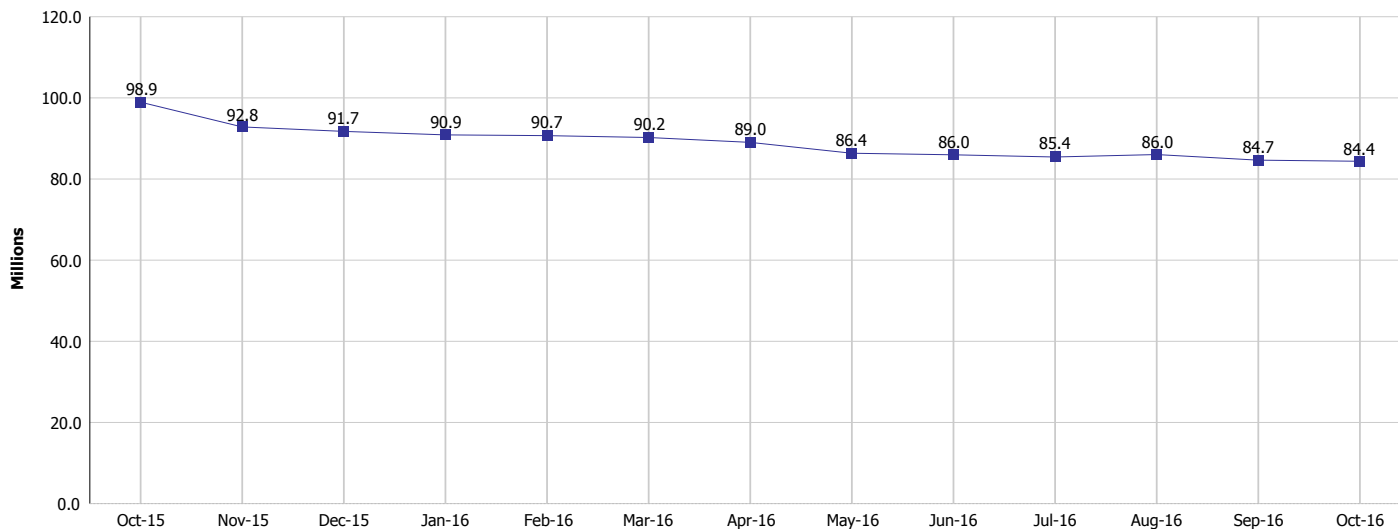
Monthly Management Report

Reporting Month: October 2016

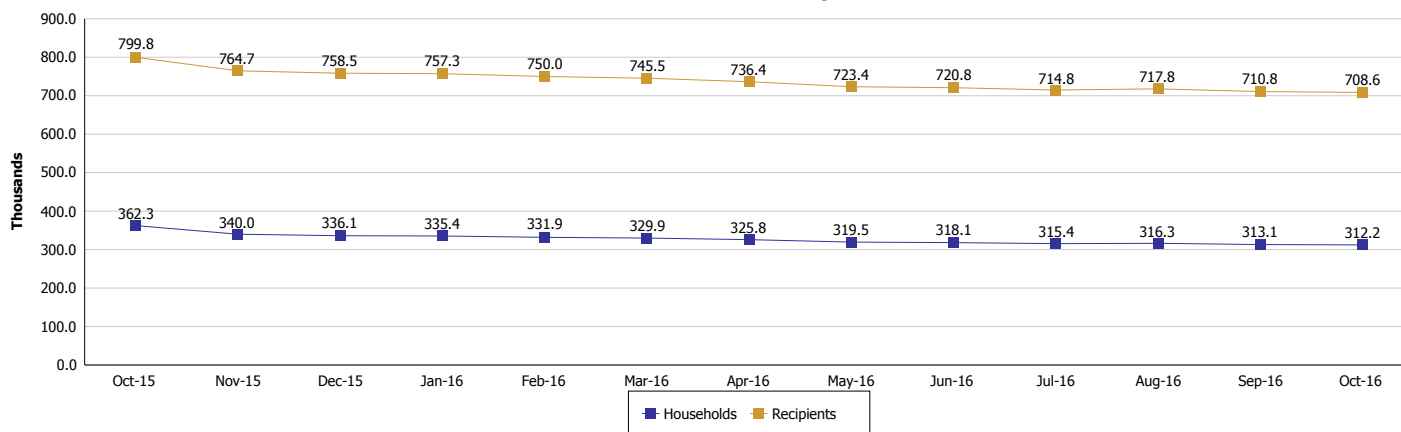
Location: Statewide

SUPPLEMENTAL NUTRITION ASSISTANCE PROGRAM (SNAP)

SNAP Issuance



SNAP Households and Recipients



Note:

All data July 2014 and following will be broken out according to the new DFR region structure effective July 1 2014.



DIVISION OF FAMILY RESOURCES

Monthly Management Report

Reporting Month: October 2016

Location: Statewide

HIP 2.0 and SNAP

	October 2016	September 2016	October 2015	Annual Change
Total HIP 2.0 Members	426,377	416,659	348,315	22.41%
HIP Members also SNAP Recipients	164,774	163,691	175,543	-6.13%
Percentage HIP Members SNAP Recipients	38.6%	39.3%	50.4%	12.02%
HIP Members SNAP ABAWDs	5,524	5,518	8,779	-37.08%
Percentage HIP Members SNAP ABAWDs	1.3%	1.3%	2.5%	12.02%

Note:

All data July 2014 and following will be broken out according to the new DFR region structure effective July 1 2014.



DIVISION OF FAMILY RESOURCES

Monthly Management Report

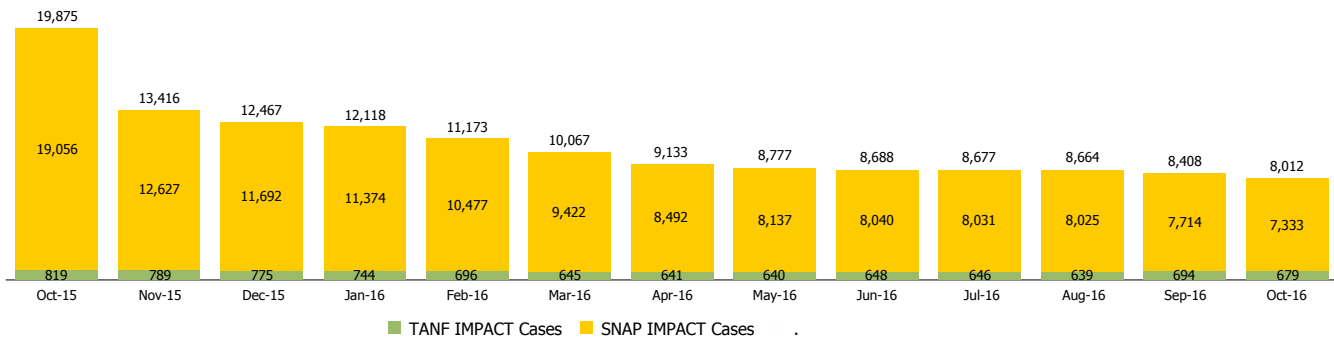
Reporting Month: October 2016

Location: Statewide

INDIANA MANPOWER PLACEMENT AND COMPREHENSIVE TRAINING (IMPACT)

	October 2016	September 2016	October 2015	Annual Change
Number of IMPACT cases	8,012	8,408	19,875	-59.69%
Number of TANF IMPACT adults	679	694	819	-17.09%
Number of SNAP IMPACT Cases	7,333	7,714	19,056	-61.52%
Total number of adults employed	1,534	1,559	2,771	-44.64%
Number of TANF IMPACT adults newly employed (within past 30 days)	142	120	173	-17.92%
Number of SNAP IMPACT adults employed	1,392	1,439	2,598	-46.42%
Total number of adults ineligible due to employment	5,982	7,065	7,293	-17.98%
Number of TANF adults ineligible due to employment	16	26	18	-11.11%
Number of SNAP adults ineligible due to employment	5,966	7,039	7,275	-17.99%

IMPACT Caseloads
(SNAP, TANF, Total Caseload)



Note:

All data July 2014 and following will be broken out according to the new DFR region structure effective July 1 2014.