



DIVISION OF FAMILY RESOURCES

Monthly Management Report November 2017

State of Indiana

Eric Holcomb
Governor

Family and Social Services Administration

Jennifer Walthall, M.D.
Secretary

Division of Family Resources

Adrienne Shields
Director

For questions regarding data on this report contact:
office.Communications@fssa.IN.gov



State of Indiana

Published December 2017



DIVISION OF FAMILY RESOURCES

Monthly Management Report

Reporting Month: November 2017

Location: Statewide

TEMPORARY ASSISTANCE FOR NEEDY FAMILIES (TANF)

Child-Only and One-Parent Families	Nov 30, 2017	October 2017	November 2016	Annual Change
Number of families receiving TANF Grants	6,692	6,638	7,530	-11.13%
Total number of grant recipients	14,140	13,925	15,749	-10.22%
Number of adult grant recipients	2,082	1,984	2,352	-11.48%
Number of child grant recipients	12,058	11,941	13,397	-9.99%
Total payments	\$1,330,818	\$1,287,267	\$1,451,846	-8.34%
Average payment per case	\$198.87	\$193.92	\$192.81	3.14%
Average payment per recipient	\$94.12	\$92.44	\$92.19	2.09%
Number of cases with benefits reduced to zero	109	106	166	-34.34%
Number of recipients with benefits reduced to zero	220	222	371	-40.70%
Number of adult recipients with benefit reduced to zero	52	52	88	-40.91%
Number of child recipients with benefit reduced to zero	168	170	283	-40.64%

Two-Parent Families	Nov 30, 2017	October 2017	November 2016	Annual Change
Number of families receiving TANF Grants	304	314	466	-34.76%
Total number of grant recipients	1,212	1,279	1,988	-39.03%
Number of adult grant recipients	429	452	748	-42.65%
Number of child grant recipients	783	827	1,240	-36.85%
Total payments	\$64,431	\$65,198	\$116,994	-44.93%
Average payment per case	\$211.94	\$207.64	\$251.06	-15.58%
Average payment per recipient	\$53.16	\$50.98	\$58.85	-9.67%
Number of cases with benefits reduced to zero	3	5	19	-84.21%
Number of recipients with benefits reduced to zero	11	19	69	-84.06%
Number of adult recipients with benefit reduced to zero	4	8	30	-86.67%
Number of child recipients with benefit reduced to zero	7	11	39	-82.05%

Note:

All data July 2014 and following will be broken out according to the new DFR region structure effective July 1 2014.

Source:



DIVISION OF FAMILY RESOURCES

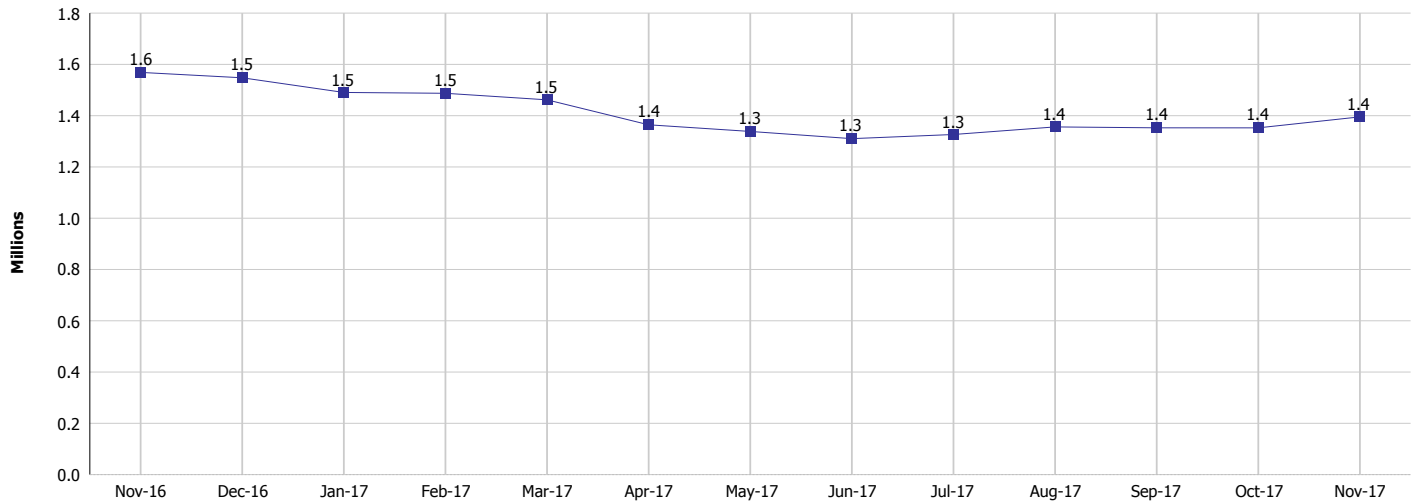
Monthly Management Report

Reporting Month: November 2017

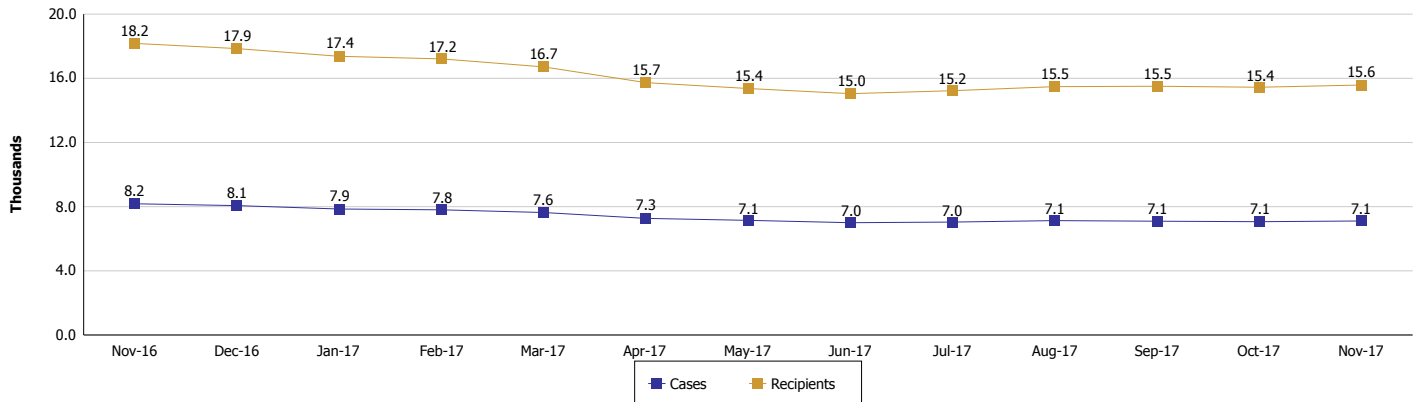
Location: Statewide

TEMPORARY ASSISTANCE FOR NEEDY FAMILIES (TANF)

TANF Cash Assistance
(TANF Regular and TANF Two-Parent)



TANF Cases and Recipients
(TANF Regular and TANF Two-Parent)



Note:

All data July 2014 and following will be broken out according to the new DFR region structure effective July 1 2014.



DIVISION OF FAMILY RESOURCES

Monthly Management Report

Reporting Month: November 2017

Location: Statewide

SUPPLEMENTAL NUTRITION ASSISTANCE PROGRAM (SNAP)

	November 2017	October 2017	November 2016	Annual Change
Total issuance	\$74,607,103	\$75,738,875	\$82,599,742	-9.68%
Number of households receiving SNAP benefits	282,828	285,419	307,756	-8.10%
Number of recipients	636,497	642,392	697,678	-8.77%
Average issuance per household	\$263.79	\$265.36	\$268.39	-1.72%
Average issuance per recipient	\$117.22	\$117.90	\$118.39	-0.99%

Note:

All data July 2014 and following will be broken out according to the new DFR region structure effective July 1 2014.

SNAP ERROR RATES

	July 2017	June 2017	May 2017	Cumulative FFY 2016
FFY Cumulative Positive Error Rate	8.85%	9.17%	9.20%	6.94%
Monthly Positive Error Rate	5.75%	8.83%	14.03%	NA
FFY Cumulative Negative Error Rate	31.29%	31.02%	31.01%	27.12%
Monthly Negative Error Rate	33.93%	31.03%	29.31%	NA

Note:

All data July 2014 and following will be broken out according to the new DFR region structure effective July 1 2014.

Notes:

Reporting periods for SNAP Error Rates reflect the review period and Federal submission deadline. The month reported above is the month in which an action was taken included in the review sample.

Positive actions are those which produced an issuance of benefits to a household. Negative actions are those which closed or denied benefits to a household.

Error Rate data is reported by the state before the federal agency has accepted and finalized the results. This rate is subject to revision based upon: completion and submission of outstanding reviews; final review corrections; and completion of previously dropped reviews. Monthly numbers are taken from end-of-month totals. The error status of cases may be changed by the State or Federal Review process, which would cause a change that might not be reflected in the previous monthly numbers.



DIVISION OF FAMILY RESOURCES

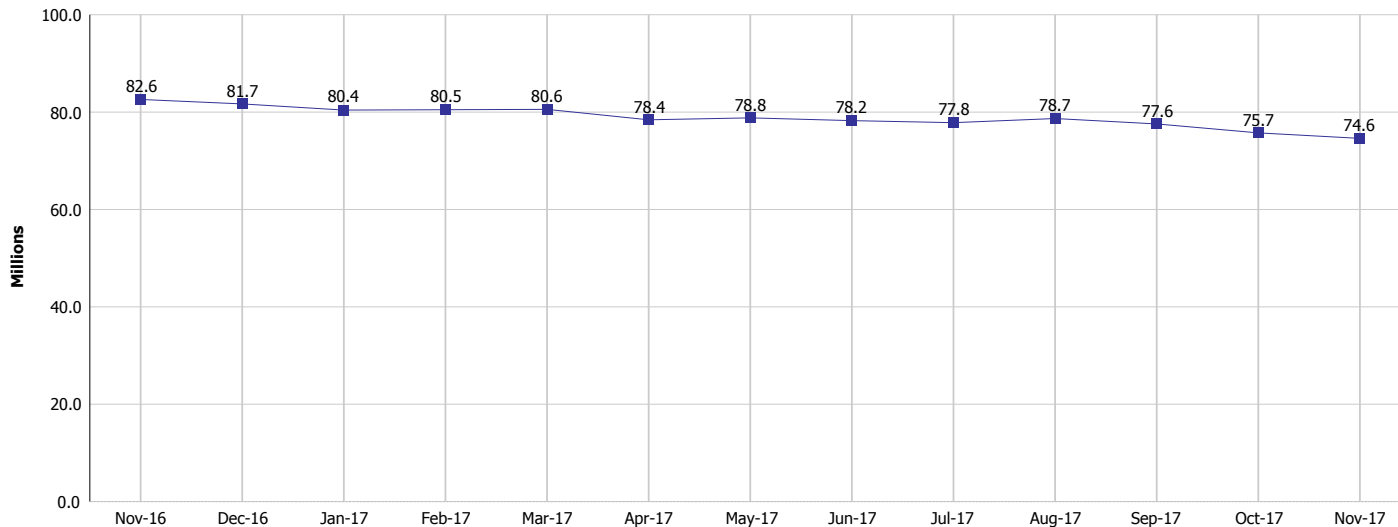
Monthly Management Report

Reporting Month: November 2017

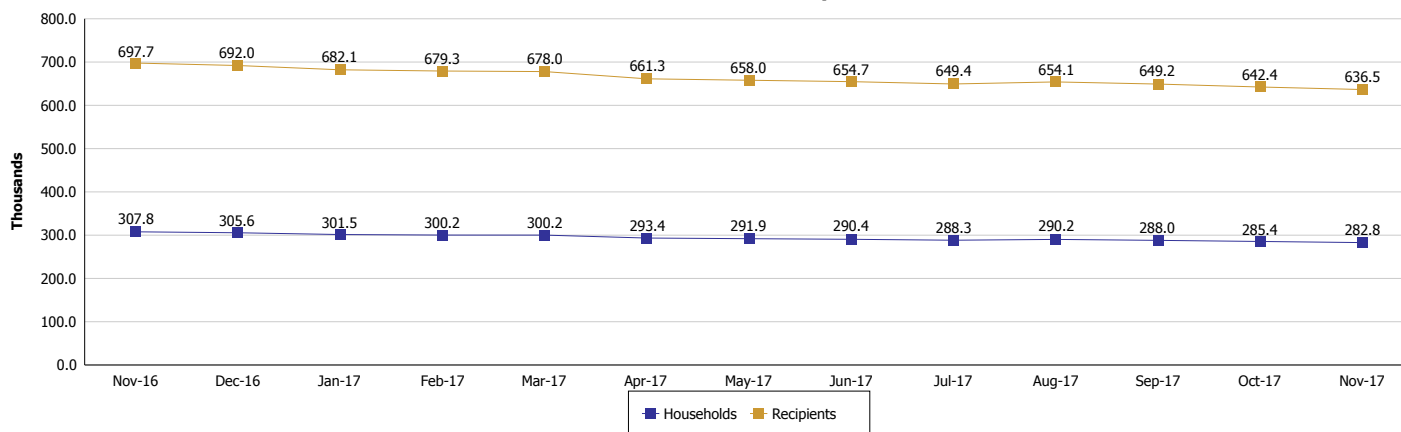
Location: Statewide

SUPPLEMENTAL NUTRITION ASSISTANCE PROGRAM (SNAP)

SNAP Issuance



SNAP Households and Recipients



Note:

All data July 2014 and following will be broken out according to the new DFR region structure effective July 1 2014.



DIVISION OF FAMILY RESOURCES

Monthly Management Report

Reporting Month: November 2017

Location: Statewide

HIP 2.0 and SNAP

	November 2017	October 2017	November 2016	Annual Change
Total HIP 2.0 Members	448,205	448,376	427,557	4.83%
HIP Members also SNAP Recipients	149,748	151,161	162,001	-7.56%
Percentage HIP Members SNAP Recipients	33.4%	33.7%	37.9%	1.21%
HIP Members SNAP ABAWDs	4,077	4,224	5,292	-22.96%
Percentage HIP Members SNAP ABAWDs	0.9%	0.9%	1.2%	1.21%

Note:

All data July 2014 and following will be broken out according to the new DFR region structure effective July 1 2014.



DIVISION OF FAMILY RESOURCES

Monthly Management Report

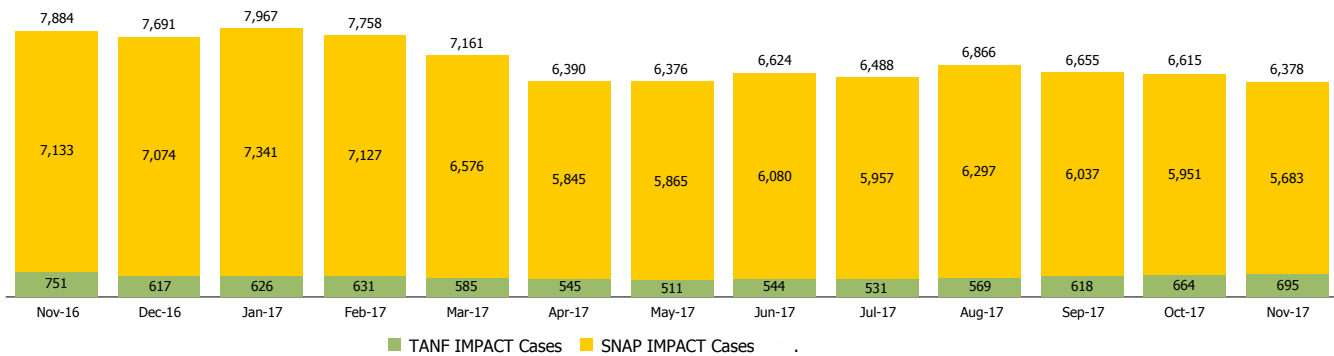
Reporting Month: November 2017

Location: Statewide

INDIANA MANPOWER PLACEMENT AND COMPREHENSIVE TRAINING (IMPACT)

	November 2017	October 2017	November 2016	Annual Change
Number of IMPACT cases	6,378	6,615	7,884	-19.10%
Number of TANF IMPACT adults	695	664	751	-7.46%
Number of SNAP IMPACT Cases	5,683	5,951	7,133	-20.33%
Total number of adults employed	1,136	3,310	1,307	-13.08%
Number of TANF IMPACT adults newly employed (within past 30 days)	121	284	109	11.01%
Number of SNAP IMPACT adults employed	1,015	3,026	1,198	-15.28%
Total number of adults ineligible due to employment	6,233	6,756	6,943	-10.23%
Number of TANF adults ineligible due to employment	17	16	23	-26.09%
Number of SNAP adults ineligible due to employment	6,216	6,740	6,920	-10.17%

IMPACT Caseloads
(SNAP, TANF, Total Caseload)



Note:

All data July 2014 and following will be broken out according to the new DFR region structure effective July 1 2014.