



DIVISION OF FAMILY RESOURCES

Monthly Management Report March 2015

State of Indiana

Michael R. Pence
Governor

Family and Social Services Administration

John J. Wernert, M.D.
Secretary

Division of Family Resources

Adrienne Shields
Director

For questions regarding data on this report contact:
office.Communications@fssa.IN.gov



State of Indiana

Published April 2015



DIVISION OF FAMILY RESOURCES

Monthly Management Report

Reporting Month: March 2015

Location: Statewide

TEMPORARY ASSISTANCE FOR NEEDY FAMILIES (TANF)

Child-Only and One-Parent Families	March 2015	February 2015	March 2014	Annual Change
Number of families receiving TANF Grants	8,548	8,777	9,901	-13.67%
Total number of grant recipients	17,910	18,518	21,266	-15.78%
Number of adult grant recipients	2,849	2,939	3,720	-23.41%
Number of child grant recipients	15,061	15,579	17,546	-14.16%
Total payments	\$1,584,133	\$1,635,202	\$1,824,927	-13.19%
Average payment per case	\$185.32	\$186.31	\$184.32	0.55%
Average payment per recipient	\$88.45	\$88.30	\$85.81	3.07%
Number of cases with benefits reduced to zero	302	319	393	-23.16%
Number of recipients with benefits reduced to zero	648	661	843	-23.13%
Number of adult recipients with benefit reduced to zero	138	160	207	-33.33%
Number of child recipients with benefit reduced to zero	510	501	636	-19.81%

Two-Parent Families	March 2015	February 2015	March 2014	Annual Change
Number of families receiving TANF Grants	600	615	666	-9.91%
Total number of grant recipients	2,539	2,585	2,735	-7.17%
Number of adult grant recipients	952	970	1,039	-8.37%
Number of child grant recipients	1,587	1,615	1,696	-6.43%
Total payments	\$135,108	\$137,604	\$138,682	-2.58%
Average payment per case	\$225.18	\$223.75	\$208.23	8.14%
Average payment per recipient	\$53.21	\$53.23	\$50.71	4.94%
Number of cases with benefits reduced to zero	25	26	35	-28.57%
Number of recipients with benefits reduced to zero	98	105	147	-33.33%
Number of adult recipients with benefit reduced to zero	39	39	59	-33.90%
Number of child recipients with benefit reduced to zero	59	66	88	-32.95%

Note:

All data July 2014 and following will be broken out according to the new DFR region structure effective July 1 2014.

Source:



DIVISION OF FAMILY RESOURCES

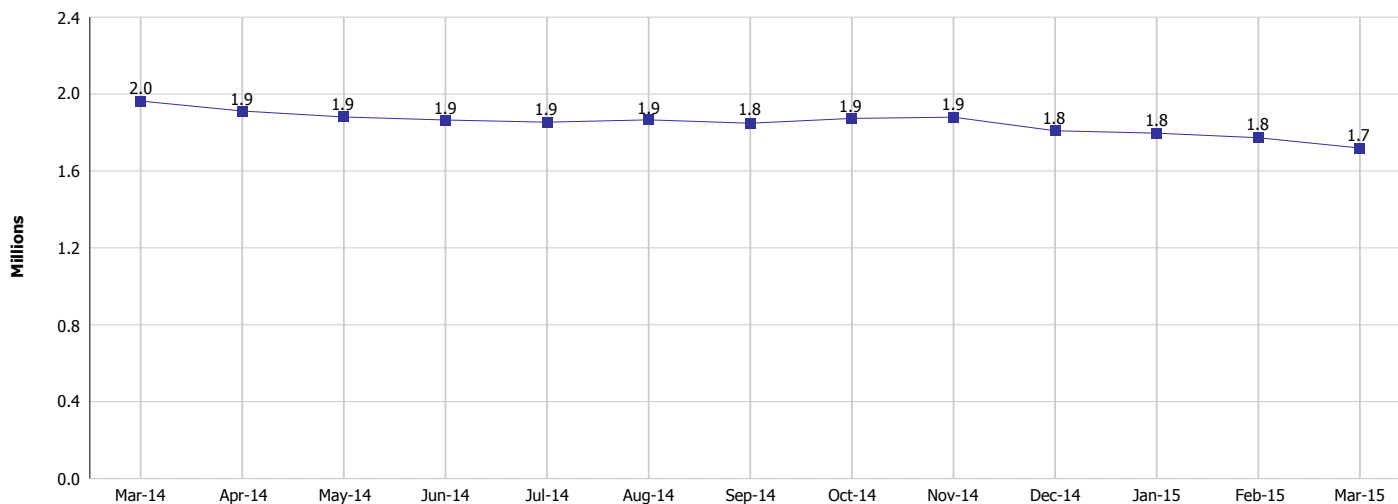
Monthly Management Report

Reporting Month: March 2015

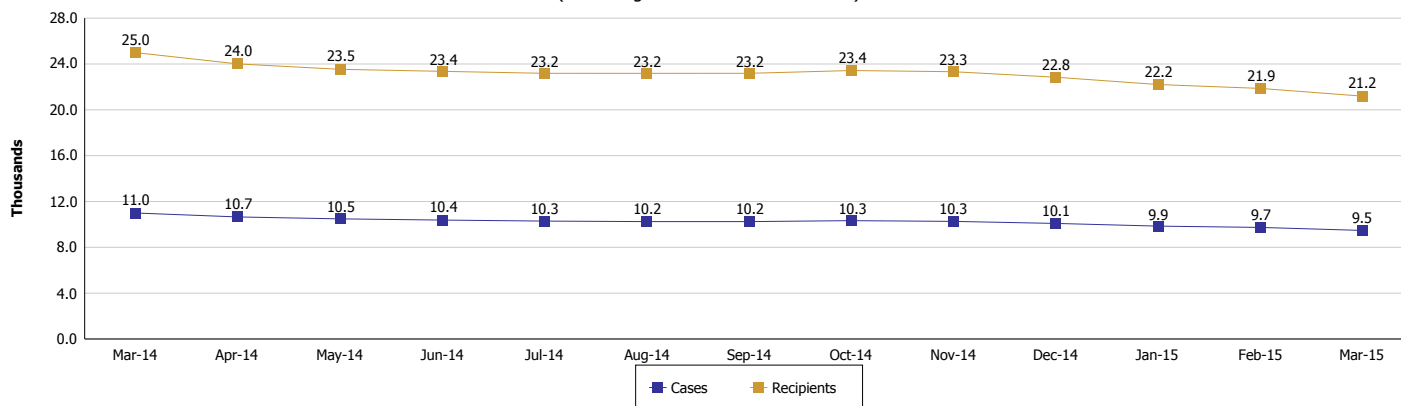
Location: Statewide

TEMPORARY ASSISTANCE FOR NEEDY FAMILIES (TANF)

TANF Cash Assistance
(TANF Regular and TANF Two-Parent)



TANF Cases and Recipients
(TANF Regular and TANF Two-Parent)



Note:

All data July 2014 and following will be broken out according to the new DFR region structure effective July 1 2014.



DIVISION OF FAMILY RESOURCES

Monthly Management Report

Reporting Month: March 2015

Location: Statewide

SUPPLEMENTAL NUTRITION ASSISTANCE PROGRAM (SNAP)

	March 2015	February 2015	March 2014	Annual Change
Total issuance	\$104,684,586	\$104,895,220	\$108,752,117	-3.74%
Number of households receiving SNAP benefits	382,978	384,037	405,136	-5.47%
Number of recipients	836,153	839,745	894,755	-6.55%
Average issuance per household	\$273.34	\$273.14	\$268.43	1.83%
Average issuance per recipient	\$125.20	\$124.91	\$121.54	3.01%

Note:

All data July 2014 and following will be broken out according to the new DFR region structure effective July 1 2014.

SNAP ERROR RATES

	November 2014	October 2014	Cumulative FFY 2014
FFY Cumulative Positive Error Rate	6.78%	6.99%	4.47%
Monthly Positive Error Rate	6.57%	6.99%	NA
FFY Cumulative Negative Error Rate	13.71%	9.72%	23.14%
Monthly Negative Error Rate	19.23%	9.72%	NA

Note:

All data July 2014 and following will be broken out according to the new DFR region structure effective July 1 2014.

Notes:

Reporting periods for SNAP Error Rates reflect the review period and Federal submission deadline. The month reported above is the month in which an action was taken included in the review sample.

Positive actions are those which produced an issuance of benefits to a household. Negative actions are those which closed or denied benefits to a household.

Error Rate data is reported by the state before the federal agency has accepted and finalized the results. This rate is subject to revision based upon: completion and submission of outstanding reviews; final review corrections; and completion of previously dropped reviews. Monthly numbers are taken from end-of-month totals. The error status of cases may be changed by the State or Federal Review process, which would cause a change that might not be reflected in the previous monthly numbers.



DIVISION OF FAMILY RESOURCES

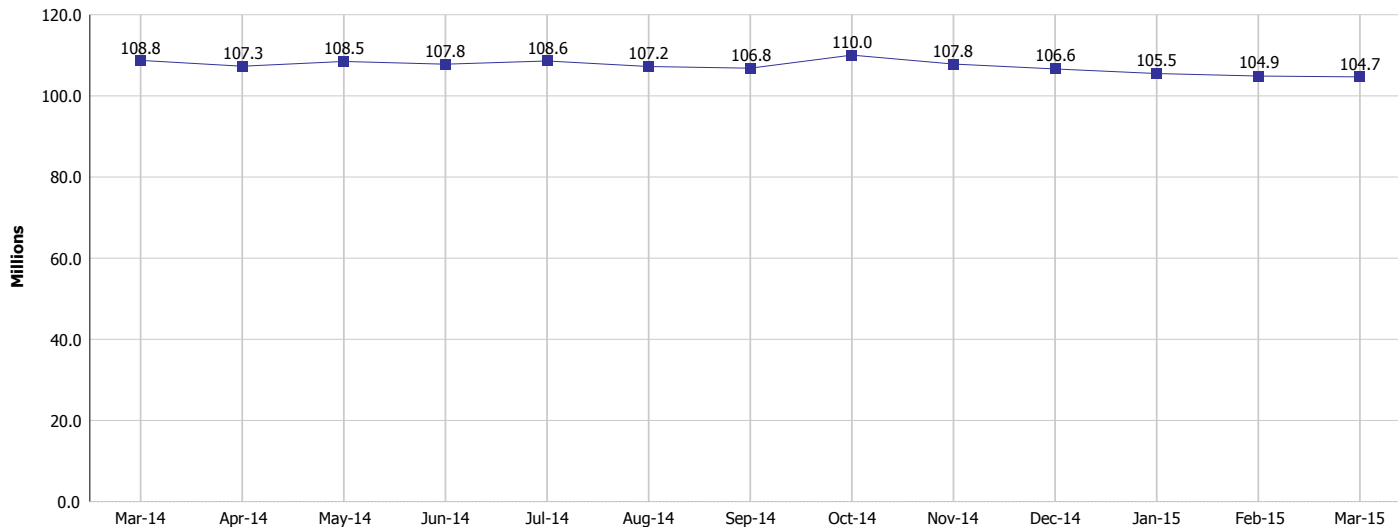
Monthly Management Report

Reporting Month: March 2015

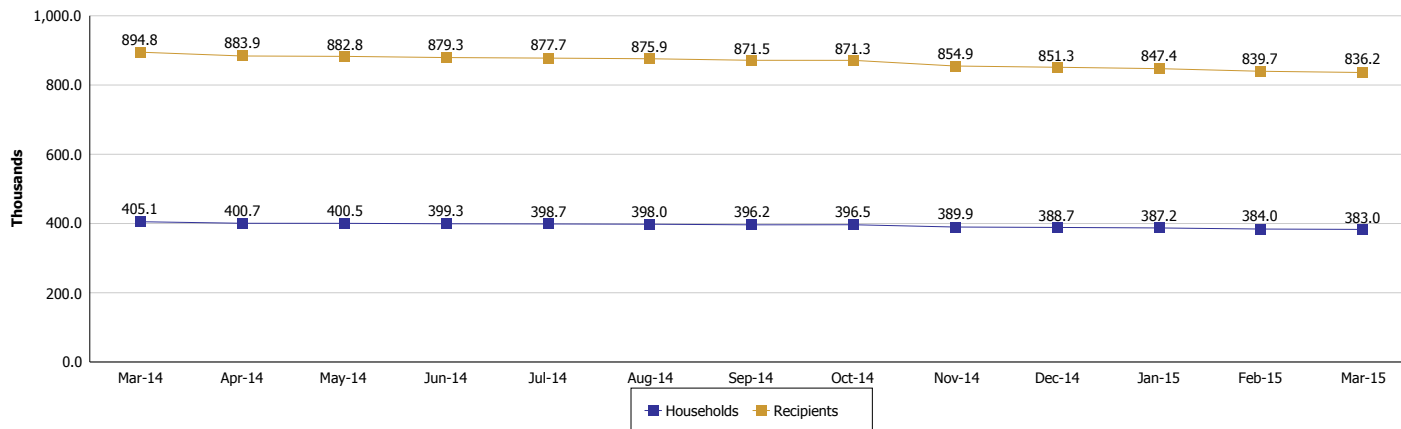
Location: Statewide

SUPPLEMENTAL NUTRITION ASSISTANCE PROGRAM (SNAP)

SNAP Issuance



SNAP Households and Recipients



Note:

All data July 2014 and following will be broken out according to the new DFR region structure effective July 1 2014.



DIVISION OF FAMILY RESOURCES

Monthly Management Report

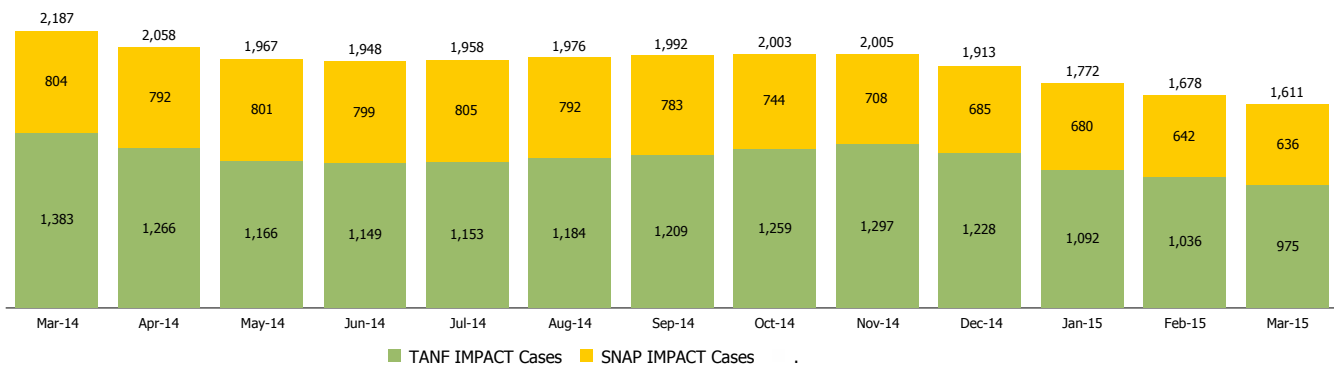
Reporting Month: March 2015

Location: Statewide

INDIANA MANPOWER PLACEMENT AND COMPREHENSIVE TRAINING (IMPACT)

	March 2015	February 2015	March 2014	Annual Change
Number of IMPACT cases	1,611	1,678	2,187	-26.34%
Number of TANF IMPACT adults	975	1,036	1,383	-29.50%
Number of SNAP IMPACT Cases	636	642	804	-20.90%
Total number of adults employed	225	154	189	19.05%
Number of TANF IMPACT adults newly employed (within past 30 days)	137	92	132	3.79%
Number of SNAP IMPACT adults employed	88	62	57	54.39%
Total number of adults ineligible due to employment	1,779	2,094	1,879	-5.32%
Number of TANF adults ineligible due to employment	25	17	14	78.57%
Number of SNAP adults ineligible due to employment	1,754	2,077	1,865	-5.95%

IMPACT Caseloads
(SNAP, TANF, Total Caseload)



Note:

All data July 2014 and following will be broken out according to the new DFR region structure effective July 1 2014.



DIVISION OF FAMILY RESOURCES

Monthly Management Report

Reporting Month: March 2015

Location: Statewide

CHILD CARE

	March 2015	February 2015	March 2014	Annual Change
Total Subsidized Child Care Payments	15,680,610	15,686,536	14,761,458	6.23%
Total Number of CCDF Children	37,485	37,538	40,208	-6.77%
Total Number of licensed Child Care Homes	2,755	2,763	2,795	-1.43%
Licensed Capacity of Child Care Homes	35,116	35,266	35,542	-1.20%
Total Number of Licensed CC Centers	615	612	594	3.54%
Licensed Capacity of CC Centers	67,394	67,070	65,131	3.47%
Total Number of Registered Ministries (Capacity not Regulated)	660	656	647	2.01%

Note:

All data July 2014 and following will be broken out according to the new DFR region structure effective July 1 2014.