



## DIVISION OF FAMILY RESOURCES

# Monthly Management Report June 2012

**State of Indiana**  
Mitchell E. Daniels, Jr.  
Governor

**Family and Social Services  
Administration**  
Michael Gargano  
Secretary

**Division of Family  
Resources**  
Mike Carr  
Interim Director

For questions regarding data on this report contact:  
[office.Communications@fssa.IN.gov](mailto:office.Communications@fssa.IN.gov)



## State of Indiana

Published July 2012



## DIVISION OF FAMILY RESOURCES

### Monthly Management Report

Reporting Month: June 2012

Location: Statewide

#### TEMPORARY ASSISTANCE FOR NEEDY FAMILIES (TANF)

<b>Child-Only and One-Parent Families</b>	<b>June 2012</b>	<b>May 2012</b>	<b>June 2011</b>	<b>Annual Change</b>
Number of families receiving TANF Grants	14,410	14,834	22,139	-34.91%
Total number of grant recipients	33,451	34,529	54,255	-38.34%
Number of adult grant recipients	7,475	7,824	14,849	-49.66%
Number of child grant recipients	25,976	26,705	39,406	-34.08%
Total payments	\$2,678,730	\$2,747,692	\$4,505,157	-40.54%
Average payment per case	\$185.89	\$185.23	\$203.49	-8.65%
Average payment per recipient	\$80.08	\$79.58	\$83.04	-3.56%
Number of cases with benefits reduced to zero	656	657	1,923	-65.89%
Number of recipients with benefits reduced to zero	1,552	1,569	5,301	-70.72%
Number of adult recipients with benefit reduced to zero	454	457	1,710	-73.45%
Number of child recipients with benefit reduced to zero	1,098	1,112	3,591	-69.42%

<b>Two-Parent Families</b>	<b>June 2012</b>	<b>May 2012</b>	<b>June 2011</b>	<b>Annual Change</b>
Number of families receiving TANF Grants	1,018	1,066	2,281	-55.37%
Total number of grant recipients	4,140	4,365	9,023	-54.12%
Number of adult grant recipients	1,618	1,711	3,943	-58.97%
Number of child grant recipients	2,522	2,654	5,080	-50.35%
Total payments	\$220,735	\$224,826	\$601,711	-63.32%
Average payment per case	\$216.83	\$210.91	\$263.79	-17.80%
Average payment per recipient	\$53.32	\$51.51	\$66.69	-20.05%
Number of cases with benefits reduced to zero	38	46	287	-86.76%
Number of recipients with benefits reduced to zero	137	170	1,234	-88.90%
Number of adult recipients with benefit reduced to zero	53	68	527	-89.94%
Number of child recipients with benefit reduced to zero	84	102	707	-88.12%



## DIVISION OF FAMILY RESOURCES

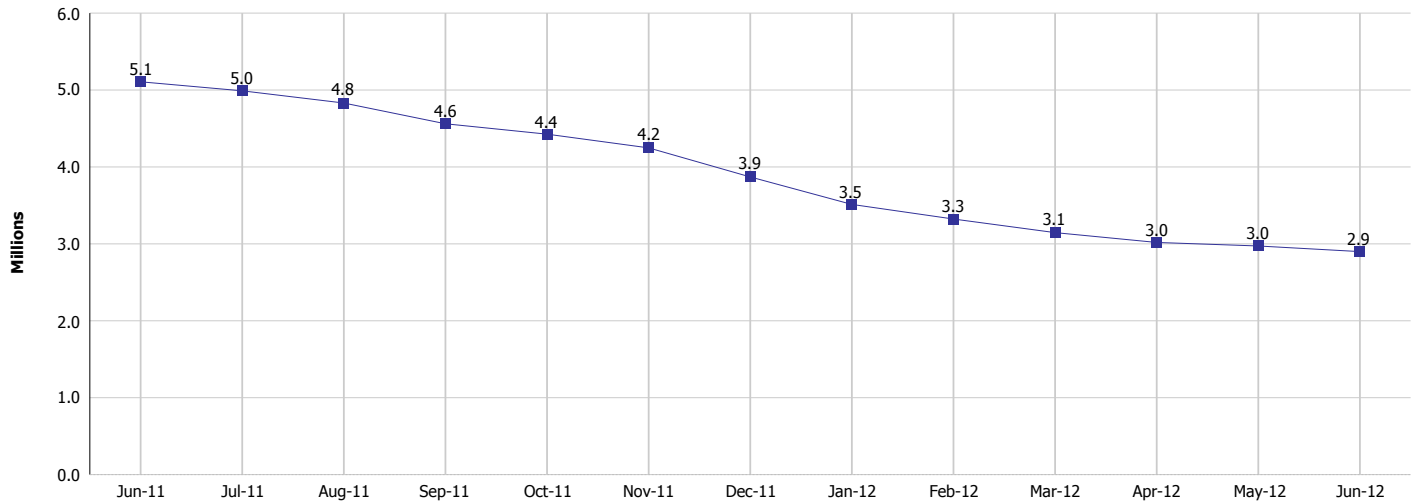
### Monthly Management Report

Reporting Month: June 2012

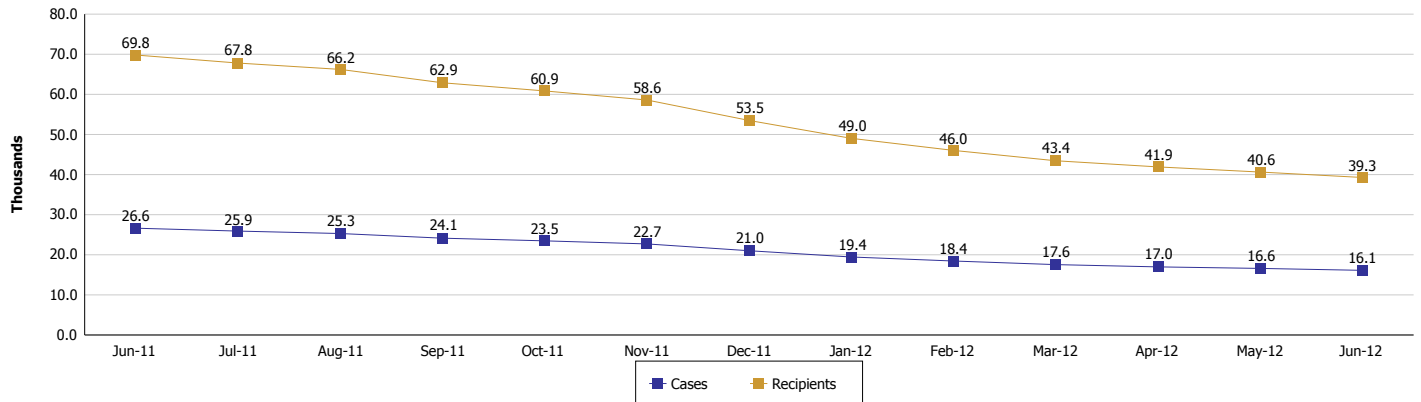
Location: Statewide

#### TEMPORARY ASSISTANCE FOR NEEDY FAMILIES (TANF)

**TANF Cash Assistance**  
(TANF Regular and TANF UP)



**TANF Cases and Recipients**  
(TANF Regular and TANF UP)





## DIVISION OF FAMILY RESOURCES

### Monthly Management Report

Reporting Month: June 2012

Location: Statewide

#### SUPPLEMENTAL NUTRITION ASSISTANCE PROGRAM (SNAP)

	June 2012	May 2012	June 2011	Annual Change
Total issuance	\$120,200,998	\$120,385,565	\$116,554,197	3.13%
Number of households receiving SNAP benefits	402,893	400,468	384,840	4.69%
Number of recipients	908,511	904,754	882,716	2.92%
Average issuance per household	\$298.34	\$300.61	\$302.86	-1.49%
Average issuance per recipient	\$132.31	\$133.06	\$132.04	0.20%

#### SNAP ERROR RATES

	February 2012	January 2012	December 2011	Cumulative FFY 2010
FFY Cumulative Positive Error Rate	5.18%	4.79%	4.58%	2.48%
Monthly Positive Error Rate	6.86%	5.40%	4.47%	NA
FFY Cumulative Negative Error Rate	0.98%	0.83%	1.10%	2.69%
Monthly Negative Error Rate	1.49%	0.00%	0.00%	NA

#### Notes:

Reporting periods for SNAP Error Rates reflect the review period and Federal submission deadline. The month reported above is the month in which an action was taken included in the review sample.

Positive actions are those which produced an issuance of benefits to a household. Negative actions are those which closed or denied benefits to a household.

Error Rate data is reported by the state before the federal agency has accepted and finalized the results. This rate is subject to revision. Monthly numbers are taken from the end of the month totals. Error status of cases may be changed by either State or Federal Review process, which would cause a change that might not be reflected in the previous monthly numbers.



# DIVISION OF FAMILY RESOURCES

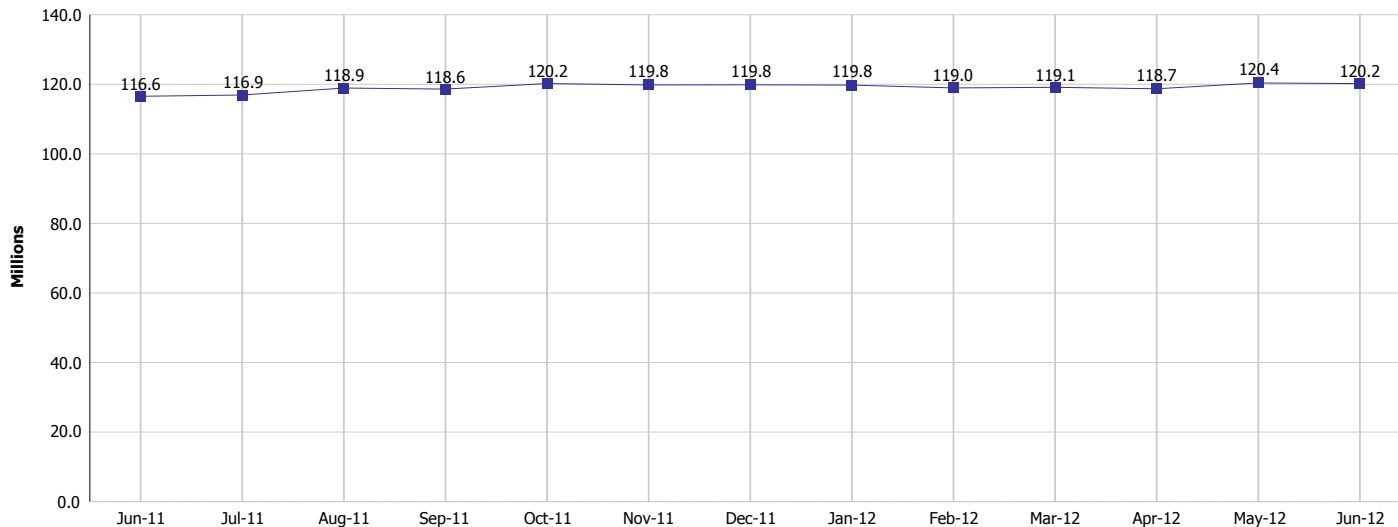
## Monthly Management Report

Reporting Month: June 2012

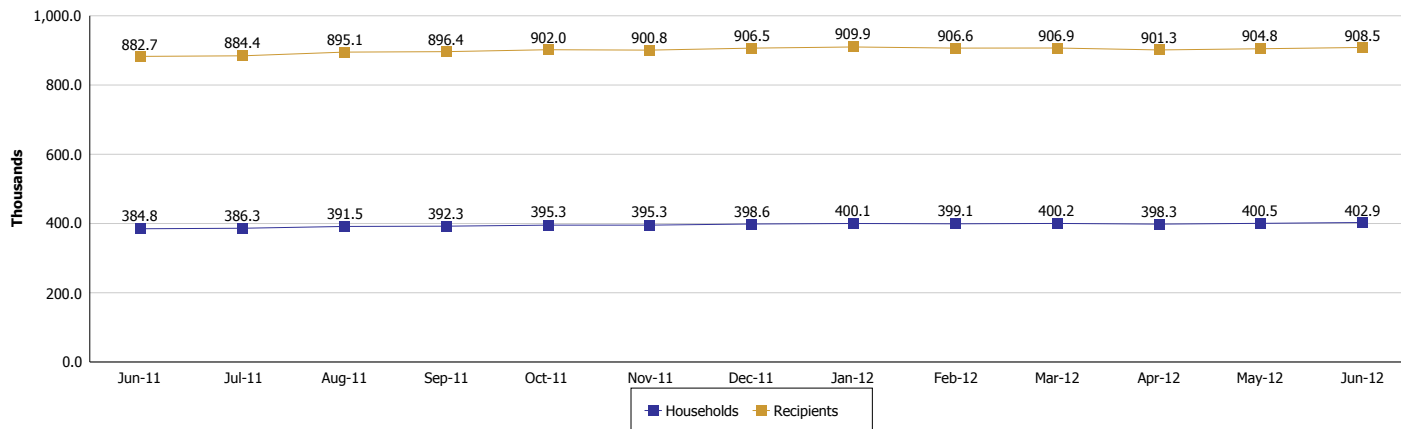
Location: Statewide

### SUPPLEMENTAL NUTRITION ASSISTANCE PROGRAM (SNAP)

#### SNAP Issuance



#### SNAP Households and Recipients





## DIVISION OF FAMILY RESOURCES

### Monthly Management Report

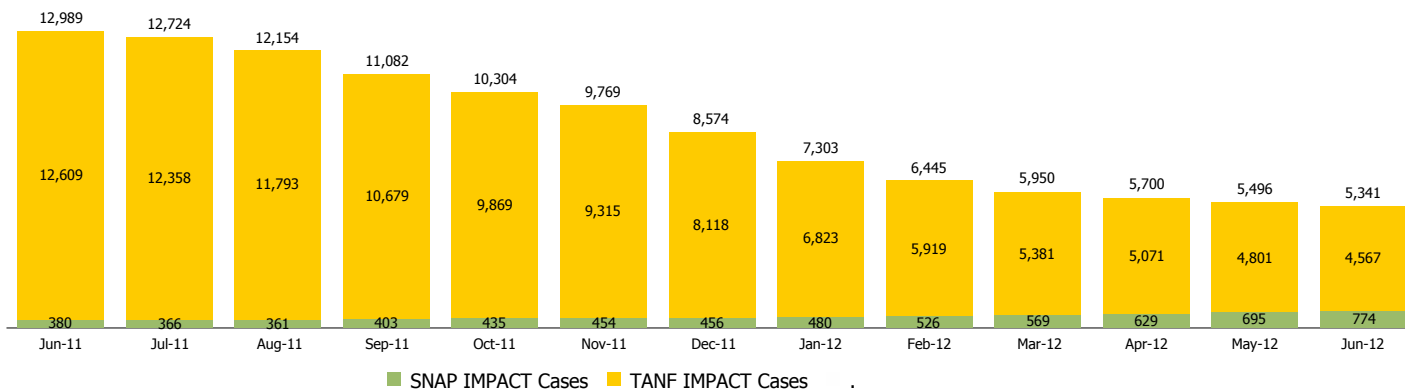
Reporting Month: June 2012

Location: Statewide

#### INDIANA MANPOWER PLACEMENT AND COMPREHENSIVE TRAINING (IMPACT)

	June 2012	May 2012	June 2011	Annual Change
Number of IMPACT cases	5,341	5,496	12,989	-58.88%
Number of TANF IMPACT Cases	4,567	4,801	12,609	-63.78%
Number of SNAP IMPACT Cases	774	695	380	103.68%
Total number of adults employed	364	386	940	-61.28%
Number of TANF IMPACT adults employed	309	323	868	-64.40%
Number of SNAP IMPACT adults employed	55	63	72	-23.61%
Total number of adults ineligible due to employment	1,817	1,559	1,842	-1.36%
Number of TANF adults ineligible due to employment	37	34	71	-47.89%
Number of SNAP adults ineligible due to employment	1,780	1,525	1,771	0.51%

**IMPACT Caseloads**  
(SNAP, TANF, Total Caseload)



**Notes:**

The methodology used for counting the number of TANF IMPACT cases changed in June 2010 to show all individuals referred to IMPACT for services.

Beginning with May 2010 the SNAP IMPACT program became a voluntary program. This change resulted in a substantial reduction in the number of IMPACT cases.



## DIVISION OF FAMILY RESOURCES

### Monthly Management Report

Reporting Month: June 2012

Location: Statewide

#### CHILD CARE

	June 2012	May 2012	June 2011	Annual Change
Total Subsidized Child Care Payments	\$12,158,396	\$12,594,002	\$10,989,056	10.64%
Total Number of CCDF Children	33,479	34,002	30,834	8.58%
Total Number of licensed Child Care Homes	2,874	2,880	2,994	-4.01%
Licensed Capacity of Child Care Homes	36,128	36,123	37,394	-3.39%
Total Number of Licensed CC Centers	598	603	612	-2.29%
Licensed Capacity of CC Centers	64,734	65,212	65,992	-1.91%
Total Number of Registered Ministries (Capacity not Regulated)	721	723	739	-2.44%