



DIVISION OF FAMILY RESOURCES

Monthly Management Report July 2017

State of Indiana

Eric Holcomb
Governor

Family and Social Services Administration

Jennifer Walthall, M.D.
Secretary

Division of Family Resources

Adrienne Shields
Director

For questions regarding data on this report contact:
office.Communications@fssa.IN.gov



State of Indiana

Published August 2017



DIVISION OF FAMILY RESOURCES

Monthly Management Report

Reporting Month: July 2017

Location: Statewide

TEMPORARY ASSISTANCE FOR NEEDY FAMILIES (TANF)

| Child-Only and One-Parent Families | Jul 31, 2017 | June 2017 | July 2016 | Annual Change |
|---|--------------|-------------|-------------|---------------|
| Number of families receiving TANF Grants | 6,589 | 6,553 | 7,379 | -10.71% |
| Total number of grant recipients | 13,622 | 13,429 | 15,251 | -10.68% |
| Number of adult grant recipients | 1,887 | 1,832 | 2,256 | -16.36% |
| Number of child grant recipients | 11,735 | 11,597 | 12,995 | -9.70% |
| Total payments | \$1,253,506 | \$1,240,680 | \$1,397,566 | -10.31% |
| Average payment per case | \$190.24 | \$189.33 | \$189.40 | 0.45% |
| Average payment per recipient | \$92.02 | \$92.39 | \$91.64 | 0.42% |
| Number of cases with benefits reduced to zero | 106 | 108 | 179 | -40.78% |
| Number of recipients with benefits reduced to zero | 201 | 219 | 384 | -47.66% |
| Number of adult recipients with benefit reduced to zero | 46 | 48 | 93 | -50.54% |
| Number of child recipients with benefit reduced to zero | 155 | 171 | 291 | -46.74% |

| Two-Parent Families | Jul 31, 2017 | June 2017 | July 2016 | Annual Change |
|---|--------------|-----------|-----------|---------------|
| Number of families receiving TANF Grants | 336 | 332 | 442 | -23.98% |
| Total number of grant recipients | 1,378 | 1,372 | 1,812 | -23.95% |
| Number of adult grant recipients | 500 | 497 | 694 | -27.95% |
| Number of child grant recipients | 878 | 875 | 1,118 | -21.47% |
| Total payments | \$73,052 | \$69,709 | \$101,133 | -27.77% |
| Average payment per case | \$217.42 | \$209.97 | \$228.81 | -4.98% |
| Average payment per recipient | \$53.01 | \$50.81 | \$55.81 | -5.02% |
| Number of cases with benefits reduced to zero | 8 | 7 | 17 | -52.94% |
| Number of recipients with benefits reduced to zero | 28 | 25 | 59 | -52.54% |
| Number of adult recipients with benefit reduced to zero | 10 | 10 | 26 | -61.54% |
| Number of child recipients with benefit reduced to zero | 18 | 15 | 33 | -45.45% |

Note:

All data July 2014 and following will be broken out according to the new DFR region structure effective July 1 2014.

Source:



DIVISION OF FAMILY RESOURCES

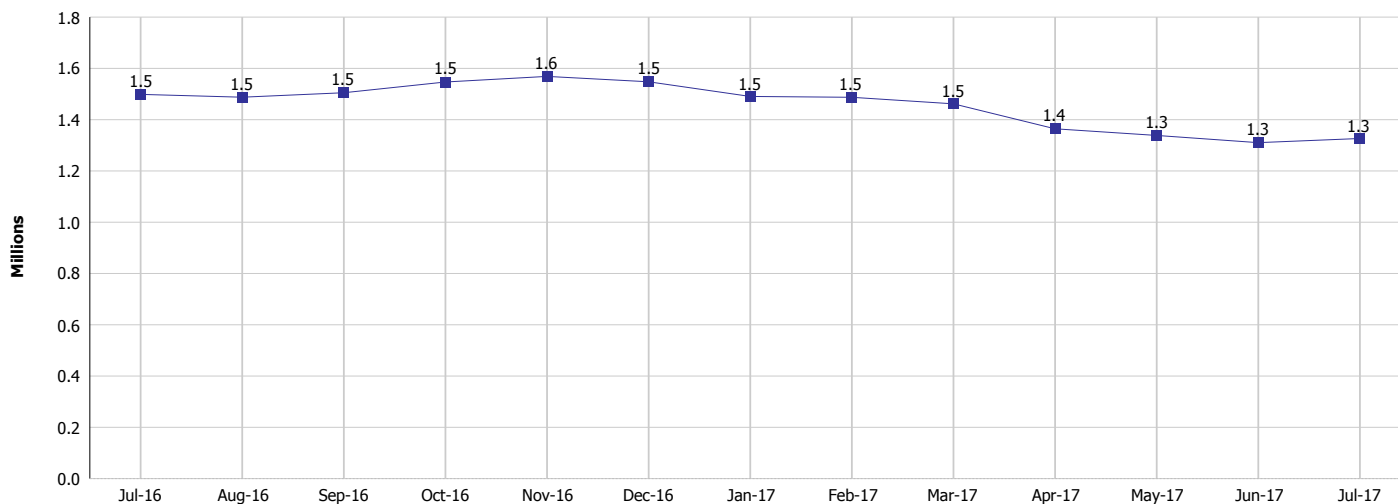
Monthly Management Report

Reporting Month: July 2017

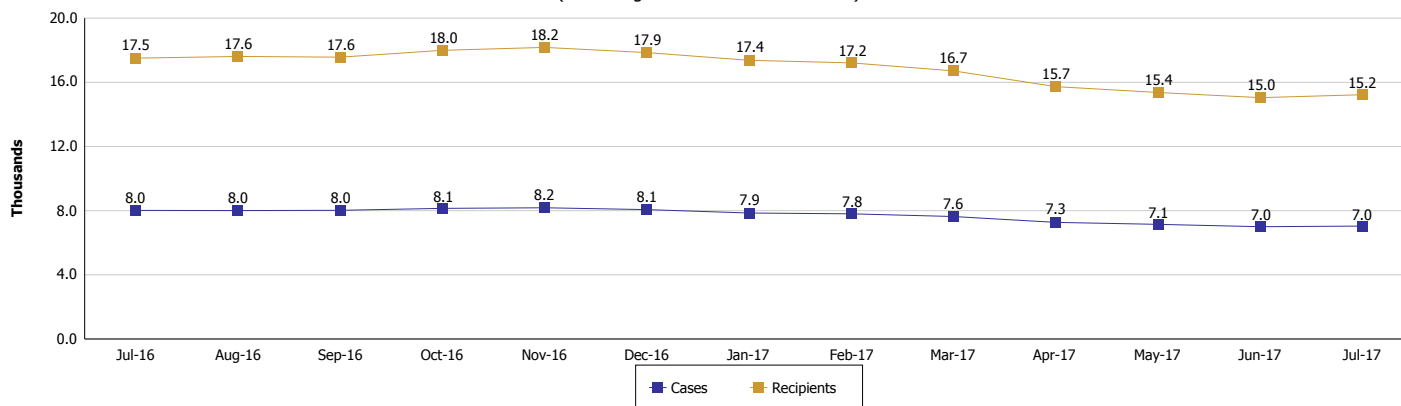
Location: Statewide

TEMPORARY ASSISTANCE FOR NEEDY FAMILIES (TANF)

TANF Cash Assistance
(TANF Regular and TANF Two-Parent)



TANF Cases and Recipients
(TANF Regular and TANF Two-Parent)



Note:

All data July 2014 and following will be broken out according to the new DFR region structure effective July 1 2014.



DIVISION OF FAMILY RESOURCES

Monthly Management Report

Reporting Month: July 2017

Location: Statewide

SUPPLEMENTAL NUTRITION ASSISTANCE PROGRAM (SNAP)

| | July 2017 | June 2017 | July 2016 | Annual Change |
|--|--------------|--------------|--------------|---------------|
| Total issuance | \$77,833,407 | \$78,249,643 | \$85,432,794 | -8.90% |
| Number of households receiving SNAP benefits | 288,309 | 290,438 | 315,448 | -8.60% |
| Number of recipients | 649,396 | 654,722 | 714,843 | -9.16% |
| Average issuance per household | \$269.97 | \$269.42 | \$270.83 | -0.32% |
| Average issuance per recipient | \$119.86 | \$119.52 | \$119.51 | 0.29% |

Note:

All data July 2014 and following will be broken out according to the new DFR region structure effective July 1 2014.

SNAP ERROR RATES

| | March 2017 | February 2017 | January 2017 | Cumulative FFY 2016 |
|------------------------------------|------------|---------------|--------------|---------------------|
| FFY Cumulative Positive Error Rate | 8.73% | 9.22% | 9.45% | 6.94% |
| Monthly Positive Error Rate | 5.18% | 8.24% | 9.04% | NA |
| FFY Cumulative Negative Error Rate | 32.51% | 34.10% | 34.01% | 27.12% |
| Monthly Negative Error Rate | 24.59% | 34.48% | 39.34% | NA |

Note:

All data July 2014 and following will be broken out according to the new DFR region structure effective July 1 2014.

Notes:

Reporting periods for SNAP Error Rates reflect the review period and Federal submission deadline. The month reported above is the month in which an action was taken included in the review sample.

Positive actions are those which produced an issuance of benefits to a household. Negative actions are those which closed or denied benefits to a household.

Error Rate data is reported by the state before the federal agency has accepted and finalized the results. This rate is subject to revision based upon: completion and submission of outstanding reviews; final review corrections; and completion of previously dropped reviews. Monthly numbers are taken from end-of-month totals. The error status of cases may be changed by the State or Federal Review process, which would cause a change that might not be reflected in the previous monthly numbers.



DIVISION OF FAMILY RESOURCES

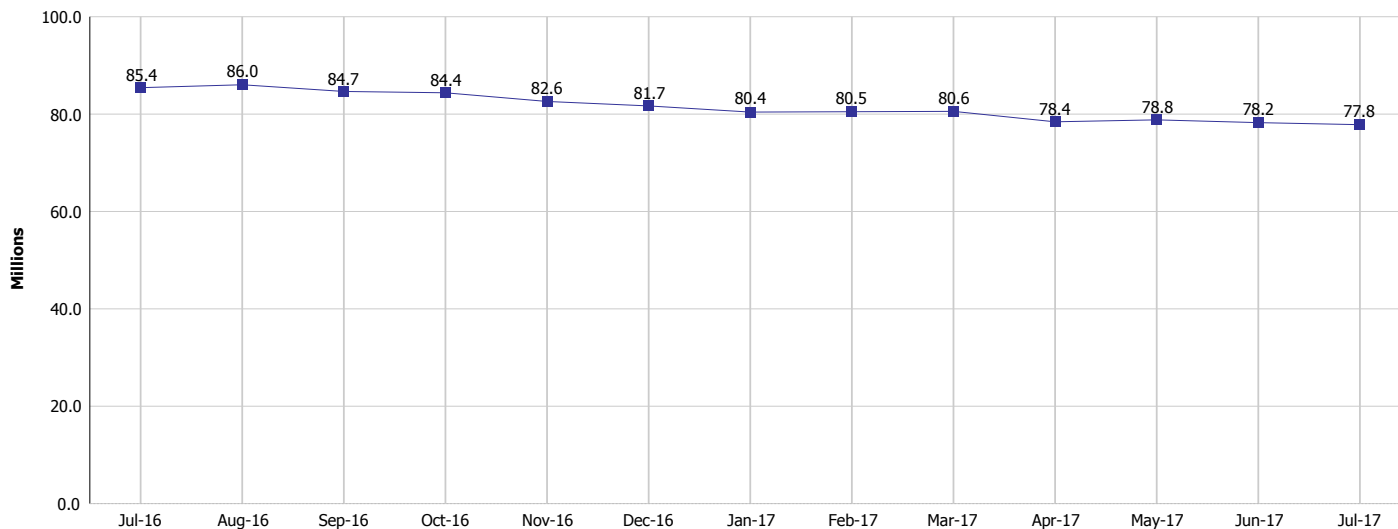
Monthly Management Report

Reporting Month: July 2017

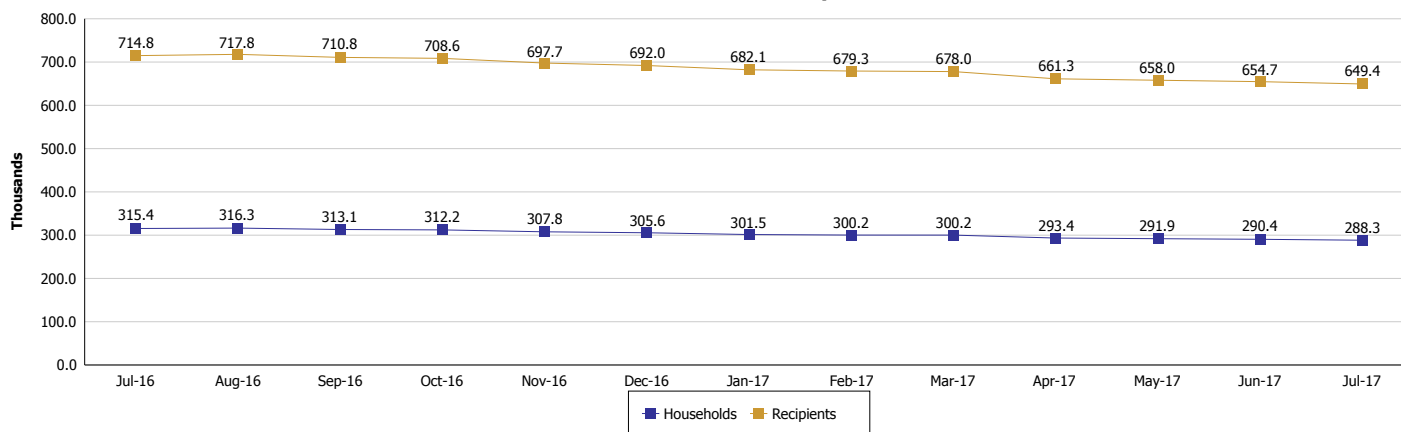
Location: Statewide

SUPPLEMENTAL NUTRITION ASSISTANCE PROGRAM (SNAP)

SNAP Issuance



SNAP Households and Recipients



Note:

All data July 2014 and following will be broken out according to the new DFR region structure effective July 1 2014.



DIVISION OF FAMILY RESOURCES

Monthly Management Report

Reporting Month: July 2017

Location: Statewide

HIP 2.0 and SNAP

| | July 2017 | June 2017 | July 2016 | Annual Change |
|--|-----------|-----------|-----------|---------------|
| Total HIP 2.0 Members | 443,884 | 442,924 | 407,176 | 9.02% |
| HIP Members also SNAP Recipients | 152,256 | 153,487 | 161,907 | -5.96% |
| Percentage HIP Members SNAP Recipients | 34.3% | 34.7% | 39.8% | 4.51% |
| HIP Members SNAP ABAWDs | 4,377 | 4,383 | 5,542 | -21.02% |
| Percentage HIP Members SNAP ABAWDs | 1.0% | 1.0% | 1.4% | 4.51% |

Note:

All data July 2014 and following will be broken out according to the new DFR region structure effective July 1 2014.



DIVISION OF FAMILY RESOURCES

Monthly Management Report

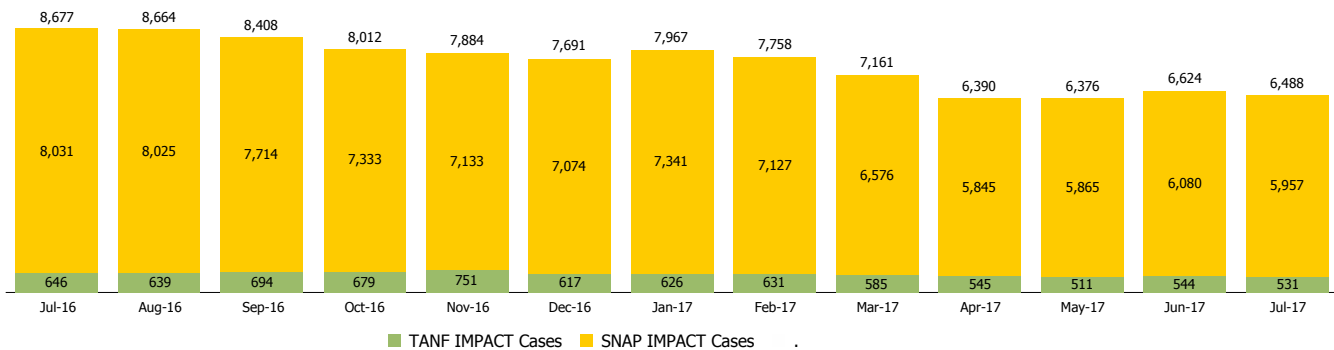
Reporting Month: July 2017

Location: Statewide

INDIANA MANPOWER PLACEMENT AND COMPREHENSIVE TRAINING (IMPACT)

| | July 2017 | June 2017 | July 2016 | Annual Change |
|---|-----------|-----------|-----------|---------------|
| Number of IMPACT cases | 6,488 | 6,624 | 8,677 | -25.23% |
| Number of TANF IMPACT adults | 531 | 544 | 646 | -17.80% |
| Number of SNAP IMPACT Cases | 5,957 | 6,080 | 8,031 | -25.82% |
| Total number of adults employed | 926 | 1,219 | 1,363 | -32.06% |
| Number of TANF IMPACT adults newly employed (within past 30 days) | 82 | 94 | 132 | -37.88% |
| Number of SNAP IMPACT adults employed | 844 | 1,125 | 1,231 | -31.44% |
| Total number of adults ineligible due to employment | 5,345 | 5,910 | 6,331 | -15.57% |
| Number of TANF adults ineligible due to employment | 15 | 16 | 19 | -21.05% |
| Number of SNAP adults ineligible due to employment | 5,330 | 5,894 | 6,312 | -15.56% |

IMPACT Caseloads
(SNAP, TANF, Total Caseload)



Note:

All data July 2014 and following will be broken out according to the new DFR region structure effective July 1 2014.