



DIVISION OF FAMILY RESOURCES

Monthly Management Report December 2018

State of Indiana

Eric Holcomb
Governor

Family and Social Services Administration

Jennifer Walthall, M.D.
Secretary

Division of Family Resources

Adrienne Shields
Director

For questions regarding data on this report contact:
office.Communications@fssa.IN.gov



State of Indiana

Published January 2019



DIVISION OF FAMILY RESOURCES

Monthly Management Report

Reporting Month: December 2018

Location: Statewide

TEMPORARY ASSISTANCE FOR NEEDY FAMILIES (TANF)

Child-Only and One-Parent Families	Dec 31, 2018	November 2018	December 2017	Annual Change
Number of families receiving TANF Grants	5,781	5,853	6,654	-13.12%
Total number of grant recipients	12,065	12,235	14,016	-13.92%
Number of adult grant recipients	1,687	1,717	2,089	-19.24%
Number of child grant recipients	10,378	10,518	11,927	-12.99%
Total payments	\$1,133,263	\$1,131,430	\$1,315,251	-13.84%
Average payment per case	\$196.03	\$193.31	\$197.66	-0.83%
Average payment per recipient	\$93.93	\$92.47	\$93.84	0.10%
Number of cases with benefits reduced to zero	70	71	109	-35.78%
Number of recipients with benefits reduced to zero	141	152	232	-39.22%
Number of adult recipients with benefit reduced to zero	33	36	57	-42.11%
Number of child recipients with benefit reduced to zero	108	116	175	-38.29%

Two-Parent Families	Dec 31, 2018	November 2018	December 2017	Annual Change
Number of families receiving TANF Grants	224	228	294	-23.81%
Total number of grant recipients	863	885	1,158	-25.47%
Number of adult grant recipients	302	307	414	-27.05%
Number of child grant recipients	561	578	744	-24.60%
Total payments	\$48,888	\$48,752	\$62,165	-21.36%
Average payment per case	\$218.25	\$213.82	\$211.45	3.22%
Average payment per recipient	\$56.65	\$55.09	\$53.68	5.52%
Number of cases with benefits reduced to zero	4	4	4	0.00%
Number of recipients with benefits reduced to zero	18	18	15	20.00%
Number of adult recipients with benefit reduced to zero	6	6	6	0.00%
Number of child recipients with benefit reduced to zero	12	12	9	33.33%

Note:

All data July 2014 and following will be broken out according to the new DFR region structure effective July 1 2014.

Source:



DIVISION OF FAMILY RESOURCES

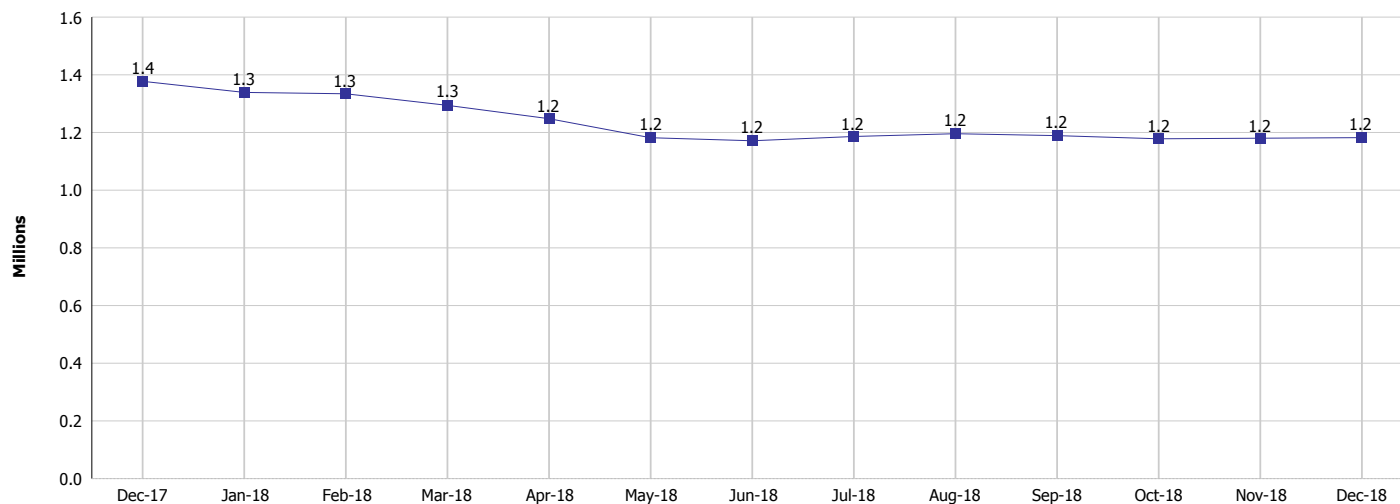
Monthly Management Report

Reporting Month: December 2018

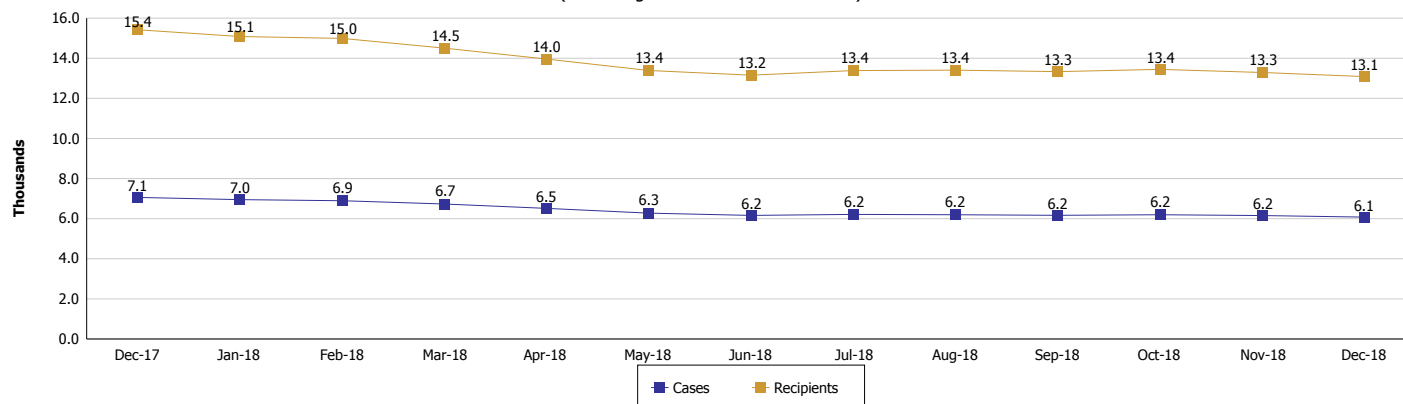
Location: Statewide

TEMPORARY ASSISTANCE FOR NEEDY FAMILIES (TANF)

TANF Cash Assistance
(TANF Regular and TANF Two-Parent)



TANF Cases and Recipients
(TANF Regular and TANF Two-Parent)



Note:

All data July 2014 and following will be broken out according to the new DFR region structure effective July 1 2014.



DIVISION OF FAMILY RESOURCES

Monthly Management Report

Reporting Month: December 2018

Location: Statewide

SUPPLEMENTAL NUTRITION ASSISTANCE PROGRAM (SNAP)

	December 2018	November 2018	December 2017	Annual Change
Total issuance	\$68,935,862	\$69,729,472	\$73,734,185	-6.51%
Number of households receiving SNAP benefits	263,004	265,003	280,718	-6.31%
Number of recipients	584,699	590,828	630,606	-7.28%
Average issuance per household	\$262.11	\$263.13	\$262.66	-0.21%
Average issuance per recipient	\$117.90	\$118.02	\$116.93	0.83%

Note:

All data July 2014 and following will be broken out according to the new DFR region structure effective July 1 2014.

SNAP ERROR RATES

	August 2018	July 2018	June 2018	Cumulative FFY 2017
FFY Cumulative Positive Error Rate	5.84%	5.70%	5.26%	9.19%
Monthly Positive Error Rate	7.21%	9.19%	7.60%	NA
FFY Cumulative Negative Error Rate	38.75%	39.62%	40.31%	30.52%
Monthly Negative Error Rate	30.65%	33.33%	32.14%	NA

Note:

All data July 2014 and following will be broken out according to the new DFR region structure effective July 1 2014.

Notes:

Reporting periods for SNAP Error Rates reflect the review period and Federal submission deadline. The month reported above is the month in which an action was taken included in the review sample.

Positive actions are those which produced an issuance of benefits to a household. Negative actions are those which closed or denied benefits to a household.

Error Rate data is reported by the state before the federal agency has accepted and finalized the results. This rate is subject to revision based upon: completion and submission of outstanding reviews; final review corrections; and completion of previously dropped reviews. Monthly numbers are taken from end-of-month totals. The error status of cases may be changed by the State or Federal Review process, which would cause a change that might not be reflected in the previous monthly numbers.



DIVISION OF FAMILY RESOURCES

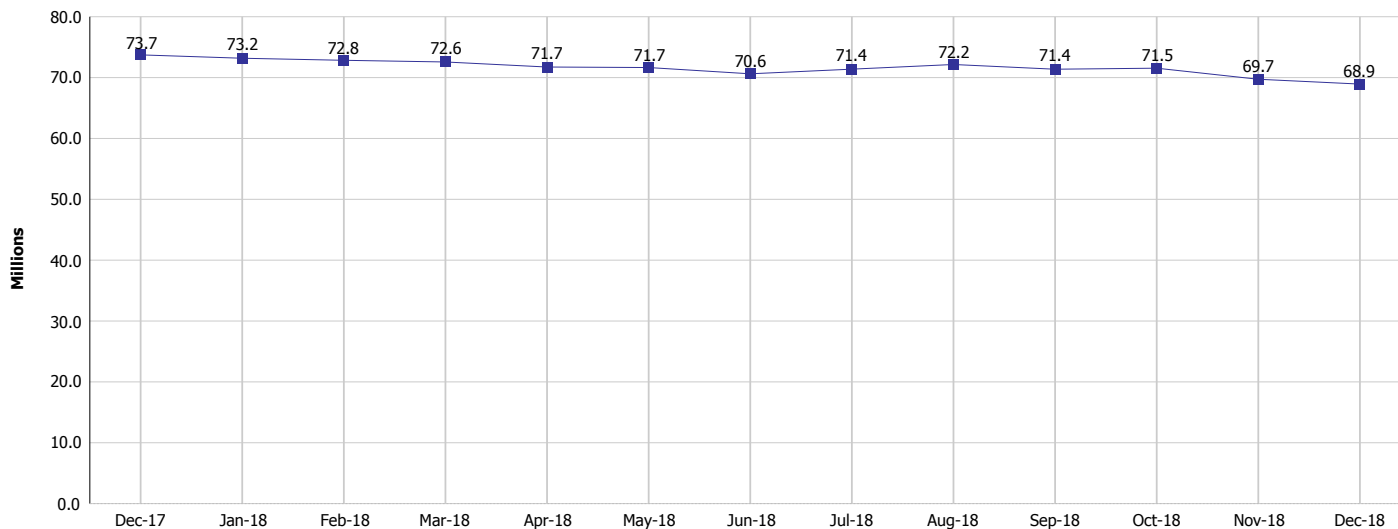
Monthly Management Report

Reporting Month: December 2018

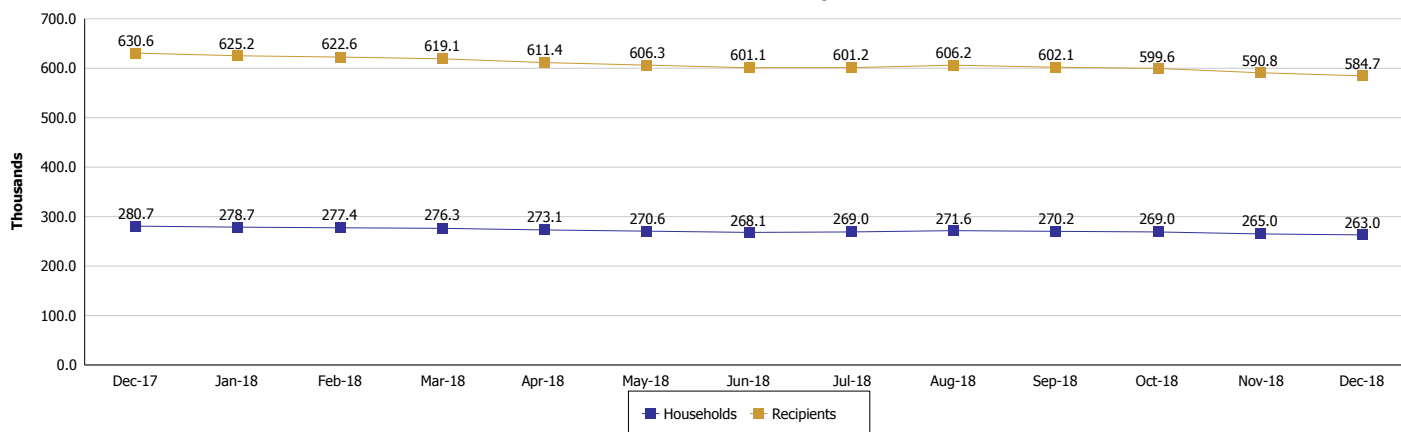
Location: Statewide

SUPPLEMENTAL NUTRITION ASSISTANCE PROGRAM (SNAP)

SNAP Issuance



SNAP Households and Recipients



Note:

All data July 2014 and following will be broken out according to the new DFR region structure effective July 1 2014.



DIVISION OF FAMILY RESOURCES

Monthly Management Report

Reporting Month: December 2018

Location: Statewide

HIP 2.0 and SNAP

	December 2018	November 2018	December 2017	Annual Change
Total HIP 2.0 Members	424,087	424,599	446,002	-4.91%
HIP Members also SNAP Recipients	141,061	142,591	146,568	-3.76%
Percentage HIP Members SNAP Recipients	33.3%	33.6%	32.9%	-4.41%
HIP Members SNAP ABAWDs	4,961	5,136	3,847	28.96%
Percentage HIP Members SNAP ABAWDs	1.2%	1.2%	0.9%	-4.41%

Note:

All data July 2014 and following will be broken out according to the new DFR region structure effective July 1 2014.



DIVISION OF FAMILY RESOURCES

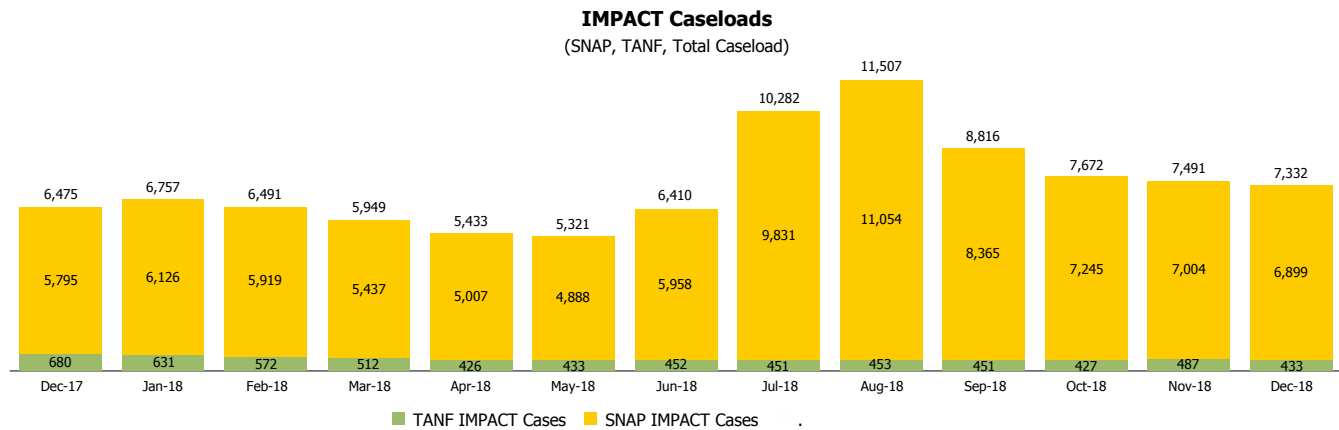
Monthly Management Report

Reporting Month: December 2018

Location: Statewide

INDIANA MANPOWER PLACEMENT AND COMPREHENSIVE TRAINING (IMPACT)

	December 2018	November 2018	December 2017	Annual Change
Number of IMPACT cases	7,332	7,491	6,475	13.24%
Number of TANF IMPACT adults	433	487	680	-36.32%
Number of SNAP IMPACT Cases	6,899	7,004	5,795	19.05%
Total number of adults employed	997	1,177	938	6.29%
Number of TANF IMPACT adults newly employed (within past 30 days)	69	90	104	-33.65%
Number of SNAP IMPACT adults employed	928	1,087	834	11.27%
Total number of adults ineligible due to employment	5,816	6,299	5,834	-0.31%
Number of TANF adults ineligible due to employment	10	26	17	-41.18%
Number of SNAP adults ineligible due to employment	5,806	6,273	5,817	-0.19%



Note:

All data July 2014 and following will be broken out according to the new DFR region structure effective July 1 2014.