



## DIVISION OF FAMILY RESOURCES

# Monthly Management Report August 2014

### State of Indiana

Michael R. Pence  
Governor

### Family and Social Services Administration

John J. Wernert, M.D.  
Secretary

### Division of Family Resources

Lance Rhodes  
Director

For questions regarding data on this report contact:  
[office.Communications@fssa.IN.gov](mailto:office.Communications@fssa.IN.gov)



## State of Indiana

Published September 2014



## DIVISION OF FAMILY RESOURCES

### Monthly Management Report

Reporting Month: August 2014

Location: Statewide

#### TEMPORARY ASSISTANCE FOR NEEDY FAMILIES (TANF)

Child-Only and One-Parent Families	August 2014	July 2014	August 2013	Annual Change
Number of families receiving TANF Grants	9,241	9,274	11,109	-16.82%
Total number of grant recipients	19,694	19,657	24,327	-19.04%
Number of adult grant recipients	3,278	3,249	4,630	-29.20%
Number of child grant recipients	16,416	16,408	19,697	-16.66%
Total payments	\$1,730,984	\$1,718,531	\$2,063,172	-16.10%
Average payment per case	\$187.32	\$185.31	\$185.72	0.86%
Average payment per recipient	\$87.89	\$87.43	\$84.81	3.64%
Number of cases with benefits reduced to zero	330	342	442	-25.34%
Number of recipients with benefits reduced to zero	714	764	982	-27.29%
Number of adult recipients with benefit reduced to zero	179	187	250	-28.40%
Number of child recipients with benefit reduced to zero	535	577	732	-26.91%

Two-Parent Families	August 2014	July 2014	August 2013	Annual Change
Number of families receiving TANF Grants	639	643	781	-18.18%
Total number of grant recipients	2,638	2,637	3,233	-18.40%
Number of adult grant recipients	983	991	1,272	-22.72%
Number of child grant recipients	1,655	1,646	1,961	-15.60%
Total payments	\$134,687	\$135,160	\$166,913	-19.31%
Average payment per case	\$210.78	\$210.20	\$213.72	-1.38%
Average payment per recipient	\$51.06	\$51.26	\$51.63	-1.11%
Number of cases with benefits reduced to zero	34	32	28	21.43%
Number of recipients with benefits reduced to zero	138	129	103	33.98%
Number of adult recipients with benefit reduced to zero	54	50	43	25.58%
Number of child recipients with benefit reduced to zero	84	79	60	40.00%

**Note:**

All data July 2014 and following will be broken out according to the new DFR region structure effective July 1 2014.

Source:



## DIVISION OF FAMILY RESOURCES

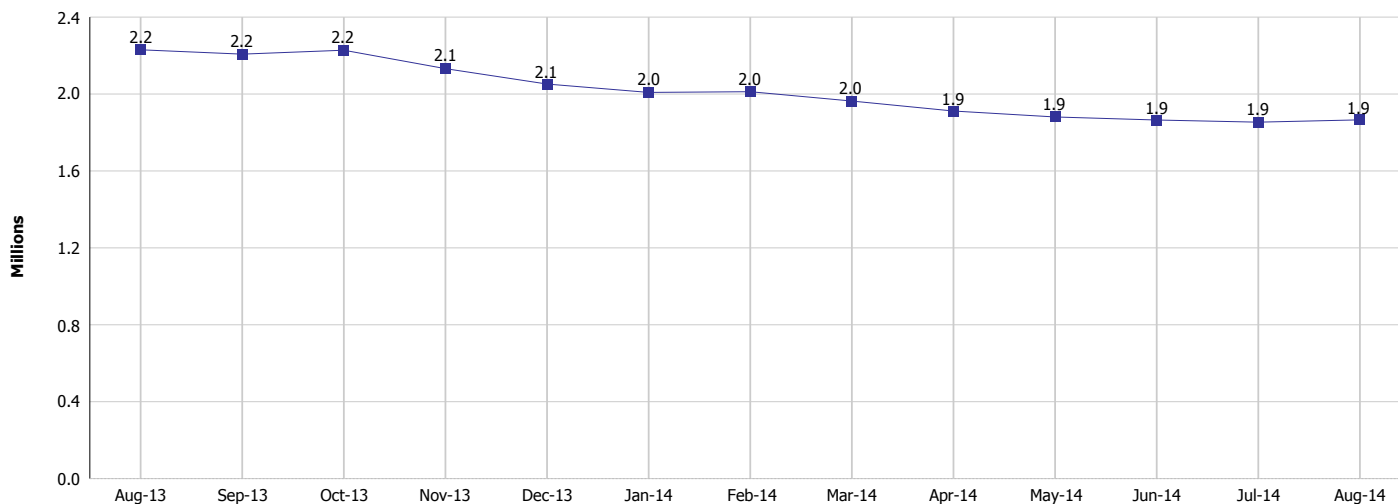
### Monthly Management Report

Reporting Month: August 2014

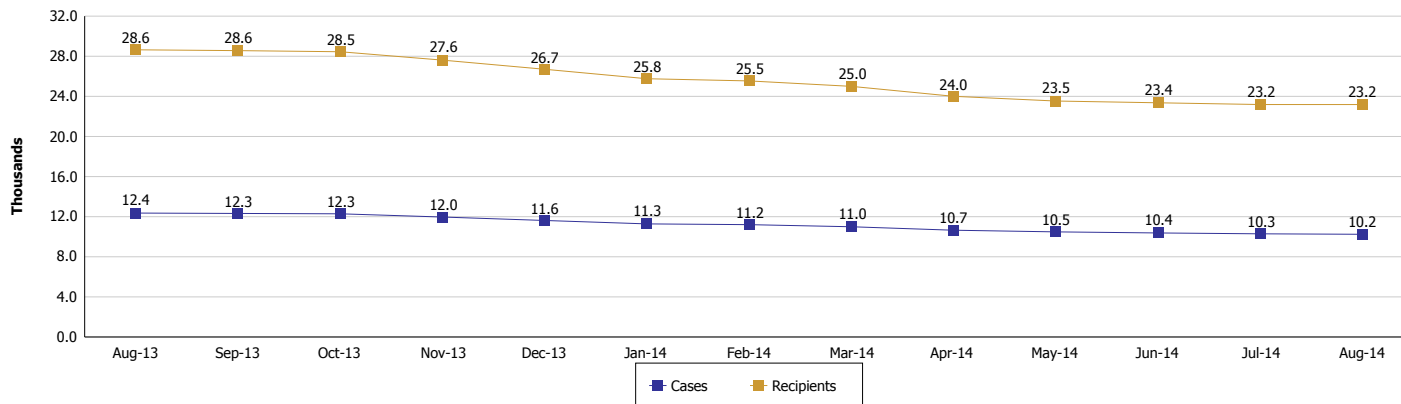
Location: Statewide

#### TEMPORARY ASSISTANCE FOR NEEDY FAMILIES (TANF)

**TANF Cash Assistance**  
(TANF Regular and TANF UP)



**TANF Cases and Recipients**  
(TANF Regular and TANF UP)



**Note:**

All data July 2014 and following will be broken out according to the new DFR region structure effective July 1 2014.



## DIVISION OF FAMILY RESOURCES

### Monthly Management Report

Reporting Month: August 2014

Location: Statewide

#### SUPPLEMENTAL NUTRITION ASSISTANCE PROGRAM (SNAP)

	August 2014	July 2014	August 2013	Annual Change
Total issuance	\$107,238,444	\$108,603,364	\$122,499,496	-12.46%
Number of households receiving SNAP benefits	397,995	398,727	419,948	-5.23%
Number of recipients	875,929	877,689	931,737	-5.99%
Average issuance per household	\$269.45	\$272.38	\$291.70	-7.63%
Average issuance per recipient	\$122.43	\$123.74	\$131.47	-6.88%

**Note:**

All data July 2014 and following will be broken out according to the new DFR region structure effective July 1 2014.

#### SNAP ERROR RATES

	April 2014	March 2014	February 2014	Cumulative FFY 2013
FFY Cumulative Positive Error Rate	3.62%	4.12%	3.70%	3.62%
Monthly Positive Error Rate	0.98%	5.84%	2.83%	NA
FFY Cumulative Negative Error Rate	26.49%	26.50%	28.57%	18.99%
Monthly Negative Error Rate	26.42%	15.79%	30.51%	NA

**Note:**

All data July 2014 and following will be broken out according to the new DFR region structure effective July 1 2014.

**Notes:**

Reporting periods for SNAP Error Rates reflect the review period and Federal submission deadline. The month reported above is the month in which an action was taken included in the review sample.

Positive actions are those which produced an issuance of benefits to a household. Negative actions are those which closed or denied benefits to a household.

Error Rate data is reported by the state before the federal agency has accepted and finalized the results. This rate is subject to revision based upon: completion and submission of outstanding reviews; final review corrections; and completion of previously dropped reviews. Monthly numbers are taken from end-of-month totals. The error status of cases may be changed by the State or Federal Review process, which would cause a change that might not be reflected in the previous monthly numbers.



# DIVISION OF FAMILY RESOURCES

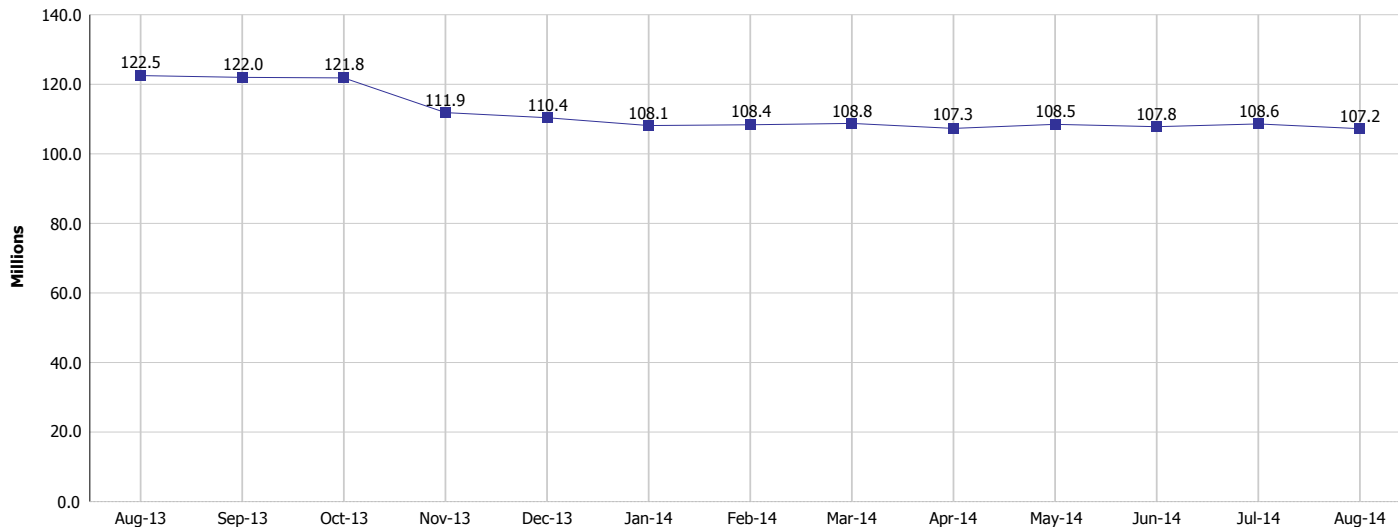
## Monthly Management Report

Reporting Month: August 2014

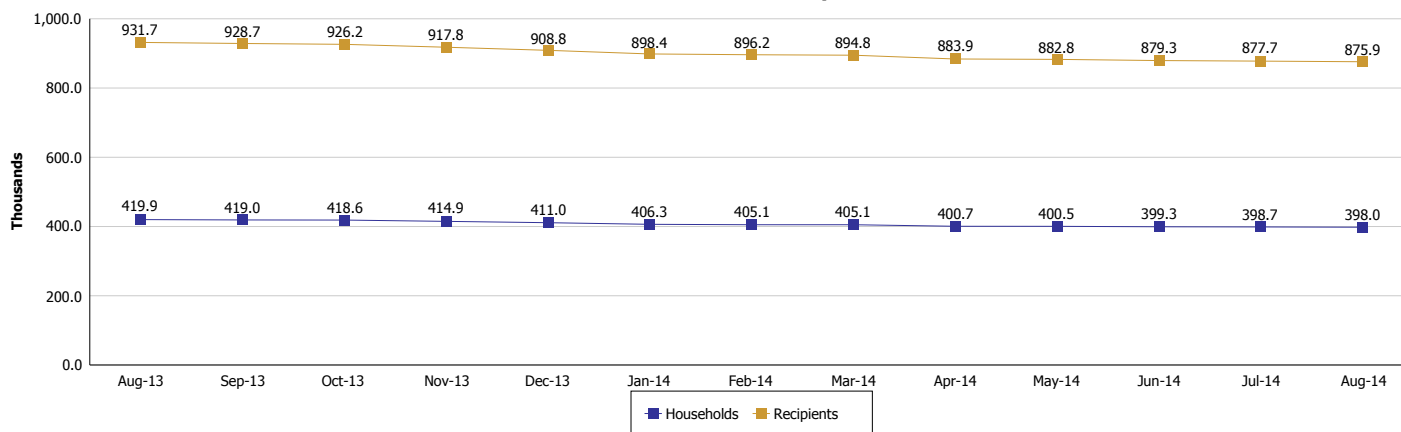
Location: Statewide

### SUPPLEMENTAL NUTRITION ASSISTANCE PROGRAM (SNAP)

#### SNAP Issuance



#### SNAP Households and Recipients



#### Note:

All data July 2014 and following will be broken out according to the new DFR region structure effective July 1 2014.



## DIVISION OF FAMILY RESOURCES

### Monthly Management Report

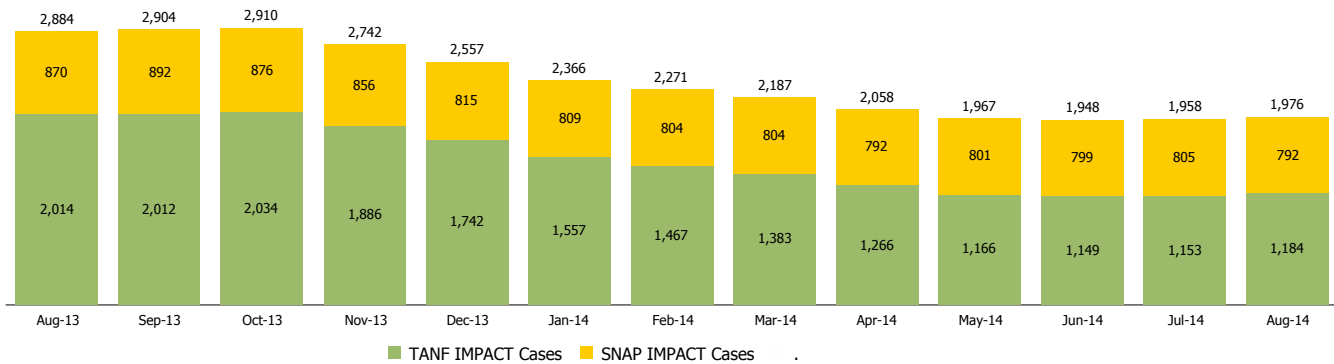
Reporting Month: August 2014

Location: Statewide

#### INDIANA MANPOWER PLACEMENT AND COMPREHENSIVE TRAINING (IMPACT)

	August 2014	July 2014	August 2013	Annual Change
Number of IMPACT cases	1,976	1,958	2,884	-31.48%
Number of TANF IMPACT adults	1,184	1,153	2,014	-41.21%
Number of SNAP IMPACT Cases	792	805	870	-8.97%
Total number of adults employed	247	222	296	-16.55%
Number of TANF IMPACT adults newly employed (within past 30 days)	155	116	235	-34.04%
Number of SNAP IMPACT adults employed	92	106	61	50.82%
Total number of adults ineligible due to employment	2,495	2,314	1,776	40.48%
Number of TANF adults ineligible due to employment	17	24	32	-46.88%
Number of SNAP adults ineligible due to employment	2,478	2,290	1,744	42.09%

**IMPACT Caseloads**  
(SNAP, TANF, Total Caseload)



**Note:**

All data July 2014 and following will be broken out according to the new DFR region structure effective July 1 2014.



## DIVISION OF FAMILY RESOURCES

### Monthly Management Report

Reporting Month: August 2014

Location: Statewide

#### CHILD CARE

	August 2014	July 2014	August 2013	Annual Change
Total Subsidized Child Care Payments	16,493,215	17,244,898	14,137,397	16.66%
Total Number of CCDF Children	38,331	39,123	36,779	4.22%
Total Number of licensed Child Care Homes	2,794	2,783	2,818	-0.85%
Licensed Capacity of Child Care Homes	35,517	35,476	35,773	-0.72%
Total Number of Licensed CC Centers	594	595	588	1.02%
Licensed Capacity of CC Centers	65,367	65,308	64,213	1.80%
Total Number of Registered Ministries (Capacity not Regulated)	652	644	661	-1.36%

**Note:**

All data July 2014 and following will be broken out according to the new DFR region structure effective July 1 2014.